

Introduction of the Guidelines related to Pesticide Residues in Food Regulation (Cap. 132CM)

Centre for Food Safety
3 March 2014

Preparation of Guidelines

- ✿ CFS has prepared guidelines to assist the trade in complying with the requirements of the Regulation –
 1. User Guidelines
 2. Guidelines on Food Classification for the Regulation
 3. Guide to the Proposal for Addition or Revision of MRLs and EMRLs, and Addition of Exempted Pesticides under the Regulation (Cap. 132CM)

The Guidelines

- ✿ Subject to periodic review by DFEH and may be amended or supplemented as necessary from time to time.
- ✿ The Guidelines does not have the force of the law and should not be interpreted in any manner which would override the provision of the Regulation. In case of any inconsistency, the statutory provision will prevail.

User Guidelines

Objectives

- ✿ Aim to assist the trade in having a better understanding of the Regulation, and to answer some frequently asked questions

Table of Content

Chapter 1	Introduction
Chapter 2	Interpretation of MRLs/EMRLs for Pesticide-Food Pairs Listed in Schedule 1
Chapter 3	Interpretation of Exempted Pesticides Listed in Schedule 2
Chapter 4	Frequently Asked Questions

Interpretation of MRLs/EMRLs for Pesticide-Food Pairs Listed in Schedule 1

- ✿ How to Read the Schedule 1
- ✿ Interpretation of MRLs/EMRLs for Processed Food and Compounded Food
- ✿ Interpretation of MRLs/EMRLs for Foods of Animal Origin
 - ✿ Certain meat or poultry meat
 - ✿ Certain milk products

Interpretation of Exempted Pesticides Listed in Schedule 2

- ✿ Criteria for inclusion in the list of exempted pesticides

Frequently Asked Questions

- ✿ The Regulation
- ✿ Food surveillance and enforcement
- ✿ Laboratory analysis

Guidelines on Food Classification for the Regulation

Objectives

- ✿ To facilitate the trade in identifying the appropriate pesticide residue limits that are relevant to the food commodities concerned
 - ✿ To answer some frequently asked questions

Background

- ✿ One of the key features of the Regulation is to adopt the Codex standards as the backbone
- ✿ Only food commodities of local interest/relevance are included in the Guidelines
 - ✦ Traders are recommended to refer to the original Codex Classification for a complete Codex list of food commodities if necessary.
- ✿ The Guidelines has also incorporated food items of special local interest not found on the Codex list.

Food Classification Tables

- ✿ Fruits
- ✿ Vegetables
- ✿ Grasses
- ✿ Nuts and seeds
- ✿ Herbs and spices

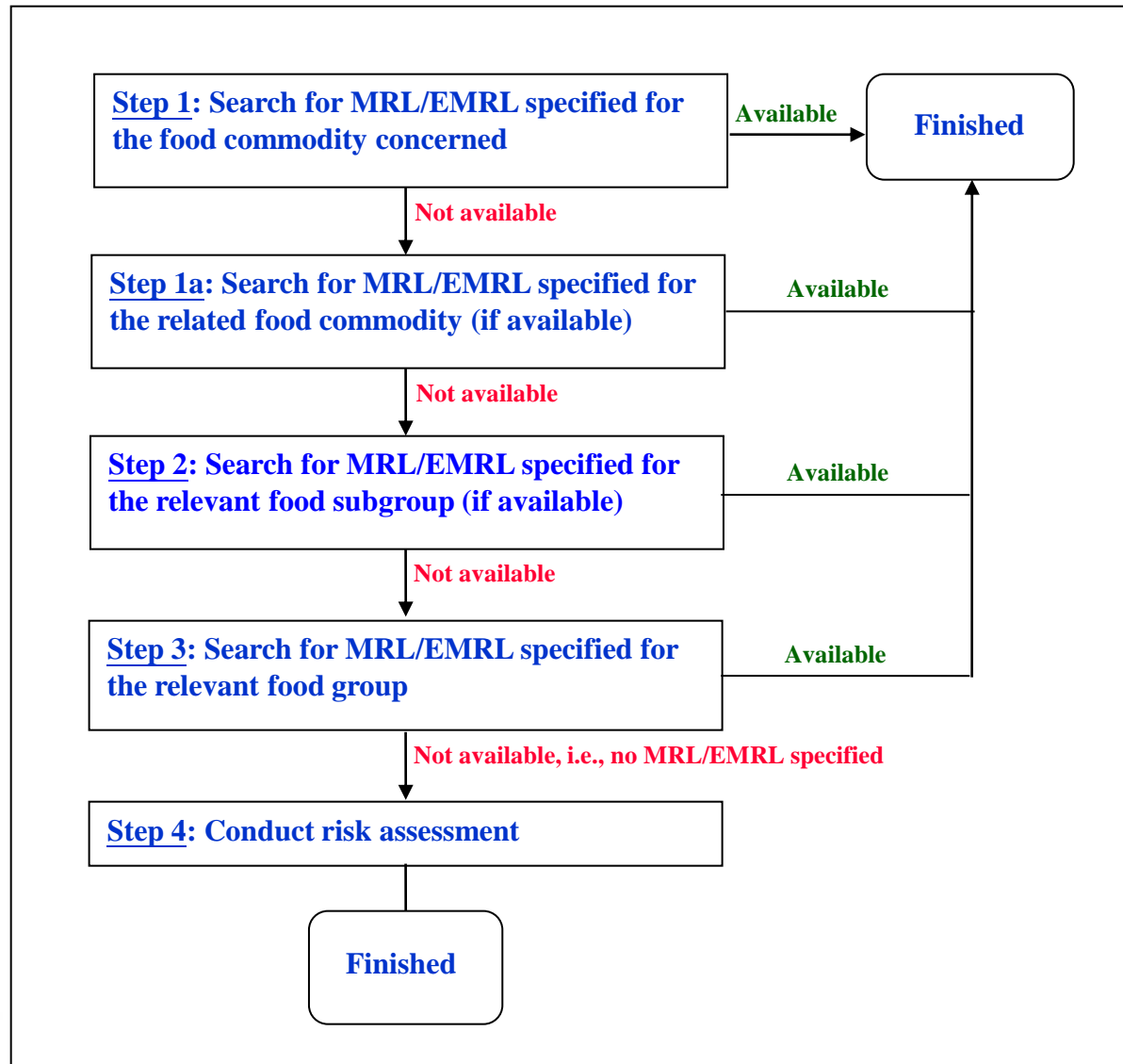
Example

Code no.	Common name	Scientific name
FC 0001	Citrus fruits	(includes all commodities in this group)
Subgroup C “Oranges, Sweet, Sour”		
-	Blood orange (see Orange, Sweet)	Cultivar of <i>Citrus sinensis</i> Osbeck

Group 1: Citrus fruits (group letter code FC)

- a. Portion of the commodity to which the MRL applies (and which is analysed). **Whole commodity.**

A summary diagram of finding the appropriate pesticide residue limits for a specified food item using the food classification tables



Special Notes to Users - Example

- ✿ Food type “01 FRUITS”
 1. Melon-type fruits such as melon, watermelon, cantaloupe, etc., belong to “Fruiting vegetables – Cucurbits”.
 2. Taking into consideration the water content and percentage of sugar, the similar use pattern of pesticides and the residues behaviour, and the portion of the commodity to which the MRLs apply, “Persimmon, Japanese” and “Persimmon, Chinese” are grouped under “pome fruits”; whereas “Persimmon, American” is grouped under “Assorted tropical and sub-tropical fruits – inedible peel”.
 3. Coconut belongs to “Tree nuts” whereas “Coconut, Young” is grouped under “Assorted tropical and sub-tropical fruits – inedible peel”.
 4. “Ground cherries” belongs to “Fruiting vegetables other than Cucurbits”.

Guide to the Proposal for Addition or Revision of MRLs and EMRLs, and Addition of Exempted Pesticides under the Regulation (Cap. 132CM)

Objectives

- ❁ To provide general information and to set out the procedures and essential documentations necessary for submission of proposals for addition or revision of MRLs/EMRLs or addition of exempted pesticides under the Regulation.
- ❁ To provide answers to some frequently asked questions.

Content

Chapter 1	Introduction
Chapter 2	Definitions
Chapter 3	Submission of Proposal
Chapter 4	Enquiries
Chapter 5	Frequently Asked Questions
Appendix I	Proposal Form
Appendix II	Checklist of Documents to be Submitted

Documentation and Information Required

- ✿ Part I: Proposal of revising/adding MRLs/EMRLs of pesticides already included in Schedule 1
- ✿ Part II: Proposal of adding MRLs/EMRLs of pesticides NOT included in Schedule 1
- ✿ Part III: Proposal of adding exempted pesticides to Schedule 2

How to obtain the Guidelines

✿ Electronic versions

- ✿ CFS website

✿ Hard copies

- ✿ Communication Resource Unit, CFS
8/F Fa Yuen Street,
Municipal Services Building,
123A Fa Yuen Street, MongKok, Kowloon.

End