

TAKUMI NEXT 2020



ESSENCE
OF
JAPAN
MASTERY
COLLECTION

JETRO (Japan External Trade Organization) and METI (Ministry of Economy, Trade and Industry) have launched the project "Takumi Next 2020," to support Japanese craftsmen to expand their markets abroad.

The project "Takumi Next 2020" has over 100 Japanese producers excel at the art of creation that utilize the local resources such as crafts, traditional products, and household goods that will lead the next generation of Japan.

Their products present the highest quality mastery products made in Japan with strong background in traditional techniques and rich cultural context behind the works.

Through the lens of these craftsmen, you can glimpse the inner workings of a nation, Japan's history and the industries that drive its economy and its vision for the future.

Textiles/Weaving

- 001 Saiei Orimono Co., Ltd.
Fukushima
- 002 38works, Inc
Fukushima
- 003 Musashino uniform co.,Ltd
Saitama
- 004 Surprise Creative.,Ltd.
Tokyo
- 005 chikusen Co., Ltd.
Tokyo
- 006 MARUMASU DYEING Co.,Ltd
Tokyo
- 007 Matsui silk weaving co.,Ltd
Toyama
- 008 NUKUMORI KOUBOU Co.,Ltd
Shizuoka
- 009 N・K・F Ink.
Shizuoka
- 010 Suzusan co., Ltd.
Aichi
- 011 WESTY INDUSTRIES CO.,LTD.
Shiga
- 012 Kojima Textile Co., Ltd.
Kyoto
- 013 DAITOU SHINGU KOGYO Co.,Ltd.
Kyoto
- 014 Engi no Ito
Osaka
- 015 FUKUROYA TOWEL & co.,LTD
Osaka
- 016 BAN INOUE Ltd.
Nara
- 017 TAKEYARI Co.,Ltd.
Okayama
- 018 WHOVAL Co.,Ltd.
Okayama
- 019 SEISHOKU.CO.,LTD.
Okayama
- 020 UNITED SILK Co.,Ltd.
Ehime
- 021 Yoshijimashinichi nabeshimadantsu Co., Ltd.
Saga

Woodcrafts

- 022 Sasaki Kogei Co., Ltd.
Hokkaido
- 023 Takizawavencer Co.,Ltd
Hokkaido
- 024 Kenji Usuda
Hokkaido
- 025 Kimura Woodcraft Factory Ltd.
Aomori
- 026 TOMIOKA SHOTEN CO., LTD.
Akita
- 027 asahi kensou corporation
Fukushima
- 028 Usaburo kokeshi Co.,LTD
Gunma
- 029 Yoshizawa Wood & Lacquer Works
Gunma
- 030 Sekine Paulownia Products
Saitama
- 031 Toyota Sculpture Studio Co., Ltd.
Saitama
- 032 ASANO MOKKOUSHO.co.,LTD
Niigata

- 033 MARUNAO CO.,LTD
Niigata
- 034 SHIBATA SIKKI CO.LTD
Toyama
- 035 Hikimonojo639 Corporation
Shizuoka
- 036 Toyooka Craft Ltd.
Shizuoka
- 037 ism
Kyoto
- 038 Paulownia furniture AZUMA Co., Ltd.
Wakayama
- 039 KAMADA KOGEISHA Co.,Ltd.
Okayama
- 040 Dairi Lumber Co.,Ltd
Tokushima
- 041 Morimoto Tategu Ten Ltd.,
Kagawa
- 042 HinamoriMeibokuCo,Ltd
Miyazaki

Glassware

- 043 Hirota Glass Co.,Ltd
Tokyo
 - 044 AMANOSHIKKI CO.,LTD
Toyama
 - 045 Nissho Kogyo Co.,Ltd.
Shizuoka
 - 046 Soejima Glassware Co.,Ltd.
Saga
 - 047 Glass Works Tyuki
Okinawa
- ## Leather Goods
- 048 Tsuchiya Kaban CO., LTD.
Tokyo
 - 049 Enchant
Aichi
 - 050 TokunagaBussan , Co, Ltd
Hyogo

Metalworks

- 051 Iwate Iron Co.,Ltd.
Iwate
- 052 Y.S.M Co.,Ltd.
Saitama
- 053 STUDIO BYCOLOR
Tokyo
- 054 ANCHOR Co.,Ltd.
Tokyo
- 055 AKARI Co.,Ltd
Kanagawa
- 056 Yamatani Industry Co.,Ltd.
Niigata
- 057 ARTISAN.LLC
Niigata
- 058 Suwada Blacksmith Works, Inc.
Niigata
- 059 Tomita Cutlery Co., Ltd.
Niigata
- 060 MIYAZU Co.,Ltd
Toyama
- 061 Otera-Kohachiro-Shoten
Toyama
- 062 Shimatani Souryu-Koubo Inc.
Toyama
- 063 Kanamori Alloy CO., Ltd.
Ishikawa

- 064 KoaCute
Yamanashi
- 065 NIKKEN CUTLERY CO., LTD
Gifu
- 066 Seki Kanetsugu Cutlery Co., Ltd
Gifu
- 067 Enshu Spring Co.,Ltd
Shizuoka
- 068 Nanjo Kobo Co.,Ltd
Kyoto
- 069 KISHU Plus LLP
Wakayama
- 070 YOSUI
Hiroshima

Ceramics

- 071 Narushimayaki Wakuigama
Yamagata
- 072 Asakano-gama
Fukushima
- 073 Duke Co., Ltd.
Tokyo
- 074 Jusengama
Gifu
- 075 MARURI TAMAKI RIKIZO SHOTEN CO.,LTD.
Gifu
- 076 Ceramic Japan Co., Ltd.
Aichi
- 077 G.M.P. Inc.
Mie
- 078 Shinroku Co.,Ltd
Kyoto
- 079 Touan Co.,Ltd
Kyoto
- 080 TOHGORO Co., Ltd.
Kyoto
- 081 narutaki
Okayama
- 082 Imarishokai Co., Ltd.
Saga
- 083 Yamahai Kamamoto Corporation
Saga
- 084 DAIKEI Co., Ltd.
Saga
- 085 SHIMABUN Co.,Ltd.
Saga
- 086 Kinshodo Co., Ltd.
Saga
- 087 Kouraku Kiln Inc.
Saga
- 088 ARITA PORCELAIN LAB, INC.
Saga
- 089 KubotaMinoruCeramicsLtd.KUEMON
Saga
- 090 nabeshima kosengama
Saga

Household Goods

- 091 mother tool inc.
Tochigi
- 092 YOUYOUANG Co.,Ltd
Gunma
- 093 Yamamoto Farm Corporation
Gunma
- 094 TRINUS, Inc.
Tokyo
- 095 KITCHIBE Co., Ltd.
Tokyo

- 096 Floral kobo katsura Inc.
Kanagawa
- 097 KAWASAKI PLASTIC CO.,LTD.
Niigata
- 098 Marumi Yasuda Kawara Kogyo Corporation
Niigata
- 099 TAKAZAWA Candle Co., Ltd.
Ishikawa
- 100 KISSO CO.,LTD.
Fukui
- 101 STYLE OF JAPAN, INC.
Fukui
- 102 Kawai Co., Ltd.
Fukui
- 103 Plastics Co., Ltd.
Fukui
- 104 RITUAL the crafts
Nagano
- 105 MACRW Co., Ltd.
Shizuoka
- 106 Tokai Slowtoy club
Aichi
- 107 A-STORY Inc.
Kyoto
- 108 Horiuchi Mirror Industry Co.,Ltd.
Osaka
- 109 NAKAJIMA JUKYUDO.,LTD.
Osaka
- 110 YUMESHOKUNIN CO., LTD.
Osaka
- 111 Hiroshima Artist Brush Manufacturing Co., Ltd.
Hiroshima
- 112 Hata Bunshindou
Hiroshima
- 113 IKEHIKO CORPORATION Co.,Ltd.
Fukuoka

Washi Paper/Paper Products

- 114 Imai Daruma NAYA Co.,Ltd
Gunma
- 115 darumaya-saku
Gunma
- 116 Ichino Co., Ltd.
Gunma
- 117 tadanoyamamoto
Saitama
- 118 Kakinuma Ningyo Co.,Ltd
Saitama
- 119 SUGAI WORLD, Inc.
Tokyo
- 120 AIUEO
Kyoto
- 121 TAISEI Co., Ltd.
Osaka



Fairy Feather®, which took four years to complete, came out with the catchphrase of “the world’s thinnest and lightest fabric” in 2012, a year after the Great East Japan Earthquake. “Fairy Feather”™ contains the unobtrusive aesthetics of Kawamata Silk, which has been committed to lining production, and our spirit of pioneering cutting-edge textiles.

It was the golden age of the silk industry in Kawamata when our company was founded in 1952. We didn’t doubt that we only produced the silk habutae for linings of Kimono and print scarves made in Yokohama. Now the fiber industry is in a serious slump, but we recognize immense possibilities of the silk which will make revive our industry.

COMPANY

Name Saiei Orimono Co., Ltd.
Products silk fabrics (Kimono cloth, suit cloth, industrial material), stoles and scarves
Address 6-1 Baba Tsuruzawa Kawamatamachi Date-Gun Fukushima
Tel +81-24-565-2331

Email info@saiei-orimono.com
Language support Japanese, English, French
URL saiei-orimono.com
Establishment 1952
Representative Yasuyuki Saito





Our company develops, manufactures and sells products using “Aizu cotton,” which has been woven in the western part of Aizu area in Fukushima prefecture for a long time. I am also the senior managing director of Aizu cotton weaving company, Harappa Co., Ltd. While the number of weaving cloths has decreased, it has managed to remain. I will leave this factory in the future.

This is Aizu cotton, which is made from the old Harayama Textile Factory, which was founded in 1902. Originally, Aizu cotton

has been loved by people in Aizu for a long time as a fabric for farm work such as field clothes. A durable fabric that is cool in summer and warm in winter. There used to be about 30 woven fabrics in the past, but now we only have 2 left. Sometimes it's my father's parents' house, but I think it's my role to leave this material for the next generation.

COMPANY

Name 38works, Inc
Products Aizu cotton products
Address 4-25 Hiyoshimachi Aizuwakamatsu-Shi
 Fukushima
Tel +81-242-23-7674

Email info@38cms.net
Language support Japanese
URL www.38works-aizu.com
Establishment 2019
Representative Shuichi Harayama



Musashino uniform co.,ltd



Textiles/
Weaving

Woodcrafts

Glassware

Leather
Goods

Metalsworks

Ceramics



Gyoda City's Tabi industry has become a declining industry in recent years. Traditional tabi socks are usually black and white, but by developing a high fashionable pattern socks as "Samurai Tabi," we aim to expand the market and increase the work of tabi craftsmen and revitalize of the region. The Samurai Tabi is MADE IN GYODA made by Gyoda City's tabi craftsmen. I wish the image "Tabi as Gyoda" will spread.

Traditional tabi patterns are usually black and white. The reason for the development was that young people who like to wear Kimonos wanted a tabi with high design. At first, when I asked the Tabi Craftsman to produce it, I was hated because there eyes flickered.

Household
Goods

Washi Paper/
Paper Products

COMPANY



Name Musashino uniform co.,ltd
Products work clothes, Tabi socks, tie
Address 2-7-7 Fujiwaracho Gyoda-Shi Saitama
Tel +81-48-554-7325

Email komatsu@hotmail-jp.com
Language support Japanese
URL www.musashinouniform.co.jp/shop
Establishment 1960
Representative Kazuhiro Komatsu

SAMURAITABI





Happi coat is a traditional Japanese costume that has been loved by common people for many years. We will refine our Happi into a modern style while preserving its long tradition. “Connecting the times. Connecting people.” With such thoughts in mind, we continue to design modern style Happi.

Our happi connect the people who wear and the people who see them.

“Happi” coat is a traditional Japanese costume that has been loved by common people for many years. In order to pass down these wonderful coats that people have loved to later generations while respecting traditions, we provide designs that suit various scenarios in modern life. We think that “Happi” is not only a fashion but also a feather fabric that can connect people. While respecting tradition, we are sending out designs that match today’s diverse scenes in order to preserve this wonderful woven fabric. We believe that Happi is not only a fashion item, but also a feather fabric that can connect people to each other.

COMPANY

Name Surprise Creative.,Ltd.
Products Happi
Address 7F Maru-K Build. 2-29-11 Asakusabashi
 Taito-Ku Tokyo
Tel +81-3-6821-6444

Email info@surprise-creative.jp
Language support Japanese, English
URL www.happi.tokyo
Establishment 2015
Representative Masaru Sugiura





We are particular about any of the fabrics of many kinds of product items, and we dye them using the original materials. Designs that have been used since a long time ago have a unique lineup that has been scrapped through the times and is accepted by the present times.

Dyed yukata, which was the mainstream of plain and squeezed, with a stylish pattern, the name spread throughout the country as an Edo souvenir. In addition, he creates novel designs through interaction with actors and cultural people who are at the forefront

of the times. We got popular actors to wear (advertising tower) and spread their names.

Textiles/
Weaving

Woodcrafts

Glassware

Leather
Goods

Metalworks

Ceramics

Household
Goods

Washi Paper/
Paper Products

COMPANY



Name chikusen Co., Ltd.
Products Yukata
Address 2-3 Nihombashi Kobunacho Chuo-Ku
 Tokyo
Tel +81-3-5202-0991

Email s.ogawa@chikusen.co.jp
Language support Japanese
URL www.chikusen.co.jp
Establishment 1842
Representative Fumio Ogawa



Textiles/
Weaving

Woodcrafts

Glassware

Leather
Goods

Metalworks

Ceramics

Household
GoodsWashi Paper/
Paper Products

We make the best use of the texture of the material while creating our own processed products. We also design our own products, and we value the importance of domestic production to continuously revitalize our production sites.

Marumasu is a factory brand based in Tokyo. Inheriting dyeing techniques from Marumasu Dyeing Co., Ltd established in 1901, Marumasu transforms dyeing into an experimental trail and produces the finest with amazing, deep color scarves and clothes.

COMPANY

Name MARUMASU DYEING Co.,Ltd
Products scarf
Address 4-27-10 Shibamata Katsushika-Ku Tokyo
Tel +81-3-3659-7211

Email info@marumasu-scarves.com
Language support Japanese
URL marumasu-stole.com
Establishment 1901
Representative Kazuhiro Matsukawa

marumasu



Tokyo



In the beautiful world of silk, many hands are trying to preserve the tradition behind the scenes. Before, I was stuck on degrees and economic worth and not sure what I was searching for. But turning towards shike silk, I realized if I make something good with roots in home town, people would visit even this small town. Shike silk spins an important destiny, and I hope that its purity will reach many people.

Johana silk textiles began around 1580s. During the Edo Period, silk products sold in Johana and Komatsu were protected by the Kaga Clan as “Kaga Silk”. During the 1688-1704, products were sold mainly in Edo (Tokyo) and Kyoto and the sales were flourished. Bunjiro Matsui founded Matsui silk weaving co.,ltd in 1877 and produced fabrics for Japanese clothing and “shike silk paper” paset Japanese paper affixed to “shike silk” for paper-covered sliding doors (fusuma). “Shike Silk” is a woven fabric with unique knots pattern that uses cocoon thread made by two silkworms with a probability of 2-3%.

COMPANY



Name Matsui silk weaving co.,ltd
Products interior products, Fusuma paper, wall paper, Kimono cloth
Address 3393 Johana Nanto-Shi Toyama
Tel +81-763-62-1230

Email info@johanas.jp
Language support Japanese, English
URL johanas.jp
Establishment 1877
Representative Fumikazu Matsui



Textiles/
Weaving

Woodcrafts

Glassware

Leather
Goods

Metalworks

Ceramics

Household
Goods

Washi Paper/
Paper Products



We are the only company that handles the fabrics and miscellaneous goods of “Enshu Men Tsumugi,” a traditional textile from Shizuoka Prefecture that has continued since the Edo period. The unique striped pattern of Enshu cotton pongee is also popular overseas.

Since 1990, the production value of Japanese traditional textiles has decreased significantly. We are striving every day to preserve the traditional fabrics that have been exist in the western region of Shizuoka Prefecture for nearly 400 years, for posterity.

COMPANY

Name NUKUMORI KOUBOU Co.,Ltd
Products fabrics, miscellaneous goods, hand towels
Address 3-12-25 Somejidai Hamakita-Ku Hamamatsu-Shi Shizuoka
Tel +81-53-545-6491

Email tsumugi@nukumorikoubou.com
Language support Japanese
URL nukumorikoubou.com
Establishment 2006
Representative Asahi Ohtaka



Shizuoka



“Enshu Men-tsumugi” is a traditional kimono fabric which expresses the unique beauty “BI,” Japanese traditional beauty, cultivated during the long history of Japan. We NIPPON KIMONO FABRICS propose a new “Made in JAPAN” fusion of kimono and modern fashion expressed with the traditional craft. Enjoy the pleasant feeling created by the gentle movement of the traditional weaving looms.

Put on the “Japanese beauty”

Kimono is a traditional clothing from long ago in Japan.

How can you wear kimono when you are not in Japan?

Nippon Kimono Fabrics brand made it possible by creating western clothings out of kimono fabric.

You can thoroughly enjoy kimono reborn as “nippon stripe.”

Casual outfits including jacket, vest, and shirt are easily coordinated with sweats, chino cloth or denim pants.

Enjoy stylish kimono in your own casual way.

Stoles, flat caps, neckties, and bowties made by kimono fabric are also available for your dandy accent.

COMPANY



Name N·K·F Ink.
Products Kimono clothing & accessory
Address 1136-9 Kakegawa Kakegawa-Shi
 Shizuoka
Tel +81-537-54-1114

Email nkf@n-kf.net
Language support Japanese, English
URL n-kf.net
Establishment 2019
Representative Kazuhiro Hatano





All of our product is made by a traditional Japanese dyeing technique, Shibori. Our factory locates in a small village called Arimatsu, which is in between Tokyo and Kyoto, and we have been doing this handicraft heritage for over 400 years, succeeding from mother to daughter, father to son.

Our company is a family business with 5 generations history with Shibori. This sensitive tradition is almost before extinction when we launched our own label suzusan in 2008. Now our collection is

sold worldwide with eclectic stores such as Leclairer in Paris, Biffi in Milan, Andreas Murkudis in Berlin, Isetan, Takashimaya United Arrows in Tokyo. Our aim is to develop and pass this heritage to next generations in the world.

COMPANY



Name Suzusan co., Ltd.
Products ready-to-wear, fashion accessories, home accessories
Address 3730 Arimatsu Midori-Ku Nagoya-Shi Aichi
Tel +81-52-693-9624

Email info@suzusan.com
Language support Japanese, English, German, French
URL www.suzusan.com
Establishment 2015
Representative Fumihiro Murase

SUZUSAN





Shiga Prefecture has Japan's largest lake, Lake Biwa. A lush green area with mountains is surrounding Lake Biwa. Aisho town prospered as a production area of hemp fabric since around 1185, thanks to the craft of hemp fabric from Kyoto, rich and clean water and "Omi-merchants" that was traditionally famous businessmen based near the town.

The president's grandfather, Masajiro Nishimura, was in China during World War II and was unable to return home for a long

time after the end of the war. So his wife Mitsuko started sewing duvet covers to make a living. It is the beginning of our company.

COMPANY

Name WESTY INDUSTRIES CO.,LTD.
Products duvet cover(comforter cover)
Address 110 Ichi Aishocho Echi-Gun Shiga
Tel +81-749-42-2155

Email westys@titan.ocn.ne.jp
Language support Japanese
URL www.westy-industries.jp
Establishment 1946
Representative Tadashi Nishimura

WESTY



Shiga

Textiles/
Weaving

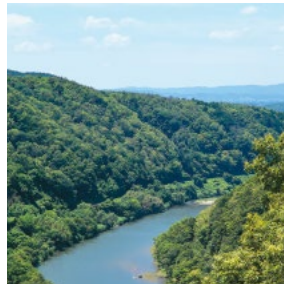
Woodcrafts

Glassware

Leather
Goods

Metalworks

Ceramics

Household
GoodsWashi Paper/
Paper Products

Among the textile industry and interior maker with integrated production there are only few companies in Japan capable of integrated production from thread making to weaving and products. It enables us to improve our quality by taking the responsibility. Today, we are proud to be the top manufacturer of textile wall coverings in Japan, with the highest production capacity.

Since 1932, we have been manufacturing woven Fusuma paper made from natural materials such as cotton and hemp fabrics that

were likewise woven by ourselves. Then we have begun to weave thin textiles made of rayon yarn that was developed from wooden pulp. In this way we manufactured and sold them in a continuous process to help the recovery of the postwar Japanese housing industry. Currently, we are challenging the small lot product on which we made an effort by making by hand and handweaving, etc. at present.

COMPANY

Name Kojima Textile Co., Ltd.
Products textile wallpaper, Fusuma paper
Address 1-3 Kitanodashiba Kamikoma Yamashirocho Kizugawa-Shi Kyoto
Tel +81-774-86-2144

Email info@kojima-orimono.com
Language support Japanese, English
URL www.kyoto-izumi.com
Establishment 1932
Representative Hajime Kojima



DAITOU SHINGU KOGYO Co.,Ltd.



Because bedding is in direct contact with your skin for a long time, we wanted to provide real safety and assurance. Every single process is conducted in Japanese domestic factories and as the finishing touch, only minimum amount of glue is used. Finished product contains no chemical residues. People with sensitive skin, old people to babies can enjoy these by feeling relieved.

Daitou Shingu is a Kyoto based Bedding manufacturing company founded in 1925. We have been making futon, zabuton and garments traditionally for over 90 years. In this ever-changing era, we are promoting the creation of an environment specializing in “sleeping.”

Daitou Shingu is a Kyoto based Bedding manufacturing company founded in 1925. We have been making futon, zabuton and garments traditionally for over 90 years. In this ever-changing era, we are promoting the creation of an environment specializing in “sleeping.”

COMPANY



Name DAITOU SHINGU KOGYO Co.,Ltd.
Products bedding
Address 66-2 Yamaden Shimomisu Yokouji
Fushimi-Ku Kyoto
Tel +81-75-622-6245

Email info@daitoushingu.com
Language support Japanese, English, Chinese
URL www.daitoushingu.com
Establishment 1925
Representative Toshiyuki Ohigashi

 Daitou Shingu



Textiles/
Weaving

Woodcrafts

Glassware

Leather
Goods

Metalworks

Ceramics

Household
Goods

Washi Paper/
Paper Products

014 Engi no Ito

Textiles/
Weaving

Woodcrafts

Glassware

Leather
Goods

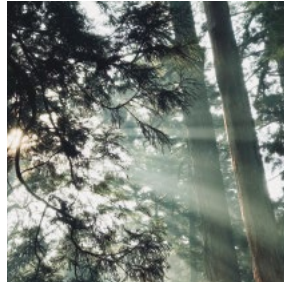
Metalworks

Ceramics



Household
Goods

Washi Paper/
Paper Products



We developed Japanese wood origin fabric products that are made from fiber with various textile technology. Our organic fabric, which is woven of Japanese nature and culture, proposes a lifestyle that pleases connection with nature. “Wear the trees”, a new concept we propose, helps you connect to the ethical living.

We are an apparel manufacturer with a history of about 70 years. We are developing our collection by utilizing our unique design thread and advanced knitting technology by craftsmen. We aim

for an ethical lifestyle under the concept of “wearing trees” for a sustainable and prosperous future. To achieve this, we developed a new fabric spun from trees and its products. Going forward, we will continue to spin Japanese trees and the culture and stories that live there, and deliver them to people around the world as fabric products.

COMPANY

Name Engi no Ito
Products stall, clothes, textile
Address 5-8 Yamazakicho Kita-Ku Osaka-Shi
 Osaka
Tel +81-6-6314-3713

Email engi.no.info.1@gmail.com
Language support Japanese, English
URL engi-ito.com
Establishment 1953
Representative Takaaki Kato



Osaka



We create towels dyed from vegetables, brewed wine and craft beer and matcha made in the Osaka area.

We use raw materials that are no longer needed, poorly shaped vegetables, or things that are no longer needed after brewing, the process of grinding green tea leaves.

Of course, we are also pursuing ease of use and functions, so that people who receive gifts will be happy and surprised.

Our company was founded in 1926 (Taisho 15).

In 1965, the factory was burned down. We introduced 20 latest jacquard looms. And we developed a woven fabric of bag woven towel jacquard. These technologies are the basis of our technology.

If these towel can add more color to your life, we are certain that it will bring happiness to both you and our towel craftsman alike!

COMPANY

Name FUKUROYA TOWEL & co.,LTD
Products SHIZUKU (dyeing with vegetable),
 NOKORI-FUKU, othertowel novelty
Address 3-37 Asahicho Izumisano-Shi Osaka
Tel +81-72-462-2288

Email info@fukuroya-towel.com
Language support Japanese
URL www.fukuroya-towel.com
Establishment 1926
Representative Kenji Fukuroya



Textiles/
Weaving

Woodcrafts

Glassware

Leather
Goods

Metalworks

Ceramics

Household
Goods

Washi Paper/
Paper Products



You can only feel the breathability and the pleasant feeling of the fabric by wearing it, which is supported by Japan's traditional life and customs. The CAYA clothing is very comfortable, which means it is sought after not only in Japan but the world over. For all these reasons, I really hope I can continue to convey the wonderful nature of Nara's mosquito net fabric.

While aligning with the trends of the times, we had inspired by Japan's original sense of spirit "wabi-sabi" (aesthetic sense in Japanese art emphasizing quiet simplicity and subdued refinement) as well as colors that have expressed the four seasons. We want to assimilate the eternal sensibility of Japanese people into modern life and keep passing it on to the future. Our key factors are manufacturing goods made of linen and cotton, running healthy restaurants and cafe, and photograph by our founder Hakudo Inoue. Each pieces are ourselves, and sencible Japanese life style.

COMPANY



Name BAN INOUE Ltd.
Products garment, life style goods, bag
Address 223 Kawakamicho Nara-Shi Nara
Tel +81-742-23-2850

Email ban-inoue@asa-ban.com
Language support Japanese, English
URL www.asa-ban.com
Establishment 1988
Representative Chika Hayashida



017 TAKEYARI Co.,Ltd.



Kurashiki in Okayama has 70% share of the canvas market in Japan. High density canvas is woven with rare antique Belgium shuttle looms. The canvas woven by craftsmen are the proof of TAKEYARI quality. To spread the good quality of TAKEYARI's canvas, we started making familiar manufactured goods.

Our founders, Mr and Mrs Takeyari opened the weaving factory in Kurashiki, Okayama in 1888. Kurashiki is located by the Seto Inland Sea and the land, where is not suitable for growing rice and vegetables due to the amount of salt in the water. However, it was perfect for growing cotton so the large cotton industry has been developed there since the 17th century. The wife Ume was an exceptional weaver and the quality of their products gradually became well known.

COMPANY



Name TAKEYARI Co.,Ltd.
Products canvas bag, canvas
Address 414 Sobara Kurashiki-Shi Okayama
Tel +81-86-485-1111

Email info@takeyari-tex.co.jp
Language support Japanese, English
URL www.takeyari-tex.co.jp
Establishment 1888
Representative Kenji Takeyari

TAKEYARI



Textiles/
Weaving

Woodcrafts

Glassware

Leather
Goods

Metalworks

Ceramics

Household
Goods

Washi Paper/
Paper Products

Textiles/
Weaving

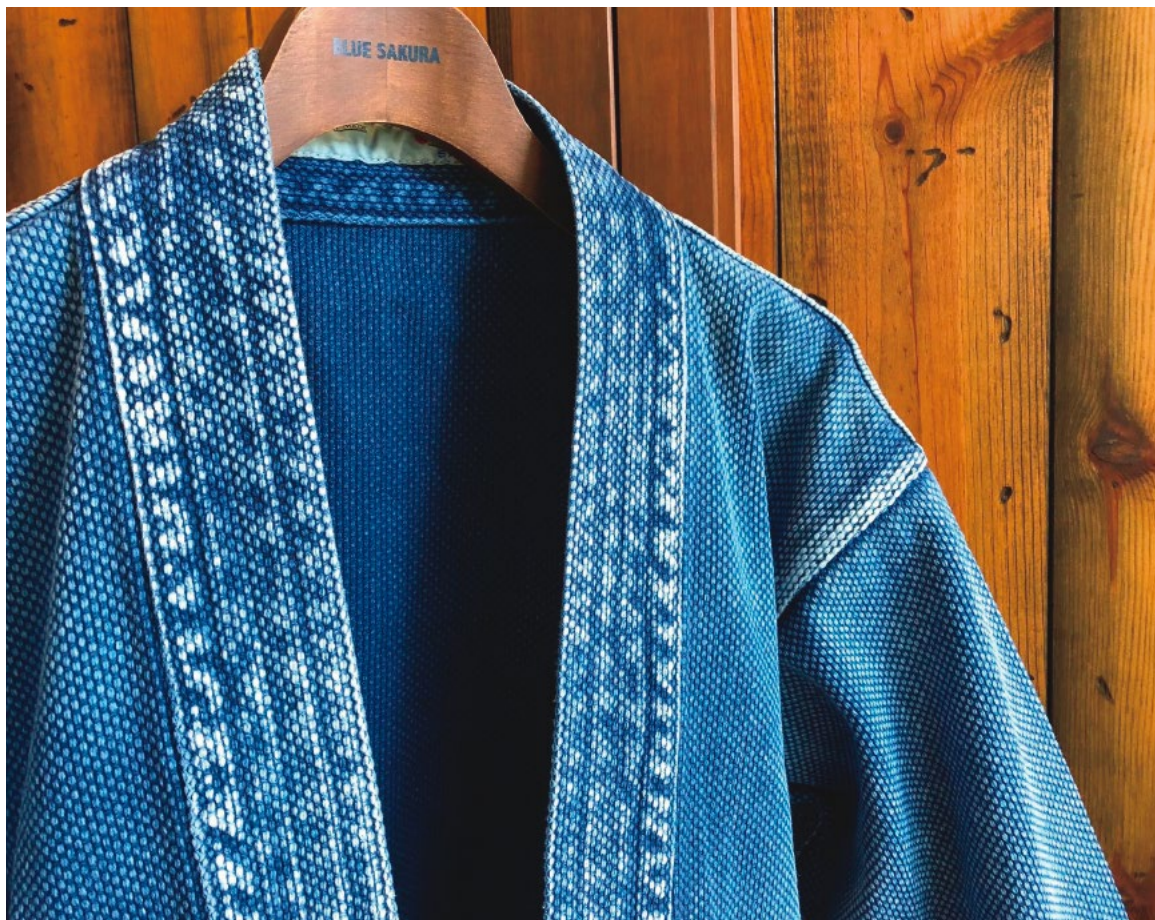
Woodcrafts

Glassware

Leather
Goods

Metalworks

Ceramics

Household
GoodsWashi Paper/
Paper Products

Based on the concept of “AUTHENTIC JAPAN DENIMISM”, it expresses a unique design and a calculated silhouette that can only be expressed with a factory brand, backed by reliable sewing and sophisticated processing techniques up to vintage. JAPANESE CRAFTSMANSHIP is surely breathing in the vintage feeling that drifts some Japanese tradition and culture, while being designed naturally and stylishly.

We established WHOVAL in 2007. From the thought that we can't realize our creations without washing process, we started the processing plant. Employees has exceeded 30 people and we are striving to raise the value of “made in Kojima”. Skilled engineers and sensitiveness young guys work hard together to expand the range of their works and also challenge various processing. Now here in Kojima has become widely known as a town of jeans over the world. “Bring to the world from Kojima, the birthplace of Japanese domestic jeans”. This is our belief to develop unknown technology and new products.

COMPANY



Name WHOVAL Co.,Ltd.
Products apparel product
Address 5-1-50 Kojima Shimonochi Kurashiki-Shi
 Okayama
Tel +81-86-474-0080

Email r.ino@whoval.com
Language support Japanese, English
URL whoval.com
Establishment 2009
Representative Shuji Ishibashi

BLUE SAKURA ✦





It was summer 2019 when NUNOUS became thin enough to be sewn. Until then, we continued to develop products for the interior field, such as stone, tile, and wood, but now that we are able to sew, the possibilities of products have expanded greatly. We will continue to design better up-cycle products.

In 1880, we started manufacturing textiles in Kurashiki. We have been in the dyeing business since 1942. Research on the up cycle of textiles started in 2013. Textiles that are mixed with various

raw materials are one of the materials that is difficult to up-cycle even for recycling specialists. Substandard textiles are usually shredded and used in an invisible part or burned. NUNOUS was developed with the desire to give these substandard textiles new life and propose new possibilities for textiles to society.

COMPANY



Name SEISHOKU.CO.,LTD.
Products various sorts of dyeing and bleaching
Address 2-8-7 Nakaicho Kita-Ku Okayama-Shi
 Okayama
Tel +81-86-224-3281

Email nunous@seishoku.co.jp
Language support Japanese, English
URL nunous.jp
Establishment 1880
Representative Akira Himei

NUNOUS



Textiles/
Weaving

Woodcrafts

Glassware

Leather
Goods

Metalsworks

Ceramics

Household
Goods

Washi Paper/
Paper Products



We have been promoting the “Ehime Silk Project” since 2016 to create a new silk industry. We are aiming to establish a system that can perform everything from cocoon production to processing, product development, manufacturing, and sales. We want to promote business and increase the value of silk materials and passing it on to the next generation.

UNITED SILK has a mission of “To survive the earth” and reconsider the impact of humanity on the environment and society, and propose new lifestyles for the future. We first focused on utilizing by-products while developing SILMORE. About 17% of the whole cocoon turns into raw silk from it. We are working to utilize the remaining 83% of cocoons without waste, discovering the value of what was previously discarded, and trying to create new demand and supply flows by upcycling to high value-added products.

COMPANY

Name	UNITED SILK Co., Ltd.	Email	takanori.kiyotani@united-silk.co.jp
Products	cosmetic goods using silk as a concept material (ex. SILMORE)	Language support	Japanese, English
Address	3-3-38 Tachibana Matsuyama-Shi Ehime	URL	
Tel	+81-89-909-7793	Establishment	2016
		Representative	Takanori Kiyotani



Ehime

Yoshijimashinichi nabeshimadantsu Co., Ltd.



- Textiles/
Weaving
- Woodcrafts
- Glassware
- Leather
Goods
- Metalsworks
- Ceramics
- Household
Goods
- Washi Paper/
Paper Products



Nabeshimadantsu is a precious and historically significant product that was presented to the Edo Shogun family and Daimyo as a gift from Nabeshima Clan. In the Edo period, when there was no wool, cotton was grown in place of rice on reclaimed land in Saga. We are the only weaving company that has passed on this traditional technique from one family to the next.

In the Meiji era, inmates produced Nabeshimadantsu as part of the prison's rehabilitation project. The founder of our company

was a warden of a prison and he realized the importance of tradition because of the beauty and warmth of our rugs and their historical significance. When he retired, he bought the rights of Nabeshimadantsu's technology, and founded the company in the first year of the Taisho era. The first production was a variant of Nabeshimadantsu's traditional pattern "Crab Peony", which is our most important design as it is full of the spirit that the first generation put into our Dantsu.

COMPANY



Name Yoshijimashinichi nabeshimadantsu Co., Ltd.
Products traditional crafts Nabeshimadantsu
Address 209-1 Yamatocho Umeno Saga-Shi Saga
Tel +81-952-37-8546

Email info@honke-nabeshimadantsu.co.jp
Language support Japanese
URL honke-nabeshimadantsu.co.jp
Establishment 1912
Representative Shinichi Yoshijima



本家 結島 織造





Originally founded in 1976 as a furniture subcontracting factory, it has gradually shifted to making woody craft using the technology cultivated in the work of furniture subcontracting.

We use high quality wood obtained locally and do not use artificial colors to create expressive products using the difference in color of the wood itself.

Because of the use of natural wood, even the same product has a different grain, and the difference in the grain is

reflected in the difference in the expression of each product. And I want you to feel the difference.

We want to make people who pick up our products feel “joy,” “comfort,” and “excitement.” Because of the use of natural wood, even the same product has a different grain, and the difference in the grain is reflected in the difference in the expression of each product. And I want you to feel the difference. The dream is that people from around the world who pick up our products will be interested in manufacturing in Asahikawa and will be a catalyst for visiting Asahikawa.

COMPANY



Name Sasaki Kogei Co., Ltd.
Products door chime, woody stationery, woody toy, woody craft
Address 14-3-4-10 Nagayama Asahikawa-Shi Hokkaido
Tel +81-166-25-2288

Email mainfactory@sasaki-kogei.com
Language support Japanese, English
URL sasaki-kogei.com
Establishment 1976
Representative Yujiro Sasaki





Using “Paper-Wood” that we developed exclusively in 2009 as the main material, we manufacture products carefully with advanced woodworking skills in Asahikawa, one of the largest furniture production areas in Japan. Paper-Wood is a plywood that has colorful and beautiful cross section born of an innovative method involving the lamination of colored recycled paper and wood grown in Hokkaido.

New designs by creators active in Japan and overseas, attractive expressions not found in other materials, and the potential of production areas where material production and processing are completed in Hokkaido. With these, PLYWOOD laboratory, which is the brand that we started, sends out wonderful and attractive products that cannot be found anywhere else.

Textiles/
Weaving

Woodcrafts

Glassware

Leather
Goods

Metalworks

Ceramics

Household
Goods

Washi Paper/
Paper Products

Hokkaido



COMPANY

Name Takizawaveneer Co.,Ltd
Products plywood, veneer
Address 1000 Nokanancho Ashibetsu-Shi
 Hokkaido
Tel +81-124-27-3111

Email takizawatahiro@takizawaveneer.co.jp
Language support Japanese, English
URL www.takizawaveneer.co.jp
Establishment 1936
Representative Kazuhisa Takizawa



024 Kenji Usuda

Textiles/
Weaving

Woodcrafts

Glassware

Leather
Goods

Metalworks

Ceramics

Household
Goods

Washi Paper/
Paper Products



I live in Shimokawa, a small town with a population of 3,000 in the northern part of Hokkaido. 90% of this town is a forest, which is rich in nature. We make vessels and vase using locally grown timber. The woods I use are those have bends and knots, those does not become a material for furniture, and those about be broken into pieces used as fuel. It would be great if you could feel the time that the tree lived in the forest in this container with a different expression.

From the containers we make, it would be great if you could feel that the tree we use lived in the forest and that they have different facial expressions. I want to tell the splendor of the trees that have grown in the forest for a long time.

COMPANY



Name Kenji Usuda
Products wooden bowl
Address Mokkougei Center Midorimachi
 Shimokawacho Kamikawa-Gun
 Hokkaido
Tel +81-1655-4-3835

Email info@kenji-usuda.com
Language support Japanese, English
URL kenji-usuda.com
Establishment 1995
Representative Kenji Usuda



Kimura Woodcraft Factory Ltd.



Hirosaki City, Aomori Prefecture, is Japan's number one apple producing area.

It is an apple tree that brings us grace every year, but when it finishes its role, it will be disposed of, except for ones being mainly firewood. This is because when it is used as wood, it is hard to get thick and long ones and there are many knots, and it takes a lot of time and labor to process it.

"We aspire to bring peace both physically and spiritually to our peoples lives through our fully customized products." Kimura's top brand, "CHITOSE," is a brand that focuses on manufacturing apple trees. The apple trees we use are harvested from the farm, sawed and dried by ourselves. Only 50% can be used, but with the desire to introduce the unique texture of the apple tree as a local resource, I am devoted to making crafts using apple trees every day.

We have started with development of the ladder made of Aomori Hiba wood, and then shifted to doors and windows, furniture, and store fixtures to go with the times accordingly. Here we are also in the period that we can hardly survive without evolution. The interior products made of apple tree, "CHITOSE", and play equipment.

We believe that there are a lot more fields to take advantage of our skill of a craftsman. We are going to focus on Medical welfare, repairing cultural assets, renovation of partments utilizing our material grown in Aomori.

We will make a strong effort to make our wood manufacturing with craftsmanship known to people around the world.

COMPANY



Name Kimura Woodcraft Factory Ltd.
Products cutlery and plates made of apple trees, made of apple trees mirror, tray
Address 4-3-17 Chitose Hirosaki-Shi Aomori
Tel +81-172-87-2747

Email info@kimumoku.jp
Language support Japanese, English
URL www.kimumoku.jp
Establishment 1995
Representative Takayuki Kimura

五穀本造株式会社





As a manufacturer of Kaba-zaiku, a nationally designated, traditional craftwork, Tomioka Shoten desires to show not only Japan but the rest of the world this one of a kind artistry.

In doing so, we hope to contribute to the fulfillment of people's lives with our reusable, enriching tools that can last a lifetime.

"Living with the Mountains" Tomioka Shoten is located in a land surrounded by mountains. For generations, our forefathers have

carefully protected and cultivated these mountains while harvesting the wild cherry bark that is the material of "Kaba-zaiku" (cherry bark craftwork). Using a skill called "Koshin" (coppicing), we continue to preserve and receive the gifts of nature, praying that we will one day be able to pass them down to our future generations as well. Tomioka shoten is a company that lives with the mountains.

COMPANY

Name TOMIOKA SHOTEN CO., LTD.
 Products tea caddy, tray
 Address 71-3 Aza-Kumano Kami-Uguisuno
 Daisen-Shi Akita
 Tel +81-187-56-3239

Email kaba@tomioka-shoten.co.jp
 Language support Japanese
 URL tomioka-shoten.co.jp
 Establishment 1970
 Representative Koki Tomioka

TOMIOKA



027 asahi kensou corporation

Textiles/
Weaving

Woodcrafts

Glassware

Leather
Goods

Metalsworks

Ceramics

Household
Goods

Washi Paper/
Paper Products



Make everyone smile. That is the design of Daen. A smile will naturally spill just because there is a product there. Image of Kepler's law (first law) in which the planet turns in an elliptical orbit, we design the infinite possibilities that a large universe is spreading in a small product. Through the products, like Kepler's law spreading in space, I want to bring smiles to people in Japan and the world.

COMPANY



Name asahi kensou corporation
Products furniture store
Address 43 Aza Nadai Kubota Fuyamamachi
 Koriyama-Shi Fukushima
Tel +81-24-943-3195

Email info@asahi.e-arc.jp
Language support Japanese, English
URL www.asahi.e-arc.jp
Establishment 1979
Representative Tadashi Ouchi





We strive to convey the most adorable facial expressions and gestures of the Kokeshi dolls and the four seasons of Japan in a simple form of the dolls. We make cute Kokeshi dolls with rich expressions that customers will appreciate. Gunma prefecture has wealthy Mizuki wood (water wood) and winter breeze peculiar to Gunma to dry the wood which is suitable for producing Kokeshi dolls.

The first generation, Usaburo, devised not to draw with a brush, but to engrave it with a chisel, or to make a nichrome wire into a brush and burn it to draw a line.

COMPANY

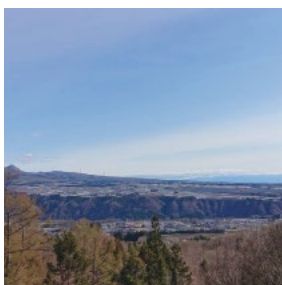


Name Usaburo kokeshi Co.,LTD
Products creative Kokeshi
Address 1591 Nagaoka Shintomura
 Kitagunma-Gun Gunma
Tel +81-279-54-6766

Email info@usaburo.com
Language support Japanese, English
URL www.usaburo.com
Establishment 1954
Representative Yuji Okamoto



Yoshizawa Wood & Lacquer Works



Ryoichi has born in 1963 in Numata City, Gumma Pref. as the 3rd generation of a renowned joiner in the region. Naturally been behaving as an artist, rather than just being a skilled craftsman. He enjoys to discuss and share thoughts and feelings with his clients. Conversations and inspirations from spending with his family and in the nature is the key element of his works.

Thinking back to my childhood, I had a longing for my grandfather, who created pieces in unique and stylish style, and my longing for him was the starting point of my career.

COMPANY



Name Yoshizawa Wood & Lacquer Works
Products tableware such as bamboo cups, furniture, and custom-made works (more than 70% of all orders are custom-made pieces)
Address 848-1 Togamimachi Numata-Shi Gunma
Tel +81-90-3436-8607

Email sashiyoshi1920@gmail.com
Language support Japanese, English
URL sashiyoshi.com
Establishment 1920
Representative Ryoichi Yoshizawa



Sekine Paulownia Products

Textiles/
Weaving

Woodcrafts

Glassware

Leather
Goods

Metalworks

Ceramics

Household
GoodsWashi Paper/
Paper Products

Sekine Paulownia Products is a 100-year-old, family-owned furniture factory in Japan. Kiri Craft is a Japanese traditional craft. We continue producing to protect the national paulownia woods and traditional Kiri products. Even our industry is so called endangered industry, we hang for the survival by outgoing to overseas.

Sekine Paulownia Products was founded in 1904 by the founder Kajuro Sekine as a Kiri Geta craftsman. Since then, 2nd generation Itaro Sekine, 3rd generation Asahi Sekine and 4th generation

Noriaki Sekine continue to manufacture and sell paulownia products. We are developing new products to preserve traditional Japanese paulownia crafts for the future generations.

COMPANY



Name Sekine Paulownia Products
Products paulownia products
Address 2-1-14 Wakaizumi Honjo-Shi Saitama
Tel +81-495-22-6127

Email info@sekinekiriya.com
Language support Japanese
URL www.sekinekiriya.com
Establishment 1904
Representative Noriaki Sekine



Toyota Sculpture Studio Co., Ltd.



Our company's principle is 'turning the art of living into action to leave an impression.'

In changing times, it is the heart that must remain unchanged. In particular, we must respect our predecessors history, with the same compassion and consideration in both mind and spirit that has established the Japanese culture. We hope to continue its legacy.

Our company makes sculptures for Bhuddist Shrines and Temples. After the Niko Toshogu and Showa's grand restoration in

1959 Yutaka moved from Kagawa prefecture to the capital and established the company.

We have been striving to keep true to the meaning and culture embedded in traditional construction. As well as delivering the creations sought after by our clients.

Textiles/
Weaving

Woodcrafts

Glassware

Leather
Goods

Metalsworks

Ceramics

Household
Goods

Washi Paper/
Paper Products

COMPANY



Name Toyota Sculpture Studio Co., Ltd.
Products wooden sculptures
Address 3652 Tomita Yoriimachi Osato-Gun
 Saitama
Tel +81-48-581-3650

Email toyot@cho-koku.net
Language support Japanese
URL www.cho-koku.net
Establishment 1959
Representative Yasunari Toyota





We design products match to modern gardening style and our theme is “fashionable, human and environment friendly”. We create “LES PETITES MAINS” for city veranda gardening, figures directed by gardeners. Gardening knives’s sharpness and comfortableness was made by Blacksmith’s hand skill. The handles are specially shaped for increased comfort and slip resistance with natural walnut.

We were founded by the second son of the farmer and the daughter of a Tokyo manufacturer. All our products are based on founder’s wish to make farmers’ lives easier with his tools, and wife’s love for nature. Although there were difficulties during those early days, they thought of the people whose livelihoods depended on their tools, and dedicated themselves to rapidly produce them. Their attitude of hard work and quality manufacturing was understood, nowadays orders come from all over Japan.

COMPANY

Name ASANO MOKKOUSHO.co.,LTD
Products gardening tools, snow removal tools, road construction tools, homeware
Address 2-11-23 Minamiyokkamachi Sanjo-Shi Niigata
Tel +81-256-32-1800

Email info@asano-mokkousho.co.jp
Language support Japanese, English, Korean
URL en.asano-mokkousho.co.jp
Establishment 1950
Representative Sadaei Asano





Textiles/
Weaving

Woodcrafts

Glassware

Leather
Goods

Metalworks

Ceramics

Household
Goods

Washi Paper/
Paper Products



We have started engraving temple ornaments for local shrines in 1939 at Sanjo, Niigata. We are located at Tsubame-Sanjo, rich earth and precision metalworking exist. We believe that the trauma of repeated flooding has helped to forge the indomitable spirit of our master craftsmen. In 2014, we opened our headquarters in the Yada district of Sanjo city as a combined factory and retail shop. The first generation was engraver, and he started manufacturing of pull-along ink-pots on wheels. He bought a pedal operated fret

saw from Kanazawa and through mechanization, huge leaps were made in terms of moving into mass production. The company continued to make other classical Japanese instruments and hand tools. The second generation moved into producing products using plastic and continued producing carpentry tools. In 2003, under the third generation, the company moved into the manufacture of chopsticks which is making their rich experience with ebony and shitan using traditional finishing techniques.

COMPANY



Name MARUNAO CO.,LTD
Products chopsticks, cups, cutlery, stationery, carpenter's tools
Address 1662-1 Yada Sanjo-Shi Niigata
Tel +81-256-45-7001

Email marunao@marunao.com
Language support Japanese, English
URL www.marunao.com
Establishment 1939
Representative Takahiro Fukuda





Buddhist statues and architectural techniques came from the Chinese continent about 1400 years ago. The technology has progressed in Takaoka after passing through Nara and Kyoto. Above all, Raden (Aogai lacquerware) which is using a unique technique of Takaoka, has supported the producing area. From classic patterns such as Kacho Fugetsu to modern patterns, items are tailored to the times.

In 1925, the founder Jisaburo started the production of lacquer ware at the Shibata Laquer Ware shop as a sculpture coating workshop. At that time, he mainly made household items such as tea cabinets, chests of drawers, partitions, and braziers, but gradually moved to tableware such as vessels. The engraving lacquer is a popular product that gives off its taste as you use it, and it was also popular for export. Tea utensils and flower utensils have been our main products since our establishment. Currently, we are also trying new fields such as Japanese accessories.

COMPANY

Name SHIBATA SIKKI CO.LTD
Products liquor utensils, plate, tray, tea utensils, writing utensils, stationery
Address 3-10 Akenomachi Takaoka-Shi Toyama
Tel +81-766-21-2102

Email ssk-v@sage.ocn.ne.jp
Language support Japanese, English
URL www.shibata-sikki.com
Establishment 1925
Representative Haruyuki Shibata





639, This is the address in deep Shimizu, Shizuoka where the workshop is. I named "Hikimono-sho 639" because I wanted to convey excitement and happiness through things from here.

There were many grinders who create any kind of round things such as dishes using woodworking potter's wheel and lathe before. However, only few remains. I continue challenging to hand down Shizuoka Hikimono.

COMPANY

Name Hikimonojo639 Corporation
Products woodworking products
Address 639 Nakagochi Shimizu-Ku Shizuoka
Tel +81-54-396-3883

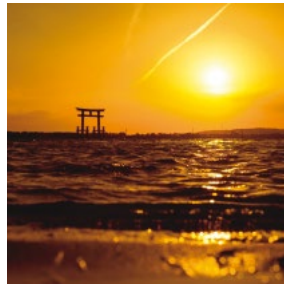
Email moyocami@hikimonojo639.com
Language support Japanese
URL hikimonojo639.com
Establishment 2015
Representative Toshifumi Momose



株式会社 639



Shizuoka



Our products are all hand made in Hamamatsu processing natural wood. Our producing concept is “Producing daily use products with craft skills”. In these days we are developing items which use local materials.

The founder Masaji Yamazaki, founded Toyooka Mokkou-jyo (Now Toyooka Craft Ltd.) after retiring YAMAHA. He produced Organ before World War Second, dram, guitar and piano after the war in YAMAHA as a leader of the craftsmen. During the war he made wooden propeller and tail of plane. So our company

take the technique producing musical instruments and warplanes. At the time of founding, we made frames of SEIKO clock and the founder instructed some subcontract companies of SEIKO as their request.

COMPANY

Name Toyooka Craft Ltd.
Products bookholder, fountainpen box, watch box
Address 1457-2 Nearaicho Kita-Ku
 Hamamatsu-Shi Shizuoka
Tel +81-53-436-2671

Email info@toyocraft.com
Language support Japanese, English
URL www.toyocraft.com
Establishment 1969
Representative Toru Yamazaki

Toyooka Craft



Shizuoka



Kawada area in Sabae city FUKUI pref. The biggest Shikki crafts area in Japan. We produce wooden traditional crafts with modern ideas.

Established in 1856. We have produced wooden crafts and shikki through 3 generations.

COMPANY



Name ism
Products wooden crafts
Address 10-1-601 Omiyahigashiwakidaicho
 Kita-Ku Kyoto-Shi Kyoto
Tel +81-90-3677-9653

Email maasaa999@gmail.com
Language support Japanese, English
Establishment 1856
Representative Masamichi Ishimoto

Textiles/
Weaving

Woodcrafts

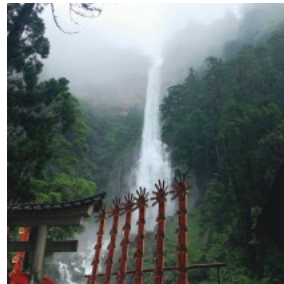
Glassware

Leather
Goods

Metalworks

Ceramics

Household
GoodsWashi Paper/
Paper Products



We have been on the path as a specialist of paulownia. By evolving the original traditional technique, we are not only manufacturing paulownia chests but also developing trends in paulownia accessory life miscellaneous goods.

Our company was founded in 1884. The words left by the third generation Haruo Higashi, which has been passed down as a corporate philosophy. "One-to-one materials, two-jobs" This word is faithfully observed, and the technique cultivated by the ancestors as a traditional craftsman is renewed without degrading the quality of the materials and without compromising each process. We are not content with the brand of "Traditional Craftsman", and we continue to take on further challenges to enhance our technological and brand power.

ty of the materials and without compromising each process. We are not content with the brand of "Traditional Craftsman", and we continue to take on further challenges to enhance our technological and brand power.

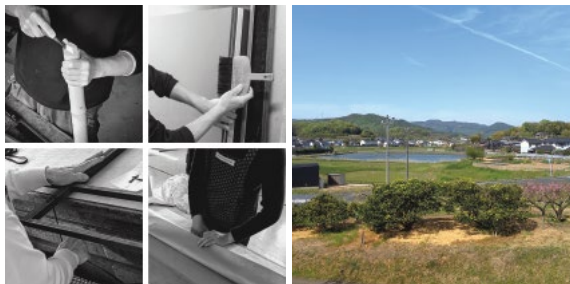
COMPANY



Name Paulownia furniture AZUMA Co., Ltd.
Products paulownia chest of drawers, paulownia miscellaneous goods, paulownia crafts
Address 1169-1 Nateichiba Kinokawa-Shi Wakayama
Tel +81-736-75-3600

Email info@azuma-kiri.jp
Language support Japanese
URL www.azuma-kiri.jp
Establishment 1891
Representative Fukutaro Azuma





We want to be “Shokka”, a maker. There are ten craftsmen, “Senke-jisshoku”, who produce the tool for Senke of the tea ceremony. We have prepared the tea service set since its formation. We inherited the technique, mounting a picture and wood work from generation to generation. As well as the production of the ready-made article, we perform repair, remake and an order by a request.

The founder, my grandfather, wanted to work who could convey Japanese traditional culture, learned mounting in Kyoto and began business as an art researcher in hometown Okayama. He devised a Fusuma and, the frame and the hanging scroll which overflowed in a rare modern sense for those days and attracted attention throughout the age. The topic caught eye of the person who run a tea service set shop in Osaka, and there was a fatal encounter. This was the trigger to begin the production of the tea service set.

COMPANY

Name KAMADA KOGEISHA Co.,Ltd.
Products tea things
Address 5978-1 Satomi Satoshochō
 Asakuchi-Gun Okayama
Tel +81-865-64-3216

Email info@hoshundo.jp
Language support Japanese
URL hoshundo.jp
Establishment 1948
Representative Motohiro Ishii



Dairi Lumber Co.,Ltd

Textiles/
Weaving

Woodcrafts

Glassware

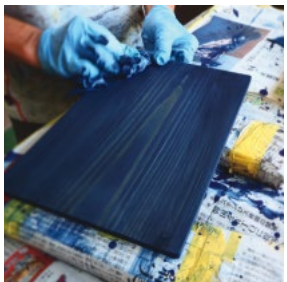
Leather
Goods

Metalworks

Ceramics

Household
Goods

Washi Paper/
Paper Products



Tokushima prefecture is Japan's biggest domestic producer of the indigo plant. By developing a unique paste-like substance from the traditionally-produced indigo and we treated it as a pigment rather than a dye. We established a technology that can be used as a paint or spray and applied it to designs that make use of grain as part of construction materials, interiors, or small objects.

Dairi Lumber offers interior and building materials including logs as residential building materials, and we have the largest market share in the Shikoku area in the manufacture of two-by-four home houses paneling. Recently we established an indigo coated materials technology that can be used as a paint or spray and applied it to designs that make use of wood as part of construction materials, interiors, or small objects.

market share in the Shikoku area in the manufacture of two-by-four home houses paneling. Recently we established an indigo coated materials technology that can be used as a paint or spray and applied it to designs that make use of wood as part of construction materials, interiors, or small objects.

COMPANY



Name Dairi Lumber Co.,Ltd
Products import and sales of raw woods manufacturing and sales: 2 x 4 members, conventional panel flooring, building materials, housing materials
Address 7-68 Tsudakaigancho Tokushima-Shi Tokushima
Tel +81-88-662-5505

Email info_abroad@dairinet.com
Language support Japanese, English
URL dairinet.com
Establishment 1959
Representative Takahiko Kohama

大和利木材



041 Morimoto Tategu Ten Ltd.,



The expression “Shuhari” refers to the three stages of achieving mastery of skills. “Shu” means to preserve. “Ha” means that the craftsman begins to express his own individuality. And “Ri” means in which the craftsman moves on to a different field of endeavor, applying his skills freely. We will continue our “Monozukuri”, applying the traditions and seeking out innovative new applications.

It is said, in those days, more than 100 housing parts were necessary and if 5-6 houses were built in a year, it was able to live. However, as the times advance, the Westernization of the lifestyle penetrates, and families establishing the Japanese-style room had decreased more and more. The demand for housing part decreased sharply. It was my father who was a cabinet-maker that saved from such situation. I use his techniques and work for furnitures as a housing part shop.

COMPANY

Name Morimoto Tategu Ten Ltd.,
Products wooden joinery
Address 176-1 Mitanicho Takamatu-Shi Kagawa
Tel +81-87-864-8872

Email mono-koubou@major.ocn.ne.jp
Language support Japanese, English
URL tategu-morimoto.com
Establishment 1947
Representative Takashi Morimoto



Textiles/
Weaving

Woodcrafts

Glassware

Leather
Goods

Metalsworks

Ceramics

Household
Goods

Washi Paper/
Paper Products



We have been carrying out integrated production from the lumber of high-quality raw wood to commercialization as a “MEIBOKU and material shop”. With the slogan “Energize the mountains”, we have been engaging in tree planting and reuse activities with materials of the Kirishima. We also try to maximize the appeal of “the beauty of nature created after hundreds of years of eternity,” in our products.

In the previous generation, we walked around mountains in Kyushu and purchased raw wood. Since high-grade logs are traded at a high price, we bought tens of millions of logs if they were expensive, and we thought about the cross section where to lumber to saw for 1-2 weeks. We done like that because we were so fascinated by the charm of trees. Our inventory of materials is still our weapon, and we would like to deliver them to you.

COMPANY

Name	HinamoriMeibokuCo,Ltd	Email	shop@hinamori.com
Products	material of Meiboku, Go, Shogi, chopping board, chopsticks	Language support	Japanese
Address	2101-1 Minaminishikata Kobayashi-Shi Miyazaki	URL	www.hinamori.com
Tel	+81-984-23-5051	Establishment	1949
		Representative	Yasuhiro Maruno





Founded in Tokyo in 1899, Hirota Glass has established itself as one of the pioneers of Japanese Glassware. In recent years, Hirota Glass has created its own signature style through harmonizing of European traditional glassmaking technique and Japanese artistry. While staying true to its classic designs and influence dating back to the pre-war period, Hirota Glass continues to push hand-crafted glass to its artistic limits.

1899 Kinta Hirota (1st generation) founded glass tableware sales.

1920-2002 Mr. Eijirou Hirota (2nd generation) expanded the business. Dedicated to the development of the glass industry in Tokyo.
2002-2007 Mr. Tatsuo Hirota (3rd generation) developed a new product with a focus on manual work. Contributed to the reconstruction of milky glass that was popular in the Taisho era. 2007 Tatsuaki Hirota (4th generation) became president.

COMPANY

Name Hirota Glass Co.,Ltd
Products Japanese and western glass tableware
Address 2-6-5 Kinshi Sumida-Ku Tokyo
Tel +81-3-3623-4145

Email hirota-g@hirota-glass.co.jp
Language support Japanese, English, Chinese
URL hirota-glass.co.jp
Establishment 1950
Representative Tatsuaki Hirota





The beauty of translucent yet hard glass Materials, holds various expressions through lights and echos with brilliant resonance. Applying Raden (mother of pearl) technique onto this glass Materials, and adding a finishing touch of lacquer creates “Raden glass”. Please enjoy this mystique glimmer of Raden glass while sipping Japanese sake.

Exploiting our traditional technique of Takaoka Lacquerware which has been cultivated since our inauguration in 1892. We have been dedicating to design products matching modern life.

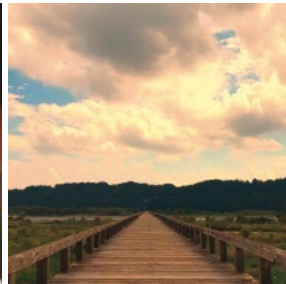
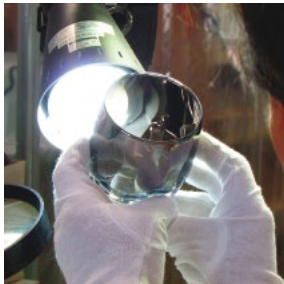
COMPANY

Name AMANOSHIKKI CO.,LTD
Products lacquerware
Address 245 Haoka Takaoka-Shi Toyama
Tel +81-766-23-2151

Email info@amanoshikki.com
Language support Japanese
URL www.amanoshikki.com
Establishment 1892
Representative Takahisa Amano

Amano





“Beauty” is inherently a value that is not affected by the color of eyes and the color of the skin, culture and faith, male and female sex. And “food” is the same which everyone spends the enjoyable time. “PROGRESS” proposes exciting and delicate new lifestyles by removing various boundaries and dressing up food.

“Progress” began with a single glass plate which was a test piece that are casually discarded at the production site. I began considering the way to show the people, the fascinating glow of the

glass that I saw. The joy I received from the glass plate I met at that time was the same as when I drank delicious wine, and the idea led to the birth of the glass. A story that makes the dining table a special space and enhances the taste from the visual sense just by having the glass of PROGRESS under the concept of “everyday is extraordinary.” The story of PROGRESS will continue.

COMPANY

Name Nissho Kogyo Co.,Ltd.
Products jewelry glass
Address 528-1 Nakagawa Shimada Shizuoka
Tel +81-547-38-1414

Email nissho@trad.ocn.ne.jp
Language support Japanese, English
URL nissho-kogyo.jp/wordpress
Establishment 2010
Representative Hiroo Konagai

PROGRESS



Shizuoka



We have been manufacturing blowing glass over 110 years. There were tough times that we taught to switch to automation. However, we didn't stop manufacturing Hizen-Vidro, which is the important intangible cultural property of Saga City, to protect its tradition. We love to make blowing glass and we know that handmade glassware have natural shape and beauty and that makes all the customer happy.

Our company roots come from that lord of Saga established organizations for the research of Western technologies in end of Edo period. There was a glass factory and founder of our company Genichiro Soejima worked from childhood. The factory have manufactured beaker and flask for experimentation and also daily necessities as glass bottles. After Meiji Restoration the factory started making lamp and tableware. Then Genichiro Soejima was independent and established Soejima Glassware Co., Ltd. in 1903.

COMPANY



Name Soejima Glassware Co.,Ltd.
Products blowing glass crystal glass
Address 106 Sayanomotomachi Saga-Shi Saga
Tel +81-952-24-4211

Email info@hizen-vidro.co.jp
Language support Japanese, English
URL www.hizen-vidro.co.jp
Establishment 1903
Representative Taro Soejima



Glass Works Tyuki



The Producer Emiko Yoshida grew up in a snow-covered rural town and became a glass artist. In order to learn Okinawa’s traditional craft “Ryukyu glass”, she moved to this land where colorful flowers and trees bloom all year. “TSUZURU Glass Art” combines the natural beauty of plants with the imperfections and simplicity symbolized by the concept of Wabi-Sabi.

One of the authentic senses which were cultivated in Japanese culture include the following; “human life is transitory, so live life to the fullest in the present”. This is the concept of “TSUZURU Glass Art”. Facing seriously to the plants and glass materials, every items are unique in the world. “TSUZURU Glass Art” will be completed when its used and collaborate by the customers’ everyday stories. We produce “White-HAKU-” series, “Sumi-” series which formed an impression of shade, and interior products(art boards) in our art works.

Textiles/
Weaving

Woodcrafts

Glassware

Leather
Goods

Metalsworks

Ceramics

Household
Goods

Washi Paper/
Paper Products

COMPANY



Name Glass Works Tyuki
Products glass experience business
Address 363-1 Yamada Onnason Kunigami-Gun
 Okinawa
Tel +81-98-989-0233

Email info@glasstyuki.com
Language support Japanese, English
URL tuzuru.jp
Establishment 1999
Representative Emiko Yoshida





Bags born by people's warm hands and living among people. We started our business in 1965 with Randoseru. Intimately used by children for 6 years. We, Tsuchiya-Kaban, always remember those memories will be staying there. It has to be sturdy for that. It has to be the very design for the bag-owned children as they grow. With these thoughts in mind, we started to make bags for adults.

In 1965, it was started by the founder of Tsuchiya-Kaban alone. Randoseru is a cherished bag, your child's partner of growth.

This is why we value simplicity and sturdiness that can be loved for a long time. We are continuing this Japanese craftsmanship without changing our beliefs. As a bag, it is not just about the functions but something that stays with our customers as a memory-carrier. From this wish, each of our products is meticulously made by hand.

COMPANY



Name Tsuchiya Kaban CO., LTD.
 Products leather bags and accessories
 Address 7-15-5 Nishiarai Adachi-Shi Tokyo
 Tel +81-120-907-647

Email info@tsuchiya-kaban-global.com
 Language support Japanese, English, Korean
 URL tsuchiya-kaban-global.com
 Establishment 1965
 Representative Masanori Tsuchiya

△ 小塚鞆屋通商





The “Arimatsu Shibori” tie-dyeing is a traditional industry in Arimatsu-Nagoya. Our products have been using this traditional technique with genuine leather. You can enjoy beautiful colors with white contrast, patterns and soft-touch with full of ups and downs. Our craftsman select high quality genuine leather and finish each of them by hand. You can also feel moist and the lightness of dyed surface.

We believe that traditional craftsmanship will survive if it is used in daily life. Ariatsu-Shibori “the tie-dyeing” is the method of resist dyeing where parts of the fabric are tied fold that creates white patterns in the places where dye does not reach. Cotton dyed fabrics have always been popular for Kimono, or summer clothing, for many years. Our products use cowhide instead of cotton fabrics in order to attract more young people and inherit to the next generation by producing handbags, clothing, and fashion items.

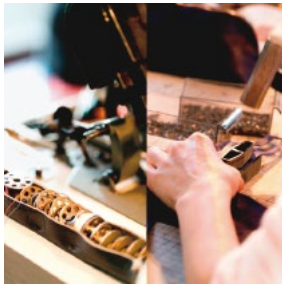
COMPANY



Name Enchant
Products genuine leather bag, genuine leather wallet, genuine leather accessory
Address 3560 Arimatsu Midori-Ku Nagoya-Shi Aichi
Tel +81-50-5437-4136

Email info@kukululeather.com
Language support Japanese
URL kukululeather.com
Establishment 2010
Representative Takahiro Sato





Tokunaga Bussan Co., Ltd. contributed to the traditional leather industry of Tatsuno City, Hyogo Prefecture, and has been a Tanner for a long time. Now we manufacture and sell leather products in the central city of Kobe, Hyogo Prefecture. We are working hard to spread the real value of the “craftsmen.” We will contribute to the community and society through leather and pass it on to the next generation.

Tokunaga Bussan Co., Ltd. was founded as a leather manufacturing industry (tanner) in Tatsutsu City, Hyogo Prefecture, whose grandfather, Yoshio Tokunaga, has a 70% share of the national market shortly after the war.

COMPANY

Name TokunagaBussan , Co, Ltd
Products leather products B to B, C business
Address 2F 3-5-5 Sannomiyacho Chuo-Ku
 Kobe-Shi Hyogo
Tel +81-78-585-7841

Email comodoz@tokunaga.co.jp
Language support Japanese, English
URL shop.comodoz.com
Establishment 2014
Representative Shozo Tokunaga





Iwate Steel Corporation was founded in 1949 in Kitakami City, Iwate Prefecture. The company has evolved and developed to meet the needs of the times. But no matter how much times have changed, the spirit of Iwate Steel remains the same. What is really important to humans, and how can we be happy? With such thoughts in mind, Iwate Steel is looking to the future for 100 years and creates a rich life for you using “ironware.”

In 1949, Iwate Steel Corporation was born with the aim of supporting the reconstruction of postwar Japan by making effective use of local charcoal and iron ore to produce iron. At present, the company has grown and developed to be responsible for the assembly and production of semiconductor-related equipment and precision processing machines. Based on our honed steelmaking and casting technologies, we continue to make great strides by realizing high quality manufacturing while flexibly responding to the trends and needs of the times, always looking at “happy lives for people.”

COMPANY



Name Iwate Iron Co.,Ltd.
Products ductile pan
Address 18-14 Wagachofujine Kitakami-Shi Iwate
Tel +81-197-73-5121

Email iwatetsu@iwateiron.co.jp
Language support Japanese, English
URL iwatetsu.jp
Establishment 1949
Representative Mitsugi Sato

Textiles/
Weaving

Woodcrafts

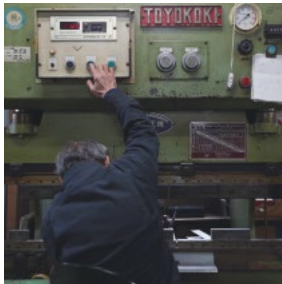
Glassware

Leather
Goods

Metalworks

Ceramics

Household
GoodsWashi Paper/
Paper Products



We are lighting manufacturer located at Yoshio-City Saitama-Pref. Please enjoy comfortable space by placing our lighting fixture. We hope that we help our users feel little more peaceful as well as smile little more. Mass production is not possible because manufactures make one by one with craftsmanship. We wish it to be used by those are interested in interior, design and light.

Ten years ago my uncle died and I became the CEO. Various serious things happened to the company, but thanks to the employees

and family, I was able to grow the company. From now on, we will deliver happiness to you with light.

COMPANY

Name Y.S.M Co.,Ltd.
Products lighting
Address 2-342-1 Yoshio-Shi Saitama
Tel +81-48-998-3610

Email info@k-ysm.co.jp
Language support Japanese, English
URL www.ysm-products.jp
Establishment 1992
Representative Tetsuya Yashima

Y.S.M PRODUCTS
100% CRAFTSMAN MADE IN JAPAN



Saitama

STUDIO BYCOLOR



I focused on wood because Japan is a country that 70% of the land is the forests.

Ten years of experience at an office furniture manufacturer and design office of a Dutch friend are the basis for the current STUDIO BYCOLOR activity. I work with various clients in an approach that makes use of the appeal of colors and materials. I am grateful that I am connected with attractive people through INHERENT:PATTERN.

Textiles/
Weaving

Woodcrafts

Glassware

Leather
Goods

Metalsworks

Ceramics

Household
Goods

Washi Paper/
Paper Products

COMPANY



Name STUDIO BYCOLOR
Products dairy products
Address 2-7-10 Nishikamata Ota-Ku Tokyo
Tel +81-50-3558-9425

Email info@studiobycolor.com
Language support Japanese, English
URL studiobycolor.com
Establishment 2013
Representative Kaori Akiyama

STUDIO BYCOLOR





Our “armor” is the ultimate traditional craft that is completed by 5,000 processes of gathering Japanese-specific technologies such as goldsmiths, woodwork, Kyoto woven fabrics, braids and leather crafts. In order to provide better products, we will continue to inherit the technologies inherited from the first generation, but further refine our original methods and sophisticated technologies.

We feel great joy and pride in being able to create “one treasure in a lifetime” for our children. We work hard to make products every

day, believing that our work will bring “smile” and “impression” to the people.

COMPANY

Name ANCHOR Co.,Ltd.
Products the traditional craft product Edo Kacchu (Edo armor)
Address 4F Hibiyakashi Bldg 3-28-15 Hatchobori Chuo-Ku Tokyo
Tel +81-3-6868-4172

Email info@tadayasu.shop
Language support Japanese
URL www.tadayasu.shop/en
Establishment 1969
Representative Narue Masuda





We have developed a lighting device that produces an artistic and optical effect. In this lighting device, a single light source that emits light downward from the upper part of the illumination body mounted on the illuminated surface is supported by the illumination body. The main feature is that the traditional Japanese craft Ise paper pattern is faithfully reproduced by photo-etching technique and metallized, and this metal plate is used for the irradiation surface.

The goal was to create a product that preserves this wonderful traditional Japanese technique and design. Focusing on Ise Katagami, which has a history of more than 1000 years, we aimed to create a work that can transmit the traditional Japanese kimono design to the world and introduce a wide range of Japanese traditional techniques. The point is how faithfully reproduce the delicate technique and design of hand-carving. The latest technique (photo etching) was used to solve this problem, and the detailed design was copied (metallized).

COMPANY

Name AKARI Co.,Ltd
Products interior lighting equipment
Address 3-16-6-524 Kuji Takatsu-Ku Kawasaki-Shi
 Kanagawa
Tel +81-44-813-1038

Email k-akari.co.jp/product
Language support Japanese, English
URL www.k-akari.co.jp/en
Establishment 2008
Representative Kanji Takahashi

Textiles/
Weaving

Woodcrafts

Glassware

Leather
Goods

Metalworks

Ceramics

Household
GoodsWashi Paper/
Paper Products



We manufacture and sell high-quality products from the user's point of view, using the prideful technology rooted in the Tsubame Sanjo area, which has the best metal processing technology in Japan. In addition, to make a step forward, we are working hard to develop innovative new products that make use of advanced blacksmithing techniques.

Founded in 1979. It started from one room of the predecessor's house. I was wholesale fishing gear used by fishermen. Twenty years ago, my predecessor's wife suffered a serious illness and was unable to go on a business trip. So I started selling cutlery, kitchen, DIY, and gardening goods made by Tsubame-Sanjo blacksmiths at the EC site "MURANOKAJIYA". We succeeded the business to the second generation eight years ago and planned and began selling outdoor goods seven years ago. At present, we sell original outdoor goods mainly on the Internet.

COMPANY

Name Yamatani Industry Co.,Ltd.
Products outdoor product
Address 2-2-57 Kitanyugura Sanjo-Shi Niigata
Tel +81-256-38-5635

Email muranokajiya@yamac.co.jp
Language support Japanese
URL www.yamac.co.jp
Establishment 1979
Representative Takenori Yamatani



Niigata





We “Artisan” aim to create new products that have never existed by adding extra effort and ingenuity to processing techniques supported by ancient traditions and history. We will offer products with the spirit of cherishing things without being spared the labor of handicrafts (“Artisan” means craftsman in French).

This coloring method is a traditional copper coloring technique that has been around for a long time in Takaoka City. Originally, the purpose is to color copper or brass, but this idea is to color it to

stainless steel products in Tsubame City. Since this coloring cannot be applied directly to the surface of stainless steel, the trial preparation was repeated many times and the coloring was successful. By performing this base treatment, stainless steel can be colored traditionally. Since this technology can be applied to various stainless steel products, many new product developments can be expected.

COMPANY



Name ARTISAN.LLC
Products metal daily necessities
Address 417-5 Haigata Tsubame-Shi Niigata
Tel +81-256-63-3446

Email artisan@aroma.ocn.ne.jp
Language support Japanese
URL artisan-web.jp
Establishment 2017
Representative Masayuki Nagasawa



Textiles/
Weaving

Woodcrafts

Glassware

Leather
Goods

Metalsworks

Ceramics

Household
Goods

Washi Paper/
Paper Products

Textiles/
Weaving

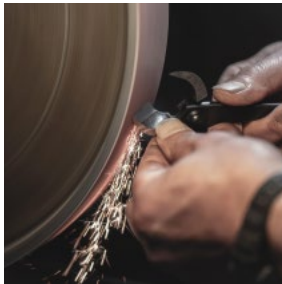
Woodcrafts

Glassware

Leather
Goods

Metalworks

Ceramics

Household
GoodsWashi Paper/
Paper Products

Suwada Blacksmith Works is located in the city of Sanjo, Niigata Prefecture, a place long known as one of the world's leading production centres for high-end cutlery. The company's history dates back to 1926, when its founder, Shukusaburo Kobayashi, began manufacturing kuiki-ri, or end-cut pliers, for carpenters in response to surging demand for new housing in the wake of the Great Kanto Earthquake of 1923

Suwada has specialised in particular in nipper-cutters that sever an object between a pair of perfectly joined blades, all the while insisting on a meticulous approach to consistency in manufacturing, from carefully selecting raw materials to applying the final touches by hand to finish every product. Although more than a few other enterprises in our industry have fallen by the wayside over the decades, we have not only successfully maintained traditional techniques but also continued to innovate here in the city of Sanjo, where quality materials and skilled craftspeople are in plentiful supply.

COMPANY



Name Suwada Blacksmith Works, Inc.
Products cutting tools
Address 1332 Koanji Sanjo-Shi Niigata
Tel +81-256-45-6111

Email suwada@suwada.co.jp
Language support Japanese, English, French
URL www.suwada.co.jp
Establishment 1926
Representative Tomoyuki Kobayashi

SUWADA





We manufacture high quality products by performing almost all of the processing steps in-house.

At the time of its founding, it manufactured Rasps, and then began to manufacture garden tools from kitchen tools.

COMPANY

Name Tomita Cutlery Co., Ltd.
Products outdoor knife, sickle, scraper, etc.
Address 623-1 Koseki Tsubame-Shi Niigata
Tel +81-256-62-4194

Email info@nisaku.co.jp
Language support Japanese
URL www.nisaku.co.jp
Establishment 1959
Representative Hiroshi Tomita

仁作
 NISAKU
 PROFESSIONAL TOOL
 MADE IN JAPAN





For over 80 years, we have been producing and providing products for tea ceremonies, such as iron kettles, cast utensils, and etc. With the aim to create products which can be used for long span, cooperated with local craftsmen and a kettle master of Yamagata Prefecture.

Miyazu Co., Ltd started as a wholesaler of kettles in Sengokumachi adjacent to Kanayamachi historical area known as a district of origin of Takaoka metal cast industry. As one of the few companies in Japan, who are professionals in casting tea utensils manu-

facturing, we are striving to contribute to the industry. We continue to disseminate “The beauty of Japanese handicrafts” to all generations in Japan and to the world.

COMPANY

Name MIYAZU Co.,Ltd
Products tea utensils, flower utensils
Address 3-18 Sengokumachi Takaoka-Shi Toyama
Tel +81-766-24-4321

Email miyazu@p1.tcnet.ne.jp
Language support Japanese, English, Chinese
URL miyaz.jp
Establishment 1983
Representative Takeshi Miyazu



Toyama



Takaoka-City is the production area of casting. We express simple but thoroughly prototype design by lost wax precision casting.

Takaoka-City, with its 400 year history, has avoided the ravages of war and still retains the old-time atmosphere of the Edo period. Since the first Kohachiro opened a metal casting workshop in 1860, Otera Kohachiro Shouten has been associated with Takao-ka Bronzeware.

COMPANY

Name Otera-Kohachiro-Shoten
Products bronze cast
Address 6-9 Kanayamachi Takaoka-Shi Toyama
Tel +81-766-25-1911

Email ootera@gmail.com
Language support Japanese, English
URL www.ootera.com
Establishment 1860
Representative Kota Otera

登録商標
 大塚製菓



Textiles/
Weaving

Woodcrafts

Glassware

Leather
Goods

Metalworks

Ceramics

Household
GoodsWashi Paper/
Paper Products

Syouryu is the proprietary brand of Shimatani Syouryu Koubo, a workshop that has been specialized for manufacturing orin bowl gongs for Buddhist temples since its establishment in 1909. Our aim is to continue making new products using this metal hammer. Our company values spirit of production which is accumulated by making a Buddhist bell. We hope your life will be better by using our products.

In the Edo periods, Takaoka city was known for the metal industry. There are a lot of craftsman. They made a pot, vase, kettle and Buddhist fittings. Our company has been founded since Meiji era. We passed on our traditional skills from father to son. We make the Rin (Buddhist bell) from the board of brass by hand. We use many kinds of hammer, anvil and backing metal for each process. The number of tools is more than one hundred. We have been developing the skills and pursuing the most comfortable sound of Rin. Our products are cherished in Eiheiji-Temple(Fukui) and Nanzenji-Temple(Kyoto).

COMPANY

Name Shimatani Syouryu-Koubo Inc.
Products buddhist fittings, tin products
Address 4-2 Sengokumachi Takaoka-Shi Toyama
Tel +81-766-22-4727

Email info@syouryu.com
Language support Japanese
URL www.syouryu.com
Establishment 1909
Representative Kumekazu Shimatani



Kanamori Alloy CO., Ltd.



In the Edo period, which is 300 years ago, the founder of the Kanamori family, Yaemon Kanamori, built the foundation of Takaoka casting town. He was one of the seven casters who served Lord Kaga Toshinaga Maeda. In the Reiwa period, we have created a new lifestyle brand “KAMAHACHI” that incorporates modern essences into the sand casting technology that we have inherited.

We have changed casting products according to the time, for example a pot for cooking rice, a temple bell, iron alloy and nonferrous alloy.

rous alloy.

Our technological precision is high, and even the directional board in the top of Mt.Hakusan where a name was known as a power spot and the part material of the H-IIA rocket (Mitsubishi heavy industries) has a large number of manufacturing results.

The manufacturing process is ecology. We dissolve the newspaper printing plate by about 800 °C of hotness, and make it fit in Japanese Industrial Standards by original technology.

COMPANY



Name Kanamori Alloy CO., Ltd.
Products press mechanical parts, rocket associated part, food processing machinery part and "KAMAHACHI" life style goods
Address 6-100 Matsumura Kanazawa-Shi Ishikawa
Tel +81-76-267-3003

Email kanamori@p2222.nsk.ne.jp
Language support Japanese, English
URL www.kanamori-g.co.jp
Establishment 1714
Representative Kazuharu Kanamori



Textiles/
Weaving

Woodcrafts

Glassware

Leather
Goods

Metalsworks

Ceramics

Household
Goods

Washi Paper/
Paper Products



With 22 years of Jewelry craft experiences, we have been working to produce a new iron casting products, by making various samples to achieve its thickness of 1.5 mm that is beyond the thickness limit of iron casting industry, and now we are proudly able to introduce a new type of bell product with thinner wall, lighter weight, good functionality, and superb design.

68 years of continuous experiences since the establishment, Koana Foundry LLC is a casting foundry that mainly manufactures and

sells mechanical parts. Koa Cute was established as an individual enterprise with full support of Koana Foundry's technology that is especially good in producing thin dimensional small products, and we closely review feeling and appearance of original casting surface and sound tone, and wish to regain new application for iron casting products that used to be more related to our ordinary daily life. We planned an iron casting bell as cheer up supporting goods by integrating with sport activities.

COMPANY



Name KoaCute
Products curling bell, Chochirin
Address 4-4-18 Shimoiida Kofu-Shi Yamanashi
Tel +81-90-4060-0313

Email info@koa-cute.com
Language support Japanese, English
URL koa-cute.com
Establishment 2016
Representative Yukari Koana





We are located in Seki city, where has a history of blade manufacturing over 800 years. We put the effort into scissors development mainly and carry planning production series of work. We are now focusing on developing our own products. Particularly, our original Japanese sword design scissor collected 10 Million Japanese yen at the crowd funding for its production. It is still our popular product.

Our business started as designing and repairing machines for blade manufacturing. Year by year, we began producing developing our own products hoping to spread them to the society. Moreover, to be a company that could act globally, we learned trade and expand our business to overseas.

Textiles/
Weaving

Woodcrafts

Glassware

Leather
Goods

Metallworks

Ceramics

Household
Goods

Washi Paper/
Paper Products

COMPANY



Name NIKKEN CUTLERY CO., LTD
Products scissors, cutlery, knife, nail clippers, letter opener, etc.
Address 12-16 Higashi-Kashiage Seki-Shi Gifu
Tel +81-575-24-0161

Email info@nikken-cutlery.com
Language support Japanese, English
URL www.nikken-cutlery.com
Establishment 1946
Representative Yuji Kumada





We have developed our companies 100th anniversary commemorative model of steak knives. Utilizing our manufacturing know-how for steak knives, which has been shipped more than 15 million items overseas, we have developed the high-grade steak knife “Nami” as the first model. The second model “Zuiun” was developed as a Kiritsuke-type knife based on the image of the sharpness of the Japanese sword.

Seki Kanetsugu Cutlery Co., Ltd. was founded in 1918 by Matsujiro Kawamura, the first president who is a descendant of the swordsmith “Kanetsugu” and a knife manufacturer. Seki Kanetsugu Cutlery Co., Ltd., which inherits the tradition of swordsmith, aims to realize the quality of Japanese swords that is indispensable for the present knife, “unbreakable, unbendable, and sharpness.” This has been achieved by combining innovative modern technologies such as CNC grinding machines and laser welding with traditional craftsmanship.

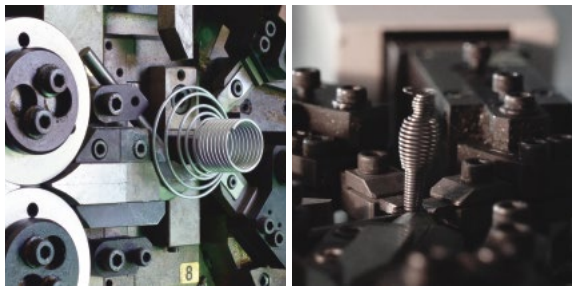
COMPANY

Name Seki Kanetsugu Cutlery Co., Ltd
Products kitchen knife, steak knife, bread knife
Address 345-13 Hidase Seki-Shi Gifu
Tel +81-575-22-1731

Email info@sekikanetsugu.co.jp
Language support Japanese, English
URL www.sekikanetsugu.co.jp
Establishment 1918
Representative Mitsuyasu Kawamura



067 Enshu Spring Co.,Ltd



Our spring will provide a skipping heart. Most of the words that express spring are words will lighten you up. But a spring which has a happy image is always supporting your daily life behind the light, only just as parts. From this reality and from our (Enshu Spring) strong feeling, SPRING SPRING project started. We are going to produce a spring that will act on feelings.

SPRING SPRING project requires engineers and designers designing equipment and products to inspire ideas for new uses of springs and to convey the processing characteristics of springs in an easy-to-understand manner so that they can be actively used. For example, "SPRINGMAN" means "the outer diameter of the spring can be freely controlled." "SPRING FOREST" incorporates new ideas that go one step further than existing uses, such as "the spiral helix can be used as a screw hole." SPRING SPRING's products are created by thinking and erroring for dozens of hours in front of the processing machine.

COMPANY



Name Enshu Spring Co.,Ltd
Products coil spring, SPRING SPRING products
Address 10-9 Minamihiramatsu Iwata-Shi
 Shizuoka
Tel +81-538-66-2354

Email info@spring-spring.jp
Language support Japanese
URL www.spring-spring.jp
Establishment 1954
Representative Kosuke Awaya



Textiles/
Weaving

Woodcrafts

Glassware

Leather
Goods

Metalsworks

Ceramics

Household
Goods

Washi Paper/
Paper Products



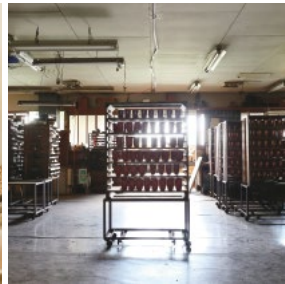
Based on the traditional techniques and wisdom cultivated in the history of more than 180 years since its founding, we are specialized in Orin. Which is made by “Sahari”, a type of bronze, and traditional baking casting method. We are one of the few workshops in Japan that manufactures it. We manufacture it by hand one by one.

COMPANY

Name Nanjo Kobo Co.,Ltd
 Products Kyoto buddhist fittings
 Address 42-2 Senzoku Makishimacho Uji-Shi
 Kyoto
 Tel +81-774-22-2181

Email info@linne-orin.com
 Language support Japanese
 URL linne-orin.com
 Establishment 1839
 Representative Koji Nanjo





KISHU+ is a new Japanese lacquerware brand from Wakayama prefecture Japan. Kishu is the main lacquerware producing area in Japan and started to incorporate with modern technologies earlier than other local producing areas for more easily use of lacquerwares. Keeping great respect for traditional hand craftsmanship, we are challenging to go forward with more liberal approach.

Yoji Hashimoto, the president, Hashimoto Shitugei Co.,Ltd; strongly wanted to make it come true the following three dreams.

“To enhance Kishu lacquerware branding and let the market and consumers know more about its wonderful value.” “To export attractive new Kishu lacquerware products to overseas markets.” “To launch a new business with great potential in the future and pass it on to the next generation.”

COMPANY

Name KISHU Plus LLP
Products high-grade Interior lighting and other products
Address 85 Hatayashiki Nishinocho Wakayama-Shi Wakayama
Tel +81-73-482-7630

Email info@kishu-plus.jp
Language support Japanese, English
URL kishu-plus.jp
Establishment 2019
Representative Takemi Senda

KISHU+



Textiles/
Weaving

Woodcrafts

Glassware

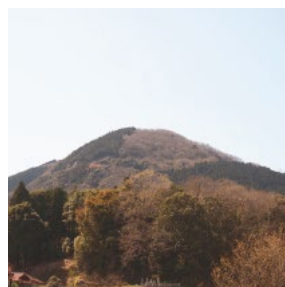
Leather
Goods

Metalworks

Ceramics

Household
Goods

Washi Paper/
Paper Products



We make simple lines without excessively modifying the material. We are good at sublimating heavy and hard image iron (metal) into light and soft warmth. In addition, we are developing products that combine different materials such as cloth, leather, and glass with the cooperation of local and local craftsmen. In the next attempt to draw, we would like to make a chair with the cooperation of Miura Rattan.

Thoughts at the time of foundation, I had a desire to make the presence of iron, which is a solid, hard and strong image of Europe and the United States, familiarize Japanese people. I made up my mind to tackle waviness, loneliness, and making simple and simple things. I was determined to be honest and honest in making things while being close to the sensibilities inside myself as a Japanese person.

COMPANY

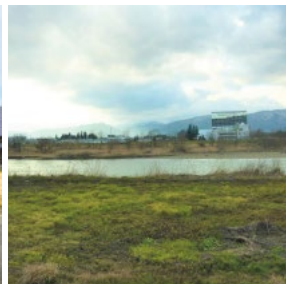


Name YOSUI
Products constructionhardware, furniture, shopfurniture, shopsign and so on
Address 1170-4 Yukicho Fushitani Saeki-Ku Hiroshima-Shi Hiroshima
Tel +81-70-5677-5919

Email contact@yosui.info
Language support Japanese, English
URL www.yosui.info
Establishment 2006
Representative Yosui Tsuji



Narushimayaki Wakuigama



We have a 250 year history of continuing the traditional Narushima Yaki, our aim is to keep on protecting our tradition. All of our work is done by the hand of skilled craftsman's hand with their full of emotion. Our work is formed with a potter's wheel and Slab forming, the shape is the same but each one has a different expression and the scene.

Narushima Yaki was established as a potteries of the Yonezawa Domain in the middle of the Edo era, as a part of industry promotion under the instruction of Yozan UESUGI. Narushima Yaki reached their peak at the end of Taisho Era, but then disappeared. At the beginning of Showa Era, our grandfather Toshizo WAKUI who was the second son of "Shin Kame Ya" a potteries of Hirashimizu Yaki in Yamagata city, moved to Nagai city for the better pottery clay. Then he started his own business manufacturing and selling of clay pipes to succeed.

COMPANY



Name Narushimayaki Wakuigama
Products pottery and porcelain works
Address 1812 Imaizumi Nagai-Shi Yamagata
Tel +81-238-88-9205

Email o.c.wakui@topaz.plala.or.jp
Language support Japanese
Establishment 1830
Representative Osamu Wakui





Since around 1700, we inherited “Obori Soma ware” as our family business, and the present owner is now the 16th generation. However, due to the nuclear power plant accident following the 2011 Great East Japan Earthquake, the kiln was forced to relocate to Koriyama city. We reopened our business in 2014, but we think it is natural to make new products rooted in the local climate in the new town.

After reopening the business in 2014, We found that Koriyama City also has clay. However, the clay was used in the manufacture

of roof tiles, and it could not be used as it was because of the large amount of impurities. However, fortunately, we succeeded in purifying it with a simple method and were able to start using it. Originally, Koriyama City was not a production center of pottery, so the existence of this clay has led to my great motivation for production.

COMPANY

Name Asakano-gama
Products tableware such as plates and bowls
Address 1-12 Nakano Koriyama-Shi Fukushima
Tel +81-24-973-6320

Email gakudo@asakano.net
Language support Japanese, English
URL www.asakano.net
Establishment 1700
Representative Yoshihiro Shiga



Fukushima



Textiles/
Weaving

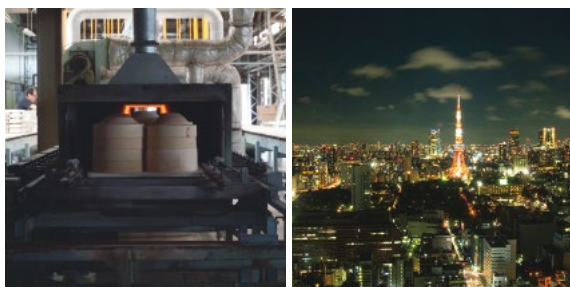
Woodcrafts

Glassware

Leather
Goods

Metalworks

Ceramics

Household
GoodsWashi Paper/
Paper Products

Our motto is “beauty in diverse modernity.” In the situation that recent modernity means a mixture of multiple cultures, we would like to be a bridge to connect between Japanese tradition and overseas countries. Japanese culture is often considered as dissimilar because of its uniqueness, whereas many people admire the beauty of traditions in Japanese culture. We desire to change the situation and make more people feel familiar with Japanese culture to notice that it can fit in the different cultural backgrounds.

We started our business during my son was studying abroad in New York City. Our first step was to select and bring some traditional Japanese craftworks to Japanese residents in there. Afterward, I also meet many people with different cultural backgrounds and started to introduce the craftworks to them. Through the experiences, I surprised by their different usage of the products and realized there is a considerable chance to fit Japanese culture into their lifestyles. This experience also led us to connect between Japanese and the other cultures, and produce valuable products, which can be attractive in many cultural backgrounds.

COMPANY



Name Duke Co., Ltd.
Products porcelain
Address Tokyo
Tel +81-3-6315-6304

Email goodgoods@duke-japan.co.jp
Language support Japanese, English
URL www.duke-japan.co.jp
Establishment 2015
Representative Noriko Uebo



074 Jusengama

Textiles/
Weaving

Woodcrafts

Glassware

Leather
Goods

Metalworks

Ceramics

Household
Goods

Washi Paper/
Paper Products



We are producing vessels using crystal glaze in the Mino ware production area. We can't mass-produce it, but we are making fun vessels with good quality. We will appreciate if you could enjoy your daily life by using your own vessels.

We continue producing while looking for a little hint of success in many tests and failures.

COMPANY



Name Jusengama
Products tea ware, sake ware
Address 4-65-5 Kitamachi Tajimi-Shi Gifu
Tel +81-572-22-0873

Email info@jusengama.com
Language support Japanese
URL jusengama.com
Establishment 1972
Representative Hiroyasu Ando





I know the goodness of Yokkaichi clay pot, which is traditional, but can't I make a clay pot like never before? We developed a product that is as good as cast irons by developing materials and glazes that combine heat-resistant strength and material strength. Today, we have the technology to supply ceramic parts for home appliance manufacturers.

The founder's important focus was the spirit of the merchants which try to contribute to the local community by the seller and

the buyer flourish together. In 2015, Miyao company Limited became a subsidiary and aiming for further development.

COMPANY

Name MARURI TAMAKI RIKIZO SHOTEN CO.,LTD.
Products ceramic ware
Address 975 Oroshi Toki Gifu
Tel +81-572-57-7111

Email koketsutt@maruri.ne.jp
Language support Japanese, English
URL www.maruri.ne.jp
Establishment 1964
Representative Kiminari Tamaki





Ceramic Japan's spirit is to produce high quality products while taking advantage of division of labour which have developed over a long period of time in Seto. In the product development, we repeat the trial and error for model making and mass production while respecting the idea of designers who are active in a wide range. We also value communication and relationship with the craftsmen.

In 1973 Ceramic Japan launched its own brand to create high-valued porcelain products leading the new era of ceramic design. The

firm based in Seto, Aichi Prefecture. Started as a small firm with no reputation or credential, we applied to several design competition both at home and abroad such as the Good Design Award from the Ministry of International Trade Industry and Design Collection of the high-end department store of Ginza Matsuya, for the purpose of earning reputations. We never forget the challenges we have done, follow our policy and always keep passion and enthusiasm alive.

COMPANY

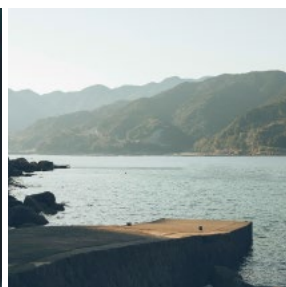
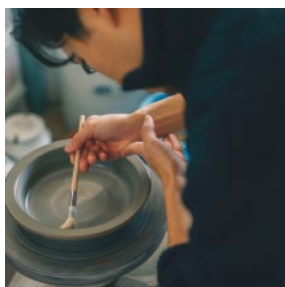
Name Ceramic Japan Co., Ltd.
Products ceramics, porcelain, earthenware
Address 60-4 Nakashinanocho Seto-Shi Aichi
Tel +81-561-42-0182

Email mail@ceramic-japan.co.jp
Language support Japanese, English
URL www.ceramic-japan.co.jp
Establishment 1973
Representative Masayuki Ohashi

ceramic japan



Aichi



Since our establishment, we use raw materials carefully selected from around the world to create its original clay and glazes. Based on the concept of “Kitchen to Table”, we designed this product to be used as a tableware to enjoy hot food on the table. It is also designed for storage and can be stacked. The colors of the pots and pans are the colors of the rocks in Mie Prefecture, where we live.

In 1932, our great-grandfather started the business independently with the aim of making hit products of Bankoyaki by himself.

Under his teachings, we have taken on the role of delivering Ginpo's high quality earthenware pots to the world. Last year, The subsidiary of Ginpo was renamed under the fourth generation of Ginpo, to plan original products for new customers and establish a system to sell them domestically and internationally. The company name G.M.P. stands for Gathering Makes Peacefulness, with the hope that people will live a happy life by using earthenware pots and pans.

COMPANY

Name G.M.P. Inc.
Products earthenware casserole
Address 13-25 Mitsuyacho Yokkaichi-Shi Mie
Tel +81-59-330-5156

Email info@gmp-inc.jp
Language support Japanese, English, Spanish
URL gmp-inc.jp
Establishment 2005
Representative Seita Kumamoto

G.M.P.



Textiles/
Weaving

Woodcrafts

Glassware

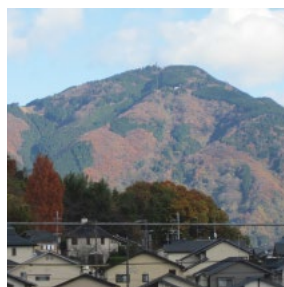
Leather
Goods

Metalworks

Ceramics

Household
Goods

Washi Paper/
Paper Products



In Kyoto, where there are no raw materials, custom-made products are the main product, and there is a culture of using fond things for a long time. According to the times, we continue to make pottery that is easy to use and close to our daily lives. Among them, the “Pelican teapot” symbolizes the Shinroku kiln which has been loved by many customers for 60 years because of its ease of use.

At Shinrokugama, we manufacture Kyo-yaki teacups and teapots that are mainly used for everyday use. It is a pottery that has

been in Kyoto for three generations. Even now, I try to make pottery that has the simplicity and simplicity of folk art inherited from my grandfather, and the elegance of Kyo ware. Our strength is that our founder Shinroku Tsuji has a variety of glazes and designs that can meet the needs of our customers, making the most of the knowledge he gained from the Tokyo Institute of Technology (now Tokyo Institute of Technology).

COMPANY



Name Shinroku Co.,Ltd
Products ceramics
Address 322 Iwakurahataedacho Sakyo-Ku
 Kyoto-Shi Kyoto
Tel +81-75-721-3770

Email kyoto@shinroku.com
Language support Japanese
URL pelicankyoto.jp
Establishment 1932
Representative Mika Kyotani





creativity. While continuing the tradition of Kyoto and Kiyomizu ware from Ninsei Nonomura and Kenzan Ogata, we are constantly working on technological innovation and continue to create works that distinguish it from other Kyo ware and Kiyomizu ware.

Currently, the fourth generation Yoshiaki Dobuchi is the owner of the pottery. We want to create gorgeous and original works, and to create vessels that will enrich our modern life, and we are doing a lot of works with flowers as the motif.

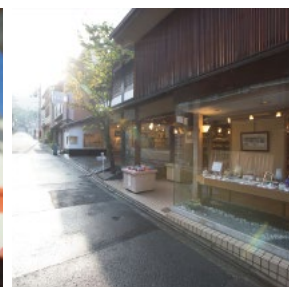
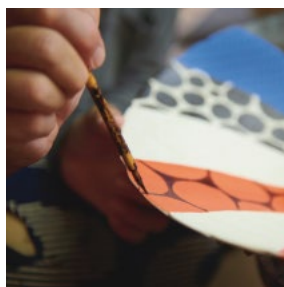
Kyoyaki, Kyomizu ware pottery and Touanare founded in Higashiyama Sennyuji in Kyoto in 1922, and since then they have been using the finest raw materials and handicrafts by skilled craftsmen. The work has been well received for its quality and

COMPANY

Name Touan Co.,Ltd
Products ceramics and porcelain
Address 38 Sennyuji Torincho Higashiyama-Ku
 Kyoto
Tel +81-75-541-1987

Email info@touan.co.jp
Language support Japanese, Chinese
URL www.touan.co.jp
Establishment 1922
Representative Yoshiaki Dobuchi





I developed these products on the theme of “table entertainment”. This series will be a collaboration between designer Kazushige Miyake and ceramic artist Nobuyuki Ogawa. This brand expresses a modern and avant-garde worldview. When a plate and a box plate are arranged, the semicircle is connected. This expresses the edge connection.

I am mainly engaged in retail store management of Kyo-yaki and Kiyomizu-yaki. At the same time, I am engaged in product planning and development and manufacturing wholesale businesses. I plan and propose original products for customers under the theme of “Creating new value with customers.” I will inherit the tradition of Kyo-yaki and Kiyomizu-yaki and customize them to the contemporary life style, and create a new Kyo-yaki and Kiyomizu-yaki style.

COMPANY



Name TOHGORO Co., Ltd.
Products pottery, ceramic
Address 6-539 Higashi Gojobashi Higashiya-
 ma-Ku Kyoto
Tel +81-75-561-0056

Email info@tohgoro.co.jp
Language support Japanese, English
URL tohgoro.co.jp
Establishment 1992
Representative Koji Azai

東五六





I wanted to get a job to pass down the Japanese culture, so I started producing when my interest in food shifted to interest in vessels.

Thoughts are deep, but what I create as a form is simple and easy to understand.

Since we think that food vessels will be completed with a large number of dishes, we try to keep them simple and easy to handle.

Also, because we think that the appearance is an important factor, we use “use and design” as a basic concept, and try not to make something that is easy to use but not beautiful.

I've always wondered what to do. I did photos and pictures, and I was interested in various things, but I couldn't decide. I liked cooking, so I was wondering if the chef would be good, but I was still lost. However, I was interested in traditional crafts and culture, and had a strong desire to be involved, so in that sense, I wonder if pottery has both.

COMPANY



Name narutaki
Products pottery
Address 461 Irinaka Bizen-Shi Okayama
Tel +81-869-67-3328

Email bizen.narutaki@gmail.com
Language support Japanese
URL www.bizen-narutaki.com
Establishment 2008
Representative Kiko Ando

Textiles/
Weaving

Woodcrafts

Glassware

Leather
Goods

Metalworks

Ceramics

Household
GoodsWashi Paper/
Paper Products

082 Imarishokai Co., Ltd.

Textiles/
Weaving

Woodcrafts

Glassware

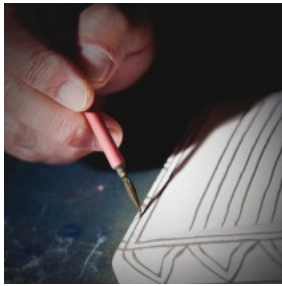
Leather
Goods

Metalworks

Ceramics

Household
Goods

Washi Paper/
Paper Products



Our company, Imaritoen, is a work shop which produces Imari ware. It was established in 1968. We have been maintaining the designs of “Chitojin”. He was the first Japanese potter to have a solo exhibition in the British museum. The ceramic tableware produced by us is all handmade and of high quality.

Imaritoen was established in 1968. In the 1965's, Imari ware and Arita ware were mass-produced and mechanized. Contrary to that trend, our company wanted to produce handmade goods one by

one carefully. We choose the best wisely about the tools used as well as the raw materials.

COMPANY

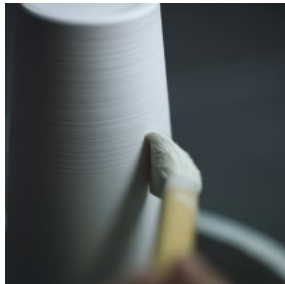


Name Imarishokai Co., Ltd.
Products Imari ware
Address 1813-1 Okawachicho Otsu Imari-Shi Saga
Tel +81-955-22-3080

Email info@imarishokai.co.jp
Language support Japanese
URL www.imaritouen.co.jp
Establishment 2002
Representative Sayuri Kaneko



Yamahei Kamamoto Corporation



Arita ware has celebrated its 400th anniversary as the birthplace of Japanese porcelain. While respecting the tradition and culture cultivated by our predecessors, we would like to create a new form of Arita ware that matches the modern living space.

The 47th year since the founding of the founder started. Since that time, we have been producing tableware for inns and hotels.

Textiles/
Weaving

Woodcrafts

Glassware

Leather
Goods

Metalsworks

Ceramics

Household
Goods

Washi Paper/
Paper Products

COMPANY



Name Yamahei Kamamoto Corporation
Products table ware(Arita ware)
Address 2267-1 Otu Kuwakoba Arita
 Nishimatsuura-Gun Saga
Tel +81-955-42-2459

Email info@yamaheigama.co.jp
Language support Japanese
URL www.yamaheigama.co.jp
Establishment 1972
Representative Hirofumi Yamamoto





In 2017, we developed heat resistant tableware “HACHI” as a new brand. General porcelain and Arita porcelain are fired by reduction as a firing method, but heat-resistant porcelain can be produced only by oxidation firing. Even in Arita, there are few kilns that manufacture heat-resistant tableware. We will continue to stick to in-house production in order to establish the “Hachiemon” brand as a potter.

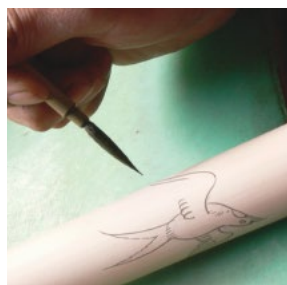
Our company was founded as Moriko Seitoshō in 1891, and has been operating as a pottery since then. Established Daqing Co., Ltd. in 1986, incorporated it as a manufacturing and sales company, and changed the organization to Daqing Co., Ltd. in 1994. For the past 25 years, the activity as a trading company has been the main activity. The kiln name is “Hachiemon Kiln”. Currently, she has a store in Arita Sera. Furthermore, recently, “HACHI,” which was developed and launched for overseas markets, has been well received.

COMPANY

Name DAIKEI Co., Ltd.
Products Arita ware
Address 1162-12 Otsu Shimoyamadani Aritacho
 Nishimatsuura-Gun Saga
Tel +81-955-46-2323

Email info@daikei-arita.jp
Language support Japanese
URL daikei-arita.jp
Establishment 1986
Representative Yoshihisa Mori





Shimabun is one of the leading grating manufacturing companies in Japan; pioneer and specializes in water drainage products and universal design building materials. The company was founded in 1871 focus to research and develop building materials that are safe, easy and comfortable to use regardless any ages.

Our reputation as an OEM company; supplying linear drainage for TOTO, Lixil and other renown trading partners in Japan for more than two decades. For us, quality is the standard and safety

are our priority. A very important characteristic of our products is its resilience, no matter the location or climate. We are currently working closely with our regional sales representatives in Malaysia, Singapore, Thailand, Taiwan and Philippines in numerous number of projects. Please visit our official website to find details about our product range.

COMPANY



Name SHIMABUN Co.,Ltd.
Products drainage unit with trap, stainless steel mirror, paper holder, ceramic interior bar, stainless and wood grating
Address 2488-5 Eguchi Miyakicho Miyaki-Gun Saga
Tel +81-942-89-5235

Email toiawase@shimabun.jp
Language support Japanese, English
URL shimabun.com
Establishment 1871
Representative Nobuhide Shima

SHIMABUN Co., Ltd.



Textiles/
Weaving

Woodcrafts

Glassware

Leather
Goods

Metalsworks

Ceramics

Household
Goods

Washi Paper/
Paper Products



Kinshodo is located in Arita, where has continued to be one of Japan's leading porcelain producing areas since 1616. Our "Lin" series and unique colors are supported by Arita's outstanding craftsmanship. In addition, the anti-bacterial and anti-virus coating technology of "Lin NY +" was developed by Saga Prefecture. By making full use of such local skills, we will create world-class manufacturing.

Linzo Kaneko was an excellent painter who was active around 1900. It became the origin of the "Lin" series. He received the first prize at the Arita International Ceramic Exhibition at that time. He is the great-grandfather of the current president of Kinshodo. Kinshodo was founded by Teruo, Minato in 1961, the parents of the current president. At the time of our founding, we didn't have the funds. However, Teruo, who had a serious personality, worked hard and gained the trust of his business partners and expanded the sales channels.

COMPANY

Name Kinshodo Co., Ltd.
Products Arita porcelain
Address 2351-169 Akasakahei Aritacho
 Nishimatsuura-Gun Saga
Tel +81-955-43-2007

Email kinshodo@peace.ocn.ne.jp
Language support Japanese, English
URL www.kinshodo-shop.co.jp
Establishment 1961
Representative Shinji Kaneko



Kouraku Kiln Inc.



The Kouraku Kiln was founded in 1865 in Arita, Saga Prefecture, where Japan's porcelain originates. For over 150 years the kiln has operated without interruption. Today, run by the 5th generation, the kiln is producing and designing modern and classic Arita ware. Now artists from around the world come to learn from the kiln's skilled craftsman and this allows creative atmosphere to the kiln.

The Tokunaga family is part of the Lee Sanpei clan, the founder of Arita ware. Because they had no successor at the end of the Edo period, the Yoshi-emon kiln adopted Torasuke the first. This first generation produced porcelain brazier. The second generation produced household tableware. The third generation, along with the surrounding kiln in Arita, produced war time goods. The fourth generation created a line of commercial tableware. The fifth and current president is actively designing and producing modern and classic arita ware that is inspired by the essence of Japanese culture.

COMPANY

Name Kouraku Kiln Inc.
Products Arita ware (porcelain), treasure hunting
Address 2512 Hei Maruo Aritacho
 Nishimatsuura-Gun Saga
Tel +81-955-42-4121

Email kouraku.jp@gmail.com
Language support Japanese, English, French
URL kouraku.jp.net
Establishment 1865
Representative Takanobu Tokunaga



Textiles/
Weaving

Woodcrafts

Glassware

Leather
Goods

Metalsworks

Ceramics

Household
Goods

Washi Paper/
Paper Products

Textiles/
Weaving

Woodcrafts

Glassware

Leather
Goods

Metalworks

Ceramics

Household
GoodsWashi Paper/
Paper Products

In order to take over ARITA history connected more than 400 years to next era, we try to arrange our product to fit modern life style to protect our tradition and craftsmanship. We are very happy if our products make a time to have meals enjoyable and enrichable.

We adopt an approach combining a 200-years tradition and innovative attempts to our production and transfer this value to the next generation so that we may continue disseminating Japanese modern luxury.

COMPANY

Name ARITA PORCELAIN LAB, INC.
Products porcelain
Address 3037-8 Hei Kuromuta Aritacho
 Nishimatsuura-Gun Saga
Tel +81-955-43-2221

Email info@aritaware.com
Language support Japanese, English
URL aritaporcelainlab.com
Establishment 1804
Representative Satoru Matsumoto





We make products by combining original materials not found in other companies with the traditional molding and firing methods of Arita ware. We try to make products that combine design and functionality.

Founded in 1975, the predecessor studied ceramics by himself. In addition to the conventional production of Arita ware, we researched ceramic materials and developed many original materials. Among them, the ceramic filter products that started selling in 1985 are still popular even 35 years later.

COMPANY

Name KubotaMinoruCeramicsLtd.KUEMON
Products ceramics, ceramics related products
Address 1050-1Hei Kitanokouchi Aritacho
 Nishimatsuura-Gun Saga
Tel +81-955-46-3164

Email kyuemon@bronze.ocn.ne.jp
Language support Japanese
URL www.kyuemongama.com
Establishment 1975
Representative Tsuyoshi Kubota



Textiles/
Weaving

Woodcrafts

Glassware

Leather
Goods

Metalworks

Ceramics

Household
GoodsWashi Paper/
Paper Products

KOSEN brand was born from a strong desire to spread the charm of “Nabeshima,” the production center of Nabeshimayaki since the Edo period. Nabeshimayaki has three groups by characteristics: “colored Nabeshima,” “Ainabeshima” and “Nabeshima celadon.” Our products’ utilizes these characteristics and the shape, design, technique are all modern based on the background of Nabeshimayaki.

The Kawasou family, the founder of the Kosen kiln, inherited the techniques for generations as a family of craftsmen who mainly conducted figurine and glaze research. Kosen kiln was founded in 1963. Nabeshima Kosen kiln continues the Nabeshima ware culture that has been passed down to Okawachiyama, which has been loved as a “history of the kiln” since the Edo period, for 100 years and 200 years. With the vision of “establishing Nabeshima ware culture” from the desire to preserve it, I would like to build the future Nabeshima Kosen kiln.

COMPANY

Name nabeshima kosengama
Products daily tableware of Nabeshima celadon, ornaments of colored Nabeshima, etc.
Address 1555-17 Fumaneki Minamihatacho Imari-Shi Saga
Tel +81-955-24-2137

Email info@nabeshima-kosen.jp
Language support Japanese
URL www.nabeshima-kosen.jp
Establishment 1963
Representative Torataka Kawasoe





We visits factories around Japan and combines products and technologies from other production areas to create products that make use of their delicate assembly techniques to take advantage of the characteristics of the factories. We are making things with the creator, while feeling the feeling of the people who use the production background.

In order to make use of the technology of the family assembly factory, they began to search for products that would not be possible

without delicate assembly processing, and began to focus on mobile production.

In mobiles, process analysis and jig manufacturing that have been experienced in the manufacture of home appliances and pachinko machines are condensed.

The product we finally came across was mobile.

COMPANY



Name mother tool inc.
Products mobiles (interior objects)
Address 688-5 Maruyamacho Ashikaga-Shi
 Tochigi
Tel +81-284-22-3144

Email info@mothertool.com
Language support Japanese, English
URL www.mothertool.com
Establishment 2006
Representative Miho Nakamura



Textiles/
Weaving

Woodcrafts

Glassware

Leather
Goods

Metalsworks

Ceramics

Household
Goods

Washi Paper/
Paper Products

Textiles/
Weaving

Woodcrafts

Glassware

Leather
Goods

Metalworks

Ceramics

Household
GoodsWashi Paper/
Paper Products

We have been making incense based on the concept of “Wabi,” “sabi” and “iki” that only Japanese culture has.

When I was a jewelry designer, I always worked on overseas information. I found out that there are wonderful design sources in Japan, and I started a company for incense.

COMPANY



Name YOUYOUANG Co.,Ltd
Products incense, incense plate, incense, smell bag
Address 2350-1 Kogure Fujimimachi
 Maebashi-Shi Gunma
Tel +81-27-230-5251

Email info@youyouang.com
Language support Japanese, English
URL www.youyouang.com
Establishment 1995
Representative Kanako Yoshida

YOUYOUANG



Yamamoto Farm Corporation



Konjac sponges are produced in some part of Gunma Prefecture, which is the top production area of konjac, for over 120 years. We keep the handmade quality in the factory under quality and hygiene management. We focus on safety by not using antibacterial agents and preservatives. We hope overseas women to try the “made in Japan” products born from Japanese life.

I was born in a konjac farmer and worked for a konjac company. My life has been always with konjac. I founded the company because I wanted to spread the product which utilized the characteristic of konjac to the society.

cause I wanted to spread the product which utilized the characteristic of konjac to the society.

COMPANY



Name Yamamoto Farm Corporation
Products konjac sponges, additive-free soap, cosmetics that include konjac
Address 1447 Ichinomiya Tomioka-Shi Gunma
Tel +81-274-63-4566

Email info@yamamotofarm.co.jp
Language support Japanese, English
URL www.yamamotofarm.co.jp
Establishment 1990
Representative Hiroshi Yamamoto



Textiles/
Weaving

Woodcrafts

Glassware

Leather
Goods

Metalsworks

Ceramics

Household
Goods

Washi Paper/
Paper Products

Textiles/
Weaving

Woodcrafts

Glassware

Leather
Goods

Metalworks

Ceramics

Household
Goods

Washi Paper/
Paper Products



TRINUS is an online platform that brings together unique Japanese technologies, creators, and consumers to create things that will amaze you. The hidden characteristic technologies of Japanese manufacturers will be released on the platform, and new product plans that utilize these technologies will

be recruited from creators around the world. This time, all items are reflecting Japanese technology and the ideas of creators.

There lies a diamond in the rough with hidden potential.

Assumptions and common sense may be preventing its awakening.

Let's gather ideas from outside the office, take inspiration from each other's ideas and aim for a brighter future.

At TRINUS we create an environment that fosters collaboration, enabling the realisation of wonderful possibilities.

Birthing ideas which make the world exclaim "WOW!"

COMPANY



Name TRINUS, Inc.
Products stationery, flower vase, plates, bag, etc.
Address 2F Tefu Yoyogi Uehara 3-1-10 Nishihara
 Shibuya-Ku Tokyo
Tel +81-3-5244-5796

Email info@trinus.jp
Language support Japanese, English
URL trinus.jp
Establishment 2014
Representative Shinya Sato



095 **KITCHIBE Co., Ltd.**



All fragrances are made by the Japanese fragrance and flavor ingredients company, Shiono Koryo, with a history of over 200 years. The handmade ceramic diffuser is made by a collaboration with HOUSEN-GAMA, a traditional Mino ceramics producer, and Qurz Inc., a company founded by the designer Takumi Shimamura. KITCHIBE believes its fragrance touches people from all over the world.

The brand “KITCHIBE” was founded by Shiono Koryo in 2016 to expand the value, sense, and creativity of Japanese fragrance culture to the world. It was a mission to let people know widely and globally about the Japanese craftsmanship, an organic, delicate, yet comfort design, and the value of a fusion between tradition and innovation through “scents.” As a result, we developed new style of home fragrance collection by sticking to make all items in Japan and started our challenge to throw a lot of locally developed ideas and insights to this globalized world.

COMPANY



Name KITCHIBE Co., Ltd.
Products fragrance diffuser (likestone diffuser),
 fragrance candle (crinkle candle),
 fragrance oil
Address 19 Kandakonyacho Chiyoda-Ku Tokyo
Tel +81-3-3252-4427

Email sales@kitchibe.com
Language support Japanese, English, Chinese
URL www.kitchibe.com
Establishment 2016
Representative Taichi Shiono

KITCHIBE<



Textiles/
Weaving

Woodcrafts

Glassware

Leather
Goods

Metalsworks

Ceramics

Household
Goods

Washi Paper/
Paper Products



We made FUJIGOKE applying freeze-dry processing technology to the beautiful moss produced at the foot of Mt. Fuji. We are aiming to distribute it globally as the unique products originated in Japan. We developed Karesansui kit as an example of use of FUJIGOKE. We hope customers will understand traditional Japanese garden style and Karesansui together with the beautiful moss of Japan.

As I engaged in flower arrangement, I thought as a user that coating liquid would be useful in order to overcome the fragility of preserved flower. Therefore, I started the developing a water soluble flower coating liquid "Garde". It was a success and I began to promote it to many people engaged in floral business. I also started developing "Frozen Flower" (freeze dried flowers). As the beauty of them became praised by world-famous European flower artists, I aimed to distribute fine products globally. In Sep, 2015, I exhibited Frozen flower and "Garde" at the Mason & Objet Paris. Now FUJIGOKE is on trial sale in Paris.

COMPANY

Name Floral kobo katsura Inc.
Products Fujigoke (freeze fried moss), frozen flower (freeze dried flower), garde (flower coating liquid)
Address 3-31-33 Minamiyamata Tsuduki-Ku Yokohama-Shi Kanagawa
Tel +81-45-591-1782

Email info@f-katsura.com
Language support Japanese, English, Chinese
URL www.f-katsura.com
Establishment 2011
Representative Katsura Ito





We are not only producing resin molded products alone, but we have sent out many final products that combine the metal processing technology of ceramics and Tsubame-sanjo, which is a world-renowned “metal object town.” We will continue to take on challenges in order to find the best combination that can meet your needs from the many possibilities.

We think that the idea of “I wish there was such a product” is the starting point of creating things, and we will continue to challenge to make “I wish there” a form of helping people to enjoy and enrich their lives.

COMPANY

Name KAWASAKI PLASTIC CO.,LTD.
Products coffee mill, spice mill
Address 401-17 Shimohonai Sanjo-Shi Niigata
Tel +81-256-38-2531

Email otoiawase@kawasaki-plastics.jp
Language support Japanese
URL www.kawasaki-plastics.jp
Establishment 1951
Representative Yusuke Kawasaki



Marumi Yasuda Kawara Kogyo Corporation

Textiles/
Weaving

Woodcrafts

Glassware

Leather
Goods

Metalworks

Ceramics

Household
GoodsWashi Paper/
Paper Products

To keep the traditional Kawara culture, our project aims to contribute for the region by creating opportunities to spread the attractiveness of Kawara, such as beauty and Japanese atmosphere, by making them not only for “Dwelling” but also “Eating.” TSUKI is a brand that was completed after repeated trial production and minute calculations such as degree of shrinkage or blending ratio of glaze to form wrinkles.

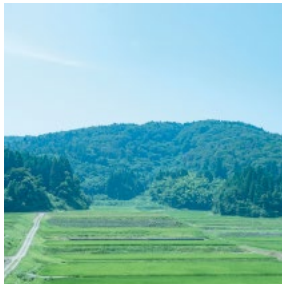
Yasuda Kawara has been handed down as a family business since Tenpo era (1830 - 1844) of Edo period. Because Kawaras of other prefectures extended to the area of Niigata with the times, in order not to be beaten by others, three Kawara makers having family relationship gathered together to establish Marumi Kawara Kougyou Corporation to increase the production of Yasuda Kawara and started its business in 1980. By making tunnel kilns to cope with the mass-production, we established a system to keep the tradition and culture of “Yasuda Kawara” that was born and raised in Niigata.

COMPANY



Name	Marumi Yasuda Kawara Kogyo Corporation	Email	marumi@amber.plala.or.jp
Products	roofing tiles	Language support	Japanese
Address	6130-1 Yasuda Agano-Shi Niigata	URL	marumikawara.com
Tel	+81-250-68-3802	Establishment	1980
		Representative	Kazuto Endo





Since established in 1892, we have been buying the ingredients for warousoku making from the same place in Japan. For example, washi paper and dried rush, the ingredients of the wick, come from Shimane and Nara and haze wax (sumac wax), one of the oldest wax in the history of warousoku, comes from Kyushu region.

We value to work locally and stay eco-friendly. In 2016, we succeeded in making candles only from urushi wax harvested in Wajima, a small town in the Noto Peninsula. Be-

cause only 1% of urushi is home growth, we wanted to contribute to urushi farmers in Wajima in some way. By buying the fruits of Wajima urushi tree and making the candles, we contribute to protect the urushi industry. We use timber from the Noto Peninsula as a fuel for kilns which melt the wax.

The legend has it that the first warousoku appeared in the 14th century. In the Edo period, Nanao flourished as a natural harbour and the northern bound ships called Kitamaebune calls at Nanao. Because warousoku was one of the good financial resources and all ingredients for making were brought by Kitamaebune, some guilds were established to start making warousoku. By the time of the Meiji period, the government dissolved every kind of guilds including and the number of warousoku makers decreased. Asajiro TAKAZAWA, the 1st generation of our company started a small warousoku shop to keep the tradition.

COMPANY

Name TAKAZAWA Candle Co., Ltd.
Products candles (traditional Japanese candles)
Address 3-2 Naginoura Nanao-Shi Ishikawa
Tel +81-767-53-0552

Email tamaki@takazawa.jp
Language support Japanese, English
URL takazawacandle.com
Establishment 1892
Representative Hisashi Takazawa



Textiles/
Weaving

Woodcrafts

Glassware

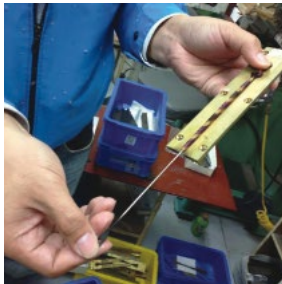
Leather
Goods

Metalworks

Ceramics

Household
Goods

Washi Paper/
Paper Products



Our company was founded in March 1995 under the company name of “Yoshisou,” but it was quickly unified into “KISSO Kisso” with the goal of becoming a world company. Since 2010, after launching the original accessory brand “Dirocca Di Rocca,” we have unified the brand name to “KISSO” and have been developing ladies’ accessories, and started to move toward the development of the eyeglass industry and the revitalization of the local industry.

Kisso Co., Ltd. was born in 1995 as a material trading company for glasses in Sabae City, Fukui Prefecture. Kisso’s founder, Matsukawa Yoshikawa, was born and raised in the Kawawada district, where craftsmen gather in Sabae, the city of glasses. In anticipation that the glasses made of titanium, which were considered to be difficult to process at the time, will be manufactured in Sabae in earnest, the material supply system was quickly established. From the deep feeling for glasses that have coexisted with glasses, we are also making efforts to create products that change the form from glasses.

COMPANY

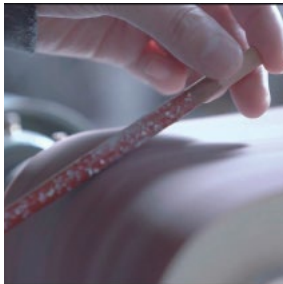


Name KISSO CO.,LTD.
Products wholesale sales of cellulose acetate manufacture and sales of accessory brand "KISSO" manufacture and sales of sabae series
Address 4-305-2 Maruyama Sabae-Shi Fukui
Tel +81-778-54-0355

Email kisso@kisso.co.jp
Language support Japanese
URL omiyaichi.com
Establishment 1995
Representative Seiichi Yoshikawa

KISSO





STYLE OF JAPAN offers the contemporary japanning chopsticks and tableware, standing on its 400-year tradition of production town history. We present the essence of traditional JAPAN's sense of beauty and innovative techniques with appropriately adopted ethical material, functional utility and elegant design.

The vision of STYLE OF JAPAN is "Telling story of HASHI based on its 400 year histories to the world." We are now on the way and shall contribute the realization for Low Carbon Society

through our unique and eco-friendly product line ups.

STYLE OF JAPAN started business in New York in 2003 to introduce the "HASHI" culture of Japan into the US, with the 4th generation pride of traditional family business "HASHI," which is the formal way to pronounce in Japanese language, we have the dream some day people in the world call same way not chopsticks like people call "MANGA."

COMPANY



Name STYLE OF JAPAN, INC.
Products Wakasanuri-chopsticks and wooden tableware: OEDO, fufu, HASHI by STYLE OF JAPAN, STYLE OF JAPAN DINING
Address 3F Nbuilding 7-4 Otecho Obama-Shi Fukui
Tel +81-770-52-1835

Email pr@styleofjapan.net
Language support Japanese, English
URL www.soj-inc.jp
Establishment 2003
Representative Kazuo Omori

Textiles/
Weaving

Woodcrafts

Glassware

Leather
Goods

Metalworks

Ceramics

Household
GoodsWashi Paper/
Paper Products

Textiles/
Weaving

Woodcrafts

Glassware

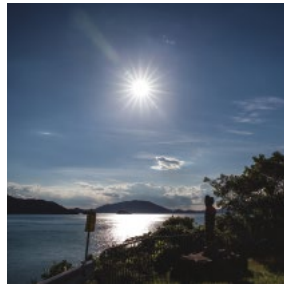
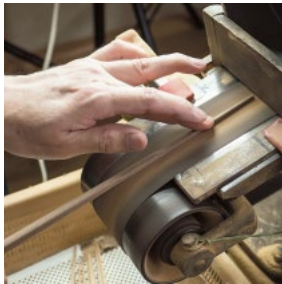
Leather
Goods

Metalworks

Ceramics

Household
Goods

Washi Paper/
Paper Products



We follow tradition, and at the same time we always try to meet modern society's need, modern designed chopsticks which would fit any kinds of cuisine, chopsticks which is dish-washer safe, chopsticks for kids or elderly people, chopsticks made from environmental friendly materials and more.

We apply modern technologies to generate new design for chopsticks silk screen printing, laser cutting, inkjet printing. Explore new textile patterns and translate into chopsticks design.

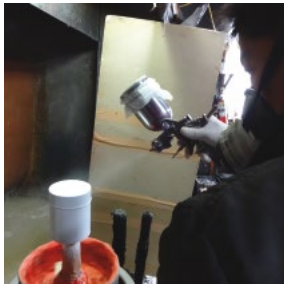
COMPANY



Name Kawai Co., Ltd.
Products chopsticks
Address 16-2 Kitashioya Obama-Shi Fukui
Tel +81-770-53-2465

Email info@kawai-ohashi.co.jp
Language support Japanese, English, Chinese
URL www.kawai-ohashi.co.jp
Establishment 1943
Representative Koichi Kawai





MOHEIM, interior product brand, launched from Fukui in 2014. In pursuit of minimal beauty, we create simple and timeless items start with a dust box named SWING BIN, which has won the domestic and international Design Awards.

Not only for home use, but also for residences, hotels, offices, and various other scenes, we value a quiet presence that stands out, beautiful colors and easy-to-use functionality.

Our company was founded in 1987 and started near Sabae, which is famous for producing glasses. At that time, we were mainly manufacturing displays for glasses, but since the products made in China have the largest market share, we also started to handle displays for cosmetics and electronics retailers. With more than 30 years of experience in manufacturing, we met various partner companies, and this network has become the property of our company. Taking advantage of this network, we launched the MOHEIM brand.

COMPANY



Name Plastics Co., Ltd.
Products display fixtures related to sales promotion
Address 81-1-40 Nagocho Fukui-Shi Fukui
Tel +81-120-291-550

Email info@moheim.com
Language support Japanese, English
URL moheim.com
Establishment 1987
Representative Shigehiro Osawa



Textiles/
Weaving

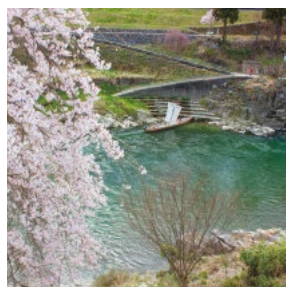
Woodcrafts

Glassware

Leather
Goods

Metalworks

Ceramics

Household
GoodsWashi Paper/
Paper Products

The atelier of RITUAL is located at Iida city in Nagano prefecture where known as the industry of Mizuhiki strings. “Iida Mizuhiki” is shipped throughout Japan. Since the ancient ages, Japanese has used Mizuhiki strings for important festivals and ceremonies. One string becomes one surface. The surface finally forms the shape, which is the moment of becoming “Mizuhiki Arts.”

The history of Mizuhiki strings has been back to around the year 600. The ancient Japanese brought back gifts wrapped with

strings from Eurasia continent. They perceived those strings as decorations showing a spirit of respect. That is told as the beginning of Mizuhiki. Since then, Japanese has inherited the culture of it to nowadays with entrusting their spirituality to a single string, even though the style has changed over time. We made a new story of “Mizuhiki” with a sense of the present days while deeply appreciating those long history as well as their traditional creativity and spirituality.

COMPANY

Name RITUAL the crafts
Products contemporary Mizuhiki art, objects, jewelry
Address 276 Kamitonooka Iida-Shi Nagano
Tel +81-70-6971-8544

Email ritual@e-mail.jp
Language support Japanese
URL www.ritual-dolmen.com
Establishment 2016
Representative Shingo Nakata

RITUAL
the crafts



Nagano



Magnesium has the unique feature of being the lightest in practical metals, but its utilizing range was limited due to its difficulties. Japan needs to break through the limits of magnesium and expand its potential using her technological power. We apply the skills of craftsmen to try to spread the charm of magnesium by producing familiar products with it.

When the company was founded in 2010, it was given an unusual name, MACRW. Magnesium Alloy Cold Rolling Works is an acronym for MACRW. The company's business domain is to use magnesium alloy as a material and take on the challenge of cold working, which was not common for magnesium. In fact, this company name has another meaning. There is a way to win, "the last turn of foot" in horse racing. It is a way of winning that runs from the back in the last straight line. We dreamed that the material magnesium and what we aim for would take a long time, but would spread all at once and change the world.

COMPANY



Name MACRW Co., Ltd.
Products magnesium alloy welfare equipment, furniture, acoustic goods, parts and materials
Address 286-1 Yamamoto Fujinomiya-Shi Shizuoka
Tel +81-544-24-5900

Email n_abe@macrw.xsrv.jp
Language support Japanese, English
URL macrw.com
Establishment 2010
Representative Masahito Abe



Textiles/
Weaving

Woodcrafts

Glassware

Leather
Goods

Metalsworks

Ceramics

Household
Goods

Washi Paper/
Paper Products

Tokai Slowtoy club

Textiles/
Weaving

Woodcrafts

Glassware

Leather
Goods

Metalworks

Ceramics

Household
GoodsWashi Paper/
Paper Products

Our mission is to contribute to the development and sale of products with materials made in Tokai, considering the regional revitalization and lifestyle. The product development concept is “slowly but fun, healthy, and safe.” It is the exact opposite of the times when efficiency is required, but “Kids having fun,” “Save their healthy growth,” “Social” and “Upgraded safety” is Slowtoy’s concept.

Our vision is to create a society in which all children can grow up healthy. It must have a design which is cute and does not leave any children behind. However, just its design is not enough. We focus on local production for local consumption of products such as slow food, un-digital products such as slow life, environmentally friendly products, and ethical consumption, etc. Slowtoy will be a measure for our society where people can live in Tokai region with just the amount of need.

COMPANY

Name Tokai Slowtoy club
Products chemical and kids products
Address 1-116-1 #303 Horagai Midoriku
 Nagoya-Shi Aichi
Tel +81-52-878-8303

Email mitsu@slow-toy.com
Language support Japanese, English, Spanish
URL slow-toy.com
Establishment 2015
Representative Mitsuo Akita



Aichi



This tissue case is meticulously designed to fit into your cupholders in vehicle. This thin thickness barrels became available because of the great skillsets along with its bright color variation. We kept its simplicity as the tissue case rather than focusing too much on the automotive interior. You can easily hands it to the others by one hand with no hesitation with its beautiful Cedar texture.

Kiwakoto is highly revolved around craftsmanship. We do product development, production and sales of the luxury products. We

partnered with the traditional renown Kyoto craftsmen to enrich your modern lifestyle with their highly valued unique art directions while maintaining its product functionality. We are creating the next trend with our unique perspective and adopting to transform into our beloved products worldwide. Our young team members in 20s and 30s comes from the diversity of the background. They joined Kiwakoto because of their strong passion in “Japanese tradition,” and their desire to get involve in the product development with these traditional craftsmen. We deliver these significant traditional values to the next generation in form of the luxury modern lifestyle.

COMPANY

Name A-STORY Inc.
Products smart tissue case (traditional handcraft)
Address 40-3 Kotobukicho Saiin Ukyo-Ku Kyoto
Tel +81-75-874-3820

Email info@kiwakoto.com
Language support Japanese, English, Chinese, Spanish
URL www.kiwakoto.com
Establishment 2018
Representative Kazuaki Matsushima





HORIUCHI MIRROR was established at Hirano-ku in Osaka City, which is the only one major area of producing mirrors in Japan. We have been developing and producing mirrors of unisex and ageless design in order to “provide appropriate tools to the people caring for their appearance”. We expect that the mirrors produced by HORIUCHI MIRROR will provide a chance to find your new phase.

The colors of images reflected by ordinary mirrors may be different from the real colors. For eliminating such color change, the founder of HORIUCHI MIRROR focused on finding a glass with higher transparency and making light-reflecting aluminum film through repeated trial and error. And finally completed the patented “Napure Mirror” which reflects images with pure and natural colors without influence by the color of glasses. The “Napure Mirror” drastically decreases mistakes in makeup with conventional mirrors. The mirror developed by our founder has been contributing to improved makeup of Japanese women.

COMPANY

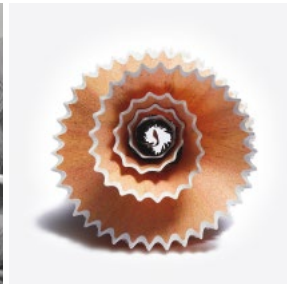
Name Horiuchi Mirror Industry Co.,Ltd.
Products compact mirrors hand mirrors stand mirrors
Address 1-5-11 Nishiwaki Hirano-Ku Osaka-Shi Osaka
Tel +81-6-6702-1987

Email horiuchi@cr-horiuchi.co.jp
Language support Japanese
URL www.horiuchimirror.jp
Establishment 1955
Representative Shigemi Horinouchi



Osaka

NAKAJIMA JUKYUDO.,LTD.



Founded in 1933, Nakajima Jukyudo Co., Ltd. is the only manufacturer in Japan specialized in pencil sharpener. For over 80 years in Osaka, we have consistently manufactured pencil sharpener blades, bodies and sets at our own factory. In order to convey Japanese spirit “Mottainai,” taking good care of goods, we continue spreading Pencil Flake Art, about space and things as stationery brand.

NJK’s brand identity is that
MISSION: Stationery brand to contribute to culture creation through pencil sharpeners.

OUR VALUES: We value the “MOTTAINAI spirit,” “creative ingenuity,” and “communication of our Heart.”

VISION: We are going to continue fulfilling the mission of being a true culture-creating.

In order to realize a sustainable society, we want to communicate to the world through our products.

COMPANY



Name NAKAJIMA JUKYUDO.,LTD.
Products stationaly and cosmetic pencil sharpener
Address 7-3-28 Miyakenaka Matsubara-Shi Osaka
Tel +81-72-339-5599

Email info@njc-brand.co.jp
Language support Japanese, English
URL www.njk-brand.co.jp
Establishment 1933
Representative Junya Nakajima

NJK



Textiles/
Weaving

Woodcrafts

Glassware

Leather
Goods

Metalworks

Ceramics

Household
Goods

Washi Paper/
Paper Products



Osaka is famous for manufacturing and top manufacturing area for toothbrush as well. We manufacture MISOKA toothbrush and all of them are finished by artisans manual work through many checking points. We have clinical result that MISOKA helps remineralizing the teeth better than the high concentration fluorine. MISOKA provide advanced mineral coating technology to live healthy life.

Mr. Yohei Tsuji started YUMESHOKUNIN CO., LTD in 2007.

MISOKA has been sold more than 4 million toothbrushes in Asia and around the world. He developed mineral coating technology to reserve safe and effective mineral for 30 days. After developing his products, he had difficult time to sell them. People did not understand high function toothbrush but he never gave up to explain one by one. Then, it started to get good feedbacks and people repeated to use MISOKA. Even today, Mr. Tsuji still has passion to create products to do hand finish by artisans.

COMPANY

Name YUMESHOKUNIN CO., LTD.
Products mineral coating technology
Address 3-14-13 Hanjo Minoh-Shi Osaka
Tel +81-72-720-7703

Email sales@misoka.biz
Language support Japanese, English
URL global.misoka.jp
Establishment 2007
Representative Yohei Tsuji

MISOKA



Osaka

Hiroshima Artist Brush Manufacturing Co., Ltd.



Kumanofude use natural hairs which were selected from different kinds of high-quality hairs so you can decide what matches with your skin. Natural hair has cuticles on its surface so it can hold more makeup. Our animal hair is obtained from established hair-trading companies which fulfill environmental criteria. We never cut off the brush tip so it could hold so much makeup and feel so comfortable.

Mr. Yasubei Shiromoto started fude-making in Kumano Town in 1869. Mr. Joichi Shiromoto I (First) received the license from Office of Hiroshima Prefecture first in Kumano Town in January 1881. Mr. Joichi Shiromoto II (Second) worked with the other manufacturers in the Town to establish Kumanofude Cooperative (AKA "Fude Kumiai") in order to achieve manufacturers' and craftsmen's technological improvement in 1947. He was appointed as First Chairman of Fude Kumiai. We promise and respect prosperity of Kumano Town and the company.

COMPANY



Name Hiroshima Artist Brush Manufacturing Co., Ltd.
Products brushes for calligraphy, painting, and makeup
Address 4-7-24 Nakamizo Kumanocho Aki-Gun Hiroshima
Tel +81-82-854-1145

Email shiromoto@artbrush-hiroshima.com
Language support Japanese, English
URL www.artbrush-hiroshima.com
Establishment 1869
Representative Kenji Shiromoto



Textiles/
Weaving

Woodcrafts

Glassware

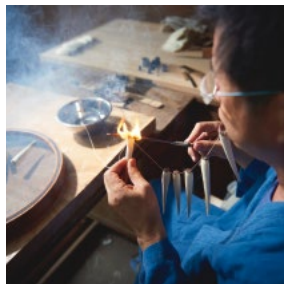
Leather
Goods

Metalworks

Ceramics

Household
Goods

Washi Paper/
Paper Products



Kawajiri *Fude* is one of four major brands of traditional calligraphy brush in Japan. Typically, several craftspeople took part in the making of a *fude* (calligraphy brush). On the other hand, since the Edo Period, *fude* artisans in Kawajiri have involved themselves in an entire *fude*-making process, and this is why Kawajiri *Fude* has been known for its excellent quality and perfection.

Among many brush-makers in Kawajiri, Hata Bunshindou makes brushes to the strict orders from famous calligraphers all over Ja-

pan and is considered one of Japan's best *fude* producers. They have received many awards, including an honourable recognition from the royal family of Japan. What makes them stand out is the raw material which is extremely rare and of highest quality, as well as sophisticated skills inherited from fathers to sons over several generations that breathe life into each *fude*. More than seventy steps are involved in the creation of a *fude*. It takes more than ten years to master all of them and only a chosen few will be recognized as a first-rate artisan.

The craftpersonship of Hata Bunshindou has been strictly inherited in the family to Yoshiyuki Hata who is the third-generation master, the representative of Hata Bunshindou and an authorized Japanese traditional craftsperson, and Koso Hata, his son and the fourth master, who never stop perfecting it.

Bunshindou's *fude* has been admired by various calligraphers inside and outside Japan. A French artist who has long established himself in the art society in Paris gives a lavish praise, saying that the sensation of life being breathed into lines through every stroke gives him a joy he has never experienced before. If you think you know the genuine one, this *fude* is for you.

COMPANY



Name Hata Bunshindou
Products calligraphy brushes, make-up brushes, baby brushes
Address 1-5-35 Harayama Kawajiricho Kure-Shi Hiroshima
Tel +81-823-87-2154

Email info@bunshindou.com
Language support Japanese, English
URL bunshindou.com
Establishment 1930
Representative Yoshiyuki Hata
 METI*-designated traditional craftsperson of Kawajiri *fude* (brush)





Igusa is planted by a skilled crafts man in December and it is harvested in July. After that they weave carefully. Our Igusa is special unlike usual, and it is made without mud dyeing for smell and the touch.

IKEHIKO was founded in 1886 as a wholesaler of Tatami mats. The company is currently engaged in the manufacture of furnishings and fabrics for homes and offices across Japan. IKEHIKO is now aiming to expand into overseas markets.

COMPANY

Name IKEHIKO CORPORATION Co.,Ltd.
Products products made of Igusa and fabric
Address 1052 Miyamatsu Ohkimachi
 Mizuma-Gun Fukuoka
Tel +81-944-32-1203

Email inquiry@ikehiko.co.jp
Language support Japanese, English
URL ikehiko.com
Establishment 1886
Representative Kosei Inokuchi



Fukuoka



Textiles/
Weaving

Woodcrafts

Glassware

Leather
Goods

Metalsworks

Ceramics

Household
Goods

Washi Paper/
Paper Products

Textiles/
Weaving

Woodcrafts

Glassware

Leather
Goods

Metalworks

Ceramics

Household
Goods

Washi Paper/
Paper Products



I want people all over the world to know the meaning of a lucky charm behind Takasaki Daruma.

Toyoka Town of Takasaki City, Gunma Prefecture, is a No.1 producer of Daruma in Japan. Imai Daruma NAYA has a history of over 80 years. Hirohisa Imai, CEO and Chief Craftsman at Imai Daruma NAYA, is passionate to create new and modern styles of Daruma while preserving and protecting the traditional style of Daruma. There are both traditional and modern elements behind all products of the Designer's Series, and they have received many positive feedbacks in Japan and abroad. Hirohisa is determined to

pass down the traditional Daruma-making techniques and artistry to the future generations.

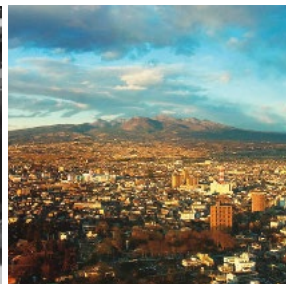
COMPANY



Name Imai Daruma NAYA Co.,Ltd
Products Daruma
Address Kamitoyookamachi Takasaki-Shi Gunma
Tel +81-27-323-5145

Email shop@imai.shop-pro.jp
Language support Japanese
URL imainaya.com
Establishment 1930
Representative Hirohisa Imai





Not only the beauty of Daruma's color and shape, I also aim to create a beauty that blends into everyday life. By keeping the manufacturing method of Daruma, we carefully designing one by one, hand making to suit the modern lifestyle. In Takasaki City, Gunma Prefecture, a strong dry wind called "Karakaze" makes the area suitable for making Daruma, so daruma making has continued for over 200 years.

Daruma is a traditional culture in Japan. Most of the current Daruma shop have been continuing for generations. Even in the same Daruma shop, the beards and characteristics of Daruma are different one by one. I was fascinated by such a thing and the more I studied, the deeper it became, and I began to think that it would be possible for people to make their own darumas to make their wishes and feelings, and also make them smile. While keeping the traditional Daruma manufacturing method, we are working on "new" "aha" "beautiful" in mind.

COMPANY

Name darumaya-saku
Products Daruma
Address 268-6 Kibimachi Takasaki-Shi Gunma
Tel +81-27-395-5640

Email k.kobayashi@darumaya-saku.jp
Language support Japanese
URL www.darumaya-saku.jp
Establishment 2017
Representative Kazuhisa Kobayashi



Textiles/
Weaving

Woodcrafts

Glassware

Leather
Goods

Metalworks

Ceramics

Household
Goods

Washi Paper/
Paper Products



Time of peace that is lost in everyday life. I want to make a papier-mache doll that creates a relaxing time in such a busy life. Traditional customs and nostalgia, that might be forgotten. We continue to make products called “folk craft.”

Takasaki Daruma, which has a history of more than three hundred years, has two elements: “Lucky Items” and “Folk Crafts.” We develop these two elements, and design originally lucky charms and papier-mache dolls which can respond to the diverse

wishes of everyone, as folk crafts with a warm feeling. We are committed to hand-made, and we are making it with all our heart.

COMPANY



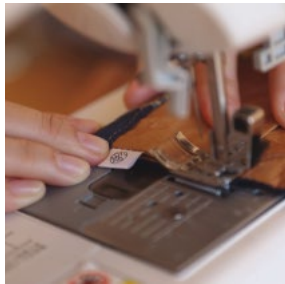
Name Ichino Co., Ltd.
Products paper mache
Address 3 Shimotoyookamachi Takasaki-Shi
 Gunma
Tel +81-27-323-5222

Email info@ichino.co.jp
Language support Japanese, English
URL www.ichino.co.jp
Establishment 1989
Representative Tamotsu Nakata



① 444-1-444





The rice bag used at the rice shop, persimmon tannin was common in the past, the edge part of a tatami mat that decorated living space... Japan had such wisdom and it is a waste not to use it. Let's create new value by combining wisdom and materials used in Japanese life! We are working to create such products that bring smile to people.

We gave it the name "Nochihodo" based on the idea that you will enjoy the charm of its material while using our product, as like as you say "see you later." We change the rice bag that always brings

you the rice that you eat every day into a commonplace accessory familiar to your everyday life. Our wish is giving color to your life-style.

Textiles/
Weaving

Woodcrafts

Glassware

Leather
Goods

Metalsworks

Ceramics

Household
Goods

Washi Paper/
Paper Products

COMPANY



Name tadanoyamamoto
Products the rice bag multi card case, the rice bag pen case, pouch
Address Sankohaitsu203 2-520-2 Owadacho Minuma-Ku Saitama-Shi Saitama
Tel +81-80-3704-9094

Email info@nochihodo.jp
Language support Japanese
URL nochihodo.jp
Establishment 2017
Representative Natsuko Tada





Our company mainly manufacture Japanese culture festival dolls, by using a technique called wood grain. Recently, demands for festival dolls has been sluggish so we have been manufacturing lucky cats and trays that can be used everyday to enable people to touch the Edo-Kimemeguro doll, a nationally designated craft. We hope that our dolls and fabrics will make you feel closer to Japan.

We want you to know and want to spread the Edo Kimekomi doll to the world.

The doll itself is made of clay, so you can make it freely. By using various fabrics, it is possible to express various expressions and moods from one mold. We are trying to create unique products with unique designs and colors.

COMPANY

Name Kakinuma Ningyo Co.,Ltd
Products festival dolls
Address 1-2-9 Shinkoshigaya Koshigaya-Shi
 Saitama
Tel +81-48-964-7877

Email info@kakinuma-ningyo.com
Language support Japanese, English
URL www.kakinuma-ningyo.com
Establishment 1950
Representative Tomonori Kakinuma

株式会社
 木村光太郎



Saitama



We are a “happy design” gifts manufacturer based in Tokyo. We plan and design our own products centered on stationery and produce them by cooperating with Japanese factories using eco-friendly materials. Our products are made of fiber paper, very tough like plastics but biodegradable. We made our first fiber paper stationery “Clip Family” in 2015 after more than a year of joint research with a factory in Saitama prefecture.

Designer, Yu SUGAI is working for his strong idea “provide imagination and dreams to the world.” Its history began with a fun sticky note called Mustache-it, a mustache-shaped sticky note. People in Japan work long hours in small spaces. Through our products, we hope to make their workday happier and more productive. We want to bring this same concept to the rest of the globe, too. Our mission is to “provide imagination and dreams to the world.” We believe communicating with each other through our products will leads to a more peaceful world.

COMPANY



Name SUGAI WORLD, Inc.
Products stationery
Address 2-12-4-202 Yoga Setagaya-Ku Tokyo
Tel +81-3-5716-1963

Email miyu@sugai-world.com
Language support Japanese, English, French
URL sugaiworld.com
Establishment 2011
Representative Yu Sugai

SUGAI WORLD
 Happy Design Gift Maker



Textiles/
Weaving

Woodcrafts

Glassware

Leather
Goods

Metalsworks

Ceramics

Household
Goods

Washi Paper/
Paper Products

Textiles/
Weaving

Woodcrafts

Glassware

Leather
Goods

Metalworks

Ceramics

Household
GoodsWashi Paper/
Paper Products

We worked on this project together with Takezasado, a woodblock printer. We would like to convey the fun of using the technique of woodblock printing, which has been handed down in Japan since ancient times to develop a variety of items from a single sheet of paper. All items are made in Kyoto. We would like to send out new proposals to the world under the theme of kawaii and traditional crafts.

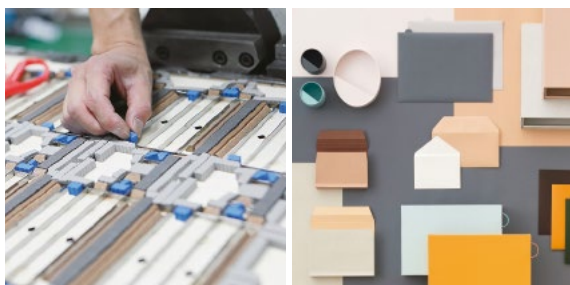
Happy from you. The words are meant to “make you and your loved ones happy.” We do manufacturing cherishing the feeling that makes you want to give a gift or being excited. At AIUEO, there are certain things that we value in our manufacturing. Make it honestly. With the intention of giving it as a gift. A discovery. And fun and light. We always keep these four keywords in our mind while we produce accessories. AIUEO’s miscellaneous goods make you feel new and I’m happy to see your imagination expand or get excited about it.

COMPANY

Name AIUEO
Products stationery, albums, books, Nigaoe
Address 74 Iwakuraminamihiraokacho Sakyo-Ku
 Kyoto
Tel +81-75-707-1168

Email aiueo@hello-iroha.com
Language support Japanese
URL hello-aiueo.com
Establishment 2003
Representative Yukinobu kimura

いろは出版
IROHA PUBLISHING



Our company is headquartered in Osaka, the only region in Japan where paper utensils are registered as a regional industrial resource. We would like to propose a new daily necessity, “Shiki-gu” that makes full use of “paper containers and paper processing.”

We believe that “Shiki-gu” is a world developed by the advanced and delicate techniques and ingenuity of Japanese craftsmen. It is an industrial technology of the highest standard and takes into account various processing tech-

niques such as paper manufacturing and printing. We are developing products that offer a new way of paper in a sustainable era.

Paper container technology has been developed as a build-to-order industry, such as punching cardboard with a die, processing to make a structure by bending paper, and processing to make multiple sheets of paper stronger. These technologies are industrial technologies which have been developed by division of labor. Many companies are involved and various technologies are utilized. Our company possessed processing technologies, know-how, and a broad regional network cultivated over the past 100 years. We would suggest the society how the use and value of paper will change in the future.

COMPANY

Name TAISEI Co., Ltd.
Products printing, paper containers and processed paper products, paper stationery and daily necessities in the application
Address 13F 2-3-2 Minamisenba Chuo-Ku
 Osaka-Shi Osaka
Tel +81-6-6210-5193

Email info@taisei-shiki.jp
Language support Japanese
URL www.taisei-shiki.jp
Establishment 1919
Representative Yuichiro Hosomizu



大成紙器製作所



Osaka

Kinki

	Mie G.M.P. Inc.		Kyoto Tsunai Co., Ltd.		Osaka NAKAJIMA JUKYUDO.LTD.
	Shiga WESTY INDUSTRIES CO.,LTD.		Kyoto TOHGORO Co., Ltd.		Osaka YUMESHOKUNIN CO., LTD.
	Kyoto Kojima Textile Co., Ltd.		Kyoto A-STORY Inc.		Osaka TAISEI Co., Ltd.
	Kyoto DAITOU SHINGU KOGYO Co.,Ltd.		Kyoto AIUEO		Hyogo Paulownia Products
	Kyoto im		Osaka Engi no Ito		Nara BAN INOUE Ltd.
	Kyoto Nanjo Kobo Co.,Ltd.		Osaka FUKUROYA TOWEL & co.,LTD.		Wakayama Paulownia furniture AZUMA Co.,Ltd.
	Kyoto Shinroku Co.,Ltd.		Osaka Horichi Mirror Industry Co.,Ltd.		Wakayama KISHU Plus LLP

Kanto

	Tochigi mother tool inc.		Gunma Ichino Co., Ltd.		Tokyo Surprise Creative.Ltd.
	Gunma Usaburo Inakishi Co.,LTD.		Saitama Masuhino uniform co.,Ltd.		Tokyo chikusen Co., Ltd.
	Gunma Yoshizawa Wood & Lacquer Works		Saitama Sekine Paulownia Products		Tokyo MARUMASU DYEING Co.,Ltd.
	Gunma YUUYOUANG Co.,Ltd.		Saitama Toyota Sculpture Studio Co., Ltd.		Tokyo Hirota Glass Co.,Ltd.
	Gunma Yamamoto Farm Corporation		Saitama Y.S.M Co.,Ltd.		Tokyo Tsuchiya Kaban CO., LTD.
	Gunma Imai Daruma NAYA Co.,Ltd.		Saitama tadanoyamamoto		Tokyo STUDIO BYCOLOR
	Gunma darumaya-saku		Saitama Kakiuma Ningyo Co.,Ltd.		Tokyo ANCHOR Co.,Ltd.

Hokkaido

	Hokkaido Sasaki Kogi Co., Ltd.
	Hokkaido Takizawaencer Co.,Ltd.
	Hokkaido Kenji Usuda

Tohoku

	Aomori Kimura Woodcraft Factory Ltd.		Fukushima Saiji Oritomo Co., Ltd.
	Iwate Iwate Iron Co.,Ltd.		Fukushima 38works,Inc.
	Akita TOMIOKA SHOTEN CO., LTD.		Fukushima ashi kensou corporation
	Yamagata Narushimayaki Wakiigama		Fukushima Asakano-gama

Chugoku

	Okayama TAKEYARI Co.,Ltd.		Okayama narutaki
	Okayama WHOVAL Co.,Ltd.		Hiroshima YOSUI
	Okayama SEISHOKU CO.,LTD.		Hiroshima Hiroshima Artist Brush Manufacturing Co., Ltd.
	Okayama KAMADA KOGEISHA Co.,Ltd.		Hiroshima Hata Bunshindou

Kyushu

	Fukuoka IKEHIKO CORPORATION Co.,Ltd.		Saga Kinshodo Co., Ltd.
	Saga Yoshijimashinichi sashimadansu Co., Ltd.		Saga Kouraku Kiln Inc.
	Saga Soejima Glasware Co.,Ltd.		Saga ARTA PORCELAIN LAB. INC.
	Saga Inarishokai Co., Ltd.		Saga KubotaMinoru CeramicsLtd. KUEMON
	Saga Yamahci Kamamoto Corporation		Saga nabeshima koisengama
	Saga DAIKEI Co., Ltd.		Miyazaki HinamoriMeiboku Co.,Ltd.
	Saga SHIMABUN Co.,Ltd.		

Okinawa

	Okinawa Glass Works Tyuki
--	-------------------------------------

Shikoku

	Tokushima Dairi Lumber Co.,Ltd.
	Kagawa Morimoto Tategu Ten Ltd.
	Ehime UNITED SILK Co., Ltd.

Chubu

	Niigata ASANO MOKKOUSHO. co.,LTD.		Niigata MARUNAO CO.,LTD.		Niigata Yamatani Industry Co.,Ltd.		Niigata ARTISAN.LLC		Niigata Susuda Blacksmith Works, Inc.		Toyama Shimatani Spouryuu- Koubou Inc.		Ishikawa Kanamoto Alloy CO., Ltd.		Ishikawa TAKAZAWA Candle Co., Ltd.		Fukui KISSO CO.,LTD.		Fukui STYLE OF JAPAN,INC.		Fukui Kawai Co., Ltd.		Fukui Plastics Co., Ltd.		Yamanashi KoaCute		Nagano RITUAL the crafts		Gifu NIKKEN CUTLERY CO., LTD.		Gifu Saki Kanetsugu Cutlery Co., Ltd.		Gifu Juengama		Gifu MARURITAMAKI RIKIZO SHOTEN CO.,LTD.		Shizuoka NUKUMORI KOUBOU Co.,Ltd.		Shizuoka N-K-F Ink.		Shizuoka Hikimonoj639 Corporation		Shizuoka Toyooka Craft Ltd.		Shizuoka Nishio Kogyo Co.,Ltd.		Shizuoka Enshu Spring Co.,Ltd.		Shizuoka MACRW Co., Ltd.		Aichi Sunusan co., Ltd.		Aichi Enchant		Aichi Ceramic Japan Co., Ltd.		Aichi Tokai Slowtoy club
--	---	--	---------------------------------------	--	---	--	-------------------------------	--	--	--	---	--	--	--	--	--	--------------------------------	--	--	--	------------------------------------	--	---------------------------------------	--	-----------------------------	--	------------------------------------	--	---	--	---	--	-------------------------	--	--	--	--	--	-------------------------------	--	--	--	---------------------------------------	--	---	--	---	--	------------------------------------	--	-----------------------------------	--	-------------------------	--	--	--	------------------------------------

JETRO
Japan External Trade Organization



経済産業省
Ministry of Economy, Trade and Industry



[Contact]

Japan External Trade Organization(JETRO)
Digital Promotion Division, Digital Trade and New Industry Department
E-mail DNA-project@jetro.go.jp
www.jetro.go.jp/en/ind_tourism
Copyright © 2020 JETRO. All rights reserved.