



ESSENCE
OF
JAPAN

MASTERY
COLLECTION

TAKUMI NEXT 2019



TAKUMI NEXT 2019

Contents

Eastern Japan

- 001** / Sasaki Kogei Co.,Ltd.
Hokkaido
- 002** / Takizawaveneer Co.,Ltd.
Hokkaido
- 003** / Kimura Woodcraft Factory Ltd.
Aomori
- 004** / Nigara Forging Co.,Ltd.
Aomori
- 005** / TM Planet Co.,Ltd.
Iwate
- 006** / Joboji Urushi Workshop Co.,Ltd.
Iwate
- 007** / Iwate Iron Co.,Ltd.
Iwate
- 008** / Ikumi Sawada
Miyagi
- 009** / Setoya Corporation
Miyagi
- 010** / Yoshinobu Shibata Enterprises Ltd.
Akita
- 011** / 245studio
Yamagata
- 012** / Tsuruoka Silk Co.,Ltd.
Yamagata
- 013** / Maruishi Industry Co.,Ltd.
Yamagata
- 014** / Dekoyashiki Honke Daikokuya
Fukushima
- 015** / Aizu ultraviolet Japan Group
Fukushima
- 016** / Saiei Orimono Co.,Ltd.
Fukushima
- 017** / Takahashi sports Co.,Ltd.
Ibaraki
- 018** / Nissei Inc.
Ibaraki
- 019** / SakamotoSyouten Co.,Ltd
Tochigi
- 020** / mother tool inc.
Tochigi
- 021** / Mountain deer inc.
Gunma
- 022** / Yamamoto Farm Corporation
Gunma
- 023** / KIMONO DE RAKU
Saitama
- 024** / tadanoyamamoto
Saitama
- 025** / Y.S.M Co.,Ltd.
Saitama
- 026** / Musashino uniform Co.,Ltd.
Saitama
- 027** / ART DIVE Co.,Ltd.
Chiba
- 028** / WABI WORLD
Tokyo
- 029** / Ustech International,Ltd.
Tokyo
- 030** / COLS Co.,Ltd.
Tokyo
- 031** / STUDIO BYCOLOR
Tokyo
- 032** / DECORO TEXTILIA
Tokyo
- 033** / DosukoiJAPAN
Tokyo
- 034** / CHIYOJI
SUMIYE&COMPANY
Tokyo
- 035** / chikusen Co.,Ltd.
Tokyo
- 036** / TRINUS, Inc.
Tokyo
- 037** / ALIANSA Co.,Ltd.
Tokyo
- 038** / ANCHOR Co., Ltd.
Tokyo
- 039** / Craft Design Technology
Co.,Ltd.
Tokyo
- 040** / Creco-lab, Inc.
Tokyo
- 041** / Yugengaisha
nisshin-kikinzoku.
Tokyo
- 042** / HIROTA GLASS Co.,Ltd.
Tokyo
- 043** / Akari Co., Ltd.
Kanagawa
- 044** / Arvore Corp.
Kanagawa
- 045** / Marumi Yasuda Kawara Kogyo
Corporation
Niigata

Western Japan

- 046** / Glass Studio"Shojiguchi-ya"
Toyama
- 047** / MIYAZU Co.,Ltd.
Toyama
- 048** / NAGAE Ltd.
Toyama
- 049** / Matsui silk weaving Co.,Ltd.
Toyama
- 050** / AMANOSHIKKI Co.,Ltd.
Toyama
- 051** / General Incorporated
Association The Dragon Route
Promotion Council
Ishikawa
- 052** / KANORYU Co.,Ltd.
Ishikawa
- 053** / kagamizuhiki
tsudamizuhikiorikata
Ishikawa
- 054** / STYLE OF JAPAN,INC.
Fukui
- 055** / Gen Maeda & Co.,Ltd.
Yamanashi
- 056** / yamazakiorimono
Yamanashi
- 057** / Delta Project Co.,Ltd.
Yamanashi
- 058** / mag design labo.
Shizuoka
- 059** / Hikimonojo639 Corporation
Shizuoka
- 060** / Nissho Kogyo Co.,Ltd.
Shizuoka
- 061** / YAMAI Pottery Co.,Ltd.
Gifu
- 062** / OKADABOUSUIFUTEN
Gifu
- 063** / Aderia Co.,Ltd.
Aichi
- 064** / Kitamura Japan Inc.
Aichi
- 065** / NIWA FUTON
Aichi
- 066** / Tokai Slowtoy club
Aichi
- 067** / WESTY INDUSTRIES Co.,Ltd.
Shiga
- 068** / Yamanishi Warping Factory
Shiga
- 069** / MOLATURA Co.,Ltd.
Mie
- 070** / Chico glass isho Kyoto
Kyoto
- 071** / ism
Kyoto
- 072** / Issin koubou
Kyoto
- 073** / TOHGORO Co.,Ltd.
Kyoto
- 074** / A-STORY Inc.
Kyoto
- 075** / Ko-ei Kougei Co.,Ltd.
Kyoto
- 076** / BAN INOUE Ltd.
Nara
- 077** / KISHU Plus LLP
Wakayama
- 078** / YUMESHOKUNIN Co.,Ltd.
Osaka
- 079** / Seiko Trading Co.,Ltd.
Osaka
- 080** / FUKUROYA TOWEL & Co.,Ltd.
Osaka
- 081** / TOYO STEEL Co.,Ltd.
Osaka
- 082** / Horiuchi Mirror Industry Co.,Ltd.
Osaka
- 083** / MEIKI SHOJI Co.,Ltd.
Osaka
- 084** / SORTE GLASS
Hyogo
- 085** / Sewing Takeuchi Co.,Ltd.
Hyogo
- 086** / kinari glass Co.,Ltd.
Hyogo
- 087** / WHOVAL Co.,Ltd.
Okayama
- 088** / TAKEYARI Co.,Ltd.
Okayama
- 089** / Murataya Corporation
Shimane
- 090** / Hiroshima Artist Brush Mfg. Co.,Ltd.
Hiroshima
- 091** / Shippaint Fujita Co.,Ltd.
Hiroshima
- 092** / Kinuya Co.,Ltd.
Tokushima
- 093** / NAKAWOOD Co.,Ltd.
Tokushima
- 094** / Dairi Lumber Co.,Ltd.
Tokushima
- 095** / nabeshima kosengama
Saga
- 096** / Yamahei Kamamoto Corporation
Saga
- 097** / Kinshodo Co.,Ltd.
Saga
- 098** / GreeNexus Co.,Ltd.
Kumamoto
- 099** / Oita Made Co.,Ltd.
Oita
- 100** / j pack Co.,Ltd.
Oita
- 101** / newfocus Inc.
Oita



PRODUCT 001
HOKKAIDO



SASAKI
KOGEI
CO.,LTD.



Asahikawa knows a name in the whole country as a producing center of accumulation material of wood and furniture. It's supported by furniture industry and there is industry necessary to carpenter processing and the technological accumulation which is developed is the town carpenter processing is easy to do where and is expensive woodworking machine, processing consumables, wood, and an administrative research institute. The time of 40 years began processing of wood manufactures at such Asahikawa and passed, and Sasaki-Kogei has been specialized to the factory which can mass-produce wooden products. Though the large machine used by furniture industry is introduced, a detail builds the system that the wooden attachment which is to complete it by hand processing and is high-quality can be produced from 100 by 10,000 unit. Though we produce 250 points of in-house original goods mainly present, correspondence of OEM from an enterprise and custom-made item processing in every region of the country is being also done. We are providing for manufacturing of the high quality a customer can appreciate by putting emphasis on a value appeal, not the price, in the world, "It's made in Japan indeed.", the manufacturing of the high quality you can say is continued.

The founder who liked manufacturing from childish time plunged into carpenter industry simultaneously with junior high school graduation. Later, he became independent in the twenties while having the thought that "I'd like to give relief to people by the warmth of wood."

COMPANY

Language support	Japanese, English	Email	y-sasaki@sasaki-kogei.com	Representative	Yujiro Sasaki
Name	Sasaki Kogei Co.,Ltd.	Establishment	1976		
Address	Nagayama 14-3-4-10, Asahikawa-city, Hokkaido, 079-8424	Products	Door Melody Owl S		
		Tel	+81 166-25-2288		



PRODUCT 002
HOKKAIDO



TAKIZAWA VENEER CO.,LTD.



Using Paper-Wood that it developed uniquely in 2009 as the main material, it manufactures products carefully with its advanced woodworking skills in Asahikawa, one of the largest furniture production areas in Japan. Paper-Wood is a plywood that has colorful and beautiful cross section born of an innovative method involving the lamination of colored recycled paper and wood grown in Hokkaido. The production area has the potential of new designs by creators active in Japan and overseas, an appealing expression that other materials do not possess, and a self-sufficiency in materials production to processing within Hokkaido. PLYWOOD laboratory sends out splendid and appealing products that are available nowhere else in the world.

COMPANY

Language support Japanese, English
Name Takizawaveneer Co.,Ltd
Address Nokanan-Cho Ashibetsu-City, Hokkaido

Email takizawatakahiro@takizawaveneer.co.jp **Representative** Kazuhisa Takizawa
Establishment 1936
Products koishi
Tel +81 124-27-3111



PRODUCT 003
AOMORI



KIMURA WOODCRAFT FACTORY LTD.



Hirosaki cultivates apples most in Japan. There are many apple trees that finished their duties because of various reasons every year. Most of them are used for firewood or sadly just dumped. Since they are very thick and long, and already have many knots, it would take a lot of time to use them as a “wood”. “CHITOSE”, the 1st brand of Kimumoku, produces a lot of items made by apple trees. We cut apple trees, lumber, make them dry by ourselves. Even though we can use just half of the apple trees, we will use apple trees because they are precious domestic resources, because we want to introduce their special textures.

“We aspire to bring peace both physically and spiritually to our people lives through our fully customized products.”We have started with development of the ladder made of Aomori Hiba wood, and then shifted to doors and windows, furniture, And store fixtures to go with the times accordingly. Here we are also in the period that we can hardly survive without evolution. The interior products made of apple tree, “CHITOSE”, and play equipment,“Warahand” started 10 years ago have now grown up to be our original core brands.We believe that there are a lot more fields to take advantage of our skill of a craftsman. We are going to focus on Medical welfare, repairing cultural assets, renovation of apartments utilizing our material grown in Aomori.We will make a strong effort to make our wood manufacturing with craftsmanship known to people around the world.Opportunities come out of tough corners, and ideas emerge infinitely. We would like to be a small local but fascinated factory.

COMPANY

Language support	Japanese, English	Email	info@kimumoku.com	Representative	Takayuki Kimura
Name	Kimura Woodcraft Factory Ltd.	Establishment	1995		
Address	4-3-17 Chitose, Hirosaki, Aomori,	Products	Stand Mirror		
		Tel	+81 172-87-2747		



PRODUCT 004
AOMORI



NIGARA FORGING CO.,LTD.



Each one is handmade, making soulful things. I am trying to produce with specifications from the standpoint of the user. A thousand days of training is forged, and a thousand days of training is ... With these words in my heart, I have continued to make things from a customer's perspective every day. I want to pass on the passion and passion for making things cultivated over 350 years of history to the next generation. The French novelist Victor Hugo says, "Pearls don't melt away even in the mud." We want to continue to be a shining pearl at any time. That is my wish.

Our company is one of Japan's leading swordsmiths. The technology has been studied and enhanced over 350 years of history. Swords are the highest peak in blade making and require high technical skills. The technology that has been handed down from generation to generation has been used to produce weapons such as cannons, rope guns, and swords. After the Second World War, the demand for Japanese swords decreased, and the high metal processing technology cultivated with swords is now applied to blade making and steel frame construction. The founder's desire is to make a knife that can be cut without cutting, bending and cutting well.

COMPANY

Language support Japanese, English
Name Nigara Forging Co.,Ltd.
Address 4-1 Kinzoku-cho Hirosaki-shi Aomori

Email nigara.h@axel.ocn.ne.jp **Representative** Toshihisa Yoshizawa
Establishment 1924
Products Gyuto210mm
Tel +81 172-88-2881



PRODUCT 005
IWATE



TM PLANET
CO.,LTD.



“Joboji lacquer” is made in the hometown of “Joboji”.As the best lacquer production area in Japan, it occupies 70% -80% of Japanese lacquer.It is indispensable for the repair and restoration of national treasures and important cultural properties such as Nikko Nissha Ichiji Temple including Nikko Toshogu, Chusonji Golden Hall in Iwate, and Rokuonji Golden Pavilion in Kyoto.Unfortunately, however, 98% of the lacquers used in Japan depend on imported goods from abroad.In this situation, there may be no craftsman collecting Japanese lacquer.In addition, Japanese lacquer painting artists are becoming difficult to pass on advanced technology due to sluggish demand.Lacquer was with Japanese life. It has been used as an everyday container, as a building material, and as a material for arts and crafts. Can lacquerware and lacquer crafts that do not use domestic lacquer be Japanese traditional lacquer wares and lacquer crafts?Isn't lacquer taken from lacquer trees grown in the Japanese climate the best for buildings and lacquerware in Japan?“JOGA” was created to convey the lacquer and lacquer production technology of Joboji and traditional lacquer crafts to the world and future generations.

I wanted to spread Joboji lacquer.Originally I was doing business related to watches and jewelry, so I had no knowledge of lacquer, but there was a strong desire to make real Japanese lacquer products.Read various documents, actually get the product, meet the lacquer producers and observe the work.

I went to various places, such as lacquer painters and Japanese lacquer painters, and learned a lot.

Fortunately, when I explained the purpose of advertising Japanese lacquer at Joboji, I had never painted Maki-e using Japanese lacquer on watch, but everyone helped me.

COMPANY

Language support Japanese, English
Name TM Planet Co.,Ltd.
Address ASTY Midorigaoka2F,4-1-50,
Midorigaoka,Morioka-shi,Iwate

Email info@tokeshop.com
Establishment 1983
Products Jakuchu's Birds,Animals,and Flowering Plants
Tel +81 19-656-7227

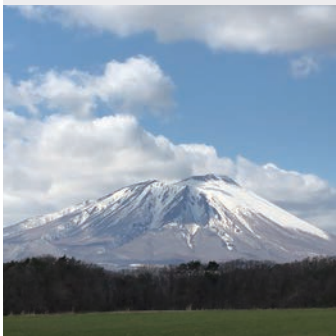
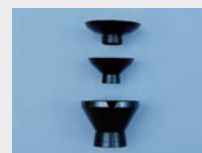
Representative Tadashi Taguchi



PRODUCT 006
IWATE



JOBOJI URUSHI WORKSHOP CO.,LTD.



Iwate is a lacquer production area. We made a liquor set that made full use of the local lacquer. Completed a stylish form.

“Joboji Temple” is not the name of a temple, but a place name in Ninohe city, Iwate prefecture.

Known as a lacquer producing area for a long time, there were so many lacquer trees that craftsmen moved from Fukui prefecture, which was a mecca for lacquering in the Meiji period.

In particular, Joboji lacquer is used for repairing and repairing national treasure buildings such as Golden Hall of Chusonji and Golden temple in Kyoto.

Japanese lacquer is currently produced in Iwate, Ibaraki and Niigata prefecture, but Iwate produces over 70% of domestic lacquer and consistently produces everything from raw materials (lacquer) to products (lacquerware). It is a rare region in Japan.

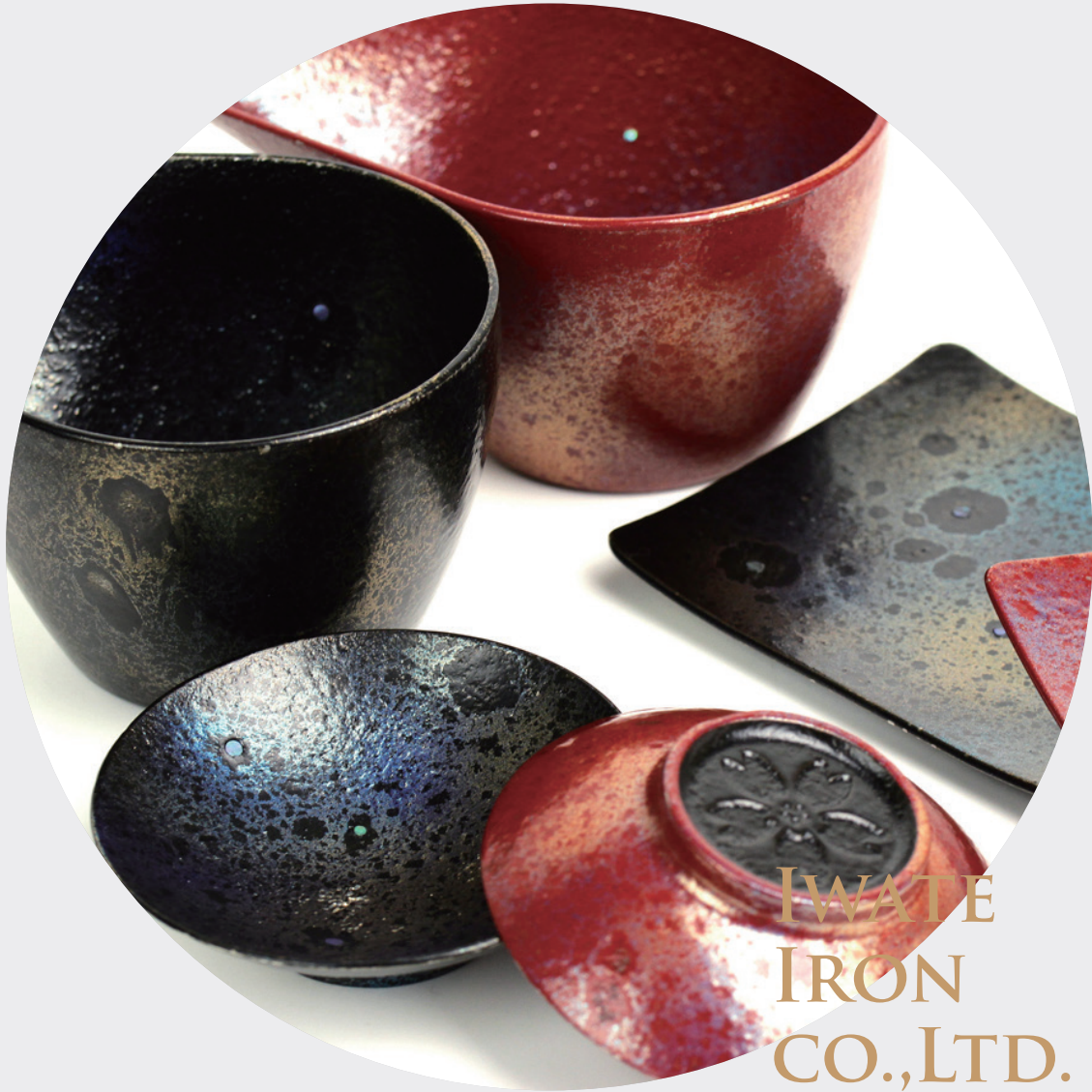
98% of lacquer used in Japan is imported from China and Vietnam, and only 2% is domestic. Joboji in Iwate is the last stand of Japanese lacquer. The role of the Joboji lacquer industry is to pass on the quality and safety of domestic lacquer to future generations and protect traditional crafts.

COMPANY

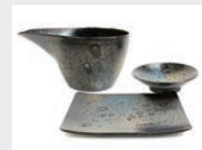
Language support	Japanese, English	Email	matsuzawa@japanjoboji.com	Representative	Takuo Matsuzawa
Name	Joboji Urushi Workshop Co.,Ltd.	Establishment	2009		
Address	3-6-1 Honchodori Morioka-shi Iwate	Products	Kakuhai		
		Tel	+81 19-656-7829		



PRODUCT 007
IWATE



IWATE
IRON
CO.,LTD.



Made in Iwate
In the birthplace of Nambu ironware, ironware has evolved even further.
Unrivaled
A world-first in cast iron ironware
Ductile metal thinning technology x Three-layer cast metal structure
/Surprisingly thin and light
/Surprisingly rust-free
/Surprisingly scorch-free

The company has a history of 70 years since it was established in 1949 in Kitakami City, Iwate Prefecture for the purpose of steelmaking. At the time of its establishment, it has developed a steelmaking business that supports the post-war (World War II) reconstruction period, and has been producing and selling pig iron for castings using blast furnaces for key domestic industries. In 1994 (Heisei 6), we withdrew from the iron and steel industry in the wake of the massive reorganization of the steel industry due to the global steel recession, and switched to the manufacturing industry for industrial casting products. It was based on the technology and achievements cultivated over many years through the manufacture of steel and castings, this time, light, non-rusting and scorching with our original thin tough cast iron (spheroidal graphite cast iron) and surface modification by nitriding / oxidizing treatment. We have developed an ironware with three features that are not connected, and will release it domestically and overseas. A company that always contributes to society with the philosophy of pursuing advanced technologies and flexible ideas, and constantly creating new power as people's lives, environment, and safety evolve in a more comfortable direction. I am aiming for.

COMPANY

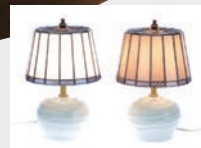
Language support	Japanese, English	Email	takase.i@iwateiron.co.jp	Representative	Mitugi Sato
Name	Iwate Iron Co.,Ltd.	Establishment	1949		
Address	18-14, Fujine Waga-cho Kitakami-shi, Iwate,	Products	Mother of Pearl Inlaid lacquer Iron Base		
		Tel	+81 197-73-5121		



PRODUCT 008
MIYAGI



IKUMI
SAWADA



Stained glasses, which were born in the ancient Europe, have been fascinating us without any changes from their births. Many people assume the gorgeous stained glasses with multiple colors, such as a tiffany lamp and the ornament of stained glasses in a church. However, my works are different from the traditional stained glasses. I use a simple design with a coherent color and I make a product to be used in a life space from a contemporary space to a traditional Japanese architecture without any strangeness. I want to highlight the space without appealing the existence of stained glasses. I always keep in mind that the beauty of Japanese culture is the base of my artwork. As the beauty of glasses never changes almost permanently, I want to design the product, which is loved by all generations. To pursue the originality of my work, I collaborate with the artists whose expertise in wood, ceramic and ironware in Japan. I hope to develop a new frontier of the stained glasses by incorporating the unique Japanese culture.

We have many crafted products, folk crafts and daily necessities from Japan and all over the world in our store, the day-play concept store-. You may feel multiple culture and values here. Our house was built 100 years ago. After some renovations, we started our store in which there is my atelier. Our store is located at Kawara town in Sendai city. The town spreads along with grand Hirose River and flourished as a south gate of the Sendai castle. There are some historical architectures in this area. Though it is located a bit far from the downtown of Sendai city, the artistic and creative environment with great people encouraged us to start our store here. Since we opened the store, we have been able to continue our creative works by many supports from the customers and the people involved. The art glasses for the stained glasses are all hand made by craftsmen. I have been designing the best products, which are suited well with the glass materials with different properties. I am feeling that I have improved my technique and idea as I gain the experience. Fortunately, I have been able to expand my artistic activity but I always keep in mind that I have a responsibility to my art works and I must keep producing the better products. My philosophy has never changed since I began the life as a stained glass artist.

COMPANY

Language support	Japanese, English	Email	sawada@playforlives.com	Representative	Rui Abe
Name	Ikumi Sawada	Establishment	2013		
Address	Miyagi prefecture, Sendai-city, Wakabayashi-ku, Kawaramachi, 1-5-41	Products	bigelow		
		Tel	+81 22-395-9861		



PRODUCT 009
MIYAGI



SETOYA CORPORATION



Mr. Konno told me that he wanted to make a bowl using local Ogatsu stone, so I thought it would be fun and tried to make a sample. However, I had a hard time with the thinness of my mouth and the composition of Ogatsu stone. It was difficult to bring out the texture of Ogatsu stone by utilizing the crystal habit. The thinness of the mouth was the most important. Prototypes were repeated many times, leading to this work. Mr. Konno told me that he wanted to make a bowl using local Ogatsu stone, so I thought it would be fun and tried to make a sample. However, I had a hard time with the thinness of my mouth and the composition of Ogatsu stone. It was difficult to bring out the texture of Ogatsu stone by utilizing the crystal habit. The thinness of the mouth was the most important. Prototypes were repeated many times, leading to this work.

70 years have passed since the grandfather founded a tableware wholesale business. When we were founded, it was an era when tableware wholesale was not yet established in Sendai. Time has passed, and now is an era full of goods and information. I thought about the significance of our company in such an era full of goods and information. Significance of the only tableware wholesale store in Tohoku ... Every direction we go was written in the management philosophy.

Management Philosophy

1. Distribute the "clear" and "irodori" possessed by ceramics to the community, 2. Improving food and lifestyle culture, 3. As a sincere exchange medium, it will be a bridge for creating a pleasant social life, 4. Contribute with enthusiasm to the unlimited development of Japanese traditional ceramic industry. There are many traditional attractive vessels in Tohoku. I wanted to protect the many traditional kilns in the local Tohoku region, To maximize their charm, and send them to the whole country. I thought that was the significance of the existence of a local tableware wholesaler. Therefore, we launched the "Saijiki Tohoku" brand, which uses local materials and is created by local writers to offer historical backgrounds, cultures, and usage scenes. "Saijiki Tohoku" will not only manufacture and sell designs, But will also carry out activities to convey the historical background of dishes, food culture, and knowledge that will enrich your life. In the future, I would like to send it to the world so that it can become a "colored earthenware" that enriches my lifestyle.

COMPANY

Language support	Japanese, English	Email	tomoya@setoya.co.jp	Representative	Shinsuke Konno
Name	Setoya Corporation	Establishment	1949		
Address	2-15-7, Oroshimachi, Sendai Shi Wakabayashi Ku, Miyagi Ken, 984-0015,	Products	Yesetsu		
		Tel	+81 22-232-0135		



PRODUCT 010
AKITA



YOSHINOBU SHIBATA ENTERPRISES LTD.



The Odate Magewappa bento box lunch box can be made unpainted to fully utilize the humidity control effect of natural cedar. We continue to produce “Unpainted Bending Wappa” because we want to have delicious rice. In order to pass down the natural cedar that the climate of North Tohoku has grown carefully and the techniques that the predecessors have handed down to the future generations. While creating a good relationship between the creator, the user, and the communicator, we aim to create products that connect from parent to child and from child to grandchild.

It is my belief that traditional art crafts should be preserved and improved. I did not produce OHITSU and HANGIRI by myself. In 1980, when I was selling Magewappa at a demonstration, one of my customers asked me to have an OHITSU made with a round corner to scoop rice easily. At that time, it was so difficult to make round a corner off. I wanted to meet the requirement and started. Thanks to a lot of advice from many university professors and technical experts, I was able to master the technique, which uses a potter's wheel, after three years. At last I completed the OHITSU and HANGIRI to satisfy my customers and I was given the Good Design Award by the Ministry of International Trade and Industry. I would like to keep making Magewappa products which have practical use and beauty to make our lives richer.

COMPANY

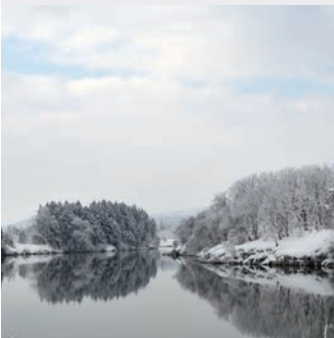
Language support	Japanese, English	Email	info@magewappa.com	Representative	Yoshimasa Shibata
Name	Yoshinobu Shibata Enterprises Ltd.	Establishment	1966		
Address	15-28, 2-chome, Onari-cho, Odate City, Akita Prefecture	Products	Plain wood Round bento box		
		Tel	+81 186-42-6123		



PRODUCT 011
YAMAGATA



245
STUDIO



White, beautiful and delicate porcelain. Silver will be tarnished to appear well-loved.
These remind me of a view of Yamagata that's covered in deep snow.
To people of Yamagata origin, it would produce feelings of nostalgia.

Yamagata Prefecture is known for sake.
People love sake and enjoy it the transitioning seasons.
I hope you enjoy sake and this sake cup with your five senses: feel the texture of porcelain, and enjoy the changing color of the SAKE cup, as if enjoying the view of each season.
I believe that this extraordinary sake cup will encourage you to relish sake.

COMPANY

Language support Japanese, English

Name 245studio

Address 3120-52 Natori, Murayama-shi, Yamagata-ken

Email tkhr1006yhg@gmail.com **Representative** Yahagi Takahiro

Establishment 2014

Products clayzen

Tel +81 90-5830-5177



PRODUCT 012
YAMAGATA



TSURUOKA SILK CO.,LTD.



Tsuruoka City “Samurai-related Silk : A town that meets the original landscape of modernization in Japan” There is “Matsugaoka Kaiyuba” which was certified as a Japanese heritage in April 1980. Ecological and natural “kibiso” that wants to use “kibiso”, the thread that spiders spout first. A world textile designer, Reiko Sudo, who incorporates the design of Tsuruoka’s old-fashioned technology and branding it with the image of this castle town. That is “kibiso”.

Concerned about the time when the Japanese silk is disappearing, with the aim of connecting the Japanese silk industry that has continued so far to the future, with “sustainable” and “ethical” in mind. I would like to return from Japan, the end of the Silk Road, and launch the silk brand “kibiso” from Tsuruoka to the world.

COMPANY

Language support Japanese, English
Name Tsuruoka Silk Co.,Ltd.
Address 223-5 Nihonkoku Daihouji Tsuruoka-City Yamagata

Email miki-saito@t-silk.co.jp
Establishment 2010
Products Crash Stall “City” Black / White / Red / Green / Yellow
Tel +81 235-29-1607

Representative kyousuke yamato



PRODUCT 013
YAMAGATA



MARUISHI INDUSTRY CO., LTD.



A traditional fabric for the modern age starting with the felling of the trees, the entire production is done by hand. The process is in stark contrast to the modern manufacturing mantras of 'faster' and 'more' as it requires patience and perseverance, a perfect description for Shina fabric. In addition, as it is made from a naturally occurring material it is great on the environment. In such a high-paced society, we feel that a material purposely made by hand is the height of luxury. Craft is dictated by the functions and designs desired by the times. That is why we chose the theme of a traditional material for the modern age. We provide a high-quality, sophisticated design that brings out the best features of a fabric woven in the same way it was many centuries ago.

Makoto Ishida founded Shinaori Sogei Ishida in 1990 to leave future generations Shina fabric, 'the real thing from Japan'. While in Tokyo at the age of 20, Ishida had a fateful encounter with a fabric that had a strange energy. That was the Shina fabric woven in his home of Yamagata. There was a severe lack of weavers at that time and Shina fabric was at risk of dying out. Although it is such a great material, it was only being used for souvenirs or folk art pieces. 'If only I could use the characteristics of the material to their full potential and spread this high-quality product throughout Japan and the rest of the world', Ishida kept thinking, as he turned the highly-breathable material into hats, Or bags that are light yet sturdy. Ishida was very particular about the design, spending many sleepless nights researching to develop a modern, sophisticated product with great sense while maintaining its traditional beauty. With their contemporary take on an old fabric, Shina fabric products started being sold at department stores and specialty stores in the main centers of Japan increasing its awareness and reputation. Still lovingly woven in the small villages and mountains of Yamagata and Niigata prefectures, Shina fabric has continued to find a new role in the daily lives of the next generation.

COMPANY

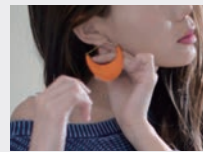
Language support	Japanese, English	Email	koohy1982@gmail.com	Representative	Jyunko Ishida
Name	Maruishi Industry Co., Ltd.	Establishment	1990		
Address	2-17-7 Oyama Tsuruoka Yamagata	Products	Light		
		Tel	+81 235-33-2025		



PRODUCT 014
FUKUSHIMA



DEKOYASHIKI HONKE DAIKOKUYA



The district of the “Dekoyashiki”, where our atelier is located, includes sightseeing spots because there are four craftsman workshops and their stores. The manufacture of Miharu Hariko has a 300-year tradition, and it still inherits all processes that have been handed down since the Edo period. For a long time, I have been trying to make a new Hariko by collaborating with various creators. As a sightseeing spot, a workshop is set up in a retail store, so it is possible to observe the manufacturing process and understand the value of Miharu Hariko before purchasing products. In addition, the painting workshop we hold to the tourists and customers would encourage to acknowledge the tradition, culture and technology both domestically and internationally.

The records at the time of the company's establishing are already unknown because of the deep history. The only thing revealed that there was a Miharu Hariko making culture for over 300 years in this area. This authentic craft tradition has been handed down as a work during the agricultural off-season for farmers. In Edo era, Miharu Hariko was honored to be said as the greatest toy, giving the people a rich life. For that reason, it has been proud of each generation and has been preserved to the present day.

COMPANY

Language support Japanese, English

Name Dekoyashiki Honke Daikokuya

Address 163 Tateno Takashiba Nishida-machi Kooriyama City Fukushima

Email syouchi.h@dekoyashiki-daikokuya.co.jp

Establishment 1700

Products harico jewelry

Tel +81 24-971-3176

Representative Shoichi Hashimoto



PRODUCT 015
FUKUSHIMA



AIZU ULTRAVIOLET JAPAN GROUP



Aizu Lacquer has been designated as a traditional craft, but the demand for lacquer ware has decreased, and the Aizu lacquer ware industry has struggled for many years. For this reason, UV Japanese lacquer (urushi) has been developed as a new technology that meets the current needs. UV Japanese lacquer (urushi) overcomes the weaknesses of lacquer by instant drying with ultraviolet rays. I would like to expand the use of UV Japanese lacquer (urushi) to the world by incorporating advanced technology into Japanese traditional crafts.

With the UV Japanese lacquer (urushi) developed as a new Japanese lacquer (urushi), the lacquered “Yu-aizu”, the lacquer ware manufacturing and sales “Sanyoshi lacquer” and the Buddhist altar Buddhist ware manufacturing and sales “Hoshi” will join hands to see the possibility of a new UV Japanese lacquer (urushi) We launched the “Aizu UV Japanese lacquer (urushi) Group” to explore. The three companies brought together the wisdom ingenuity and technology they have cultivated in their respective steps and started activities aimed at developing new products.

COMPANY

Language support Japanese, English
Name Aizu ultraviolet Japan Group
Address 40 Murahigashi Ichinoseki Monndenmachi Aizuwakamatushi Fukushima

Email ikeda@c-alte.com
Establishment 1900
Products Interior speaker painted by UV japanese lacquer(urushi)
Tel +81 242-27-4380

Representative Takashi Igarashi



PRODUCT 016
FUKUSHIMA



SAIEI ORIMONO CO., LTD.



Between the research and the sale, it took four years of continuous development of Fairy Feather®. In March 2012, just one year after the Great East Japan Earthquake, this world's thinnest and most lightweight silk fabric which won high praise at the Monozukuri Japan Grand Award has been known to the public. The media has took up it as a sign of the recovery of Kawamata and Fukushima. It was after the launch of Fairy Feather® that our company has begun to produce and sale the final silk products with own company brand. Fairy Feather® represent a simple and humble aesthetic of this production area which concentrated on weaving the lining fabrics and our spirit of the silk innovation.

It was the golden age of the silk industry in Kawamata when our company was founded in 1952. We did not doubt that we only produced the silk habutae for linings of Kimono and print scarves made in Yokohama. Now the fiber industry is in a serious slump but we recognize immense possibilities of the silk which will make revive our industry. We are struggling to develop the high value added fabrics. There were 60 employees (15 in 2019) in our company, one weaver was charge of 4 outdated weaving machines about sixty years ago (12 in 2019). The women employees who came from all over the town were proud of going to work by their bicycle provided by the company.

COMPANY

Language support Japanese, English

Name Saiei Orimono Co., Ltd.

Address 6-1 Baba Tsuruzawa Kawamata Date-gun Fukushima

Email stsumuraya@saiei-orimono.com

Establishment 1952

Products Fairy Feather Rainbow Stole (Salt Finish) Kaga-Yuzen Dyeing

Tel +81 24-565-2331

Representative Yasuyuki Saito



PRODUCT 017
IBARAKI



TAKAHASHI SPORTS CO.,LTD.



Skilled embroidery craftsmen who think that ukiyoe paintings that have had the greatest influence on the world of Japanese art can be made more fresh by expressing them in a different way, and embroidery techniques used in sports. After many years of research, we looked at the intervals between work, designed one needle at a time, made a mold and completed it in about 5 years. Ukiyoe masterpieces that are representative of Japan and popular in the world in recent years have been arranged into more dynamic works using embroidery techniques.

We want to help the health, friendship and glory of many people through sports. In keeping with the idea of the first president, many athletes have been excited about the store. Through the work of a professional baseball team, we were involved with embroidery craftsmen and challenged a genre different from sports. We are very happy to be in time for the upcoming Tokyo Olympics.

COMPANY

Language support Japanese, English
Name Takahashi sports Co.,Ltd.
Address 56-5 Midorityo Kogashi Ibaraki

Emai tsp@takaspo.info
Establishment 1959
Products Shisyuukiyoe
Tel +81 280-32-1450

Representative Syouji Takahashi



PRODUCT 018
IBARAKI



**NISSEI
INC.**



For many years, we have wanted to make use of our metalworking technology to create products that can celebrate happy moments in someone's life, such as weddings and birthdays. At that time, I happened to know Sapeur and wondered if I could make things with them someday. Finally, this Metal Butterfly was born. We will change the world through manufacturing and fashion.

Ichiro Aoki, the representative, suffered from illness for a year shortly after he went out of business in the manufacture of auto parts, which he had previously run as a private business, and started his current sheet metal processing company.

COMPANY

Language support Japanese, English

Name Nissei Inc.

Address 11-33 Ryugasakityobu Kawachimachi Inaskigun Ibaraki

Email aoki.nissei@gmail.com

Establishment 1989

Products Metal Butterfly

Tel +81 297-84-4533

Representative Ichiro Aoki



PRODUCT 019
TOCHIGI



SAKAMOTO
SYOUTEN
CO.,LTD.



We sell Japanese traditional craft barrels all over the world. This time we would like to spread the half-sized wall hanging barrels that our company registered in Japan. The feature of this product can be decorated with the height of the line of sight and the appeal is high. This is a product that can be expected to be used for displays in restaurants. In addition, the shipping cost is reduced to half of the conventional cost, which can greatly reduce the cost. This product was registered as a design in Japan. (Registration No. 1642463) Tochigi Prefecture has a long history of sake breweries, so Japanese sake culture has also permeated.

Our company has a history of 100 years. The establishment dates back to Taisho. It is a liquor store that continues for three generations as the current president. A company with a tradition and history is engaged in the sale of traditional Japanese barrel wine and traditional crafted barrels.

COMPANY

Language support Japanese, English
Nam SakamotoSyouten Co.,Ltd.

Address 1446 Niragawa Shimotuke-City Tochigi

Email info@taruzakeya.com

Establishment 1972

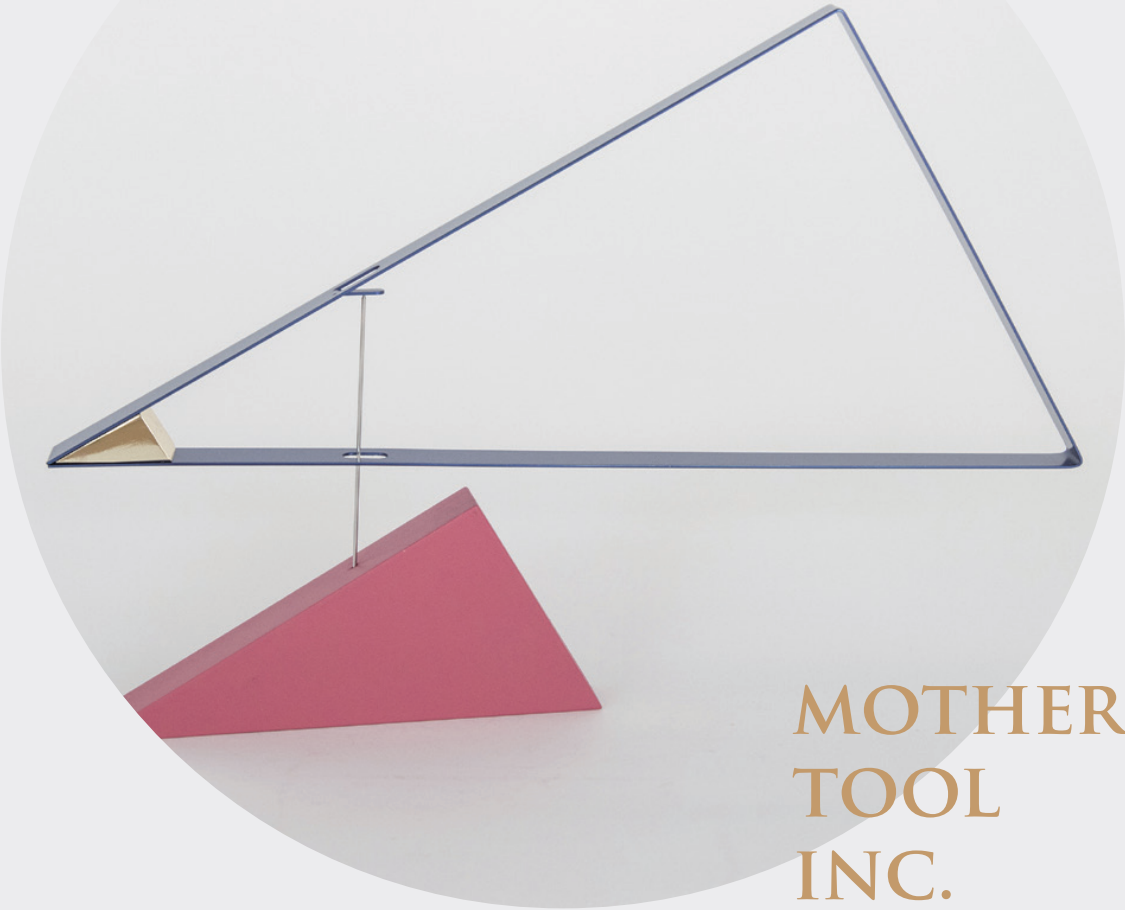
Products Decorative barrel half size Buyuu 18L.size

Tel +81 285-48-1805

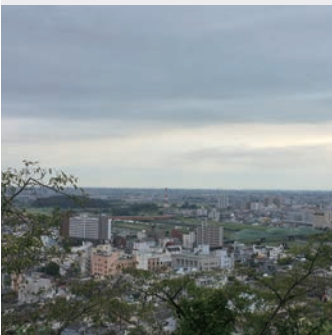
Representative Tatsuya Sakamoto



PRODUCT 020
TOCHIGI



MOTHER
TOOL
INC.



The tempo mobile is by architects and designers, the answer to their weight and balance, and a new product that approaches space and time. Assembling professionals are carefully assembled one by one by hand in a workshop in Tochigi Prefecture so as not to damage the balance.

From the assembly business of industrial products, which was a family business, the part of assembly is extracted and converted from subcontractors to in-house planning and development and production. In 2007, he focused on overseas development and expansion of sales channels such as collaborative development with ECAL (Lausanne State University of Fine Arts) in Switzerland.

COMPANY

Language support Japanese, English
Name mother tool inc.
Address 688-5 Maruyamacho Ashikagashi Tochigi

Email info@mothertool.com **Representative** Miho Nakamura
Establishment 2007
Products sail away
Tel +81 284-22-3144



PRODUCT 021
GUNMA



MOUNTAIN DEER INC.



After the war, the Nakajima airplane, which was the center of industry in Ota City, was dismantled and many engineers gathered in the city. Thanks to the engineers' use of hand-spinning machines in Ota City and the surrounding area of textile industries such as Kiryu City, it is said that knitting started in Ota City. The knitting industry in Ota city, which built an era in this way, had to change its appearance. Currently, there are fewer than 10 member companies, but their passion to create knitwear is still alive and well. The "OTA KNIT (Ota Knit)" was born as a role that will not dispel such passions and keep them alive for future generations. It was created as a concrete action to make Ota's knitwear known to people in and out of the city and to revitalize Ota's knitting industry through better manufacturing.

OTA KNIT has a desire to "keep Ota City's knit industry into a future generation." To that end, there is an issue that must first secure human resources for knit factories facing aging. However, as a practical matter, it is necessary to raise the cost for hiring, and for that purpose, sales must be made and profits must be made. We are aiming to increase sales by increasing the number of customers, and at the same time we expect that people who are interested in the knit industry in Ota City will appear as the brand is recognized. We expect that the protection of local industries and the economic effect will greatly contribute if the younger generation is engaged in the knit industry. Through OTA KNIT, we are aiming to revive the Ota City knit industry.

COMPANY

Language support	Japanese, English	Email	info@mountain-deer.com	Representative	Masaaki Yamaga
Name	Mountain deer inc.	Establishment	2012		
Address	239-6 Tomizawa-cho Ota-shi Gunma	Products	FINE WOOL DOT SCARF		
		Tel	+81 276-55-5205		



PRODUCT 022
GUNMA



YAMAMOTO FARM CORPORATION



In some parts of Gunma Prefecture, which accounts for over 90% of konjac production, konjac sponges were made in the severe winter season for more than 120 years, and used as a substitute for soft cloth when babies are born. In our company, we leave the goodness of handmade and mass-produce it in a dedicated factory under thorough quality and hygiene management. By not using antibacterial agents and preservatives, it is a product that focuses on safety. I would like overseas women to try out the “made in Japan” products born from Japanese life.

I was born in a konjac farmer, worked for a konjac company and worked with konjac. I founded the company because I wanted to spread new uses for konjac.

COMPANY

Language support Japanese, English

Name Yamamoto Farm Corporation

Address 1447 Ichinomiya Tomioka-shi Gunma

Email info@yamamotofarm.co.jp

Establishment 1990

Products Konjac Sponge KOMACHI

Tel +81 274-63-4566

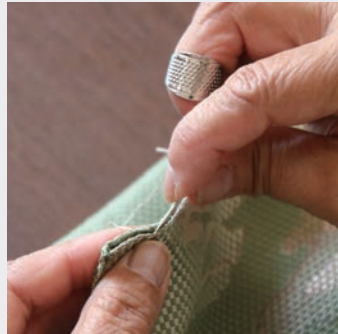
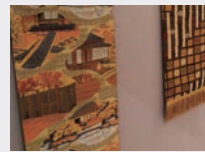
Representative Hiroshi Yamamoto



PRODUCT 023
SAITAMA



KIMONO DE RAKU



I would like to inherit the traditional Japanese kimono culture and things by remaking the fabrics & accessories of Japanese kimonos with clothes and accessories. I hope that the feelings can be communicated to people overseas. Kimono is a high quality fabric originally worn by generations of parents and children. I would be happy if I remake kimono that I didn't wear much in my daily life and I would be happy if you could use good things for a long time.

In Japan, when people get married, put kimono in the chest and bring it with them. Kimono has a wish of parents for their daughter's happiness. I often hear a word that people can't wear kimono anymore but can't let go of it. I would like to take over such a wonderful thing and changing its shape to match the current style. I would like to deliver this good things to the overseas. With that idea, I work with my companions every day.

COMPANY

Language support Japanese, English
Name KIMONO DE RAKU
Address 2731-18 Kawarabuki Ageo Saitama

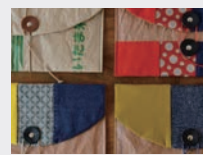
Email rakujapanbysatomi@gmail.com **Representative** Satomi Miyazaki
Establishment 2019
Products japanese belt(obi)
Tel +81 80-7323-3103



PRODUCT 024
SAITAMA



TADANO-
YAMAMOTO



The concept is “Let’s walk with the Japanese wisdom!”. A rice bag that has finished its job, persimmon tannin that was common in the past, the edge part of a tatami mat that decorated living space...

Japan has such wisdom and it is a waste not to use it. Let’s create new value by combining wisdom and materials used in Japanese life! We are working to create such products that bring a smile to people.

The city of Edo, once called as ‘the world’s largest eco-town’, was full of wisdom and ingenuity to use up something leftover and unnecessary. Rice bags which are thrown away after the end of their service, are very interesting materials in this era of excessive volume of goods in the market. We make the most of the attractiveness of such materials, and offer items that can be carried around.

COMPANY

Language support Japanese, English
Name tadanoyamamoto
Address Sankohaitsu 203 2-520-2 Owadacho Minuma-ku Saitama-shi Saitama

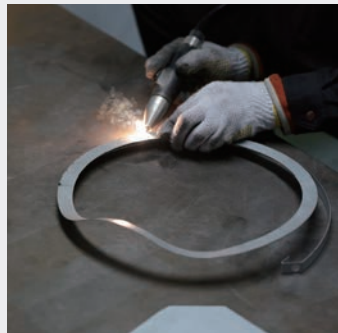
Email tadanoyamamoto.202@gmail.com **Representative** Natsuko Tada
Establishment 2017
Products Bag-in-bag
Tel +81 80-3704-9094



PRODUCT 025
SAITAMA



Y.S.M
CO.,LTD.



We are lighting manufacturer located at Yoshio-City, Saitama Prefecture in Japan. Please enjoy comfortable space by placing our lighting fixture. In this space, your conversation might be little different. This is our sincere hope that we help our users feel little more peaceful as well as smile little more. Mass production is not possible because Yoshio-City, Saitama Prefecture, manufactures one by one with craftsmanship. I would like it to be used by those interested in interior, design and light.

Nine years ago my uncle died and I became the CEO. Various serious things happened to the company, but thanks to the employees and family, I was able to grow the company. From now on, we will deliver happiness to you with light.

COMPANY

Language support	Japanese, English	Email	info@k-ysm.co.jp	Representative	Tetsuya Yashima
Name	Y.S.M Co.,Ltd.	Establishment	1992		
Address	2-342-1 Yashio City Saitama	Products	HOOP		
		Tel	+81 48-998-3610		



PRODUCT 026
SAITAMA



MUSASHINO UNIFORM Co.,LTD.



Tabi is a major traditional product of Gyoda City but the industrial performance has declined in recent years. Traditionally Tabi is black, white or navy color while we aim to increase the work of Tabi craftsmen and revitalize the region by developing a high fashionable pattern colorful socks as “Samurai Tabi” and expanding the market. The Samurai Tabi is a MADE IN GYODA Tabi that is made by Tabi craftsmen in Gyoda city. We would like to be known “Tabi as Gyoda” as consumers enjoy wearing high quality Tabi.

Traditional Tabi patterns uses usually black, white or navy color. The reason for the development of new product was that young people who like to wear kimonos wanted their Tabi with highly designed. At first, when I asked the Tabi craftsmen to produce this, they disliked it because of their eyes were flickering.

COMPANY

Language support Japanese, English
Name Musashino uniform Co.,Ltd.
Address 2-7-7 Fujiwaracho Gyoda-shi Saitama

Email komatsu@hotnet-jp.com
Establishment 1974
Products TOKYO ICHIMATSU
Tel +81 48-554-7325

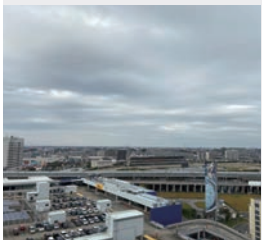
Representative Kazuhiro Komatsu



PRODUCT 027
CHIBA



ART DIVE
CO., LTD.



“MANAKA” aims to express the fusion of traditional technology and modernity in all areas of clothing, food and housing. In addition to fashion, I would like to expand opportunities to use and experience traditional techniques by increasing product development that integrates Japanese traditional techniques in the field of daily life. In addition, in order to pass on Japan's wonderful traditional techniques to future generations, it is necessary not only to know the techniques but also to create products that can be sold. Traditional goods cannot be left if things aren't sold, so how to make something satisfying while having fun in modern life has been a part of future development. It is a big challenge. I would like to expand the field of activities so that people can actually touch MANAKA products both in Japan and overseas, and I have created and manufactured products so that I can enjoy the world of MANAKA more. I want to challenge not only in selling but also in various fields such as events, performances, and video.

MANAKA is a brand that makes things as a new form, using traditional elements and technology so as to be easily adopted in modern life. From our desire to want to convey Japanese traditional culture to posterity. We transform each piece of work into the form putting our hearts into them carefully together with Japanese craftsmen and designers. And we have participated in various events and exhibitions in various countries. MANAKA kimono dresses were created for the purpose of making people better know about the culture of kimonos, first starting with something easy to wear and that can raise the curiosity of people. Easy to set with a front zipper, using a kimono fabric for the patterned part. Further, the kimono dress sash belt was made in a way to enjoy any style you wish. Light and comfortable to wear, a dress that gives an accent to the beauty of women. MANAKA's dress was worn by world super model Japan. And won the Best Designer Award.

COMPANY

Language support	Japanese, English	Email	yamanaka@artdive.jp	Representative	Yukiko Yamanaka
Name	ART DIVE Co., Ltd.	Establishment	2006		
Address	2-3-31-1612 Hamacho Funabashi-Shi Chiba	Products	MANAKA Phoenix dress		
		Tel	+81 90-2930-5274		



PRODUCT 028
TOKYO



WABI WORLD



There are yet appealed abundant culture assets and state of the art technology in Japan. Japanese archipelago extends north to south includes group of islands which specialty of each region flourishes own unique textile and skills by the elaborate sprits for original creation. WABI dedicate to discover the minded those technique and materials in Japan and develop products with them. Then pursuing Made in Japan production have come to highlight the craftsman and pioneers perfumed behind the products. We wish to be a one of supporter to enrich your life through sharing those discovery and surprise.

Founder of the brand Makiko Niimura began her career as a film producer. As she travelled around the world, interacting with creative individuals, she realized they all shared a fascination for Japanese aesthetics. At the same time, Niimura was intrigued by the limited exposure these beautiful designs had to Western cultures, and hence her vision was born. She translated her artistic background into creating the fabulous accessory line WABI. A brand of accessories based on ancient Japanese principles, techniques, and aesthetics that have been redesigned for fashion forward women of the 21st century. The inspiration for the line comes from the countless colors, patterns, motif and forms of the traditional Japanese kimono. These patterns, works of art in their own right, have been incorporated into eclectic and striking. The mission is to carry on the richness of the Japanese tradition by incorporating these vibrant colors, designs, and shapes, with a sense of remixing the old and new.

COMPANY

Language support	Japanese, English	Email	niimura@wabi.world	Representative	Makiko Niimura
Name	WABI WORLD	Establishment	2019		
Address	4-6-603 Sakuragaokacho Shibuyaku Tokyo	Products	KIWA Bangle		
		Tel	+81 90-8513-4785		



PRODUCT 029
TOKYO



USTECH INTER- NATIONAL, LTD.



Ustech Corporation is a renowned manufacturer of Japanese designer baths that aims to create every single product with precise craftsmanship and technology. Japanese technology has long been known for its quality and performance, but we take that a step further by blending those qualities with the fine beauty of Japanese design. In the creation of our product, we only use the finest and highest quality materials to ensure that our baths uphold the genuine experience of the long treasured culture of bathing in Japan. We aim to not only ensure high quality performance and safety, but also bring peace and healing to every single customer's bathroom. Our ultimate mission is for us to be able to deliver a taste of this history and unique experience to the rest of the world through our quality Japanese-style baths.

Since the establishment of Ustech Corporation in 1988, we have continued to create original designs for a wide range of products based on new and innovative developments, starting from bathtubs for hotels, Japanese inns, private homes, nursing homes, all the way to unit baths and shower booths. Building upon over 30 years of experience, we are proud to say that we have come very far since then. We have produced over 5,500 Japanese-style bathtubs for several customers who have continually chosen to work with us throughout the years, building a relationship of mutual trust and respect. We aspire to continually make innovative Japanese-style products that cater to our customers' every single need in order to share the beautiful and rich Japanese tradition of bathing to the world.

COMPANY

Language support	Japanese, English	Email	kristel@ustech-jp.com	Representative	Shigeru Uchiyama
Name	Ustech International, Ltd.	Establishment	1988		
Address	2-11-10 Minamiazabu Minato-ku Tokyo	Products	ERN Bathtub		
		Tel	+81 45-914-0028		



PRODUCT 030
TOKYO



COLS
CO.,LTD.



A fusion of tradition and modernity through materials, techniques and culture with the concept of a new beauty, we designed it so that the silk used in Saga Nishiki, a traditional cultural property, can be effectively and carefully matched with modern materials. Accessories that can make women more attractive and beautiful and show their glamor.

ne&de / Since it's established in 2008, ne&de has been announcing new designs every year.

nearest & dearest / It comes from the meaning of a loved one, the lineup with the main stone of the Native American guard stone "Turquoise" is a classic line. In the collection line with strong message, we have a lineup of various artistic techniques such as Japanese traditional silk "Saga Nishiki" and ethical materials.

COMPANY

Language support Japanese, English
Name COLS Co., Ltd.
Address 3F NK Bldg. 5-4-30 Minami Aoyama Minatoku Tokyo

Email creative@cols-design.com **Representative** Yasuyo Hori
Establishment 2008
Products Silk Thread Jewelry
Tel +81 3-6427-4018



PRODUCT 031
TOKYO



STUDIO BYCOLOR



I focused on wood because Japan is surrounded by forests in 70% of the country. I want to share the new charm of trees with people all over the world. This was made possible by the forestry people in Shinkiba, Tokyo.

Ten years of experience at an office furniture manufacturer and experience at a design office of a Dutch friend are the basis for the current STUDIO BYCOLOR activity. I work with various clients in an approach that makes use of the appeal of colors and materials. I am grateful that I can connect with more attractive people through INHERENT: PATTERN.

COMPANY

Language support Japanese, English
Name STUDIO BYCOLOR.
Address 6-17-17 Omorinishi Ota-ku Tokyo

Email info@studiobycolor.com
Establishment 2013
Products Contemporary Jewelry, Clock, Architectural Hardware
Tel +81 50-3558-9425

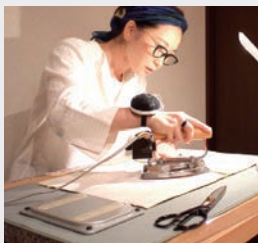
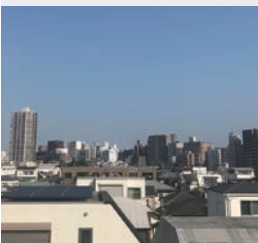
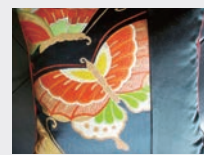
Representative Kaori Akiyama



PRODUCT 032
TOKYO



DECORO TEXTILIA



While I was learning “Katazome-Paste resist stencil dyeing”, I found in difficulty to get some special materials because Kimono industry is no longer popular and many of craftsmen disappeared. Some studios I used to order for Kimono making process, finally closed their business. Kimono maintaining regularly needs “MUSHIBOSHI” to dry out from the closet. Recycled smelly Kimonos and Obi belts usually sit in there for years. We take them to ARAI and YUNOSHI professionals to make a refresh. We would love to work with the specialists for long and wish these careful works sustain their business.

Once I was trying to have a business with crafts people in third countries, I saw several successful brands. Even poorest nations found a right way to make a business with their textiles and crafts supported by professionals from advanced. Then I asked myself “Should I do something for descended businesses in domestic which have no supports?”. More I see textiles all over the world, I realize that our Kimono is very attractive textile in many ways and am proud of it. I would like to share these fabulous designs with many people and let them rediscover Kimono world not as a traditional costume.

COMPANY

Language support	Japanese, English	Email	textiles@hirokojapan.com	Representative	Hiroko Hirose
Name	Studio Hiroko Hirose	Establishment	2019		
Address	1-15-3 Kohinata Bunkyo-ku Tokyo	Products	Kimono no Pillow		
		Tel	+81 90-7235-0688		



PRODUCT 033
TOKYO



DOSUKOI JAPAN



Our product was developed to be a gem that symbolizes good memories of Japan. In particular, the world's first general kesho mawashi incorporates the three elements of "sumo", "kimono", and "kanji" that make "Japan" look like. President Donald Trump, who came to Japan in May 2019, was presented with a "Dosukoi SUMO mawashi Original Trump President Version" and we received a letter of appreciation with an autograph from President Donald Trump. In July 2019, it was exhibited at "JAPANEXPO in Paris" and was well received by Japanese enthusiasts from France and other countries. A Belgian shop owner bought a product. In addition, PC cases, cushion covers, and tapestries that use kimonos and belts have been developed so that they can be enjoyed on a daily basis by methods other than "wearing" kimonos. A kimono that was used carefully by someone. We try to make things carefully so that we can pass on those thoughts to new owners in new ways. Tokyo, the main production area, is the capital of Japan, a city where cutting-edge technology is gathered, but there are still a lot of small garment factories that are home-grown industrially. We are making products.

I traveled as a backpacker in nearly 30 countries around the world and had a lot of fun, serious, coaxed, helped, and many experiences. Looking at the souvenirs that I bought for the memories of my trip, I remembered various events in different countries, and those memories illuminated my life. In the same way, not only Japanese people but also many people who visit Japan, Japan is interesting, fun, good country, it was good to come to Japan, Japanese people were good, I love Japan! I wanted to be able to have you think, and founded DosukoiJAPAN. We are working on up-cycle using kimono as the main material of the product, so that you can enjoy kimono, which is a national costume that is now less worn, by methods other than "wearing", and the original owner We are developing products to connect the important thoughts of people to the next customers. I hope that many people will enjoy the goodness and fun of Japan, and have the heart to think about Japan and other countries. Through our company activities, we are willing to contribute to World peace.

COMPANY

Language support Japanese, English
Name DosukoiJAPAN
Address 3-35-9 Koenjikita Suginamiku Tokyo

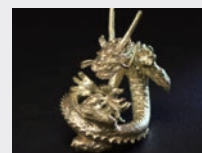
Email kyojukyoboku@infoseek.jp **Representative** Misako Watanabe
Establishment 2018
Products Cushion cover
Tel +81 70-5088-6819



PRODUCT 034
TOKYO



CHIYOJI SUMIYE & COMPANY



We design and sculpture with motifs related to Japanese culture and create objects and jewelry.

We are inspired by nature and familiar existence, and we are designing that will be loved and wanted to pick up. We create jewelry that use of sculpture by pursuing the shape of all things, based on the concept of “designing values, the joy of creating and the happiness who have them.” Provided opportunities to introduce Japanese traditional art, culture, and has contributed to the spread and development. We are also working to foster young artists and spread them as a bridge for international exchange.

COMPANY

Language support Japanese, English
Name CHIYOJI SUMIYE&COMPANY
Address 3-15-2 Kuramac Taito-Ku Tokyo Japan

Email chi.sumiye@herb.ocn.ne.jp
Establishment 2009
Products Dragon Object Silver There are 4 poses.
Tel +81 3-3864-7118

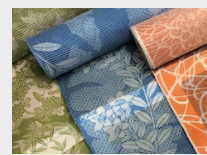
Representative Chiyoji Sumie



PRODUCT 035
TOKYO



CHIKUSEN CO.,LTD.



I am careful to design the dress so that the dressed appearance will be refreshed and looked like Edo. Furthermore, not only the design is complete, but also the design lines and details of how the design can be dyed into the fabric according to the image.

Dyed yukata, which was the mainstream of plain and squeezed, with a stylish pattern, the name spread throughout the country as an Edo souvenir. In addition, he creates novel designs through interaction with actors and cultural people who are at the forefront of the times. We got popular actors to wear (advertising tower) and spread their names.

COMPANY

Language support Japanese, English
Name chikusen Co.,Ltd.
Address 2-3 Nihombashi Kobunacho Chuo Tokyo

Email s.ogawa@chikusen.co.jp **Representative** Fumio Ogawa
Establishment 1842
Products Chikusen Yukata
Tel +81 3-5202-0991



PRODUCT 036
TOKYO



TRINUS, INC.



A chemical reaction occurs when two substances come together to form something new. Bringing forth new products with the power to amaze the world requires a fusion between superior original technology and design - a fusion strong enough to be called a chemical reaction. TRINUS, Latin for “triple”, brings together Japanese technology, design and end users in an open platform that offers a new realm of value.

There lies a diamond in the rough with hidden potential. Assumptions and common sense may be preventing its awakening. Let's gather ideas from outside the office, take inspiration from each other's ideas and aim for a brighter future. We at TRINUS create an environment that fosters collaboration, enabling the realization of wonderful possibilities. Birthing ideas which make the world exclaim “WOW!”

COMPANY

Language support Japanese, English
Name TRINUS, Inc.
Address Slack Shibuya 903 31-14 Sakuragaokacho Shibuya Ku Tokyo

Email yumi.kaneko@trinus.jp **Representative** Shinya Sato
Establishment 2014
Products Snow Pencils YUKI
Tel +81 3-5244-5796



PRODUCT 037
TOKYO



ALIANSA
CO., LTD.



This year is the 30th anniversary of our company. We have gained a variety of special Japanese techniques to produce our costume dresses with a beautiful line just by wearing them. Uchikake fabric, which is woven in Kyoto, is a real luxury material. However, Uchikake is a kimono for a wedding and difficult to resale, so we would like to remake for a dress. If there is no users and producers of this beautiful Japanese traditional material, it will have despaired. I will be very sad about it. Therefore, my company would like to introduce this wonderful UCHIKAKE and KINRAN crafting technology from Japan to the world. I want you to enjoy the great tradition as an ALIANSA dress.

COMPANY

Language support Japanese, English
Name ALIANSA Co., Ltd.
Address 1-1-4 Nanakuni Hachioji Tokyo

Email pc@aliansa.jp
Establishment 1989
Products For men's Ascot style Tie, butterfly ties
Tel +81 42-637-1231

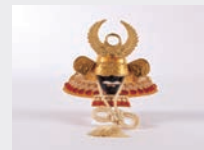
Representative Eiko Ueda



PRODUCT 038
TOKYO



ANCHOR
CO.,LTD.



Our “armor” is the ultimate traditional craft that is completed for the first time through about 5,000 processes after gathering Japanese-specific technologies such as goldsmiths, woodwork, Kyoto woven fabrics, braids and leather crafts. I am proud of that. Every one of the 5000 processes is packed with important thoughts that include the spirits of craftsmen. In order to provide better products without forgetting the spirit of constant challenge, we will continue to inherit the technologies inherited from the first generation, but further refine our original methods and sophisticated technologies to earnestly make products.

We feel great joy and pride in being able to create “one treasure in a lifetime” for our be born / born children. I work hard to make products every day, believing that I am impressed.

COMPANY

Language support Japanese, English
Name ANCHOR Co.,Ltd.
Address Hibiyakashi Bldg. 4F 3-28-15 Hatchobori Chuo-ku Tokyo

Email nagano@ap-anchor.jp
Establishment 1969
Products The Samurai Bottle Helmet Tokugawa Ietyasu
Tel +81 3-6280-2888

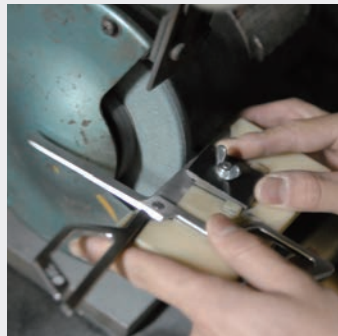
Representative Narue Masuda



PRODUCT 039
TOKYO



CRAFT DESIGN TECH- NOLOGY CO.,LTD.



Craft Design Technology - Three Words, One World
we bring these three words together by marrying modern design with Japanese heritage of traditional craft and technology innovation. We give a form to tradition, innovation, beauty and simplicity, and deliver meanings to our users. We bring new values of design quality to essential everyday objects, services and experiences.

COMPANY

Language support Japanese, English
Name Craft Design Technology Co.,Ltd.
Address 5th Fl., 2-4-3 Ningyo-cho Nihombashi Chuo-ku Tokyo

Email n-nishina@craftdesigntechology.co.jp **Representative** Azami Tawada
Establishment 2005
Products Stationary
Tel +81 3-3662-6837



PRODUCT 040
TOKYO



CRECO-LAB, INC.



Our company's items are made from Japanese cypress and cedar material sourced from forest thinning that is sliced into ultra-thin sheets roughly 0.1mm - 0.15mm thick. They are made from real wood, which imparts a warmth and sense of specialness to their look and feel, and creates a more relaxing atmosphere. Water and forests are precious resources for Japan. At Creco-lab, we design and manufacture wooden items using domestically-produced materials as products which will help to maintain Japan's forests and water. Kino straw is going to be the alternatives to plastic straws, And also help to maintain forests and water in Japan, like as our other items. We hope that the our item will spread as items for creating opportunities to maintain Japan's forests and water.

Originally I am interested in Japanese resources and energy issues. When learning at university, I was doing research on waste power generation, etc., but I thought that it is very difficult to create innovations on waste energy, and then began to focus on forest resources. Forest resources that are abundant in Japan are currently are not used properly. I hope that the our item will spread as items for creating opportunities to maintain Japan's forests and water.

COMPANY

Language support Japanese, English
Name Creco-lab, Inc.
Address 2-5-10-1102 shiba minato-ku Tokyo

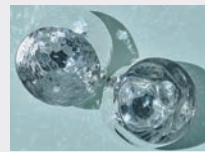
Email information@creco-lab.co.jp **Representative** Seiroku Okitsu
Establishment 2008
Products Kinostraw
Tel +81 3-6453-6916



PRODUCT 041
TOKYO



YUGEN GAISHA NISSHIN- KIKINZOKU.



We produce Tokyo silverware, designated by the Minister of Economy, Trade and Industry, in Taito-ku, Tokyo. Muneaki Kamikawa, a modern master craftsman, has presented a number of honorable medals and emblems such as the Oju Hosho (awarded by the Emperor of Japan) and Higashi Kuninomiya Cultural Awards (named following one of the former royal households in Japan). The Edokko (Native of Tokyo) family of three sons and one girl work in the same workshop. Based on the techniques that have been handed down from Edo to Tokyo, we aim to create next-generation traditional crafts that fuse the new senses of our successors, and study daily to create products that meet the needs of customers that match the current demands.

The 11th generation from the end of Edo, I want to continue and protect the traditional craft skills that have been handed down since ancient times in Japan. I want to deliver a work that conveys my heart from the creator to the user, always by ingenuity.

COMPANY

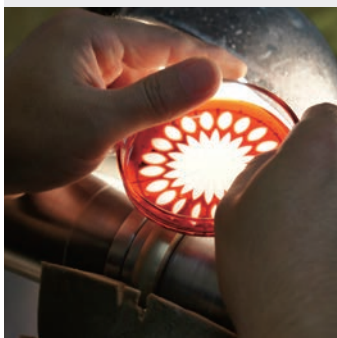
Language support	Japanese, English	Email	soutatsu@nisshin-kikinzoku.com	Representative	Kazuo Kamikawa
Name	Yugengaisha nisshin-kikinzoku.	Establishment	1964		
Address	1-3-13 Misuzit Taitou Tokyo	Products	Senza Fine		
		Tel	+81 3-5687-5585		



PRODUCT 042
TOKYO



HIROTA GLASS CO.,LTD.



Founded in Tokyo in 1899, Hirota Glass has established itself as one of the pioneers of Japanese Glassware. In recent years, Hirota Glass has created its own signature style through harmonization of European traditional glassmaking technique and Japanese artistry. While staying true to its classic designs and influence dating back to the pre-war period, Hirota Glass continues to push hand-crafted glass to its artistic limits.

1899 Kinta Hirota (1st generation) founded glass tableware sales. 1920-2002 Mr. Eijiro Hirota (2nd generation) expanded the business. Dedicated to the development of the glass industry in Tokyo. 2002-2007 Mr. Tatsuo Hirota (3rd generation) developed a new product with a focus on manual work. Contributed to the reconstruction of milky glass that was popular in the Taisho era. 2007 Tatsuaki Hirota (4th generation) became president.

COMPANY

Language support Japanese, English
Name HIROTA GLASS Co.,Ltd.
Address 2-6-5 Kinshi Sumida-KU TOKYO

Email hirota-g@hirota-glass.co.jp
Establishment 1899
Products Lid Choco (red only) There are 7 patterns.
Tel +81 3-3623-4145

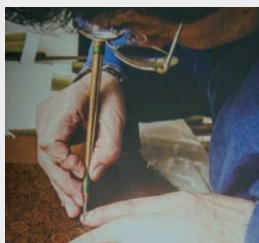
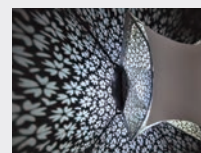
Representative Tatsuaki Hirota



PRODUCT 043
KANAGAWA



AKARI
CO.,LTD.



We have developed a lighting device that produces artistic and optical effects. In this lighting device, a single light source that emits light downward from the upper part of the illumination body mounted on the surface to be illuminated is supported by the illumination body, and has an uneven shape that reflects and scatters the emitted light. An irradiation surface portion having an inner surface and an irradiation surface partially opened are formed. The irradiated main body diffracts the scattered light reflected and scattered by the uneven surface of the inner surface, and together with the brightness of the diffracted light in the main body, a predetermined irradiated surface pattern creates a shadow of light and produces it on the bottom and side surfaces.

The biggest feature is that Ise paper pattern, which is a traditional Japanese craft, is faithfully reproduced using a photo-etching technique and metallized, and this metal plate is used for the irradiated surface.

We paid attention to the pattern used for dyeing, a traditional Japanese craft. The goal was to create a product that preserves this wonderful traditional Japanese technique and design. Focusing on Ise Katagami, which has a history of more than 1000 years, we aimed to create a work that can transmit the traditional Japanese kimono design to the world and introduce a wide range of Japanese traditional techniques. The point is how faithfully reproduce the delicate technique and design of hand-carving. The latest technique (photo etching) was used to solve this problem, and the detailed design was copied (metallized).

COMPANY

Language support Japanese, English
Name Akari Co.,Ltd.
Address 3-16-6-524,kuji,takatsu-ku,kawasaki-shi,kanagawa-ken,

Email k.akari@tbz.t-com.ne.jp **Representative** Kanji Takahashi
Establishment 2008
Products Miyabi
Tel +81 44-813-1038



PRODUCT 044
KANAGAWA



ARVORE
CORP.



“Mamagoto Shikki” was created by an inspiration I got when I saw my daughter playing with my wife happily and wanted to make my daughter happy with what I made. Parents and children can communicate with each other through the play house, and the bond between parents and children can be deepened. This “Mamagoto Shikki” was created through repeated studies with Mr. Kinoshita, a craftsman, to see if such a product could be made. We tried to make the bowls and dishes one by one with a roller, making them as lightweight and easy to hold as possible as we can so that even small children can play.

Arvore is making products with Japanese craftsmen that everyone can use the products for a long time.

We have experiences of product planning cultivated by the manufacturer and selling products in Japan and abroad. And, we love Japan, we have a strong feeling that we love making things.

Arvore works for contributing to the succession and development of Japanese culture.

What we care about when we make products is to make product specification suitable for modern life. This makes products with traditional techniques place much closer to your daily lifestyle.

COMPANY

Language support Japanese, English

Name Arvore Corp.

Address 2-46-17 Tsurugaminchoncho, Asahi-ku, Yokohama

Email info@arvr.jp

Establishment 2017

Products Mamagoto (Playing house) Shikki

Tel +81 45-489-3157

Representative Takashi Hagishima



PRODUCT 045
NIIGATA



MARUMI YASUDA KAWARA KOGYO CORPORATION



The demand for Yane Kawara (Japanese roofing tiles) has been decreasing year by year. This project was started to promote Kawara products by transforming our business scope from 'housing' to 'dining'. The project also aims at contributing local economy by highlighting the capability, competitiveness and uniqueness of the local firm like us. The project will hence keep up our traditional Kawara culture which has significant technical spec and artistic beauty. We designed the product by trimming weight as Kawara is likely to be heavy. Designers also try to form shape easy to be handled. The kiln exclusively designed for buring Kawara is used for the process of making 'Tsuki'. We needed to overcome the initial difference between making Kawara and dish particularly on the ratio of expansion and contraction and composition of glaze. 'Tsuki' is the product we offer the market after such long journey of production.

Yasuda Kawara has been handed down as a family business since Tempo era (1830 - 1844) of Edo period. Three Kawara makers which are in the extended family relationship came together to establish one new firm, Marumi Kawara Kogyo Corporation and started its business in 1980 mainly because we needed to survive a harsh competition in Kawara market against other producers coming from outside of Niigata prefecture. By introducing "Tunnel Kiln", a production system which enable us do mass-production, we established a business organisation to keep the tradition and culture of "Yasuda Kawara" that was born and raised in Niigata.

COMPANY

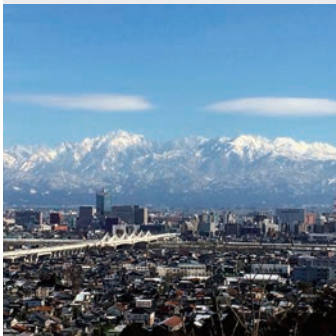
Language support	Japanese, English	Email	marumi@amber.plala.or.jp	Representative	Kazuto Endo
Name	Marumi Yasuda Kawara Kogyo Corporation	Establishment	1980		
Address	6130-1 Yasuda Agano City Niigata	Products	sake set		
		Tel	+81 250-68-3802		



PRODUCT 046
TOYAMA



GLASS STUDIO “SHOJI GUCHI-YA”



Toyama City is developing our municipal community as “Glass City Toyama”. I make works based on the concept of “gentle, soft and comfortable”.

A work that resonates comfortably in the heart.

I opened my factory to make my place in Toyama.

I would like to continue my creative activities in “Glass City Toyama”.

COMPANY

Language support Japanese, English
Name Glass Studio “Shojiguchi-ya”
Address 237-3 Furusawa Toyama-shi Toyama

Email shojiguchi_ya@mac.com
Establishment 2005
Products Hatsuri
Tel +81 76-436-3131

Representative Rikie Shojiguchi



PRODUCT 047
TOYAMA



MIYAZU
Co.,Ltd.



More than 80 years, we have been producing and providing key products for Japanese tea ceremony such as iron kettles and cast utensils. Sharing the aim of creating long life time products, we have worked with truly experienced craftsmen in our local town Takaoka and cast iron product creators in Yamagata Prefecture.

In 1938, Miyazu Co., Ltd has started its business as a wholesaler of kettles in Sengoku-machi which is a neighbouring local community of Kanaya-machi Historical Area known as the district of origin of Takaoka metal cast industry. As one of the few companies in Japan, who are professionals in casting tea utensils manufacturing, we are striving to contribute to the industry. We continue to disseminate "The beauty of Japanese handicrafts" to all generations in Japan and to the world.

COMPANY

Language support Japanese, English
Name MIYAZU Co.,Ltd.
Address 3-18 Sengokumachi, Takaoka city, Toyama

Email miyaz-sh@p1.tcnet.ne.jp
Establishment 1938
Products Kan nabe Iron liquer server Ume
Tel +81 766-24-4321

Representative Takeshi Miyazu



PRODUCT 048
TOYAMA



NAGAE LTD.



Based on the skills of craftsmen of Takaoka Copperware, modern technology, and fine manufacturing, we are developing various miscellaneous goods with designs that express the beauty of metal and find enjoyment in the life.

NAGAE Ltd., has been engaged in a multifaceted metalworking business for 60 years in Takaoka, Toyama, Japan. Starting with four craftsmen and limited working machines. The company went through tough times after the World War Two, and spurred technological innovations during the rapid economic growth years. While having a high degree of adaptability to changing times, we have manufactured a variety of metallic products and supported Japanese lifestyle.

COMPANY

Language support Japanese, English
Name NAGAE Ltd.
Address 278 Arayashiki, Takaoka-shi, Toyama

Email overseas@nagae.co.jp
Establishment 1954
Products Chinese teaware series "Madoka" tea set (1 pot, 1 server, 2 cups)
Tel +81 766-31-5633

Representative Yoichi Nagae



PRODUCT 049
TOYAMA



MATSUI SILK WEAVING CO., LTD.



In the beautiful world of silk, many hands are trying to preserve the tradition behind the scenes. The silkworms spinning cocoons bring us beautiful fabric, their lives being sacrificed in the process. Before, I was stuck on degrees and economic worth and not sure what I was searching for. But turning towards shike silk, I grasped upon an idea—if I was able to make something good with roots in home town (Johana), people would visit even this small town. Shike silk spins an important destiny, and I hope that its purity will reach many people. I hope to be innovative and give the craft something that can be passed forward for hundreds of years.

It has been said that the beginning of Johana silk textiles was 1573-1592. During the Edo Period, silk products sold in Johana and Komatsu were protected by the Kaga Clan as “Kaga Silk”. During the 1688-1704, silk textile sales flourished, and the products were sold to the large consumption area of Edo.

Bunjiro Matsui founded Matsui silk weaving.co.,ltd in 1877 and produced fabrics for Japanese clothing and “shike silk paper” paste Japanese paper affixed to “shike silk” for paper-covered sliding doors (fusuma).

“Shike Silk” is a woven fabric with unique knots pattern that uses cocoon thread made by two silkworms with a probability of 2-3%.

However, because there were the small knots, it could not be used for high-quality kimono fabrics. Instead, Bunjiro has opened up new possibilities for silk using “shike silk paper” paste Japanese paper on the back of “shike silk”.

COMPANY

Language support Japanese, English
Name Matsui silk weaving Co.,Ltd.
Address 3393,Johana,Nanto-city,Toyama

Email wataru@sikesilk.com
Establishment 1877
Products Shike silk products
Tel +81 763-62-1230

Representative Fumikazu Matsui



PRODUCT 050
TOYAMA



SHINICHI AMANO



“Raden glass” was developed as an original product utilizing the abalone shell technique that is characteristic of Takaoka lacquerware. When you actually add sake, the mysterious sparkle of Raden spreads, and depending on the shape of the cup, it spreads like a kaleidoscope. I hope this product will increase the number of people who are interested in Takaoka lacquerware.

Taking advantage of the traditional techniques of “Takaoka lacquerware” cultivated since its establishment in 1892, we are seeking new possibilities for lacquerware and working to create products that match modern living spaces and lifestyles. We are always developing products that keep in mind “if you use” and “if you buy”.

COMPANY

Language support Japanese, English
Name Shinichi Amano
Address 245, Haoka, Takaoka-city, Toyama

Email info@amanoshikki.com
Establishment 1892
Products Gold cup(kaleidoscope) cherry blossoms
Tel +81 766-23-2151

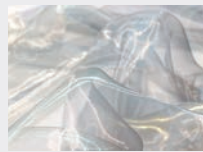
Representative Takahisa Amano



PRODUCT 051
ISHIKAWA



GENERAL INCORPORATED ASSOCIATION THE DRAGON ROUTE PROMOTION COUNCIL



This product is made from Japanese land, culture and technology. I hope this product will lead to regional revitalization by learning more about Japan and users get interested in Japanese land, culture, and technology.

Although it is a part of the tourism route of the Shoryu-do Dragon Route, we would like to increase the name recognition and contribute to the region.

COMPANY

Language support Japanese, English
Name General Incorporated Association The Dragon Route Promotion Council
Address Ishikawa-ken kanazawa-shi Ekinishihonmachi 2-12-37

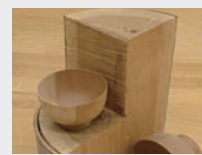
Email support@dragonroute.net **Representative** Kunihiko Tada
Establishment 2009
Products Japanese candles
Tel +81 90-9768-7379



PRODUCT 052
ISHIKAWA



KANORYU Co.,Ltd.



We keep making products to spread new tableware to the whole world while protecting the technology and tradition of Ishikawa Prefecture where we were born and raised.

Easy to use in a modern style with a focus on products made using Ishikawa Prefecture's unique materials and coating techniques.
It is based on the concept of a simple and daily use tableware.

The company was founded with the desire to make lacquerware with cheap more usable.

The wooden tableware that has long been familiar to us is the "Japanese heart".
We continue to make tableware that you can continue to use in the every day.

COMPANY

Language support Japanese, English
Name KANORYU Co.,Ltd.
Address R1-410 Haseda Town Yamanaka Spa Kaga City Ishikawa Prefecture

Email info@kanoryu.co.jp
Establishment 1959
Products Dishwasher compatible KAGURAWAN
Tel +81 761-78-1838

Representative Nobukiyo Kano



PRODUCT 053
ISHIKAWA



KAGAMIZUHIKI TSUDAMIZUHIKI ORIKATA



About a century ago, Sokichi Tsuda (first-generation master of Kaga Mizuhiki) developed three-dimensional wrapping and knotting techniques, elevating the craft to an art. His distinctive techniques and the gracefulness of his works have been highly praised, and he has received many honors, including presentation of his work to the imperial court. During the time of the second-generation Ume Tsuda, mizuhiki was designated as a rare traditional craft of Kanazawa. Kaga Mizuhiki techniques have been handed down to the fifth generation while preserving the essence of the craft, and at the same time further developing it.

COMPANY

Language support Japanese, English
Name kagamizuhiki tsudamizuhikiorikata
Address 1-1-36, Nomachi, Kanazawa Shi, Ishikawa Ken, 921-8031

Email rokusuketuda@yahoo.co.jp **Representative** Hiroshi Tsuda
Establishment 1915
Products mizuhiki hair accessory
Tel +81 76-214-6363



PRODUCT 054
FUKUI



STYLE OF JAPAN,
INC.



STYLE OF JAPAN offers the contemporary japanning chopsticks and tableware, standing on its 400-year tradition of production town history. An our signature ECO friendly chopsticks brand [HASHI] contributes to “The Realization of a Low-Carbon Society” and sustainable production cycle, being a scheme to realize Co-existence and Co-prosperity with nature and human.[HASHI] presents the essence of traditional JAPAN’s sense of beauty and innovative techniques with appropriately adopted ethical material, functional utility and elegant design.

The vision of STYLE OF JAPAN, Inc. is “Telling story of HASHI based on its 400 year histories to the world”. We are now on the way and shall contribute the realization for Low-Carbon Society through our unique and eco-friendly product line ups.
STYLE OF JAPAN started business in New York in 2003 to introduce the “HASHI” culture of Japan into the US, keeping the 4th generation pride of traditional family business of chopsticks. “HASHI”, which is the formal way to pronounce in Japanese language, we have the dream someday people in the world call same way not chopsticks like people call “MANGA” not comics as well.

COMPANY

Language support Japanese, English
Name STYLE OF JAPAN, INC.
Address 7-4 Nbuilding 3F Otecho OBAMA, FUKUI JAPAN9170078

Email pr@styleofjapan.net
Establishment 2003
Products OEDO-BLUE- OEDO-GREEN-
Tel +81 770-52-1835

Representative Kazuo Omori



PRODUCT 055
YAMANASHI



GEN MAEDA & CO.,LTD.



Edo era, has been described as the ultimate in chic “Kai silk”.
Gen Maeda & Co., Ltd. which inherited the tradition and passion, Along with the changing times, thinking, choosing, and polishing skills, We started a history of making new textiles. That looked into the future for hundreds of years, Nostalgic, kind, supple, It was a textile production that thought of someone close to me.
I have been walking along with Japanese kimono culture Fujiyoshida City, Yamanashi Prefecture, the production area of silk fabrics.
From here, it leads to the world and the future.
The story of our continuation begins.

It is produced on land blessed with clear air at the foot of Mt. Fuji and clean water stored by Mt. Fuji. Founded in 1921 (Taisho 10), Tokyo Olympics 2020 is the 100th anniversary. The history of working with various materials since starting with silk umbrella fabrics is the cornerstone of today's organic cotton products.

COMPANY

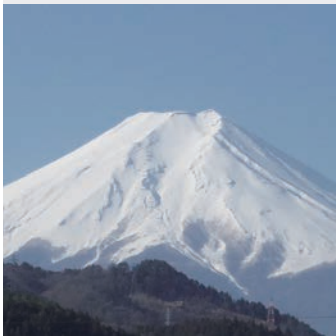
Language support	Japanese, English	Email	info@maedagen.co.jp	Representative	Ichiro Maeda
Name	Gen Maeda & Co.,Ltd.	Establishment	1921		
Address	2-25-24 Shimoyoshida Fujiyoshida Yamanashi	Products	Omamori-towel-Yabanegara		
		Tel	+81 555-23-2231		



PRODUCT 056
YAMANASHI



YAMAZAKI ORIMONO



Finished with a lot of ingenuity to bring out the attractiveness of the material.

Even if there is no word, it will be transmitted if you touch it. I believe that there is no border in the sense that the skin and fingertips feel “comfortable”.

Founded in Yamanashi as a brokerage company that has been active in the textile industry for over 400 years.

Utilizing various processing technologies in Japan and overseas, we have developed a variety of high-value-added products and used a variety of yarn materials to pursue originality not found in other countries and other countries, and have focused on fabric material development.

The products that are currently commercialized include those that use a part of “Morphotex” from Teijin Fibers Ltd., those that use the traditional industry of Gifu “Mino Washi”, and that have been handed down to this area of Mt. Fuji. There is a reproduction of Kai silk.

COMPANY

Language support Japanese, English

Name yamazakiorimono

Address yamanashi-ken minamitsuru-gun nisikathura-machi onuma 1697

Email ym-tex@peach.ocn.ne.jp

Establishment 1916

Products muffler

Tel +81 555-25-2217

Representative Yasuhiro Yamazaki



PRODUCT 057
YAMANASHI



DELTA PROJECT
CO., LTD.



Our company is placed in Yamanashi pref. where is rich of nature, we look up Mt. Fuji every single day. We use very old fashioned shuttle looms which my father settled almost 40 years ago. Those looms work slowly but make very fine fabrics. So we intend to make good and rare products against mass production and mass consumption. Textile industry in Yamanashi is local industry for more than century. But nowadays some people gradually give up their family business in this local industry. We try to encourage this industry for our life and promote our products to those who visit Japan from the world.

COMPANY

Language support Japanese, English
Name Delta Project Co.,Ltd.
Address Yamanashi pref. Nishikatsura Onuma 1784

Email info@138etex.work
Establishment 2000
Products "Z" weaved stole
Tel +81 555-25-2002

Representative Takeshi Kobayashi



PRODUCT 058
SHIZUOKA



MAG DESIGN
LABO.



What is that feeling of living with loved treasured mementos? Yet, nothing is more inspiring than to see old things, new, in their innate beauty. Things become fresh looking when we forget the artisan's purpose. With the introduction of new trends, old products lose their daily usefulness. The majority of new creations also fade away with the passing of time. It is apparent, and yet some products retain an innate spirit of their own. Because we have a creator's spirit, we won't stop creating. Having an appreciation of traditional design is not our focus. We create something new and unique for the first time. We are searching for designs from the classic to contemporary to find out why some items hold lasting value and others do not. There must be some reason or meaning behind this. We want to make a standard and create products that will have long lasting beauty for 10, 50, or 100 years. "Knot" is a journey to find and create a new lasting standard.

We come a unique way of making things up to now. It starts from the production of oil painting, product planning in furniture manufacturers, furniture manufacturing in Hokkaido, and the way has led us to the current design office.

In its diversified activities, we have always looked for "better than now" but not been hung up by anything. It is not only the detail of the design. We believe that our concept of design comprehends business organisations and sales promotions, and even larger institutions such as business cycles and systems. We believe that there is no boundary, genre, or category between the products or type of business, all those elements are the design that moves someone emotionally. So our office Mug will continue to work with all of them.

COMPANY

Language support Japanese, English

Name mag design labo.

Address 1-27-5 Mochimune Suruga-ku Shizuoka 421-0122

Email hana@mag-labo.net

Establishment 2008

Products Craft Products

Tel +81 54-270-7226

Representative Keita Hanazawa



PRODUCT 059
SHIZUOKA



HIKI MONOJO 639 CORPORATION



639 is the address of our woodwork factory located at deeper side of Shimizu, Shizuoka. We named our factory 639 because we would like to deliver emotion and happiness through our goods from this place. We can make anything that have round shape by using woodworking wheel and lathe. As we are very few active woodworkers who had more population in decades ago, we are exploring the way of promoting Shizuoka Hikimono (woodwork making material round shape) with our best effort.

COMPANY

Language support Japanese, English
Name Hikimonojo639 Corporation
Address 639 nakagochi shimizu-ku shizuoka

Email moyocami@hikimonojo639.com
Establishment 2015
Products cakestand
Tel +81 54-396-3883

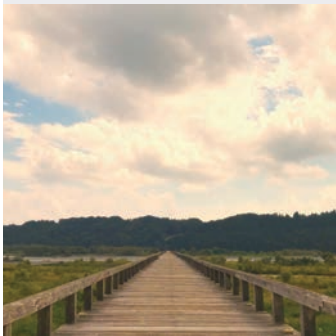
Representative Toshifumi Momose



PRODUCT 060
SHIZUOKA



NISSHO KOGYO CO.,LTD.



“Beauty” is inherently a value that is not affected by the color of eyes and the color of the skin, culture and faith, male and female sex. And “food” is the same, happy time everyone in the world has. PROGRESS proposes new, exciting and delicate new lifestyles by removing various boundaries and dressing up food.

The birth begins with a single glass plate. Glass specimens that are casually thrown away at the production site. One day, the spirit of a single employee who sees the fascinating shine begins. The days when I want many people to know the beauty of “color of light” that I have never seen before. The joy I received from the glass plates I met at that time is the same as when I drank a delicious wine, which leads to the birth of the glass.

COMPANY

Language support Japanese, English
Name Nissho Kogyo Co.,Ltd.
Address 528-1 Nakagawa Shimada Shizuoka

Email nissho@trad.ocn.ne.jp **Representative** Hiroo Konagai
Establishment 2010
Products Jewelry • Glass
Tel +81 547-38-1414



PRODUCT 061
GIFU



YAMAI POTTERY CO.,LTD.



While there are many industrial machines that can be mass-produced in the world, we stick to the traditional methods of the old days and make everything carefully from hand to hand. Therefore, unlike other companies, mass production and speed production are not possible, but we will deliver warm products unique to handmade. In addition, the shape, glaze and color of the same product are slightly different, and there is only one product that is exactly the same in the world.

The founder, Shinichi Ito, was just striving for manufacturing based on the motto of "making good products". In the past, craftsmen who were limited during the main baking had to check the temperature and humidity at that time and the color of the gas at the time of combustion and adjust the amount of gas. It was.

COMPANY

Language support Japanese, English

Name YAMAI Pottery Co.,Ltd.

Address 1680,Tsumagi-town,Toki-city,Gifu

Email hiron.ito0122@gmail.com

Establishment 1967

Products sake set

Tel +81 90-7031-0813

Representative Hisamitsu Ito



PRODUCT 062
GIFU



OKADA BOUSUI FUTEN



We are particular about natural materials, handcraft and everyday use. We use persimmon tannin from Gifu prefecture. We apply it to 100 % cotton fabric in our workshop, and repeat the process of sun exposure for about 1 week 3-13 times to make it rich brown. Persimmon tannin chemically changes to dark brown when it touches iron. Using this phenomenon, patterns are put on or dyed on the entire surface. The bag are carefully sewed with a sewing machine and carefully finished one by one.

During the Edo period, our workshop was producing raincoat with Japanese paper of persimmon tannin dyed. In 2002, we reunited with the producers of persimmon tannin produced in Gifu Prefecture. And then, we made bag of persimmon tannin dyed using the technology of waterproof fabric processing industry.

COMPANY

Language support Japanese, English
Name OKADABOUSUIFUTEN
Address 3-77 Hayashimachi Ogaki-City Gifu

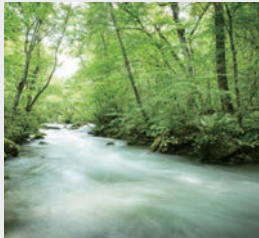
Email okadabousuifuten@arion.ocn.ne.jp **Representative** Gene Okada
Establishment 1750
Products Heavy Duty Tote Bag
Tel +81 584-78-3696



PRODUCT 063
AICHI



ADERIA
CO.,LTD.



What is the color of Japan?

Cherry blossoms in spring, festivals in summer, the turning leaves of fall, and the white landscapes of winter.

We aspire to bring you the profound colors of the Japanese seasons in glass.

So we create hues in the thousands to sustain our attention to detail.

Tsugaru Vidro is born within the red, blazing, 1500°C heat of the furnaces.

The artisans complete each piece with a smoothness that can only be achieved using a blowing iron with refined skill and ability.

With emphasis on the Japanese seasons, Tsugaru Vidro captures infinite expressions like the changing scenery through its color combinations.

We hope everyone enjoys joyful meals and relaxing moments with colorful, charming Tsugaru Vidro.

Hokuyo Glass, a glass manufacturer that makes Tsugaru Vidro. Established in Aomori in 1949, fishing floats were the mainstream at that time. Eventually, they are replaced by plastic. In 1982, we began to produce crafts such as vases.

Since then, Tsugaru Vidro has become one of the most beloved glass tableware in Japan.

COMPANY

Language support Japanese, English

Name Aderia Co.,Ltd.

Address 1880 Kawai Iwakura Aichi

Email tsuboi-m@ishizuka.co.jp

Establishment 1949

Products NEBUTA Tumbler

Tel +81 587-37-2019

Representative Teruyuki Machino



PRODUCT 064
AICHI



KITA MURA JAPAN INC.



This is a joint project of three companies focusing on creating new value of natural resources using things that go wastes usually such as grapes after wine making, remnants of reeling, and used wine cork. This project is not a simple conservation activity, but is for appealing the modality of manufacturing. We believe not only reducing but reusing things would make the earth and people happier.

I was searching new materials for pillow and one of my acquaintances from my work introduced TOKYO CORK PROJECT, the cork recycling company. I contacted them immediately. While reviewing their samples at a trade show, I came up with another random idea for the project and visited KURAKIN's booth. Turned out that the two companies had been on a TV program at the same time, which made the two hit it off together right away and started the project with us.

COMPANY

Language support Japanese, English

Name Kitamura Japan Inc.

Address 16-2 Kosaki Tokushige Kita-Nagoya Aichi

Email ksk@kitamura-japan.co.jp

Establishment 1923

Products Corticea E Vinho

Tel +81 568-23-0213

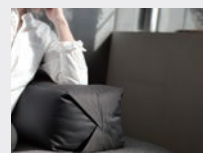
Representative Keisuke Kitamura



PRODUCT 065
AICHI



NIWA FUTON



The traditional techniques that Niwa Futonten has inherited from its founder in the Meiji Period have been passed down unaltered over the years to the present day as a matter of course. These excellent techniques developed by our predecessors should not be tampered with. Niwa Futonten wants to reintroduce the comfort of futons made of cotton and floss silk (much cherished in the original Japanese culture) into present-day life by adjusting their style and value from time to time. We would also like to apply our inherited tradition to today's manufacturing techniques based on our history of production in the Bishu region.

The cotton-beating family business founded by Tadashichi, who died in 1887 (Meiji 7), began retailing as "Niwa Futonten" in 1933. The knowledge and skills underpinning the whole process, from cotton-beating to futon production, make up the traditional techniques that have survived to this day as Niwa Futonten. Our particular focus on the blending ratio of different types of cotton, a tradition passed down from our time as a cotton beater, is something unique to Niwa Futonten. The current fifth-generation master now managing the company is not only turning out futons but also trying out new products using futon technology, such as pillows and sofas.

COMPANY

Language support Japanese, English
Name NIWA FUTON

Address 116, Kawadacho, Atsuta-ku Nagoya-shi, Aichi

Email niwa2004@gmail.com **Representative** Masayuki Niwa
Establishment 1958
Products KYO-SOKU
Tel +81 52-671-6473



PRODUCT 066
AICHI



TOKAI SLOWTOY CLUB



We are particular about the Tokai area and our name is Tokai Slow Toy Club. When it extends to the Tokai area not only Nagoya, there will be an increase in attractive products such as Mikawa cotton children's clothing in Mikawa, baby brushes in Toyohashi and wooden toys in Gifu. And then being loved by local community that we have is a great strength to go other area such as Tokyo and the world.

"Slow toy" is a coined word that I made.

"Slow", which means the same as slow food, and is a "toy" that represents a toy, but it refers to kids products for children 0-12 years of age and general products for children. Like the slow food of local production for local consumption of food, it consists of four elements such as "local production for local consumption of goods", and this club introduces and develops.

The important thing for children is safety first. Though we cleared an official toy standard, we don't only focus on it. We have also its own higher-grade safety such as beeswax 40% and bittern.

COMPANY

Language support Japanese, English

Name Tokai Slowtoy club

Address 1-116-1 #303 Horagai MidorikuNagoyacity Aichi

Email mitsu@slow-toy.com

Establishment 2015

Products Oiwai beeswax crayon

Tel +81 52-878-8303

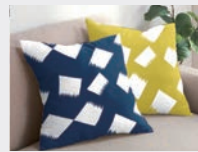
Representative Mitsuo Akita



PRODUCT 067
SHIGA



WESTY INDUSTRIES Co.,LTD.



Aisho-cho is a town where “Omi-jofu” flourished due to the hemp fabric technology and rich water resources that were handed down from Kyoto during the Muromachi period, and the activities of Omi merchants.
 “Nonosute store” was one of the stores that produced Omi-jofu and was reputed for its beautiful multicolored pattern.
 The Nonosute store was closed in 2002, and its 120-year history closed.
 With the desire to let more people know about this beautiful pattern and traditional culture, our company which has a factory in the same Aisho town has helped to breathe new life into “NONOSUTE”.

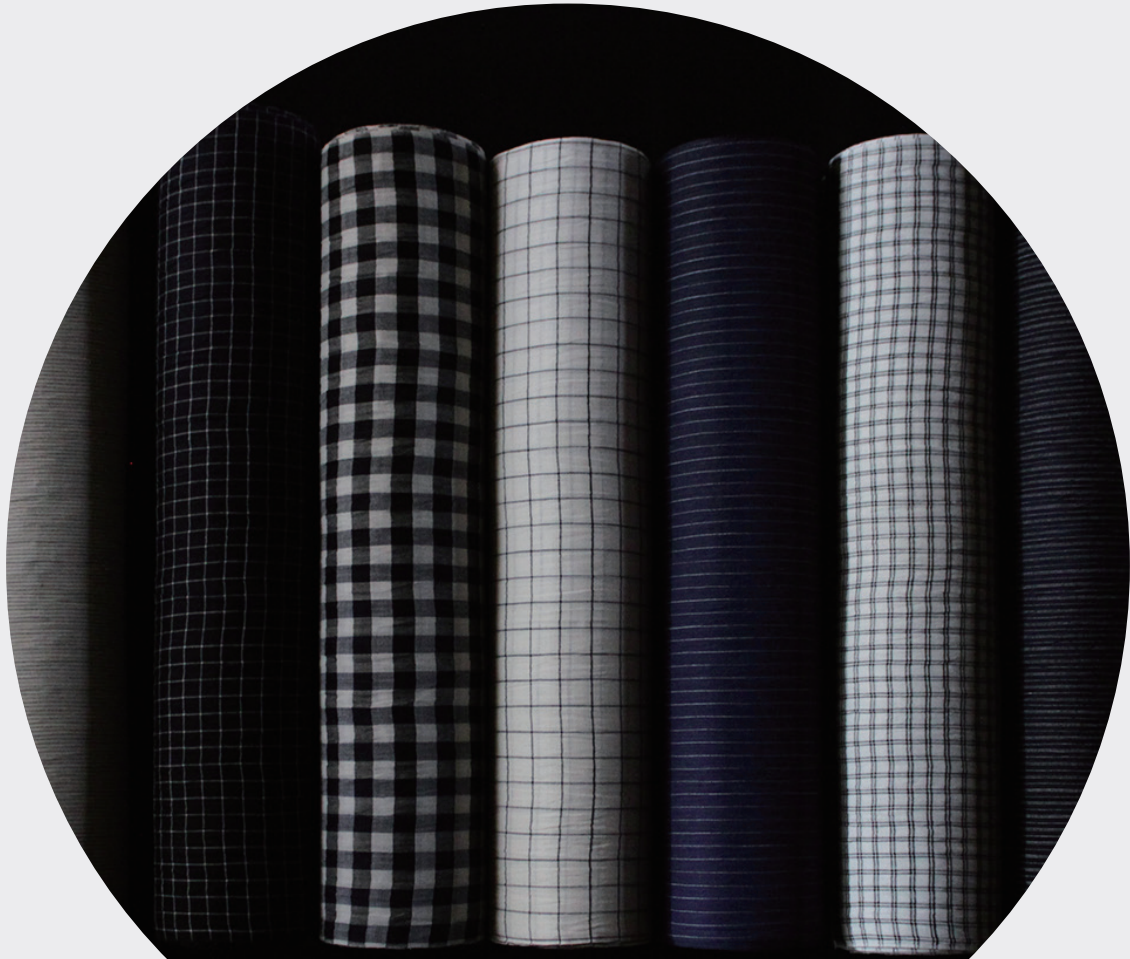
The president’s grandfather, Masajiro Nishimura was in Marubeni’s work in China during the war and was unable to return home for a long time after the end of the war so his wife Mitsuko started sewing duvet covers to make a living.

COMPANY

Language support	Japanese, English	Email	westys@titan.ocn.ne.jp	Representative	Tadashi Nishimura
Name	WESTY INDUSTRIES Co.,Ltd.	Establishment	1946		
Address	110 ichi ,Aisho-town,Echi-gun,Shiga	Products	NONOSUTE Cushion cover		
		Tel	+81 749-42-2155		



PRODUCT 068
SHIGA



YAMA NISHI WARPING FACTORY



I am a craftsman engaged in hemp fabrics in a city close to Lake Biwa and make warps (stripes) as a business.

The work of making is a feeling that you can't escape like falling in love unexpectedly. Whether you're full of beautiful things or something you don't want, you can't help doing it.

While the 500-color pencils of a certain company are too much for many people, there are no boundaries between tradition and innovation, art and craft, and a stripe for those who are very limited. Through this, I would like to face each other in this world.

At the time of its founding, warping was a part-time job or an elderly job, and of course there was no company that specialized in it. At that time, each company had its own warping department when they established an independent warping company that had no specific parent company in order to specialize, reduce raw material loss, and respond to small-lot, multi-product production. The surroundings said that it would never go well. I am fortunate to have been able to continue my work. I would like to express my gratitude and continue to face each work seriously.

COMPANY

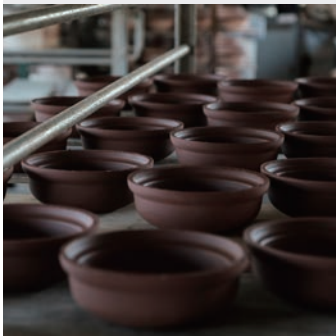
Language support	Japanese, English	Email	yama24_moritaka@yahoo.co.jp	Representative	Moritaka Yamanishi
Name	Yamanishi Warping Factory	Establishment	1990		
Address	199, Notogawa-cho, Higashiomi-Shi, Shiga-Ken	Products	0.01(Summer Kimono textile)		
		Tel	+81 748-42-3036		



PRODUCT 069
MIE



MOLA TURA CO.,LTD.



Yokkaichi has an earthenware pot called Banko Yaki that lasts for 300 years. A product that combines Yokkaichi's traditional crafts, Banko Yaki, and our cutting technology. This product is a result of trial and error.

I began to want to be pleased to deliver products that utilize our technology to customers.

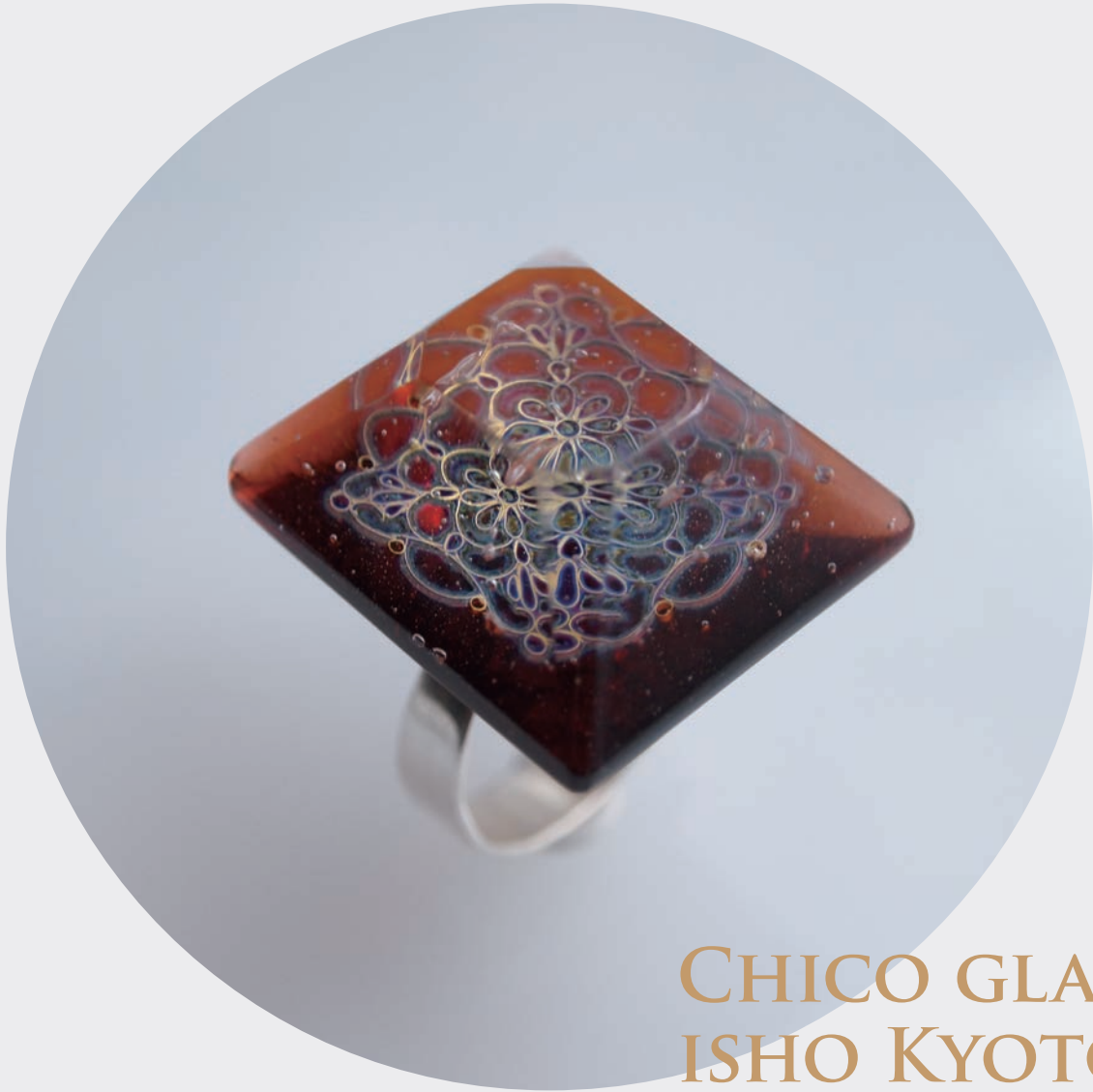
COMPANY

Language support Japanese, English
Name MOLATURA Co.,Ltd.
Address 1245, Hironagacho, Yokkaichi Shi, Mie Ken,

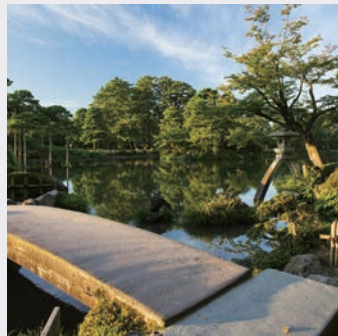
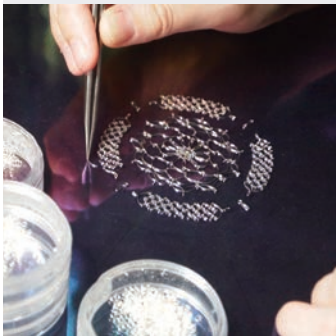
Email molatura@molatura.com **Representative** Takuya Yamazoe
Establishment 2018
Products bespo
Tel +81 59-336-5321



PRODUCT 070
KYOTO



CHICO GLASS ISHO KYOTO



A scrap occurs when producing silk thread produced from silkworm. Effective use of valuable materials, and by combining with glass materials, the artist shows beautiful colors and lights.

Currently, the price of glass products has become a problem and not suitable for demand. Domestic glass artists are technically superior but it's not recognition and price does not match. We are doing activities to improve the situation in the glass industry.

COMPANY

Language support Japanese, English

Name Chico glass isho Kyoto

Address 2-1 Kamiyanagihara Gonokuchi Ujitawarachou Tsuzuki-gun Kyoto

Email chicoglass@outlook.jp

Establishment 2018

Products type red, purple, blue

Tel +81 90-1904-9281

Representative Koki Nakayama



PRODUCT 071
KYOTO



ISM



Kawada cho in Sabae City, Fukui Prefecture is a major production area with a history of 1000 years of lacquerware production. We plan and manufacture products by adding modern interpretation to traditional methods. We try to make products that add a sense of gentleness to the daily life by incorporating modern sensations, such as lacquerware that can be used in everyday life, and dishes which can be used for dishwashers that use domestic wood made of urethane paint.

The company is established in 1856. We have produced wooden crafts and lacquerware through 3 generations. We would like to increase the value not only as a container but also as a work of art, and to use the tradition of the technology we have cultivated for Japanese culture.

COMPANY

Language support Japanese, English

Name ism

Address 10-1-601 Omiyahigashiwakidai cho Kitaku Kyoto city KYOTO

Email maasaa999@gmail.com **Representative** Masamichi Ishimoto

Establishment 1856

Products Gesshin

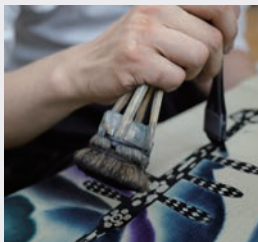
Tel +81 90-3677-9653



PRODUCT 072
KYOTO



ISSIN KOUBOU



Blurred dyeing is said to last 1200 years. During the Heian period when national culture was suspended and the culture of the country was gorgeous, it was said that it appeared as a Japanese expression such as “Asaborake” and “Oboro”. Using the blur dyeing, we use the expression “wind” that Japanese value. It is said that there are 2000 words with wind. Not only that, the unique Japanese sensibility that expresses the movement of the mind and the flow of society as “wind” has certainly taken root in the present age.

Kyoto is the capital city of Japanese people.

I would like to continue to dye soft and supple blur dyeing, as can be seen in the word “Hannari”.

Even when the Meiji era changed, when there was a difference in the status between the Chinese and the commoners, the first generation tried to convey the feelings to a woman who fell in love with the day of the festival, and was drawn to a painter's house. However, there was no way to deliver. At that time, a kimono craftsman in the neighborhood learned that he was paying kimono to the Chinese, and he was apprenticed.

COMPANY

Language support Japanese, English

Name Issin koubou

Address 1-197 Mibu Shinmeicho, Nakagyo-ku, Kyoto

Email issinkoubou@gmail.com

Establishment 1868

Products Sunny rain umbrella dyed by the wind

Tel +81 90-5132-6511

Representative Isshin Kato



PRODUCT 073
KYOTO



TOHGORO CO.,LTD.



I developed these products on the theme of “table entertainment”. This series will be a collaboration between designer Kazushige Miyake and ceramic artist Nobuyuki Ogawa. This brand expresses a modern and avant-garde worldview. When a plate and a box plate are arranged, the semicircle is connected. This expresses the edge connection. Stacking the trays like a tower while shifting the trays will also attract attention at home parties.

I am mainly engaged in retail store management of Kyo-yaki and Kiyomizu-yaki. At the same time, I am engaged in product planning and development and manufacturing wholesale businesses.

I plan and propose original products for customers under the theme of “Creating new value with customers”.

I will inherit the tradition of Kyo-yaki and Kiyomizu-yaki and customize them to the contemporary life style, and create a new Kyo-yaki and Kiyomizu-yaki style.

COMPANY

Language support Japanese, English
Name TOHGORO Co.,Ltd.
Address 539 HIGASHI-6 CHOME, GOJOBASHI,
HIGASHIYAMA-KU, KYOTO

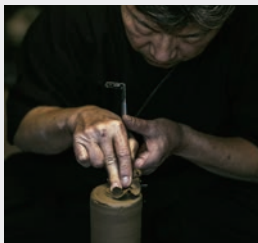
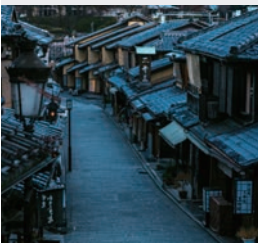
Email info@tohgoro.co.jp **Representative** Koji Azai
Establishment 1992
Products Mini bowl
Tel +81 75-561-0056



PRODUCT 074
KYOTO



A-STORY INC



Tea ceremony is one of the customs that existed in Japanese life style.
Before the manners, I wanted to take the time of tea into fashionable style, and we developed the portable tea set with the craftsmen who made the usual tea ceremony equipment of Kyoto. The biggest feature is that the teapot, it's made into a portable size and added to the set. In the suburbs wait for the boiling time. We offer a luxurious experience in today.
The teapot is made in small size.
But the craftsmanship is made by making the sand mold, exactly like the traditional manufacturing method.

Kiwakoto is a brand that develops, manufactures and sells premium products based on craftsmanship. We are working with traditional craftsmen in Kyoto as a partner, adding their own usability, function and beauty through our modern art direction.
We pick up on and create trends, creating products with our own unique point of view and editing power that people don't just think of as something that "will do" but as something that they "can't do without".

COMPANY

Language support Japanese, English

Name A-STORY Inc

Address 40-3 Saiinkotobuki-cho, Ukyo-ku, Kyoto

Email info@kiwakoto.com

Establishment 2018

Products Fragrance bottle(for the car)

Tel +81 75-874-3820

Representative Kazuaki Matsushima



PRODUCT 075
KYOTO



KO-EI KOUGEI CO.,LTD.



Kinsai Yuzen is a Japanese traditional craft technique that draws patterns with gold, silver, platinum foil and metal foil. This hand painted Yuzen technique has been passed since the Heian period and has a history of about 1000 years. The Kinsai Yuzen wallet is coated on a kimono or obi fabric from hand painted gold and silver foil, and is designed to be resistant to friction and used for a long time and is light and durable. These products are produced at the workshop of the artist who received the “medal with Yellow Ribbon”. I would like to pass on the traditional techniques that I have cultivated to the next generation and let the world know the outstanding craftsman skills and beauty.

COMPANY

Language support Japanese, English
Name Ko-ei Kougei Co.,Ltd.
Address 24 hakurakuchou nishinokyo nakagyo-ku Kyoto-city Kyoto prefecture

Email y-wada@wada-mitsumasa.com **Representative** Mitsumasa Wada
Establishment 1962
Products kinsai yuzen wallet
Tel +81 75-463-1996



PRODUCT 076
NARA



BAN INOUE
LTD.



It is not until you actually wear something made with the fabric that you truly grasp the beauty of its breathability and pleasant feel, characteristics that are supported by Japan's traditional life and customs.

The CAYA clothing is very comfortable which means it is sought after not only in Japan but the world over.

For all these reasons, I really hope I can continue to convey the wonderful nature of Nara's mosquito net fabric.

While aligning with the trends of the times, we had inspired by Japan's original sense of The spirit of wabi-sabi (aesthetic sense in Japanese art emphasizing quiet simplicity and subdued refinement) As well as colors that have expressed the four seasons.

We want to assimilate the eternal sensibility of the Japanese people into modern life and keep passing it on to the future.

We express it with 3 things.

Such as manufacturing goods made of linen and cotton, running healthy restaurants and cafe, and photograph by our founder Hakudo Inoue.
Each pieces are ourselves, and sensible Japanese life style.

COMPANY

Language support Japanese, English

Name BAN INOUE Ltd.

Address 223 Kawakami-Cho Nara City Narapref

Email c-hayashida@asa-ban.com

Establishment 1988

Products CAYA SHAWL LARGE

Tel +81 742-23-2850

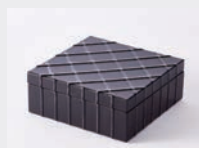
Representative Chika Hayashida



PRODUCT 077
WAKAYAMA



KISHU PLUS LLP



CRAFTSMANSHIP AND MODERN TECHNOLOGY

KISHU+ is a new Japanese lacquerware brand from Wakayama prefecture Japan. Kishu lacquerware is one of the four major lacquerware producing areas across Japan together with Aizu, Yamanaka and Echizen.

Historically, aiming more easily use of lacquerwares, Kishu lacquerware is continuing to incorporate modern technologies earlier than other local producing areas.

Keeping great respect for traditional hand craftsmanship, we are challenging to go forward with more liberal approach and incorporating modern technology.

These things aren't a replacements for hand craftsmanship but a challenge to further extend it.

Yoji Hashimoto ; the president, Hashimoto Shitugei Co.,Ltd; strongly wanted to realize the following three dreams. "I want to enhance Kishu lacquerware branding and let the market and consumers know more about its wonderful value." "I want to export attractive new Kishu lacquerware products to overseas markets." "I want to launch a new business with great potential in the future and pass it on to the next generation." Four companies came together to make his dream come true.

/Hashimoto Shitugei Co.,Ltd, Gold powder lacquerer(Maki-e), Yoshihiro Ohashi,

/Nakanishi Lacquerware Co.,Ltd, Lacquerer,Takuji Nakanishi,

/Shimayasu Hankougei Co.,Ltd Wood Turner, Keisuke Shima, and

/Yamaga Japan Lacquerware; Lacquerer, Yuichi Yamaga,

Four "young craftsmen" formed a team and the new brand "KISHU+" is launched in collaboration with TAKT Project.

COMPANY

Language support Japanese, English

Name KISHU Plus LLP

Address 85 Hatayashiki Nishi-no-cho, Wakayama-city, Wakayama prefecture

Email info@kishu-plus.jp

Establishment 2019

Products TOGI

Tel +81 90-6237-6208

Representative Takemi Senda



PRODUCT 078
OSAKA



YUME SHOKUNIN Co.,LTD.



Osaka is famous for manufacturing. Number one for manufacturing for toothbrush as well. We manufacture MISOKA toothbrush in the town. All the toothbrush goes through many checking points and be hand finished by artisans. You can feel the unique smoothness on your teeth. MISOKA collaborate with a local dentist and university to study. We have critical results that help remineralize on the teeth better than the high concentration fluoride. Brushing teeth and protect with moisture, MISOKA provide people a simple way with advanced mineral coating technology to live healthy life.

Mr. Yohei Tsuji started YUMESHOKUNIN CO., LTD in 2007. MISOKA toothbrush has been sold more than 4 million in Asia and around the world. He developed mineral coating technology to reserve safe and effective mineral for 30 days. After developing his products, he had more difficult time to sell them. People did not understand high function toothbrush. He never gave up to explain one by one. Then, it started to good feedbacks and people repeated to use MISOKA. Even today, Mr. Tsuji still passion to create products to do hand finish by artisans.

COMPANY

Language support	Japanese, English	Email	sales@misoka.biz	Representative	Yohei Tsuji
Name	YUMESHOKUNIN Co.,Ltd.	Establishment	2007		
Address	3-14-13 Hanjo, Minoh city, Osaka	Products	MISOKA		
		Tel	+81 72-720-7703		



PRODUCT 079
OSAKA



SEIKO TRADING CO.,LTD.



Sakai forging knife is made to draw the original characteristics of steel to the maximum by the craftsmen. CHOYO is produced by the master craftsmen in Sakai from forging to sharpening and create the astonishing cutting performance.

The work of the top craftsmen also allows “easy care”. The perfect distortion-free blade gives sticking-like sharpening on the whetstone. Just a little sharpening brings back the sharpness. The package is designed to express the CHOYO's attractive beauty and functionality. It is offered to you in a special-made white box of Japan paper.

Since our founding in 1926, we have been producing and selling kitchen knives under “SAKAI KIKUMORI” brand. It is said that over 90% of Japanese chefs use kitchen knives of Sakai origin because of their high quality and long-lasting sharpness. Our knives are also used by many chefs, and the knife developed by reflecting the voices of the professional chefs are CHOYO series. CHOYO knife is a masterpiece forged and sharpened by the top craftsmen carefully, so it is easy to make daily maintenance and keeps the sharpness longer. In addition, we are particular about the appearance of the knife and the blade surface is brilliant mirror polishing. We will appreciate it if you use CHOYO series knives and feel its high quality.

COMPANY

Language support	Japanese, English	Email	s.koda@seiko-trading.com	Representative	Akira Koda
Name	Seiko Trading Co.,Ltd.	Establishment	1984		
Address	2-2-33 Shukuyacho Higashi, Sakai-ku, Sakai-city, Osaka	Products	CHOYO		
		Tel	+81 72-222-5740		



PRODUCT 080
OSAKA



FUKUROYA TOWEL & CO.,LTD.



We create towels dyed from vegetables, brewed wine and craft beer made in the Osaka area.

We use raw materials that are no longer needed, poorly shaped vegetables, or things that are no longer needed after brewing.

Of course, we are also pursuing ease of use and functions, so that people who receive gifts will be happy and surprised.

Our company was founded in 1926 (Taisho 15).

In 1965, the factory was burned down. We introduced 20 latest jacquard looms. And we developed a woven fabric of bag woven towel jacquard.(fukuro-ori towel)

These technologies are the basis of our technology.

COMPANY

Language support Japanese, English
Name FUKUROYA TOWEL & Co.,Ltd.
Address Osaka pre.izumisano city asahi-tyo 3-37

Email kenji@fukuroya-towel.com
Establishment 1926
Products Wine Towel, Craftbeer Towel, Muku Towel, Matcha Towel
Tel +81 72-462-2288

Representative Noboru Fukuroya



PRODUCT 081
OSAKA



TOYO STEEL
CO.,LTD.



KONSTELLA, which was announced by Toyo Steel Corporation, a company manufacturing and selling various tool boxes and the like, is a modern version of the mountain-shaped tool box that won the Good Design Long Life Design Award, and is embodied through a crystallization of techniques cultivated in the Kansai region. This “tool box” enables storage and easy transportation of various tools essential for modern-day business, such as laptops and tablets, and supports constantly-diversifying business scenes.

We contribute to society by creating new values (convenience, comfort, value for customers, creation of employment). We provide products that ensure customer satisfaction, and longterm use.

COMPANY

Language support Japanese, English
Name TOYO STEEL Co.,Ltd.
Address KANO 4-8-13 HIGASHIOSAKA, OSAKA

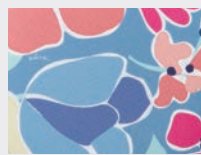
Email h.yoshimoto@toyosteel.jp **Representative** Taiji Hisashi
Establishment 1969
Products pouch
Tel +81 3-6256-9931



PRODUCT 082
OSAKA



HORIUCHI MIRROR INDUSTRY CO.,LTD.



HORIUCHI MIRROR was established at Hirano-ku in Osaka City, which is the only one major area of producing mirrors in Japan. We have been developing and producing mirrors of unisex and ageless design in order to “provide appropriate tools to the people caring for their appearance”. We are studying the detail of the actions and motions of people in their daily lives to produce mirrors which beautifully reflect the images of the users and also make them look beautiful while using the mirrors. Mirrors are important tools for users to view themselves objectively. We recommend you to examine the reflective property of your mirror before hair styling and makeup. We expect that the mirrors produced by HORIUCHI MIRROR will provide a chance to find some new to you.

“Does the mirror reflect real skin color?” Actually, the colors of images reflected by ordinary mirror may be somewhat different from the real color. It is likely to be influenced by the color of the glass itself and light-reflecting surface of the mirror because we see an image as reflection of the light (incident light) which technically passes through the glass of a mirror. Conventional glass contains significant amount of iron that makes it look blue. Such glass absorbs blue part of incident light hence the reflection contains higher ratio of red and green part of the light than natural vision. Especially white looks more yellowish, such mirror makes many colors look dull. In order to avoid such color change, the founder of HORIUCHI MIRROR focused on finding a glass with higher transparency and making light-reflecting aluminum film through repeated trial and error and finally completed the patented “Napure Mirror” which reflects images with pure and natural color without influence by the color of glass. The “Napure Mirror” drastically decreases mistake in makeup, such as too much makeup or unnatural whiteness, which sometimes occurred in makeup with conventional mirror. The mirror developed by our founder has been contributing to improve makeup of Japanese female.

COMPANY

Language support Japanese, English
Name Horiuchi Mirror Industry Co.,Ltd.
Address 1-5-11 Nishiwaki,Hitano-Ku,Osaka-City,Osaka

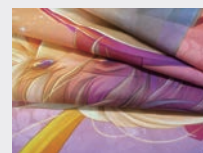
Email horiuchi@cr-horiuchi.co.jp **Representative** Shigemi Horinouchi
Establishment 1955
Products PLUNE MIRROR
Tel +81 6-6702-1987



PRODUCT 083
OSAKA



MEIKI SHOJI Co.,LTD.



Sakai and senshu which are southern part of Osaka is traditional product center of cotton fabric and this fabric called Wazarashi have been produced in the district along Ishizu river running through Sakai city for over 400 years.

This traditional method which has been handed down through the centuries makes cotton fabric more smooth and comfortable to wear.

We have been trying to make this Wazarashi well-known not only in Japan but also over the world.

My company named Meiki-Shoji founded in Osaka Sakai city has been engaged in the products planning and distribution of ornaments and casual wear of traditional Japanese elegance.

Among them, Wazarashi is flagship products of Sakai.

We are very happy if this traditional product is appreciated by the people of all over the world.

COMPANY

Language support Japanese, English
Name MEIKI SHOJI Co.,Ltd.
Address 1-9-9 Sumiyosibasi-cho Sakai-ku Sakaicity Osaka

Email aoki@meikishoji.co.jp
Establishment 1971
Products Wazarasi Chusen Tenugui
Tel +81 72-221-4848

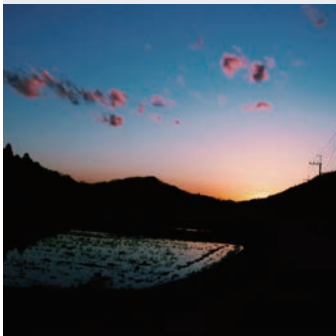
Representative Koichi Murata



PRODUCT 084
HYOGO



SORTE GLASS



Among glass blowing techniques, the “Venetian techniques” is considered the world over to be a unique technique in terms of its depth of history and high standard of techniques. It is with the greatest of respect that I am using this marvelous technique as I undergo the challenge of creating works on a daily basis.

By shaping the transparent glass, you can truly become aware of the original transparent beauty of the glass and have a real sense of its thickness. The contrast between curved and straight lines, its ductility, form, and balance...

Using the “Venetian techniques”, you can truly express its beauty as a shape.

COMPANY

Language support Japanese, English

Name SORTE GLASS

Address Hyougo Tambasayamacity fukusumi 198-3

Email info@sorteglass.com **Representative** Ryo Sekino

Establishment 2012

Products goblet

Tel +81 79-506-3216



PRODUCT 085
HYOGO



SEWING TAKEUCHI CO.,LTD.



Taka-cho, Hyogo Prefecture, where our company is based, is the production area of the dyed textile “Banshuor?” together with the adjacent Nishiwaki City. However, The production volume has been decreasing year by year and has been declining. In such circumstances, we focused on local textile technology and quality, and launched our own brand that handles products using fabrics woven locally. With the aim of reinvigorating local industries, we decided to work to play a part of it in order to recognize the textile production area “Banshu”. In recognition of the above-mentioned concept, the Ministry of Economy, Trade and Industry (METI) also selected “Regional Future Leader”. In addition, the culture of using handkerchiefs is something that Japan boasts to the world. We want to disseminate handkerchiefs overseas from the perspective of Japanese culture and ecology.

In the textile industry, textile town “Taka-cho”, there are many companies that mainly produce and process fabrics. It was founded from the desire to be a company that can deliver "finished products" with feelings to customers. The thought has passed through the times, and while evolving while responding to various needs, it has been handed down to the present day.

COMPANY

Language support	Japanese, English	Email	sakura@sewing-takeuchi.co.jp	Representative	Yuji Takeuchi
Name	Sewing Takeuchi Co.,Ltd.	Establishment	1982		
Address	90 Koujiya,Naka-ku,Taka-cho,Taka-gun,HYOGO	Products	handkerchief		
		Tel	+81 795-32-0018		



PRODUCT 086
HYOGO



KINARI
GLASS
CO.,LTD.



Glass materials are very important part more than processing technique when we manufacture glass product.

We thought we should move head office and factory from city area in polluted air of auto exhaust etc., to countryside, be able to feel the color of the season's transition and clear air. Because of manufacturing sterling glass material and products.

We study many things to come from nature night and day in Tanbasayama.

We manufactured glass products by Chinese glass material.

There were so much troubles of vary in quality. And also clear and color glass isn't clear, difficult to work, etc.

Then we thought we must develop our glass material (formula) by ourselves to manufacture beautiful and clear glass product.

And we started develop our original glass materials with National Lab.

As a result, we finished developing for 5 years and get the patented.

We will keep manufacturing glass material and products by stable and beautiful quality.

COMPANY

Language support Japanese, English

Name kinari glass Co.,Ltd.

Address Tsuji 924, Tanbasayama-city, Hyogo-prefecture

Email miyata@tonbodama.com **Representative** Kiyoshi Tani

Establishment 2000

Products flower drop necklace

Tel +81 79-556-3350



PRODUCT 087
OKAYAMA



WHOVAL
CO.,LTD.



Based on the concept of "AUTHENTIC JAPAN DENIMISM", it expresses a unique design and a calculated silhouette that can only be expressed with a factory brand, backed by reliable sewing and sophisticated processing techniques up to vintage. It is.

JAPANESE CRAFTSMAN SHIP is surely breathing in the vintage feeling that drifts some Japanese tradition and culture, while being designed naturally and stylishly.

Blue Sakura products are created one by one in Kojima, Kurashiki City. Sunny country "Okayama". The beautiful Seto Inland Sea with a mild climate and more than 700 islands is called the "Japanese Mediterranean". At the center of this beautiful area is Kojima, the birthplace of Japanese jeans.

The craftsmen who are attracted to denim who want to communicate the manufacturing in Kojima to the world are trying to make better products and become the best craftsman in the world.

While cherishing the tradition of good old things, we continue to challenge new craftsmanship and infuse the soul of Kojima made into each denim.

Cause I born in Kojima and grew up with denim, it was so automatically stepping into jeans industry.

We established WHOVAL in 2007. From the thought that we can't realize our creations without washing process, so we started the processing plant. Employees has exceeded 30, and we are striving to raise the value of "made in Kojima". Skilled engineers and sensitiveness youth work hard together to expand the range of their works and also challenge various processing. Now here in Kojima has become widely known as a town of jeans over the world.

"Bring to the world from Kojima, the birthplace of Japanese domestic jeans."

This is our belief to develop unknown technology and new products.

COMPANY

Language support Japanese, English

Name WHOVAL Co.,Ltd.

Address 5-1-50,Kojima,Shimono-cho,Okayama,711-0906

Email r.ino@whoval.com

Establishment 2009

Products "DENTO" KIMONO SASHIKO

Tel +81 86-474-0080

Representative Shuji Ishibashi



PRODUCT 088
OKAYAMA



TAKEYARI
CO.,LTD.



Kurashiki in Okayama has a 70% share of the canvas market in Japan. High density canvas is woven with rare antique Belgium shuttle looms. There canvas woven craftsmen is the proof of TAKEYARI quality. To know the good quality of TAKEYARI's canvas. We thought to start making familiar manufactured goods.

Our founders, Mr. and Mrs. Takeyari opened a weaving factory in Kurashiki, Okayama in 1888. Kurashiki is located by the Seto Inland Sea and the land is not suitable for growing rice and vegetables due to the amount of salt in the water. However, it was perfect for growing cotton and the large cotton industry has been developed there since the 17th century. The wife Ume was an exceptional weaver and the quality of their products gradually became well known.

COMPANY

Language support Japanese, English
Name TAKEYARI Co.,Ltd.
Address 414 SOBARA KURASHIKI-CITY,OKAYAMA

Email info@takeyari-tex.co.jp
Establishment 1888
Products Tiger Canvas Tote
Tel +81 86-485-1111

Representative Kenji Takeyari



PRODUCT 089
SHIMANE



MURATAYA CORPORATION



In Iwami region in the western part of Shimane prefecture, where gods are said together from all over Japan, we have been dealing with all kinds of kimonos and obis for 80 years. Although Shimane is suffering from rapid depopulation and aging problem, it still has so many wonderful traditional skills. Among them are Sekishu Hanshi, which was added to UNESCO's Intangible Cultural Heritage List in 2009, and Sekishu Tile, which is made only by the company certified by Cool Japan. Unfortunately, it is regrettable that the number of traditional technique holders is decreasing due to lack of successors. The situation here like this, we try hard to continue to develop our products, hoping that our future generation will solve this problem.

Not only the kimono and obi, but also the decline in the number of traditional Japanese technology holders is regrettable, and I want to pass on the solution of the successor problem and the technology to the future generation. I decided to develop the product.

COMPANY

Language support Japanese, English
Name Murataya Corporation
Address Ekimac-cho 11-16 Masuda-City
Shimane Prefecture

Email murataya@iwami.or.jp
Establishment 1937
Products Magatama-shaped shoulder bouch
Tel +81 856-22-0098

Representative Tooru Murakami



PRODUCT 090
HIROSHIMA



HIROSHIMA ARTIST BRUSH MFG. CO.,LTD.



Our company has been working with the making of brushes in Kumano Town. Started manufacturing and selling brushes as a company called “Shiromoto Shoten”, founded 138 years and 150 years since the making of brushes.

The feature of Kumano Brush is that it uses natural animal hairs and is made with a method that does not cut the brush tip.

We never cut off the brush tip, the hairs feel softer on your skin

Cosmetics (whether powder or liquid) enter between the hairs and hold them firmly.

The moment the Kumano brush tip touches your skin, the cosmetics are placed on the skin thinly and evenly.

Kumano brushes use different animal hairs depending on functionality and usage.

Animal hair cuticles hold more cosmetics and release them on your skin.

The animal hair uses the hair acquired by the international standard of Europe and USA.

And we appreciate the animals who provided the hair, and we are holding a brush memorial service every year.

Animal hair is environmentally friendly as it returns to the soil after use.

COMPANY

Language support Japanese, English

Name Hiroshima Artist Brush Mfg. Co.,Ltd.

Address 4-7-24 Nakamizo, Kumano-cho, Aki-gun,
Hiroshima

Email shiromoto@artbrush-hiroshima.com

Establishment 1881

Products KUMANO Makeup Brush Set with KIMONO

Tel +81 82-854-1145

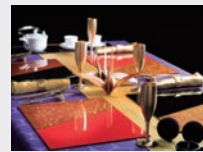
Representative Kenji Shiromoto



PRODUCT 091
HIROSHIMA



SHIPPAIN FUJITA CO.,LTD.



Each are Made Possible by Hand.
The SHINOBI series are all handmade from scratch by craftsmen.
We accept customized orders due to our wish to work alongside business owners who are selective and passionate in everything about their business.
We can create one-of-a-kind items in various sizes and colors in accordance to your "business" or "operation," whether it be a restaurant or a hotel.
We will assist your uncompromising desire in establishing your store.

Since our founding, all painting work has been through direct sales. That is because we want to hear customer opinions directly. The SHINOBI series this time is also not sold to sales companies in order to meet customers' orders as much as possible. Only in-house EC. The SHINOBI series, too.

COMPANY

Language support Japanese, English
Name Shippaint Fujita Co.,Ltd.
Address Hiroshima Ken Fukuyama shi Miyukicyo Nakatsuhara 1967 7

Email shipshinobu@gmail.com
Establishment 1999
Products SHINOBI-BOTAN-BLACK
Tel +81 84-955-5441

Representative Yasuhide Horiuchi



PRODUCT 092
TOKUSHIMA



KINUYA
CO.,LTD.



History of Awa Ai

Awa Ai (Traditional dyeing technique practiced continuously for around 600 years)
Awa is the old region name in Tokushima, where ai production started around the 5th century. The Awa Ai brand was a fixture of high quality Indigo dye by the 17th century, and even today Tokushima is still responsible for the production of the ai.
In Tokushima where the ai (Japanese indigo blue) is produced, there are farmers who have been cultivating the ai for generations. Also, there are craftsmen called Ai-shi (indigo master) who converts the cultivated ai to dyeing materials, and workshops to dye the fabrics. While valuing the natural features of the region, the entirety of the integrated process of natural dyeing handicraft called Ai-zome (natural plant indigo dye) can be processed in this region.
Ai-zome leather is produced by immersing natural leather into the ai dyeing liquid many times with natural-plant-indigo-dye technique, and hand-dyeing one by one carefully. The depth of color, variances, and clear color are expressed in the leather as features of Ai-zome, which is "JAPAN BLUE LEATHER."

"Kinuya" in Tokushima celebrated its 100th anniversary in 2012.

The main product of Kinuya is kimono (traditional Japanese clothing). While utilizing traditional crafts' dyeing techniques and designs, as well as ornaments and arts cultivated through kimono production, we propose products that enrich modern life.

This Ai-zome leather is also made with an unconventional method by incorporating natural dyeing technique used on kimono.

COMPANY

Language support Japanese, English

Name Kinuya Co.,Ltd.

Address 2-35-1, Terashima Honcho Nishi,Tokushima

Email info@japan-ai.jp

Establishment 1961

Products Natural Indigo Dye Shibori Leather Business card holder

Tel +81 88-622-1745

Representative Akihiro Yamada



PRODUCT 093
TOKUSHIMA



NAKAWOOD Co.,Ltd.



Tokushima's traditional Yuzan box is carefully made using Tokushima Prefecture's timber and Awa Sashimono technology so that it can be used for a long time.

We will cultivate attachment to wooden products and Tokushima while actually using them.

The forest's water source recharge function, sediment discharge prevention function, carbon dioxide (CO2) fixing function, etc. are maintained by appropriately harvesting and managing trees grown for timber. I would be happy if you can think about the natural systems of the mountainous areas that support the mountains, rivers, and watersides through the products.

COMPANY

Language support Japanese, English
Name NAKAWOOD Co.,Ltd.
Address 1, yahakahe, yoshino, Naka-town, Naka-gun, Tokushima

Email info@nakawood.co.jp
Establishment 2014
Products NAKA Yusanbako
Tel +81 884-62-1163

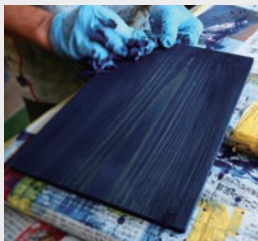
Representative Mitsutoshi Kotani



PRODUCT 094
TOKUSHIMA



DAIRI LUMBER CO.,LTD.



Tokushima prefecture is Japan's biggest domestic producer of the indigo plant. Because of this, the area is home to skilled craftsmen who have specialized in Indigo-Dyed for generations. Aside from the masterfully produced indigo-dyed textiles, we are creating beautiful interior/ exterior building material using indigo-dyed cedar. Also, we manage the indigo plants farm by ourselves for trying to expand the local businesses. As a reason for that, we would like to hand over our Japan Blue and another local valuable resource to the next generation.

By developing a unique paste-like substance from the traditionally-produced indigo and treating it as a pigment rather than a dye, we established a technology that can be used as a paint or spray and applied it to designs that make use of grain as part of construction materials, interiors, or small objects. These products exhibit a rich blue that still allows the natural surface grain of the wood to be visible, unlike painted wood. Due to the nature of the process, each piece is unique in terms of the depth of color achieved.

Dairi Lumber offers interior and building materials including logs as residential building materials, and we have the largest market share in the Shikoku area in the manufacture of two-by-four-home houses paneling. Recently we established an indigo coated materials technology that can be used as a paint or spray and applied it to designs that make use to wood as part of construction materials, interiors, or small objects.

COMPANY

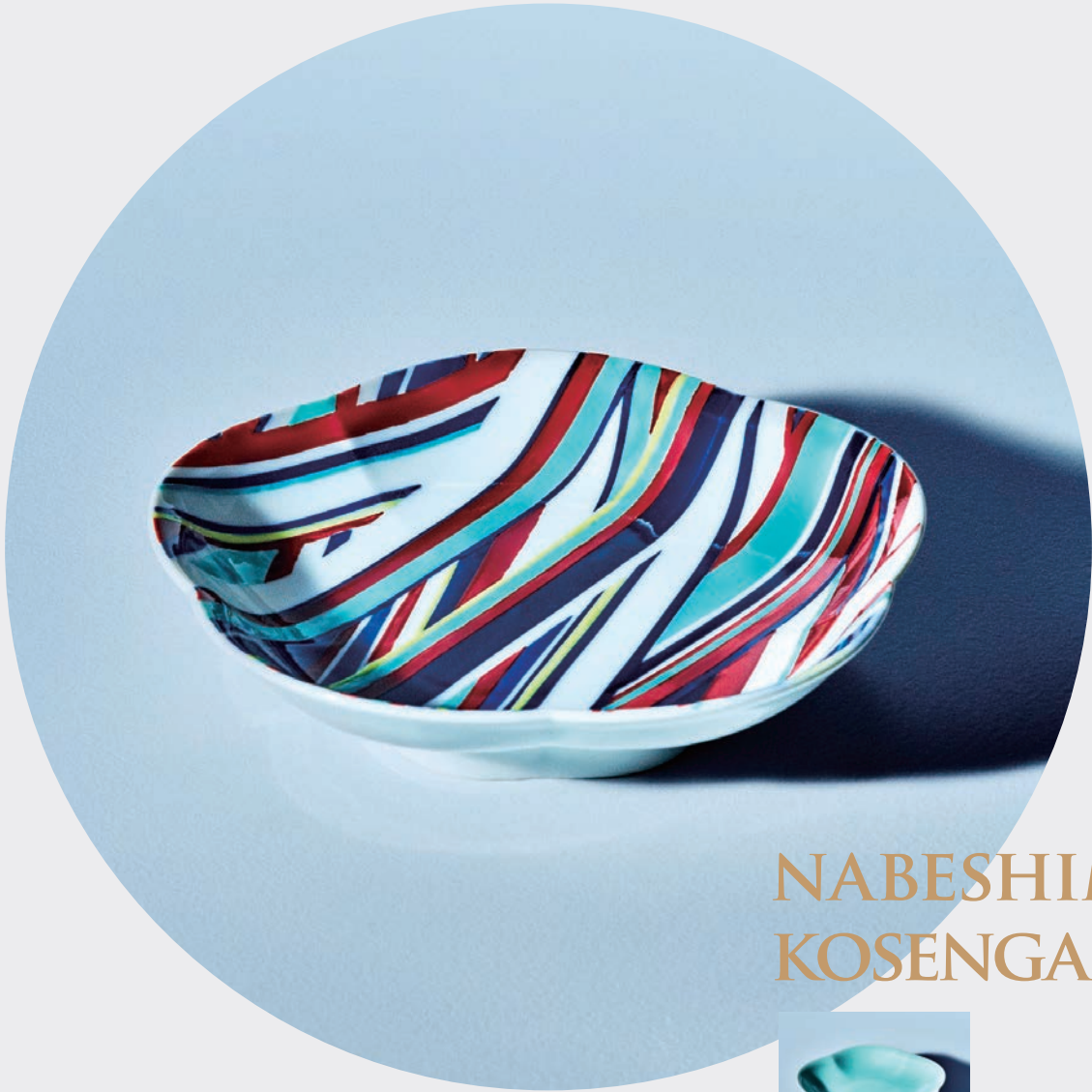
Language support Japanese, English
Name Dairi Lumber Co.,Ltd.
Address 7-68 Tsudakaigan cho Tokushima city, Tokushima

Email info_abroad@dairinet.com
Establishment 1959
Products Indigo Coating Cypress Wood Pair Cup Set
Tel +81 88-662-5505

Representative Takahiko Kohama



PRODUCT 095
SAGA



NABESHIMA KOSENGAMA



KOSEN brand was born from a strong desire to let many people know the charm of “Nabeshima”, a production area that has been handed down for more than 350 years since the Edo period. There are three main characteristics of Nabeshima ware: “Colored Nabeshima”, “Indigo Nabeshima” and “Nabeshima Celadon”. Taking advantage of these three features, it has become a modern design of the background of Nabeshima ware in all shapes, designs and techniques. Deeply related to the production area, the founder, Mr. Tameo Kawasoe contributed to the development of the production area by making many donations and donations to the production area. In addition, Mr. Toratakashi Kawasoe who is also a modern writer is serving as the chairman of the past union and is working to contribute to the production area. In addition, Nabeshima Kosen Kiln has a vision of “Establishing Nabeshima ware culture” to make the production area more vigorous.

About Nabeshima Kosengama (Kosen Kiln)

Founder of Kosengama, Kawasoe family is a family of craftsmen descent specializing in ornaments and glaze who have passed down techniques for generations. In 1963(Showa 38), my grandfather Tameo, who was the youngest of the siblings, founded the current Kosengama.

With the unwavering passion to make Nabeshima celadon better known, he researched celadon ware glaze for over 10 years (in those days, making celadon was so difficult and required high techniques, it was said that firing celadon would make the kiln bankrupt).

As we aspire to make the culture and history of Nabeshima well-known to wider audiences, to transcend for centuries to come, of this culture of Nabeshima porcelain that has been inherited in this hidden beloved village of Okawachiyama since Edo period, we set up a vision “to establish the culture of Nabeshima” to develop the future of the kiln.

Today, while maintaining the technical succession at the core, founders’ grandson I, Takahiko Kawasoe, for the first time in 56 years from my grandfather’s decades research, has started my own research and development of celadon, from a different angle from my grandfathers’, a lifelong endeavor to spread the charm of new Nabeshima and Nabeshima Kosengama.

We, Nabeshima Kosengama will create to provide values of Nabeshima to match the needs of time, and continue to rightfully pass down through generations, universal values of Nabeshima that remains the same through time.

COMPANY

Language support Japanese, English
Name nabeshima kosengama
Address 1555-17 Fumaneki, Minamihata-cho Imari-shi Saga

Email k.takahiko@nabeshima-kosen.jp **Representative** Kawasoe Torataka
Establishment 1963
Products ironabeshimakoudaizara
Tel +81 90-5744-2114



PRODUCT 096
SAGA



YAMAHEI KAMAMOTO CORPORATION



Arita ware has celebrated its 400th anniversary as the birthplace of Japanese porcelain. While respecting the tradition and culture cultivated by our predecessors, we would like to create a new form of Arita ware that matches the modern living space.

The 47th year since the founding of the founder started. Since that time, we have been producing tableware for inns and hotels.

COMPANY

Language support Japanese, English
Name Yamahei Kamamoto Corporation
Address 2267-1 Otu Kuwakoba, Arita, Nishimatsuura Saga

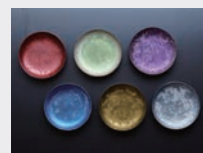
Email info@yamaheigama.co.jp **Representative** Hirofumi Yamamoto
Establishment 1972
Products Egg Shell Sake Set
Tel +81 955-42-2459



PRODUCT 097
SAGA



KINSHODO CO.,LTD.



The "Lin" series was first produced in 2015 at the 400 year commemoration of the Arita porcelain production. In order to break through the severe turn down of economic performance of the region, We tried to make an unprecedented pottery. This "Lin" was created after a long trial and error. Since then, it has gained popularity in Japan. Becoming well known in abroad, it was exhibited at "NYNOW2019 Summer" in August 2019, and won "BEST IN SHOW" prize in the accessories category.

The Arita porcelain range, the "Lin" by Kinshodo, was created to celebrate 400 years of Arita porcelain history. The name "Lin" was born from its likeness to a metallic sound and paying homage to the master artist "Linzo Kaneko", an Arita porcelain artist in early 20th century who played a major role in building the foundation of the Kinshodo brand stands today. His visionary design and prominent craftsmanship has been inspirational and remains at the core of many current-day works.

COMPANY

Language support Japanese, English
Name Kinshodo Co.,Ltd.

Address 2351-169 Akasaka hei, Aritacho, Nishimatsuura-gun,
Saga Prefecture

Email kinshodo@peace.oen.ne.jp **Representative** Shinji Kaneko

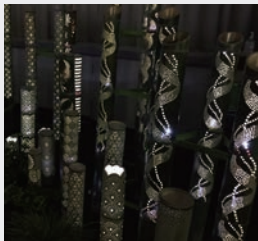
Establishment 1961
Products Lin Platinum Sake Cup
Tel +81 955-43-2007



PRODUCT 098
KUMAMOTO



GREENEXUS CO.,LTD.



The people of Japan have lived with bamboo since ancient times. With tools made of bamboo being excavated from ruins from the Jomon period. Bamboo is a plant vital for the lives of the people and is an essential material that should be handed down as a part of Japanese culture. We are creators, exploring products that enrich one's life through the incorporation of bamboo. Pliable yet strong, bamboo is versatile and can be used for anything. Whether in its natural form or whittled into a thin stick, bamboo can be used in a variety of ways through altering its size, shape and width. We coexist, are confronted with, and revive the nature in our hometown of Kumamoto, where environmental issues concerning bamboo groves are being worked out. Appreciating the GREEN of the earth, we manufacture bamboo products that can be passed on to the next generation with a passion to eventually create NEXUS, a bond between the people, the chefs and customers, and also between Japan and the world, which will lead to a future full of love.

We manufacture our products in an effort to display Japanese style at luxury hotels, inns, restaurants, or anywhere else. Delivering the warmth of natural materials of Kyushu, from Kumamoto to Japan and beyond.

COMPANY

Language support Japanese, English
Name GreeNexus Co.,Ltd.

Address kumamoto-kenn,kikuti-si,sisui-mati,naga,4147-1

Email takehashi@greenexus-bamboo.com **Representative** Takeshi Omura

Establishment 2017

Products Bamboo Butter Knife

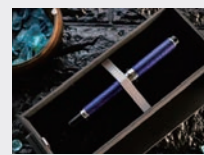
Tel +81 968-28-9065



PRODUCT 099
OITA



OITA MADE CO.,LTD.



This Local Company's passion created the miracle fountain pen – JAPAN BLUE FOUNTAIN PEN. Nagao Seisakusho is in Saiki City in Oita and skillful at sheet metal working. A fusion of the innovative technology developed by years of research and Japanese traditional color “indigo blue” created the metal material colored by natural indigo blue. The manufacturing company's passion created the excellent technology and attractive material.

Oita Made, a regional trading company in Oita, always does what they can do to contribute for the local community. This time, they led this fountain pen to be commercialized. Always using their passion, the regional trading company finds “Oita's special” and makes its special products. Sailor Pen, the representative stationary company of Japan, was moved by their passion and created this special fountain pen with Oita's special material. This Oita-born fountain pen is full of innovative technology and local companies' passion.

COMPANY

Language support Japanese, English
Name Oita Made Co.,Ltd.
Address AKARENGAKAN 2-2-1, FUNAI CHO, OITA CITY,
OITA PREFECTURE

Email masahiro-imai@oitamade.jp
Establishment 2017
Products JAPAN BLUE FOUNTAIN PEN
Tel +81 97-513-2828

Representative Tetsukazu Sato

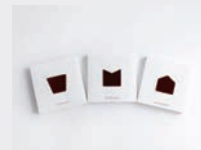


PRODUCT 100

OITA



J PACK CO.,LTD.



SITEKATA is a 2D-3D transforming gift box unlike anything you have ever seen. No one can imagine by just taking a look that three dimensional box jumps out from a 1cm thin sheet and a gift is in it. The reason we developed SITEKATA is that we wanted to create a gift box that people would not want to throw it away. We wanted people feel worth the gift box as much as the things in it.

The idea of creating SITEKATA is based on pop-up art, a technique that dates back in hundreds of years. We are committed to providing products made from only paper, expert handwork, and human intelligence.

18 years ago, our company was forced to close its doors due to an affiliate company going out of business. However, a few months later, our employees were able to establish a new company, under the name J Pack. We were able to do this because of the demand of our customers all over Japan wanting to continue to use our gift boxes. In other words, this product saved our company. Since then, we have focused on developing this gift box that only we can make. As a result, we have been able to create and patent many new products. We feel it is our mission to preserve the idea we put into our products and pass them on to the next generation.

COMPANY

Language support Japanese, English

Name j pack Co.,Ltd.

Address 740-banchi,mifune,hasama-machi,yufu-shi,oita-ken

Email arigatou@jpack.jp **Representative** Johachi Ono

Establishment 2001

Products Type-B

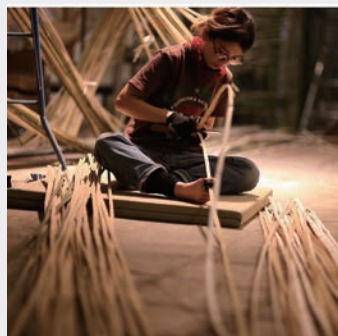
Tel +81 97-586-3730



PRODUCT 101
OITA



NEWFOCUS INC.



Commitment is the creator must go to the mountain where the atelier is set up and procure materials by carefully selecting bamboo. I make this film with the idea that the beauty of bamboo can be conveyed. I would like to convey the unique potential of bamboo as a material. Bungotakada City, where the atelier is currently located, is a land where beautiful and solid bamboo is born. But if you can't use it well, you'll just become a nuisance. Because it is a jewel-like material created by the corner land, I want to create something that makes people feel fond.

While focusing on video production, we focus on new aspects of everything and things, Founded on the theme of new value creation.

COMPANY

Language support Japanese, English
Name newfocus Inc.
Address Oita Bungotakada Chuodori685

Email hello@mikaibamboo.com **Representative** Kazuya Aso
Establishment 2014
Products TAGAring Urushi
Tel +81 978-25-5234



【Contact】

Japan External Trade Organisation(JETRO)
Digital Promotion Division, Digital Trade and New Industry Department
E-mail:DNA-project@jetro.go.jp