

Nippon Koei Co., Ltd.



- ❑ Address: Chiyoda-ku, Tokyo
- ❑ Employees: 2397
- ❑ Established in 1946
- ❑ Business: Development, and engineering consulting and engineering evaluation services, design and construction of electric power facilities and various works, manufacture and sale of electric power-related equipment, electronic equipment and devices, etc.

NIPPON KOEI

<https://www.n-koei.co.jp/english/>

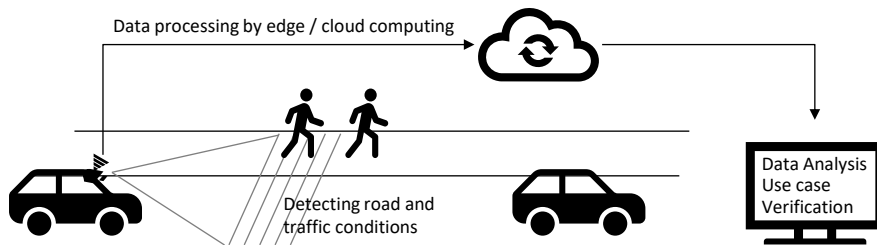
Outline of the demonstration project

- Advanced Road Management using Big Data from vehicle camera mounted on commercial vehicles in Singapore

Cooperation with local companies/governments

- Local partners: Car Club Pte Ltd
- Details of cooperation and collaboration: Provision of vehicles

[Demonstration project image]



Cameras are mounted on car-sharing vehicles

Targeted economic/social issues

- In Singapore, there is an urgent need to address the ongoing aging of road infrastructure and to respond to the increasing development of new roads.
- Because of the rising domestic labor costs and the difficulty in securing foreign workers due to COVID-19, road maintenance management mainly by manpower is also an issue.

Details of demonstration

- Demonstration of the services that data obtained from cameras mounted on car-sharing vehicles is analyzed using AI and IoT technologies, and provided mainly to road managers.
- It will improve the efficiency of daily inspections and support the drafting of road repair plans based on data predictions, and effective traffic safety measures are proposed based on the relationship between traffic volume, road structure, and other factors.
- Using the collected data, we aim to develop unique services by combining it with the road maintenance management support systems, road structure measurement systems, etc., which we are working on separately

Expected outcome of beneficiary effects

- Contribution to the export of infrastructure management technologies and services accumulated in Japan to the Southeast Asian region.
- Economic benefits from ensuring the quality of road infrastructure and strengthening the road network are also expected.
- It also collects data that can be used for traffic safety, autonomous driving, and other transportation measures promoted by Singapore.