

**Directory of
Japanese-affiliated Companies in Texas
Third Edition**

**Published by:
Consulate-General of Japan in Houston
JETRO Houston**

January 2026

Inquiries

All parties interested in companies included in this directory should contact those companies directly.

For inquiries regarding this directory that are not related to specific companies, please contact the following:

JETRO Houston

inqu-hou@jetro.go.jp

Despite our best efforts to provide up-to-date and accurate information in this brochure, the Consulate-General of Japan in Houston and the Japan External Trade Organization (JETRO) Houston decline any responsibility for inaccurate, incomplete, or outdated information that may be printed in this pamphlet, and expressly disclaim any liability for errors or omissions in its contents. The Consulate-General of Japan in Houston and JETRO Houston are not liable for any damages which may occur as a result of using this directory.

Greetings

I am pleased to extend my sincere congratulations on the publication of the revised Directory of Japanese Companies Located in Texas.

Nearly five years have passed since the first edition of this directory was published, during which time the economic ties between Japan and the State of Texas have grown steadily stronger. I would like to express my profound appreciation to the JETRO Houston Office for taking the initiative in updating the directory's information, and to the Japanese business associations and their member companies for their generous cooperation in this important undertaking.

In recent years, Texas has established itself as one of the fastest-growing regions in the United States, supported by its vast land area, excellent access to both domestic and international markets, and abundant natural resources, along with sustained population growth, a business-friendly tax environment, and a relatively low cost of living. In Texas, Japanese companies have established more business operations than any other foreign investor, and have continued to make significant contributions to local communities by providing high-quality products and services while emphasizing local employment and offering their employees higher average salaries than companies of other countries, including the United States. As a result, interest in Japanese companies among local governments, economic organizations, and businesses throughout Texas has continued to grow, generating strong expectations for an updated edition of this directory.

It is my sincere hope that this new edition will be widely utilized, further strengthening the ties between Texas and Japanese companies and serving as a foundation for many new and lasting business opportunities.



Zentaro Naganuma
Consul-General of Japan in Houston



The Japan External Trade Organization (JETRO) is a government-related institution with a global network of more than 50 offices in Japan and over 70 overseas. Through this platform, JETRO connects businesses, governments, and communities, helping drive sustainable economic development and international cooperation.

Since its founding in 1969, JETRO Houston has supported Japanese companies and promoted business ties between Texas and Japan for more than five decades. In recent years, we have observed significant shifts in corporate activity—an increase in new entrants from Japan, more companies exploring expansion or headquarters relocation to Texas, and growing interest in using the state as a base for North American operations. These changes coincide with a broader adjustment in the U.S. business environment amid political transition and evolving federal policies. Even so, Texas continues to attract strong corporate interest thanks to its scale, economic resilience, and forward-looking industrial strategy. JETRO will continue working closely with the State of Texas and regional partners to help Japanese companies navigate these developments and pursue sustainable growth.

This revised edition reflects these emerging trends. Updated with the latest information, the directory has been reorganized to better meet today's business needs and serve as a practical resource for companies and organizations across the state.

I extend my sincere appreciation to the Japanese business associations, their member companies, and all contributors who supported this revision. I hope this edition will help spark new connections and further strengthen the longstanding partnership between Texas and Japan.

Hideki Shimada
Chief Executive Director
JETRO Houston



Company Index by alphabetical order

Houston and the Surrounding Area

Company Name	Page
All Nippon Airways Co., Ltd	9
Chiyoda International Corporation	10
Cosmo Oil of U. S. A., Inc.	11
Daido Steel (America) Inc	12
DAIICHI JITSUGYO (AMERICA), INC	13
Daikin Comfort Technologies North America. Inc.	14
ENEOS Americas Inc.	15
ENEOS Xplora USA Limited	16
Equipment Depot, Inc.	17
Gakkyusha U.S.A. Co.,Ltd. d/b/a “ena”	18
Hitachi Industrial Equipment & Solutions America, LLC	19
HORIBA Instruments Incorporated, Houston Office	20
Idemitsu Americas Holdings Corporation	21
IHI Energy Solutions Inc.	22
IINO LINES (U.S.A.) INC.	23
INPEX USA, Inc.	24
Japan Aerospace Exploration Agency (JAXA) Houston	25
Japan Organization for Metals and Energy Security	26
JAPEX (U.S.) Corp.	27
JERA Americas Inc.	28
JETRO Houston	29
Kaneka Americas Holding, Inc. / Kaneka North America	30
Kanematsu USA	31
KDDI America, Inc.	32
KITZ Corporation of America	33
Kobelco Construction Machinery U.S.A. INC.	34
Kobelco Welding of America, Inc.	35
Kuraray America, Inc.	36
Kureha America Inc.	37

Company Name	Page
Kureha Energy Solutions LLC	38
Logisnext Americas Inc.	39
Marubeni America Corporation (Houston Branch)	40
Meiko America, Inc. Houston Branch	41
Mitsubishi Corporation (Americas)	42
Mitsubishi Heavy Industries America	43
Mitsubishi Logistics America Corporation	44
Mitsui & Co. (U.S.A.), Inc.	45
Mitsui & Co. Energy Marketing and Services (USA), Inc.	46
Mitsui E&P USA LLC	47
Mizuho Bank, Ltd.	48
MODEC America, Inc.	49
MOL (Americas) LLC	50
MUFG Bank, Ltd. Houston Agency	51
Nikkei America, Inc.	52
NIPPON CARBON OF AMERICA, LLC	53
Nippon Express U.S.A.,Inc.	54
NIPPON KAIJI KYOKAI(ClassNK)	55
NIPPON STEEL NORTH AMERICA, INC.	56
Nippon Steel Trading Americas Inc. Houston Branch	57
NYK Group Americas Inc.	58
OKAYA(U.S.A.)INC.	59
Osaka Gas USA Corporation	60
Pasona	61
Sanyo Chemical Texas Industries, LLC	62
Sojitz Corporation of America	63
Staffmark Group (Recruit HD)	64

Company Index by alphabetical order

Houston and the Surrounding Area

Company Name	Page
Sumitomo Corporation of Americas	65
Sundai USA, Inc.	66
TADANO AMERICA CORPORATION	67
Tokio Marine America Houston Branch	68
Tokyo Gas America Ltd.	69
Tomoe Engineering USA, Inc.	70
Toray International America Inc. (Houston Office)	71
Toshiba International Corporation	72
Toshiba Logistics America, Inc.	73
TOYO U.S.A., INC.	74
Valqua NGC, Inc.	75
Yamato Transport U.S.A. Inc.	76
Yokogawa Corporation of America	77

Dallas and the Surrounding Area

Company Name	Page
1Finity Americas, Inc. (Formerly: Fujitsu Network	79
7-Eleven, Inc.	80
Accretech America Inc.	81
Agent America, Inc.	82
CMC Productions USA, Inc.	83
Denso International America, Inc. / Denso Products and ena Dallas	84 85
Fujitsu North America Inc.	86
Hayakawa Electronics America Inc.	87
Hitachi High-Tech America, Inc.	88
IACE TRAVEL	89
ITO EN(North America)INC.	90
Japan Airlines Co., Ltd.	91
Kamei North America Texas Office	92
Kamigumi USA Inc.	93
KDDI America, Inc.	94
Kintetsu World Express (U.S.A.), Inc.	95
Marubeni Transport Service Corp. (MTS)	96
Misawa Homes America, Inc.	97
Mitsui Bussan Logistics Inc.	98
Mizuho Bank, Ltd., Dallas Representative Office	99
MUFG Bank, Ltd. Dallas Agency	100
NEC Corporation of America	101
NIPPON EXPRESS USA, INC.	102
Nomura Research Institute IT Solutions America, Inc.	103
NTT DATA Services (NTT DATA, Inc.)	104
Open House Texas Realty & Investments LLC	105

Company Index by alphabetical order

Dallas and the Surrounding Area

Company Name	Page
Panasonic Corporation of North America	106
Quick USA, Inc.	107
SCSK USA Inc.	108
SMC Corporation of America	109
SOMPO	110
Sumitomo Precision USA, Inc.	111
Taisei USA LLC	112
Tokio Marine America Dallas Branch	113
Toyo Cotton Co.	114
Toyota Motor North America, Inc.	115

Austin and the Surrounding Area

Company Name	Page
HORIBA Instruments Incorporated Austin Office	117
JET AMERICA INC.	118
Kyocera International, Inc. Austin Office	119
Resonac America, Inc.	120
SMC Corporation of America	121
Tokyo Electron U.S Holdings. Inc. /	122

Company Index by alphabetical order

San Antonio and the Surrounding Area

Company Name	Page
AISIN TEXAS CORPORATION	124
Aloe Laboratories, Inc.	125
American Kattera, LLC	126
NIPPON EXPRESS USA, INC.	127
NISSEI AMERICA, INC.	128
Okayasu Rubber America, Inc.	129
Shiratsuki North America, Inc.	130
Toyoda Gosei Texas, LLC	131
Toyota Motor Manufacturing Texas, Inc.	132
TOYOTETSU TEXAS, INC.	133

El Paso, Laredo, McAllen and the Surrounding Area

Company Name	Page
NIPPON EXPRESS USA, INC.	135
SMC Corporation of America	136
Vinton Steel LLC	137

Houston and the Surrounding Area

Bellaire, Bryan, Houston, Humble, Katy, La Porte, League City, Liberty, Pasadena, Stafford, Sugar Land, The Woodlands, Waller



All Nippon Airways Co., Ltd

Japanese HQ	All Nippon Airways Co., Ltd	Industry Classification	Transportation
Website	www.fly-ana.com	Corporate Form in Texas	Branch Office
Texas Address	500 Jefferson Street, Suite 1990, Houston, Texas 77002	Email in Texas	sh.sakamoto@fly-ana.com
Number of Employees	<Texas> 15 <Global> 13,636	Corporate Function in Texas	The U.S. headquarters is located outside of Texas
Year of Establishment	<Texas> 2015 <Japan> 1952	Contact Person in Texas	Shigeru SAKAMOTO, General Manager, Houston Office
Annual Sales	<Texas> - <Global> -	Texas TEL	832-786-4390

Company and Product/Service Overview, Activities in Texas

All Nippon Airways (ANA), Japan's largest and 5-Star airline for 12 consecutive years, was named "2025 Airline of the Year" by Air Transport World (ATW) at the 51st Annual Airline Industry Achievement Awards. This is the fourth time ANA has received this prestigious award, following 2007, 2013, and 2018, the most among Asian airlines, further solidifying its position as a global leader in aviation excellence.

ANA Houston route aim to provide our customers with greater choice and flexibility for destinations and travel schedules. As a key market for the U.S. oil and gas industry, expanding service to Houston emphasizes our desire to make travel more convenient. Additionally, this Houston route will allow us to improve access between Asia and Latin America.

ANA is confident that this new route from Bush Intercontinental to Tokyo Haneda will create ease and convenience for all our passengers. In addition, ANA is committed to ensuring the comfort and safety of all its valued passengers and our employees by providing customers with clean and hygienic environments in airports, lounges and onboard aircraft through "ANA Care Promise", our new standard for air travel. We will continue our efforts to ensure the safety and comfort for all passengers flying with ANA.



Chiyoda International Corporation

Japanese HQ	Chiyoda Corporation	Industry Classification	Engineering Construction
Website	https://chiyodacorp.com/en/	Corporate Form in Texas	Subsidiary
Texas Address	2050 W SAM Houston pkwy, Suite 850, Houston, TX 77042	Email in Texas	akutsu.tatsuya@chiyodacorp.com
Number of Employees	<Texas> 164 <Global> 3,419	Corporate Function in Texas	U.S. headquarters
Year of Establishment	<Texas> 1973 <Japan> 1948	Contact Person in Texas	Tatsuya Akutsu, Treasurer/Chief Finance Officer
Annual Sales	<Texas> - <Global> FY2024, \$3,050Million	Texas TEL	713-965-9005

Company and Product/Service Overview, Activities in Texas

Chiyoda is a global engineering company providing innovative and integrated solutions to promote energy transition and a sustainable world. We provide Engineering Procurement and Construction (EPC) services and technologies for energy facilities (LNG/gas, refining, chemicals), environmental, pharmaceutical/bio, renewables (hydrogen, solar, energy storage), and other industrial facilities. We provide advanced engineering and digital solutions to optimize and solve today’s global challenges such as the reduction of greenhouse gas emission and increasing production for better economics.

In Texas, we primarily provide early-phase studies and Front End Engineering and Design (FEED), and deliver EPC services for energy facilities in North America such as LNG liquefaction facilities for Freeport LNG and Golden Pass LNG, and an ethylene production facility for Gulf Coast Growth Ventures, as well as physical and digital O&M-X solutions. Currently, we are designing and constructing a world-class LNG export facility in the Port Arthur area. Furthermore, we are expanding our business co-creation with existing and new customers and partners by leveraging Chiyoda's strong technology development foundation, extensive EPC track record, and robust network with diverse stakeholders.



Cosmo Oil of U. S. A., Inc.

Japanese HQ	Cosmo Oil Co., Ltd.	Industry Classification	Mining, Quarrying, and Oil and Gas Extraction
Website	https://www.cosmo-energy.co.jp/en/company/group/cosmo-coc.html	Corporate Form in Texas	Subsidiary
Texas Address	1800 West Loop South, Suite #1810, Houston	Email in Texas	eitaro_sakaya@cosmo-oil.co.jp
Number of Employees	<Texas> 4 <Global> 1,463 (as of March 31,2025)	Corporate Function in Texas	U.S. headquarters
Year of Establishment	<Texas> 2014 <Japan> 1986	Contact Person in Texas	Eitaro Sakaya / President
Annual Sales	<Texas> 2 million (USD) <Global> 2, 800 billion (JPY)	Texas TEL	832-834-7822

Company and Product/Service Overview, Activities in Texas

Cosmo Oil of U. S. A., Inc. (a wholly owned subsidiary of Cosmo Oil Co., Ltd.) was established in New York in 1967 and relocated to Houston in 2014.

Business Activities:

- Trading of crude oil on behalf of the parent company
- Import and export of diesel, jet fuel, and other fuel oils on behalf of the parent company
- Jet fuel marketing activities with major airline companies across North and South America on behalf of the group company
- Lubricating oil marketing activities on behalf of the group company
- Collection and provision of the latest market information

DAIICHI JITSUGYO (AMERICA), INC



Japanese HQ	DAIICHI JITSUGYO CO., LTD	Industry Classification	Wholesale Trade
Website	https://djausa.com/	Corporate Form in Texas	Subsidiary
Texas Address	1225 North Loop West, Suite 1050. Houston, Texas 77008	Email in Texas	junji.ohmaki@djk.co.jp
Number of Employees	<Texas> 3 <Global> 1,467	Corporate Function in Texas	The U.S. headquarters is located outside of Texas
Year of Establishment	<Texas> 1974 <Japan> 1948	Contact Person in Texas	-
Annual Sales	<Texas> - <Global> JPY221.755 billion (2025)	Texas TEL	713-682-1571

Company and Product/Service Overview, Activities in Texas

- Sales of equipment related to oil and chemical plants
- Export operations to Japan for products for the aerospace and defense industry
- Sales of lithium-ion battery manufacturing equipment
- Sales of other industrial equipment





Daikin Comfort Technologies North America. Inc.

Japanese HQ	Daikin Industries, Ltd.	Industry Classification	Manufacturing
Website	https://daikincomfort.com/	Corporate Form in Texas	Factory
Texas Address	19001 Kermier Rd, Waller TX77484	Email in Texas	-
Number of Employees	<Texas> 13,043 <Global> 103,544	Corporate Function in Texas	The U.S. headquarters is located outside of Texas
Year of Establishment	<Texas> 1975 <Japan> 1934	Contact Person in Texas	Satoru Akama, President & CEO
Annual Sales	<Texas> JPY 1.42569 trillion <Global> JPY 4.7523 trillion	Texas TEL	713-263-5151

Company and Product/Service Overview, Activities in Texas

Daikin provides heating, cooling, ventilation, air purification, low global warming potential (GWP) refrigerants, and connected devices for residential, commercial, and industrial spaces. Our advanced indoor comfort solutions address the need for sustainable, energy-efficient indoor comfort for nearly any climate - today and tomorrow.





ENEOS Americas Inc.

Japanese HQ	ENEOS Corporation	Industry Classification	Energy
Website	https://www.eneos.co.jp/english/	Corporate Form in Texas	Subsidiary
Texas Address	3040 Post Oak Blvd., Suite1625, Houston, TX 77056	Email in Texas	enam-hr@eneosusa.com
Number of Employees	<Texas> 21(as of 10/1/2025) <Global> 7,159(as of 3/31/2025)	Corporate Function in Texas	The U.S. headquarters is located outside of Texas
Year of Establishment	<Texas> 2017 <Japan> 1888	Contact Person in Texas	Administration Group
Annual Sales	<Texas> - <Global> 10,979,695million/FY2024(2024/4-2025/3)	Texas TEL	713-840-1860

Company and Product/Service Overview, Activities in Texas

ENEOS Americas is the principal company in ENEOS Group in North and South America. We expand our various businesses in energy industry as a member of the comprehensive energy company, ENEOS.

- Engaged in business development across the energy sector, including renewable energy initiatives such as Sustainable Aviation Fuel (SAF), Renewable Diesel (RD) and natural gas.
- Trading of crude oil and oil products
- Sales and marketing of basic chemicals
- Marketing of jet & bunker fuels
- Support of ENEOS Corporation’s business activities in North and South America
- Innovative business development and research for cutting-edge technology (Silicon Valley)

ENEOS Xplora USA Limited

Japanese HQ	ENEOS Xplora INC.	Industry Classification	Mining, Quarrying, and Oil and Gas Extraction
Website	https://www.eneos-xplora.com/english/	Corporate Form in Texas	Subsidiary
Texas Address	3040 Post Oak Blvd, Suite 1600, Houston, TX 77056	Email in Texas	-
Number of Employees	<Texas> - <Global> -	Corporate Function in Texas	U.S. headquarters
Year of Establishment	<Texas> 1989 <Japan> 1991	Contact Person in Texas	Naoyuki Ushijima, General Manager, Administration
Annual Sales	<Texas> - <Global> -	Texas TEL	713-260-7400

Company and Product/Service Overview, Activities in Texas

ENEOS Xplora is a principal operating company of ENEOS Group. ENEOS Group's mission is to contribute to the development of our communities and help to ensure a vibrant future through creation and innovation in energy, resources, and materials. We ENEOS Xplora is engaged in upstream business with oil and gas-producing countries across the world.

In the US, we have interests of some oil and gas fields in continental shelf locations to deep water areas in the Gulf of America and onshore. We are carrying out the CO₂-EOR (Enhanced Oil Recovery) project, which involves the capture of CO₂ in the flue gas from a coal-fired power plant in Texas, and the injection of CO₂ into an oil field more than 5 million tons to boost production.





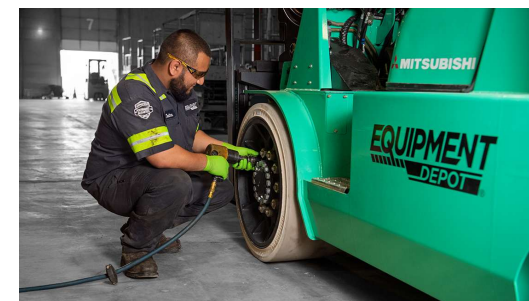
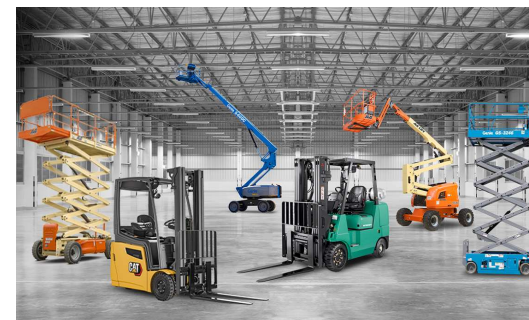
Equipment Depot, Inc.

Japanese HQ	Mitsubishi Logisnext Co., Ltd.	Industry Classification	Wholesale Trade
Website	https://www.eqdepot.com/	Corporate Form in Texas	Subsidiary
Texas Address	16330 Air Center Blvd. Houston, TX 77032	Email in Texas	marketing@eqdepot.com
Number of Employees	<Texas> 1800 <Global> 12,000	Corporate Function in Texas	U.S. headquarters
Year of Establishment	<Texas>1939 <Japan> 1937	Contact Person in Texas	-
Annual Sales	<Texas> USD 880M <Global> JPY 665B	Texas TEL	713-869-6801

Company and Product/Service Overview, Activities in Texas

Equipment Depot is America’s largest independently-operated material handling and rental source. With over 50 locations in 15 states and covering nearly 3,000 miles, we support diverse customers in an array of industries.

We sell, service, and rent forklift/aerial machine/port equipment etc. Recently, we also began providing the solution/automation of logistics and warehousing services. We take a holistic approach to solving operational and supply chain complexities. Blending inhouse expertise with our network of industry partners, we provide integrated warehouse and automation solutions engineered to help customers increase storage space, maximize throughput, improve productivity and lower labor costs.





Gakkyusha U.S.A. Co.,Ltd. d/b/a “ena”

Japanese HQ	Gakkyusha Co., Ltd. d/b/a “ena”	Industry Classification	Educational Services
Website	http://www.ena-kikoku.com/	Corporate Form in Texas	Branch Office
Texas Address	20660 Westheimer Parkway Suite C Katy, TX 77450	Email in Texas	houston@ena-us.com
Number of Employees	<Texas> - <Global> -	Corporate Function in Texas	The U.S. headquarters is located outside of Texas
Year of Establishment	<Texas> 2019 <Japan> 1976	Contact Person in Texas	Satoshi Ikeda
Annual Sales	<Texas> - <Global> -	Texas TEL	281-258-4752

Company and Product/Service Overview, Activities in Texas

Established in 1987, Gakkyusha U.S.A. Co., Ltd. is a wholly owned subsidiary of Gakkyusha Co., Ltd. d/b/a “ena,” that provides an educational program for Japanese pupils aged between 3 and 18 years. Gakkyusha U.S.A. opened its first school in the United States, ena New York, in April 1987. In 2019, we operate 12 schools in seven different states in the United States: New York, New Jersey, Illinois, California, Michigan, Maryland and Texas.

There are tens of thousands of Japanese families living in the U.S., particularly the East Coast, West Coast, and Mid-West. Because of the major differences in the methods and goals between Japanese and American education systems, the children of these families are confronted with great difficulty upon returning to schools in Japan.

Although Japanese children generally adjust well to American schools when they move to the U.S., the opposite is not true upon return to Japan. Thus, especially given the differences in educational goals and methodology between the two education systems, the looming return to Japan has caused great concern to those Japanese parents whose children have been removed from mainstream Japanese education for some time. To fill this need for supplemental Japanese education, we have established preparatory schools that will provide a Japanese educational program for Japanese pupils temporarily living on the East Coast, West Coast, and Mid-West. Our program parallels the curriculum they would have received had they remained in Japan.



Hitachi Industrial Equipment & Solutions America, LLC

Japanese HQ	Hitachi Industrial Equipment Systems Co., Ltd.	Industry Classification	Manufacturing
Website	https://www.hitachi-iesa.com/	Corporate Form in Texas	Subsidiary
Texas Address	3151 Briarpark Drive Suite 1100, Houston TX 77042	Email in Texas	CCS.Info@hitachi-iesa.com
Number of Employees	<Texas> 2 <Global> 80	Corporate Function in Texas	The U.S. headquarters is located outside of Texas
Year of Establishment	<Texas> 2024 <Japan> 2002	Contact Person in Texas	Susumu Yamakawa / General Manager
Annual Sales	<Texas> - <Global> -	Texas TEL	914-524-6600

Company and Product/Service Overview, Activities in Texas

We offer Hitachi Group’s large-scale industrial equipment, including centrifugal compressors used in processes for conventional oil and gas plants, CCS, and green ammonia plants, as well as large pumps for water treatment facilities. In keeping with our purpose, “Creating a Bright Future with the Power of Monozukuri,” we are committed to contributing to a sustainable society by delivering products and services that meet our customers' expectations.

HORIBA Instruments Incorporated, Houston Office

Japanese HQ	HORIBA, Ltd.	Industry Classification	Manufacturing
Website	https://www.horiba.com/en_en/	Corporate Form in Texas	Subsidiary
Texas Address	5390 Bay Oaks Drive, PASADENA, TX 77505	Email in Texas	masahiro.horiba@horiba.com
Number of Employees	<Texas> 74 <Global> 8,955	Corporate Function in Texas	The U.S. headquarters is located outside of Texas
Year of Establishment	<Texas> 1996 <Japan> 1953	Contact Person in Texas	Masahiro Horiba
Annual Sales	<Texas> 234 Million USD <Global> 317.37 Billion JPY	Texas TEL	949-656-0454

Company and Product/Service Overview, Activities in Texas

HORIBA empowers industries and communities across the United States with advanced gas and water measurement technologies that ensure accuracy, reliability, and sustainability. Our comprehensive portfolio covers applications ranging from Continuous Emission Monitoring Systems (CEMS), process and combustion control, waste incineration, greenhouse gas measurement, and semiconductor manufacturing, to ambient air quality monitoring. In the water sector, HORIBA supports municipal, wastewater, drinking, ultrapure, industrial process, environmental, and desalination systems—helping users optimize operations, protect public health, and preserve natural resources.

With decades of analytical expertise and a commitment to innovation, HORIBA delivers proven performance through cutting-edge analyzers, sensors, and integrated monitoring systems designed to meet the most demanding environmental and regulatory requirements. By combining Japanese precision engineering with U.S.-based application support and service, we provide complete measurement solutions that our customers can depend on. HORIBA’s mission is to contribute to a cleaner, safer, and more sustainable society—empowering partners to achieve environmental compliance, energy efficiency, and data transparency for a better tomorrow.





Idemitsu Americas Holdings Corporation

Japanese HQ	Idemitsu Kosan Co.,Ltd.	Industry Classification	Other
Website	https://www.idemitsu.com/en/	Corporate Form in Texas	Subsidiary
Texas Address	800 Gessner Rd., Suite 850, Houston, Texas 77024	Email in Texas	-
Number of Employees	<Texas> 7 <Global> 13,814	Corporate Function in Texas	U.S. headquarters
Year of Establishment	<Texas> 2022 <Japan> 1940	Contact Person in Texas	-
Annual Sales	<Texas> - <Global> About \$60B (2024.4-2025.3)	Texas TEL	-

Company and Product/Service Overview, Activities in Texas

Since establishment in 2020, Idemitsu Americas Holdings has operated in locations including Houston, Texas, and San Jose, California.

We mainly serve the following functions:

1. Americans Regional Headquarters
2. Business Development — including Energy, Corporate Venturing, Carbon Dioxide Removal, Space PV, and Industry–Academia Collaboration
3. Corporate Functions — such as Group Finance and U.S. Expansion Support

IHI Energy Solutions Inc.

Japanese HQ	IHI Corporation	Industry Classification	Plant Engineering
Website	https://ihi-es.com/	Corporate Form in Texas	Subsidiary
Texas Address	16340 Park Ten Place Suite 200, Houston, TX.	Email in Texas	communications@ihi-es.com
Number of Employees	<Texas> 45 <Global> 28,000	Corporate Function in Texas	The U.S. headquarters is located outside of Texas
Year of Establishment	<Texas> 2022 <Japan> 1889	Contact Person in Texas	-
Annual Sales	<Texas> - <Global> -	Texas TEL	832-379-7700

Company and Product/Service Overview, Activities in Texas

IHI Energy Solutions (IES) operates as IHI Group’s Engineering service in the U.S. IES safely operates as an engineering, procurement, and construction management firm. Based in Houston, Texas, IHI Energy Solutions serves the energy industry, with a focus on gas processing, synthesis gas, petrochemicals, refining, power generation, and the low carbon fuel market including ammonia, hydrogen, and carbon capture & utilization. In addition to providing engineering services, IHI Energy Solutions works closely with its parent company to offer in-house engineering design and the procurement of other equipment items such as boiler, gas engines, turbines, tanks, compressors, and separators. At IES, their mission is to deploy the expertise and experience of their global engineering team to provide innovative solutions to the energy industry.





IINO LINES (U.S.A.) INC.

Japanese HQ	IINO KAIUN KAISHA, LTD.	Industry Classification	Other Services (except Public Administration)
Website	https://www.iino.co.jp/kaiun/english/	Corporate Form in Texas	Subsidiary
Texas Address	1800 West Loop South, Suite 1690, Houston, TX 77027	Email in Texas	iinousa@ex.iino.co.jp
Number of Employees	<Texas> 2 <Global> 698	Corporate Function in Texas	U.S. headquarters
Year of Establishment	<Texas> 2014 <Japan> 1899	Contact Person in Texas	Yohei Okumura (Vice President)
Annual Sales	<Texas> - <Global> JPY 141.9 Billion	Texas TEL	713-622-2233

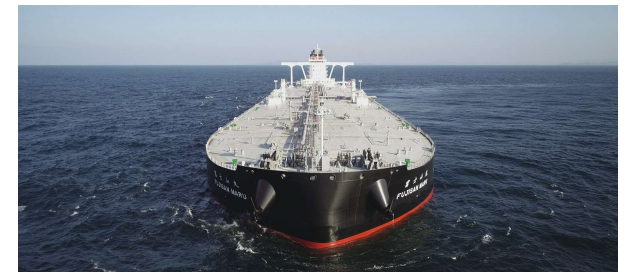
Company and Product/Service Overview, Activities in Texas

IINO KAIUN KAISHA, LTD. is a Japanese corporation operating maritime transportation across a global network.

The history of IINO Japan can be traced back to 1899, when the founder Torakichi Iino began transporting coal by barge at Maizuru Port, Kyoto Prefecture. Now, IINO Group extended into two distinct businesses: the shipping business focusing on the transport of resources and energy and the real estate business engaged in office leasing.

IINO Japan and USA conducts oceangoing shipping business and regional shipping business through its stable supply of a diverse variety of cargo. The IINO Group fleet includes oil tankers, chemical tankers, LNG carriers, LPG carriers, and dry bulk carriers.

IINO Japan also has been providing a full range of real estate services in Tokyo and London, as well as parts of US, including integrated maintenance management.





INPEX USA, Inc.

Japanese HQ	INPEX Corporation	Industry Classification	Mining, Quarrying, and Oil and Gas Extraction
Website	https://www.inpex.com/english/	Corporate Form in Texas	Subsidiary
Texas Address	2800 Post Oak Blvd. STE 2450, Houston, TX 77056	Email in Texas	inpexusa.info@ml.inpex.co.jp
Number of Employees	<Texas> 22 <Global> 3,679	Corporate Function in Texas	U.S. headquarters
Year of Establishment	<Texas> 2003 <Japan> 2006	Contact Person in Texas	-
Annual Sales	<Texas> - <Global> JPY 2,265 billion FY ended Dec 31, 2024	Texas TEL	713-850-8480

Company and Product/Service Overview, Activities in Texas

INPEX USA, Inc., a U.S. subsidiary of INPEX Corporation — Japan’s largest exploration and production company — was established to expand INPEX’s presence and business development in the United States and across the Americas.

As part of INPEX’s global strategy, the company is focusing on clean energy businesses including clean hydrogen and ammonia, carbon capture, utilization and storage (CCUS), renewable energy, and the development of critical minerals such as lithium. INPEX USA also continues to pursue selective gas related opportunities as pragmatic solutions within the ongoing energy transition, contributing to a stable and reliable energy supply.

Guided by its long-term corporate vision, “INPEX Vision 2035,” the company aims to transform itself into a leading energy company that delivers diverse and sustainable energy solutions. The vision outlines INPEX’s commitment to expanding clean energy projects, advancing technology deployment, and building partnerships that accelerate the transition toward a net zero carbon society. In the U.S., INPEX USA will actively pursue opportunities aligned with this vision by investing in various businesses, supporting innovation across the energy value chain, and addressing the dual challenge of reducing emissions while meeting growing energy needs.





Japan Aerospace Exploration Agency (JAXA) Houston Office

Japanese HQ	Japan Aerospace Exploration Agency (JAXA)	Industry Classification	Public Administration
Website	http://global.jaxa.jp/	Corporate Form in Texas	Representative Office
Texas Address	18050 Saturn Lane, Suite 310, Houston, TX 77058	Email in Texas	-
Number of Employees	<Texas> 5 <Global> 1,663 (As of April 1, 2025)	Corporate Function in Texas	The U.S. headquarters is located outside of Texas
Year of Establishment	<Texas> 2003 <Japan> 2003	Contact Person in Texas	NISHIKAWA Takayoshi, Director
Annual Sales	<Texas> - <Global> -	Texas TEL	281-333-5999

Company and Product/Service Overview, Activities in Texas

The Japan Aerospace Exploration Agency (JAXA) is the Japanese government agency responsible for research and development in aviation and space exploration. Our mission is to contribute to solving various domestic and international challenges through the expansion of research and development and utilization in the fields of space and aviation. We strive for technological innovation in the aerospace sector while strengthening our collaboration with industry and society, contributing to the realization of a safer and more prosperous society.

JAXA engages in the following activities :

- Development and operation of transportation systems between Earth and space
- Utilization of space through satellites
- Manned space activities and utilization of the space environment
- Research in space science
- Research in aviation technology
- Research in foundational technologies
- Fund operation



JAXA Houston Office, which covers the southern area of the United States, serves mainly as a liaison office with the NASA Johnson Space Center (JSC). JSC manages human spaceflight programs, to which the JAXA Houston Office offers an extensive range of assistance, including astronaut training, International Space Station operations, utilization, and space experiments.

JAXA's Houston Office also assists technical coordination for the Gateway lunar orbiting platform and crewed pressurized lunar rover, both part of the U.S.-led international space exploration "Artemis Program".

Japan Organization for Metals and Energy Security

Japanese HQ	Japan Organization for Metals and Energy Security	Industry Classification	Public Administration
Website	https://www.jogmec.go.jp/english/index.html	Corporate Form in Texas	Representative Office
Texas Address	One Riverway, Suite 450, Houston, TX 77056	Email in Texas	Houstontx@jogmec.org
Number of Employees	<Texas> 4 <Global> 1059	Corporate Function in Texas	The U.S. headquarters is located outside of Texas
Year of Establishment	<Texas> 2004 <Japan> 2004	Contact Person in Texas	Hiroyuki Ohira, Deputy General Manager, JOGMEC Houston Office
Annual Sales	<Texas> - <Global> -	Texas TEL	713-622-0204

Company and Product/Service Overview, Activities in Texas

JOGMEC is committed to securing stable supplies of resources and energy to Japan and to achieving carbon neutrality. In 7 types of projects - oil and natural gas, hydrogen, CCS, geo-thermal, offshore wind power, metals, and coal - we support Japanese companies in acquiring interests by conducting eight businesses, including geological surveys, marine resource development, technological development, and financial assistance.



JOGMEC's 8 Businesses

- Geological survey**: JOGMEC is exerting its efforts in leading surveys to promote new exploration and development businesses in Japan and overseas.
 - ①Diverse geological survey
 - ②Basin tectonic (BT) exploration
 - ③Basin to the potential of directly geological resources
 - ④Advanced OCS Projects
 - ⑤Basin condition and control geological survey
- Financial assistance**: JOGMEC supports fundraising for independent development projects.
 - ①Early capital and equity guarantee
 - ②Loan
 - ③Financial support
- Stockpiling**: JOGMEC promotes the stockpiling in preparation for the unexpected.
 - ①Stockpiling of petroleum and LPS
 - ②Stockpiling of rare metals
- Resource development**: JOGMEC supports the resource development of Japanese companies with its information capabilities.
 - ①Infrastructure and website
 - ②Seminars and workshops
- Marine resource development**: In order to encourage marine resource development, JOGMEC promotes resource surveys and technological developments aimed at commercialization.
 - ①Offshore hydrate
 - ②Conventional oil and natural gas resources
 - ③New natural resources
- Mine pollution control**: JOGMEC aims to secure essential resources through Japanese technology.
 - ①Technology development and technical support
 - ②Technology & Research Center (TRC)
 - ③World Technology Center
- Mine pollution control**: JOGMEC supports mine pollution control projects to environmental protection.
 - ①See neutralization plant at the abandoned Maruse Mine
 - ②Technology development
 - ③Coal asset management
- Resource diplomacy and international cooperation**: JOGMEC supports Japan's efforts to secure natural resources and energy by strengthening the government-level global network.
 - ①Resource diplomacy
 - ②Mineral Bank of Understanding (MBOU)
 - ③International conferences and events
 - ④International cooperation
 - ⑤Training program



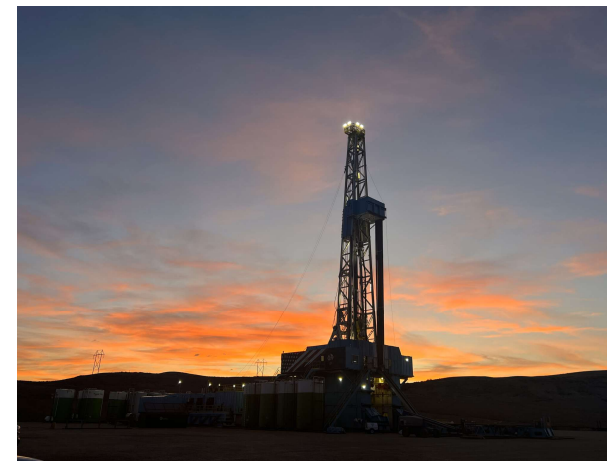
JAPEX (U.S.) Corp.

Japanese HQ	Japan Petroleum Exploration Co., Ltd.	Industry Classification	Mining, Quarrying, and Oil and Gas Extraction
Website	https://www.japex.co.jp/en/	Corporate Form in Texas	Subsidiary
Texas Address	5051 Westheimer Rd. Suite 425, Houston, TX, 77056	Email in Texas	tetsuo.fukuhara@japex.co.jp
Number of Employees	<Texas> 12 <Global> 1,650	Corporate Function in Texas	U.S. headquarters
Year of Establishment	<Texas> 1980 <Japan> 1970	Contact Person in Texas	Tetsuo Fukuhara, CEO
Annual Sales	<Texas> USD 356 Million <Global> JPY 389 Billion	Texas TEL	713-334-9800

Company and Product/Service Overview, Activities in Texas

Japex (U.S.) Corp. (JUS) is a wholly owned subsidiary of Japan Petroleum Exploration Co., Ltd. (JAPEX), a publicly traded company on the Tokyo Stock Exchange. Its principal office is in Houston, Texas.

JUS has been investing in the North American Market for over 40 years across multiple investments in both Offshore and Onshore U.S. (conventional & unconventional). Particularly over the last 3 years, JUS has successfully deployed significant capital into U.S. onshore upstream assets, a CCS and helium project in Wyoming, and an LNG project in Texas. It plans to continue actively investing in the United States.



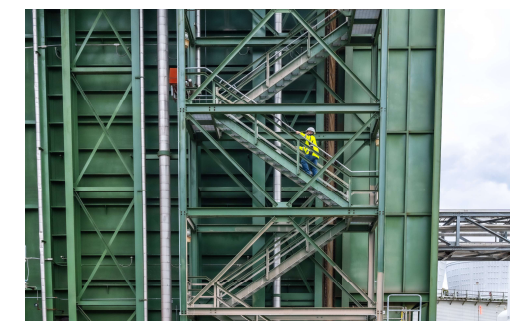
JERA Americas, Inc.

Japanese HQ	JERA Co., Inc.	Industry Classification	Energy
Website	www.jera.co.jp/en/ and www.jeraamericas.com .	Corporate Form in Texas	Subsidiary
Texas Address	1000 Main St., Suite 3100 Houston, TX 77002	Email in Texas	PR@jeraamericas.com
Number of Employees	<Texas> 248 <Global> 6,292	Corporate Function in Texas	U.S. headquarters
Year of Establishment	<Texas> 2013 <Japan> 2015	Contact Person in Texas	Jennifer Mathlouthi
Annual Sales	<Global> 3,356 Billion JPY	Texas TEL	713-980-4120

Company and Product/Service Overview, Activities in Texas

JERA Americas is a leader in power and fuels, delivering sustainable, affordable, and reliable energy to support economic growth and energy security. We repurpose and optimize existing thermal power assets to deliver more sustainable energy to U.S. businesses and communities.

As the U.S. subsidiary of Tokyo-based JERA, we also work closely with JERA’s renewables arm, JERA Nex, which owns and operates a portfolio of onshore renewable assets including wind, solar, and battery storage assets in Europe, Asia, and North America. JERA, which stands for Japan’s Energy for a New Era, produces about 30% of all electricity in Japan.



JETRO Houston

Japanese HQ	JETRO (Japan External Trade Organization)	Industry Classification	Public Administration
Website	https://www.jetro.go.jp/usa/contact/jetrohut.html	Corporate Form in Texas	Other
Texas Address	1221 McKinney St #4141, Houston, TX 77010	Email in Texas	Ingu-hou@jetro.go.jp
Number of Employees	<Texas> 8 <Global> 1,925 (2025.4)	Corporate Function in Texas	The U.S. headquarters is located outside of Texas
Year of Establishment	<Texas> 1969 <Japan> 1958	Contact Person in Texas	Saki Sasagawa, Director of business development
Annual Sales	-	Texas TEL	713-759-9595

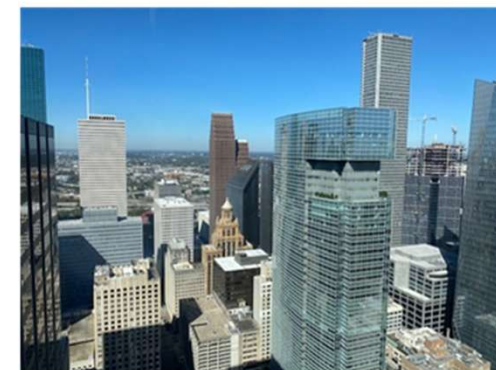
Company and Product/Service Overview, Activities in Texas

JETRO, or the Japan External Trade Organization, is a Japanese governmental organization that works to promote mutual trade and investment between Japan and the rest of the world.

JETRO Houston was established in 1969, the year the world was thrilled by mankind first landing on the surface of the moon. For more than 50 years, we have helped connect businesses in Texas and Japan.

If you're thinking about doing business with Japan, our motto is: talk to JETRO First.

- We convey the appeal of doing business in Texas, and cities throughout the state, to Japanese companies. We also support Japanese companies entering Texas.
- We support Texas companies related to new technologies, cutting-edge industries, life sciences, renewable energy, and other innovative technologies or ideas to enter Japan.
- We support Texas companies interested in open innovation with Japanese companies.
- We introduce Texas companies interested in selling Japanese agricultural products, alcohol, daily necessities, or similar goods that are increasing in popularity in the US to Japanese partners.





Kaneka Americas Holding, Inc. / Kaneka North America LLC

Japanese HQ	Kaneka Corporation	Industry Classification	Manufacturing
Website	https://www.kaneka.com/kaneka-americas	Corporate Form in Texas	Subsidiary
Texas Address	6161 Underwood Road, Pasadena, Texas 77507	Email in Texas	info@kaneka.com
Number of Employees	<Texas> - <Global> -	Corporate Function in Texas	U.S. headquarters
Year of Establishment	<Texas> 1982 <Japan> 1949	Contact Person in Texas	Naoto Nakajima, CFO & Corporate Secretary
Annual Sales	<Texas> - <Global> -	Texas TEL	281-474-7084

Company and Product/Service Overview, Activities in Texas

Established in 2012 as the regional headquarters for North & South America. Its subsidiaries include Kaneka North America LLC (1984~, Texas), producing specialty polymers and nutritional ingredients like CoQ10, and Kaneka Medical America LLC (1997~, NY), selling medical devices. In 2016, Kaneka US Innovation Center was founded in California for healthcare and electronics materials development.

The group expanded with Cemedine North America LLC (Ohio, adhesives) in 2016 and Kaneka Aerospace LLC (California, composite materials) in 2017.



Kanematsu USA

Japanese HQ	Kanematsu Corporation	Industry Classification	Wholesale Trade
Website	https://kanematsuusa.com/	Corporate Form in Texas	Subsidiary
Texas Address	1800 Augusta Dr., Suite 390, Houston, TX 77057	Email in Texas	takiyama@kanematsuusa.com
Number of Employees	<Texas> 10 <Global> 7,296	Corporate Function in Texas	The U.S. headquarters is located outside of Texas
Year of Establishment	<Texas> 1961 <Japan> 1889	Contact Person in Texas	Toshi Akiyama
Annual Sales	<Texas> - <Global> USD 7,150 Million (2024.4-2025.3)	Texas TEL	713-975-7200

Company and Product/Service Overview, Activities in Texas

Kanematsu Group provides a broad array of products and service through extensive business operations centered on Electronics & Devices, Foods, Meat & Grain, Steel, Materials & Plant, and Motor Vehicles & Aerospace.

At Houston branch, we focus on supplying Japanese steel products. We represent Japanese steel mills for their sales here. Import large volume of steel products directly from Japan, and deliver to customers throughout US and Canada.

We also make investment in steel processing, distribution, end use and innovative technology. Our investment is to expand business together with our partners and add more values to our products and services.

One of our Joint Ventures, Benoit Premium Threading has plants in Ennis, TX and Houma, Louisiana.
<https://benoit-inc.com/>



KDDI America, Inc.

Japanese HQ	KDDI Corporation	Industry Classification	Information
Website	https://us.kddi.com/	Corporate Form in Texas	Branch Office
Texas Address	3900 Essex Ln, Suite 605, Houston, TX 77027	Email in Texas	y.ueno@kddia.com
Number of Employees	<Texas> 13 <Global> 64,636	Corporate Function in Texas	The U.S. headquarters is located outside of Texas
Year of Establishment	<Texas> 2019 <Global> 1953	Contact Person in Texas	Yuichiro Ueno, General Manager
Annual Sales	<Texas> - <Global> 39.6 Billion USD (Mar 2025)	Texas TEL	469-318-1547

Company and Product/Service Overview, Activities in Texas

KDDI America, Inc. is the U.S. subsidiary of KDDI Corporation, a Fortune Global 500 company with a global presence in over 100 locations worldwide. Established in 1989, KDDI America provides a wide range of ICT solutions and digital transformation (DX) services to corporate clients across the Americas.

Our core strengths include network and cloud infrastructure, managed IT services, and cybersecurity. We also provide end-to-end support for office and factory buildouts, including structured cabling, wireless LAN, security camera systems, conference room AV, and furniture coordination—from planning to on-site installation.

In addition to traditional ICT services, KDDI America supports customers with the integration of AI, IoT, and advanced analytics platforms, enabling smarter operations and data-driven business decisions. These offerings are tailored to meet the unique needs of each customer across a wide range of industries.

Headquartered in New York, KDDI America operates offices across the US, including Los Angeles, Chicago, Houston, and Plano—delivering local support backed by global expertise.

Office Location in the US



Business Portfolio





KITZ Corporation of America

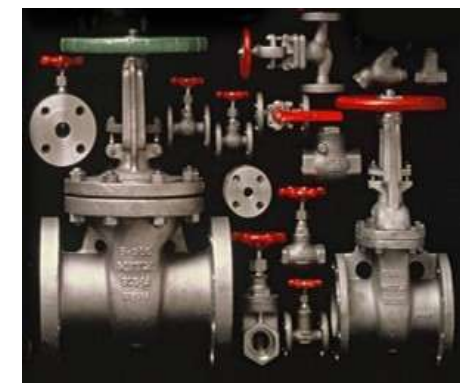
Japanese HQ	KITZ Corporation	Industry Classification	Wholesale Trade
Website	https://kitzus-kca.com/	Corporate Form in Texas	Subsidiary
Texas Address	12855 S Kirkwood Road #200, Stafford, TX 77477	Email in Texas	info@kitz.com
Number of Employees	<Texas> 42 <Global> 5,415	Corporate Function in Texas	U.S. headquarters
Year of Establishment	<Texas> 1984 <Japan> 1951	Contact Person in Texas	-
Annual Sales	<Texas> USD 67.4 million (2024) <Global> JPY 172.0 billion (2024)	Texas TEL	800-772-0073

Company and Product/Service Overview, Activities in Texas

KITZ Corporation of America is a subsidiary of KITZ Corporation, one of the world's leading manufacturers of valves.

Major products include Carbon Steel, Stainless Steel, Gray Iron and Ductile Iron, bronze and brass valves, and actuators. To maintain product quality and delivery, KITZ continues to upgrade its production systems including the use of in-house foundries.

KITZ Corporation of America handles all marketing and sales responsibilities for the Western hemisphere.





Kobelco Construction Machinery U.S.A. INC.

Japanese HQ	Kobelco Construction Machinery , INC.	Industry Classification	Wholesale Trade
Website	https://kobelco-usa.com	Corporate Form in Texas	Subsidiary
Texas Address	22350 Merchants Way, Katy, TX 77449	Email in Texas	morita.katsuhiko@kobelco.com
Number of Employees	<Texas> - <Global> 6,894 (2025/03/31)	Corporate Function in Texas	U.S. headquarters
Year of Establishment	<Texas> 2001 <Japan> 1999	Contact Person in Texas	Morita Katsuhiko
Annual Sales	<Texas> - <Global> JPY 388 Billion (2024)	Texas TEL	281-888-8430

Company and Product/Service Overview, Activities in Texas

KOBELCO is widely recognized for its exceptional expertise in construction machinery, particularly its high-quality lines of excavators and crawler cranes.

The excavator division offers a comprehensive range of models, from compact 3,000-pound machines to robust 185,000-pound units. These include specialized models such as zero tail swing, long reach, and demolition models, each designed to meet diverse operational needs. KOBELCO excavators are celebrated for their advanced technologies, featuring innovative noise and dust reduction systems that enhance worksite conditions. Their advanced hydraulic circuitry significantly reduces pressure loss, contributing to superior fuel efficiency and lower operational costs, making them a preferred choice in the industry.

The crane division specializes in the crawler crane market, offering a selection of models ranging from 80 to 330 tons. These cranes are engineered for maximum efficiency, comfort, durability, and productivity, ensuring they deliver the lowest cost of ownership in the industry.

KOBELCO provides comprehensive parts and service support for both divisions to ensure customer satisfaction and reliability. As part of Kobelco Construction Machinery Co., Ltd., and Kobe Steel, KOBELCO is committed to delivering innovative and high-quality machinery solutions to meet the evolving needs of the construction and industrial sectors.





Kobelco Welding of America, Inc.

Japanese HQ	Kobe Steel, Ltd.	Industry Classification	Wholesale Trade
Website	https://www.kobelcowelding.com/	Corporate Form in Texas	Subsidiary
Texas Address	4755 Alpine Rd. Suite 250 Stafford, TX 77477	Email in Texas	morimoto.fumitake@kobelco.com
Number of Employees	<Texas> 23 <Global> 38,050	Corporate Function in Texas	The U.S. headquarters is located outside of Texas
Year of Establishment	<Texas> 1990 <Japan> 1905	Contact Person in Texas	Fumitake Morimoto, President
Annual Sales	<Texas> USD 50 Mil (2024) <Global> USD 17 Bil (2024)	Texas TEL	281-240-5600

Company and Product/Service Overview, Activities in Texas

Kobelco Welding of America, Inc. (KWAI) was established in Houston, Texas in 1990 as a wholesale company owned by Kobe Steel USA Holdings for marketing Kobelco welding consumables in North America and Latin America. Since KWAI launched its business, it has worked closely with all of its customers through quality services both in sales activities and technical support.

KWAI has earned rapid growth led by its excellent reputation and the distributor's sales network expansion nationwide. Today, more than 300 distributors are stocking Kobelco welding wires, mostly flux-cored wires, supplied from KWAI. KWAI's stainless steel flux cored wires have earned the largest market share, 40%, in the North American market. KWAI has been pursuing customer satisfaction, through activities based on the business slogan QTQ (Quality products, Technical support and Quick delivery), targeting a higher market share.

Furthermore, KWAI is expanding welding robot "ARCMAN" business in North America. KOBELCO is the only welding solution company that develops all of its own original welding consumables, welding robots, and welding power sources, aims to be your best partner for heavy steel fabrication, including structural steel, bridges, construction machinery, shipbuilding fabrication, etc.





Kuraray America, Inc.

Japanese HQ	Kuraray Co., Ltd.	Industry Classification	Chemical
Website	www.kuraray.us.com	Corporate Form in Texas	Subsidiary
Texas Address	3700 Bay Area Blvd., Suite 680, Houston, TX, 77058	Email in Texas	KAI.Marketing@Kuraray.com
Number of Employees	<Texas> - <Global> 11,941	Corporate Function in Texas	U.S. headquarters
Year of Establishment	<Texas>1986, <Japan> 1926	Contact Person in Texas	-
Annual Sales	<Texas> - <Global> JPY 826.9 Billion (2024)	Texas TEL	800-423-9762

Company and Product/Service Overview, Activities in Texas

Kuraray is a leading global specialty chemical company that pioneers, manufactures and sells resins, chemicals, activated carbon, fibers, textiles, specialty dental materials and other highly functional products that improve the environment and enhance quality of life throughout the world. The company’s diverse product portfolio provides critical solutions for industries such as automotive, agriculture, aerospace, paper and packaging, oil & gas, medical and consumer goods.

Founded in 1926, Kuraray operates in 32 countries and regions. Its North America subsidiary, Kuraray America, Inc. (KAI), was founded in 2008 and is headquartered in Houston. Kuraray America operates top-of-the-line production and research facilities in Texas, North Carolina, South Carolina and West Virginia. The North American division produces nearly 80% of its extensive product portfolio domestically, emphasizing Kuraray’s deep commitment to local production.

Sustainability is at the heart of Kuraray America’s product innovation and operational excellence – from its use of renewable and recyclable feedstocks to instituting circular economy practices at its sites. Guided by three pillars—people, product and planet—the company is committed to safety, excellence and environmental responsibility. www.kuraray.us.com.





Kureha America Inc.

Japanese HQ	Kureha Corporation	Industry Classification	Wholesale Trade, Management of Companies and Enterprises
Website	https://www.kureha.co.jp/en/	Corporate Form in Texas	Subsidiary
Texas Address	3151 Briarpark Drive, Suite 1025, Houston, TX 77042	Email in Texas	j.lee@kureha.com
Number of Employees	<Texas> 25 <Global> 4,017	Corporate Function in Texas	U.S. headquarters
Year of Establishment	<Texas> 1990 <Japan> 1944	Contact Person in Texas	Juhee Lee
Annual Sales	<Texas> - <Global> 1083MM (March 2025)	Texas TEL	-

Company and Product/Service Overview, Activities in Texas

Kureha America Inc. is a holding company of Kureha U.S. Group, which consists of two subsidiaries — Kureha PGA LLC, which manufactures Polyglycolic acid (“PGA”), and Kureha Energy Solutions LLC, which sells degradable downhole tools used in oil and gas fields. Kureha America Inc. also has a function as a trading company that sells a variety of chemical products manufactured by our parent and affiliated companies.

Our product portfolio includes Seaguar(Fluorocarbon Fishing Line), Microspheres, Carbon Fiber, Krehalon (Food Packaging), and KF Polymer (PVDF). We have been operating our warehouse in KY since 2018 to improve customer satisfaction. In addition, Kureha America Inc. launched a new team called the “New Business Creation Team” in 2019. The goal of the team is to find innovative businesses in various industries such as Energy, Life science, Agricultural, etc. by collaborating with universities or companies with state-of-the-art technology.

Kureha Energy Solutions LLC

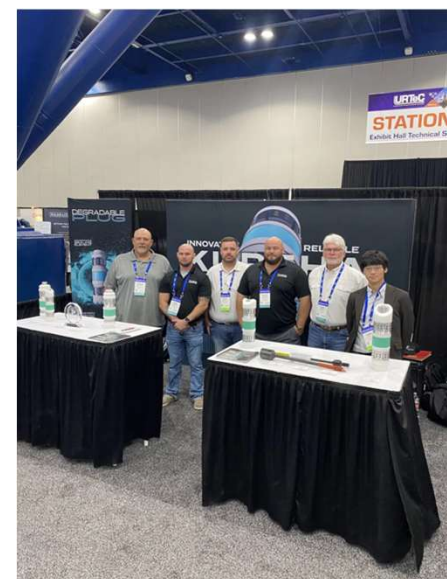
Japanese HQ	Kureha Corporation	Industry Classification	Mining, Quarrying, and Oil and Gas Extraction
Website	https://kurehadegradableplug.com/	Corporate Form in Texas	Subsidiary
Texas Address	3151 Briarpark Drive, Suite 1050, Houston, TX, 77042	Email in Texas	KES_Contact@kureha.com
Number of Employees	<Texas> 32 <Global> 4,017	Corporate Function in Texas	The U.S. headquarters is located outside of Texas
Year of Establishment	<Texas> 2016 <Japan> 1944	Contact Person in Texas	-
Annual Sales	<Texas> - <Global> 1083MM (March 2025)	Texas TEL	713-893-0730

Company and Product/Service Overview, Activities in Texas

Kureha Energy Solutions LLC has been established to market and sell polyglycolic acid (“PGA”) downhole tools used in oil and gas fields in the Americas. Headquartered in Houston, Texas, we have multiple representatives and warehouses in major shale plays area.

An outstanding feature of our products is the degradability. While conventional tools made of non-degradable materials need to be removed from the well after usage, our products degrade in the well. We contribute to oil & gas operators significantly, generating an extra value by reducing cost, time and risk during the well completion process. Moreover, we provide technical support and services to ensure the products are used suitably at well locations.

Collaborating with Kureha Corporation, who manufactures and assembles our products, we are continuously gaining an exceptional reputation for such services based on our specialized technical knowledge. We will continue contributing our unique value to the energy industry by taking advantage of our integrated innovation from raw materials to tools.



Logisnext Americas Inc.

Japanese HQ	Logisnext Co., Ltd.	Industry Classification	Wholesale Trade
Website	https://www.logisnextamericas.com/en/logisnext	Corporate Form in Texas	Subsidiary
Texas Address	2121 W Sam Houston Parkway N, Houston, TX 77043	Email in Texas	-
Number of Employees	<Texas> 1000 <Global> 12,000	Corporate Function in Texas	U.S. headquarters
Year of Establishment	<Texas> 1992 <Japan> 1937	Contact Person in Texas	Masataka Ohya
Annual Sales	<Texas> - <Global> 391Billion JPY (2021)	Texas TEL	-

Company and Product/Service Overview, Activities in Texas

Logisnext Americas is one of the world's leading manufacturers and providers of material handling, automation and fleet solutions. Our purpose is to help our customers by partnering together to streamline their material handling processes and reinvent the way they move and transport goods.

Our customers have relied on our quality products for more than a century. Headquartered in Houston, Texas, Logisnext Americas is part of Logisnext Company in Kyoto, Japan.

With a rich history of proven products and solutions, we are at the forefront of industry technology innovation and progression. Learn more about the milestones that made us who we are today.





Marubeni America Corporation (Houston Branch)

Japanese HQ	Marubeni Corporation	Industry Classification	Wholesale Trade
Website	https://www.marubeni.com/en/	Corporate Form in Texas	Branch Office
Texas Address	945 Bunker Hill Rd, Suite 550, Houston, TX 77024	Email in Texas	Takehara-M@marubeni.com
Number of Employees	<Texas> 18 <Global>45,470	Corporate Function in Texas	The U.S. headquarters is located outside of Texas
Year of Establishment	<Texas> 1951 <Japan> 1858	Contact Person in Texas	Masaru Takehara, General Manager
Annual Sales	<Texas> - <Global> -	Texas TEL	713-871-5710

Company and Product/Service Overview, Activities in Texas

Marubeni America Corporation headquartered in New York, is a general trading and investment company, which is wholly owned by Marubeni Corporation in Japan. Houston Branch focuses on trading and investment activities in the areas of chemical and energy. Our group companies listed below are located in Texas;

- Marubeni Oil & Gas LLC, Oil & gas exploration and production
- MIECO LLC, Petroleum and natural gas trading
- Marubeni Natural Gas & LNG America Corp, Operation for tolling business at natural gas liquefaction project and LNG export
- XL Parts, Wholesale distributor of automotive parts
- Marubeni Transport Service Corp., Third party logistics service provider





Meiko America, Inc. Houston Branch

Japanese HQ	MEIKO TRANS CO.,LTD.	Industry Classification	Transportation and Warehousing
Website	https://www.meiko-trans.co.jp/en	Corporate Form in Texas	Subsidiary
Texas Address	363 N Sam Houston Pkwy E, Suite 770 Houston, TX 77060	Email in Texas	meikohou@meikoamerica.com
Number of Employees	<Texas> 15 <Global> 1,900	Corporate Function in Texas	The U.S. headquarters is located outside of Texas
Year of Establishment	<Texas> 1980 <Japan> 1949	Contact Person in Texas	Tatsuma Yamanaka - Branch Manager
Annual Sales	<Texas> - <Global> -	Texas TEL	281-590-5252

Company and Product/Service Overview, Activities in Texas

We are Global Logistics experts that specialize in services such as Sea & Air Freight, Land Transportation, Customs Clearance, Tax Exemptions & Refunds, Special License Arrangements, and Warehousing. Utilizing our vast network of international Meiko branches and trusted appointed agencies around the globe, we are perfectly equipped to accept worldwide exports and imports.

As a result of ever-growing international trade activity, customer's needs for domestic and international logistics are becoming more diverse and complex. To meet these constantly changing demands, Meiko America, Inc. has developed a global logistics network with the capability of serving land, sea and air.

Mitsubishi Corporation (Americas)

Japanese HQ	Mitsubishi Corporation	Industry Classification	Trading and Investing
Website	https://www.mitsubishicorp.com/jp/en/	Corporate Form in Texas	Branch Office
Texas Address	1221 McKinney St. Suite 3500 Houston Texas 77010	Email in Texas	nobukazu.shimada@mitsubishicorp.com
Number of Employees	<Texas> 265 <Global> 62,062	Corporate Function in Texas	The U.S. headquarters is located outside of Texas
Year of Establishment	<Texas> 1959 <Japan> 1954	Contact Person in Texas	Nobukazu Shimada, Regional Strategy, Director
Annual Sales	<Texas> - <Global> US\$129,587 Million as revenues (2024)	Texas TEL	832-973-3114

Company and Product/Service Overview, Activities in Texas

Mitsubishi Corporation (Americas) is a wholly-owned U.S. subsidiary of Mitsubishi Corporation, an integrated trading and investment company that develops and operates businesses across multiple industries together with its global network.

Our business segments include: Environmental Energy, Materials Solution, Mineral Resources, Urban Development & Infrastructure, Mobility, Food Industry, Smart-Life Creation, and Power Solution.

As a company with ties to many industries and markets, we create sustainable businesses by leveraging the expertise we have developed and the industry relationships we have cultivated over many years.

We add value as a business partner through our ability to finance and invest in the development of companies and projects. We invest strategically across value chains to develop businesses that meet the needs of a changing world.

In Texas, we have a long history of doing business in the energy and petrochemical fields, and in recent years have expanded the business to more fields.

Our major subsidiaries in Texas include: Diamond Gas North America Corporation, CIMA Energy, LLP (Environmental Energy); Diamond Generating Corporation, Boston Energy Trading and Marketing, LLC (Power Solution); Diamond Realty Investment Inc. (Urban Development and Infrastructure); and Sesaco Corporation (Food Industry).





Mitsubishi Heavy Industries America

Japanese HQ	Mitsubishi Heavy Industries, Ltd.	Industry Classification	Manufacturing
Website	https://www.mhi.com/company/regions/amer	Corporate Form in Texas	Subsidiary
Texas Address	3009 Post Oak Blvd, Suite 1100, Houston, TX 77056	Email in Texas	-
Number of Employees	<Texas> 2,130 (MHI Group) <Global> 77,270	Corporate Function in Texas	U.S. headquarters
Year of Establishment	<Texas> 2016 <Global> 1870	Contact Person in Texas	-
Annual Sales	<Texas> USD 488 million / FY2024 (MHI Group) <Global> USD 31 billion / FY2024	Texas TEL	346-308-8800

Company and Product/Service Overview, Activities in Texas

As a global leader in engineering and manufacturing, Mitsubishi Heavy Industries (MHI) delivers innovative and integrated solutions across a wide range of industries from commercial aviation and transportation to power plants and gas turbines, and from machinery and infrastructure to integrated defense and space systems.





Mitsubishi Logistics America Corporation

Japanese HQ	Mitsubishi Logistics Corporation	Industry Classification	Transportation
Website	www.mlac.com	Corporate Form in Texas	-
Texas Address	480 N. Sam Houston Pkwy. E. #103, Houston, TX 77060	Email in Texas	-
Number of Employees	<Texas> 7 <Global> -	Corporate Function in Texas	The U.S. HQ is located outside of Texas
Year of Establishment	<Texas> 1981 <Japan> 1887	Contact Person in Texas	-
Annual Sales	<Texas> - <Global> -	Texas TEL	-

Company and Product/Service Overview, Activities in Texas

Mitsubishi Logistics America Corporation (MLA) is a wholly owned subsidiary of Mitsubishi Logistics Corporation which has been one of the leading providers of logistics services in Japan for over 130 years.

MLA is engaged in air and ocean freight forwarding business as an International Freight Forwarder and a Non-Vessel Operating Common Carrier (NVOCC) licensed by the Federal Maritime Commission (FMC).

MLA is also a member of multiple trade associations, as well as a certified member of the Customs-Trade Partnership Against Terrorism (C-TPAT).

MLA was founded in 1972, and now having its principal office in New York, has branch offices in the United States in; JFK, Atlanta, Miami, Chicago, Houston, Los Angeles, San Francisco and also has one office in Mexico, Irapuato. MLA currently operates its own warehouse in Los Angeles and Miami.

MLA provides complete selection of international transportation services with the capability and resources to meet all our customers' needs in global forwarding and logistics through our extensive network of Mitsubishi Logistics group companies and affiliates.



Mitsui & Co. (U.S.A.), Inc.

Japanese HQ	MITSUI & CO., LTD.	Industry Classification	Wholesale Trade
Website	https://www.mitsui.com/jp/en/	Corporate Form in Texas	Subsidiary
Texas Address	1300 Post Oak Blvd. Suite 1700, Houston, TX 77056	Email in Texas	Ke.Asano@mitsui.com
Number of Employees	<Texas> 61 (March 2025) <Global> 56,400 (March 2025)	Corporate Function in Texas	The U.S. headquarters is located outside of Texas
Year of Establishment	<Texas> - <Japan> 1959	Contact Person in Texas	Kenichi Asano SVP, Southern States Regional Officer & Divisional Operating Officer (Chemical Div.)
Annual Sales	<Texas> - <Global> USD 97.7 Billion (March 2025)	Texas TEL	713-236-6100

Company and Product/Service Overview, Activities in Texas

Mitsui & Co., Ltd., Mitsui USA is engaged in business investment, project development and management, capital goods leasing and technology transfer, in addition to traditional businesses of a sogo shosha (general trading company) such as import, export, off-shore trade and domestic wholesale.

The Houston office is the second largest Mitsui USA office after the headquarters in New York City. The office plays a significant role in supporting and expanding businesses, especially in energy, chemicals, Infrastructure, steel, and mobility industries, sometimes in close alliance with Mitsui & Co. group companies.

The Energy Division focuses on business development to achieve energy transition, in addition to conventional energy businesses. The chemical division produces, trades, distributes and invests in basic petrochemicals (e.g. olefins, aromatics, and industrial chemicals), chlor-alkali, methanol and ammonia. The Infrastructure Projects Div. acts as “Business Developer” and Energy Transition Enabler” in renewable energy/new downstream, new energy, hydrocarbon and social infra domains to address diversified social needs. The steel division engages in trading of the variety of steel materials and parts for energy industries and infrastructure industries and providing related services. The mobility business division promotes a steady supply of transportation infrastructure in the fields of shipping.



Mitsui & Co. Energy Marketing and Services (USA), Inc.

Japanese HQ	Mitsui & Co., Ltd.	Industry Classification	Wholesale Trade
Website	https://www.mems-usa.com/	Corporate Form in Texas	Subsidiary
Texas Address	1300 Post Oak Blvd., Suite 1900, Houston, Texas 77056	Email in Texas	Y.Horie@mems-usa.com
Number of Employees	<Texas> 91 <Global> 91	Corporate Function in Texas	U.S. headquarters
Year of Establishment	<Texas> 2011 <Japan> 1947	Contact Person in Texas	Yoshiaki Horie CSO
Annual Sales	<Texas> - <Global> -	Texas TEL	713-904-5967

Company and Product/Service Overview, Activities in Texas

Mitsui & Co. Energy Marketing and Services (MEMS) was established in 2011 in Houston as Mitsui’s U.S. energy platform company. We engage in trading, marketing, and asset management across multiple commodities — natural gas, LNG, crude oil, power, and new energies — while collaborating closely with Mitsui group companies to expand our business and enhance value creation.

Our natural gas team plays a central role in this platform, managing marketing and supply for Mitsui’s U.S. energy assets. We market production from key basins and secure feed gas for the Cameron LNG project, as well as supply for Mitsui’s methanol operations in Texas. In addition, we actively trade across U.S. markets and strengthen Mitsui’s global energy value chain and expand opportunities across the industry.

In the power sector, MEMS has built a vertically integrated model spanning generation to retail, enhancing competitiveness in the North American market. By combining physical assets with advanced market operations, we deliver reliable and sustainable energy solutions.

Driven by a diverse and open culture, MEMS continues to embrace new challenges toward a sustainable future. Leveraging the collective strength of the Mitsui & Co. Group, we aim to lead the transformation of the energy industry in North America and beyond.





Mitsui E&P USA LLC

Japanese HQ	Mitsui & Co., Ltd.	Industry Classification	Mining, Quarrying, and Oil and Gas Extraction
Website	https://www.mitsui-ep.com/	Corporate Form in Texas	Subsidiary
Texas Address	1300 Post Oak Blvd., Suite 1800, Houston, TX, 77056	Email in Texas	-
Number of Employees	<Texas> 87 <Global> -	Corporate Function in Texas	U.S. headquarters
Year of Establishment	<Texas> 2010 <Japan> 1947	Contact Person in Texas	Hiroshi Toyoda, EVP/CAO/CCO/Company Secretary
Annual Sales	<Texas> - <Global> -	Texas TEL	713-960-0023

Company and Product/Service Overview, Activities in Texas

Mitsui E&P USA LLC (MEPUSA), a subsidiary of Mitsui & Co., Ltd., is an oil and gas exploration and production company headquartered in Houston, Texas. MEPUSA participates in shale oil/gas upstream projects in the USA. Marcellus project in Pennsylvania and the Eagle Ford (Comanche) project in western Texas, both as a non-operator. The Vaquero project in western Texas and the Tatonka project in northern Texas, both as an operator.

Also MEPUSA has lease contracts for access to pore space in the CO2 storage lease, offshore Corpus Christi, Texas, as a non-operator.





Mizuho Bank, Ltd.

Japanese HQ	Mizuho Bank, Ltd.	Industry Classification	Finance and Insurance
Website	https://www.mizuhogroup.com/americas	Corporate Form in Texas	Representative Office
Texas Address	909 Fannin St. Suite 1600 Houston, TX 77010	Email in Texas	ryosuke.higashi@mizuhogroup.com
Number of Employees	<Texas> 56 <Global> 66,000	Corporate Function in Texas	The U.S. headquarters is located outside of Texas
Year of Establishment	<Texas> 2005 <Japan> 1873	Contact Person in Texas	Ryosuke Higashi
Annual Sales	<Texas> - <Global> 9,030,374 million (JPY) (2025/03)	Texas TEL	713-499-4810

Company and Product/Service Overview, Activities in Texas

Mizuho is one of the largest financial institutions in the world offering a broad range of financial services in more than 110 offices in 40 countries with over 150 years of banking experience. Mizuho has eight locations in the U.S., Houston and Dallas Representative Office opened in 2005 and 2018, respectively. We provide comprehensive financial services focusing on lending, deposits and transaction banking services as well as leasing, derivatives and various advisory services in cooperation with group companies such as Mizuho Securities.

Mizuho aims to remain as a reliable presence for our clients within an ever-changing world, continuing to serve as their best financial solutions partner and we promise to support the business expansion for all clients.





MODEC America, Inc.

Japanese HQ	MODEC, Inc.	Industry Classification	Mining, Quarrying, and Oil and Gas Extraction
Website	https://www.modec.com/	Corporate Form in Texas	Subsidiary
Texas Address	15375 Memorial Drive, Suite 800, Houston, Texas 77079	Email in Texas	Ryo.Ogino@modec.com
Number of Employees	<Texas> 158 <Global> 6,399	Corporate Function in Texas	U.S. headquarters
Year of Establishment	<Texas> 1972 <Japan> 1968	Contact Person in Texas	Ryo OGINO
Annual Sales	<Texas> 201 MUSD (2024) <Global> 4,186 MUSD (2024)	Texas TEL	281-529-8100

Company and Product/Service Overview, Activities in Texas

MODEC started from the joint venture company funded by Mitsui Shipbuilding Co., Ltd.(current Mitsui E&S Holdings Co., Ltd.) and Mitsui & Co., Ltd. in 1968. Since ex-MODEC was dissolved in 1988, new-MODEC took over the business of offshore Oil & Gas production facilities, such as Floating Production, Storage and Offloading (FPSO) units.

MODEC is headquartered in Japan with its main subsidiaries in USA, Brazil, Singapore and Malaysia, and provides International Oil & Gas companies with a total service seamlessly from Engineering, Procurement, Construction, Installation & Commissioning (EPCIC) through safe long-term Lease and Operation & Maintenance (O&M) services especially for FPSO units worldwide.

Taking advantage of the fact lots of headquarters or subsidiaries of Oil & Gas companies are located in Houston, main activities by MODEC America, Inc. are Business Development for floating facilities, including New Business such as Floating Offshore Wind (FOW), Carbon Capture and Storage (CCS), Ammonia FPSO etc., and Project Development with basic engineering. In addition, MODEC also provides the EPC for Mooring Solutions worldwide through its subsidiary called SOFEC, Inc. headquartered in Houston.





MOL (Americas) LLC

Japanese HQ	Mitsui O.S.K. Lines, Ltd.	Industry Classification	Shipping, Transportation, Infrastructure
Website	https://www.mol.co.jp/en/index.html	Corporate Form in Texas	Subsidiary
Texas Address	1400 Post Oak Blvd, Suite1100, Houston TX 77056	Email in Texas	daisuke.yoshino@molgroup.com
Number of Employees	<Texas> 8 <Global> 10,500	Corporate Function in Texas	The U.S. headquarters is located outside of Texas
Year of Establishment	<Texas> 2002 <Japan> 1884	Contact Person in Texas	Daisuke Yoshino / General Manager, Regional Strategy Office and Energy Projects
Annual Sales	<Texas> - <Global>	Texas TEL	732-306-3368

Company and Product/Service Overview, Activities in Texas

MOL Houston plays a pivotal role in energy transportation and business development across North and South America. Our LNG/Offshore team supports U.S. shale gas exports by providing operational and technical expertise for LNG carriers. Leveraging our extensive experience in energy logistics, we are also expanding into offshore projects, including FPSO (Floating Production, Storage, and Offloading) and FSRU (Floating LNG Storage and Regasification Unit) operations, particularly in Central and South America.

Our Tanker team specializes in the transportation of crude oil, petroleum products, LPG, methanol, and is actively developing new business areas such as ammonia, hydrogen, and liquefied CO₂, aligning with global decarbonization trends.

Sharing our office is MOL Chemical Tankers America, which manages the ocean transport of liquid chemical cargoes. As MOL group, we offer a comprehensive range of marine transport solutions for liquid chemicals, enhancing our ability to meet diverse customer needs.

As part of the MOL Group, we are committed to contributing to a sustainable future by leveraging our maritime expertise to develop clean energy-related businesses and support the global energy transition.





MUFG Bank, Ltd. Houston Agency

Japanese HQ	MUFG Bank, Ltd.	Industry Classification	Finance and Insurance
Website	https://www.mufgamericas.com/	Corporate Form in Texas	Agency
Texas Address	1100 Louisiana Street, Suite 4850, Houston, TX 77002	Email in Texas	-
Number of Employees	<Texas> 42 (The total number of employees at the Dallas and Houston Agency) <Global> 170,000 (Mitsubishi Financial Group)	Corporate Function in Texas	The U.S. headquarters is located outside of Texas
Year of Establishment	<Texas> 1961 <Japan> 1919	Contact Person in Texas	Buhei Yoshida, Managing Director
Annual Sales	<Texas> - <Global> -	Main Number	713-658-1160

Company and Product/Service Overview, Activities in Texas


MUFG (Mitsubishi UFJ Financial Group) is one of the world’s leading financial groups. Headquartered in Tokyo and with over 360 years of history, MUFG is a global network with 1,800 offices in over 40 countries, offering services including commercial banking, trust banking, securities, credit cards, consumer finance, asset management, and leasing.

The Group’s operating companies include MUFG Bank, Mitsubishi UFJ Trust and Banking Corporation (Japan’s leading trust bank), and Mitsubishi UFJ Securities Holdings Co., Ltd., one of Japan’s largest securities firms.

Through close partnerships among our operating companies, the Group is "committed to empowering a brighter future," as our purpose, flexibly responding to all the financial needs of our customers, serving society, and fostering shared and sustainable growth for a better world.

MUFG’s shares trade on the Tokyo, Nagoya, and New York (NYSE: MTU) stock exchanges.



Committed to empowering a brighter future. 



Nikkei America, Inc.

Japanese HQ	Nikkei Inc.	Industry Classification	Other (Media)
Website	https://www.nikkei.co.jp/nikkeiinfo/en/	Corporate Form in Texas	Subsidiary
Texas Address	11200 Westheimer Road, Suite 606, Houston, TX 77042	Email in Texas	nikkeihou@nex.nikkei.co.jp
Number of Employees	<Texas> 3 <Global> 3,042	Corporate Function in Texas	The U.S. headquarters is located outside of Texas
Year of Establishment	<Texas> 2021 <Japan> 1876	Contact Person in Texas	-
Annual Sales	<Texas> - <Global> 1.1billion USD	Texas TEL	-

Company and Product/Service Overview, Activities in Texas

Reporting for the Japanese business newspaper Nikkei. Covered the latest trends in the energy industry, energy policy, and the U.S. economy.



NIPPON CARBON OF AMERICA, LLC

Japanese HQ	NIPPON CARBON CO., LTD.	Industry Classification	Carbon products manufacturing and sale
Website	http://www.carbon.co.jp	Corporate Form in Texas	Subsidiary
Texas Address	17706 Rough River Court, Humble TX 77346	Email in Texas	m-alford@carbon.co.jp
Number of Employees	<Texas> 2 <Global> 648	Corporate Function in Texas	U.S. headquarters
Year of Establishment	<Texas> 2018 <Japan> 1915	Contact Person in Texas	Mihoko Alford
Annual Sales	<Texas> - <Global>31,578 million JPY	Texas TEL	832-799-2006

Company and Product/Service Overview, Activities in Texas

Nippon Carbon, since its establishment in 1915, has developed a variety of products featuring carbon's prominent attributes.

Our main manufacturing and sales domains are carbon fiber products used for aerospace technology and general industry, High Purity Treatment Graphite used when producing crystalline silicon, Anode Materials for Lithium Ion Battery, Silicon Carbide Continuous Fibers mainly provided for the aerospace industry, impervious graphite and chemicals used for chemical industrial devices and equipment such as heat exchangers, flexible graphite for the automobile industry, and other carbon products.

We are promoting an international market vision by exporting our products overseas and proceeding with application development in partnership with foreign companies.



Nippon Express U.S.A., Inc.

Japanese HQ	NIPPON EXPRESS HOLDINGS, INC.	Industry Classification	Transportation and Warehousing
Website	https://www.nipponexpress-holdings.com/en/	Corporate Form in Texas	Branch Office
Texas Address	17510 E Hardy Rd Suite 300 Houston, TX 77073	Email in Texas	takashi.omori@nipponexpress.com
Number of Employees	<Texas> 30 <Global> 73,482	Corporate Function in Texas	The U.S. headquarters is located outside of Texas
Year of Establishment	<Texas> 1975 <Japan> 2022	Contact Person in Texas	Takashi Omori / Deputy General Manager
Annual Sales	<Texas> - <Global> USD 17,777 million (as of Decembe 2024)	Texas TEL	281-987-2300

Company and Product/Service Overview, Activities in Texas

NIPPON EXPRESS USA was established in 1962 as the first overseas subsidiary of Nippon Express. For nearly 60 years, we have provided comprehensive transportation services including Air and Ocean Import/Export, Warehousing, Trucking, and Moving services. Since 1975, we have locations in Laredo, McAllen, and El Paso along the Mexican border, in addition to Dallas, Houston, and San Antonio. We are expanding our business through a network of six locations, the largest number of locations among Japanese logistics companies. Each location has its own warehouse, a total of 683,000 SQF, and provides high-quality logistics services through in-house systems and extensive training.

We operate shuttle trucks that connect two major international hubs, DFW and IAH Airports, to various cities in Texas, providing a speedy Air cargo transportation network. In ocean freight forwarding, we provide our own transportation services which cover Port of Houston, West Coast, and East Coast in all directions.

Utilizing our network of strengths, we operate daily milk-run trucking services between San Antonio, the center of the Texas automotive industry, and automotive suppliers in various Midwest cities, as well as cross-border trucking services to Mexico.

Nippon Express has logistics capabilities to support your business in Texas, the U.S., and globally.



NIPPON KAIJI KYOKAI(ClassNK)

Japanese HQ	NIPPON KAIJI KYOKAI(ClassNK)	Industry Classification	Other Services
Website	https://www.classnk.or.jp/	Corporate Form in Texas	Branch Office
Texas Address	909 Fannin Street, Suite 3010, Houston, Texas, 77010	Email in Texas	uh@classnk.or.jp
Number of Employees	<Texas> 7 <Global> 1,900	Corporate Function in Texas	The U.S. headquarters is located outside of Texas
Year of Establishment	<Texas> 1982 <Japan> 1899	Contact Person in Texas	Hideyuki Mukai, General Manager
Annual Sales	<Texas> - <Global> -	Texas TEL	713-655-8086

Company and Product/Service Overview, Activities in Texas

Since its inception in 1899, ClassNK has been engaged in a range of activities dedicated to ensuring the safety of life and property at sea and protecting the marine environment over its over 120 years of history as a leading classification society.

ClassNK conducts surveys from its worldwide service network of around 130 offices to ensure that all new and existing ships and offshore structures fully comply with the classification rules developed by the Society. The rules cover not only hull structures but also propulsion systems, electrics, electronic systems, safety equipment, cargo handling gear, various materials, and navigational equipment, among other systems and components.

ClassNK has authorization from over 100 flag administrations around the world to conduct statutory surveys and issue certifications by international conventions and national rules and regulations. Houston Office provides all ships and offshore structures being registered to our society with the above services in Texas and a part of Louisiana.





NIPPON STEEL NORTH AMERICA, INC.

Japanese HQ	Nippon Steel Corporation	Industry Classification	Manufacturing
Website	https://www.nipponsteel.com/	Corporate Form in Texas	Subsidiary
Texas Address	920 Memorial City Way, Suite 700, Houston TX 77024	Email in Texas	info@us.nipponsteel.com
Number of Employees	<Texas> 12 <Global> 113,845	Corporate Function in Texas	The U.S. headquarters is located outside of Texas
Year of Establishment	<Texas> 1969 <Japan> 1970 (Establishment year of the continuing company, Shin Nippon Steel)	Contact Person in Texas	Masami Osborn, Office Manager
Annual Sales	<Texas> - <Global> Approximately JPY 8.7 trillion	Texas TEL	713-654-7111

Company and Product/Service Overview, Activities in Texas

Providing the technical services to the customers in oil, gas and energy industries regarding the steel pipes and heavy steel sheets.

Nippon Steel Trading Americas Inc. Houston Branch

Japanese HQ	NIPPON STEEL TRADING CORPORATION	Industry Classification	Wholesale Trade
Website	https://www.nst-us.com/	Corporate Form in Texas	Branch Office
Texas Address	820 Gessner Rd. Ste 1500, Houston, Texas, 77024	Email in Texas	everyonehouston@nst-us.com
Number of Employees	<Texas> 6 <Global> 6,406	Corporate Function in Texas	The U.S. headquarters is located outside of Texas
Year of Establishment	<Texas> 1996 <Japan> 1977	Contact Person in Texas	Hanmin Lee, General Manager
Annual Sales	<Texas> FY2024 / 41,600,000 USD <Global> FY2024 / 9,602,600,000 USD	Texas TEL	713-266-7910

Company and Product/Service Overview, Activities in Texas

Headquartered in Schaumburg, IL, our company operates as a steel and infrastructure trading firm within the Nippon Steel Group.

We have 6 sales offices and 9 production and processing facilities including Mexico. Our focus is on meeting the high-quality steel needs of our customers in the region, primarily by handling products from the Nippon Steel Group.



NYK Group Americas Inc.

Japanese HQ	NYK Line	Industry Classification	Shipping & logistics
Website	https://www.nyk.com/english/	Corporate Form in Texas	Subsidiary
Texas Address	3009 Post Oak Blvd. Suite 1320, Houston Texas	Email in Texas	yuhei.sasahara@nykgroup.com
Number of Employees	<Texas> 7 <Global> 35,230	Corporate Function in Texas	The U.S. HQ is located outside of Texas
Year of Establishment	<Texas> 2016 <Japan> 1885	Contact Person in Texas	Yuhei Sasahara / Managing Director
Annual Sales	<Texas> - <Global> USD 17,258 Million	Texas TEL	713-380-8372

Company and Product/Service Overview, Activities in Texas

- (1) Investment planning for Energy
- (2) Designing and recommending NYK Line's Energy strategies in North & South America
- (3) Actual investments to Energy project companies in North & South America
- (4) Directing research and analysis of Energy industries
- (5) Coordinating and controlling NYK Line's Energy subsidiaries and/or affiliates in North & South America

OKAYA(U.S.A.)INC.



OKAYA USA, INC.

岡谷鋼機株式会社

Japanese HQ	OKAYA CO., LTD	Industry Classification	Wholesale Trade
Website	https://www.okaya-usa.com/	Corporate Form in Texas	Branch Office
Texas Address	820 Gessner Road, Suite 1358, Houston, TX 77024	Email in Texas	tinnami@okaya-usa.com
Number of Employees	<Texas> 6 <Global> 6,477	Corporate Function in Texas	The U.S. headquarters is located outside of Texas
Year of Establishment	<Texas> 1974 <Japan> 1669	Contact Person in Texas	Takaaki Innami (Mr) / Vice President & General Manager of Houston Branch
Annual Sales	<Texas> 2024 / USD 60M <Global> 2024 / USD 7,500M	Texas TEL	832-358-5000

Company and Product/Service Overview, Activities in Texas

OKAYA & CO., LTD. engages in the Japan-based sale, exporting, and importing (including three-country transactions) of products in a multifaceted manner via the global network of the Okaya Group. These products include iron and steel, special steel, non-ferrous metals, electrical and electronic parts, chemical products, machinery and tools, piping and housing equipment, construction-related items, and food products.

Osaka Gas USA Corporation

Japanese HQ	Osaka Gas Co., Ltd.	Industry Classification	Mining, Quarrying, and Oil and Gas Extraction
Website	https://www.osakagasusa.com/	Corporate Form in Texas	Subsidiary
Texas Address	1330 Post Oak Blvd, Suite 1900, Houston, TX 77056	Email in Texas	-
Number of Employees	<Texas> 63 (March, 2025) <Global> 21,404 (March, 2025)	Corporate Function in Texas	U.S. headquarters
Year of Establishment	<Texas> 2007 <Japan> 1897	Contact Person in Texas	-
Annual Sales	<Texas> - <Global> JPY 2,069,019 (March, 2025)	Texas TEL	713-354-9100

Company and Product/Service Overview, Activities in Texas

Osaka Gas USA Corporation (“OGUSA”), a wholly owned subsidiary of Osaka Gas Co., Ltd. (“Osaka Gas”), was established to expand Osaka Gas’s presence in the United States and beyond.

Since our first investment in the U.S. market in 2004, we have successfully developed, owned, and operated energy businesses such as gas-fired IPPs, renewable energy projects, the Freeport LNG project (liquefaction and tolling), and shale gas development. We remain committed to contributing to a stable and sustainable energy supply, while working toward the realization of a low-carbon society. We will accelerate the carbon neutralization of our existing businesses and promote innovation in renewable and future energy development—including synthetic methane (“e-methane”), green ammonia, and hydrogen.

With extensive experience in the energy sector, we aim to grow into a leading energy company in North America.



Provided by Freeport LNG Development, L.P.





Pasona N A, Inc.

Japanese HQ	Pasona Group Inc.	Industry Classification	Information
Website	https://www.pasona.com/	Corporate Form in Texas	Branch Office
Texas Address	5718 Westheimer Rd Suite 940 Houston, TX 77057	Email in Texas	saitani@pasona.com
Number of Employees	<Texas> 8 <Global> 19,588	Corporate Function in Texas	The U.S. HQ is located outside of Texas
Year of Establishment	<Texas> 2011 <Japan> 1976	Contact Person in Texas	Sanae Aitani Head of Business Development, Central-Region
Annual Sales	<Texas> - <Global> 3,250million (2020)	Texas TEL	713-730-3277

Company and Product/Service Overview, Activities in Texas

Company and Product/Service Overview, Activities in Texas since its establishment in 1985, Pasona N A, Inc. has supported Japanese-owned companies in the U.S. by providing solutions that go beyond staffing. Our services are built on Three business domains: Talent Acquisition, Business Process Outsourcing, Consulting. Through these, we work alongside our clients, job seekers, and our own staff to drive organizational growth and business success.

Our mission is to help Japanese-owned businesses in the U.S. strengthen their competitiveness and achieve sustainable growth. We provide end-to-end support ranging from recruitment strategies, permanent and temporary staffing, and RPO services, to outsourcing of non-core functions such as accounting, HR, and resident employee management. In addition, our consulting team offers total support from strategy to execution in areas such as management, HR development, operations optimization, and organizational transformation. Leveraging technology, we also deliver digital tools and AI-driven solutions that empower businesses to overcome human resource constraints and maximize efficiency.

By combining Pasona’s global network with localized expertise in the U.S., we contribute to our clients’ success through strategic talent acquisition, organizational optimization, and digital innovation—enabling them to focus on their core business and secure long-term growth.



Sanyo Chemical Texas Industries, LLC

Japanese HQ	Sanyo Chemical Industries, Ltd.	Industry Classification	Manufacturing
Website	www.sanyo-chemical.co.jp/eng/	Corporate Form in Texas	Subsidiary
Texas Address	10536 Bay Area Blvd, Pasadena, TX 77507	Email in Texas	eberg@sanyotexas.com
Number of Employees	<Texas> 13 <Global> 2,096	Corporate Function in Texas	The U.S. headquarters is located outside of Texas
Year of Establishment	<Texas> 2005 <Japan> 1949	Contact Person in Texas	Edward Berg
Annual Sales	<Texas> - <Global> JPY145 Billion	Texas TEL	281-474-2617

Company and Product/Service Overview, Activities in Texas

Sanyo Chemical Industries is a chemical manufacturer founded in 1949 and headquartered in Kyoto, Japan. Under the corporate motto "Let us contribute to building a better society through our corporate activities", we manufacture and sell approx. 3,000 performance chemicals, which provide the "Solutions" through our specialized surface control, polymer design, and synthetic technology.

Sanyo Chemical Texas Industries(SCTI) is a subsidiary of Sanyo Chemical America (Pittsburgh, PA), which controls Sanyo Chemical's North American operations, and is our sole manufacturing site in North America. SCTI has been manufacturing thermoplastic polyurethane beads for automotive interior materials since its operation in 2006. It is used on the surface of automobile instrument panels, mainly for high-end vehicles, and is highly regarded for its luxurious feel and stability of quality.





New way, New value

Sojitz Corporation of America

Japanese HQ	Sojitz Corporation	Industry Classification	General Trading
Website	https://sojitzamericas.com	Corporate Form in Texas	Branch Office
Texas Address	842 West Sam Houston Parkway, N., Suite 500, Houston, TX 77024	Email in Texas	suita.shiro@sojitz.com
Number of Employees	<Texas> 14 <Global> 26,206	Corporate Function in Texas	The U.S. headquarters is located outside of Texas
Year of Establishment	<Texas> 2003 <Japan> 1862	Contact Person in Texas	Shiro Suita/Branch Manager
Annual Sales	<Texas> - <Global> JPY 2,510 Billion (2024)	Texas TEL	713-961-5435

Company and Product/Service Overview, Activities in Texas

Sojitz Corporation of America(SCA) is the 100% owned U.S. subsidiary of Sojitz Corporation, an integrated global trading company with \$16 billion in revenue. Headquartered in Tokyo, Sojitz has 88 offices, 519 group companies, and over 26,000 employees around the world.

Sojitz has 9 business divisions through which SCA operates across an enormous scope of industries and works with thousands of companies in the Americas and around the world. The Houston Branch is currently most active in the Chemical, Energy & Infrastructure sectors.

(1) As a Distributor, we trade a wide variety of chemicals. We also are 100% shareholders of METTON America, Inc. and Cymetech Corporation, managing and operating these two U.S.-based chemical manufacturers.

(2) AS for renewable energy business, SCA develops, invests, operates & maintains various projects throughout the Americas region. We view every disruption and change in our modern economy as an opportunity and will continue using innovative ideas to take on new challenges as we work to achieve sustainable growth for our community and Sojitz.

Staffmark Group (Recruit HD)



Japanese HQ	Recruit Holdings	Industry Classification	Professional, Scientific, and Technical Services
Website	www.smgrouna.com	Corporate Form in Texas	Subsidiary
Texas Address	2656 West Loop South, Suite 105, Houston, TX 77084	Email in Texas	Risa.Mitsubishi@staffmarkgroup.com
Number of Employees	<Texas> 79 <Global> 1600	Corporate Function in Texas	The U.S. headquarters is located outside of Texas
Year of Establishment	<Texas> 1970 <Japan> 1963	Contact Person in Texas	Risa Mitsubishi, Strategic Accounts
Annual Sales	<Texas> - <Global> \$23.1 billion	Texas TEL	866-248-8827

Company and Product/Service Overview, Activities in Texas

Staffmark Group offer tailored HR Services through the nationwide network and expert recruiters from 17 branches in Texas. Services include Direct Hire, Temporary Staffing, MSP/VMS, RPO, and PEO.



Sumitomo Corporation of Americas

Japanese HQ	Sumitomo Corporation	Industry Classification	Wholesale Trade
Website	https://www.sumitomocorpofamericas.com/	Corporate Form in Texas	Subsidiary
Texas Address	1500 Post Oak Blvd. Suite 1500 Houston, TX 77056	Email in Texas	-
Number of Employees	<Texas> - <Global> 75,383	Corporate Function in Texas	The U.S. headquarters is located outside of Texas
Year of Establishment	<Texas> 1965 <Japan> 1919	Contact Person in Texas	-
Annual Sales	<Texas> - <Global> JPY 463.7 Billion (2021)	Texas TEL	-

Company and Product/Service Overview, Activities in Texas

Established in 1952 and headquartered in New York City, Sumitomo Corporation of Americas (SCOA) is the largest subsidiary of Sumitomo Corporation, one of the world’s leading traders of goods and services. As an integrated business enterprise, the company is a major organizer of multinational projects, an important international investor and financier, and a powerful force for the distribution of products and services through a network of offices worldwide.

In Texas, SCOA engages in a wide variety of businesses and industries, including but not limited to energy, chemical, infrastructure, real estate, tubular products, and climate change-related. From renewable energy infrastructure projects like the Mesquite Creek Wind Farm to master-planned communities such as Town Lake to our many subsidiaries and portfolio companies supporting all areas of the oil and gas value chain, SCOA has and continues to invest in industries that are important to the Texas economy. In the past two years alone, SCOA has broken ground on three different sites in Texas: Summit Industrial Park, a logistics hub for tubular transport in the Midland area; and two industrial land sites in the Dallas Fort Worth area that are being developed into logistics supply facilities or warehouses to help support the booming e-commerce market.





Sundai USA, Inc.

Japanese HQ	Sundai Center of International Education	Industry Classification	Educational Services
Website	-	Corporate Form in Texas	Subsidiary
Texas Address	1710 S. Dairy Ashford Rd. #107, Houston, TX 77077	Email in Texas	houston@sundai-kaigai.jp
Number of Employees	<Texas> - <Global> -	Corporate Function in Texas	The U.S. headquarters is located outside of Texas
Year of Establishment	<Texas> 2019 <Japan> 2000	Contact Person in Texas	YASUO HIRANO / Director
Annual Sales	<Texas> - <Global> -	Texas TEL	346-342-1173

Company and Product/Service Overview, Activities in Texas

We provide instruction based on the Japanese national curriculum for students from elementary through high school. Our lessons cover all major subjects—Japanese, Math, and English—helping students build a strong academic foundation that aligns with Japanese educational standards.

For students planning to return to Japan, we also offer specialized preparation for returnee entrance examinations, including past exam analysis, interview practice, and essay writing guidance.





TADANO AMERICA CORPORATION

Japanese HQ	TADANO LTD.	Industry Classification	423810—Construction and Mining (except Oil Well) Machinery and Equipment Merchant Wholesalers
Website	https://tadanoamericas.com/uscan/en/	Corporate Form in Texas	Subsidiary
Texas Address	4242 West Greens Road, Houston TX, 77066	Email in Texas	tomonori.akahori@tadano.com
Number of Employees	<Texas> 127 (2024YE) <Global> 4,916 (2024YE)	Corporate Function in Texas	U.S. headquarters
Year of Establishment	<Texas> 1993 <Japan> 1948	Contact Person in Texas	Tomonori Akahori/Corporate Secretary
Annual Sales	<Texas> 686,764,640(2024) << Global> 1,922,823,219(2024, YEN291,500M/FX151.6)	Texas TEL	281-869-0030

Company and Product/Service Overview, Activities in Texas

TADANO AMERICA CORPORATION (TAC) is a wholly owned subsidiary of TADANO Limited in Japan, and in charge of sales and services provided for Rough Terrain Cranes, All Terrain Cranes, Crawler Cranes, Truck Cranes and AWP as the base of the business in the Americas.

In 2023, TAC marked its 30th anniversary. In 2019, TADANO Limited acquired Demag business between Terex Corp, which has enabled us to strengthen the All Terrain cranes line-up and add Lattice Crawler cranes to our product line to meet more customer’s demands. TADANO Limited made a series of acquisitions to add more lines of equipment. Nagano Industry/Japan(2024), Manitex International/TX (2025), and the transportation system business of IHI Transport Machinery Co., Ltd./Japan(2025).

We define our business domain as "Lifting Equipment (LE)= anti-gravity and aerial working products", and aims as "LE No. 1", "Overseas (outside of Japan) Sales Ratio 80%" and "Stable and Profitable Company". As one of the major subsidiaries in TADANO group, TAC promises to continue providing reliable products and services to the market from Houston under our core value of “Sozo(Creation)”, “Hoshi(Contribution)” and “Kyoryoku(Cooperation).”



Tokio Marine America Houston Branch

Japanese HQ	Tokio Marine & Nichido Fire Insurance Co., Ltd.	Industry Classification	Finance and Insurance
Website	https://www.tmamerica.com	Corporate Form in Texas	Branch Office
Texas Address	13403 Northwest Freeway, Houston TX 77040	Email in Texas	Koichi.Tsubota@tmamerica.com
Number of Employees	<Texas> 37 <Global> 51,436	Corporate Function in Texas	The U.S. headquarters is located outside of Texas
Year of Establishment	<Texas> 1978 <Japan> 1879	Contact Person in Texas	Koichi Tsubota, Senior Vice President and Branch Manager
Annual Sales	<Texas> - <Global> JPY 5,305.1 Billion	Texas TEL	713-300-9250

Company and Product/Service Overview, Activities in Texas

With over a 100-year history in the U.S., Tokio Marine America (TMA) offers tailored products to a diverse range of customers - from small to large-sized global businesses seeking traditional multi-line coverage, to larger private and public companies requiring full risk management solutions.

Our commitment to providing the highest level of service is paramount. More than 93% of our customers recommend TMA based on our superior claims service. TMA enjoys an A++ (Superior) rating from A.M. Best. With a solid foundation of financial stability, our strength lies in understanding your business and working in partnership to exceed your expectations



Tokyo Gas America Ltd.

Japanese HQ	Tokyo Gas Co., Ltd.	Industry Classification	Electricity, Gas
Website	https://www.tgamerica.com	Corporate Form in Texas	Subsidiary
Texas Address	5051 Westheimer Road Suite 1900, Houston Texas 77056	Email in Texas	info@tgamerica.com
Number of Employees	<Texas> 327 <Global> 15,572	Corporate Function in Texas	U.S. headquarters
Year of Establishment	<Texas> 2013 <Japan> 1885	Contact Person in Texas	Tomoka Ikuji, General affairs, Office Manager
Annual Sales	<Texas> 1.135 billion <Global> 17.58 Billion	Texas TEL	713-465-1811

Company and Product/Service Overview, Activities in Texas

Tokyo Gas America Ltd. (TGA), a wholly owned subsidiary of Tokyo Gas Co., Ltd., leads the Group’s energy investments and business development across North America. Headquartered in Houston, Texas, TGA actively invests in upstream, midstream, and renewable energy assets to support a sustainable and reliable energy supply.

TGA holds a majority interest in TG Natural Resources, one of the leading natural gas producers in East Texas, and continues to expand its footprint in the Haynesville Basin. In the power sector, TGA owns the 631 MW Aktina solar project, one of the largest in Texas, and the 174 MW Longbow battery energy storage project, both contributing to grid stability in ERCOT. TGA also owns a 33% interest in the 488 MW Birdsboro natural gas-fired power plant in Pennsylvania and participates in Mexico’s Bajío gas-fired power generation project. In 2024, TGA acquired a minority interest in ARM Energy Trading, a well-established North American natural gas marketer, enhancing its trading capabilities.





Tomoe Engineering USA, Inc.

Japanese HQ	TOMOE Engineering Co., Ltd.	Industry Classification	Mining, Quarrying, and Oil and Gas Extraction
Website	https://www.tomo-e.co.jp/english/	Corporate Form in Texas	Subsidiary
Texas Address	2401 Highway 90 Liberty, TX USA 77575	Email in Texas	info@tomo-engineeringusa.com
Number of Employees	<Texas> 17 <Global> 786	Corporate Function in Texas	U.S. headquarters
Year of Establishment	<Texas> 2013 <Japan> 1941	Contact Person in Texas	Kazuya Ichinose
Annual Sales	<Texas> - <Global> JPY 45,132 Million	Texas TEL	936-641-9065

Company and Product/Service Overview, Activities in Texas

Tomoe Engineering USA was founded in 2013 in Liberty, Texas. About 45 miles from Downton Houston. It is 35 miles from George Bush Intercontinental Airport. Tomoe USA has a service shop and inventory storage on site. The main business is Decanter Centrifuge machine sales, parts supply, repair, and field services. Tomoe USA covers entire North America: oil and gas, chemicals, wastewater, ethanol, human food, and animal proteins.

In the 80-years history of Tomoe Engineering Japan, Tomoe commit passion to the customer-first principle. Teams such as sales, service, and customer support enhance the relationship with customers. We also pay maximum attention to corporate social responsibility, environmental awareness, risk management, and legal compliance of trade. Tomoe USA is a professional team that is a proactive entity to increase the profitability and satisfaction of customers.



Toray International America Inc. (Houston Office)

Japanese HQ	Toray Industries, Inc.	Industry Classification	HQ: Manufacturing and Sales Houston: Wholesale Trade and Marketing
Website	https://www.toray.us/	Corporate Form in Texas	Branch Office
Texas Address	140 Cypress Station Dr., Suite 210, Houston, TX 77090	Email in Texas	masato.ishizuka.t7@mail.toray
Number of Employees	<Texas> 7 <Global> 47,194	Corporate Function in Texas	The U.S. headquarters is located outside of Texas
Year of Establishment	<Texas> 2007 <Japan> 1926	Contact Person in Texas	Masato Ishizuka, General Manager
Annual Sales	<Texas> - <Global> 16.8 billion USD (2025 March)	Texas TEL	281-587-2299

Company and Product/Service Overview, Activities in Texas

Toray is a global leader in technology and advanced materials innovation. Since its founding in 1926, Toray has consistently contributed to societal advancement by creating new value across diverse industries. Our expertise spans fibers and textiles, performance chemicals, carbon fiber composites, environmental solutions, engineering, and life sciences —helping address the world’s evolving challenges. Corporate Link: <https://www.toray.com/>

Toray International, Inc., the trading arm of the Toray Group, leverages decades of global experience and a robust network of domestic and international offices to deliver a wide range of products and services—from raw materials to finished consumer goods. Corporate Link: <https://www.toray-intl.com/>

Toray International America Inc. The Houston office is responsible for nationwide sales of various medical devices, primarily the Inoue-Balloon catheter for cardiac procedures, which is manufactured by Toray in Japan. Additionally, the Houston office plays a key role in marketing plastic film products used in next-generation batteries and various industrial applications.



Medical Products



Film Products





Toshiba International Corporation

Japanese HQ	Toshiba Corporation	Industry Classification	Manufacturing
Website	https://www.toshiba.com/tic/	Corporate Form in Texas	Subsidiary
Texas Address	13131 West Little York Rd, Houston, TX 77041	Email in Texas	tic-voc@toshiba.com
Number of Employees	<Texas> 900 <Global> 95,000	Corporate Function in Texas	U.S. headquarters
Year of Establishment	<Texas> 1973 <Japan> 1875	Contact Person in Texas	Yohei Ebana, VP of Strategic Planning
Annual Sales	<Texas> USD850M (FY2024) <Global> USD24B (FY2024)	Texas TEL	713-466-0277

Company and Product/Service Overview, Activities in Texas

In 1977, Toshiba International Corporation established its corporate office and main campus on the corner of Eldridge and West Little York in Houston, Texas. A prime location within 10 miles of the Energy Corridor, TIC covers over one million square feet of manufacturing with auxiliary facilities around North America.

Four main divisions - Motors & Drives, Power Electronics, Automotive and Solution Products – research and develop industrial products covering industries such as oil and gas, utilities, datacenters, renewables, HVAC, water/wastewater, food, mining and railway to name a few. TIC has a proven history of putting the customer first and understands that quality of service is as important as the product. Teams from sales, field service, and customer service strive to ensure ease of business is top-of-mind when engaging with customers. The national sales force logs thousands of miles each year making in-person visits to even the most remote industries to build relationships. Customer service reps are standing by, even in the immediate aftermath of historic Hurricane Harvey, to lend a human voice to any questions customers may ask. And in the event service is required, TIC field service experts are dispersed across North America to be deployed at a moment’s notice.



Toshiba Logistics America, Inc.

Japanese HQ	SBS TOSHIBA LOGISTICS CORPORATION	Industry Classification	Logistics hub
Website	https://www.sbs-toshibalogistics.com/	Corporate Form in Texas	Subsidiary
Texas Address	2928 Greens Rd Bldg B Suite 100, Houston, TX 77032	Email in Texas	shota.goto@sbs-toshibalogistics.com
Number of Employees	<Texas> 4 <Global> 2,780	Corporate Function in Texas	The U.S. headquarters is located outside of Texas
Year of Establishment	<Texas> 2024 <Japan> 1974	Contact Person in Texas	Shota Goto, (Project Logistics Division), (Manager)
Annual Sales	<Texas> — <Global> JPY126Billion (FY2025)	Texas TEL	346-497-7997

Company and Product/Service Overview, Activities in Texas

Toshiba Logistics America, Inc. (TLGA) is the U.S. logistics subsidiary of SBS Toshiba Logistics, providing integrated supply chain and logistics services across North America. TLGA delivers end-to-end logistics solutions covering international freight forwarding, Foreign Trade Zone (FTZ) warehouse operations, 3PL warehouse management, domestic transportation, project logistics, and in-house customs brokerage & trade compliance services, supporting a wide range of industrial and commercial customers.

The company has extensive experience handling high-value, sensitive, and oversized cargo for industries such as electronic devices, semiconductors, medical equipment, energy, automotive, and social infrastructure projects—including large-scale power generation and transmission systems.

In Texas, TLGA operates a strategically located warehouse in Houston, supporting cargo flows through the Port of Houston, the Houston rail port, and George Bush Intercontinental Airport (IAH). This location enables efficient handling of international and domestic cargo, transloading, distribution, and multimodal transportation.

Through its U.S. locations and a global network of Toshiba Logistics overseas offices and partner companies, TLGA provides seamless logistics coordination from origin to destination, combining global planning with localized execution. By leveraging Toshiba Logistics’ standardized quality systems and trade compliance expertise, TLGA supports efficient, reliable, and compliant supply chain operations for customers operating in the United States and internationally.





TOYO U.S.A., INC.

Japanese HQ	Toyo Engineering Corporation	Industry Classification	Construction
Website	https://www.toyo-eng.com/jp/en/	Corporate Form in Texas	Subsidiary
Texas Address	15415 Katy Freeway, Suite 101 Houston, Texas 77094	Email in Texas	masaki.koide@toyo-eng.com
Number of Employees	<Texas> 10 <Global> 6,235	Corporate Function in Texas	U.S. headquarters
Year of Establishment	<Texas> 1984 <Japan> 1961	Contact Person in Texas	Masaki Koide - President and CEO of TOYO U.S.A.
Annual Sales	<Texas> - <Global> JPY 278,091 Million	Texas TEL	281-923-2214

Company and Product/Service Overview, Activities in Texas

Toyo Engineering Corporation (TOYO) is a global engineering company with a strong track record of plant construction in over 50 countries, primarily in the oil, petrochemical, chemical, and energy sectors. Its core business is EPC (Engineering, Procurement, and Construction), covering a wide range of process plants including fertilizers, basic chemicals, polymers, and specialty chemicals.

TOYO also focuses on decarbonization and energy-saving technologies. Its proprietary distillation technology, SUPERHIDIC™, and the plant-wide energy optimization system HERO (Hybrid Energy system Re-Optimization) enable up to 40% energy reduction. In Texas, TOYO operates an office in Houston, handling procurement from U.S. vendors and conducting business development across North, Central, and South America. With advanced technologies and proven reliability, TOYO contributes to building a more sustainable future.



Valqua NGC, Inc.

Japanese HQ	Valqua Limited	Industry Classification	Chemical
Website	http://www.valqua-ngc.com	Corporate Form in Texas	Subsidiary
Texas Address	1717 Tidwell Rd. Houston TX 77093	Email in Texas	ri-suzuki@valqua.com
Number of Employees	<Texas> 18 <Global> 1,800	Corporate Function in Texas	The U.S. headquarters is located outside of Texas
Year of Establishment	<Texas> 1981 <Japan> 1927	Contact Person in Texas	Risako Suzuki
Annual Sales	<Texas> - <Global> JPY 44,700 Million (FY2020)	Texas TEL	713-691-1193

Company and Product/Service Overview, Activities in Texas

VALQUA NGC, established in 1981, is the recognized leader in fluoropolymer-lined chemical storage and transportation vessels. Since that time, we have provided thousands of linings for chemical processing, transportation, and storage vessels worldwide.

<Mission Statement>

VALQUA NGC will provide the highest quality fluoropolymer linings and lined equipment, meet our customer's expectations, and earn their confidence in our products, services, and personnel.

<Lining Technology>

Our lining system combines the well-known qualities of fluoropolymer with a highly advanced application and welding process to provide contamination free storage, handling and transportation of high-purity material.

<Products>

In addition to lining containers, we also sell a wide variety of parts such as PFA lined valves, tubes, hoses, coupler and connectors, rupture discs and so on.

<Services>

With lining-related technology accumulated over many years, we can meet the diverse needs of our customers, such as legal inspections, various types of maintenance, voluntary inspections, and large-scale tank modifications.





Yamato Transport U.S.A. Inc.

Japanese HQ	Yamato Holdings, Co., Ltd.	Industry Classification	Freight Forwarding / International Moving
Website	https://www.yamatoamerica.com/	Corporate Form in Texas	Branch Office
Texas Address	4300 Campbell Rd. Ste. 100 Houston, TX 77041	Email in Texas	houoperat@yamatoamerica.com
Number of Employees	<Texas> 15 <Global> 200,000	Corporate Function in Texas	The U.S. headquarters is located outside of Texas
Year of Establishment	<Texas> 1982 <Japan> 1919	Contact Person in Texas	Mr. Cecilio De Leon
Annual Sales	<Texas> USD 10 Million <Global> USD 150 Million	Texas TEL	713-984-8930

Company and Product/Service Overview, Activities in Texas

Yamato Transport U.S.A., Inc. is a fully owned subsidiary of Yamato Holdings Co., Ltd., the #1 logistics service in Japan.

We support our customers' cross-border business with high-quality services in logistics, air freight, ocean freight, customs brokerage, international moving, and express parcel delivery. With our extensive YAMATO global network and almost 100 years of experience, we are ready to support our customers.





YOKOGAWA

Co-innovating tomorrow™

Yokogawa Corporation of America

Japanese HQ	Yokogawa Electric Corporation	Industry Classification	Professional, Scientific, and Technical Services
Website	https://www.yokogawa.com/us/	Corporate Form in Texas	Subsidiary
Texas Address	12530 West Airport Boulevard, Sugar Land, TX 77478	Email in Texas	Aya.Morokata@yokogawa.com
Number of Employees	<Texas> 693 <Global> 17,670	Corporate Function in Texas	U.S. headquarters
Year of Establishment	<Texas> 2007 <Japan> 1915	Contact Person in Texas	Aya Morokata /Director, Regional Corporate Head North America
Annual Sales	<Texas> 36 Billion JPY (FY2024) <Global> 562 Billion JPY (FY2024)	Texas TEL	281-340-3800

Company and Product/Service Overview, Activities in Texas

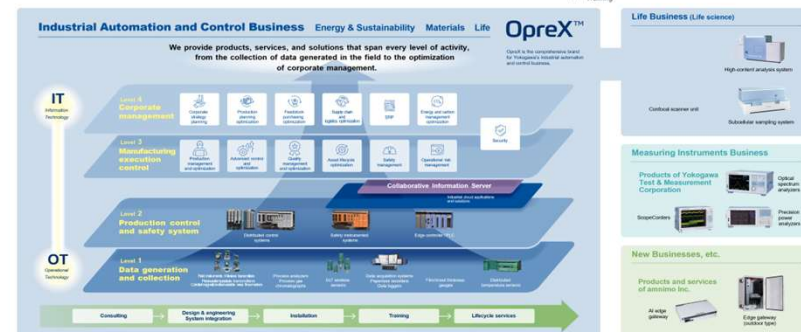
Since our inception in 1915, Yokogawa Electric Corporation has been providing expertise in measurement, control, and information technologies that contribute to the advancement of society.

In the Yokogawa's Purpose statement, we declare as follows: "Utilizing our ability to measure and connect, we fulfill our responsibilities for the future of our planet."

Yokogawa Corporation of America is a wholly owned subsidiary of Yokogawa Electric Corporation.

We partner and co innovate with the North American energy and chemical industries to achieve optimum operability and competitiveness.

Headquartered in Houston, Texas and supported by additional manufacturing and service locations across the U.S, Canada and Mexico , the business has a 64 year track record delivering leading edge measurement, control and information solutions.



Dallas and the Surrounding Area

Addison, Coppell, Dallas, Frisco, Grapevine, Irving, Lewisville, McKinney, Plano, Richardson, Southlake, The Colony



1Finity Americas, Inc. (Formerly: Fujitsu Network Communications, Inc.)

Japanese HQ	Fujitsu Ltd.	Industry Classification	Telecommunications
Website	https://1finity.com/	Corporate Form in Texas	-
Texas Address	17201 Waterview Parkway, Dallas, TX 75252	Email in Texas	-
Number of Employees	<Texas> - <Global> -	Corporate Function in Texas	U.S. headquarters
Year of Establishment	<Texas> 1991 <Global> 1935	Contact Person in Texas	-
Annual Sales	<Texas> - <Global> -	Texas TEL	800-777-3278

Company and Product/Service Overview, Activities in Texas

1Finity, a Fujitsu company, is a global provider of communications networks for our connected world. We uniquely combine technological leadership and expertise in open optical and wireless networking, network automation, and applied AI/ML to design, build, operate, and maintain critical digital communications network infrastructure.

Collaborating closely with ecosystem partners, we deliver transformative outcomes for service providers and network operators, and enable them to lower TCO, improve network performance, and increase energy efficiency.





7-Eleven, Inc.

Japanese HQ	SEVEN-ELEVEN JAPAN CO., LTD.	Industry Classification	Retail
Website	https://www.7-eleven.com/	Corporate Form in Texas	Subsidiary
Texas Address	3200 Hackberry Rd Irving TX 75063	Email in Texas	media@7-11.com
Number of Employees	<US> 72,000 <Global> -	Corporate Function in Texas	U.S. headquarters
Year of Establishment	<US> 1927 <Japan> 1973	Contact Person in Texas	-
Annual Sales	<US> - <Global> -	Texas TEL	800-255-0711

Company and Product/Service Overview, Activities in Texas

7-Eleven, Inc. is the premier name in the convenience-retailing industry. Based in Irving, Texas, 7-Eleven operations, franchise and / or licenses about 13,000 stores in the U.S. and Canada. Globally, the 7-Eleven trademark is represented in more than 84,000 stores in 19 countries and regions. In addition to 7-Eleven, stores, 7-Eleven, Inc. operates Speedway®, Stripes®, Laredo Taco Company® and Raise the Roost® Chicken and Biscuits locations. Known for its iconic brands such as Slurpee®, Big Bite® and Big Gulp®, 7-Eleven has expanded into high-quality sandwiches, salads, side dishes, cut fruit and protein boxes, as well as pizza and chicken wings.

7-Eleven offer customers industry-leading private brand products under the 7-Select™ brand including healthy options, decadent treats and everyday favorites at an outstanding value. Customers can earn and redeem points on various items in stores nationwide through its 7Rewards® loyalty program, place an order in the 7NOW® delivery app throughout the US, or rely on 7-Eleven for bill payment service and other convenient services. Find out more online at www.7-Eleven.com.





Accretech America Inc.

Japanese HQ	Tokyo Seimitsu Co., Ltd.	Industry Classification	Semiconductor Machinery Manufacturing
Website	https://www.accretech.jp/english/index.html	Corporate Form in Texas	Subsidiary
Texas Address	2280 Campbell Creek Blvd., Suite 300, Richardson TX 75082	Email in Texas	gotok@accretechamerica.com
Number of Employees	<Texas> 14 <Global> 2,767	Corporate Function in Texas	U.S. headquarters
Year of Establishment	<Texas> 1989 <Japan> 1949	Contact Person in Texas	Koji Goto
Annual Sales	<Texas> - <Global> JPY 150,534 Million	Texas TEL	214-459-1688

Company and Product/Service Overview, Activities in Texas

Accretech America Inc. was established in 1989 as a subsidiary of Tokyo Seimitsu Co., Ltd.

Since its establishment in 1949, Tokyo Seimitsu Co., Ltd. has continued to develop and supply highly efficient semiconductor production equipment by using our core technologies in precision positioning and measuring. In the USA, Accretech America has 3 offices including a head office in Richardson, Texas and additional offices in Fremont, CA and Boise, ID in order to sell and support semiconductor manufacturing equipment to the customers in the Americas. The primary products distributed by Accretech America are wafer probing machines, wafer dicing machines and polish grinders.

We will continue to provide products and services to exceed our customer expectations.



Agent America, Inc.

Japanese HQ	Agent Insurance Group, Inc.	Industry Classification	Finance and Insurance
Website	www.hoken-agentamerica.com/en	Corporate Form in Texas	Subsidiary
Texas Address	7460 Warren Parkway, Suite 101, Frisco, TX 75034	Email in Texas	tnakamura@nisv.net
Number of Employees	<Texas> 0 <Global> 461	Corporate Function in Texas	The U.S. headquarters is located outside of Texas
Year of Establishment	<Texas> 2020 <Japan> 2001	Contact Person in Texas	Tomoya Nakamura / Sales and Marketing
Annual Sales	<Texas> - <Global> -	Texas TEL	469-935-4536

Company and Product/Service Overview, Activities in Texas

We support risk management for Japanese companies looking to expand into the United States, from individual business owners to publicly traded companies. The risk environment our clients will face in the United States differs greatly from that of Japan.

In the business world of today, we must adapt to the specific risks, systems, and regulations in the United States. To meet these needs, our experienced staff provides these services in Japanese. Our ultimate goal is to provide services to help your company solve the business challenges it faces.

CMC Productions USA, Inc.

Japanese HQ	CMC Corporation	Industry Classification	Professional, Scientific, and Technical Services
Website	www.cmcprousa.com	Corporate Form in Texas	Subsidiary
Texas Address	3300 Dallas Parkway Suite 200 Plano, TX 75093	Email in Texas	info@cmcprousa.com
Number of Employees	<Texas> - <Global> 934	Corporate Function in Texas	U.S. headquarters
Year of Establishment	<Texas> 2017 <Japan> 1962	Contact Person in Texas	Tsuguru Mizumoto
Annual Sales	<Texas> - <Global> JPY 17,331,450,000 (September 2021)	Texas TEL	469-929-9388

Company and Product/Service Overview, Activities in Texas

We provide comprehensive digital solutions for communication and incorporate activities such as manual production, public relations, education activities, and post-sales support. The company's strengths are services focused on the automobile and manufacturing industries.





Denso International America, Inc./ Denso Products and Services Americas, Inc.

Japanese HQ	Denso Corporation	Industry Classification	Other Motor Vehicle Parts Manufacturing
Website	www.denso.com	Corporate Form in Texas	Branch Office
Texas Address	2701 W Plano Parkway, Suite 600, Plano, TX 75075	Email in Texas	na-diam-ticc-admin@na.denso.com
Number of Employees	<Texas> 38 <Global> 167,950	Corporate Function in Texas	The U.S. headquarters is located outside of Texas
Year of Establishment	<Texas> 2017 <Japan> 1949	Contact Person in Texas	Norihito Tanahashi
Annual Sales	<Texas> 9.5 Billion US\$ (NA Total) <Global> 45.1 Billion US\$	Texas TEL	972-212-9057

Company and Product/Service Overview, Activities in Texas

DENSO International America, Inc. (DIAM) was first established in Southfield, Michigan in 1985 as DENSO's North American regional headquarters and parent company for its North American operations, including design and production engineering, technical support, sales and finance. In 2019, company opened its branch office in Plano, Texas to meet industry's huge demands in central part of the United States.

DENSO Products and Services Americas, Inc. (DPAM) is a subsidiary of Denso International America, Inc. and an automotive components sales and distribution company supplying parts for original equipment service dealers and for the independent aftermarket service centers and retailers. Company's headquarters was established in Long Beach, California in 1971. In 2017, company opened its branch office in Plano, Texas to better serve clients' needs. It's been at current location since August 2019.



ena Dallas

Japanese HQ	GAKKYUSYA U.S.A. CO., LTD.	Industry Classification	Educational Services
Website	http://www.ena-kikoku.com	Corporate Form in Texas	Branch Office
Texas Address	4020 Hedgcoxe Rd #300, Plano, TX 75024	Email in Texas	dallas@ena-us.com
Number of Employees	<Texas> - <Global> -	Corporate Function in Texas	The U.S. headquarters is located outside of Texas
Year of Establishment	<Texas> 2017 <Japan> 1976	Contact Person in Texas	HIROSHI KATO
Annual Sales	<Texas> - <Global> -	Texas TEL	469-661-9201

Company and Product/Service Overview, Activities in Texas

Established in 1987, d/b/a “ ena Gakkyusha U.S.A. Co., Ltd. is a wholly owned subsidiary of Gakkyusha Co., Ltd. ,” that provides an educational program for Japanese pupils aged between 3 and 18 years. Gakkyusha U.S.A. opened its first school in the United States, ena New York, in April 1987. In 2019, we operate 12 schools in seven different states in the United States: New York, New Jersey, Illinois, California, Michigan, Maryland and Texas.

There are tens of thousands of Japanese families living in the U.S., particularly the East Coast, West Coast, and Mid West. Because of the major differences in the methods and goals between Japanese and American education systems, the children of these families are confronted with great difficulty upon returning to schools in Japan.

Although Japanese children generally adjust well to American schools when they move to the U.S., the opposite is not true upon return to Japan. Thus, especially given the differences in educational goals and methodology between the two education systems, the looming return to Japan has caused great concern to those Japanese parents whose children have been removed from mainstream Japanese education for some time. To fill this need for supplemental Japanese education, we have established preparatory schools that will provide a Japanese educational program for Japanese pupils temporarily living on the East Coast, West Coast, and Midwest.

Our program parallels the curriculum they would have received had they remained in Japan.



Fujitsu North America Inc.

Japanese HQ	Fujitsu Limited	Industry Classification	Information
Website	https://www.fujitsu.com/us	Corporate Form in Texas	Subsidiary
Texas Address	17201 Waterview Pkwy, Dallas, TX 75252	Email in Texas	-
Number of Employees	<Texas> - <Global> 113,000	Corporate Function in Texas	U.S. headquarters
Year of Establishment	<Texas> 1984 <Global> 1935	Contact Person in Texas	-
Annual Sales	<Texas> - <Global> 25.59 billion USD	Texas TEL	-

Company and Product/Service Overview, Activities in Texas

Fujitsu is a global ICT (Information and Communication Technology) company with technological innovation at its core. We offer a wide range of products, services, and solutions. Our goal is to build on our experience and ICT capabilities to co-create an abundant, hopeful future alongside our customers.

Furthermore, based on technologies such as computing, AI, 5G, cyber security, cloud, data management, and IoT, Fujitsu will transform customers' businesses in three steps: "become ready for digital," "transformation of existing business," and "evolution into an ecosystem business model." By leading the digital transformation (DX) of its customers, we are striving to transform ourselves into a DX Company that contributes to solving social issues.





Hayakawa Electronics America Inc.

Japanese HQ	Hayakawa Densen Kogyo Co., Ltd	Industry Classification	Wholesale Trade
Website	www.hayakawaus.com	Corporate Form in Texas	Subsidiary
Texas Address	1425 Greenway Drive #140 Irving TX 75038	Email in Texas	sales@hayakawaus.com
Number of Employees	<Texas> 7 <Global> 10,000	Corporate Function in Texas	U.S. headquarters
Year of Establishment	<Texas> 2019 <Japan> 1964	Contact Person in Texas	Jun Ogura
Annual Sales	<Texas> - <Global> -	Texas TEL	972-457-0064

Company and Product/Service Overview, Activities in Texas

Import, export and sales for wire harness and related electric/electronics parts.



Hitachi High-Tech America, Inc.

Japanese HQ	Hitachi High-Tech Corporation	Industry Classification	Semiconductor Manufacturing Equipment, Analytical & Scientific Instruments, Industrial Materials, IoT Solutions and more
Website	https://www.hitachi-hightech.com/us/		
Texas Address	P.O. Box 612208, 1375 North 28th Avenue, Dallas, Texas 75261-2208, U.S.A.	Corporate Form in Texas	Subsidiary
Number of Employees	<Texas> 102 (Dallas) <Global> 12,717 (2022.3)	Email in Texas	kazunori.nemoto.we@hitachi-hightech.com
Year of Establishment	<Texas> 2002 <Japan> 1947	Corporate Function in Texas	The U.S. headquarters is located outside of Texas
Annual Sales	<Texas> - <Global> 576,800 M yen (HHT consolidated)	Contact Person in Texas	Kazunori Nemoto
		Texas TEL	972-615-9067

Company and Product/Service Overview, Activities in Texas

Hitachi High-Tech America, Inc. ("HTA") is a privately-owned global affiliate company that operates within the Hitachi Group Companies. HTA sells and services semiconductor manufacturing equipment, analytical instrumentation, scientific instruments, and bio-related products as well as industrial equipment, electronic devices, and electronic and industrial materials.

HTA's professionals make contributions of lasting significance for customers through concentration on innovative design, utilization of the world's most advanced technologies, comprehensive marketing, and versatile sales and service experience. Employees work to deliver a brand of products and services that meet or exceed customer expectations in terms of value, reputation, and dependability.

Although deeply committed to business success, the Company's culture embraces and employs values of corporate social responsibility, environmental awareness, risk management, and import/export compliance.

Our teams are dedicated to successful and profitable partnerships with leading companies worldwide.





IACE TRAVEL

Japanese HQ	IACE TRAVEL	Industry Classification	Arts, Entertainment, and Recreation, Other Services
Website	https://www.iace-usa.com/	Corporate Form in Texas	Branch Office
Texas Address	4101 McEwen Rd Suite 518,Dallas TX 75244	Email in Texas	b2b@iace-usa.com
Number of Employees	<Texas> - <Global> -	Corporate Function in Texas	The U.S. HQ is located outside of Texas
Year of Establishment	<Texas> 1999 <Japan> 1970	Contact Person in Texas	Yu Danke
Annual Sales	<Texas> - <Global> -	Texas TEL	-

Company and Product/Service Overview, Activities in Texas

IACE TRAVEL was first established in 1970 to provide a tailored service for every customer. Our company motto is "Putting MAGOKORO" in every trip arrangement."MAGOKORO" means "from the heart" and represents our dedication to providing personalized service and care to every customer. Although the travel industry has become overwhelmingly automated, our customized one-on-one service will never change. An IACE representative will always be able to assist in any circumstance your travel requires.

IACE Network

1. Reliable support to all over the world
2. Specially contracted discount hotel rates
3. Specializing in business travel to/from Japan and Asia. With a vast worldwide network, we can give consultation anywhere you happen to be.

With just one phone call to our 24-hour Reservation Center, obtain all the information you need for your upcoming trips, even within Japan!



ITO EN(North America)INC.

Japanese HQ	ITO EN,LTD.	Industry Classification	Wholesale Trade, Beverage sales
Website	https://www.itoen-global.com/	Corporate Form in Texas	Subsidiary
Texas Address	1320 Greenway Drive, Suite 700, Irving, TX, 75039	Email in Texas	-
Number of Employees	<Texas> - <Global> -	Corporate Function in Texas	U.S. headquarters
Year of Establishment	<Texas> 2021 <Japan> 1969	Contact Person in Texas	Yumiko Hamada
Annual Sales	<Texas> - <Global> -	Texas TEL	718-250-4000

Company and Product/Service Overview, Activities in Texas

The popularity of matcha and other Japanese foods, as well as the growing interest in healthy lifestyles, is expected to continue to drive sales of green tea products around the world. In order to grow with this market, we need to promote the value of tea to consumers.

Our goal is to establish a reputation as a "Global Tea Company" that can contribute to the health of people around the world. We want everyone to know the many benefits of incorporating green tea into their daily lives. By positioning Ito En as a top Japanese tea brand, we hope to increase our market share overseas.





Japan Airlines Co., Ltd.

Japanese HQ	Japan Airlines Co., Ltd.	Industry Classification	Transportation and Warehousing
Website	https://www.jal.co.jp/ar/en/	Corporate Form in Texas	Branch Office
Texas Address	2450 West Airfield Dr., Suite 100, DFW Airport, TX 75261	Email in Texas	org.dfwskg.jali@jal.com
Number of Employees	<Texas> 29 <Global> 14,431	Corporate Function in Texas	The U.S. headquarters is located outside of Texas
Year of Establishment	<Texas> 2015 <Japan> 1951	Contact Person in Texas	Yasushi Kimura
Annual Sales	<Texas> - <Global> 1,844 billions of yen	Texas TEL	972-973-9524

Company and Product/Service Overview, Activities in Texas

Japan Airlines(JAL) route between DFW and Tokyo is celebrating its 10th anniversary this year since its launch in 2015, thanks to the support of our customers. Last year, we introduced our newest aircraft, the A350-1000, which operates one daily flight on this route. The new cabins bring an even higher standard to international travel. Customers can enjoy a completely new in-flight experience, including new seats in every class, personalized services, and a quieter ride. For more details about the A350-1000, please visit the following website: <https://www.jal.co.jp/ar/en/offers/A350-1000/>

DFW Airport is a hub airport where our Oneworld alliance partner, American Airlines (AA), operates over 900 flights daily. It offers convenient connections, providing customers with an extensive network connecting Japan and other parts of Asia. AA also operates two daily flights between DFW and Tokyo. Together, JAL and AA operate three daily flights on this route, contributing to the mutual exchange of people and culture between Texas and Japan. JAL’s network, together with its codeshare partners, extends to more than 400 cities in over 60 countries. We invite you to fly with JAL and experience a wonderful journey in the sky. For more information, please visit the JAL website: <https://www.jal.co.jp/ar/en/>



Kamei North America Texas Office

Japanese HQ	KAMEI CORPORATION	Industry Classification	Other Services (except Public Administration)
Website	https://www.kamei.co.jp/english/	Corporate Form in Texas	Branch Office
Texas Address	100 Legacy Drive Suite 110, Plano, TX 75023	Email in Texas	tpacct@mitsuwa.com
Number of Employees	<Texas> 100 <Global> 1,200	Corporate Function in Texas	The U.S. headquarters is located outside of Texas
Year of Establishment	<Texas> 2025 <Japan> 1903	Contact Person in Texas	Kazuki Yamamoto, Manager
Annual Sales	<Texas> - <Global> -	Texas TEL	972-517-1715

Company and Product/Service Overview, Activities in Texas

Management of group-affiliated companies operating in the United States, including Mitsuwa Marketplace.



Kamigumi USA Inc.

Japanese HQ	Kamigumi Co., Ltd.	Industry Classification	Other Services (except Public Administration)
Website	https://www.kamigumi.co.jp/english/	Corporate Form in Texas	Subsidiary
Texas Address	5550 Granite Parkway Suite140 Plano TX 75024	Email in Texas	sales@kamigumi-usa.com
Number of Employees	<Texas> 7 <Global> 4,100	Corporate Function in Texas	U.S. headquarters
Year of Establishment	<Texas> 2018 <Japan> 1867	Contact Person in Texas	Keisuke Arai, Sales and Marketing, VP / Dallas Branch Manager
Annual Sales	<Texas> - <Global> -	Texas TEL	972-987-5138

Company and Product/Service Overview, Activities in Texas

Since the founding of Kamigumi, we have been expanding our business starting from Kobe Port, Japan’s largest logistics hub. In Japan, Kamigumi operates container terminals in Kobe and Tokyo and provides comprehensive port logistics services.

In the United States, Kamigumi USA Inc. operates branches in Dallas (TX), Los Angeles (CA), and Savannah (GA), offering international sea & air freight forwarding, inland transportation, industrial installations and warehousing/logistics services nationwide.

The Dallas office serves as the U.S. headquarters and main operation center, coordinating logistics management and customer support across all regions.

The Los Angeles office, with its own-operated warehouse (LA Logistics Center) opened in August 2025 near the Ports of Los Angeles and Long Beach, functions as our West Coast logistics base, providing transloading, distribution processing, and storage services.

The Savannah office covers the East Coast region, offering not only warehouse and transloading services but also comprehensive forwarding, and customs-related solutions, enabling flexible responses to FTZ and bonded cargo operations.

Kamigumi Group provides tailor-made global logistics solutions based on more than 140 years of experience and a worldwide network spanning Asia, North America, and Europe.



KDDI America, Inc.

Japanese HQ	KDDI Corporation	Industry Classification	Information
Website	https://us.kddi.com/en/	Corporate Form in Texas	Branch Office
Texas Address	5700 Granite Pkwy, Suite 860, Plano, TX 75034	Email in Texas	y.ueno@kddia.com
Number of Employees	<Texas> 13 <Global> 64,636	Corporate Function in Texas	The U.S. headquarters is located outside of Texas
Year of Establishment	<Texas> 2017 <Global> 1953	Contact Person in Texas	Yuichiro Ueno, General Manager
Annual Sales	<Texas> - <Global> 39.6 Billion USD (Mar 2025)	Texas TEL	469-318-1547

Company and Product/Service Overview, Activities in Texas

KDDI America, Inc. is the U.S. subsidiary of KDDI Corporation, a Fortune Global 500 company with a global presence in over 100 locations worldwide. Established in 1989, KDDI America provides a wide range of ICT solutions and digital transformation (DX) services to corporate clients across the Americas.

Our core strengths include network and cloud infrastructure, managed IT services, and cybersecurity. We also provide end-to-end support for office and factory buildouts, including structured cabling, wireless LAN, security camera systems, conference room AV, and furniture coordination—from planning to on-site installation.

In addition to traditional ICT services, KDDI America supports customers with the integration of AI, IoT, and advanced analytics platforms, enabling smarter operations and data-driven business decisions. These offerings are tailored to meet the unique needs of each customer across a wide range of industries.

Headquartered in New York, KDDI America operates offices across the US, including Los Angeles, Chicago, Houston, and Plano—delivering local support backed by global expertise.

Office Location in the US



Business Portfolio





Kintetsu World Express (U.S.A.), Inc.

Japanese HQ	Kintetsu World Express, Inc.	Industry Classification	Other Services (except Public Administration)
Website	www.kwe.com	Corporate Form in Texas	Branch Office
Texas Address	921 W. Bethel Road, Building 100, Suite 100, Coppell, TX 75019	Email in Texas	dfwexport.gen@kwe.com
Number of Employees	<Texas> 40 <Global> 18,000	Corporate Function in Texas	The U.S. headquarters is located outside of Texas
Year of Establishment	<Texas> 1969 <Japan>1969	Contact Person in Texas	Hiroshi Aono
Annual Sales	<Texas> - <Global> -	Texas TEL	817-796-7890

Company and Product/Service Overview, Activities in Texas

Business to Business logistics including Air Freight, Sea Freight, Warehousing.

Marubeni Transport Service Corp. (MTS)

Japanese HQ	Marubeni Logistics Corporation	Industry Classification	Logistics Services
Website	https://www.marubeni-trans.com/	Corporate Form in Texas	Subsidiary
Texas Address	5340 Legacy Drive, Suite130, Plano, TX 75024	Email in Texas	info@marubeni-trans.com
Number of Employees	<Texas> 8 <Global> 1500	Corporate Function in Texas	U.S. headquarters
Year of Establishment	<Texas> 2016 <Japan> 1983	Contact Person in Texas	Keigo Kaneko, President
Annual Sales	<Texas> - <Global> -	Texas TEL	469-687-9240

Company and Product/Service Overview, Activities in Texas

Marubeni Transport Service Corp. (MTS) is a leading logistics provider that has been pioneering innovative solutions since 1986. Headquartered in Plano, TX, and with a strong presence across the United States, including offices in Dallas, Long Beach, Chicago, Atlanta, and New York.

MTS is strategically positioned to offer seamless domestic and international logistics services. Our expertise spans from 3PL and truck transportation, including both asset-based trucking and brokerage services, to freight forwarding and customs clearance, ensuring that your supply chain is efficient, reliable, and cost-effective. We take pride in our digital solutions, which enhance efficiency, visibility and planning, and our commitment to sustainability, reflected in our eco-friendly transportation options. As part of the Marubeni Group, and backed by our parent companies, Marubeni Logistics and Marubeni America Corporation, we leverage a vast network and resources to deliver unparalleled logistics solutions.

With a proven track record of handling diverse cargo types, such as machinery, steel product and food & beverage. MTS consistently exceeds expectations in delivering timely and secure shipments. Our extensive industry experience and innovative strategies make us the preferred choice for businesses seeking reliable and comprehensive logistics support.



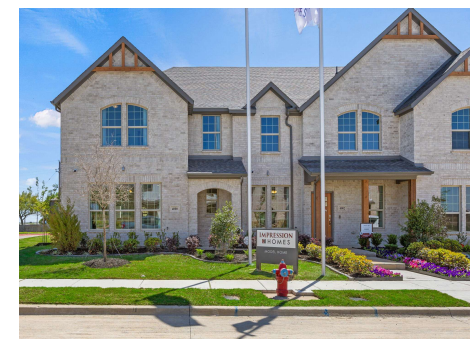
Misawa Homes America, Inc.

Japanese HQ	Misawa Homes Co., Ltd.	Industry Classification	Construction
Website	https://www.misawa.co.jp/en/corporate/	Corporate Form in Texas	Subsidiary
Texas Address	2325 Dean Way Suite 150, Southlake, TX 76092	Email in Texas	harima.n44@home.misawa.co.jp
Number of Employees	<Texas> 105 (2024/12) <Global> 7,962 (2025/3)	Corporate Function in Texas	U.S. headquarters
Year of Establishment	<Texas> 2018 <Japan> 1967	Contact Person in Texas	Nobuo Harima (Mr.)
Annual Sales	<Texas> USD 212 million (2024/12) <Global> USD 3,332 million (2025/3; JPY/USD 145)	Texas TEL	817-805-7721

Company and Product/Service Overview, Activities in Texas

Misawa Homes America, Inc. (“MA”), established in December 2018, is a wholly owned subsidiary of Misawa Homes Co., Ltd.(“MH”), a homebuilder to provide single-family houses etc. all over Japan. MH is a member of the group of Prime Life Technologies Corporation, which is jointly owned by Toyota Motor Corporation and Panasonic Holdings Corporation. MA’s primary business is to oversee and support the operations of its subsidiaries, Impression Homes (“IH”), and Visionary Homes (“VH”). IH is a homebuilder to construct and sell single family homes and townhomes (please see pictures as attached) in the DFW area and closed 601 units in 2024.

IH and MA are making daily efforts to provide affordable houses with quality for community satisfaction. MA opened a branch in Logan, Utah, in 2024, to start a partnership with VH, a Utah based homebuilder. MA and its subsidiaries will strive to contribute to the growth of society in Texas and Utah, with various business partners, including suppliers, financial institutions and investors etc.





Mitsui Bussan Logistics Inc.

Japanese HQ	Mitsui & Co. Ltd.	Industry Classification	Wholesale Trade
Website	https://www.bli.com	Corporate Form in Texas	Subsidiary
Texas Address	1707 Market Place Blvd., Suite 330, Irving, TX 75063	Email in Texas	ktoyoshima@bli.com
Number of Employees	<Texas> 58 <Global> 60	Corporate Function in Texas	U.S. headquarters
Year of Establishment	<Texas> 1992 <Global>1992	Contact Person in Texas	Kojiro Toyoshima
Annual Sales	<Texas> - <Global> -	Texas TEL	214-561-0405

Company and Product/Service Overview, Activities in Texas

Mitsui Bussan Logistics Inc. (“MBLI”), which was established in 1992, provides Demand Chain Management (DCM) services mainly to North American based convenience store operators and their upstream supplier and wholesale distribution partners. MBLI also provides fresh daily-to-store logistic services through its combined distribution center operations in Honolulu, Hawaii.

MBLI is a wholly owned subsidiary of MBK USA Holdings Inc., which itself is a wholly owned subsidiary of Mitsui & Co. Ltd., a diversified global trading, investment, and service enterprise headquartered in Tokyo, Japan, with more than 44,000 employees and annual revenue of \$97.7 billion. MBLI is committed to sustainable, long-term co-prosperity for itself and its customers while simultaneously demonstrating responsible corporate citizenship. Reflecting Mitsui & Co., Ltd.'s, core values, MBLI’s operations are guided by the Company’s CSR (Corporate Social Responsibility) policy, which emphasizes environmental and social accountability, and respect for stakeholders and the community.



Mizuho Bank, Ltd. , Dallas Representative Office

Japanese HQ	Mizuho Bank, Ltd.	Industry Classification	Finance and Insurance
Website	https://www.mizuhobank.com/index.html	Corporate Form in Texas	Representative Office
Texas Address	5345 Towne Square Drive, Suite 285, Plano, TX 75024	Email in Texas	masahiro.kishimoto@mizuhogroup.com
Number of Employees	<Texas> 36 <Global> 27,659	Corporate Function in Texas	The U.S. headquarters is located outside of Texas
Year of Establishment	<Texas> 2018 <Japan> 1873	Contact Person in Texas	Masahiro Kishimoto, Director
Annual Sales	<Texas> - <Global> FY2024, USD 19.8Bn	Texas TEL	972-324-3345

Company and Product/Service Overview, Activities in Texas

Mizuho is one of the largest financial institutions in the world offering a broad range of financial services in more than 900 offices in 38 countries with over 140 years of banking experience. Mizuho has eight locations in the U.S., and Houston and Dallas Representatives opened in 2005 and 2018. We provide comprehensive financial services focusing on lending, deposits, and transaction banking services as well as settlement, leasing, derivatives, and various advisory services in cooperation with group companies such as Mizuho Securities.

Twenty years have passed since Mizuho was established. We aim to remain a reliable presence for our clients in an ever-changing world, continuing to serve as their best financial solutions partner and we promise to support the business expansion for all clients.





MUFG Bank, Ltd.

Japanese HQ	MUFG Bank, Ltd.	Industry Classification	Finance and Insurance
Website	https://www.mufgamericas.com/	Corporate Form in Texas	Agency
Texas Address	500 North Akard Street, Suite 3560, Dallas, TX 75201	Email in Texas	-
Number of Employees	<Texas> 246 <Global> 150,000	Corporate Function in Texas	The U.S. headquarters is located outside of Texas
Year of Establishment	<Texas> 1991 <Japan> 1919	Contact Person in Texas	Shiro Fukamachi/Managing Director, Head of Dallas Agency
Annual Sales	<Texas> - <Global> -	Texas TEL	214-954-1200


Company and Product/Service Overview, Activities in Texas

MUFG (Mitsubishi UFJ Financial Group) is one of the world’s leading financial groups. Headquartered in Tokyo and with approximately 360 years of history, MUFG is a global network with 1,800 offices in over 40 countries, offering services including commercial banking, trust banking, securities, credit cards, consumer finance, asset management, and leasing.

The Group’s operating companies include MUFG Bank, Mitsubishi UFJ Trust and Banking Corporation (Japan’s leading trust bank), and Mitsubishi UFJ Securities Holdings Co., Ltd., one of Japan’s largest securities firms.

Through close partnerships among our operating companies, the Group aims to be "committed to empowering a brighter future," as our Purpose, flexibly responding to all the financial needs of our customers, serving society, and fostering shared and sustainable growth for a better world.



Committed to empowering a brighter future. 



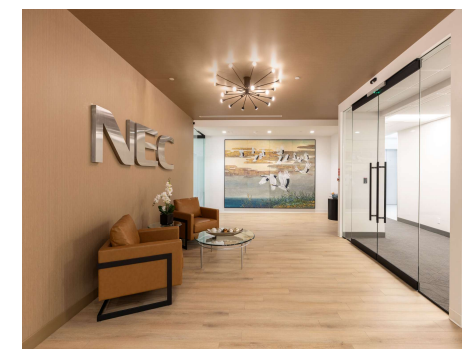
NEC Corporation of America

Japanese HQ	NEC Corporation	Industry Classification	Information
Website	www.necam.com	Corporate Form in Texas	Subsidiary
Texas Address	5205 N O'Connor Blvd., Suite 400, Irving, TX 75039	Email in Texas	naoto.takayanagi@necam.com
Number of Employees	<Texas> - <Global> 104,194	Corporate Function in Texas	U.S. headquarters
Year of Establishment	<Texas> 2001 <Japan> 1899	Contact Person in Texas	Naoto Takayanagi, Corporate Planning, Senior Strategic Planning Director
Annual Sales	<Texas> - <Global> 22.5 Billion USD / 3,423.4 Billion JPY	Texas TEL	214-262-2265

Company and Product/Service Overview, Activities in Texas

NEC Corporation of America (NEC) is committed to orchestrating a brighter world by providing solutions that make lives better. NEC works with organizations from single locations to large, global, complex businesses as well as governments, law enforcement agencies and non-profit organizations to digitally transform operations to better focus on the customer experience while improving safety, security and efficiency. NEC's innovative solutions create best-in-class experiences, increasingly infused with our artificial intelligence (AI) technology, supported by a robust partner ecosystem to solve today's most complex business and societal problems.

NEC develops and delivers a broad technology portfolio that includes artificial intelligence and biometrics, analytics, platform services, software and hardware, undersea submarine communication cable, as well as social infrastructure solutions. The company's solutions are used across multiple industries including aviation, entertainment, hospitality, retail, healthcare, education, finance, public sector and government agencies.



Nippon Express U.S.A., Inc.

Japanese HQ	NIPPON EXPRESS HOLDINGS, INC.	Industry Classification	Transportation and Warehousing
Website	https://www.nipponexpress-holdings.com/en/	Corporate Form in Texas	Branch Office
Texas Address	2520 Esters Blvd. Ste.100, DFW Airport, TX 75261	Email in Texas	daisuke.saeki@nipponexpress.com
Number of Employees	<Texas> 184 <Global> 73,482	Corporate Function in Texas	The U.S. headquarters is located outside of Texas
Year of Establishment	<Texas> 1975 <Japan> 2022	Contact Person in Texas	Daisuke Saeki / General Manager
Annual Sales	<Texas> - <Global> USD 17,777 million (as of December 2024)	Texas TEL	469-224-9000

Company and Product/Service Overview, Activities in Texas

NIPPON EXPRESS USA was established in 1962 as the first overseas subsidiary of Nippon Express. For nearly 60 years, we have provided comprehensive transportation services including Air and Ocean Import/Export, Warehousing, Trucking, and Moving services. Since 1975, we have locations in Laredo, McAllen, and El Paso along the Mexican border, in addition to Dallas, Houston, and San Antonio. We are expanding our business through a network of six locations, the largest number of locations among Japanese logistics companies.

Each location has its own warehouse, a total of 683,000 SQF, and provides high-quality logistics services through in-house systems and extensive training. We operate shuttle trucks that connect two major international hubs, DFW and IAH Airports, to various cities in Texas, providing a speedy Air cargo transportation network. In ocean freight forwarding, we provide our own transportation services which cover Port of Houston, West Coast, and East Coast in all directions. Utilizing our network of strengths, we operate daily milk-run trucking services between San Antonio, the center of the Texas automotive industry, and automotive suppliers in various Midwest cities, as well as cross-border trucking services to Mexico. Nippon Express has logistics capabilities to support your business in Texas, the U.S., and globally.



Nomura Research Institute IT Solutions America, Inc.

Japanese HQ	Nomura Research Institute, Ltd.	Industry Classification	Professional, Scientific, and Technical Services
Website	https://www.nri.com/en/company/map/overseas/america/it_solutions	Corporate Form in Texas	Subsidiary
Texas Address	8840 Cypress Waters Ste. 140 Dallas, TX 75019	Email in Texas	Contact@nri-itsa.com
Number of Employees	<Texas> 50 <Global> 10,000+	Corporate Function in Texas	U.S. headquarters
Year of Establishment	<Texas> 2008 <Japan> 1967	Contact Person in Texas	Toshiaki Shimizu
Annual Sales	<Texas> - <Global> -	Texas TEL	214-969-1033

Company and Product/Service Overview, Activities in Texas

Nomura Research Institute IT Solutions America, Inc. (NRI ITSA) is a global, business solutions company headquartered in Dallas, Texas. We dedicate ourselves to providing innovative IT solutions and services, scalable to a global level.

With an extensive partner network, we supply our customers with a service catalog that maximizes efficiencies world-wide, providing a value-oriented quality solution that can quickly adapt to an ever-changing business environment. Through detailed analysis and assessment, the NRI ITSA team develops plans which strategically guide our clients to a competitive advantage in their industry. We generate unique paradigm shifting solutions by analyzing each client's current business situation and existing pain points.

We work side by side with our customers to better understand their company's vision, strategies, and business processes, creating unique business solutions that navigate them ahead of their competition. It is NRI ITSA's goal to support our clients as they dream up their future, actively working to transform those visionary dreams into reality.





NTT DATA Services (NTT DATA, Inc.)

Japanese HQ	NTT DATA Group Corporation	Industry Classification	Information
Website	https://www.nttdata.com/global/en/ (NTT DATA Group) https://us.nttdata.com/en/ (NTT DATA Americas)	Corporate Form in Texas	Subsidiary
Texas Address	7950 Legacy Drive Floor 12th Floor, Plano, Texas 75024	Email in Texas	-
Number of Employees	<Texas> 2,500+ <Global> 200,000	Corporate Function in Texas	U.S. headquarters
Year of Establishment	<Texas> 2015 <Japan> 1988	Contact Person in Texas	Hisashi Takahashi, JMNC Business Unit, Senior Director
Annual Sales	<Texas> - <Global> \$29 billion	Texas TEL	-

Company and Product/Service Overview, Activities in Texas

NTT DATA - a part of NTT Group - is a trusted global innovator of IT and business services headquartered in Tokyo. We help clients transform through consulting, industry solutions, business process services, IT modernization and managed services, in over 50 countries. Headquartered in Plano, Texas, NTT DATA Americas, Inc. is the hub of our North American business.

We deliver consulting, industry expertise, and digital solutions that simplify complex business and technology challenges. Our current focus extends beyond cloud, automation, and AI to include Agentic AI, sustainability services, and edge solutions—helping clients accelerate transformation while building long-term resilience. These capabilities are applied across manufacturing, healthcare, financial services, and the public sector, reflecting the diversity and scale of the North American market. We emphasize close collaboration—across NTT Group companies and with our clients—to create scalable, practical solutions. By combining foresight, business insight, and advanced technology, we help enterprises adapt to market change, unlock value, and contribute to a more sustainable society.

Top Employer

Certified as a Top Employer 2024*1 in 29 countries and four regions





Open House Texas Realty & Investments LLC

Japanese HQ	Open House Group Co.,LTD.	Industry Classification	Real Estate and Rental and Leasing
Website	https://openhouse-us.com/	Corporate Form in Texas	Subsidiary
Texas Address	5050 Quorum Dr, Suite 225, Dallas, TX 75254	Email in Texas	contact@openhouse-group.com
Number of Employees	<Texas> 107 <Global> 5,990	Corporate Function in Texas	The U.S. headquarters is located outside of Texas
Year of Establishment	<Texas> 2016 <Japan> 1997	Contact Person in Texas	Atsushi Kobayashi (President)
Annual Sales	<Texas> Approx. 25 billion JPY (2024.9) <Global> 1 trillion, 295 billion JPY (2024.9)	Texas TEL	-

Company and Product/Service Overview, Activities in Texas

Open House Texas Realty and Investments is a subsidiary of Open House Co., Ltd., a Japanese company based in Tokyo, Japan, and it's a real estate investment company which purchases, manages, and resells detached housing properties for overseas investors.

Panasonic Corporation of North America

Japanese HQ	Panasonic Holdings Corporation	Industry Classification	Manufacture of Electrical Equipment
Website	https://na.panasonic.com/us	Corporate Form in Texas	Subsidiary
Texas Address	3461 Plano Pkwy, The Colony, TX 75056	Email in Texas	Minoru.Kondo@us.panasonic.com
Number of Employees	<Texas> 65 <Global> 207,548	Corporate Function in Texas	The U.S. headquarters is located outside of Texas
Year of Establishment	<Texas> 2025 <Japan> 1918	Contact Person in Texas	Minoru Kondo/ President
Annual Sales	<Texas> approx. 1.2 billion USD(2024) <Global> 8,458 billion JPY(2024)	Texas TEL	214-287-9614

Company and Product/Service Overview, Activities in Texas

Panasonic Energy Sales Company of America (PECSA) is engaged in the sales of primary batteries, cylindrical lithium-ion batteries for automotive applications, lithium-ion batteries for industrial and consumer use, energy storage modules, and nickel-metal hydride batteries for the North American market. The company also develops lithium-ion battery packs for industrial and consumer applications and manages and operates its affiliated pack manufacturing facility (PEMX). PECSA contributes to society by solving diverse “energy issues” from the world’s largest and most advanced North American market.





Quick USA, Inc.

Japanese HQ	QUICK CO.,LTD.	Industry Classification	Professional, Scientific, and Technical Services
Website	https://www.919usa.com/e/	Corporate Form in Texas	Branch Office
Texas Address	5525 Granite Parkway, Suite 740 Plano, Texas 75024 USA	Email in Texas	quickt@919usa.com
Number of Employees	<Texas> 14 <Global> 2,021	Corporate Function in Texas	The U.S. headquarters is located outside of Texas
Year of Establishment	<Texas> 2022 <Japan> 1980	Contact Person in Texas	Takami Iwashita
Annual Sales	<Texas> - <Global> -	Texas TEL	214-813-8821

Company and Product/Service Overview, Activities in Texas

QUICK USA, Inc. is the U.S. subsidiary of QUICK CO., LTD. (Stock Code: 4318), a corporation listed on the Prime Market of the Tokyo Stock Exchange in Japan.

As a member of the QUICK Group, we operate from nine locations across North America—New York, Los Angeles, Orange County, Dallas, Chicago, Atlanta, Detroit, and Mexico (Aguascalientes and Querétaro). Guided by the QUICK Group's management philosophy of "Making All Involved Happy," we are dedicated to connecting people with companies. We provide comprehensive human resource services throughout North America, including direct-hire recruitment and temporary staffing.

By building our talent network from a global perspective, we are committed to sincerely and reliably meeting the needs of our stakeholders: serving as a trusted recruiting consultant for our registered candidates, and as a professional HR strategy partner for our corporate clients.

SCSK USA Inc.

Japanese HQ	SCSK Corporation	Industry Classification	Information
Website	https://www.scskusa.com/	Corporate Form in Texas	Subsidiary
Texas Address	7701 Las Colinas Ridge, Suite 200, Irving, TX 75063	Email in Texas	contacts@scskusa.com
Number of Employees	<Texas> 36 <Global> 20,252	Corporate Function in Texas	The U.S. headquarters is located outside of Texas
Year of Establishment	<Texas> 1993 <Japan>1969	Contact Person in Texas	-
Annual Sales	<Global> \$4,036million (\$1=147 consolidated for the fiscal year ending March 2025)	Texas TEL	-

Company and Product/Service Overview, Activities in Texas

SCSK USA Inc. was established in 1987 as a fully-owned subsidiary of Sumisho Computer Systems Corporation, a Japanese IT services company, which was merged with CSK Corporation effective October 1, 2011, and now doing the business under the name of SCSK Corporation. With headquarters in New York City and branch offices located in Irving, TX and Santa Clara, CA, SCSK USA Inc. is positioned to provide "one stop" service as a strategic business partner to Japanese-related corporations operating in the United States. Services include IT Consulting, Application Development, Infrastructure/ Network Development, Security, Outsourcing/ Help Desk Services and DX support.

As a member of the SCSK Group of companies that includes SCSK Corporation in Japan, SCSK Europe Ltd., in the United Kingdom, SCSK Asia Pacific Pte. Ltd., in Singapore and SCSK Shanghai Limited located in the People’s Republic of China, PT SCSK GLOBAL INDONESIA, SCSK Myanmar Ltd., SCSK USA Inc. is part of a global network of professionals dedicated to international IT service. Also, we explore the Best-of-Breed technologies and introduce the leading-edge product to the Japanese market.





SMC Corporation of America

Japanese HQ	SMC Corporation	Industry Classification	Manufacturing
Website	https://www.smcusa.com/	Corporate Form in Texas	Branch Office
Texas Address	Corporate Crossing at Waters Ridge, 520 E. Corporate Drive, Suite 600, Lewisville, TX 75057	Email in Texas	joishi@smcusa.com
Number of Employees	<Texas> - <Global> -	Corporate Function in Texas	The U.S. headquarters is located outside of Texas
Year of Establishment	<Texas> 1977 <Japan> 1959	Contact Person in Texas	Jumpei Oishi
Annual Sales	<Texas> - <Global> -	Texas TEL	512-621-9363

Company and Product/Service Overview, Activities in Texas

SMC Corporation of America is a part of a global organization that supports our customers in every industrialized country and is the U.S. subsidiary of SMC Corporation based in Japan. Since its establishment, SMC has been a leader in pneumatic technology, providing industry with technology and products to support automation based on the guiding principle of “contributing to automation labor savings in industry.” Over the past 50+ years, SMC's products have become established as a recognized international brand through sales, technical, supply and after sale services in world markets. Sales have grown to achieve a 35% global market share.

Subsidiaries and joint ventures have been setup in a total of 53 countries. Production facilities are located in 30 countries. In addition, a sales network extends throughout 83 countries, with local services in 500 locations. SMC offers technology accumulated through the years, engineers that bring it to life in new products, production capacity which can deliver a variety of products in a short time, and an extensive sales network in the U.S. and throughout the world.

With its goal of ever more advanced automation, and using its many achievements as a base, SMC is developing high quality, highly reliable products to contribute to automation in industry, as well as in familiar areas of everyday life.

SMC is dedicated to deliver first-class business solutions to our customers through superior products and top-notch customer service by creating an environment for our employees where each person is valued, challenged to reach his or her full potential, and contributes to the growth of the company, community and themselves.

In Texas, there are 3 local sales offices.





SOMPO

Japanese HQ	Sompo Japan Insurance Inc.	Industry Classification	Finance and Insurance
Website	https://www.sompo-intl.com/	Corporate Form in Texas	Subsidiary
Texas Address	12222 Merit Drive, Suite 950, Dallas, TX 75251	Email in Texas	https://www.sompo-intl.com/contact-us/
Number of Employees	<Texas> 88 <Global> 62,600	Corporate Function in Texas	The U.S. headquarters is located outside of Texas
Year of Establishment	<Texas> 2019 <Japan> 1888	Contact Person in Texas	Takayuki Kyuka - VP, South Central Client Relationship Leader, Asian Risk Solutions
Annual Sales	<Texas> - <Global> JPY 5,453.7 Billion (FY2024)	Texas TEL	972-349-4306

Company and Product/Service Overview, Activities in Texas

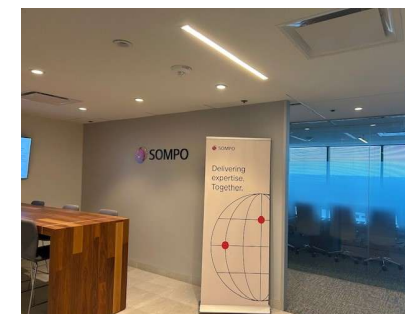
We are Sompo, a global provider of property, casualty, and specialty insurance and reinsurance. Building on Sompo's 135 years of innovation, we seek to deliver a unified approach to servicing and providing customized solutions for our clients, ensuring that we meet their needs effectively and consistently. We strive to strengthen engagement with our clients and business partners every day by using the in-depth knowledge and insights of our experts to swiftly navigate the ever-shifting risk landscape in a fast and agile way – providing them with the products and coverages they need – underpinned by exceptional levels of service.

Our values

As we continue to evolve and grow, our core values serve as the foundation for our company’s identity, purpose and culture.

- Accountability: Raising the bar on what we deliver
- Agility: Keeping it simple as we grow
- Collaboration: Building relationships with clients and colleagues
- Development: Being curious and having a growth mindset
- Integrity: Being trustworthy and doing what’s right

Around the world, we use our expertise to learn, improve and find clear answers for your complex challenges. Because when you choose Sompo, you choose the ease of expertise.





Sumitomo Precision USA, Inc.

Japanese HQ	Sumitomo Precision Products Co., Ltd.	Industry Classification	Manufacturing
Website	https://spu-usa.com/	Corporate Form in Texas	Subsidiary
Texas Address	1639 Falcon Drive, DeSoto, TX 75115, USA	Email in Texas	-
Number of Employees	<Texas> 14 <Global> 1,701	Corporate Function in Texas	U.S. headquarters
Year of Establishment	<Texas> 2000 <Japan> 1961	Contact Person in Texas	-
Annual Sales	<Texas> - <Global> -	Texas TEL	-

Company and Product/Service Overview, Activities in Texas

Maintenance, Repair, Overhaul (MRO) of Heat Exchangers for Commercial Aircraft, and Spare Parts Distribution.

Taisei USA LLC

Japanese HQ	Taisei Corporation	Industry Classification	Real Estate and Rental and Leasing
Website	https://www.taisei-techsolu.jp/solution/d_Inter_develop/	Corporate Form in Texas	Subsidiary
Texas Address	5550 Granite Pkwy, Plano, TX 75024	Email in Texas	-
Number of Employees	<Texas> 6 <Global> 9,500	Corporate Function in Texas	U.S. headquarters
Year of Establishment	<Texas> 2023 <Japan> 1873	Contact Person in Texas	Katsunori Tamura/COO
Annual Sales	<Texas> - <Global> USD 14.1B	Texas TEL	-

Company and Product/Service Overview, Activities in Texas

Taisei USA LLC, has begun participation in real estate development projects from the acquisition of two existing office buildings in Boston in 2020. Since then, we have been actively involved in residence and office development projects in various cities across the country. It is our objective to actively engage in development and conversion projects as well as acquiring existing properties, main targets of which encompass diverse assets, including offices, residences, and logistics facilities. We see the United States as a high growth potential and stable market. We aim to accurately capture the US real estate market to achieve this objective.

Tokio Marine America Dallas Branch

Japanese HQ	Tokio Marine & Nichido Fire Insurance Co., Ltd.	Industry Classification	Finance and Insurance
Website	https://tmamerica.com/	Corporate Form in Texas	Branch Office
Texas Address	5340 Legacy Drive, Suite 135, Plano, TX 75024	Email in Texas	alex.koyama@tmamerica.com
Number of Employees	<Texas> 37 <Global> 51,436	Corporate Function in Texas	The U.S. headquarters is located outside of Texas
Year of Establishment	<Texas> 2016 <Japan> 1879	Contact Person in Texas	Yohei Koyama, Vice President & Dallas Branch Manager
Annual Sales	<Texas> - <Global> JPY5,305.1 Billion	Texas TEL	682-381-9267

Company and Product/Service Overview, Activities in Texas

With over a 100-year history in the U.S., Tokio Marine America (TMA) offers tailored products to a diverse range of customers - from small to large-sized global businesses seeking traditional multi-line coverage, to larger private and public companies requiring full risk management solutions.

Our commitment to providing the highest level of service is paramount. More than 93% of our customers recommend TMA based on our superior claims service. TMA enjoys an A++(Superior) rating from A.M. Best. With a solid foundation of financial stability, our strength lies in understanding your business and working in partnership to exceed your expectations.





Toyo Cotton Co.

Japanese HQ	Toyo Cotton(Japan) Co.	Industry Classification	Wholesale Trade
Website	https://www.toyocotton.co.jp/dallas_tx_usa/	Corporate Form in Texas	Subsidiary
Texas Address	11611 Forest Central Drive, Dallas, Texas 75243	Email in Texas	dalzz@toyocotton.com
Number of Employees	<Texas> 16 <Global> 37	Corporate Function in Texas	U.S. headquarters
Year of Establishment	<Texas> 1952 <Japan> 1920	Contact Person in Texas	Mr. Naotaka Ueda, Vice President
Annual Sales	<Texas> - <Global> -	Texas TEL	214-349-1376

Company and Product/Service Overview, Activities in Texas

We buy U.S. and Mexican raw cotton and export to Japan, China, Far Eastern Asian countries, Europe and Central/South American countries.



Toyota Motor North America, Inc.

Japanese HQ	Toyota Motor Corporation	Industry Classification	Equipment Transportation (Automobiles/Motorcycles)
Website	https://www.toyota.com/	Corporate Form in Texas	Subsidiary
Texas Address	6565 Headquarters Dr, Plano, TX 75024	Email in Texas	https://www.toyota.com/support/contact-us
Number of Employees	<Texas> Approx. 5,900 <Global> Approx. 64,000 (NA consolidated)	Corporate Function in Texas	U.S. headquarters
Year of Establishment	<Texas> 2017 (Relocate) <Japan> 1937	Contact Person in Texas	-
Annual Sales	<Texas>- <Global> JPY 48.0Trillion (2024)	Texas TEL	800-331-4331

Company and Product/Service Overview, Activities in Texas

Toyota (NYSE: TM) has been a part of the cultural fabric in the U.S. and North America for more than 65 years and is committed to advancing sustainable, next-generation mobility through our Toyota and Lexus brands.

During that time, Toyota has created a tremendous value chain as our teams have contributed to the world-class design, engineering, and assembly of cars and trucks in North America, where we have 14 manufacturing plants, 15 including our joint venture in Alabama (12 in the U.S.), and directly employ more than 63,000 people in North America.

Our 1,800 North American dealerships (nearly 1,500 in the U.S.) sold nearly 2.70 million cars and trucks in 2024. Since 2017, as part of the "One Toyota" initiative, all operations in North America (R&D, manufacturing, sales, marketing, after-sales and corporate functions) are conducted under "Toyota Motor North America (TMNA)"



Austin and the Surrounding Area

Austin, Pflugerville

HORIBA Instruments Incorporated, Austin Office

Japanese HQ	HORIBA, Ltd.	Industry Classification	Precision equipment manufacturing and sales
Website	https://www.horiba.com/en_en/	Corporate Form in Texas	Subsidiary
Texas Address	9701 Dessau Road, Suite 605 Austin Texas 78754 USA	Email in Texas	-
Number of Employees	<Texas> 74 <Global> 8,955	Corporate Function in Texas	The U.S. headquarters is located outside of Texas
Year of Establishment	<Texas> 1996 <Japan> 1953	Contact Person in Texas	Yuga Yamamoto
Annual Sales	<Texas> 234 Million USD <Global> 317.37 Billion JPY	Texas TEL	512-815-1301

Company and Product/Service Overview, Activities in Texas

HORIBA have developed a line-up of fluid control, vaporization, analytical equipment and measuring systems tailored to every stage of the semiconductor, FPD manufacturing process, and the other wide range of manufacturing process. In all stages, from materials evaluation through to final inspection, HORIBA products will help maintain high efficiency in your process.

Our products include Mass Flow Controllers and Mass Flow Meters including High Temperature Mass Flow and Liquid Mass Flow. Liquid Automatic Refill Systems, Liquid Vaporizers, Mixed Injection Systems and Gas Concentration Monitors. HORIBA Instruments Incorporated Austin Office is distributor and service facility for Horiba Semiconductor product.

Fluid Control



Fluid Control Systems



Dry Process Control





JET AMERICA INC.

Japanese HQ	J.E.T.Co.,LTD	Industry Classification	Other (Semiconductor Production Equipment)
Website	https://www.jet-wet.com/	Corporate Form in Texas	Subsidiary
Texas Address	100 E Royal Lane Irving, TX 75039-4214	Email in Texas	masato_minatani@jetcoltd.co.jp
Number of Employees	<Texas> 3 <Global> 330	Corporate Function in Texas	U.S. headquarters
Year of Establishment	<Texas>2023 <Japan> 2009	Contact Person in Texas	Masato Minatani President
Annual Sales	<Texas> 4.5MUSD <Global> 119MUSD	Texas TEL	682-999-0232

Company and Product/Service Overview, Activities in Texas

JET America, based in Okayama with over 55 years of history, supplies wafer cleaning equipment to semiconductor manufacturers. We hold the world's #3 share in batch systems and offer unique patented single-wafer technology, adopted for Rapidus' cutting-edge 2nm semiconductors. In addition, we are expanding nationwide in the U.S. with a patented ultrasonic wastewater separation system, offering high environmental and cost benefits, establishing a new standard in wastewater treatment.



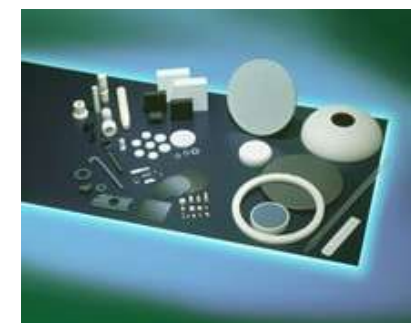


Kyocera International, Inc. Austin Office

Japanese HQ	Kyocera Corporation	Industry Classification	Professional, Scientific, and Technical Services
Website	www.kyocera.com/fc	Corporate Form in Texas	Branch Office
Texas Address	Echelon IV - Suite 100 9430 Research Blvd. / Austin, TX 78759	Email in Texas	fcsales@kyocera.com
Number of Employees	<Texas> 10 <Global> 77,136	Corporate Function in Texas	The U.S. headquarters is located outside of Texas
Year of Establishment	<Texas> 2000 <Japan> 1959	Contact Person in Texas	-
Annual Sales	<Texas> - <Global> 2.0 Trillion Yen (FY2025)	Texas TEL	-

Company and Product/Service Overview, Activities in Texas

Established in 1959, Kyocera offers a wide range of technical ceramic components out of materials such as alumina, silicon nitride, silicon carbide, zirconia, sapphire and others. Kyocera Austin office is located in the heart of Texas and has been supporting the business of manufacturing industries including semiconductor, oil & gas, aerospace and automotive in the Southwestern & Southeastern United States by providing Kyocera's superior products.





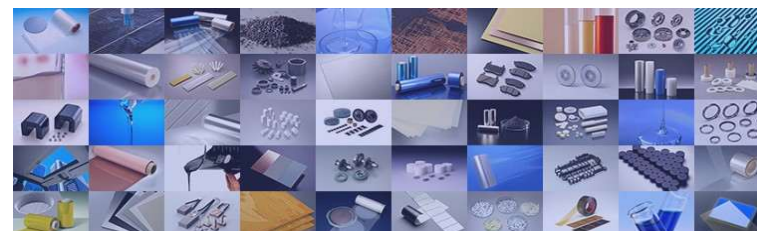
Resonac America, Inc.

Japanese HQ	Resonac Holdings Corporation	Industry Classification	Wholesale Trade
Website	https://am.resonac.com/	Corporate Form in Texas	Subsidiary
Texas Address	9101 Burnet Rd Suite 105, Austin, TX, 78758	Email in Texas	kim.jongjoon.xmvtf@resonac.com
Number of Employees	<Texas> 7 <Global> 23,936	Corporate Function in Texas	The U.S. headquarters is located outside of Texas
Year of Establishment	<Texas> 2017 <Japan> 1939	Contact Person in Texas	Jongjoon Kim, Sales Manager of Electronics
Annual Sales	<Texas> - <Global> USD 9.09 billion in 2024	Texas TEL	512-237-7786

Company and Product/Service Overview, Activities in Texas

Resonac Corporation is a chemical manufacturer established through the integration of Showa Denko and Showa Denko Materials (formerly Hitachi Chemical). Guided by the corporate philosophy of "change society through the power of chemistry," Resonac offers a wide range of products including semiconductor materials (both front-end and back-end), electronic materials, automotive components, lithium-ion battery materials, petrochemical products, and functional resins. These products serve industries such as energy, environment, information, and electronics. Resonac contributes to technological innovation through co-creation, leveraging its specialized research facilities and materials technologies in semiconductor packaging.

Resonac America, the U.S. subsidiary of the Resonac Group, is responsible for the sales and marketing of chemical products. Its Austin location primarily engages in the wholesale of semiconductor material products and is also strengthening collaboration with the region's semiconductor industry.





SMC Corporation of America

Japanese HQ	SMC Corporation	Industry Classification	Manufacturing
Website	https://www.smcusa.com/	Corporate Form in Texas	Branch Office
Texas Address	9233 Waterford Centre, Suite 200, Austin, TX, 78758	Email in Texas	oishi.jumpei@smc.com
Number of Employees	<Texas> - <Global> -	Corporate Function in Texas	The U.S. headquarters is located outside of Texas
Year of Establishment	<Texas> 1977 <Japan> 1959	Contact Person in Texas	Jumpei Oishi
Annual Sales	<Texas> - <Global> -	Texas TEL	512-621-9363

Company and Product/Service Overview, Activities in Texas

SMC Corporation of America is a part of a global organization that supports our customers in every industrialized country and is the U.S. subsidiary of SMC Corporation based in Japan. Since its establishment, SMC has been a leader in pneumatic technology, providing industry with technology and products to support automation based on the guiding principle of “contributing to automation labor savings in industry.” Over the past 50+ years, SMC's products have become established as a recognized international brand through sales, technical, supply and after sale services in world markets. Sales have grown to achieve a 35% global market share.

Subsidiaries and joint ventures have been setup in a total of 53 countries. Production facilities are located in 30 countries. In addition, a sales network extends throughout 83 countries, with local services in 500 locations. SMC offers technology accumulated through the years, engineers that bring it to life in new products, production capacity which can deliver a variety of products in a short time, and an extensive sales network in the U.S. and throughout the world.

With its goal of ever more advanced automation, and using its many achievements as a base, SMC is developing high quality, highly reliable products to contribute to automation in industry, as well as in familiar areas of everyday life.

SMC is dedicated to deliver first-class business solutions to our customers through superior products and top-notch customer service by creating an environment for our employees where each person is valued, challenged to reach his or her full potential, and contributes to the growth of the company, community and themselves.

In Texas, there are 3 local sales offices.





Tokyo Electron U.S. Holdings, Inc. / Tokyo Electron America, Inc.

Japanese HQ	Tokyo Electron Limited	Industry Classification	Professional, Scientific, and Technical Services
Website	www.tel.com	Corporate Form in Texas	Subsidiary
Texas Address	401 S 1st St, Suite 900, Austin, TX 78704	Email in Texas	-
Number of Employees	<Texas> 585 <Global>19,573	Corporate Function in Texas	U.S. headquarters
Year of Establishment	<Texas> 1996 <Japan>1963	Contact Person in Texas	-
Annual Sales	<Texas> - <Global> JPY 2,431.5 Billion (FY2025)	Texas TEL	-

Company and Product/Service Overview, Activities in Texas

As a leading global company of innovative semiconductor production equipment, Tokyo Electron (TEL) engages in development, manufacturing, and sales in a wide range of product fields.

All of TEL's semiconductor production equipment product lines maintain high market shares in their respective global segments.

TEL provides outstanding products and services to customers through a global network in the U.S., Europe, and Asia.

Tokyo Electron U.S. Holdings, Inc.:

U.S. Headquarters and holding company for TEL U.S. subsidiaries

Tokyo Electron America, Inc.:

U.S. Sales & Service Headquarter



San Antonio and the Surrounding Area

San Antonio, Cibolo, Harlingen, Universal City

AISIN TEXAS CORPORATION

Japanese HQ	AISIN CORPORATION	Industry Classification	Automotive parts manufacturing
Website	https://aw-texas.com	Corporate Form in Texas	Subsidiary
Texas Address	565 Bolton Road, Cibolo, TX 78124	Email in Texas	kishikawa@aw-tx.com
Number of Employees	<Texas> 1085(as of March end 2025) <Global> About 115,000(as of March end 2025)	Corporate Function in Texas	The U.S headquarters is located outside of Texas
Year of Establishment	<Texas>2019 <Japan> 1965	Contact Person in Texas	Kiwamu Ishikawa
Annual Sales	<Texas> USD 1,032Million (as of March end 2025) <Global> About 4,896,104 Million JPY (as of March end 2025)	Texas TEL	830-420-9161

Company and Product/Service Overview, Activities in Texas

AISIN TEXAS CORPORATION(ATX) was established in Cibolo,Texas in 2019 and started to manufacture 10th speed Automatic Transmission from September End in 2021, Hybrid Transmission from January in 2022 for Toyota Motor Manufacturing, Texas, Inc., 8th speed Automatic Transmission from October in 2023, Hybrid Transmission from March in 2024 for Toyota Motor Manufacturing de Guanajuato and Toyota Motor Manufacturing de Baja California S. de R.L. de C.V.

Our basic principle is to sustain corporate growth and ensure the well-being of our employees by contributing to customers and society with supreme products and services.

ATX goal is to realize our company concept that we create a "Monozukuri Company" that continues to develop and grows together with Texas(AISIN TEXAS employees and the region)and to be a Plant of the future.





Aloe Laboratories, Inc.

Japanese HQ	Harmony Green Corp.	Industry Classification	Food/Cosmetic manufacturing
Website	https://aloelabs.com/	Corporate Form in Texas	Subsidiary
Texas Address	5821 East Harrison Avenue, Harlingen, TX 78550	Email in Texas	kbaba@aloelabs.com
Number of Employees	<Texas> 33 <Global> -	Corporate Function in Texas	U.S. headquarters
Year of Establishment	<Texas> 2000 <Japan> 1995	Contact Person in Texas	Kosuke Baba, Vice President
Annual Sales	<Texas> - <Global> -	Texas TEL	956-428-8416

Company and Product/Service Overview, Activities in Texas

Aloe Laboratories, Inc. (Aloe Labs) produces a variety of aloe vera juices, concentrates, freeze-dried powders as well as cosmetic ingredients with varying characteristics as desired by the customer. We also can manufacture Private Label products.

Aloe Labs has organic aloe vera field. It is vertically integrated which means we control the source of the aloe vera as well as the production up to shipping to the customer.





American Katerra, LLC

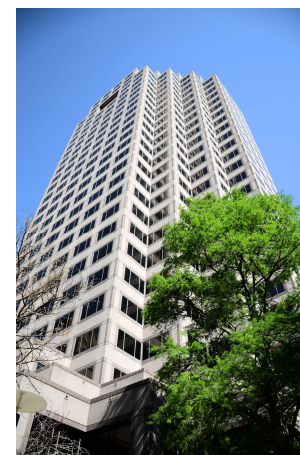
Japanese HQ	Yamaguchi Heavy Industries, Ltd.	Industry Classification	Construction
Website	https://katerra-us.com	Corporate Form in Texas	Subsidiary
Texas Address	112 East Pecan St, Suite 1380, San Antonio, TX 78205	Email in Texas	tx@katerra-us.com
Number of Employees	<Texas> 3 <Global> 60	Corporate Function in Texas	U.S. headquarters
Year of Establishment	<Texas> 2024 <Japan> 1949	Contact Person in Texas	Toyokazu Yamaguchi
Annual Sales	<Texas> - <Global> -	Texas TEL	210-239-7960

Company and Product/Service Overview, Activities in Texas

Established on October 21, 2024, in San Antonio, Texas, American Katerra, LLC is backed by the 75-year heritage of its parent company, Yamaguchi Heavy Industries in Japan. We merge Japanese precision with American innovation. Operating under our “Purpose Management 2050” framework, we are dedicated to a singular purpose: “Beyond the Information Revolution, Happiness for Everyone Through the Innovation of Products.” Guided by our vision to “Build for Dreams,” we strive to enhance society through the development of high-quality steel products.

As a sustainability-focused steel fabricator, we deliver advanced decarbonization solutions. Our flagship offerings, Green Carbon Steel™ and Blue Carbon Steel™—registered in Japan with U.S. trademarks pending—drive supply chain decarbonization, complemented by our comprehensive eco-friendly construction solutions and precise GHG emission calculation services.

Our roadmap centers on the 2028 launch of a state-of-the-art Smart Factory in San Antonio to secure a domestic supply of sustainable materials. Dedicated to local job creation and upskilling talent to boost the Texas economy, American Katerra is charting a strategic path toward a 2030 listing on the Texas Stock Exchange (TXSE), establishing a long-term foundation for green infrastructure in the United States.



Nippon Express U.S.A., Inc.

Japanese HQ	NIPPON EXPRESS HOLDINGS, INC.	Industry Classification	Transportation and Warehousing
Website	https://www.nipponexpress-holdings.com/en/	Corporate Form in Texas	Branch Office
Texas Address	7625 E IH-10, STE 100, Converse, TX 78109	Email in Texas	naoko.brown@nipponexpress.com
Number of Employees	<Texas> 14 <Global> 73,482	Corporate Function in Texas	The U.S. headquarters is located outside of Texas
Year of Establishment	<Texas> 1975 <Japan> 2022	Contact Person in Texas	Naoko Brown / Branch Manager
Annual Sales	<Texas> - <Global> USD 17,777 million (as of December 2024)	Texas TEL	210-922-2114

Company and Product/Service Overview, Activities in Texas

NIPPON EXPRESS USA was established in 1962 as the first overseas subsidiary of Nippon Express. For nearly 60 years, we have provided comprehensive transportation services including Air and Ocean Import/Export, Warehousing, Trucking, and Moving services. Since 1975, we have locations in Laredo, McAllen, and El Paso along the Mexican border, in addition to Dallas, Houston, and San Antonio. We are expanding our business through a network of six locations, the largest number of locations among Japanese logistics companies.

Each location has its own warehouse, a total of 683,000 SQF, and provides high-quality logistics services through in-house systems and extensive training. We operate shuttle trucks that connect two major international hubs, DFW and IAH Airports, to various cities in Texas, providing a speedy Air cargo transportation network. In ocean freight forwarding, we provide our own transportation services which cover Port of Houston, West Coast, and East Coast in all directions. Utilizing our network of strengths, we operate daily milk-run trucking services between San Antonio, the center of the Texas automotive industry, and automotive suppliers in various Midwest cities, as well as cross-border trucking services to Mexico. Nippon Express has logistics capabilities to support your business in Texas, the U.S., and globally.





NISSEI AMERICA, INC.

Japanese HQ	NISSEI PLASTIC INDUSTRIAL CO., LTD.	Industry Classification	Manufacturing and Sales of Machinery
Website	https://www.nisseiamerica.com	Corporate Form in Texas	Subsidiary
Texas Address	3730 Global Way, San Antonio, TX 78235	Email in Texas	info@nisseiamerica.com
Number of Employees	<Texas> 63 <Global>1,353	Corporate Function in Texas	U.S. headquarters
Year of Establishment	<Texas> 1977 <Global> 1947	Contact Person in Texas	-
Annual Sales	<Texas> - <Global> -	Texas TEL	714-693-3000

Company and Product/Service Overview, Activities in Texas

NISSEI has been specializing in the field of injection molding, digging deeper, and pushing the envelope in utilizing its technology for a wide variety of applications since its inauguration in 1947.

With our motto of "Going Specific, Deeper, and Unlimited," we have been making ongoing effort in researching and developing the injection molding machines as well as its molds, molding support systems, and mold processing technologies.

In spite of globalizing markets and diversifying needs in today's industry, we are emphasizing that shop floor is the center of the molding businesses and utilizing our accumulated original technologies to provide solutions to the customers with one-to-one approach.

We will always be committed to developing technologies that enrich our lives and benefit our industrial societies as well as pursuing environment-conscious valuable manufacturing.

Thank you for your continued patronage and support to NISSEI.





OKAYASU RUBBER

Okayasu Rubber America, Inc.

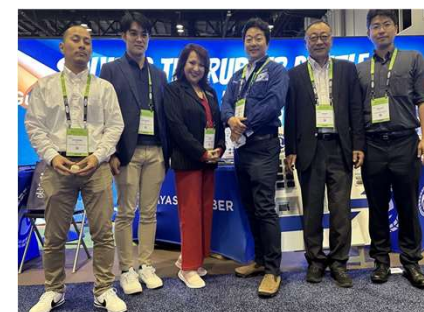
Japanese HQ	Okayasu Rubber Co.,Ltd.	Industry Classification	Wholesale Trade
Website	https://okayasu-rubber.com/	Corporate Form in Texas	Subsidiary
Texas Address	12762 O'Connor Road San Antonio, TX 78233	Email in Texas	sales.promotion@okayasu-rubber.com
Number of Employees	<Texas> 10 <Global> 250	Corporate Function in Texas	U.S. headquarters
Year of Establishment	<Texas> 2022 <Japan> 1947	Contact Person in Texas	Makoto Suzuki/ Vice President
Annual Sales	<Texas> USD 680K (2024) <Global> USD 20M (2024)	Texas TEL	210-880-1310

Company and Product/Service Overview, Activities in Texas

Okayasu Rubber America, Inc., based in San Antonio, Texas, is a U.S. subsidiary of Okayasu Rubber Co., Ltd. in Japan. We provide high-quality rubber and plastic products for a wide range of industries, including the automotive sector. Leveraging the advanced technology and quality standards developed in Japan, we are committed to delivering reliable solutions tailored to the needs of our customers in the United States.

Our core business includes supplying industrial rubber components, sealing materials, extruded products, and sponge materials, along with technical support. Looking ahead, we plan to strengthen our local production capabilities, including extrusion processing, to offer an integrated service from procurement to processing and delivery.

Guided by the principle of being a “Trusted Partner,” Okayasu Rubber America strives to serve as a bridge between Japanese and U.S. industries while contributing to sustainable growth and the local community.



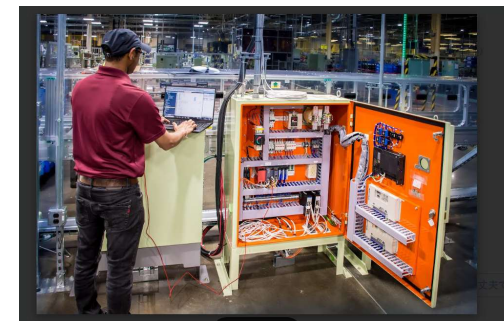
Shiratsuki North America, Inc.

Japanese HQ	Shiratsuki Co.,Ltd	Industry Classification	Automation Control/Electrical Engineering/Mechanical Engineering
Website	http://www.shiratsuki.co.jp http://gosnai.com	Corporate Form in Texas	Branch Office
Texas Address	1740 Universal city blvd., suite 212, Universal City, Tx 78148	Email in Texas	miwa@gosnai.com
Number of Employees	<Texas> - <Global>-	Corporate Function in Texas	The U.S. headquarters is located outside of Texas
Year of Establishment	<Texas> 2020 <Japan> 1954	Contact Person in Texas	Miwa McFadden
Annual Sales	<Texas> - <Global> -	Texas TEL	210-236-7105

Company and Product/Service Overview, Activities in Texas

Shiratsuki North America, Inc.(SNAI) offers comprehensive factory automation solutions and services to improve manufacturing efficiency and to maintain quality standards for our clients. From initial design and custom fabrication to installation, support, and continuous optimization, SNAI ensures seamless coordination across every phase of production.

SNAI was incorporated in North Carolina on July 14, 2016, as a U.S. subsidiary of Shiratsuki Co., Ltd. (SC) of Japan. SC, founded in 1954 and headquartered in Nagoya, Aichi, Japan, is the sole owner of SNAI through fully funded initial capital. In 2020, SNAI expanded its U.S. presence by opening a regional office in the San Antonio, Texas area.





Toyoda Gosei Texas, LLC

Japanese HQ	Toyoda Gosei Co.Ltd	Industry Classification	Automotive Parts Manufacturing
Website	www.toyoda-gosei.com	Corporate Form in Texas	Subsidiary
Texas Address	1 Lone Star Pass Building 31 San Antonio TX 78264	Email in Texas	kenji.kotani@toyodagosei.com
Number of Employees	<Texas> 601 <Global> 38,823	Corporate Function in Texas	The U.S. headquarters is located outside of Texas
Year of Establishment	<Texas> 2005 <Japan> 1949	Contact Person in Texas	Kenji Kotani
Annual Sales	<Texas> - <Global> -	Texas TEL	210-632-0417

Company and Product/Service Overview, Activities in Texas

Toyoda Gosei Texas, LLC has been established on the TMMTX campus since January 2005.

Our work involves interior, exterior parts (plastics injection molding, painting, and assembly) for Toyota manufacturing.

We constantly strive for improvement, pushing ourselves to challenge the status quo. Our dedication has led to strong partnerships within the industry and the community, more opportunities for our employees, and better vehicles for our society. We know that our business thrives only if our employees, our communities and our customers do.

All employees put the customer first, and work under the slogan of ONE TEAM ONE TG.





Toyota Motor Manufacturing Texas, Inc.

Japanese HQ	Toyota Motor Corporation	Industry Classification	Manufacturing
Website	https://tour.toyota.com/#/texas	Corporate Form in Texas	Subsidiary
Texas Address	1 Lone Star Pass, San Antonio, TX 78264	Email in Texas	melinda.louden@toyota.com
Number of Employees	<Texas> 3,700 <Global> 383,853	Corporate Function in Texas	The U.S. headquarters is located outside of Texas
Year of Establishment	<Texas> 2003 <Japan> 1937	Contact Person in Texas	Melinda Higgins Louden
Annual Sales	<Texas> - <Global> JPY 48,036 Billion	Texas TEL	210-253-4000

Company and Product/Service Overview, Activities in Texas

Toyota broke ground on a manufacturing plant in San Antonio, TX in 2003, building its first truck in 2006. As the plant grew, eventually adding a second shift, employment also grew. Today, TMMTX employs approximately 3,700 team members and total 9,300 people work including suppliers on the 2,000-acre campus.

In 2020, Toyota announced plans for focusing on full-size body-on-frame vehicles. New technology supporting manufacturing advancements added to the facility made it possible to launch the Tundra Hybrid and Sequoia SUV in 2022.

Toyota has invested over \$4.2 billion into the San Antonio plant since its groundbreaking. And the rear axle plant is expected to begin operations in 2026 and employ 400 people add. Toyota Motor Manufacturing, Texas continues to play a key role in education and workforce development in the San Antonio community.





TOYOTETSU TEXAS, INC.

TOYOTETSU TEXAS, INC.

Japanese HQ	TOYODA IRON WORKS CO., LTD.	Industry Classification	Automotive Parts Manufacturing
Website	https://www.tiw.co.jp/	Corporate Form in Texas	Subsidiary
Texas Address	1 Lone Star Pass, Bldg38 San Antonio, TX 78264-3643	Email in Texas	lcantu@ttna.com
Number of Employees	<Texas> 550 <Global> 15,861	Corporate Function in Texas	The U.S. headquarters is located outside of Texas
Year of Establishment	<Texas> 2004 <Japan> 1946	Contact Person in Texas	Leslie Cantu Vice President of Administration
Annual Sales	<Texas> USD 300M <Global> USD 3.5B	Texas TEL	-

Company and Product/Service Overview, Activities in Texas

Toyotetsu Texas (TTTX) was established in 2004 within Toyota’s San Antonio facility as the third Toyotetsu North American base supporting TMMTX. We produce key Zone III components—including RR and FR Floor parts—for the Tundra and Sequoia, marking a first for the Toyotetsu Group. Our operations also include brake pedal and suspension production, supported by advanced automation and a large press machine capable of forming ultra-high-tensile steel.

We maintain our reputation for precision and quality through standardized work rooted in master craftsmanship. Beyond production, TTTX actively partners with local governments and educational institutions to support job creation and student work experience programs, strengthening community ties and our brand presence.

As founding member an executive officer of TEXAS FAME, we help develop a highly skilled workforce and ensure stable employment opportunities for our team members. Looking ahead, TTTX is enhancing production systems to be more adaptable and efficient through expanded automation and a focus on human productivity.

In response to evolving market challenges, we continue to cultivate our Mendoimi culture, emphasizing care, respect, and long-term commitment to our employees and customers while driving continuous improvement and sustainable growth.



El Paso, Laredo, McAllen and the Surrounding Area

El Paso, Laredo, McAllen, Pharr, Vinton

Nippon Express U.S.A., Inc.

Japanese HQ	NIPPON EXPRESS HOLDINGS, INC.	Industry Classification	Transportation and Warehousing
Website	https://www.nipponexpress-holdings.com/en/	Corporate Form in Texas	Branch Office
Texas Address	28E Walter Jones BLVD, El Paso, TX 79906 9001-B Killam Industrial Blvd Laredo, TX 78045 500 Capote Central Ave, Suite 200, Pharr, TX 78577	Email in Texas	hector.neira@nipponexpress.com
Number of Employees	<Texas> 85 <Global> 73,482	Corporate Function in Texas	The U.S. headquarters is located outside of Texas
Year of Establishment	<Texas> 1975 <Japan> 2022	Contact Person in Texas	Hector Neira / General Manager
Annual Sales	<Texas> - <Global> USD 17,777 million (as of December 2024)	Texas TEL	281-987-2300

Company and Product/Service Overview, Activities in Texas

NIPPON EXPRESS USA was established in 1962 as the first overseas subsidiary of Nippon Express. For nearly 60 years, we have provided comprehensive transportation services including Air and Ocean Import/Export, Warehousing, Trucking, and Moving services. Since 1975, we have locations in Laredo, McAllen, and El Paso along the Mexican border, in addition to Dallas, Houston, and San Antonio. We are expanding our business through a network of six locations, the largest number of locations among Japanese logistics companies. Each location has its own warehouse, a total of 683,000 SQF, and provides high-quality logistics services through in-house systems and extensive training. We operate shuttle trucks that connect two major international hubs, DFW and IAH Airports, to various cities in Texas, providing a speedy Air cargo transportation network. In ocean freight forwarding, we provide our own transportation services which cover Port of Houston, West Coast, and East Coast in all directions. Utilizing our network of strengths, we operate daily milk-run trucking services between San Antonio, the center of the Texas automotive industry, and automotive suppliers in various Midwest cities, as well as cross-border trucking services to Mexico. Nippon Express has logistics capabilities to support your business in Texas, the U.S., and globally.





SMC Corporation of America

Japanese HQ	SMC Corporation	Industry Classification	Manufacturing
Website	https://www.smcusa.com/	Corporate Form in Texas	Branch Office
Texas Address	6800 Gateway Blvd E, El Paso, TX 79915	Email in Texas	joishi@smcusa.com
Number of Employees	<Texas> - <Global> -	Corporate Function in Texas	The U.S. headquarters is located outside of Texas
Year of Establishment	<Texas> 1977 <Japan> 1959	Contact Person in Texas	Jumpei Oishi
Annual Sales	<Texas> - <Global> -	Texas TEL	512-621-9363

Company and Product/Service Overview, Activities in Texas

SMC Corporation of America is a part of a global organization that supports our customers in every industrialized country and is the U.S. subsidiary of SMC Corporation based in Japan. Since its establishment, SMC has been a leader in pneumatic technology, providing industry with technology and products to support automation based on the guiding principle of “contributing to automation labor savings in industry.” Over the past 50+ years, SMC's products have become established as a recognized international brand through sales, technical, supply and after sale services in world markets. Sales have grown to achieve a 35% global market share.

Subsidiaries and joint ventures have been setup in a total of 53 countries. Production facilities are located in 30 countries. In addition, a sales network extends throughout 83 countries, with local services in 500 locations. SMC offers technology accumulated through the years, engineers that bring it to life in new products, production capacity which can deliver a variety of products in a short time, and an extensive sales network in the U.S. and throughout the world.

With its goal of ever more advanced automation, and using its many achievements as a base, SMC is developing high quality, highly reliable products to contribute to automation in industry, as well as in familiar areas of everyday life.

SMC is dedicated to deliver first-class business solutions to our customers through superior products and top-notch customer service by creating an environment for our employees where each person is valued, challenged to reach his or her full potential, and contributes to the growth of the company, community and themselves.

In Texas, there are 3 local sales offices.



Vinton Steel LLC

Japanese HQ	KYOEI STEEL LTD.	Industry Classification	Iron and Steel Mills and Ferroalloy Manufacturing
Website	http://vintonsteel.com/	Corporate Form in Texas	Subsidiary
Texas Address	8001 Border Steel Rd, Vinton, Texas 79821	Email in Texas	https://vintonsteel.com/contact.html
Number of Employees	<Texas>380 as of July,2025 <Global> 3,903 as of Mar,2025	Corporate Function in Texas	U.S. headquarters
Year of Establishment	<Texas> 2016 <Japan> 1947	Contact Person in Texas	-
Annual Sales	<Texas> - <Global> JPY322.8 Billion as of March, 2025	Texas TEL	915-816-2000

Company and Product/Service Overview, Activities in Texas

Vinton Steel, LLC is a mini-mill that produces steel with EAF technology and uses ferrous scrap as a primary raw material.

The steel making facility consists of two electric arc furnaces, continuous casting and rolling mill, recycling more than 250,000 tons per year.

Automobiles, major household appliances, industrial scrap and other forms of salvaged steel are converted into new steel products in our plant.

Operations include scrap processing facilities, a steel mill, rolling mill, and a grinding ball mill.

