



ESSENCE OF JAPAN

MASTERY
COLLECTION

TAKUMI NEXT 2024

JETRO (Japan External Trade Organization) launched the project "Takumi Next" to support Japanese craftsman to expand their markets abroad.

This project involves Japanese producers who excel at the art of creation utilizing local resources such as crafts, traditional products, and household goods that will lead the next generation of Japan.

Their products present the highest quality mastery products made in Japan with strong background in traditional techniques and rich cultural context behind the works. Through the lens of these craftsmen, you can glimpse the inner workings of a nation, Japanese history and the industries that drive its economy and its vision for the future.

Category

This catalog does not show all products registered by each company.

To make inquiries or view more products, please contact: DNA-project@jetro.go.jp



Tohoku Iwate

- 001 Mizusawa Castiron Foundry Cooperative
- 002 Morioka Base Inc.

Yamagata

- 003 Chushin Kobo Co., Ltd.
- 004 Colon inc.
- 005 Kibori
- 006 nitorito Co., Ltd.
- 007 One2 Co., Ltd
- 008 Oriori LLC
- 009 sato wood studio
- 010 SHIMADAHAMONO SEISAKUSHO

Fukushima

- 011 TOUKICHIROUGAMA OBORISOMA WAREKILN

Kanto Gunma

- 012 CHIPS Inc.
- 013 Idaseni, LTD.
- 014 kobayashi pottery studio
- 015 KURAMAE Co., Ltd.
- 016 Trust International Co., Ltd.
- 017 Yamamoto Farm Corporation

Tochigi

- 018 FACTORY LIMITED
- 019 metal craft atelier poppo
- 020 TOKO Co., Ltd.
- 021 Wakasama Pottery Studio

Ibaraki

- 022 Ibarakitsubame Co., Ltd.

Saitama

- 023 HAZE
- 024 Marukanou Murata Co., Ltd.
- 025 OHTANI CO., LTD.

Chiba

- 026 FLAME-WORKS

Tokyo

- 027 Anything Co., Ltd.
- 028 AZUMA Co., Ltd.
- 029 Blooming Nakanishi & Company
- 030 Chikyu Greetings Co., Ltd.
- 031 COSMO SHOJI INC.
- 032 Edo kiriko shop Hanashyo. Ltd.
- 033 Ichikudo Printing Co., Ltd.
- 034 INTERZERO CO., LTD.
- 035 Japan Dento Corporation
- 036 KITCHIBE Co., Ltd.
- 037 Masamoto Sohonten Co., Ltd.
- 038 MURAKAMI ART Co., Ltd.

- 039 NIHON LOCK SERVICE CO., LTD.
- 040 Seikado Corporation
- 041 STEPBOX Co., Ltd.
- 042 SUGAI WORLD, Inc.
- 043 TRINUS, Inc.
- 044 Verne Co., Ltd.

Kanagawa

- 045 Artech&Co., Ltd.
- 046 Asahi Kogyo Co., Ltd.
- 047 buoy LLC.
- 048 Floral Kobo Katsura Inc.
- 049 IPPINSHA Co., Ltd.
- 050 KAMEGAWA STONE SHOP
- 051 nanoma design

Chubu

Niigata

- 052 ARTISAN CO., LTD.
- 053 Asanotansu
- 054 JEJ Astage Co., Ltd.
- 055 ke-shiki
- 056 YOSHIKAWA CORPORATION.

Toyama

- 057 Bijutsukibako URATA
- 058 Yamaguchi Kyujo Co., Ltd.

Ishikawa

- 059 AIZAWA Wood Works
- 060 Asada craft of japan were, Inc.
- 061 C-Brain. co., Ltd.
- 062 For on Co., Ltd.
- 063 HAKUICHI, Inc.
- 064 HAKUZA Inc.
- 065 HATA Co., Ltd.
- 066 HIRO Co., Ltd.
- 067 KUTANI BITOUEEN CO., LTD.
- 068 Miyasou Seitoshu
- 069 Notojima glass studio Co., Ltd.
- 070 Shinchi Ringyo Co., Ltd.
- 071 shirasagi mokko
- 072 taniguchi seidosho

Fukui

- 073 Clean-techno Co., Ltd.
- 074 ECHIZEN LAQUREWARE COOPERATIVE
- 075 Hyozaemon
- 076 ISHIKAWA PAPER MILLS, LTD.
- 077 kna plus Corporation
- 078 MATSUKAN.CO.,LTD.
- 079 SOL&TRICK Co., Ltd.
- 080 STYLE OF JAPAN,INC.

Yamanashi

- 081 SANPOH Co., Ltd.
- 082 Shimizu Jewelry Co., Ltd.
- 083 YamakanowashiCo., Ltd.

Nagano

084 MOUNTAIN CRAFT SHA ., LTD.

Gifu

085 3RD CERAMICS
086 Bluelife design
087 FUJITA-TOUKI Co., ltd.
088 FUKUDA HAMONO KOGYO Co., Ltd.
089 furutakasei ltd
090 Ichiyama Co., ltd.
091 KANEWAKA CHINAWARE TRADING
092 KYOUTOUYOGYO Co., Ltd.
093 MASTERS CRAFT CORPORATION
094 Miyama Co., Ltd.
095 NAOE KAWAMURA DESIGN ATELIER
096 Ohashi Ryoki Co., Ltd.
097 SUGIURASEITO CO., LTD.
098 Yamai Pottery Co., Ltd.
099 Yamani Co., Ltd.

Aichi

100 AITO co., ltd.
101 CERAMIC JAPAN CO., LTD.
102 DEBBY Co., Ltd.
103 ELRINA
104 HEIWA KOGYO CO., LTD.
105 HOEI Industry Co., Ltd.
106 Isan Maccha Tea Company
107 Kitamura Japan Inc.
108 Koizumi & Co., Ltd.
109 Matsuura Package Corp.
110 Mikawa Textile Co., Ltd.
111 Nagoya Jushi Industry Co., Ltd.
112 SAIKI LTD.
113 SUNART CO., LTD.
114 Whitemap
115 yamakatu CO., LTD.
116 YAMAKIIKAI Co., Ltd.

Kansai Mie

117 DAIMARU Co., Ltd.
118 Fujisou Seitousho Co., Ltd.
119 mokuichi/marugo
120 MOLATURA Co., Ltd.
121 OKOSHI-KATAGAMI, Inc.
122 Uchiyamaseitosh

Kyoto

123 BIKEN TEXTILE CO., LTD.
124 Daiichi Honpo
125 HINODEYA CO., LTD.
126 HIRAYAMA NICHIOUHINTEN
127 jakkyu
128 Kyoto Inban CO., Ltd.
129 Maruwa Co., Ltd.
130 NINSHU. Co. Ltd.

131 NUTMEG LLC.
132 OKUMURA Planning Office CO., LTD.
133 SUGINOMI CO., LTD.
134 TANIGAWA Co., ltd. (Kyoto Makotoya)
135 Ugenta
136 Yamada seni Co., Ltd.

Osaka

137 Diamond Co., ltd.
138 FUJITA METAL MFG.CO., LTD.
139 FUKUROYA TOWEL & Co., Ltd.
140 HORIUCHI MIRROR INDUSTRY CO., LTD.
141 KANNO ORIMONO CO., LTD.
142 MIYAMOTO CO., LTD.
143 NAKAGAWA Precision Machinery Works Co., Ltd.
144 NOBORU ELECTRIC CO., LTD.
145 PRAIRIEDOG CO., LTD.
146 Sensyo Co., Ltd.
147 Tomekawa Co., Ltd.

Hyogo

148 NAKATA KOGEI CO., LTD.

Nara

149 Akahada-yama Motogama Furuse Gyozo, Ltd.
150 Huukyuu LLC
151 Knitwin Co., Ltd.
152 Kuretake Co., Ltd.
153 Maruyama Fiber Industry Co., Ltd. -Nawrap-
154 SOUKI Inc.
155 TABI ESQUARE Inc.

Wakayama

156 HARADA TEXTILE Co., Ltd.
157 KOZO Co., Ltd.
158 MIYOSHISHIKKI Co., Ltd.
159 TakechiyoCompany,Ltd.

Chugoku

Okayama

160 DAIKURA
161 Hanayuki
162 Marusei Orimono

Hiroshima

163 ATOM Corporation
164 Hiroshima Artist Brush Mfg. Co., Ltd.

Shikoku

Tokushima

165 AOLA LLC
166 FUJI FURNITURE Co.,Ltd.

Ehime

167 MARUEI TOWEL CO., LTD.
168 miyazaki towel Inc.
169 SPC Co., Ltd.

170 Tokiwa Industries, Ltd.
171 WATANABE PILE TEXTILE CO., LTD.

Kochi

172 SOMATAKA

Kyushu

Fukuoka

173 BISQUE Co., Ltd.
174 NORIDOMI IRON WORKS CO., LTD.
175 SHIRAKI CRAFT&ARTS Co., Ltd.
176 SK JAPAN CO., LTD.
177 THREE R CORP.

Saga

178 ARITA PORCEALIN LAB., INC.
179 Daiei Industrial Co., Ltd.
180 FUJIMASA Co., Ltd.
181 GYOKUYU Co., Ltd.
182 Kanezen Kiln Co., Ltd.
183 Kubota Minoru Ceramics Ltd. KUEMON
184 UTSUWA TO DESIGN

Nagasaki

185 HAMATO Co., Ltd.
186 Hirado Kohsyo Danemon Kiln

Kumamoto

187 asobougama

Oita

188 Beppu Tsuge Kogei Co., Ltd.
189 DAITETSU Co., Ltd.
190 Hisatsune Forest Co., Ltd.



001 • Iwate

Mizusawa Castiron Foundry Cooperative

WEB <http://oshu-nambutekki.com>

Instagram [@oshu_nambutekki/reels](https://www.instagram.com/oshu_nambutekki/reels)

Mizusawa Castiron Foundry Cooperative is a cooperative that includes many traditional craftsmen and up-and-coming artists who are active in Oshu City, Iwate Prefecture, the hometown of Nambu Tekki ironware.

Nambu Tekki ironware has long been a beloved tool of daily life in Japan, but it is also an item that adds a touch of style to modern life.

Why not incorporate Nambu Tekki ironware into your daily life?



NambuTekki Ironware Teapot

002 • Iwate

Morioka Base Inc.

WEB <https://haretoke-artbonsai.jp/>

Instagram [@haretoke_artbonsai](https://www.instagram.com/haretoke_artbonsai)



ART BONSAI

003 • Yamagata

Chushin Kobo Co., Ltd.

WEB http://www.chushin-kobo.jp/index_en.html

Instagram [@hisanori_masuda](https://www.instagram.com/hisanori_masuda)



Cast iron Incense holder/Sugoroku

Chushin Kobo is a casting iron workshop we propose items that fit modern lifestyles. There are a number of techniques of Yamagata-casting that create items for tea ceremonies. Taking each of them and combining with modern designs gives birth to this new lifestyle tool. Chushin Kobo was founded in 1997 aiming to produce and distribute the items designed by Hisanori Masuda.

004 • Yamagata

Colon inc.

WEB <https://www.colon-graphic.com>

Instagram -



Toy spinning top

005 • Yamagata

Kibori

WEB <https://ashinokazue.jimdofree.com>

Instagram -

Ashino Kazue is a traditional craftsman for engravings of Yamagata Buddhist alters, a national traditional craft. kibori brooch was created in November 2016 as a product utilizing the carving techniques of Yamagata Buddhist alters. It won an award at the Yamagata Excellent Design 2017 and an honorable mention at the Japan Wood Design Award 2018. In 2020, Ashino Kazue created ukiyo-e brooches in collaboration with "Waraku" magazine published by Shogakukan.



kibori brooch

006 • Yamagata

nitorito Co., Ltd.

WEB <https://nitorito.com>

Instagram @nitorito_nitorito

Yonezawa-ori, which has continued since the Edo period, is close to modern life. Nitorito is a textile brand with such a new style.

The name "nitorito" is a coined word that combines the words knit and weave = "knit to ori to". The brand name evokes images of knitwear and textiles, and we hope that even those who are unfamiliar with textiles will become familiar with it.

Surrounded by majestic mountains, Yonezawa is a place where manufacturing is consistently carried out, from planning to production and dissemination. The abundance of nature and the warmth of the hearts of the people who live there lead to the textile image, and with the help of many hands, the stole made in YONEZAWA is completed.

This time, we have prepared a colorful knit stole that will make your mind and body healthy. Please take a look at the warm and warm texture of knitting wool so that it contains air.



Teddy bearnito-kun

007 • Yamagata

One2 Co., Ltd

WEB <https://www.one2.jp>

Instagram -

We are engaged in the entire process of designing, producing, and merchandising lifestyle tools made of Japanese-produced wood (mainly hardwood from Yamagata Prefecture). We focus on minimizing wood waste when designing our products. We create the entire range of our products, from large tables to tiny chopstick rests, with deep love and great care.



Set of chopsticks made of Japanese wood (long and short)

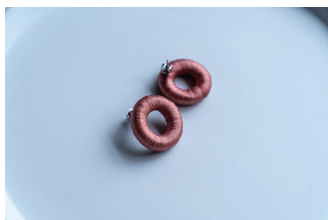
008 • Yamagata

Oriori LLC

WEB <https://ori-ori-japan.com/>

Instagram @ori-ori_japan

Oriori was born in April 2019. Based in the town of Yuza, in the northernmost part of Yamagata Prefecture, young creators gather to make products in collaboration with all kinds of people and things. The name "Oriori" was chosen to reflect the fact our activities started with weaving ("ori"), and that products are born from the combined thoughts of many people coming together. Our products are very sustainable and waste-free. Vintage fabrics that were about to be discarded by traditional Japanese clothing stores and households are rescued, beautifully processed, and made into scarves. In addition, the accessories are made by hand, spinning all the yarns produced during the processing stage without throwing them away. Because the fabric is vintage, it cannot be reproduced, and all items are one-of-a-kind. We would like to continue to create products that make people who pick up Oriori think about the importance of things in their daily lives.



Ori Earrings

009 • Yamagata

sato wood studio



Dry flower base

WEB <https://www.satowoodstudio.com/>

Instagram @sato_wood_studio

I am a woodworker in Yamagata City who creates vessels and objets d'art using a technique called wood turning. I choose the materials I use from logs by myself, and I do everything by myself from sawing, drying, processing to painting.

He has a respect and understanding for wood resources, and aims to reconstruct the value of wood from new perspectives while using local trees and making products that have a low environmental impact.

I use trees that have been watching over the community, such as sacred trees of shrines, or trees that have been cut down due to unavoidable circumstances, to create works that tell the story of the trees. We place importance on utilizing the charm of nature's rich wood materials.

I consider cracks and imperfections as a part of the wood's character, and express the traces of the wood's life in my works. I do not use chemical paints, but oil and lacquer finishes. We are particular about using natural materials to create long-lasting pieces that are gentle to the user.

I value the time axis that wood has, and I make vessels that can be used for a long time, so that the user can enjoy the changes over time as the vessels grow and develop.

010 • Yamagata

SHIMADAHAMONO SEISAKUSHO

WEB -

Instagram -



Yamagata Uchihamono, which inherits the tradition of swordsmithing, has a history of 660 years, and we are a knife manufacturer that sticks to traditional hand-forging and makes each knife by hand.

A lifetime of sharp knives produced by hand forging.

I, Shoku, Jyu (Food, clothing, and home) all come from sharp knives. Blades are one of the indispensable tools for human life.

With our unique forging technology, we will continue to create useful tools that are easy to use and useful in people's daily lives.

Tsuchime Santoku Knife

011 • Fukushima

TOUKICHIROUGAMA OBORI SOMA WARE KILN

WEB <https://www.toukichirougama.com/en/>

Instagram @toukichirougama



innocent blue sake cup (lazuli glaze)

Techniques and Spirit Passed Down Since our Founding in 1760

Tokichiro Kiln is a kiln of Obori Soma ware, a traditional craft in Fukushima Prefecture with a history of over 300 years. Due to the effects of the 2011 Great East Japan Earthquake, we have been reuniting in Iwaki City, Fukushima Prefecture since 2018.

At our kiln, you can experience a variety of pottery, including factory tours, pottery sales, and pottery experiences.

Origin of Tokichiro kiln

Heikichi Kondo (1736-1818), founder of the Kondo family pottery business and sixth son of Edo era hatamono bannerman Noborinosuke Kondo, was trained in Kyo and Raku ware before establishing a business as a Raku ware potter in Edo. In 1777, he was employed by the Aizu Domain as a pottery teacher. He later moved to the Miharu Domain, training dozens of apprentices and leaving behind a legacy of achievements. Tokichiro Kondo (1789-1857), second head of the family, worked with his father Heikichi in Miharu producing fine Raku ware, though after his father's death, he was taken into the service of the Soma Domain in 1819 as a potter in Obori where he set down his roots.

012 • Gunma

CHIPS Inc.

WEB <http://www.chipsjapan.com/e/catalog-download>

Instagram @chips_inc

CHIPS is a company that produces and proposes tableware and household goods that fit into your everyday life.

Because they are things we use every day, they are easy to use, fit into our lives like air, and can make us feel just a little bit richer. I hope to be able to interact with everyone through these things.



C006 CHIPS MUG PREMIUM WHxNV Drop

Idaseni, LTD.



1051 Tate Slub Samue

WEB <https://wasuianjapan.com/>

Instagram @wasuianjapan

Samue are easy to wear traditional Japanese outfits. Idaseni Co., Ltd. is Japan's top professional manufacturer, making the finest quality samue with Japanese craftsmen. We offer our own original brand, Wasuian.

The Characteristics of Idaseni

Variation

*With over 1,000 SKU with just samue, we offer the greatest variation in Japanese samue nation wide.

*We make our products with all Japanese fabrics with the assistance of long standing and traditional fabric producers nation wide, including Ojiya-chijimi (Niigata) which is known for its Ramie, Omi-chijimi (Shiga), Kaihara Denim (Hiroshima), which has the largest share on the domestic denim market, Enshu Orimono (Shizuoka), known for its cotton fabrics, Awa Shijira-ori (Tokushima), and Bushu Aizome (Saitama).

100% Made in Japan/High Quality

kobayashi pottery studio



AKRIN

WEB <https://kobayashi-pottery.studio>

Instagram @kobayashi_pottery_studio

Tableware is a living tool. Daily meals, a relaxing tea time. Tableware is very natural and is close to the daily life of the user. kobayashi pottery studio wishes you to use it with attachment in your daily life, and prays for the smile and happiness of the user. So that we can deliver the warmth that is transmitted because it is handicraft. We carefully make tableware one by one.

KURAMAE Co., Ltd.

WEB <https://kamiutsuwa-kuramae.com/>

Instagram @kamiutsuwa.kuramae

For nearly 30 years, we have been engaged in designing and manufacturing paper container forming dies. In 2009, we jointly developed a paper container forming machine with a machine manufacturer for the purpose of manufacturing and selling original paper containers.

Subsequently, the division was established in 2013 for the purpose of developing original paper containers, and as the only company in Japan that handles both steel and paper, the division has developed a brand of paper containers (thermoformed paper containers) through integrated production from mold design and manufacturing, including planning and development of paper containers.

From April 2022, the company has decided to move forward with independent management for the purpose of further expansion and new development of the business division, and is now manufacturing and selling paper containers to its existing customers. Going forward, the company plans to secure new customers and increase sales, mainly by developing sales channels through SNS and other means.

Cocoon Ball Container

Trust International Co., Ltd.

WEB https://www.instagram.com/kirijum__

Instagram @kirijum__



Blouson

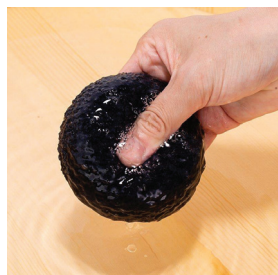
We are a company located in Kiryu City, Gunma Prefecture, a town with over 1000 years of tradition and history.

Sericulture has been famous for a long time, and it is an area called "Kiryu, the city of textiles". The cocoons produced by sericulture and the silk obtained from the cocoons are natural fibers, and the high effects of silk are still popular.

However, the industry is declining with the passage of time. There are various factors such as the mainstream of chemical fibers that can be easily handled and the decrease in producers. In order to continue such a historic industry and to bring Japanese technology to the world, we raise silkworms, produce cocoons, make threads from silk, sew and embroider, and we made a souvenir jacket "kirijum" have a connection with Kiryu City. The Souvenir jacket is the only clothing that is said to have been made by Japanese people, and it is said that it began to be embroidered on the jacket and sold shortly after the war. It features Japanese-style embroidery, which is a traditional and world-class technique called "horizontal embroidery." "Horizontal embroidery" is very valuable and valuable because it requires advanced techniques to embroider without using a computer, and the number of technicians is decreasing as in the sericulture industry.

017 • Gunma

Yamamoto Farm Corporation



Organic Konjac Sponge KOMACHI Charcoal

WEB <https://japankonjac sponge.com/>

Instagram @konjac sponge_japan

Yamamoto Farm is a family-owned business established with the vision of promoting natural and sustainable skincare solutions by utilizing the local konjac root plant produced in Gunma Prefecture, Japan. Our konjac has been eaten as super food and then invented as an extremely natural facial sponge. Over the years, we have been continuously improving the quality of our production system while keeping our traditional manufacturing methods unchanged. What Our Konjac Sponge is cleanses and gently exfoliates the sensitive skin without soap to remove dead skin cells with no excess irritation that is safe to use for baby. Naturally sustainable: made with 100% natural and extremely gentle vegetable fiber packed with minerals & antioxidants that returns to the soil after use and can be reproduced. Earth-friendly: no petroleum-derived ingredients are used in any process from the production to packaging. Non-toxic: 100% free from impurities & pollutants. 100% cruelty-free & vegan-friendly. 100% coloring-free & additive-free.

018 • Tochigi

FACTORY LIMITED



cotton sashiko cybic pants

WEB <https://factstory.jp>

Instagram @factory.official

Concept

[fact is our story]

We are working to make things we find good, rather than things believed good.

Tracing faint clues up to local communities, feeling life there, and touching real things.

Commitment to manufacturing

Making clothes that are convincing with in-house integrated production

Design/Patternmaking/Cutting/Sewing/Knitting/Spinning/Dyeing

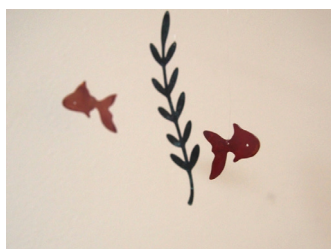
I make clothes using the world's best natural materials such as cotton, linen, and wool, with the motto of "making clothes that tell a story."

We want the wearer to know "things that are truly comfortable to wear," so we go out on our own to find "good things," and through careful examination, trial and error, and repeated successes and failures, we create clothes with all our heart. We are transmitting from the land of Ashikaga.

We handle all processes in-house, from yarn production to clothing design, patterning, sewing, and dyeing. We work hard every day to create clothing that is only possible because of our integrated manufacturing process.

019 • Tochigi

metal craft atelier poppo



Goldfish

WEB <https://poppo-yusuke.jugem.jp/>

Instagram @atelierpoppo

Silent and slow movements attract people.

I look at it a little blankly.

I want to make time to relax in my daily life.

Metal has an image of being heavy, hard, and cold.

Get rid of that image.

We pursue the expression of lightness, softness, and warmth.

The colors of the work are developed using the traditional coloring method of metal crafts.

The red color is a scarlet copper color created by heat processing.

The blue is the patina of copper rust.

The black color is caused by sulfurization in hot springs.

Copper can produce three different colors.

Yellow is brass. The white is a metal called nickel silver.

The colors and air created by metal express the world.

We would like to offer a quiet and peaceful time and space.

020 • Tochigi

TOKO Co., Ltd.

WEB <https://mashiko.com/>

Instagram @tokomashiko



2tone mug

About the "TOKO"

TOKO's Brand Concept

"Searching for true emotional richness."

In Mashiko, the town of pottery, we seek the significance of existence and direction of objects created by human beings, based on the history of Mashiko pottery and the concept of pottery.

About the TOKO

TOKO was established as a pottery gallery in Jonai, Mashiko Town, and celebrated its 50th anniversary in 2024.

Over the years, Toko has held more than 1,000 exhibitions in an effort to create a space that connects the expression of the artists with the customers.

Pottery, which is created by adding the artist's imagination to the natural products of earth, fire, and water, reflects the unique culture of each region, such as climate, climate, and daily life, and conveys various things to us.

We believe that pottery, which expresses the creativity of human artists to the fullest, contains more "things" than other objects.

021 • Tochigi

Wakasama Pottery Studio

WEB <https://wakasama-mashiko.com/>

Instagram @wakasama

Our company is pottery studio of Mashiko-yaki



(kinari) Sinogi Round Cup

022 • Ibaraki

Ibarakitsubame Co., Ltd.

WEB -

Instagram -

Tatami is a traditional handmade from rush grass.

Our tatami sandals come in many colorful and attractive designs that utilize Japanese flowers, patterns and traditional objects.

These sandals are lightweight, and comfortability can be worn both indoors and outdoors. They are ideal as souvenirs or presents.



japanese style tatami sandals with thong1100

023 • Saitama

HAZE

WEB <http://haze.jp/>

Instagram @haze.jp

Japanese traditional candles WAROSOKU. The production of raw materials for Japanese candles and the number of craftsmen are decreasing year by year. Founded as "HAZE" in 2012. Started activities to spread Japanese candles as a modern living tool. Warosoku candles are hand-crafted. Warosoku are made using the ancient Japanese technique of "Tegake-seiho," where wax is applied in sequential layers. The raw materials for WAROSOKU are all derived from plants. The raw material for wax is the oil of the lacquer tree nuts of the family Rhus. The haze fruit is processed by crushing, steaming and then finally squeezing the wax out. Warosoku candle wicks are made with Washi (Japanese paper), Igusa (the same grass used for tatami mats) and cotton. Warosoku wicks are completely hand made. Our Warosoku are made in the ancient Japanese style, with melted wax being layered onto every wick by hand. Every single Warosoku candle at Haze is 100% hand made. The craftsman's hand print can be seen on the layered wax, and the cross section has distinctive ring patterns. When the fire is lit, the wick sucks up the wax so it does not drip. (Warning: In strong wind the candle may favor burning to one side, and this may cause excess wax to drip) There is little soot and no unpleasant smell.



Japanese Candle

024 • Saitama

Marukanou Murata Co., Ltd.

WEB <https://www.marukanou.co.jp>

Instagram -

Founded Hoei5 (since 1807) ago, it has been connected to the 10th generation.

Business has changed with the times.

We will tell you the history that has been connected from Edo to the present with scent.



TEA TIME GREEN TEA incense stick half size

025 • Saitama

OHTANI CO., LTD.

WEB <http://www.wonderfabric.com>

Instagram @wonderfabric_japan



We sell baseball caps using kimono fabrics woven throughout Japan.

Japanese kimono fabrics are very beautiful, and the patterns and designs have meaning.

In order to pass on natural materials and techniques tailored to Japan's climate to the next generation, we sell baseball caps that use kimono fabric and combine it with modern fashion.

JAPAN KIMONO CAP NISHIJINORI CAP

026 • Chiba

FLAME-WORKS

WEB <https://fwjp.base.shop/>

Instagram @flame_works_jp



As a teenager, I had the opportunity to be exposed to science and chemistry burner work, using oxygen burners to process borosilicate glass. Since then, I have taught myself and developed my skills. Now, nearly 30 years later, as one of the foremost experts in three-dimensional modeling using burner work, I manufacture and sell original works and create orders for commercial art. Not bound by ancient techniques, we use our own unique techniques to create glasswork that allows us to create more delicate and realistic forms of animals and plants. We produce a wide range of products, from traditional Japanese and Western motifs to more contemporary creations. We participate in events at local shrines and temples to sell glassware with Japanese motifs.

STAINED GLASS PEN

027 • Tokyo

Anything Co., Ltd.

WEB <https://maekake.myshopify.com/>

Instagram @maekakeanything



It is a home to 10 shuttle looms, which the oldest was made over 100 years ago, continuing to make authentic, high-quality MAEKAKE for the people in Japan and around the world.

ICON Series Lucky Cat

028 • Tokyo

AZUMA Co., Ltd.

WEB <https://www.azuma-web.co.jp/en/>

Instagram @azuma.1818



Since our establishment, we have been supplying mainly metal and western tableware produced in Tsubame City, Niigata Prefecture, to famous department stores nationwide as a manufacturer and wholesaler. In recent years, we have been supplying not only our own OEM products, but also a wide range of high-quality Japanese-made products such as ceramics, glassware, and daily sundries from excellent manufacturers throughout Japan. Just make a request to AZUMA and we will provide you with all kinds of products at wholesale prices. In particular, the top-quality Imperial cutlery and COPPER the cutlery, a pure copper ice cream spoon, are our original flagship products developed to make your meals more enjoyable.

pure copper ice cream spoon and knife

029 • Tokyo

Blooming Nakanishi & Company



HIKKOMI Cat

WEB <https://classics-the-small-luxury.com/en>

Instagram @nokton_official

Blooming Nakanishi is a textile company with a history dating back to 1879.

We started out in the business of importing handkerchiefs from Europe, and even today we are planning and selling handkerchiefs and accessories in major department stores.

Of the several businesses within the company, we are the division involved in hotel linens.

We provide linen products to various lodging facilities throughout Japan, from five-star luxury hotels and carefully selected inns to business hotels and clinics.

Our original brand "Nokton" offers a total coordination of bed linens, towels, and bathrobes. We use carefully selected materials and express traditional Japanese techniques with a modern sensibility. All products are made in Japan.

030 • Tokyo

Chikyu Greetings Co., Ltd.



C300-51 Japanese Greeting card

WEB <https://www.chikyu-brand.co.jp/>

Instagram @chikyugreetings

Our company's Chikyu Brand, was born circa 120 years ago amidst the fantasies of Japanese traditional paintings. The creation of our greeting cards, which are Chikyu's main products, have always revolved around the fulfillment of customer needs and current trends. These goals are at the core of our greeting cards' production, known for their high-end, innovative, and uniquely aesthetic characteristics that carry a "dream". The variety of our company's products, allows it to be of "bridges" between people's hearts and soulful communications. We dispose of "everyday cards" to celebrate the simple little joys of our everyday lives - birthday cards, holiday cards, and even ones with Japanese traditional motifs, destined to an overseas market. In addition to this, we also have specific cards that can be gifted along flower arrangements. Our concept centers itself on "a design that warms hearts, with a hint of dreaminess". We bring forward cards that are accessible to anyone, and forge effort in creating new designs every year, for every changing season. Our proper designs are then brought to life in high-quality Japanese paper factories - allowing them to reach, at last, the hands of our customers nationally and internationally.

031 • Tokyo

COSMO SHOJI INC.

WEB https://cosmoshoji.com/?page_id=289&lang=en

Instagram @cosmoshojiinc



Yuzu Tenmoku 15cm Round Plate

032 • Tokyo

Edo kiriko shop Hanashyo. Ltd.

WEB <https://www.edokiriko.co.jp/>

Instagram -



rice line wine glass

It will be a company that manufactures and sells Edo Kiriko, which has been in business for 70 years. Toyako Summit gift, we are a leading Edo Kiriko company in Japan that produces gifts for guests from various countries. We do not sell outside our own stores, and we have customers both in Japan and overseas due to our unique delicate cut, transparent shine, and design that gives a free impression while using patterns from Edo. The one-of-a-kind items produced by the 2nd and 3rd generation, called premium items, are also popular as art.

033 • Tokyo

Ichikudo Printing Co., Ltd.



PAPER WALLET 02 marble silver (SCREEN FOIL ver.)

WEB <https://ichikudo.com/english>

Instagram -

Our Company which celebrated the 113th anniversary in 2023 has over the years been focused on the global environment, and we have carried out an extensive research work for developing methods to manufacture paper packaging avoiding the use of fossil fuel. Our company is considered a leader in our business field, and we are always looking for new technology and equipment. For example we were one of the first companies to introduce Digital printing technology in order to enable printing of digital drafts sent to us by our overseas customers. Our aim is to continue to utilize the very latest technology, and also to make use of our expertise knowledge that we have built up over the years. Our company will continue to assist our customers in their business, as well as working to make a contribution to our society.

034 • Tokyo

INTERZERO CO., LTD.

WEB <http://www.interzero.co.jp>

Instagram @interzero_clock_watch

company overview

Founded in August 2007, our company is a fabless manufacturer that mainly produces wall clocks, with strengths in planning, design, and mobility, and is a small business with a small number of elite employees (2 employees and 1 director).

Manufacturing is outsourced to a domestic manufacturing factory with high technology. Our high-quality wall clocks and table clocks, made by some of Japan's best craftsmen, including the only one in Japan with woodworking skills, are highly rated by retail stores.

In addition to having business partners (wholesale customers) in Japan and overseas, we also sell online to general consumers on our own e-commerce site.

Advocating "coexistence and co-prosperity" with craftsmen, we deliver Japan's proud craftsmanship to all over Japan and the world.



COURT PENDULUM CLOCK WALNUT

035 • Tokyo

Japan Dento Corporation

WEB

Instagram @wabizo_collection

"wabizo" The Luxury Gift Collection presents the beauty of Japan's finest traditional crafts. It's the perfect gift for that irreplaceable person in your life.



Tea Utensil

036 • Tokyo

KITCHIBE Co., Ltd.

WEB <https://www.kitchibe.com/>

Instagram @kitchibe

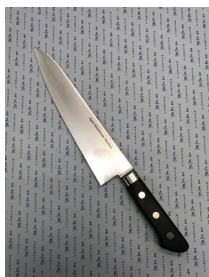
KITCHIBE is a fragrance brand established by Shiono Koryo, a Japanese fragrance ingredients manufacturer founded in 1808. KITCHIBE offers fragrance items such as room diffusers and candles that color your space and daily life, both in Japan and overseas, with unique scents inspired by Japanese seasons, culture, nature, and aesthetics. KITCHIBE is a manufacturer that focuses on "Creating a new style of fragrance," "Japanese sensitivity and creativity," and "Made in Japan." Its fragrances are created by perfumers from Shiono Koryo, a fragrance company with over 200 years of history, and its unique diffusers and candles are designed by world-renowned product designers such as Takumi Shimamura/ Qurz Inc. and Makoto Komatsu. KITCHIBE is a result of the collaborations between many Japanese designers and craftspeople. In a fragrance market that European and American brands take more shares, we continue to challenge every day to be more than just a brand for enjoying fragrance, but a brand that can bring new insights and inspirations to more people by expressing the value, sensitivity, and creativity of Japanese culture to the world through delicate yet comfortable product design and careful manufacturing. Due to the Covid-19 outbreak, the fragrance market is said to be growing as people spend more time at home, and more people are using fragrances to refresh and heal themselves. As one of the home fragrance brand, KITCHIBE keeps move forward to offer a valuable fragrance experience as much as possible.



KAWARA

037 • Tokyo

Masamoto Sohonten Co., Ltd.



Hyper Molybdenum Steel Tsuba Tsuki Gyuto 180mm

WEB <https://www.masamoto-sohonten.co.jp/en/>

Instagram -

Masamoto Sohonten was founded towards the end of the Edo period by Minosuke Matsuzawa, the first generation of Matsuzawa knife craftsmen. The founder devoted his life to developing crafting techniques and producing consistently high quality knives. Over six generations, Masamoto Sohonten has been refining and protecting the founder's integrity.

We believe the tradition of MASAMOTO(R) lives on in every knife, and reaches the hearts of diners through those who prepare cuisine.

Although we live in an age of instant gratification, the desire for well prepared and great-tasting food will always continue.

Delicious cuisine comes from the knowledge and sensibilities of an excellent chef, and an excellent chef chooses excellent tools.

MASAMOTO(R) knives have been cultivated and refined over a long history. Each traditional knife represents a masterpiece of uniform excellence that we hope customers will use for years to come.

038 • Tokyo

MURAKAMI ART Co., Ltd.



TWO TONE CARAFE

WEB <https://www.murakamiart.jp/>

Instagram @amabro__tokyo

Led by artist Shu Murakami, we are developing the design business/AMDR and the product brand/amabro.

He also operates BRICK & MORTAR and Giving Store as retail businesses.

Based on the concept of Art For Daily Life, we propose various ways to incorporate art and design into daily life.

039 • Tokyo

NIHON LOCK SERVICE CO., LTD.

WEB <https://www.lock.co.jp/en/index.html>

Instagram @kime_by_dreamyperson



bottle opener

Nihon Lock Service was founded in 1971 as a maintenance agent of lock and builders hardware, exporting/importing and developing various kinds of products with the philosophy "to prevent crimes and make a safe, secure, convenient/comfortable society". Since 2012, we have exported well-designed products made in Japan to offer comfortable products to the overseas market. From 2012 to 2014, we participated into "Ambiente" in Germany. We have suggested and sold well-designed products from 5 different brands to the US, South Korea, and the UK etc.

040 • Tokyo

Seikado Corporation

WEB <https://seika-dou.com/>

Instagram @seika_do



Edo Kiriko Mt. Fuji sake cup

SEIKADO is a company that sells porcelains made in Japan, especially Kyoto, and boasts a history of 48 years in 2022.

There are many traditional Japanese crafts, but we are convinced that pottery such as Kyoto ware or Kiyomizu ware is one of the world's most proud cultures. We believe that it is our important mission to introduce those excellent traditional porcelains to Japan and the world, and to enrich the dining table and rest time of people all over the world. Our activities, together with the producers of traditional Japanese crafts, contribute to preserving traditions and connecting them to the next generation.

What makes the porcelains sold by SEIKADO different from other ordinary tableware? Nowadays, the world is full of cheap tableware mass-produced by machines. Such tableware can also be used without problems with a function of "serving food" in daily life. However, the difference is obvious when compared to the handmade works created by the refined techniques of skilled potters who have been trained for many years or up-and-coming young potters. Precise painting that you wouldn't think was drawn by a person. Or, it's surprisingly light to hold in your hand and easy to use. The tableware by excellent potters have a unique atmosphere brought about by skill and sense, and the warmth and ingenuity unique to handmade works.

041 • Tokyo

STEPBOX Co., Ltd.



HASAMI Flower pot /Dark Green x white

WEB <https://stepbox.net/>

Instagram @leaf88_garden

We plan and sell plant pots and bonsai pots made of Hasami ware and Mikawachi ware from Nagasaki, Japan. Our products are original and we can do business from small lots. We can also print your logo, change to your original colors, and do OEM. Not only flower pots, but also tableware and other OEM products are available. Please feel free to contact us.

042 • Tokyo

SUGAI WORLD, Inc.



Animal Hug washi tape dispenser

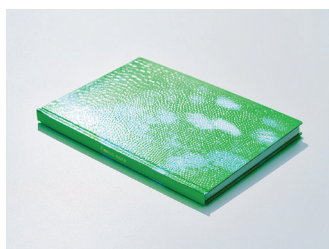
WEB <https://sugaiworld.com/>

Instagram @sugaiworld

We are a Tokyo based company that creates and manufactures "happy design" gifts. Its history began with a fun sticky note called Mustache-it, a mustache-shaped sticky note in 2011. We plan and design all of our products and partner with Japanese manufacturers to help produce them. We are committed to creating unique and playful products for the gift and stationery markets and to manufacturing them from eco-friendly materials. Started with "Clip Family", a new type of animal shaped paper clips released in 2015, our stationery series made of fiber paper, very tough and biodegradable, are now sold at museum shops, lifestyle shops, gift shops, stationery and book stores in 20 countries.

043 • Tokyo

TRINUS, Inc.



flerco note

WEB <https://trinus.co.jp/en/>

Instagram @trinus.jp

TRINUS is an online platform that brings together unique Japanese technologies, creators, and consumers to create things that will amaze you. Creators from all around the world are invited to take part in design competitions based on state-of-the-art materials and technologies on TRINUS.JP. The selected design will be manufactured into a product and distributed to the world.

044 • Tokyo

Verne Co., Ltd.



Tanuki Raccoon Dog Sake Set Made in Japan

WEB <https://en.verne-corp.com/>

Instagram @tikusan_japan

045 • Kanagawa

Artech&Co., Ltd.

WEB <http://www.artechjp.com/>

Instagram @artech.co



Kumiko-KIT (Sakura-S)

046 • Kanagawa

Asahi Kogyo Co., Ltd.

WEB <https://carbon-asahi.jp/>

Instagram @asahi_sumi/?hl=ja



Sumi Toaster

047 • Kanagawa

buoy LLC.

WEB https://www.techno-labo.com/buoy_en/

Instagram @plas_tech



We, Techno-labs, design and produce small quantities of plastic enclosures in our core business so far. Confronting the problems of plastic marine litter, we decided to create a new product that cannot be thrown away and to support this problem somehow. Now we manufacture and sell buoy. Our buoy is a beautiful, one-of-a-kind artifact made from marine plastic waste using a unique process. We buy the marine litter materials from many groups who voluntarily pick the marine litter all around the Japanese coastline. And our buoy label the information of those groups, to draw the attention of consumers about them. Our company is small, but we hope buoy can associate to broad movement to decrease plastic marine litter in our world.

leaf tool tray

048 • Kanagawa

Floral Kobo Katsura Inc.

WEB <https://www.fujigoke.jp/en/>

Instagram @fujigoke_official



In 2011, we started a creation of "Garde", the first water-soluble flower coating agent. Due to the exceeding performance of "Garde", it gained trust and popularity as a classic agents for coating flowers and greens for interior uses. The following year, we succeeded in manufacturing "Frozen flower (freeze-dried flower)". The beauty of "Frozen flower" has thankfully been acknowledged by world-famous European flower artist. In 2015, "Frozen flower" gained popularity in Mason & Objet Paris along with "Garde". And, we applied the freeze dry technology to make the beautiful moss growing at the foot of Mt. Fuji into "FUJIGOKE". Ever since the foundation of our company, we have been exploring the "beauty of nature" and have been expressing our discoveries through flowers and greens. We have brought new culture to the world of processed flowers and plants based on the concept of "more beautiful, long-lasting, safe and easy to enjoy". "FUJIGOKE" is a masterpiece of such discoveries we have made on a journey of exploration on "beauty and nature". The raw beauty of Mt. Fuji-grown moss is frozen as it is, at most beautiful moment. Frozen time and frozen beauty. We hope to deliver the distinct aesthetic of nature in Japanese culture to all customers around the world.

Karesansui kit (S)

049 • Kanagawa

IPPINSHA Co., Ltd.

WEB <http://www.sugarland.co.jp/>

Instagram @ippinsha_310

We will be a company that plans and sells kitchen and leisure products.
We carry a large number of cute and colorful kitchen and leisure products.
We handle Mino-yaki, Hasami-yaki, Seto-yaki, and tableware from many production areas.
We have little track record of overseas sales, and have some experience exporting to Taiwan and China.



Cat's Face PlateS(BK)

050 • Kanagawa

KAMEGAWA STONE SHOP

WEB <https://kamegawa.co.jp/work>

Instagram @kamegawasekizai

Creator: Hiroshi Kamegawa.
The 4th generation owner of Kamegawa Stone Store, which has been in business for 100 years. I am producing with the desire to pursue genuine techniques and pass on a better stone culture to future generations. We sell graves, objects, book stands, flower vases, etc., using the traditional Japanese masonry technique, "Mushiri finish", in which stones are finished by hitting them with a chisel and a hammer. The mission is to "convey the beauty of Mushiri finish to the world".



gorinto

051 • Kanagawa

nanoma design

WEB <https://arroarro.com/en-us>

Instagram @arro_acc

ARRO ARRO: Paradise Embroidered in Jewelry
With the theme of trinkets from an imaginary paradise, this brand of light, three-dimensional, embroidered accessories is inspired by the rich colors and shapes of flora, fauna, and nature.
The three-dimensional, colorful shapes are the result of the flora and fauna of an imaginary paradise in the designer's mind.
The jewelry, expressed mainly in rayon threads and polyester fabrics, has a sense of luxury and originality despite the absence of expensive stones or precious metals.
ARRO ARRO jewelry creates the unique space between art and fashion jewelry.
Each piece embodies an innocent, capricious and elegant spirit.
Experience the paradoxical charm of ARRO ARRO's feather-light embroidered jewelry. While they command a captivating presence, their incredibly lightweight nature ensures you revel in comfort throughout your day.
Perfection, as they say, demands patience. Each design undergoes meticulous ideation, with multiple iterations leading to the final blueprint. These refined designs are digitized and embroidered with precision in Japanese factories.



LAND RING / GREEN

052 • Niigata

ARTISAN CO., LTD.

WEB <https://artisan-web.jp>

Instagram @artisan_official2017

Everyone adores the value that never changes over the time,
while at the same time searching for something new.



Japanese teapot(BLUE)

Asanotansu



trick treasury chest black

WEB <http://www.asanotansu.com>

Instagram ·

We mainly make chests of drawers from paulownia wood produced in Japan. In recent years, we have been focusing on trick vault chests. Drawers that can't be opened easily, drawers that open and close with wooden card keys, and many other amazing tricks. Paulownia wood is fire-resistant, making it ideal for storing valuables.

JEJ Astage Co., Ltd.



SEPARATE BASKET SPB-N25G GREEN

WEB <https://jej-astage.co.jp/en/>

Instagram -

As a business primarily engaged in the creation and design, manufacturing, and assembly of plastic home storage goods, we are committed to engaging in Earth- friendly manufacturing practices that maintain the integrity of the environment and will leave a beautiful planet for future generations.

ke-shiki



stacking tray rectangle size-M “oak tree”

WEB <https://ke-shiki.square.site/>

Instagram @ke_shiki

We self-renovated a vacant house in Kita-ku, Niigata City, Niigata Prefecture, and run a furniture workshop and furniture/craft showroom.

Based on the concept of "creating a view, creating with the view", we combine the view that the user sees with the view that we see ourselves, and we strive to incorporate this into the design of products and furniture that are born from this combination.

We work every day with the hope of creating views that arise from living with beloved objects.

YOSHIKAWA CORPORATION.



Stainless Yukihiro Pan 20cm

WEB <https://www.yoshikawa-group.co.jp/e/kitchen/top/top.htm>

Instagram @yoshikawa_kitchen

Innovate living, for a better lifestyle.

At Yoshikawa's Lifestyle Division, we envision people's lives enriched by "food".

Can cooking become less a chore and more enjoyable? What functions can be added to make serving food effortless while complimenting the overall eating experience? How can a product assist in bringing family closer during meals? These are some of the questions we ask. At Yoshikawa's Lifestyle Division, we strive to make products that make people's relationship with food not only easier but also more meaningful.

Our company is based in the area of Tsubame Sanjo, a region renowned for superior metalworking spanning almost 400 years. With pride deeply rooted in history, Yoshikawa can only aim higher when it comes to quality.

While valuing our own skills and techniques, we also work closely with local industries sharing knowledge and experiences. These collective efforts and cumulative know-how lead us to make constant improvements, making our products safer and higher in standards.

057 • Toyama

Bijutsukibako URATA

WEB <https://www.kibako-urata.com/>

Instagram @kibako_urata



Using only safe and secure domestic paulownia wood, our craftsmen make and sell modern, simple, and well-designed kitchen goods by hand. Although paulownia wood is not so familiar overseas, in Japan it has long been used as a wooden box for storing crafts, works of art, kimonos, and luxury accessories. We have specialized in paulownia wooden boxes since the Edo period (1603-1868), and have been manufacturing and selling paulownia products to suit various people's lifestyles, taking advantage of our advanced technology cultivated over the years. In 2020, we launched our original paulownia brand "KIRIFT" and have gradually expanded our sales channels in Japan, and our online store has also been well received. We are convinced that the beauty of solid paulownia wood, which does not look like kitchen utensils made by hand by craftsmen, is one of the charms of our products. We hope that people overseas, who are not familiar with paulownia, will discover the original performance of paulownia and experience the advantages of paulownia.

Coffee container (Brown Type)

058 • Toyama

Yamaguchi Kyujo Co., Ltd.

WEB <https://en.kyujo-orin.com/>

Instagram @kyujo_orin



YAMAGUCHI KYUJO Co., Ltd. was established in Takaoka City in 1907. Since then, we have been producing various types of oriins, mainly Shinto and Buddhist ritual objects and bronze art objects. The sound of an orin is mysterious. It is somehow warm and gentle, and you feel as if you are protected by something. The Japan Institute of Acoustics reported that the sound of the Kyujo Orin has a "one-fth fluctuation," which increases alpha waves in the brain waves and has a healing effect that makes people feel calm and relaxed. The beautiful sound of the Kyujo Orin has been highly acclaimed and is now used for train departures at Shin Takaoka Station on the Hokuriku Shinkansen Line and five other stations in Takaoka City, as well as for school chimes.

Kotorin plain

059 • Ishikawa

AIZAWA Wood Works

WEB <https://www.aizawa-wood.com/>

Instagram @aizawa_wood



Founded in 1947 in Wajima City, Ishikawa Prefecture, Japan as a woodwork manufacturer for lacquerware, AIZAWA Wood Works specializes in a wide range of processing techniques, including joinery, bentwood work, woodturning, and carving, and is particularly skilled in NC machining, and delivers various wooden tableware with delicate craftsmanship and rustic charm.

RINKA Flower Tray M

060 • Ishikawa

Asada craft of japan were, Inc.

WEB <https://online.asada-shikki.com/>

Instagram @asada_shikki



We propose Yamanaka lacquerware that can be used in everyday life. Everything from the traditional Yamanaka wood turning process to the lacquer coating is done in the Yamanaka workshop. Lacquerware made with domestic wood is lined up in the shop where you can easily enter. The feature is that there are many works that are casual while inheriting the tradition of lacquerware, from the wish that you can use it in real life and enjoy the warmth of wood.

Utsuroi cup silky pink L

061 • Ishikawa

C-Brain. co., Ltd.



HANAMOKKO CLOCK SHINSHA

WEB https://global.cbrain.co.jp/?utm_source=instagram&utm_medium=baner&utm_campaign=taiwan_clock

Instagram @atelier_c_brain

This atelier has been producing wristwatches and clocks by hand for 30 years in Kanazawa.

For the dials, we use traditional materials and techniques such as "iwa-enogu," which is made from natural stone powder and has been used in Japanese painting for 1,400 years, lacquer, and Japanese paper.

The atelier uses traditional materials and techniques such as lacquer and Japanese paper,

We are particular about delicate expressions that can only be made by hand,

We strive to create products that overflow with the joy of cherishing beautiful things that transcend time.

062 • Ishikawa

For on Co., Ltd.



Cotch Kurumi Accessory

WEB <https://foron.co.jp/>

Instagram @cotch_foron

It all began with a walnut tree in the forest. Cotch is a fashion and hair accessories brand born out of walnut trees in the Japanese forest. We carve detailed designs while preserving the wood's gentle expression, and finish the products with astringent persimmon liquid and beeswax. Walnuts sprout in a quiet forest and grow through the changing of the seasons. Humans then put the final touches to them. Each small piece is filled with delightful stories. How a Cotch item is made. For each Cotch item, we use a laser to carve a detailed design on Japanese walnut wood and carefully apply, by hand, natural paints, astringent persimmon liquid and beeswax to each one of them. To enhance the charm of the wood itself, we avoid over-decorating them, but at the same time won't forget the playfulness that makes fashion fun. Modern technology and senses are combined with traditional Japanese materials and techniques to create classic but novel fashion and hair accessories. We have also carefully considered the cute, cheerful packaging.

063 • Ishikawa

HAKUICHI, Inc.



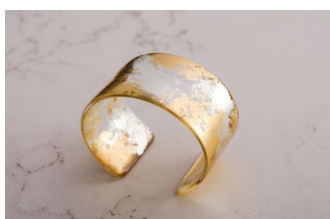
Kutaniyaki cup 'Yoshitaya hai'

WEB <https://www.hakuichi.co.jp/>

Instagram -

064 • Ishikawa

HAKUZA Inc.



layer acrylic bangle LL (towa&sada)

WEB <https://www.hakuza.co.jp/>

Instagram @hakuza_official

Our company was founded in Kanazawa City, Ishikawa Prefecture, in the early Showa period (1926-1989) as Takaoka Kinpaku-ten, a manufacturer and seller of gold leaf. Since then, the company has maintained the traditional "Entsuke Kinpaku" technique and has produced gold leaf used in the restoration of national treasures and important cultural properties such as Chuson-ji Konjikido and Nishi Honganji.

Our mission is to contribute to the preservation of national treasures and important cultural properties through traditional techniques, and at the same time, to connect metal leaf to the future as an entity that is needed by people living today.

The traditional "Entsuke gold leaf" method and the modern "Tachikiri gold leaf" method, which is now the mainstream method.

We possess both of these techniques, and as a manufacturer, we are constantly facing the possibilities of metal leaf and developing foil and processing techniques.

* In December 2020, "Entsuke gold leaf" manufacturing method was registered as a UNESCO Intangible Cultural Heritage under "traditional skills, techniques and knowledge for the conservation and transmission of wooden architecture in Japan".

065 • Ishikawa

HATA Co., Ltd.



SO-HM-01 SOJI hako M natural

WEB <https://www.hatashikki.jp/>

Instagram @hatashikki

Hata Lacquerware Store is involved in the manufacture of "Yamanaka Lacquerware" in Yamanaka Onsen, Kaga City, Ishikawa Prefecture. In 1930, Unomatsu Hata started his own business as a hand-painter of lacquer ware, and together with the second, he founded Hata Lacquerware Store, which deals with all kinds of lacquer ware. Currently, we manufacture and sell not only lacquerware but also wood products that utilize the texture of the wood as it is, and is looking for new possibilities for Yamanaka lacquerware while preserving the tradition of Yamanaka lacquerware that has been passed down from generation to generation.

066 • Ishikawa

HIRO Co., Ltd.



Small Sewing Box Carved Wood Hemp Pattern

WEB <http://www.hiro55.com/>

Instagram @hiro_kanazawa

HIRO Co., Ltd., is a sewing company with over 85 years of experience in Kanazawa, Ishikawa Prefecture, Japan. Mainly deals with women's clothing as well as on the one hand, Hiro collaborates with Kanazawa-based artisans to create contemporary and playful products for daily life drawing on the multiple traditional crafts practiced in Kanazawa, such as Kutani porcelain and Yamanaka lacquerware.

Hiro's work with distinct designs adapting traditional craft techniques nourished in Ishikawa Prefecture are very popular in Japan and highly regarded around the world. They are selected in shops associated with museums and art galleries.

067 • Ishikawa

KUTANI BITOUE CO., LTD.



snowy heron tea cup



WEB <https://kutanibitouen.com/>

Instagram @kutani_bitouen

Kutani ware is manufactured and sold. In addition to Eishu Modern, Kokutani Copy, and Lusanjin Copy, there are also incense-related products, calligraphy and painting supplies, flower pots, kaleidoscopes and other products stored in the Kyukyodo. Being reasonable despite being hand-drawn is a strength. Many of the hand-drawn works are by individual artists. Our company is active in Kutani Bitoen under the name "Eisei", so it is hand-painted, but there are also stores selling it, the quality of the products is high, and the sales function is better than that of individual artists. Individual writers are weak in terms of selling while starting to create, so they add value and make a profit. We have many types of products and many transactions with wholesalers, so we can provide them at reasonable prices. Therefore, we are price competitive overseas and compared to other companies. The website is already available in English and Chinese.

068 • Ishikawa

Miyasou Seitoshō



maneki-neko

WEB <https://miyasou2020.com/works/311/>

Instagram @miyasou2020

Miyaso Ceramics Co., Ltd. is a pottery factory founded in 1914 (Taisho 3), and has been producing ornaments every day for over 100 years.

Our current main products are lucky charms such as beckoning cats and owls.

We also produce seasonal products such as zodiac signs and hina dolls, and in recent years we have been producing a wide variety of materials that meet modern demands, such as materials for character products.

In recent years, we have been experimenting with creating arts and crafts with local artists using old handmade molds made from the Taisho period when we were founded to the early Showa period.

069 • Ishikawa

Notojima glass studio Co., Ltd.

WEB <https://www.notojmaglass.com>

Instagram @notojimaglassstudio



See sake

070 • Ishikawa

Shinchi Ringyo Co., Ltd.

WEB <https://www.hakusan-evergreen.com/>

Instagram @shinchi_ringyo

We operate a forestry business in Hakusan City, Ishikawa Prefecture.
At the foot of Mt. Hakusan, we make products utilizing forest resources.



AROMA de Camp

071 • Ishikawa

shirasagi mokko

WEB <https://www.shirasagi-mk.com/>

Instagram @shirasagimk

We process only natural wood produced in Japan. When dealing with natural materials, the most important thing is to have a good eye for wood. The first step in creating a good product is how to identify the best wood and bid for it at a reasonable price. We process good materials with high technology to produce high quality vessels. We make high quality vessels by processing good materials with high technology.



shirasagi bowl keyaki black

072 • Ishikawa

taniguchi seidosho

WEB <https://taniguchi-seido.com>

Instagram @taniguchi_seidosho



Une series / Spout bowl

073 • Fukui

Clean-techno Co., Ltd.



Japan-made Plush Toy Fluffy-Pal Bear Size-M Color-Milktea

WEB <http://clean-techno.com/index.html>

Instagram -

074 • Fukui

ECHIZEN LAQUIREWARE COOPERATIVE

WEB <https://www.echizen.or.jp>

Instagram @echizen_shikki



YOKA bowl 2-tier set vermilion

Echizen lacquerware is a lacquerware production area with a history and tradition that began 1,500 years ago. Echizen lacquerware is produced not only for ceremonial occasions, but also for daily use, with bowls, plates, chopsticks, spoons, and other daily-use tableware, and today Echizen Lacquerware ships many types of tableware for professional use, which is indispensable in the restaurant industry. In addition to tableware, the company also produces a large number of lacquer-lacquered miscellaneous goods that match modern lifestyles.

075 • Fukui

Hyozaemon



Dishwasher-safe chopsticks, Tsuki no Shizuku Sakura L/M

WEB <https://www.hyozaemon.co.jp/>

Instagram @hyozaemon84

Hyozaemon is a chopstick manufacturer specializing in chopsticks founded in Obama City, Fukui Prefecture in 1920. This year marks the 103rd anniversary of the company's founding. Our motto is "chopsticks are food." The chopstick tips that go into the mouth are coated with natural lacquer, which is harmless even if it should enter the human body. And all products are handmade by craftsmen. Our representative product, Kezuri Chopsticks, is carefully sharpened one by one by our craftsmen, and the subtle unevenness on the surface is so comfortable to use that it is said that once you use it, you will never want to part with it. Kezuri chopsticks "Hashiro," which are processed for portable use, can be said to be a gem that concentrates the essence of Hyozaemon's technology. In recognition of its proven technology, Hyozaemon was selected by the Japanese government as a gift to be presented to the leaders of the G7 major economies at the Hokkaido Toyako Summit and the Ise-Shima Summit held in Japan. We recommend the Kezuri Chopsticks series as products that can be used for a lifetime, as the thinned lacquer can be repainted as many times as needed free of charge. In addition to producing chopsticks with mother-of-pearl inlay, a characteristic of Wakasa-nuri chopsticks, we also produce a number of dishwasher-safe chopsticks, which are sold in stores of famous Japanese department stores.

076 • Fukui

ISHIKAWA PAPER MILLS, LTD.

WEB <http://www.echizenwashi.net>

Instagram -



#wakami_sutenai letter paper set

Engaged in papermaking since the Edo period, and established Ishikawa Paper Co., Ltd. in 1961. Shifting production from hand-made washi to machine-made washi, manufacturing not only traditional washi such as art and craft paper and fusuma paper, but also printing paper and inkjet paper that require multicolor printing such as "The Tale of Genji Emaki". In addition, the developed washi paper with low elasticity has been highly evaluated as a label paper for sake and shochu, such as being used for beer label paper by major beer companies. We are working to realize a sustainable society through the manufacture and sale of Japanese paper, which is our company's business, including the production of recycled Japanese paper.

077 • Fukui

kna plus Corporation



vertical-pleats recycled polyester

WEB <https://knaplus.com/>

Instagram @knaplus

"kna plus Corporation" started from a small textile company in Fukui prefecture, a countryside of Japan where the textile industry is thriving. The location is surrounded by rich nature and the spirit of craftsmanship flourishing in the long history.

Aspired to fabricate products with our weaving technology, we started to produce items since 2007. Then we focused on a fiber returning to soil "polylactic acid" which used to be woven as an industrial material. PLECO pleated bag was born with this fiber adding our local material processing technology.

078 • Fukui

MATSUKAN.CO.,LTD.



NATURAL WOOD

WEB <https://matsukan.com>

Instagram @hashi_kura

MATSUKAN is a chopstick manufacturer that hails from Obama City, Fukui Prefecture, a major production hub known for its Wakasa lacquerware origin.

Since our establishment in 1922, in the northern Shioya area of Obama City, we have proudly celebrated a century of devotion to chopsticks.

079 • Fukui

SOL&TRICK Co., Ltd.



FACE TRICK IRUV1000 Sunglasses

WEB <http://www.sol-trick.com>

Instagram -

Our company is located in Echizen City, adjacent to Sabae City, Fukui Prefecture, the center of eyeglass production in Japan, and is mainly engaged in the planning and sales of sunglasses and reading glasses.

Making the most of our connections with local manufacturers, we have been focusing on functional products in recent years, especially sunglasses and reading glasses with functional lenses, at the most reasonable prices possible.

Our products are sold through a wide variety of channels, and in recent years, our e-commerce sales through our own stores have also been strong, receiving high praise from many of our customers.

080 • Fukui

STYLE OF JAPAN, INC.



OEDO

WEB <https://www.soj-inc.jp/>

Instagram @styleofjapan_inc

Our mission is to replace disposal waribashi chopsticks, which is bad for the environment and leads to deforestation, with eco-friendly and sustainable lacquered chopsticks from around the world.

Our products are born from three brand values: clean, organic, and sustainable.

They offer a new value that combines 400 years of history and traditional technology with modern functionality and design.

STYLE OF JAPAN(SOJ) is a chopsticks brand that creates a new chopsticks production culture while continuing the tradition and history of the 400-year-old chopsticks production in Fukui. Our vision is "HASHI for EARTH". We use environmentally friendly "decarbonized" material for our chopsticks.

In our hometown, there is a beautiful forest of Fukui cedar trees that is regularly thinned for maintenance. This is because if the trees are left as they are, they will not absorb enough CO2 and it prevents healthy tree growth.

SOJ is making sustainable and effective use of the thinned wood with the unique value of "PURE JAPAN MADE".

081 • Yamanashi

SANPOH Co., Ltd.

WEB <http://www.sanpoh-co.jp/>

Instagram -



K18 akoya jewelry

082 • Yamanashi

Shimizu Jewelry Co., Ltd.

WEB <https://shimizu-jewelry.mond.jp/company-eng.html>

Instagram @shimizujewelry



We are a pearl jewelry manufacturer located in the jewelry town of Kofu. In order to maximize the charm of pearls, we look at pearls from various angles every day, and propose and develop pearl jewelry with a new sense of originality and design. We purchase high-quality materials such as pearls and diamonds, propose designs that meet the needs of consumers, and enjoy manufacturing with the reliable techniques that only a jewelry production area can offer. We have dedicated craftsmen who are committed to creating products that will satisfy 100% of our customers. We are confident in our approach to manufacturing, the delicacy of our processes, and the uncompromising attention to detail that goes into every product. Please feel free to contact us for new designs and processing.

Pearl products, production and wholesale

083 • Yamanashi

YamakanowashiCo., Ltd.

WEB <https://yamakano.jp/>

Instagram @yamakano.washi



Miniature Calligraphy Paper Set

084 • Nagano

MOUNTAIN CRAFT SHA., LTD.

WEB <https://www.yama-biko-basket.com/>

Instagram -



We use the skills and ideas we have inherited to disseminate them widely to the world, and carefully receive and utilise the echoing voices of our customers and collaborators. It is like listening to the echoing "Yamabiko". The Japanese people of ancient times created the art of weaving and making mountain grape baskets. This is a brand that inherits traditional culture that has a long history but is being lost, and creates new values that are widely spread around the world. The brand proposes ethical fashion items and lifestyles through manufacturing that creates upcycling based on the principles of learning from the past and sustainability. The brand uses natural materials and knitting techniques to establish a co-existing relationship between humans and nature and to create sustainable products.

yama-biko Classic 3-3-ajiro

085 • Gifu

3RD CERAMICS



FURIN “Wind Chime”

WEB <https://3rd-ceramics.com>

Instagram @3rd_ceramics

3RD CERAMICS is based in Tajimi, Gifu prefecture and has started its activities in 2014. We produce original products based on what we discover and experience in our daily work. What matters most to us is to provide simple products that leave a certain margin to the user. This is for the moment you arrange food on a plate, for the moment you arrange plants and flowers in a vase. It is because we want our products to be finally sublimated that way. We hope we can create our own value and that our products make someone's life just a little richer. We are not a solo artist nor a big manufacturer. We are working while searching for a third way to make ceramics.

086 • Gifu

Bluelife design



soupir

WEB <https://www.suzugama.com/>

Instagram @suzugama

-We rethink the connection between ceramics and people, and create new values for people living in the present. -

We design and produce pottery in Toki City, Gifu Prefecture, Japan.

We explore the possibilities of clay and produce mainly pottery.

Our products are designed for convenience and to fit in with the modern age.

This is because our goal is to enrich people's lives with comfortable vessels.

To achieve this goal, I carefully create one product at a time by gathering opinions and observing the reactions of customers at events and other events.

087 • Gifu

FUJITA-TOUKI Co., Ltd.



Rinka oval plate 20cm Golden crystals

WEB <https://www.08felice.jp/>

Instagram @felice_oribehills

We have been engaged in the ceramics industry since 1948 as a trading company in the Mino Ceramic Ware production area, which has a history of more than 1,400 years. Mino ware boasts the largest production volume of ceramics in Japan, and it is at times used as a traditional craft, as contemporary art, and as daily tableware that fits in with our daily lives, including tableware for business use. While cherishing the traditions of Mino ware, which is rich in technology and diversity, we incorporate new sensibilities and propose a way of tableware that only we can create.

088 • Gifu

FUKUDA HAMONO KOGYO Co., Ltd.

WEB <https://www.fukuda-web.co.jp/>

Instagram @kiseki_products



Cemented Carbide Kitchen Knife KISEKI:(Beech)

FUKUDA HAMONO KOGYO Co., Ltd. is a 127 year old manufacturer of custom-made industrial cutlery. The company manufactures 15,000 types of products annually, including mainly industrial machine knives, precision parts, and jigs. We believe that the company can be revitalized and grow through the efforts of each and every employee. Under employee-led management, we think and act on our own initiative to create new technologies and values. We started developing cooking knives using the technology we have cultivated over the years, and in 2022 we succeeded in developing Japan's first "KISEKI" kitchen knives made of cemented carbide. We aim to provide a richer lifestyle by creating new kitchen knives that are possible only because they are "industrial" rather than made in a way that relies on craftsmen's intuition.

089 • Gifu

furutakasei ltd



Nogakel spoon and fork cotton hydrangea

WEB <https://www.furuta-kasei.com/>

Instagram @nogakel

We have been dedicated to injection molding for 50 years, and from our founding to the present, we have been dedicated to plastic injection molding, and today we continue our daily production activities as a company that is needed by our customers, with many ingenuity and new ideas in response to the changing demands of society. Masu.

At the time of establishment, we manufactured plastic parts for razors, medical equipment, etc. to order from a cutlery manufacturer in Seki City, Gifu Prefecture, and later manufactured car interior parts, important safety parts, and flush-related plastic parts to order.

Currently, we are utilizing these production technologies to advance joint research projects with the Gifu Prefectural Industrial Technology Center.

Developing bolts and nuts using composite materials containing carbon fiber

In 2022, we started developing and selling tableware made from a material that is a mixture of cellulose fiber and resin, delivering sustainable products.

090 • Gifu

Ichiyama Co., Ltd.



Shunka Matcha-wan

WEB <http://www.s-ichiyama.com>

Instagram -

Business tableware and original tableware for stores

We handle a wide variety of tableware from Japanese, Western, and Chinese, and can propose products that meet the needs of our customers.

We have a lot of experience in personalized tableware for stores and original shapes.

Gifts and novelties

We handle a wide range of products for gifts and novelties, from standard mugs to shochu bottles.

We have a large track record in everything from personalized imprinting to original production.

Sake ware

We handle a wide variety of sake containers from sake to makgeolli.

We also focus on the product development of sake cups and have many original sake cups available.

091 • Gifu

KANEWAKA CHINAWARE TRADING

WEB <http://www.ob.aitai.ne.jp/~kanewaka/>

Instagram -



5pc assorted tea cup Heianemaki

Toki City, Gifu Prefecture, is the largest producer of ceramic tableware in Japan. We are a long-established wholesaler that has been in business there for more than 60 years. We are not only a wholesaler, but also a manufacturer of original products with our own ceramics processing facilities. Our original products are characterized by the design of Japanese designs on traditional Japanese pottery that are easy for foreigners to understand. These products are sold at famous sightseeing spots, airports, and duty-free stores in Japan. Our original products have long been extremely popular among foreign tourists visiting Japan and have also been exported.

We are also a trading company. We export mainly Japanese tableware, including general tableware and business tableware, directly to China, the U.S., Vietnam, and other countries.

092 • Gifu

KYOUTOUYOGYO Co., Ltd.



DONABE 205 WHITE

WEB <https://www.ask-kyoutou.co.jp/>

Instagram -

We are a ceramics manufacturer with a history of over 70 years as a manufacturer in Tajimi City, Gifu Prefecture, which is home to Mino ware, one of Japan's leading pottery production areas with a 1300-year history. The most unique feature of this production site is that there is a mountain where the raw material "soil" is mined, and it is an environment that allows research into products that are fundamentally useful for daily life, starting with the basic "soil." We have been engaged in Original Equipment Manufacturing production of western tableware for many years, but with the changing times, we have adopted a wide variety of products in small quantities and multiple materials (earthenware, chemically resistant materials, and recycled clay). We propose products that add color to quality living, such as cooking utensils, tableware, interior decorations, and planting supplies, based on our experience, technology, ideas, time and effort, and design cultivated over many years.

093 • Gifu

MASTERS CRAFT CORPORATION

WEB <https://www.masterscraft.co.jp/>

Instagram @masterscraft_ihoshiro



たい焼き



Our company has two slogans: 1) creating exciting products as much as possible with the least resources, 2) providing a good work environment. We have the largest number of original chopstick holder designs in Japan with over 500 variations, and about 50 types of original pin badges. With the progress of AI, the introduction of IoT, etc., the factory has been further automated and many uniform products are on the market. In our company, however, each piece is hand-crafted by one of our 30 craftsmen to express the delicacy created by "feelings and hands" that can only be made by hand. This allows us to create intricate forms, patterns, and textures that cannot be reproduced by mass production machinery. In addition, as part of our environmentally friendly management, we have installed a solar power generation system.

Chopsticks rest Taiyaki

094 • Gifu

Miyama Co., Ltd.

WEB <http://www.miyama-web.co.jp/en/>

Instagram @miyama.mizunami



Miyama Co., Ltd. is a company founded in 1977 that manufactures porcelain tableware. It is located in Mizunami city, Gifu Prefecture. Since our founding, we have been manufacturing with a commitment to "casting" and "white porcelain".

soy sauce bottle

095 • Gifu

NAOE KAWAMURA DESIGN ATELIER

WEB <https://naoe-kawamura.com/home/en/>

Instagram @naoe07



- Naoe Kawamura, a textile artist, creates artistically hand-dyed scarves and tapestries on silk and other fabrics using traditional Japanese dyeing techniques also used for kimonos.
- The silk scarves are characterized by dynamic gradations of vivid colors and abstract patterns dyed in layers, inspired by the landscapes of nature, sound, and the universe, based on the concept of "colors that create light."
- She has held solo exhibitions in New York and Paris, as well as numerous solo exhibitions at galleries in Japan.
- Exhibiting at Maison & Objet Paris in 2023 and 2024 as "NAOE KAWAMURA" brand.
- Established in 1998.

Luminous Airy Silk Sarves

096 • Gifu

Ohashi Ryoki Co., Ltd.

WEB <http://www.ohashiryoki.com/>

Instagram @masuya.ohashiryoki



Gifu, Ogaki city is the largest producer of Masu wooden box in Japan OHASHI is a manufacture of Masu and has been running business for over 70 years in Ogaki. What is Masu? Masu is originally a measuring cup for rice but nowadays people use it as a sake vessel. Masu has more than 1,200 years history which has been rooted in Japan. OHASHI produces not only original square Masu but also triangle vessel or eco-humidifier while using traditional technique.

MAST Eco humidifier

097 • Gifu

SUGIURASEITO CO., LTD.



2WAY TILE WOOD CLOCK

WEB <https://sugy.jp/>

Instagram @sugy.ceramic.tile

SUGY was born from a tile manufacturer in Tajimi City, Gifu Prefecture.

Ceramic tiles are durable and resistant to fire and water, and are one of the building materials with excellent design, but the fact is that the amount used is decreasing every year.

"I want people who are not familiar with tiles to know how good they are."

With this in mind, we started making ceramic products in the form of Household goods that can be easily incorporated into daily life.

We create products with a focus on the beautiful glaze that is unique to tiles, which we have cultivated over many years of tile manufacturing.

Another feature is that each product has a unique appearance due to handwork and uneven firing in the kiln.

Why not incorporate SUGY's ceramic products into your daily life, where you can easily enjoy the feel of real materials?

*Glaze: the glassy surface of ceramics

098 • Gifu

Yamai Pottery Co., Ltd.

WEB <https://yamaipottery.com/en>

Instagram @yamaipottery



YAMAI

YAMAI Pottery were founded in 1967 in the TOKI city of Gifu Prefecture. Our corporate philosophy is to enrich people's daily lives through pottery by sticking to old-fashioned GABA-casting method, and we strive to produce expressive tableware that cannot be expressed by other companies. We specialize in making complicated shaped Japanese tableware (sake bottles, earthen tea-pots, soy sauce jugs, etc.) by GABA-casting, which is difficult to mechanize. Since casting takes a lot of time and cannot be done in large quantities, there are only a few manufacturers that use this method of production. We are particular about expressing Japan's unique view of the world through a combination of the graceful simplicity of "wabi" and the deterioration of "sabi" over time, which cannot be expressed with porcelain, which is white clay. All products are handmade one by one and can be provided in small lots.

099 • Gifu

Yamani Co., Ltd.

WEB <https://en.yamani-web.com/yamani/>

Instagram @yamani.web.global



Hanafuda mini plate - dog

We are a wholesale company mainly dealing in pottery & Mino-yaki.

Our company founded in 1951 and handles Mino-yaki for a long time.

Currently it mainly exports to Europe, America and Asia.

Handled items are handled widely, including Mino-yaki, other dishes and kitchenware.

We are glad if you can see Japanese attractive dishes and kitchenware.

100 • Aichi

AITO co., ltd.

WEB <https://aito.bz/>

Instagram @aito_seisakusho



Bisque plate WH

101 • Aichi

CERAMIC JAPAN CO., LTD.



HAZARA Long plate green

WEB <https://www.ceramic-japan.co.jp>

Instagram @ceramicjapan

Ceramic Japan was established in 1973 in Seto City, Aichi Prefecture, a historic town of ceramics, and we have been producing many ceramic products by combining a wide range of talented designers and traditional techniques handed down in Seto with a consistent design policy since our establishment. Our products, which are a fusion of reliable technology and modern design, are both practical and artistic, and have won various design awards and are highly evaluated both in Japan and abroad. The New Crinkle Super Bag designed by Makoto Komatsu has been selected for the permanent collection of the Museum of Modern Art (MoMA) in New York. We also cooperate with companies to develop original products (OEM), and strive to express our customers' ideals as much as possible. Recently, we have started an online store in Japan to sell selected original products and appeal to end users so that our products can be better known. We are actively developing original products, constantly exploring the possibilities of ceramic products, and creating new, unique, and well-designed products that will make people's lives better.

102 • Aichi

DEBBY Co., Ltd.



High Gauge_Crew

WEB <https://debby.co.jp>

Instagram @maison_blanche_jp

Make jewelry a part of your existence. ELRINA offers infinite possibilities to create unique combinations that suit the daily lives of everyone who lives their own way. ELRINA does not follow existing values in the process of design and tailoring, but pursues its own sensibility. ELRINA wants to add surprise and joy to your everyday life. ELRINA exists as a new light that supports a positive sense of fashion.

103 • Aichi

ELRINA



ELRINA

WEB <https://elrina.design/>

Instagram @__elrina__

104 • Aichi

HEIWA KOGYO CO., LTD.



Puzzle Bus Rider and Walker

WEB <https://www.tetetoys.com/>

Instagram @heiwa_mocco_insta

"We are a company that manufactures and sells wooden toys. Our head office is located in Nagoya City, Aichi Prefecture, Japan. Our company was founded in 1926. In addition to educational toys for infants, our products range from children to adults. There are a wide variety of games and puzzles that you can play. Our products are mainly sold at department stores and electronics retailers in Japan. In addition to our own brand products, we also manufacture OEM products for major children's clothing brands and publishers, as well as manufacturing teaching materials for education-related companies. Until now, we have only sold our products to the Japanese market. However, starting in 2024, we will be selling some of our products to people overseas.

Products eligible for overseas export include rider, walker, handcars with music boxes, and building blocks.

All of these products are made in Japan and are carefully produced one by one by Japanese craftsmen. They are long-selling products that have continued for over 40 years since their release.

Because this product is highly durable, there are many cases where children are handed over the items that their fathers and mothers used when they were young and let them play with them. The brand name of our products sold overseas is tetetoys. It means hand in Japanese. We want to deliver products that are carefully made one by one by Japanese craftsmen into the hands of children.

105 • Aichi

HOEI Industry Co., Ltd.



Mag milk,white

WEB <https://iiwan.jp/english/>

Instagram @iiwan_official

Recently, the number of fashionable tableware for children has increased. However, some of them are cheap and question "safety". We made tableware that we want our irreplaceable children to use. I thought it would be great if the tableware I used for the first time was safe and would resonate with my child's sensibility. And what moms can use comfortably and comfortably. I will teach and convey various things from eating. We strongly believe that the future of this world will surely become brighter if we take good care of each other and the relationships between our families become stronger and stronger. Material 1. Harmless and gentle on the child's body We use "polylactic acid resin" (PLA), which is made by adding lactic acid to corn starch, and we strictly check the material for harmful substances by a third party. 2. Environmentally friendly with plant-derived materials You can make about 2g of PLA from 5g of industrial corn. An important resource made from plants that grow by absorbing water and carbon dioxide. PLA returns to the earth without producing harmful substances and does not affect the soil or atmosphere. How to make It is manufactured at our own factory in Japan using patented technology with a dedicated machine. No coating is applied to the tableware, and the soft texture without shavings is hand-finished by craftsmen. The government recognized that it manufactures and sells products that can be used repeatedly with PLA resin, and was able to receive the Prime Minister's Award at the 7th Monodzukuri Nippon Grand Award.

106 • Aichi

Isan Maccha Tea Company



WEB -

Instagram @bonjin_official

Exporting a local market to the world.
I would like to introduce these products because of the people who make them.
Only carrying original items planned together with the producers.
Tea cultivation and pottery both require manual work in severe heat and cold.
'It's a lot of work', they say, smiling yet concentrating on what they are doing.
We will carefully wrap and deliver the products made by them.
(We are running two brands (iMaccha and BONJIN). Please check the details on their respective product pages.)
I would be happy if you could feel the passion and the smile of the producer behind each product.
(Japanese Tea)
MATCHA from Nishio City and KABUSECHA from Toyota City, Aichi Pref.
No matter how hard you try, you can only harvest the first tea leaves once a year, and even if you work for 20 years, you can only experience it 20 times.

BONSAI PLANTER with Ridge (KOBICI WHITE)

107 • Aichi

Kitamura Japan Inc.



WEB <https://www.kitamura1923.com/>

Instagram @kitamura_makura

The roots of "KITAMURA MAKURA" can be traced back to the Kitamura Shoten, a cotton cloth business founded by Sadakichi Kitamura in 1923 in Nagoya City. Sadakichi's motto was "Customers First", and he always conducted his business from the standpoint of the customer. Takuya who is the second generation, started manufacturing and selling bedding items as OEM in early 1970's in order to respond the growing domestic demand during the period of rapid economic growth. Sadaaki who is the third generation devoted himself to the development of the new field of comfortable sleep pillows. We have been in business for almost 100 years, and we have experienced many changes over the years. However, the fundamental thing has not changed. That is to support people's good sleep. Nowadays, the demand is growing not only domestically but also overseas. In Europe and the United States, the word "pillow" has a broad meaning and refers to anything like a cushion. In contrast, the Japanese word "pillow" refers only to something used for sleeping, and its construction is highly functional. We are continuing to devote ourselves every day to bringing these Japanese pillows 'MAKURA' to the world. GOOD DESIGN AWARD 2011, 12, 16

KM03J MAKURA pillow Low

108 • Aichi

Koizumi & Co., Ltd.



WEB <https://www.maruyo-koizumi-shoten.com/>

Instagram @koizumi_since_1949

We, KOIZUMI AND CO., LTD have been in business for 70 years, as a leading specialist wholesaler of Tokoname tea pot and tea ware. Through collaboration with local Kyusu craftsmen and tea producers around the world, we have contributed to the tea culture by confidently delivering Kyusu to the world.

chanoma

109 • Aichi

Matsuura Package Corp.

WEB <https://poppy-box.com/>

Instagram @package_now



We are a packaging company specializing in paper products and are committed to environmental responsibility, including the use of FSC certified paper. We are confident that we can meet any of our customers' needs with our constantly innovative technology and high quality. We are always thinking about our customers and embody "always working for the customer." Our original products we would like to introduce this time are our original 3D gift box "Poppy Box" and 3D sticky note "Poppy Pad" that pops out when you open the lid. The world of Poppy Box and Poppy Pad is just like a pop-up picture book. We have a selection of original gift boxes that are ideal as presents for events such as Christmas, birthdays, and Mother's Day. Various customizations are available, including the size and shape of the box. We can also add logos and QR codes to help companies promote their sales and improve the brand value of their products. We would also be happy to be of interest to companies that are thinking of originalizing their products, companies that are considering novelty products for sales promotions that are not available from other companies, companies that are considering PB production for museums, art galleries, zoos, universities, etc., and promoters of sports teams and events.

PoppyBox Christmas S

110 • Aichi

Mikawa Textile Co., Ltd.

WEB <https://peura2021.theshop.jp>

Instagram @peura_kijiten



Reversible bib kit

111 • Aichi

Nagoya Jushi Industry Co., Ltd.

WEB <https://www.nj-utsuwa.jp/>

Instagram @njstyle758



hana

112 • Aichi

SAIKI LTD.

WEB <https://saiki-scissors.com/>

Instagram @saikiscissors.cigar



Our company manufactures scissors for barbers and hair stylists in Ama City, Aichi Prefecture. In order to provide "scissors that consider the customer's hair first", our craftsmen finish each scissors one by one without compromising the sharpness. Our sliding stroke cutting scissors and senning scissors made by our original manufacturing method that does not damage hair are well received not only by barbers and beauticians but also by customers who have their hair cut. We are very happy to be able to offer this scissor to our customers. We are now manufacturing cigar scissors (for cigars), and the sharpness of the finished scissors has received great support from cigar bar owners and cigar lovers.

CIGAR SCISSORS -SEN-

113 • Aichi

SUNART CO., LTD.



black and white cat mugs

WEB <https://www.sunart-seto.co.jp/>

Instagram @sunart712

Our company is a ceramic manufacturer with its headquarters in Seto City, Aichi Prefecture, a city famous for ceramics in Japan. We make cute three-dimensional animal dishes that can be displayed, as well as unique miscellaneous goods, all made from ceramics. We also accept a wide range of requests for original products.

114 • Aichi

Whitemap



WEB <https://slow-toy.com/en>

Instagram @slow_toy_club

I started up a Tokai slow toy club three years ago, with the mission that is creating a SAFE and rich experience for all children. We would like to solve two difficulties. First difficulty is minor & near miss incidents. Next difficulty is parenting in the digital world. It means not only kids using an iPhone outside but also because of Covid19, staying home is a kind of new "lack of real experience". Showing our products makes it much easier to understand our concept. Iwai beeswax crayon is 40% beeswax included. So, licking a crayon is OK. Another one is oiwai agar clay. Agar is a food in JAPAN. so, both can be eatable. Both are safe products, and you can have a rich experience like no other. The concept of all the products is the same, that is slowtoy. This slow means the same as the slow life / slow food is like slow food doesn't provide fast food. And slowtoy is our registered trademark in japan. A mission of our Tokai Slow Toy Club is providing a FUN that bring joy to every children. Providing NEW EXPERIENCE that can be enjoyed as a real experience. And providing a SAFETY that relieve parents from safety concerns.

Oiwai Crayon

115 • Aichi

yamakatu CO., LTD.



WEB <http://yamakatu.co.jp>

Instagram @nakamurashop_1601

We are a company that propagates the Nagoya Kuromontsuki Zome technique, which is designated as a traditional Japanese craft. As of 2022, there are only about 10 companies in Japan involved in this technique. Therefore, we consider it our mission to pass on kimono culture to the future, and we feel that it is necessary to convey the appeal of Japanese kimono culture not only domestically but also overseas in the future. We use traditional Japanese dyeing techniques to make products that match the present day. We will convey the wonderful traditions and culture of Japan. We will continue to take on such challenges.

Black fog

116 • Aichi

YAMAKIIKAI Co., Ltd.



WEB <https://www.yamakiikai.co.jp/>

Instagram -

We are a Tokonameyaki wholesaler founded in 1933. Japan in Japan, we deliver a wide range of products such as department stores and major tea shops. In recent years, overseas demand for Tokonameyaki has increased, and we have just launched our own brand, including overseas strategies. In addition, we also create and sell original products such as Mino ware matcha bowls, which are products produced in neighboring prefectures such as Mino ware. Please contact Tokoname Yamaki Ikai.

BLCK&WHITE

117 • Mie

DAIMARU Co., Ltd.



yomeiri -old japanese furniture-

WEB <https://tsunagu-kozai.com/>

Instagram @tsunagu_kozai

Our company was founded in 1950 in Kuwana City, Mie Prefecture, facing National Route 1, as Daimaru Veneer Shoten Co.

Our predecessor named the company Daimaru, meaning "Let's form a circle with carpenters and work together in union."

In 1951, the company began selling lumber products and built a sawmill in Kuwana City. The company also established a sales office in Tsu City and began doing business with major suppliers to expand its sales channels. Around 1965, the company opened another sales office in Nagoya City, Aichi Prefecture.

Around 1985, pre-cut processing technology was developed and rapidly spread, and by 1998, more than half of all houses were using pre-cut processing technology. The spread of pre-cutting technology led to a decrease in sales, and the sawmill was closed around 2003.

The second generation took over and gradually increased the number of products handled, such as fixtures, flooring materials, nails, and screws, and began to target local carpenters and contractors, handling all kinds of housing materials and even making deliveries on site.

118 • Mie

Fujisou Seitousho Co., Ltd.



Hitoshizuku

WEB -

Instagram -

Originally, FUJISOU did not only make "Kiyusu&Donabe" casserole pots or tea pots. The "HITOSIZUKU&GIN-MINAB" line which was completed after many years of research and did not sell well in the beginning. In those days a lot of labor went into the grounding of the raw materials in a mortar and often the workers were not even spared the time to eat.

119 • Mie

mokuichi/marugo



Chopstick rest

WEB <https://mokuichi.jp/>

Instagram -

Margo Co., Ltd. is a comprehensive timber company that handles shrines and temples, special order materials, and general building materials in Iitaka Town, Mie Prefecture. Craftsmen use a wide variety of domestic hardwoods, centered on high-quality local Ise trees. We make products one by one by hand. We also hold forest eco-tours and focus on environmental conservation in local forests.

120 • Mie

MOLATURA Co., Ltd.



RANGE STAR

WEB <https://shop.molatura.jp/>

Instagram @molatura

We place importance on creating products that will make everyone who comes into contact with them have "feelings" for them.

We create things that are not disposable, but that people will want to keep by their side for many years to come. We want to create things that people will want to keep for many years, not disposable things.

We want to create encounters with objects that bring to mind the feelings of loved ones when they hold them in their hands. The creator, the giver, and the user. The creator, the giver, and the user.

the creator, the giver, and the user. Through our products and "shaving", we hope to be a company that can deliver such feelings.

We hope to be a company that can deliver these thoughts through our products and "shaving".

Moratura's origins lie in Nakamura Seisakusho, a cutting company in Yokkaichi, Mie Prefecture, which processes aerospace parts with a precision of 1/1000 mm. The desire of the company's predecessors was to create society through machining. To achieve this goal, he wanted to "cut everything but air. The Moratura brand was started as a separate business from this attitude of taking on challenges that are not limited to cutting technology alone.

121 • Mie

OKOSHI-KATAGAMI, Inc.

WEB <https://okoshi-katagami.com>

Instagram @okoshikatagami



KATAGAMI design POST CARD

Ise-Katagami refers to carved Katagami (stencils) employed to print patterns on Japanese Kimono fabric. The history is more than a thousand years. The sophisticated skills involved in its production have been established and developed in Ise district (Suzuka City, Mie Prefecture). In the second half of the 19th century, Ise-Katagami designs were introduced to the West, where their design excellence rapidly gained the admiration of artists, and significantly influenced contemporary artistic movements such as Art Nouveau in France, and the Arts and Crafts Movement in Britain. OKOSHI-KATAGAMI, Inc is the long-established manufacturer which foundation for 100 years is met soon. The kind of design with Ise-Katagami pattern takes pride in the total stock of one in the world beyond ten thousand.

122 • Mie

Uchiyamaseitoshō

WEB <https://www.isuzugama.com/>

Instagram -



Water-repellent finished Donabe Casserole, 9.45 inch dia.

123 • Kyoto

BIKEN TEXTILE CO., LTD.

WEB <https://bikenseni.co.jp/>

Instagram @asobigokoro.kyoto



Azuma tote bag aya

A miscellaneous goods brand born from the technology of a dyeing factory. We have been operating a clothing dyeing factory since 1989. In November 2018, we dyed and processed furoshiki cloth designed by various celebrities including former Prime Minister Abe and Takeshi Kitano at the "FUROSHIKI PARIS" exhibition organized by the Tokyo Metropolitan Government. This led us to start the textile goods brand "ASOBI-GOKORO" in 2019. Instead of the traditional auto-screen dyeing process, we use inkjet dyeing, which has a lower environmental impact on the dyeing process. Generally, a large amount of water is used in the dyeing process. For example, auto-screen dyeing uses about 90 tons of water per day. This is because it is necessary for cleaning tools such as belts and dyeing dies. In our inkjet dyeing process, water is used only for washing a small portion of tools. This reduces the amount of water used to about 4 tons per day. (About 95% reduction.) Also, there is no effluent that could lead to pollution of rivers. Our main products are furoshiki and azuma bags. In addition, masks and stoles are also available. They feature colorful colors with motifs of Japanese flowers. Member of Kyoto Print Dyeing Cooperative Association and Kyoto Textile Wholesale Trade Association.

124 • Kyoto

Daiichi Honpo

WEB <https://contribds.net/wp/>

Instagram @kyotocraft.waza



Kyoto Natural Whetstone

We are a retailer using an e-commerce platform. We have been in this business for 5 years. The products we handle are Japanese domestic sundries and natural whetstones.

We have sold general merchandise on Amazon and natural whetstones on eBay for overseas customers. In the future, we would like to increase direct business with overseas buyers.

Counterfeit natural whetstones are available on the Internet, but since we are working with craftsmen on overseas sales, we are able to provide you with genuine products.

In addition, we have never had any payment problems, so you can do business with us with confidence.

Please feel free to contact us.

125 • Kyoto

HINODEYA CO., LTD.

WEB <https://hinodeya-kyoto.com>

Instagram @repair.maintenance

ABOUT HINODEYA

We produce goods that are both useful in daily life and can easily blend in with your room decor.
We produce goods that feel like your favorite antiques and are always fun to look at.
We produce goods that fit in your hand like artisan tools with heartfelt maintenance.
We produce goods that are attractive but not too sweet.
We produce amazing ideas and have a consideration for the future.
HINODEYA products are unique items based on the above enthusiasms.



SHICHI-RIN ROUND

126 • Kyoto

HIRAYAMA NICHIOUHINTEN

WEB <https://hirayama-ten.com>

Instagram @hirayamaten

Hello, our brand name is Hirayama nichiyohinten. "Hirayama" means our family name, and "Nichiyohinten" means "daily necessities store" in Japanese. We use solid wood to manufacture furniture and sundries that can be enjoyed over time. We have to believe that furniture should grow more beautiful and more endearing as it is used, because furniture is a daily necessity that we use every day. We will continue to create furniture that will be loved for a long time through designs that emphasize "form born from function" and careful production using traditional and the latest technology. We hope that the "daily necessities" we create will add color to everyone's life and grow old together.



patol stool

127 • Kyoto

jakkyu

WEB <https://www.shinise.ne.jp/jakkyu/>

Instagram @nakamura_jakkyu

When one thinks of spinning tops, most likely what comes to mind is a round wooden or metal body with a spindle passing through the center. In Japan, they are often a source of enjoyment for family and friends at New Year, and are spun by either hand or string. One major difference between the spinning tops mentioned above and kyo-koma is the material used to make them. Interestingly, kyo-koma are made using pigment-dyed, flat cotton thread, which is then wrapped around a spindle. The flat thread is so thin, in fact, that even knowing it is cotton, with its texture and weight, one could be forgiven for mistaking it as paper.



Kyo-koma different size set

128 • Kyoto

Kyoto Inban CO., Ltd.

WEB <http://www.inban.co.jp/>

Instagram @kyotoinban

It is a long-established seal specialty store that has been in business for 110 years. We will disseminate "stamps", which are Japan culture, to the world.



129 • Kyoto

Maruwa Co., Ltd.



COTTON FUROSHIKI 100cm RABBIT

WEB <https://www.furoshiki-kyoto.com/en.html>

Instagram @kotonowa_kyoto

It shows Japanese minimalism and functionalism in the piece of fabric that allows to wrap anything, from round sake bottles to square boxes, and when not in use, to be folded and stored compactly away. Its uses are only limited by your imagination!

Now Furoshiki is used for fashion, interior decoration, grocery bag, gift wrapping etc. Recently in Japan, it is getting popular to use Furoshiki as an eco-friendly product. Especially we recommend to use it for gift wrapping instead of wrapping paper, grocery bag instead of plastic bag.

The character “包” is used in wrapping something with furoshiki, but the letter originally symbolizes a pregnant woman. In the same way a pregnant mother cares for her baby, so furoshiki implies a care given to the object wrapped inside.

130 • Kyoto

NINSHU. Co. Ltd.



Emerald Sake cup_single

WEB <https://ninshu.com/>

Instagram @ninshu.kyoto

Kyoto-based manufacturer of handcrafted pottery (Omuro-yaki).

The main products are gorgeous cups, plates, bowls, and Incense holder.

There are more than 100 different products, some very Japanese and some very cute.

The company has a deep relationship with Ninna-ji Temple, a World Heritage Site in Kyoto.

The company was granted permission to use the name “Ninshu” and the chrysanthemum crest, as well as the Ninnaji temple official order.

It is the only pottery business that is Purveyor by Ninna-ji Temple.

Ninshu is traditional yet practical, and all products are dishwasher and microwave safe.

131 • Kyoto

NUTMEG LLC.



Picklestone220

WEB <http://nutmeg-llc.com/>

Instagram -

132 • Kyoto

OKUMURA Planning Office CO., LTD.



Stackable Cup

WEB <https://kyoto-okumura.co.jp/en/>

Instagram @fuuu_utsuwa

With the concept of “becoming one with nature in people’s lives,” we aim to create a brand that breathes new life into modern life, society, and the community. We are committed to sustainable manufacturing through our own brand, which refines traditional Kyoyaki and Kiyomizuyaki, and through joint production with other companies. Our products are characterized by simple designs that differ from the traditional craftsmanship of Kyoyaki and Kiyomizuyaki, and we value the warmth of the handcrafting process, which can only be produced by the hands of craftsmen.

133 • Kyoto

SUGINOMI CO., LTD.



Antibacterial Sparkling FaceTowel Fukurou-No-Mori GR

WEB <http://www.suginomi.co.jp>

Instagram @fuzei_kyoto

To catch up with the change of people's lifestyle, we have been releasing hit products (collagen body towel, etc) every year under the concept of "elaborate towel", that have characteristics of "original weaving" "high function" "fine design" that Japanese traditional design and Western tastes are combined in harmony".

134 • Kyoto

TANIGAWA Co., ltd. (Kyoto Makotoya)



Leather model kit-003 A Little Bird

WEB <https://kyoto-makotoya.jp/>

Instagram @tanigawa_inc_kyotomakotoya

Tanigawa Co., Ltd. is a leather professional that has been selling natural leather materials and OEM production in Kyoto since 1975.

We process carefully selected materials with advanced technology to provide products that meet the needs of our customers.

We also launched a brand called Kyoto Makotoya to pursue new possibilities of leather. Kyoto Makotoya's leather model kit is a new type of model kit that combines leather craft and plastic model, and is assembled by sewing with a needle and thread.

You can enjoy the texture and quality of leather while creating your own original work. You can also improve your dexterity and concentration by sewing and assembling. This model kit is sold for those who are interested in leather products and models, or those who are looking for a handmade hobby.

It is a rare leather model kit in Japan, and you can spread the charm of leather. This model kit uses our natural leather materials, and you can create high-quality and durable works. We develop original designs and patterns based on the experience we have cultivated in patterning and planning for fashion brands.

135 • Kyoto

Ugenta



Kurama Reiki Aroma Candle

WEB <https://ugenta.co.jp/wp/kifune>

Instagram @ne_cosmetics_and_gallery

Based in Kurama-kifune Sakyo Kyoto, we manufacture cosmetics using Kifune's water and aroma products using essential oils extracted from Kurama-kifune's plants.

We operate Japanese inn, restaurant, cafe and gallery in Kurama-kifune Sakyo Kyoto, and manufacture and sell cosmetics, aroma products and miscellaneous goods.

136 • Kyoto

Yamada seni Co., Ltd.



70 Hime Musubi Adeline Klam

WEB <https://www.musubi-furoshiki.com/>

Instagram @musubiglobal

We were established as a furoshiki manufacturer in 1937 in Kyoto, Japan.

We have developed furoshiki which have been existed more than 1300years matching modern designs and usages to modern life style.

The brand name is "MUSUBI". We have two directly operated shops in Kyoto and Tokyo.

Overseas apparel companies, galleries, school, cultural/educational institutions, Japanese goods stores, animation goods stores sell our furoshiki and sometimes collaborate with us.

Our products are sold not only as Japanese -traditional- goods but also as a wrapping material, circular fashion item or home decor.

Workshops for sellers or customers are available to spread how to use furoshiki and as a part of cultural interactions.

Your original design will come to life by specialist by each procedure based on the production methods which were succeeded since long time ago.

Also, we accept personalized furoshiki orders which have your logo printed or embroidered on our readymade products.

Diamond Co., Ltd.



glass pen

WEB <https://diamond.gr.jp/>

Instagram -

Since its establishment in 1948, Diamond Co., Ltd. has been a pen manufacturer a general trading company. We handle a wide range of writing instruments, selling handmade made in Japan glass pens, fountain pens from around the world, ballpoint pens, notebooks, and other products both domestically and internationally.

We would like to thank you all for helping us celebrate our 75th anniversary in 2023.

Under the management philosophy of "We provide excitement and satisfaction," we will continue to evolve toward our 100th anniversary by always thinking and acting under the mottoes of "Inspiring Customers," "Satisfying Suppliers," and "Bringing Happiness to Employees. We are convinced that by impressing our customers with our products, our suppliers will be trusted and satisfied with our services, and as a result, our employees will be happy.

FUJITA METAL MFG.CO., LTD.



FRYING PAN JIU M HANDLE SET BEECH

WEB <http://www.fujita-kinzoku.jp/english/>

Instagram @fujita_kinzoku

Fujita Metal was established in Osaka Prefecture, Yao City in 1951. We are producing fry pans, and other metal products such as pots, kettles, cups, etc. Because those products are used everyday, we want to provide you not only with products which are convenient, but which will also make your everyday life pleasant by incorporating the skills and creativity of our artisans to the maximum.

FUKUROYA TOWEL & Co., Ltd.



SHIZUKU Vegetable-dyed Towel Handkerchief

WEB <https://fukuroya-towel.com/>

Instagram @fukuroyatowel

Fukuroya Towel was founded in 1926 in Izumisano City in the Senshu area of southern Osaka - the birthplace of towel manufacturing in Japan - boasting a 130-year history in the industry. Although a relatively small-scale factory, we are able to leverage our technical expertise with over a century of experience to consistently create unique towel designs that always reflect the spirit of the times.

Guided by a legacy of world-renowned techniques and know-how inherited from our predecessors, we actively seek out the challenge of new endeavors, continuously pushing the bounds of our originality.

Embracing Ethical Craftsmanship, Building Bonds with Creators

Through close collaboration with local artisans across a wide variety of trades, we create naturally dyed towels with a 'no waste' philosophy, using vegetables and leftover organic resources from the production of other products that would otherwise be discarded to use as source materials in our process.

HORIUCHI MIRROR INDUSTRY CO., LTD.

WEB <http://www.cr-horiuchi.co.jp/english/index.html>

Instagram @horiuchimirror



FOLDING MIRROR

HORIUCHI MIRROR is a special mirror patented in Japan and reflects your real appearance owing to its structure: a combination of highly transparent glass containing minimum iron to minimize color dullness and a reflection metal layer of high color reproducibility. Clearly reflected skin color teaches the best foundation color to users and enables greatly improved makeup. Thus, HORIUCHI MIRROR is accepted not only by consumers but also by professionals in the beauty industry. HORIUCHI MIRROR: Vision At HORIUCHI MIRROR, with our vision of "Providing the Correct Tools to People for Attending to Personal Appearances", we use patented technology to develop, manufacture, and sell mirror products for people of all genders and age. In order to not just reflect beauty in our mirrors, but allow people to express their ultimate beauty when using our products, we continue to research and refine our techniques in the details and manufacturing process. Mirrors are tools to get an objective view of our own appearances. Before you do any styling, we want you to reconsider the mirror that you are using. We hope that HORIUCHI MIRROR products will help you discover a new and more beautiful you.

KANNO ORIMONO CO., LTD.

WEB <https://www.kanno-tenugui.com/>

Instagram -



CYUSEN TENUGUI Japanese traditional design

The Japanese tenugui has a very long history: it has been used for around 600 years. In the Edo Period under the reign of the Tokugawa shogunate (1603-1867), Kabuki theatrical actors, who were showbiz stars in those days, added traditional Japanese This triggered the rapid spread among the common people of the tenugui hand towels and yukatas (casual kimono-like garments worn in summer) dyed with the patterns used by popular Kabuki actors. Ever since its establishment more than a century ago, KANNO ORIMONO has been dealing in tenugui. In Japan, tenugui are very popular as souvenir items that attract the attention of overseas tourists. It is believed that they appreciate the exquisite Japanese-style coloring and the unique image of Japan created by the patterns. Ready-made tenugui are perfect souvenir items also because they are reasonably priced. They currently sell the products to overseas customers through their online shop, but they aim to cultivate new sales channels in cooperation with potential partners. Ever since its establishment more than a century ago, KANNO ORIMONO has been dealing in kendo tenugui.

MIYAMOTO CO., LTD.

WEB

Instagram @jikan_style



Machimusume No Handkerchief

My name is Yoshitaka Miyamoto, the representative of Miyamoto Co., Ltd., which has offices in Osaka and Tokyo. We celebrated our 65th year in December 2021. We mainly handle "Japanese towels", which are traditional Japanese crafts, and develop "Made in Japan" products such as furoshiki, handkerchiefs and towels as our own brand. We also have a directly managed store called "JIKAN STYLE", which specializes in hand towels, and while sticking to traditional Japanese crafts such as brand concept, materials, dyeing methods, and designs, we manufacture products that match modern life, customs, and feelings. I am. The main brands are "Jikan", "kenema", and "kenema +", and Japanese towels are dyed using traditional Japanese techniques called injection dyeing. I'm making it. We believe that it is our mission to pass on tangible and intangible Japanese culture, spirit, wisdom, and technology not only to Japan but also to the world and to the future through dyed hand towels. We would be extremely happy if we could deliver "the heart of Japan, the fun and excitement" to many people together with us.

NAKAGAWA Precision Machinery Works Co., Ltd.

WEB <https://www.nakagawa-thin-walled-lathe.com/>

Instagram @shitatari_harebi



Aiming to improve the image of metal processing engineers for the future :

Founded in 1917, our company specializes in precision lathe and thin-wall lathe processing. Since our founding, we have devoted ourselves to lathe technology for cutting round objects for over 100 years. We would like to support "JAPAN, a country built on manufacturing" from Osaka, by providing high-quality and high-value-added products through craftsmanship with sincerity.

Taking the opportunity of the 100th anniversary of our founding, we are working to revitalize Osaka, Japan under the corporate message of "Let's inherit the reliable technology told by our senior associates and create the future with innovation" for the next 100 years. We would like to become a company that represents Japan's quality, contribute to society, and embody the shape of a "manufacturing company of the future" that delivers happiness to people around the world.

shitatari:PRODUCED BY HAREBI

NOBORU ELECTRIC CO., LTD.

WEB <https://noborudenki.com/>

Instagram @noborudenki_products



Unpowered Speaker for Smartphone

NOBORU ELECTRIC CO., LTD. is a manufacturer of public address equipment established in 1945. We consistently handle the design and development, production, sales, and after-sales service of public address equipment such as speakers, megaphones and amplifiers.

Some of our products are supplied as OEM (original equipment manufacturer) to ship manufacturers and telephone companies, but more than 95% are sold under our own "Noboru" brand.

In particular, we have a large share of the public address system for steel and chemical plants, speakers used for emergency broadcasts, electronic whistles for ships, and waterproof megaphones.

Speakers account for 48% of the product mix, followed by amplifiers at 19% and megaphones at 15%.

In the electrical equipment market, which is also the market for major companies, we have responded to customer needs through differentiated and distinctive products.

145 • Osaka

PRAIRIEDOG CO., LTD.



SILVER THREAD KITCHEN CLOTH

WEB <https://www.prairiedog.com/>

Instagram @prairiedog_web

We have various line of products, and can supply them to you very flexibly.

146 • Osaka

Sensyo Co., Ltd.



Pure Titanium Straw Kinkou

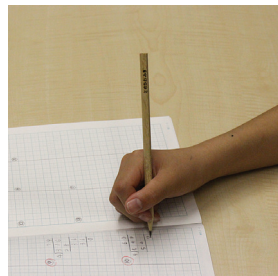
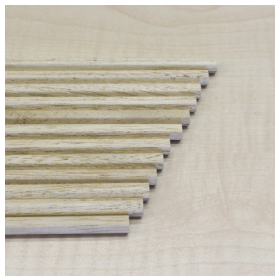
WEB <http://sensyo-global.com/>

Instagram @sensyomekki

Sensyo is a Metal Surface Finishing company that supports our daily lives. Sensyo's business model is the metal plating processing of interior parts of automobiles and metal parts for electric, oil, and gas infrastructure facilities over the globe. In today's world, where sustainability has become the mainstream, we aim to contribute to the goals of the SDGs. To do that, we make fashionable products that are reusable rather than disposable. Pure Titanium Straws are colorful straws created with this in mind. Pure titanium used for titanium straws is an environmentally and people-friendly material. It does not cause allergies and does not have a distinctive metallic taste, allowing you to enjoy the original flavor of the drink. Lightweight, strong, and rust-free, titanium makes a durable and reusable straw. In terms of function, the low thermal conductivity of titanium makes drinks feel colder than they are. The straw can also be used as a small spoon or muddler, allowing you to mix your favorite beverage with the straw and then drink it straight from the glass. The color of the surface is anodized, resulting in a natural coloring drawn from the titanium. Therefore, the color will not fade away or deteriorate. This time we are offering four straws from the Japanese Color collection. These straws feature a matte finish, an elegant Japanese color palette inspired by nature. We hope that they will raise awareness of environmental issues. We want to take this opportunity to develop sales channels both domestically and internationally. Your consideration is appreciated.

147 • Osaka

Tomekawa Co., Ltd.



1 dozen paulownia pencils (12 pieces)

WEB <https://www.tomekawa.com/index.html>

Instagram -

It is a paulownia tansu manufacturer founded in 1912. We have a history of more than 100 years and processing technology knowing the characteristics of paulownia. About the characteristics of paulownia and the skills of craftsmen. The characteristics of paulownia wood include humidity control and deodorization effect. The craftsman's technology has an insect repellent effect because it makes products with high airtightness. When paulownia becomes a fiber, it has water absorption, humidity control, antibacterial effect, deodorizing effect. In recent years, we have been developing new products for paulownia and materials for paulownia. As an example of product development, it is a rice bottle that is highly airtight and can easily total a total amount made by traditional craftsmen. <https://www.rakuten.ne.jp/gold/syokunin-soul/ma-naita/manaita.html#keiryoubreadbox> [https://item.rakuten.co.jp/syokunin-soul/10001361/\[Kiriwashi\]](https://item.rakuten.co.jp/syokunin-soul/10001361/[Kiriwashi]) that was made by powdering paulownia and putting it in when making Washi. There is [paulownia thread] made by slitting and twisting the paulownia washi paper. <https://www.youtube.com/watch?v=Wszqk4y539U&t=4s> <https://www.youtube.com/watch?v=88nvWmcud0>. We would like to sell paulownia's new products overseas.

148 • Hyogo

NAKATA KOGEI CO., LTD.



Men's suit hanger/AUT-05

WEB <https://nakatahanger.com/en/>

Instagram @nakata_hanger/?__coig_restricted=1

NAKATA KOGEI Co., Ltd. is the only maker specializing in wooden hangers in Japan that has continued to meet the extremely high demands of Japanese apparel companies in the constantly changing and growing fashion culture since the company's foundation in 1946. NAKATA HANGER is a wooden hanger made in Japan that NAKATA KOGEI has carefully re-examined the hanger from the user's point of view and made the best use of the skills, knowledge, and experiences accumulated over many years. Each hanger is made by craftsmen, and the hanger has a sophisticated design and a function to keep clothes in good shape. Our hangers have a universality that does not change over time.

NAKATA HANGER is also widely used as a gift. It is popular as a gift for someone important to you, as a wedding gift, and as a graduation souvenir. We have a concept of "Hanging clothes is happiness". (The words "clothes" and "happiness" are a pun in Japanese.) The craftsmen handcraft each hanger one by one with the hope that the giver and the user will be happy. We continue to pursue the potential of hangers and propose a lifestyle through wooden hangers.

Akahada-yama Motogama Furuse Gyozo, Ltd.

[WEB](#)
[Instagram](#)


Akahada-pottery, Akahadayama-Motogama, single drink set.

Akahada-yaki is probably the most famous traditional folk art in Nara City.

The whole Akahada area has a large deposit of good quality clay which contains a considerable amount of Red Iron Oxide. gAkahada-yama h literally means gmountain of red clay showing on the surface of a hill h. According to ancient texts, the red hillside of Akahada-yama could be seen from The Heijo, which was the capital of Japan around 1300 years ago. Several ceramic utensils from the ruins of former Imperial Heijokyu (Heijo Palace) were an exact match to ones that were found in the Akahada area.

The 8th generation Gyozo Furuse has made pottery and manages the kiln on the original site for decades. The simplicity of form complemented with a highly traditional rice straw ash glaze and firing in traditional Noborigama (wood climbing kiln). The result in pieces have themselves a timeless, subtle and uniquely indefinable beauty enjoyed and admired by those fortunate enough to experience them. Gyozo Furuse's masterpieces are not considered so through showiness, but rather follow the philosophy of Wabi Sabi, having made everyday wares with the utmost of care, such as the subtle beauty and calm

surrounding his tea ceremony installments. Currently, the 8th generation Furuse ceramicist is carrying out the family traditions and preceding generations at work.

Huukyou LLC

[WEB https://huukyou.com/en](https://huukyou.com/en)
[Instagram @ten.candle/?hl=en](#)


Scented candle wood wick Hinoki essential oil 160g

Based on the concept "Enjoy the Japanese aesthetic sense", we create home craft product.

Knitwin Co., Ltd.

[WEB https://11-11.jp/en/](https://11-11.jp/en/)
[Instagram @nishiguchikutsushita](#)


SILK COTTON LONG HOSE

"making your day extraordinary"

NISHIGUCHI KUTSUSHITA is a Japanese sock company established in 1950.

We are dedicated to creating products that provide incomparable value to our customers. Under our concept "making your day extraordinary"

We are meticulous about selecting only the finest quality of natural materials, sophisticated designs, and knitting patterns all within a reasonable price setting.

We take pride in our long-established history that is the foundation in crafting our high-quality and timeless products.

Kuretake Co., Ltd.

[WEB https://www.kuretakezig.us/](https://www.kuretakezig.us/)
[Instagram @kuretakejapan](#)


057 DARK YELLOW	205 DARK BLOSSOM PINK	305 SMOKY TEAL
306 DARK AGATE	403 GREEN GRAY	808 PLUM GRAY

ZIG CLEAN COLOR Real Brush 6 colors set "Smoky Colors"

Kuretake was founded in 1902 and will celebrate the 120th anniversary in 2022. Starting from the manufacture of solid sumi ink, which is a traditional industry in Nara Prefecture, we have a wide range of product lineups such as liquid ink, Japanese calligraphy tools, brush pens, color markers, watercolor tools, solid paint, etc., as an "art & craft company". We are launching a number of products that convey the goodness of handwriting and handmade products to the market. Overseas, we develop products under the "ZIG" brand name and have dealt with more than 80 countries in total. In addition to stationery and painting materials, we are expanding our horizons to the fields of industrial use and cosmetics development. For industrial use, we propose pen-shaped containers and use them for coating various solvents in the production process. In cosmetics development, we are involved in the production of eyeliner by applying the know-how of brush pen development. In February 2022, we plan to release an eyeliner under our brand.

Maruyama Fiber Industry Co., Ltd. -Nawrap-

WEB <https://www.maruyama-seni.co.jp/en/>

Instagram @nawrap



Nawrap(R) is our own brand that plans, manufactures, and sells lifestyle products that incorporate the sensibilities of the new era while inheriting the traditions of Nara mosquito nets. We propose lifestyle enriching products based on the concepts of natural, high quality, and design. Especially overseas, we offer functional fibers such as binchotan and persimmon tannin.

Fitness Towel - Natural; Charcoal-infused

SOUKI Inc.

WEB <https://en.souki-knit.jp/>

Instagram @souki.factory



We were founded in 1927 in Koryo Town, Nara Prefecture, which is a famous area for socks production. We have been sticking to our passion for "the socks not just having good quality but also making users feel really good." Cherishing the inherited technology, we courteously produce each product from the selection of materials to the finishing.

JAZZ MIX Ribbed Crew Socks

TABI ESQUARE Inc.

WEB <http://www.tabisquare.jp/english/>

Instagram -

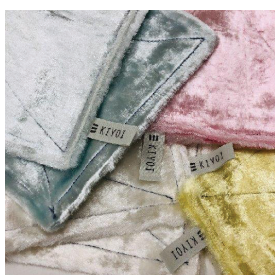


tabi socks

HARADA TEXTILE Co., Ltd.

WEB <http://harada-orimono.co.jp/en/>

Instagram @kiyoi_made_in_japan



Our business: Design/ production/sale of textile fabrics Body towels, peeling towels, dish clothes, special clothes for oven cleaning, microfiber clothes, towel-like handkerchiefs, absorbent gauze handkerchiefs, shawls, hand towels, baby items, professional items and wastes. Integrated processing from designing to touch-up, thus we realize one-stop processing with consistent and meticulous care. We strive for maintaining 'Made in Japan' quality by one-stop processing at our owned factory. We don't compromise on quality and functionality and, in order to offer cost-effective products, maintain efficient facilities and system. We are proudly assure you with the quality of our products by experienced experts, which are something beyond machine-made.

BOA RANGE CLOTH for OILY PINK

157 • Wakayama

KOZO Co., Ltd.



Body Brush with Long Japanese Cypress Handle (BATHING) (w100 x d400 x h55mm)

WEB <https://takadatawashi.com/>

Instagram @takadatawashi

Tawashi are traditional brushes made from the fibers of the windmill palm. For centuries such brushes have been used in Japan for cleaning pots and dishes. For some seventy years, Takada's artisans have been handcrafting tawashi one at a time, using only the finest, carefully-selected materials harvested from trees cultivated in Wakayama Prefecture, in southwestern Japan. Despite appearances, our brushes are in fact astonishingly soft, making them as suitable for bathing as they are for scrubbing fruits and vegetables, imparting a gentle, pleasing and invigorating sensation to your skin. But don't take our word for it—pick one up and experience for yourself the quality that lends the everyday something a bit extraordinary.

158 • Wakayama

MIYOSHISHIKKI Co., Ltd.



WEB <https://miyoshishikki.co.jp/>

Instagram @miyoshishikki

Our company has been involved in lacquerware for many generations. We have been in business since 1904, changing our business format depending on the times. Currently, we have become a leading company selling lacquerware through e-commerce. We value good relationships with local lacquerware manufacturers with whom we have long-standing relationships, and now handle over 4,000 items. I would like to contribute to traditional crafts and local communities that are in decline.

Butter case

159 • Wakayama

TakechiyoCompany,Ltd.



WEB <https://take-chiyo.jp/>

Instagram -

Through the sale of bamboo lanterns, bamboo materials, and lumber, Takechiyo Co., Ltd. will work to discover human resources throughout Japan who will put down roots in their local communities and lead the future, and to make bamboo lanterns a "light of hope" for the region so that one day all of Japan will be connected like a bamboo forest connected by the same roots, and many aspiring thoughts and dreams will sprout in a flexible, strong, and robust manner throughout Japan.

bamboo chopsticks

160 • Okayama

DAIKURA



WEB <http://www.dai-kura.com/en>

Instagram -

Bizen Ware is one of the most traditional pottery in Japan. Those are all handmade that is produced only by experienced craftsman and 'yakishime' technique- pottery fired at a high temperature without using the glaze. Not water leakage without using a glaze by the 'yakishime' technique to continue in more than 1,000 years. Taking the advantage of that 'Yakishime' technique and natural texture of special Cray - needless to say, it's native to Japan- Water preserving qualities allow flowers to last longer in Bizen ware, beer attains a wonderfully full head in Bizen cups, and the quiet atmosphere and subdued colors perfectly complement brightly colored flowers and food enticing the user to create a harmonious arrangement. DAIKURA, with tradition & techniques passed down, we continue our challenges as a manufacturer of Japanese traditional pottery, by focusing on the theme of "Bizen Ware - to enrich our daily lives." We have many items, flower vases, tea utensils, ornaments, tableware and others. By all means, please try that and feel the ancient Japanese wisdom.

hiiro red

Hanayuki



HAPPO CHABAKO

WEB <https://8-chabako.com/>

Instagram @8chabako

In order to preserve Japanese traditional crafts, we are a company that arranges and provides them to suit the current times.

Our affiliated company is a wooden house company using Japanese wood.

*I want to make use of the large amount of domestic cypress and cedar scraps that are produced when building houses, and are destined to be thrown away.

*We value the skills of elderly carpenters and want to pass them on to the next generation.

I want you to work for as long as possible

*Working together with Japanese culture and traditional craftsmen, we create good products that we want to leave behind for our future children.

We develop products with this in mind.

Marusei Orimono



eN. Kurashiki Ribbon Pouch

WEB <https://www.kurashikiribbon-jp.com/home>

Instagram @kurashikiribbon

Marusei Orimono started the business in Kojima, Kurashiki as a Tatami tape manufacture in 1959. We have been handing down its weaving technologies over generations. eN. is brand name for our product line including bags, wallets and dining / interior accessories made of high quality jacquard fabric, Kurashiki Ribbon. The Kanji character, " 縁 " has different meanings by pronunciation: "EN" means "destined relationship" and "FUCHI" means "elaborate edge". eN. series reflect our corporate value on connecting relationships with Kurashiki Ribbons. We are very flexible, and we can supply from a small lot. We hope you will be interested in us and our products.

ATOM Corporation



Chibi Rappo

WEB <https://www.atomgloves.com/>

Instagram @pokeboo_boots

Established in 1942, ATOM have been engaged in the manufacture of working gloves and rice planting boots constructed from natural rubber materials sourced in Japan and Thailand. Pokeboo boots are produced with the same manufacturing technology we have been using for over 60 years for our rice planting boots. Creating an ultra-lightweight pair of boots that can be used outdoors and worn as rain gear drawing on our experience. We won the good design award in 2018.

Hiroshima Artist Brush Mfg. Co., Ltd.



kimeri makeup brushes series

WEB <https://www.artbrush-hiroshima.com/en/>

Instagram @hiroshima_artist_brush

Mr. Yasubei Shiromoto started fude-making in Kumano Town in 1869. Mr. Joichi Shiromoto I received the license from Hiroshima Prefecture first in Kumano Town in January 1881, and we officially started brush manufacturing business. We built a small Temple dedicated to the Kannon, who protects people in the town, on the premises of the company in 1870. We promise and respect prosperity of Kumano Town and the company. After the World War II, the calligraphy was prohibited from a Japanese school education, and the sales of the calligraphy brush decreased sharply. Our company started making artists' painting brushes since then. Export to Europe and the U.S.A. of painting brushes increased extensively from the second half of 1960s to 1970s, and our company was awarded as an enterprise which contributed to exports from the Minister of International Trade and Industry in 1969 and 1970. Our company also started making makeup brushes in 1990s. Nowadays, our company manufacture calligraphy brushes, artists' painting brushes, makeup brushes, and the other special brushes, and we are comprehensive manufacturer of brushes. We have been challenging new products which meet SDG's and Sustainability requirements as well as requirements for Japanese traditional crafts. We select different kinds of natural hairs. Natural hair has cuticles on its surface, which allows Kumanofude to hold more makeup. The tip of Kumanofude is never cut and kept intact, and the hairs feel softer on the skin. Therefore, Kumanofude can hold more makeup and feel so comfortable.

165 ・ Tokushima

AOLA LLC



ndigo Cedar wood Chopsticks Pair set with Tung box

WEB <https://aola.thebase.in/>

Instagram @aola.blue.mission

Tokushima prefecture is Japan's biggest domestic producer of the indigo plant. Because of this, the area is home to skilled craftsmen who have specialized in Indigo-Dyed for generations. By developing a unique past-like substance from the traditionally-produced indigo and treating it as a pigment rather than a dye, we established a technology that can be used as a paint or spray, and applied it to designs that make use of grain as part of construction materials, interiors, or small objects. These products exhibit a rich blue that still allows the natural surface grain of the wood to be visible, unlike painted wood. Due to the nature of the process, each piece is unique in terms of the depth of color achieved. As a reason for that, we would like to hand over our Japan Blue and another local valuable resource to the next generation.

166 ・ Tokushima

FUJI FURNITURE Co.,Ltd.

WEB <https://fuji-furniture.jp/en/>

Instagram @fuji_furniture_1959



L08670

167 ・ Ehime

MARUEI TOWEL CO., LTD.

WEB <https://imabariyokkin.jp/>

Instagram -

世界3大高級綿のひとつ、エジプト綿GIZAを
たっぷり使った幸せなザリウム感



idee Zora Premium White Hotel

168 ・ Ehime

miyazaki towel Inc.

WEB <https://www.miyazaki-towel.co.jp/>

Instagram @miyazakitowel

We mainly produce mufflers for towels!

Regardless of the season, from sweat wiping to UV protection

The original towel scarf that can be used both outdoors and indoors.



imabari muffler

169 ・ Ehime

SPC Co., Ltd.

WEB <https://sakura-spc.com/>

Instagram @sakura_beautylab



DAILY MOISTURE MASK AOMIKAN 30sheets

170 ・ Ehime

Tokiwa Industries, Ltd.

WEB <http://www.ochapack.com/>

Instagram @tokiwa_ochapack



Neo DripperIII

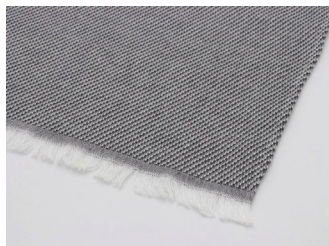
We are committed to manufacturing products with established quality assurance, aiming for products that can be fully accepted globally in order to fully meet customer needs. We are committed to continuous improvement in all processes from the product design stage to manufacturing and shipping, and to manufacturing highly reliable products that can be used with satisfaction by our customers, and to achieving "safety, security, and stability" even more.

171 ・ Ehime

WATANABE PILE TEXTILE CO., LTD.

WEB <https://www.watanabe-pile.jp/>

Instagram @watanabe_pile



BASKET

A piece that softens the day

The things we use many times a day have the power to make our daily lives a little better. Watanabe Pile's craftsmanship begins with imagining the lives of the people who use our products. Our towels and other textiles are full of unseen innovations. We weave day after day to make your life gentler and more comfortable.

172 ・ Kochi

SOMATAKA

WEB <https://www.somataka.com/>

Instagram @tanntosaknife



kishimame petty knife

Our Business: Design and distribute lifestyle goods especially Tosa handforged knives. Aiming to establish a sustainable society by connecting local traditions, culture, and resources to the future by producing attractive products that make their makers, users, and society happy.

Business start :Sep. 2020

Locate:Kochi, JAPAN

OUR VISION

Enjoy everyday life

We aim to build a sustainable society by providing products and services that bring joy to customer's everyday life.

OUR MISSION

Pass local traditions, culture, and resources on to the next generation.

173 • Fukuoka

BISQUE Co., Ltd.

WEB <https://www.bisque.co.jp/en>

Instagram @bisque_press

Hello, We are BISQUE produces original products from original designs, such as tableware, picnic related products, bags, pouches and so on. We sell not only the products, but also joy and cheerfulness through our products. We hope we will have a great opportunity to work with you.

TSUREDURE Mini Plate

174 • Fukuoka

NORIDOMI IRON WORKS CO., LTD.

WEB <http://www.noritetsu.com/>

Instagram @nori_nori_life

Noritomi Ironworks is a Kyushu-based sluice gate manufacturer founded in 1948. In 2020, the outdoor brand "Norinori Life" was launched based on the same technology. In 2021, a designer joined the company to develop higher value-added products.



STRONG PAPER BAG

175 • Fukuoka

SHIRAKI CRAFT&ARTS Co., Ltd.

WEB <https://www.chouchin.com/>

Instagram @shirakikougei_



Shiraki Kougei is a company manufacturing many of the Bon festival lanterns displayed beside a Buddhist altar in Yame City traditional crafts industry. Our artisans are mostly females who are tackling with creating new types of lanterns with delicacy and warmth only generated by hand suitable for our modern life styles. Drawing pictures without a sketch on an uneven surface of the lantern made of extremely thin washi of silk is one of the chances for chouchin artisans to show their skills which require a dexterous technique of delicate adjustments to make the pictures look beautiful through the light. Creating the bone of Hibukuro made of thin bamboo sticks and pasting washi or silk onto it must be done properly to draw delicate designs on it. The high quality of Yame chouchin is the result of careful work in each process.

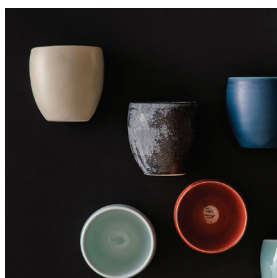
Muji

176 • Fukuoka

SK JAPAN CO., LTD.

WEB <https://skj-felicias.com/>

Instagram -



SK Japan 39th MADE IN JAPAN
39Arita
Double Wall Cup
 Double-Layered "Arita-Yaki" Porcelain Cup.



Double Wall Cup

177 • Fukuoka

THREE R CORP.



Yasugi Steel Koryu Ikebana Scissors 6.5”(165mm)

WEB <https://wazakurajapan.com/>

Instagram @wazakurajapan

WHAT WE DOWazakura Japan has been delivering since 2019 the best Japanese bonsai and ikebana tools worldwide. We were born not only wanting to make quality tools accessible worldwide, but aiming to keep Japanese crafts alive as well. That is why all of our tools are designed & manufactured in local Japanese workshops. We want you to enjoy a little taste of Japan at home with tools 100% Made in Japan by skilled local artisans. What Wazakura can do for you: Order flexibility We adapt to your needs. Low quantity and combined orders request available. Marketing support Sharing our weekly produce of product materials and boosting your marketing via SNS. Gift packaging Japanese modern style gift package, the best to offer your clients. ENGLISH support Get Japanese made products with full ENGLISH support. And other languages supported are French, Spanish, and Korean. New requests Missing a special tool or have special requests? Send us an inquiry and get what you need!

178 • Saga

ARITA PORCEALIN LAB., INC.



Conic White Matte

WEB <https://aritaporcelainlab.com/en/>

Instagram @aritaporcelainlab

In order to take over ARITA history connected more than 400 years to next era, we try to arrange our product to fit modern life style to protect our tradition and craftman ship. We are very happy if our products to make a time to have meals enjoy and enrich.

179 • Saga

Daiei Industrial Co., Ltd.



acrylic Multi Tray

WEB <https://www.daiei-gr.co.jp/>

Instagram @eau_object

For over 40 years, our company started from the surface decoration of plastics, and now we are able to carry out the integrated production of plastics. This is also thanks to the support and help of many customers. In today's severe turmoil, all employees of our company are aware of the idea of community with a shared destiny with a spirit of harmony. At the same time, we are working together to become a company that can propose new value to our customers. We will continue to evolve DAIIEI's basic technology, and all of us will evolve to "become a company that customers need".

180 • Saga

FUJIMASA Co., Ltd.



Color Glazing & Light Drawing Fragrance Smoke 27cm Flat Plate

WEB <https://www.fujimasa.co.jp/en/>

Instagram @fujimasa_santokurokumi

Fujimasa Co., Ltd. mainly runs a wholesale business of Arita ware commercial tableware, and contributes to the world's food culture by inspiring and bringing happiness to customers through our tableware. We aim to become an absolute presence in hotel and restaurant industries worldwide. Steadily increasing the benefits and gaining attention in the Japanese market, we are looking forward to starting the Asia market, even the overseas market. We hired an employee from Hong Kong and started to focus and pay effort on expanding overseas.

181 • Saga

GYOKUYU Co., Ltd.

WEB <http://www.gyokuyu.jp/>

Instagram @gyokuyu_folk_design_



KINTSUGI DESIGN CUP (RIVER)

Aspiring to help the development of the local community with Arita ware. Although Arita ware was once highly regarded both within and outside of Japan for its advanced skills and sophisticated designs, recently, the production volume has been shrinking yearly due to a decline in domestic demand and a decline in exports due to economic development and the strong yen. However, the accumulated advanced skills and diversity of Arita ware are still with us, so we hope to create new possibilities and aspire to help the development of the local community.

182 • Saga

Kanezen Kiln Co., Ltd.

WEB <http://www.kanezengama.co.jp>

Instagram @kanezengama_arita



soft bowl 150 L Snow gold and silver

We have been producing tableware for business use mainly for inns and restaurants, but since around 2010, we have also been focusing on producing tableware for home use, and recently, we have been making tableware that can be used both in restaurants and at home.

The black rust shibori and snow are representative examples. The black rust shibori uses minerals to give the surface a metallic look, which changes in the kiln and gives each piece a different appearance, while the snow glaze utilizes spraying techniques and mineral characteristics to create fine irregularities on the surface, giving it a sparkling appearance.

We are constantly testing new glazes and developing products that bring out the best of minerals (materials).

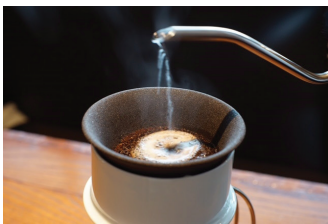
We would like to become a brand that lets consumers know that gKinzen Seitoshō = Arita-yaki Pottery Company™ and convey the quality of Arita-yaki (traditional craft).

183 • Saga

Kubota Minoru Ceramics Ltd. KUEMON

WEB <https://kyuemongama.com/>

Instagram @kyuemon_arita



Ceramic Filter and DripperSet NewModel

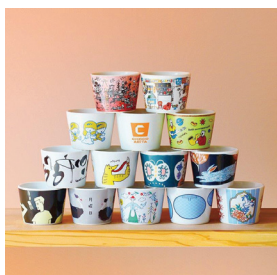
We make products by combining original materials not found in other companies with the traditional molding and firing methods of Arita ware. We try to make products that combine design and functionality.

184 • Saga

UTSUWA TO DESIGN

WEB <https://utsuwatodesign.jp>

Instagram @utsuwa_to_design



CHOCO ARITA

Born in Fukuoka Prefecture and currently resides in Arita Town, Saga Prefecture. After working as a graphic designer in Tokyo, moved to Arita and started making pottery. After graduating from the two-year course at Saga Prefectural Arita Ceramic College, I set up his studio in Uchiyama and is currently making pottery mainly using potter's wheel. I aims to produce pottery that can be used in daily life without hesitation, regardless of Japanese or Western scenes.

185 • Nagasaki

HAMATO Co., Ltd.



flowers corner plate

WEB <https://hasami-hamato.co.jp/>

Instagram @h.seedhasamiyaki/?hl=ja

We have a flexible and friendly lineup

Hamato Co., Ltd. handles a wide variety of ceramic products, including Hasami-yaki and Arita-yaki porcelain. We have built relationships with local manufacturers over our 100-year history in business.

We can handle most of Hasamiyaki and Arita-yaki porcelain products.

We also have about 1,000 items of original products, and these original products are very popular overseas as well.

We have also been working on OEM for about 50 years, and can develop products that meet the needs of our customers.

We are able to meet a wide range of needs, so we would be happy to discuss your needs with you.

We look forward to working with you.

186 • Nagasaki

Hirado Kohsyo Danemon Kiln



HIRA-061 Sake cup with Chrysanthemum Decoration

WEB <https://hiradokohsyo.com/>

Instagram @taiyonakazato

MIKAWACHI WARE derives from mikawachi town, Nagasaki prefecture in the Edo Period (the 17th century) and that is the porcelain made by Korean masters who immigrated to Japan. The fine dyeing by pale blue colored zaffer on a pure white porcelain that is born out of "Amakusa pottery stone" which is a raw material for the pottery and porcelain said to be of the world's highest grade, and the fine and elaborate workmanship had long been protected as the "Purveyor ceramic kiln" making vessels for the emperor and feudal lords. In the 18th century, as a result of export to foreign countries, we have earned high praise in Europe, and even now it is exhibited in world-renowned art museums such as the British Museum and the V & A Museum of Art, and is widely loved both at home and abroad. The "Hirado chrysanthemum fine engraving technique" in which the cutting out of flower petals one by one with craftsmen's hands, and it is decorative technique that requires careful calculation, advanced technology and perseverance from molding to firing, has been designated as Nagasaki Designated Intangible Cultural Property in 2021. We at Hirado Kohsyo Danemon Kiln began expanding our business overseas in 2014

and are furthering our efforts with goals to revitalize the Mikawachi Ware production region by building recognition of Mikawachi Ware in overseas countries and encouraging foreign guests to visit our kilns directly.

187 • Kumamoto

asobougama



volcanic plate

WEB -

Instagram @futoshiyamashita

We produce pottery from the familiar natural environment of Aso volcano. Basically, we procure soil and glaze raw materials from the nature around us, and we manufacture tableware, vases, tea ware, etc. so that you can feel the energy of the volcano.

188 • Oita

Beppu Tsuge Kogei Co., Ltd.

WEB <https://www.tsuge-kushi.com/>

Instagram -



Tsuge Brush 4row with square handle

Beppu Tsuge Kogei was founded in 1919 (Taisho 8th) as a Japanese boxwood woodwork studio.

We started with Japanese traditional boxwood comb and hair pin (Kanzashi) for Kimono style and the craftwork have been changed over the time.

According to hair style changes with changes of Japanese Kimono to Western clothing, we are making hair brush delicately handcrafted from pieces while preserving tradition.

189 • Oita

DAITETSU Co., Ltd.

WEB

Instagram @d_and.deco



RIN

190 • Oita

Hisatsune Forest Co., Ltd.

WEB <http://rokugatsuyohkanomori.jp/>

Instagram @rokugatsuyohka



Our philosophy towards "Feel the forest in the daily living" About our brand "Rokugatsu Yohka" Hisatsune Forest being a forestry company, we present our product "Rokugatsu Yohka" as one of a life-style brand that connects the forest and the people. Around June Eighth (Rokugatsu Yohka in Japanese) when gently rain starts to drop as the beginning of the rainy season, the plant sprouts become more vital from the rain and it is time for coupling and nurturing for bugs and birds which they swing around the woods. We produce products that can "feel the forest in the daily life" and concentrate on choosing materials that can sense the forest's abundance, that are natural and non-artificial, organic, and harvested in Oita so it could support the sustainable forest with full of wild lives and nature ecosystem.

Gift set in Paulownia box (S)



【Contact】 Japan External Trade Organization (JETRO)
Digital Marketing Division, Digital Marketing Department
E-mail: DNA-project@jetro.go.jp
https://www.jetro.go.jp/en/eccj/takumi_next.html
Copyright © 2024 JETRO. All rights reserved