



ANIME

行け！アニメ

POWERED BY PERISCOOP ANIME

# PRESENTATION TOPICS

## DEMOGRAPHS

- OUR DNA & DIRECTORS TEAM
- DUTCH BENELUX DEMOGRAPHY
- POTENTIAL AUDIENCE TARGET
- OPERATIONAL SVOD PARTIES
- OPERATIONAL TVOD PARTIES

## CURRENT ANIME MARKET

- SERIE CONTENT AVAILS IN OUR MARKET
- PARTIES PROGRAMMING ANIME
- ASIAN FAIRS
- ANIME AUDIENCES
- CURRENT LINE UP PERISCOOP

## BUSINESS PLAN

- STRATEGY
- PARTNERS
- MARKETING
- EXPECTATIONS
- GROWTH
- TIMELINE/ORGANIZATION

**PERISCOOP** FILM

**- DNA -**

**PERISCOOP** ANIME

Periscoop Film is a Amsterdam based film distribution company founded in 2015 by the producers of Fu Works ( San Fu Maltha ) and Submarine ( Bruno Felix & Femke Wolting)

**Our Mission statement is:** *“to distribute the content we would like to have created ourselves “.*

Interesting international Documentaries, animated feature films and genre bending movies that enrich the Benelux movie landscape and make it more diverse.

Acquisitions include amongst others : The Wolfpack, Climax, Gunda, Your name, Dragon Ball Broly, My Hero Academia, For Sama, Free Solo, Inu-Oh, Evangelion series, and the highly awarded documentary - Flee ( 147 award nominations)

**Territory:** Our work area is the Benelux (Belgium, Netherlands and Luxembourg) , we acquire all rights , but since we have to localize all content our focus is mainly set on the Dutch speaking part of the territory.

**Services:** Our supply chain always starts with Theatrical exploitation, we have our own inhouse booking, sales and marketing specialists, Tvod, Svod , Airline ,Free Tv and Avod is of course all part of our<sup>2</sup> daily operation.

**PERISCOOP** FILM

- DNA -

**PERISCOOP** ANIME

Our personal love and passion for Anime content resulted mid 2020 in creating a new label called **Periscoop Anime**, under that label we theatrical released a number of quality Anime features such as *My Hero Academia: Two Heroes*, *Promare*, *DemonSlayer Movie: Mugen Train*, *One piece RED*, *Jujutsu Kaisen*, *Inu-Oh* and *Slime*.

These releases helps us a lot creating the “ Anime brand “ reaching early adapters and genre lovers, but making anime top of mind for a broader and younger audience , we are investing in buying Anime series to also get our youngsters hooked !

Currently we are creating our own Advertised Video On Demand– Anime platform ( operational this spring) , set up partnerships with local Benelux and international Streamers and connect to Fast Tv and Amazon Prime’s shop in shop streaming services. Our goal is to offer 1500 hours of Anime series content at the end of this year.

## Directors Team



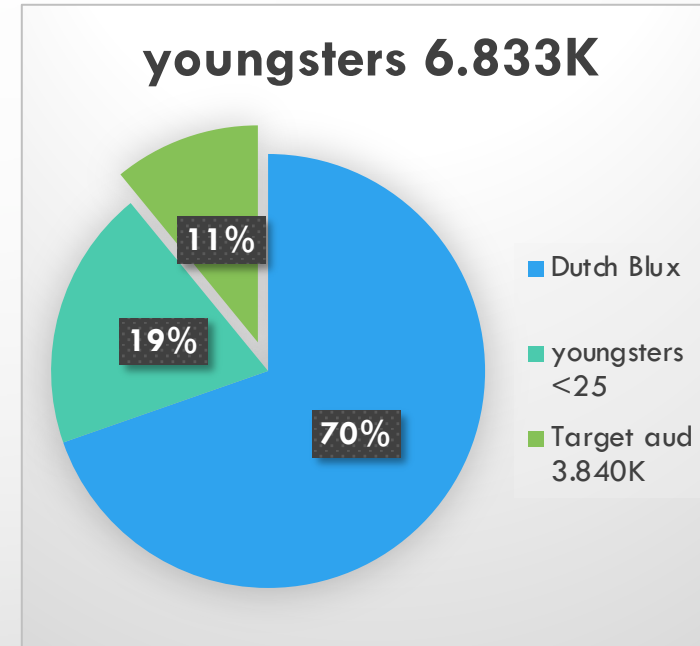
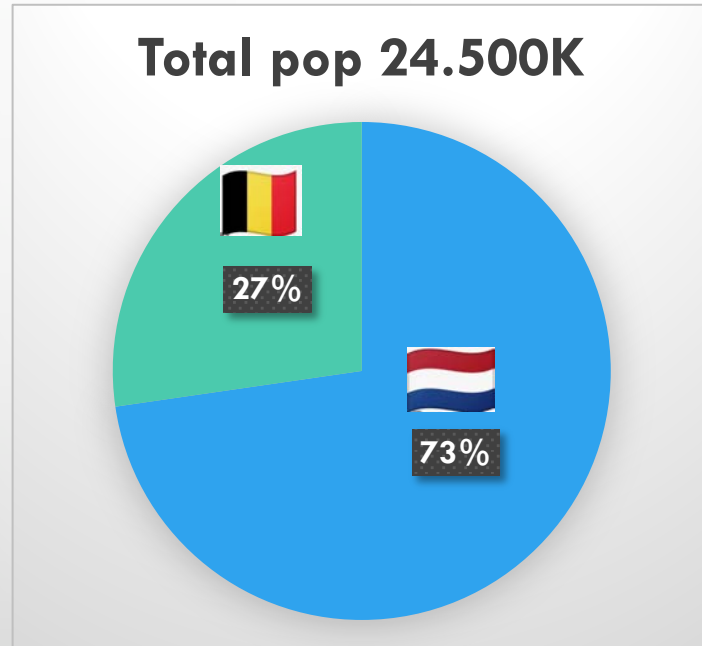
- IN 2000, BRUNO FELIX, TOGETHER WITH FEMKE WOLTING, FOUNDED SUBMARINE, AN INDEPENDENT FILM, TELEVISION AND TRANSMEDIA PRODUCTION COMPANY, SPANNING FEATURES, DOCUMENTARIES AND ANIMATION PRODUCTIONS. SUBMARINE BOASTS A ROSTER OF AWARD-WINNING PRODUCTIONS CREATED IN COLLABORATION WITH AN EXTENSIVE NETWORK OF INTERNATIONAL ACCLAIMED DIRECTORS. IN 2012, BRUNO FOUNDED, TOGETHER WITH FEMKE WOLTING AND TOMMY PALLOTTA, A NEW CREATIVE PRODUCTION COMPANY, SUBLA. BASED IN LOS ANGELES, SUBLA DEVELOPS AND PRODUCES FEATURE FILMS AND INTERACTIVE EXPERIENCES THAT EXPLORE NEW FORMS OF STORYTELLING THAT ENCOMPASS TRADITIONAL AND EMERGING MEDIA. IN 2015, TOGETHER WITH PRODUCTION COMPANY FU WORKS, SUBMARINE FOUNDED DISTRIBUTION COMPANY PERISCOOP FILM WHERE HE ACTS AS MANAGING DIRECTOR.
- BRUNO HAS PRODUCED MANY AWARD-WINNING ANIMATION SERIES THAT HAVE BEEN SOLD TO BROADCASTERS AROUND THE WORLD, SUCH AS THE EMMY-NOMINATED SERIES HOLA LARA!, KIKA & BOB AND NAKED. HE ALSO PRODUCED THE SECOND SEASON OF THE CROSS MEDIA ANIMATION SERIES PICNIC WITH CAKE AND MATTEL'S THE WELLIE WISHERS FOR AMAZON. RECENTLY, BRUNO AND SUBMARINE HAVE PRODUCED THE ADULT ANIMATION FILM BUÑUEL IN THE LABYRINTH OF TURTLES (DISTRIBUTED BY PERISCOOP FILM) AND HAVE FINISHED PRODUCTION ON UNDONE, AMAZON'S FIRST ADULT-ANIMATED SERIES FROM BOJACK HORSEMAN CREATOR RAPHAEL-BOB WAKSBERG. OTHER WELL KNOWN ANIMATION SERIES PRODUCED BY SUBMARINE ANIMATION CURRENTLY BEING BROADCASTED ARE CHILDREN ANIMATION SERIES FOX & HARE AND HUGGLEBOO.
- CURRENTLY SUBMARINE IS COPRODUCING TWO ANIMATED FEATURE FILMS. THE FIRST, **WHERE IS ANNE FRANK**, IS DIRECTED BY ARI FOLMAN AND INSPIRED BY ANNE FRANK'S LIFE AND DIARY. THE SECOND IS A HYBRID LIVE-ACTION AND ANIMATED CLASSICAL BALLET FILM ENTITLED **COPPELIA**, A MODERN FAIRYTALE WHICH QUESTIONS CONTEMPORARY BEAUTY IDEALS. COPPELIA FEATURES BALLET DANCER MICHAELA DEPRINCE IN THE ROLE OF THE MAIN CHARACTER SWAN, AMONGST OTHER PRINCIPAL DANCERS AT THE RENOWNED DUTCH NATIONAL BALLET.



## Directors Team

- SAN FU MALTHA WAS BORN JULY 17TH, 1958 IN ROTTERDAM (THE NETHERLANDS) AND WAS INTERESTED IN FILM AS LONG AS HE CAN REMEMBER. IN HIGH SCHOOL HE WAS A VERY ACTIVE MEMBER OF THE FILM CLUB. WITH TWO TELEVISIONS IN HIS ROOM - AND BACK THEN WITHOUT A REMOTE - HE NEVER WANTED TO MISS ANYTHING.
- AFTER GRADUATING CUM LAUDE WITH A MAJOR IN COMMUNICATIONS, HE DECIDED TO FIRST EARN HIS MASTER'S DEGREE IN ECONOMICS. AFTER THAT HE ENDED UP IN ADVERTISING, DEALING WITH CLIENTS LIKE NIBB-IT AND MARS HE WAS ASKED TO DEVELOP THE MARKETING AND PUBLICITY FOR WARNER BROS IN THE NETHERLANDS. SAN FU ORGANIZED THE MARKETING CAMPAIGNS FOR, AMONG OTHERS, THE FILMS COCKTAIL (1989) AND BATMAN (1989) WITH A SPECTACULAR PREMIERE IN CINEMA PATHÉ TUSCHINSKI.
- AFTER WARNER BROS, COLUMBIA TRISTAR FOLLOWED WITH MOVIES LIKE SHE'S OUT OF CONTROL (1989), LOOK WHO'S TALKING (1989) AND TOTAL RECALL (1990). THEN HE WAS OFFERED THE OPPORTUNITY FROM DUTCH DISTRIBUTOR/PRODUCER METEOR FILM/MOVIES FILM PRODUCTION TO NOT ONLY DISTRIBUTE FILMS BUT TO ACQUIRE THEM AS WELL. BESIDES THAT, HE ALSO TOOK HIS FIRST STEPS IN PRODUCTION. AS EXECUTIVE PRODUCER OF THE FILM ANGIE (1993) AND SHORTLY THEREAFTER AS ASSOCIATE PRODUCER OF SUITE 16 (1994). WHEN METEOR FILM WAS TAKEN OVER BY POLYGRAM HE WAS ASKED TO BECOME HEAD OF ACQUISITIONS FOR POLYGRAM INTERNATIONAL IN ENGLAND.
- BACK IN THE NETHERLANDS IN 1995 HE STARTED THE PRODUCTION COMPANY FU WORKS, WHICH HAS GROWN INTO ONE OF THE MOST LEADING FEATURE FILM PRODUCTION COMPANIES IN THE NETHERLANDS. HE PRODUCED AWARD-WINNING FILMS LIKE BLACK BOOK (2006), LOVE IS ALL (2008), WINTER IN WARTIME (2008) AND SÜSKIND (2012). IN THE MEANTIME, SAN FU SET UP A FILM DISTRIBUTION THAT DISTRIBUTED FILMS LIKE MAGNOLIA (1999), THE PIANIST (2002) AND THE LORD OF THE RINGS-TRILOGY. A-FILM BECAME THE LEADING INDEPENDENT DISTRIBUTOR IN THE NETHERLANDS. IN 2005 HE SOLD HIS SHARES AND STARTED FOCUSING ON HIS WORK AS A PRODUCER AND HIS PRODUCTION COMPANY FU WORKS.
- IN 2015, SAN FU MALTHA DECIDED TO BECOME ACTIVE AGAIN IN DISTRIBUTION, NEXT TO HIS ACTIVITIES AS A PRODUCER AND CO-FOUNDED PERISCOOP FILM, WHERE HE ACTS AS HEAD OF ACQUISITIONS.

# DUTCH SPEAKING BENELUX DEMOGRAPHY



## DUTCH BENELUX STREAMERS

NETFLIX



videoland.  
BY RTL

film

streamz



Cine  
MEMBER  
Hét filmhuis thuis

DUSK

vtm GO

SONER

PLAYMORE



# TRANSACTIONAL VIDEO ON DEMAND PLAYERS



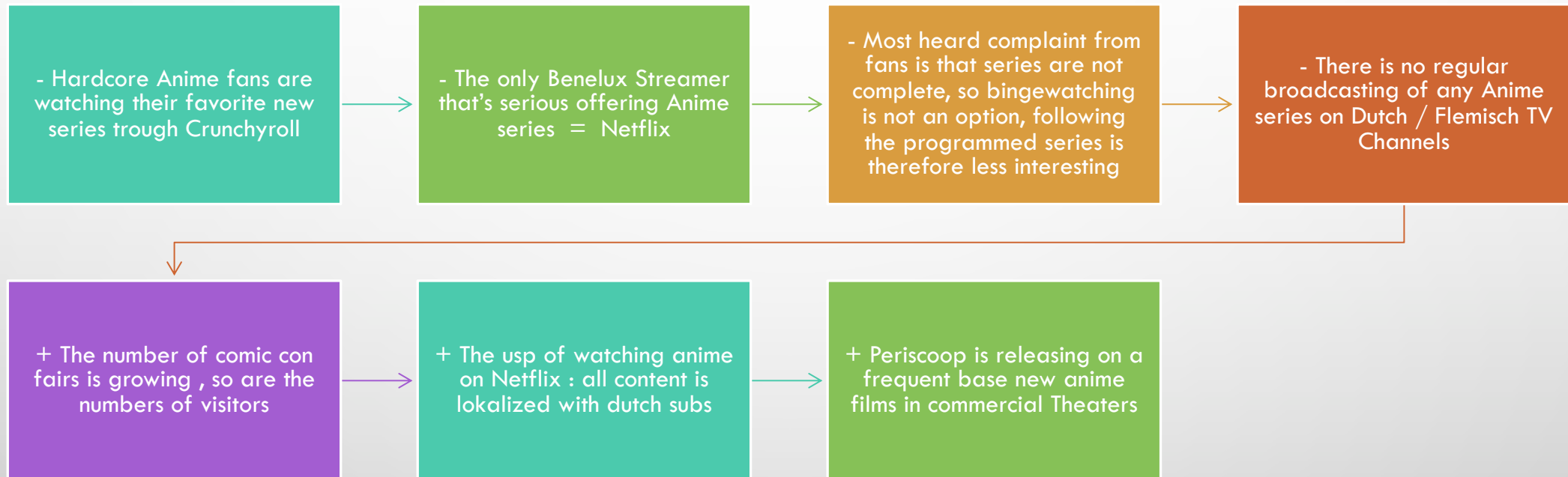
**Rakuten TV**

**SONER**

**PLAY MORE**



# CURRENT ANIME MARKET





Hero Mask



Kengan Ashura



Kuromukuro



The Disastrous ...



The Seven Dead...



Kuroko's Basket...



Trigun



Sword Gai: The ..



Revisions



Jojo's Bizarre Ad...



Carole & Tuesday



The Disastrous ...



Hi Score Girl



Great Pretender



Dorohedoro



Back Street Girl...



Glitter Force



Knights of the Z...



Edens Zero



The Heroic Lege...



Samurai 7



Karakai Jozu No...



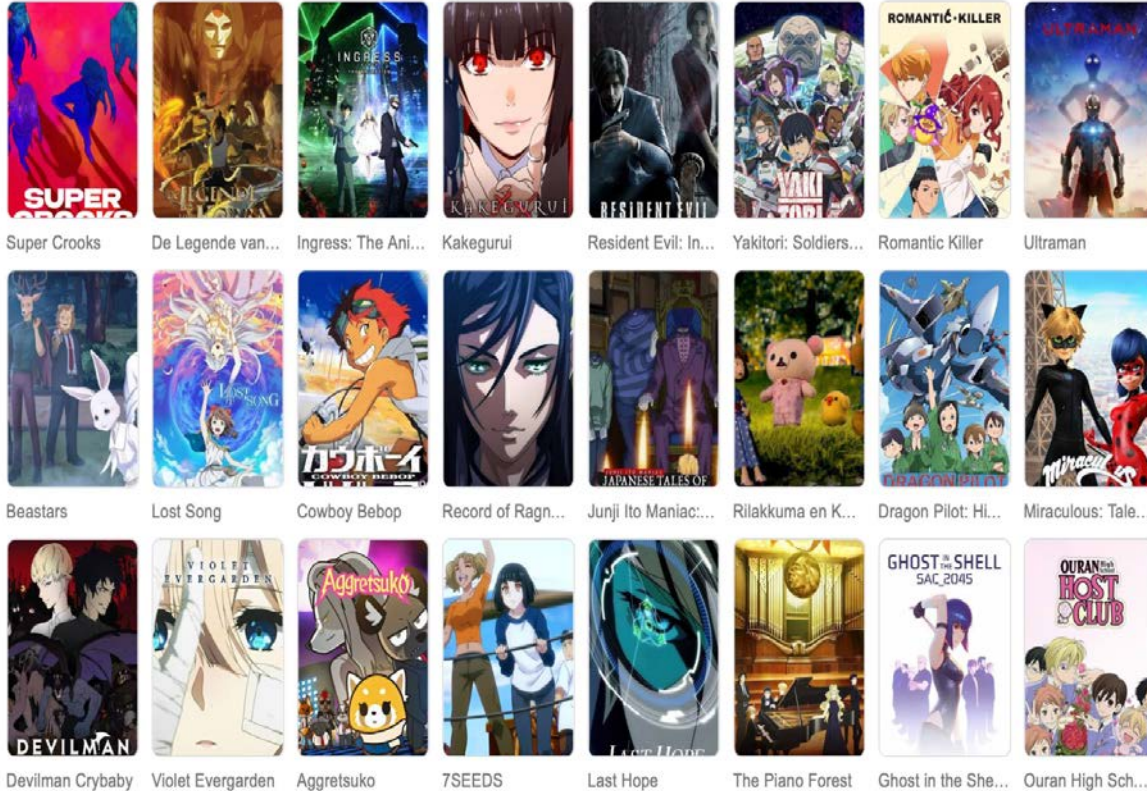
Dennō Coil



Fullmetal Alche...

# CURRENT NETFLIX SERIES

# CURRENT NETFLIX SERIES



# THE GROWING POPULARITY OF COMICON FAIRS

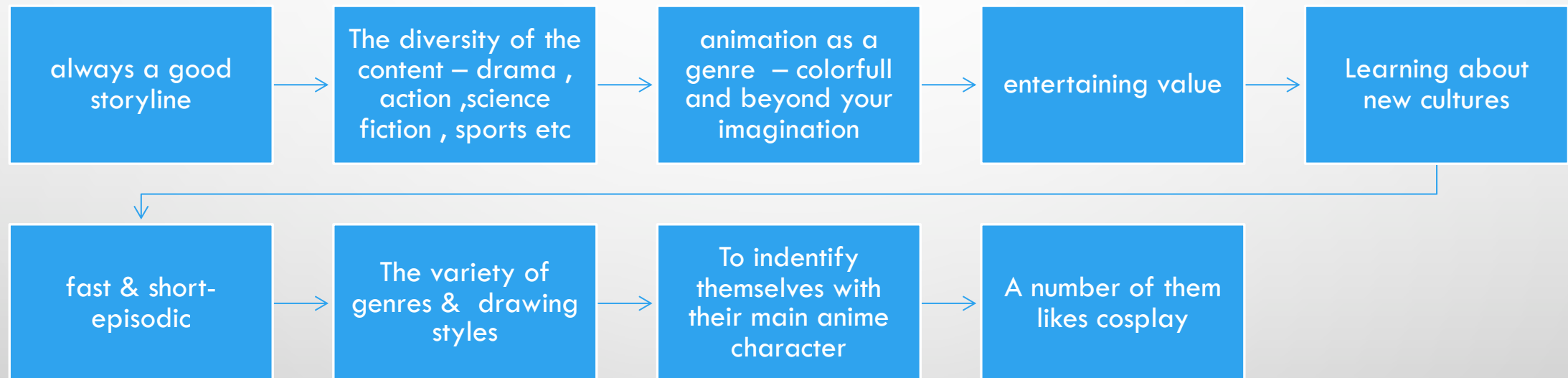


Heroes Dutch comic con – summer & winter edition – average of 50.000 visitors and growing ....

# THE GROWING POPULARITY OF COMICON FAIRS



# ANIME FANS LIKE ...



# THE ANIME FAN TARGETED ...

Primary Target age  
is 12 – 25

Secondary 25-40 /  
8-12

Fanbase male &  
female is almost  
equal

active on social  
media

Love the pop culture

Is a bit nerdy / a  
geek ( through the  
eyes of a non anime  
lover )

Live – long Loyal to  
it's favourite  
character

Well educated

Love to play games

The Dutch Benelux  
potential anime  
lovers base is almost  
4 million youngsters



GO-ANIME.NL  
GO-ANIME.VL

CONTENT



ANIME

行け！アニメ

GO

ANIME

行け!アニメ

POWERED BY PERISCOOP ANIME

OFFERS HIT  
PROPERTIES &  
A WIDE  
VARIETY OF  
GENRES TO  
ATTRACKT NEW  
AUDIENCES

Action

School life

Surnatural

Comedy

Isekai

sport

Martial arts

Sci-fi

Dark  
Fantasy

Romance

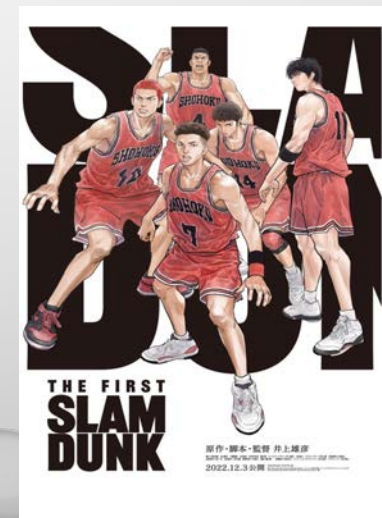
fantasy

LGBTQIA

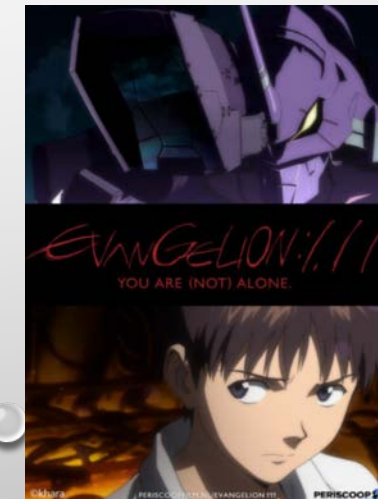
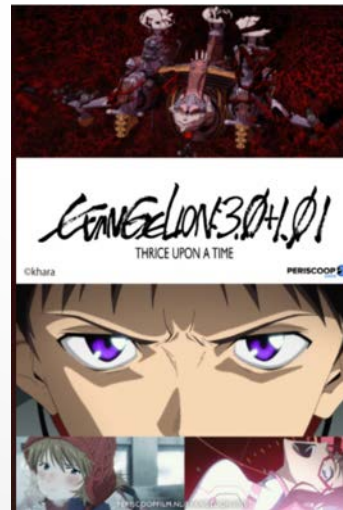
Ecchi



# CURRENT LINE UP FILM



# CURRENT LINE UP FILM



# NEW LINE UP FILM '24





ANIME  
SERIES



# ASSASSINATION CLASSROOM SERIES S.1

FORMAT 22 EPS A 24 MIN : HD : 9+ : PY2015-16

IMDB RATING 8.8 : ACTION, COMEDY, SCI-FI

SPOKEN LANGUAGE JAPANESE : SUBS NL

SYNOPSIS : KORO SENSEI IS AN ALL-POWERFUL AND MYSTERIOUS BEING WHO BECOMES A CLASS 3-E TEACHER AT KUNUGIGAOKA HIGH SCHOOL AFTER DESTROYING THE MOON AND PROMISING TO BLOW UP THE EARTH THE FOLLOWING MARCH. IN ORDER TO PREVENT THIS DISASTER, THESE STUDENTS BECOME ASSASSINS, WITH THEIR TEACHER AS THE TARGET.



# ASSASSINATION CLASSROOM SERIES S.2

- FORMAT 25 EPS A 24 MIN : HD : 9+ : PY2015-16
- IMDB RATING 8.8 : ACTION, COMEDY, SCI-FI
- SPOKEN LANGUAGE JAPANESE : SUBS NL

BACK FROM THEIR MOST "RELAXING" VACATION ON THE ISLAND OF OKINAWA, CLASS 3 – E RETURNS TO THEIR SCHOOL FOR A NEW SEMESTER. BETWEEN OBTAINING THEIR DIPLOMA, THEIR MISSION OF ASSASSINATIONS AND THE DIRECTOR, GAKUHÔ ASANO WHO IS NOT ABOUT TO LEAVE THEM ALONE, THIS RETURN TO SCHOOL PROMISES NOT TO BE EASY!



# BURNING KABAI SERIES S.1



- FORMAT 12 EPS A 24 MIN : HD : 9+ : PY2021
  - IMDB RATING 7.0 : ACTION, SPORT
  - SPOKEN LANGUAGE JAPANESE : SUBS NL

TATSUYA YOIGOSHI, NICKNAMED “THE UNTOUCHABLE” IS A FORMER COLLEGE FOOTBALL STAR DISGUSTED BY THE SPORTS WORLD. SINCE ENTERING HIGH SCHOOL, HE HAS SWORN TO STOP ALL SPORTING LIFE. HOWEVER, HIS FAME PRECEDES HIM AND ALL THE HIGH SCHOOL SPORTS CLUBS SEEK TO RECRUIT HIM.

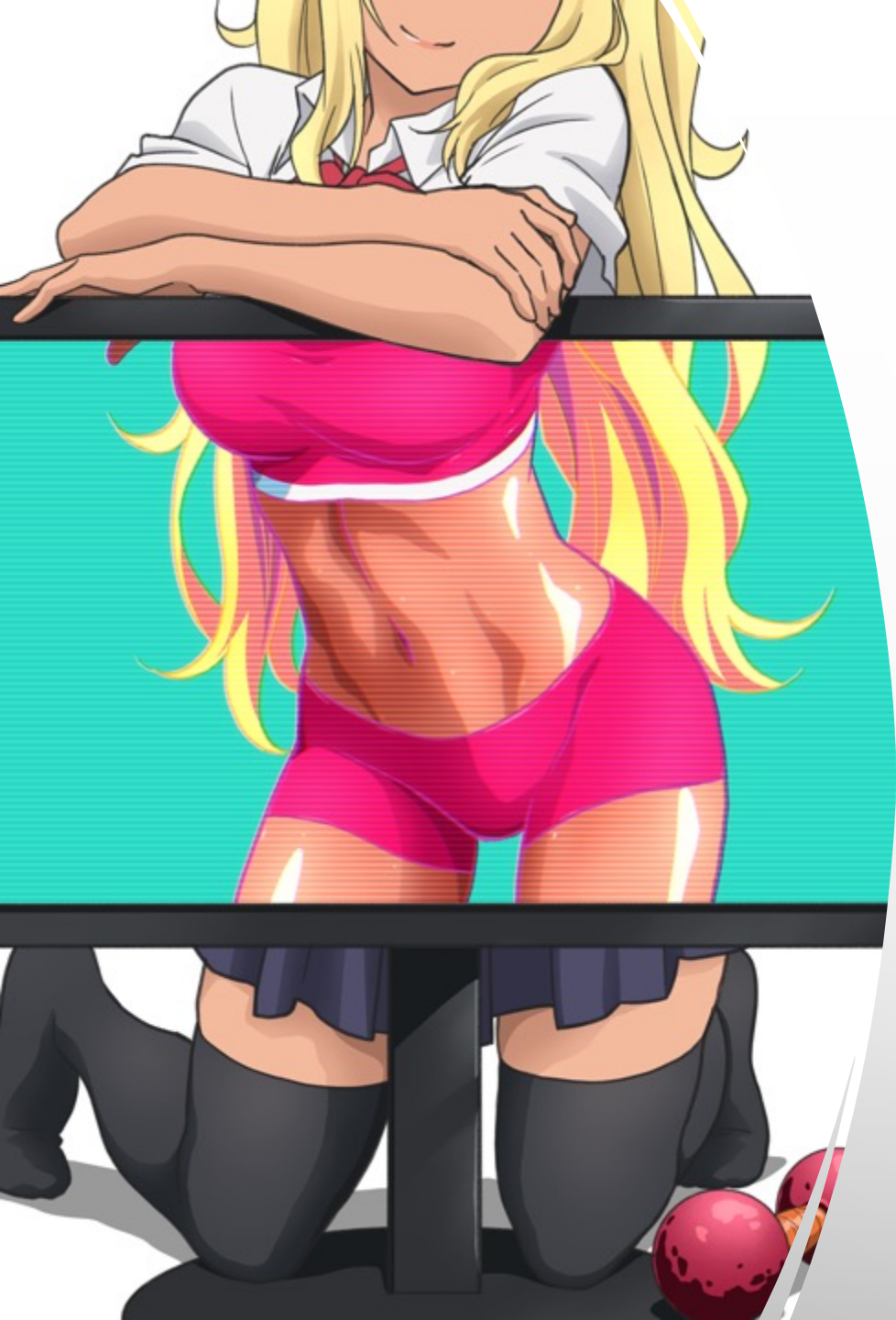


# CALL OF THE NIGHT SERIES S.1



- FORMAT 13 EPS A 24 MIN : HD : 12+ : PY20
- IMDB RATING 7.4 : COMEDY, FANTASY, VAMPIRE, SHONEN
  - SPOKEN LANGUAGE JAPANESE : SUBS NL

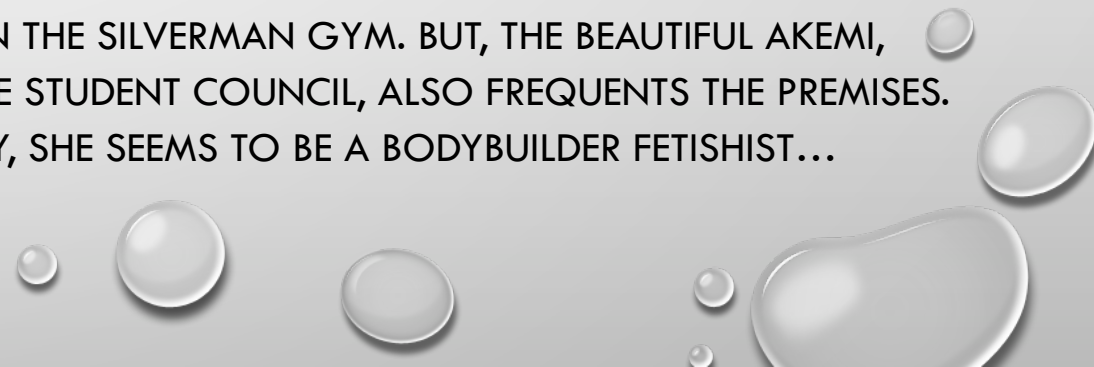
ALTHOUGH HE IS APPRECIATED BY HIS COMRADES, KÔ YAMORI, A 14-YEAR-OLD SCHOOLBOY, NEVERTHELESS DISPLAYS A FACADE OF BEHAVIOR, WHICH LEADS HIM TO STOP HIS SCHOOL COURSE. VICTIM OF INSOMNIA FOR SOME TIME, HE BEGINS TO WANDER AT NIGHT IN THE HOPE OF STEMMING THIS PHENOMENON. IT WAS DURING ONE OF THEM THAT HE MET NAZUNA NANAKUSA, A VAMPIRE, ALSO CALLED "NIGHT WALKER" WHO MADE HIM WANT TO BECOME ONE AS WELL. THE ONLY CONDITION FOR HER TO GRANT HIS REQUEST IS THAT KÔ FALLS IN LOVE WITH HER, WHICH SEEMS...



# DUMBBELL – HOW MUCH CAN YOU SERIES S.1



- FORMAT 12 EPS A 24 MIN : HD : 12+ : PY2019
- IMDB RATING 7.0 : COMEDY, SPORT, FITNESS , DRAG, ECCHI
  - SPOKEN LANGUAGE JAPANESE : SUBS NL
- HARD TO BE IN SHAPE WHEN YOU'RE A BIG EATER! CLOTHES ARE STARTING TO TIGHTEN AND SUMMER IS FAST APPROACHING! SAKURA HIBIKI PAYS THE PRICE. SO SHE DECIDES TO GO ON A DIET BY ENROLLING IN THE SILVERMAN GYM. BUT, THE BEAUTIFUL AKEMI, PRESIDENT OF THE STUDENT COUNCIL, ALSO FREQUENTS THE PREMISES. IRONICALLY, SHE SEEMS TO BE A BODYBUILDER FETISHIST...





# EDENS ZERO

## THE MOVIE – RECAPITULATION

### SEASON 1

- FORMAT 1 X 72 MIN : HD : 9+ : PY2023
- IMDB RATING 7.1 : SCI FI, FANTASY, ACTION, SHONEN
- SPOKEN LANGUAGE JAPANESE : SUBS NL

AFTER RESCUING CONNOR, OUR HEROES CONTINUE TO EXPLORE THE GALAXY IN SEARCH OF MOTHER, THE GODDESS OF THE UNIVERSE. UNFORTUNATELY, THEY FIND THEMSELVES STRUGGLING WITH DRAKKHEN JOE, THE ALCHEMIST OF DARKNESS, DETERMINED TO SEIZE EDENS ZERO. IN ORDER TO COUNTER THEIR ENEMY, SHIKI, REBECCA AND HAPPY DECIDE TO LEAD A LARGE-SCALE INFILTRATION WITHIN THEIR OPPONENT'S BATTLESHIP. TERRIBLE CLASHES ARE ABOUT TO BREAK OUT...



# EDENS ZERO SERIES S.2

- FORMAT 12 EPS A 25 MIN : HD : 9+ : PY2023
- IMDB RATING 7.1 : SCI FI, FANTASY, ACTION, SHONEN
- SPOKEN LANGUAGE JAPANESE : SUBS NL

AFTER RESCUING CONNOR, OUR HEROES CONTINUE TO EXPLORE THE GALAXY IN SEARCH OF MOTHER, THE GODDESS OF THE UNIVERSE. UNFORTUNATELY, THEY FIND THEMSELVES STRUGGLING WITH DRAKKHEN JOE, THE ALCHEMIST OF DARKNESS, DETERMINED TO SEIZE EDENS ZERO. IN ORDER TO COUNTER THEIR ENEMY, SHIKI, REBECCA AND HAPPY DECIDE TO LEAD A LARGE-SCALE INFILTRATION WITHIN THEIR OPPONENT'S BATTLESHIP. TERRIBLE CLASHES ARE ABOUT TO BREAK OUT...



# FAIRY TAIL COMPLETE SERIE



- FORMAT 328 EPS A 25 MIN : HD : 12+ : PY2009 - 2019
- IMDB RATING 7.9 : MAGIC, FANTASY, ACTION, SHONEN, ADVENTURE
  - SPOKEN LANGUAGE JAPANESE : SUBS NL

THE KINGDOM OF FIORE. THIS PERPETUALLY NEUTRAL COUNTRY OF 17 MILLION INHABITANTS IS ALSO A WORLD OF MAGIC AND MYSTERY. MAGIC IS PART OF EVERYDAY LIFE AND ITS TRADE IS COMPLETELY FREE. THUS, SOME, PAST MASTERS, DECIDE TO MAKE IT THEIR PROFESSION. THEY ARE CALLED THE MAGI. FOR A FEE, THEY WORK FOR THE GOOD OF THE COMMUNITY.

THEIR STRENGTH IS ALSO THEIR NUMBER, THEY GATHER IN DIFFERENT GUILDS, SCATTERED ALL OVER THE KINGDOM. AMONG THESE IS A GUILD  
ALL...

# HUNTER X HUNTER

## COMPLETE SERIES

- FORMAT 148 EPS A 24 MIN : HD : 12+ : PY2011- 2014
- **IMDB RATING 9.0** : COMPETITION, SHONEN, ADVENTURE
  - SPOKEN LANGUAGE JAPANESE : SUBS NL

GON FREECES IS A 12-YEAR-OLD BOY WHO DREAMS OF BECOMING A "HUNTER". THE "HUNTERS" ARE ELITE ADVENTURERS IN FIELDS AS DIFFERENT AS COOKING, ARCHEOLOGY, JUSTICE... THEY CAN ALSO BE BOUNTY HUNTERS OR CONSULTANTS. GON WILL PRESENT HIMSELF FOR THE EXAM IN ORDER TO FIND HIS FATHER WHOM HE DOES NOT KNOW, ONE OF THE GREATEST "HUNTERS" OF HIS TIME. THREE OTHER ASPIRING "HUNTERS" WILL APPROACH GON, IN ORDER TO FORM A SOLID AND UNITED TEAM. ONCE THEIR COMMON GOAL IS ACHIEVED, THE QUEST AHEAD WILL BE MOST EXCITING.



# JUNJO ROMANTICA SERIES 1-3

- FORMAT 37 EPS A 24 MIN : HD : 12+ : PY2008- 2017
- IMDB RATING 7.7 : LGBTQIA, DRAMA, COMEDY
- SPOKEN LANGUAGE JAPANESE : SUBS NL

JUNJO ROMANTICA FOLLOWS THE RELATIONSHIPS OF 3 VERY DIFFERENT COUPLES. ROMANTICA, EGOIST, AND TERRORIST ARE ALL FULL OF ROMANCE, LONGING, AND OF COURSE, DRAMA. IT'S COMPLICATED, BUT SO VERY WORTH IT.





# MY ISEKAI LIFE SERIES S 1

- FORMAT 12 EPS A 24 MIN : HD : 12+ : PY2022
- IMDB RATING 6.1 : ACTION, ADVENTURE, ISEKAI, MONSTERS , MAGIC
  - SPOKEN LANGUAGE JAPANESE : SUBS NL

YUJI SANO, AN EMPLOYEE IN AN UNSCRUPULOUS COMPANY, RECEIVES A NOTIFICATION INFORMING HIM THAT HE CAN NOW GO TO ANOTHER WORLD. HE WILL HENCEFORTH EXERCISE THE PROFESSION OF TRAINER OF MONSTERS. IF THIS NEW PROFESSION SEEMS SIMPLE AT FIRST GLANCE, HE ONLY MANAGES TO TAME A FEW SLIMES. HOWEVER, THANKS TO THE SPECIAL ABILITY OF ONE OF THEM, HE MANAGES TO DECIPHER AN OLD GRIMOIRE GRANTING HIM THE CLASS OF SCHOLAR: HE THUS OBTAINS AN IMMENSE POWER WHICH MAKES HIM THE MOST POWERFUL MAN OF THIS NEW WORLD. !



# NARUTO

## COMPLETE SERIES

- FORMAT 220 EPS A 24 MIN : HD : 9+ : PY2002- 2007
- IMDB RATING 8.4 : NINJA'S, SHONEN, ADVENTURE, MARTIAL ARTS, FANTASY
- SPOKEN LANGUAGE JAPANESE : SUBS NL

THE STORY BEGINS IN THE HIDDEN VILLAGE OF KONOHA, WHERE LIVES NARUTO, THE WORST RASCAL OF THE NINJA ACADEMY. THE FAVORITE PASTIME OF THE ONE WHO DREAMS OF BECOMING THE NEW HOKAGE IS TO DO THE FOUR HUNDRED BLOWS. BUT TO BECOME A REAL NINJA, THE ROAD IS LONG AND FULL OF PITFALLS...



# NARUTO SHIPPUDEN **COMPLETE SERIES**

- FORMAT 500 EPS A 24 MIN : HD : 9+ : PY2007- 2017
- **IMDB RATING 8.7** : NINJA'S, SHONEN, ADVENTURE, MARTIAL ARTS, FANTASY
- SPOKEN LANGUAGE JAPANESE : SUBS NL

NARUTO IS BACK! AFTER TWO AND A HALF YEARS OF TRAINING WITH JIRAIYA, HE FINDS HIS COMRADES FROM THE NINJA ACADEMY AS WELL AS HIS TEACHERS FROM KONOHA. ALL HAVE EVOLVED, INCLUDING THE SUNA VILLAGE NINJAS. ONLY KAKASHI SEEMS TO HAVE STAYED TRUE TO HIMSELF. ALAS, THE REUNION IS SHORT-LIVED. GAARA, WHO HAS RECENTLY BECOME KAZEKAGE OF HIS VILLAGE, IS THREATENED. EVERYTHING SUGGESTS THAT THE AKATSUKI WAS BEHIND THE ATTACK, BUT FOR WHAT PURPOSE?



# NARUTO : ROCK LEE THE ADVENTURES OF A BUDDING NINJA - **COMPLETE SERIES**

- FORMAT 51 EPS A 24 MIN : HD : 9+ : PY2012- 2013
- IMDB RATING 7.6 : NINJA'S, SHONEN, ADVENTURE, MARTIAL ARTS, FANTASY
- SPOKEN LANGUAGE JAPANESE : SUBS NL

ROCK LEE, THE BUSHY-BROWED NINJA APPRENTICE, HAS ONLY ONE GOAL: TO BECOME A GREAT NINJA... UNFORTUNATELY FOR HIM, HE CAN'T USE NINJUTSU OR GENJUTSU! DESPITE THIS, HE TRAINS VERY HARD IN TAIJUTSU UNDER THE GUIDANCE OF MASTER GAÏ, AND SURROUNDED BY HIS COMPANIONS TENTEN AND NEJI AS WELL AS HIS COMRADES FROM THE HIDDEN VILLAGE OF KONOHA. FOLLOW THE DELIRIOUS DAILY LIFE OF THE ONE WHO CALLS HIMSELF "THE RESPLENDENT JADE BEAST OF THE HIDDEN VILLAGE OF KONOHA"!



# OVERLORD SEASON 1

- FORMAT 13 EPS A 24 MIN : HD : 12+ : PY2015
- IMDB RATING 7.7 : DEMONS, ISEKAI, MONSTERS, ECCHI,  
• SEINEN, FANTASY
- SPOKEN LANGUAGE JAPANESE : SUBS NL

WE ARE IN THE YEAR 2138. YGGDRASIL, THE FAMOUS HIT MMORPG IS ABOUT TO CLOSE. MOMONGA, THE FOUNDER OF THE GUILD WHOSE FAME IS NO LONGER TO BE DONE, WAITS ALONE FOR THE END OF THE GAME. HOWEVER, THE CLOSING TIME HAS PASSED, MOMONGA DOES NOT DISCONNECT AND THE NON-PLAYABLE CHARACTERS FIND THEMSELVES GRADUALLY OF A CONSCIOUSNESS...  
A NEW WORLD IS ABOUT TO MAKE ITS APPEARANCE.

# OVERLORD SEASON 2

- FORMAT 13 EPS A 24 MIN : HD : 12+ : PY2018
- IMDB RATING 7.7 : DEMONS, ISEKAI, MONSTERS, ECCHI,  
• SEINEN, FANTASY
- SPOKEN LANGUAGE JAPANESE : SUBS NL

SINCE ARRIVING IN A NEW WORLD, AINZ OOAL GOWN HAS TAKEN HIS ROLE AS RULER OF THE GREAT TOMB OF NAZARICK VERY SERIOUSLY. HE ALSO BUILDS A SOLID REPUTATION TO HIS ALTER-EGO MOMON AS E-RANTEL'S STRONGEST ADVENTURER, WHILE GATHERING FUNDS AND INFORMATION. VERY SOON, HE EMBARKS ON THE MOST PERILOUS QUESTS THAT ONLY ADAMANTITE-CLASS ADVENTURERS CAN SURVIVE. AFTER A BASILISK IS DEFEATED, AINZ DECIDES TO RETURN TO NAZARICK AND ASKS ALBEDO FOR A FULL REPORT OF THE SITUATION...



# OVERLORD SEASON 3

- FORMAT 13 EPS A 24 MIN : HD : 12+ : PY2019
- IMDB RATING 7.7 : DEMONS, ISEKAI, MONSTERS, ECCHI,  
• SEINEN, FANTASY
- SPOKEN LANGUAGE JAPANESE : SUBS NL

THE ADVENTURES OF AINZ OOAL GOWN CONTINUE ON THE PLAINS OF E-RANTEL. AS THE GREAT RULER OF NAZARICK, AINZ OOAL GOWN EXTENDED HIS HOLD IN NEARBY REGIONS BY CONTROLLING THE NATIVES AND THE LOCAL UNDERWORLD. HOWEVER, HIS RECENT EXPLOITS ARE ATTRACTING THE ATTENTION OF THE POWERFUL OF THIS WORLD. WHETHER AS AINZ OOAL GOWN, THE MYSTERIOUS MAGE, OR MOMON, THE HERO OF DARKNESS, THE LORD OF NAZARICK WILL HAVE TO DO EVERYTHING TO SOLVE THIS SITUATION



# OVERLORD SEASON 4

- FORMAT 13 EPS A 24 MIN : HD : 12+ : PY2022
- IMDB RATING 7.7 : DEMONS, ISEKAI, MONSTERS, ECCHI,  
• SEINEN, FANTASY
- SPOKEN LANGUAGE JAPANESE : SUBS NL

AINZ OOAL GOWN, HAVING ESTABLISHED HIS DOMINATION, PLANS TO FOUND A KINGDOM WHERE ALL RACES COULD LIVE TOGETHER IN HARMONY. HOWEVER, THIS RISE IN POWER IS BADLY PERCEIVED BY THE OTHER LEADERS WHO CLOSELY MONITOR THE EVOLUTION OF NAZARICK. WILL AINZ OOAL GOWN MANAGE TO MAINTAIN HIS AUTHORITY, DESPITE THE PLOTS FOMENTED AGAINST HIS NATION?



# PRIDE OF ORANGE SERIES S.1

- FORMAT 12 X 24 MIN : HD : 12+ : PY2023
- IMDB RATING 6.7 : COMPETITION, SPORT , SHOJO, HOCKEY
- SPOKEN LANGUAGE JAPANESE : SUBS NL
- THE GIRLS OF THE EMBROIDERY CLUB OF A COLLEGE IN NIKKÔ SET THEMSELVES A NEW CHALLENGE: TO PARTICIPATE IN AN ICE HOCKEY SESSION ORGANIZED BY THE LOCAL TEAM, THE DREAM MONKEYS. IF THEY JUST WANT TO HAVE A GOOD DAY, THE LOCAL COACH, MEANWHILE, INTENDS TO RECRUIT AS MANY PEOPLE AS POSSIBLE!



# SEKAI-ICHI HATSUKOI SERIES S.1-2

- FORMAT 24 X 24 MIN : HD : 12+ : PY2023
- IMDB RATING 7.6 : JOSEI, LGBTQIA, COMEDY, ROMANCE
- SPOKEN LANGUAGE JAPANESE : SUBS NL

HIRED BY MARUKAWA BOOKS, RITSU ONODERA FINDS HIMSELF HAVING TO WORK IN THE DEPARTMENT OF MANGA FOR GIRLS WHEN HE KNOWS NOTHING ABOUT THE SUBJECT. TO MAKE MATTERS WORSE IN HIS SITUATION, RELATIONS WITH HIS EDITOR-IN-CHIEF, A FORMER LOVER, PROMISE TO BE DELICATE...



# スパイ教室

SPY ROOM

## SPY CLASSROOM SERIES S.1-2

- FORMAT 24 X 24 MIN : HD : 12+ : PY2023
- IMDB RATING 5.7 : ESPIONAGE, SEINEN, UNDERCOVER, ACTION, COMEDY
- SPOKEN LANGUAGE JAPANESE : SUBS NL

IN A WORLD WHERE COUNTRIES HAVE BEEN ENGAGED IN A SHADOW WAR SINCE A DEVASTATING MILITARY CONFLICT, KLAUS, A BRILLIANT SPY, CREATES THE ORGANIZATION "LIGHTS": THIS ONE AIMS TO CARRY OUT QUALIFIED MISSIONS "IMPOSSIBLE", WHOSE MORTALITY RATE IS AROUND 90%. IN SEARCH OF NEW RECRUITS, THE YOUNG MAN SPOTS SEVEN YOUNG GIRLS, INCLUDING LILY TRAINED IN ONE OF THE MANY SPECIALIZED INSTITUTIONS IN THE COUNTRY. HAVING NO EXPERIENCE IN THE FIELD, HOWEVER, THEY WILL FIRST HAVE TO PROVE...



# THE EMINENCE IN SHADOW SERIES S.1

- FORMAT 20 X 24 MIN : HD : 16+ : PY2022
  - IMDB RATING 7.9 : ISEKAI, SEINEN, DEMONS, ACTION,ADVENTURE
  - SPOKEN LANGUAGE JAPANESE : SUBS NL
- 
- UNDER HIS APPEARANCE OF A HIGH SCHOOL STUDENT WITHOUT HISTORY, CID KAGENOUE ASPIRES TO BECOME THE ONE WHO WILL PULL THE STRINGS WITHIN THE LARGEST SECRET ORGANIZATIONS. UNFORTUNATELY, A TRAGIC ROAD ACCIDENT PREVENTS HIM FROM REALIZING HIS PLAN. HOWEVER, WHEN HE WAKES UP, HE DISCOVERS THAT HE HAS BEEN REINCARNATED AS A MAN LEADING A REAL SECRET SOCIETY, SHADOW GARDEN, WHICH FIGHTS AGAINST THE CULT OF DIABOLOS. DETERMINED TO TAKE HIS ROLE SERIOUSLY, HE IS READY TO RECRUIT MEMBERS IN ORDER TO TAKE ADVANTAGE



- FORMAT 1000 + X 24 MIN : HD : 12+ : PY 1996 – CURRENT
- IMDB RATING 8.5 : ACTION, COMEDY , ADVENTURE
- SPOKEN LANGUAGE JAPANESE : SUBS NL
- 1E LICENTIE 150 EPS

SHINICHI KUDO WAS A BRILLIANT HIGH SCHOOL DETECTIVE UNTIL ONE DAY HE WAS TURNED INTO A CHILD BY A MYSTERIOUS BLACK ORGANIZATION. TAKING ON A NEW IDENTITY AS CONAN EDOGAWA TO PROTECT THOSE CLOSE TO HIM, CONAN NOW PURSUES THE BLACK ORGANIZATION IN HOPES OF FINDING THE CURE TO BRING HIM BACK TO HIS TEENAGE SELF.



# SAINT SAIYA SERIES 1.

- FORMAT 26 X 30 MIN : HD : 12+ : PY2009 -2012
- IMDB RATING 7.9 : ANIME, ACTION , ADVENTURE
  - SPOKEN LANGUAGE JAPANESE : SUBS NL

THREE ORPHANS WHO GREW UP TOGETHER MAKE A PACT TO MEET AGAIN. THAT FATED MEETING TURNS OUT TO BE A HOLY BATTLE. TAKING PLACE 250 YEARS BEFORE THE ORIGINAL SAINT SEIYA, THIS PREQUEL HAS BEEN PRAISED FOR ITS DYNAMICALLY ANIMATED FIGHT SCENES, AS WELL AS BEING ACCESSIBLE TO NEW FANS AND OLD ALIKE.



# YOWAMUSHI PEDAL

- FORMAT 38 X 24 MIN : HD : 12+ : PY2013
- IMDB RATING 7.7 : COMEDY, ACTION , ADVENTURE ,DRAMA
- SPOKEN LANGUAGE JAPANESE : SUBS NL

FRESHMAN OTAKU SAKAMICHI IS HEARTBROKEN TO FIND THE ANIME CLUB HE WANTED TO JOIN IS NO MORE. HE NEVER EXPECTED TO JOIN THE CYCLING TEAM INSTEAD. AND HE CERTAINLY NEVER EXPECTED TO DISCOVER HE HAS A TALENT FOR RACING! MAYBE HE CAN EVEN CONVINCHE HIS NEW FRIENDS TO WATCH ANIME WITH HIM TOO...



Format 54 x 30 min : HD : 6+ :  
PY1999



IMDB rating 7.9 : Action,Adventure



Spoken Language Japanese : subs NL



Format 50 x 30 min : HD : 6+ :  
PY2000



IMDB rating 7.4 : Action,Adventure



Spoken Language Japanese : subs NL



Format 51 x 30 min : HD : 6+ :  
PY2001



IMDB rating 7.6 : Action,Adventure



Spoken Language Japanese : subs NL



Format 50 x 30 min : HD : 6+ :  
PY2002



IMDB rating 6.9 : Action,Adventure



Spoken Language Japanese : subs NL



Format 48 x 30 min : HD : 6+ :  
PY2006



IMDB rating 6,2 : Action,Adventure



Spoken Language Japanese : subs NL



Format 79 x 25 min : HD : 6+ :  
PY2010



IMDB rating 7.0 : Action,Adventure



Spoken Language Japanese : subs NL



Format 98 x 24 min : HD : 12+ :  
PY2009



IMDB rating 8.3 : Action,Adventure



Spoken Language Japanese : subs NL



Format 69 x 25 min : HD : 12+ :  
PY2014



IMDB rating 8.3 : Action,Adventure



Spoken Language Japanese : subs NL



NEW ANIME SERIES  
UNDER OFFER

SERIES



# INUYASHA



Format 7 seasons in total 167 eps x  
27 min : HD : 12+ : PY2000 - 2004



IMDB rating 7.9 : Action,Adventure



Spoken Language Japanese : subs  
NL/UK



# MY HERO ACADEMIA



Format season 1 in total 13 x 24 min  
: HD : 12+ : PY 2016



IMDB rating 8.3 : Action,Adventure



Spoken Language Japanese : subs  
NL/UK



# MY HERO ACADEMIA



Format season 2 in total 26 x 24 min  
: HD : 12+ : PY 2017



IMDB rating 8.3 : Action,Adventure



Spoken Language Japanese : subs  
NL/UK

# BUSINESS PLAN - STRATEGY

- BY ESTABLISHING PERISCOOP ANIME MID-2020 AS A BRAND – THE ANIME FAN KNOWS WHO TO FOLLOW FOR IT'S NEW FILMED ANIME CONTENT
- SINCE 2020 WE ARE RELEASING 4 BRAND NEW ANIME FILM FRANCHISES EVERY YEAR
- ALL FILMS ARE THEATRICALY RELEASED AND VISIBLE ON ALL TVOD PLATFORMS ( PATHE THUIS , ITUNES, GOOGLE PLAY) AND THE MAJOR STREAMERS LIKE – AMAZON PRIME , VIAPLAY AND VIDEO LAND
- WE ARE IN CONTACT WITH OUR FANBASE BY ATTENDING ALL COMICON SHOWS AS AN EXHIBITOR, INTRODUCING NEW TITLES , HANDING OUT MERCHANDISE MATERIAL/ POSTERS AND SELL BLURAY'S OF OUR LINE UP
- WE HAVE A MONTHLY CONSULT WITH OUR JAPANESE FRIEND AND CHIEF EDITOR OF ANIMATION WEEK – HIDEKI NAGAISHI – TO SEE WHAT NEW TRENDS WE CAN EXPECT AND KEEP IN TOUCH WITH OUR FANBASE TROUGH THE ANIMATION – WEEK ONLINE PLATFORM [HTTPS://ANIMATION-WEEK.COM](https://animation-week.com)
- WE HAVE SET UP MEETINGS WITH ALL STREAMERS TO INVEST THEIR NEEDS AND INFORM THEM ABOUT THE UNIQUENESS OF OUR ANIME FILMS IN THEIR SEARCH TO BE ATTRACTIVE FOR A NEW AUDIENCE

# BUSINESS PLAN - STRATEGY

- CREATING THE BIGGER AUDIENCE WE HAVE TO MAKE SURE THAT ANIME WILL BE AVAILABLE – EVERYWHERE – ALL THE TIME – AND AS A SERIES TO BE COMPLETE AND LOKALIZED
- A MIX OF OLD & NEW ANIME SERIES ON A FREE FOR USE PLATFORM AS YOU-TUBE WILL ATTRACTED NEW AUDIENCES AND ACCELLARATE OUR BUSINESS MODELS ON FAST TV – SVOD –TVOD AND CUSTOMIZED CHANNELS
- WE HAVE SET UP MEETINGS WITH ALL JAPANESE ANIME STUDIO'S AND INTERNATIONAL SALES ORGANISATIONS LIKE TOEI – ANIMAPLEX- MEDIATOON – NIPPON TV –TOHO – ADK -TV TOKYO – FUJI CORP. , ADN ETC ...TO MAKE THEM AWARE OF OUR LOKAL MARKET, OPPORTUNITIES & PLANS TO SEE IF THEY ARE OPEN FOR A CONTENT PARTNERSHIP.
- TODAY, ALL THE NAMED CONTACTS ARE VERY EXCITED AND COOPERATIVE TO HELP US CREATING THE ANIME SERIES MARKET , EXPANDING THEIR BUSINESS & PROPERTIES AMONGST THE BENELUX AUDIENCES

# BUSINESS PLAN – PARTNERS

- **OD MEDIA** [HTTPS://ODMEDIA.COM](https://odmedia.com) , WILL BE OUR TECHNICAL PARTNER FOR THE BENELUX, THEY HAVE ACCES TO ALL PLATFORMS AS BEING THE PREFERRED TECHNICAL SUPPLIER
- **AMAZON PRIME** , TOGETHER WITH AMAZONE WE WILL BUILD THE SVOD ANIME SHOP IN SHOP FORMULA THROUGH THEIR PLATFORM
- **EXPOZA**, [HTTPS://WWW.EXPOZA.COM/#HOME](https://www.expoza.com/#home) WILL BE OUR TECHNICAL AND STRATEGIC PARTNER FOR OUR GO-ANIME.NL AND GO-ANIME.VL - YOU TUBE AVOD PLATFORMS
- **VIDEOLAND**, [HTTPS://WWW.VIDEOLAND.COM/NL/](https://www.videoland.com/nl/) WILL BE OUR PREFERRED SVOD PARTNER FOR THE LAUNCH OF ALL NEW SERIES, THEY ARE THE BIGGEST LOKAL STREAMER IN HOLLAND , WE HOPE TO WORK ON THE SAME WAY WITH STREAMZ, THE BIGGEST LOKAL STREAMER IN FLANDERS ( WORK IN PROGRESS)
- **SAMSUNG** WILL BE OUR PARTNER FOR FAST TV , THEY ARE THE MARKETLEADER IN SELLING SMART TV'S AND ALL SMART TV'S DELIVERED FROM 2016 ON HAVE THE SAMSUNG PLUS APP FOR FAST TV PRE-INSTALLED
- WE ARE WORKING CLOSELY WITH **ADN FRANCE** [HTTPS://ANIMATIONDIGITALNETWORK.FR](https://animationdigitalnetwork.fr) TO LEARN FROM THEIR BEST PRACTICES, CONTENT CHOICES AND SUCCESSES TO ALSO MAKE ANIMEE AVAILABLE IN ALL BENELUX HOUSEHOLD

# BUSINESS PLAN – PARTNER OD MEDIA

od media

HOME SERVICES CASES NEWS FAQ SPECS JOBS CONTACT US

Reach a **global audience** and **maximise your revenue**

TAKE CONTROL OF YOUR CONTENT

We provide **aggregation and tech services** for our partners and work with **global platforms**

prime video Google Play Apple PREFERRED PARTNER N DISNEY+ YouTube CERTIFIED

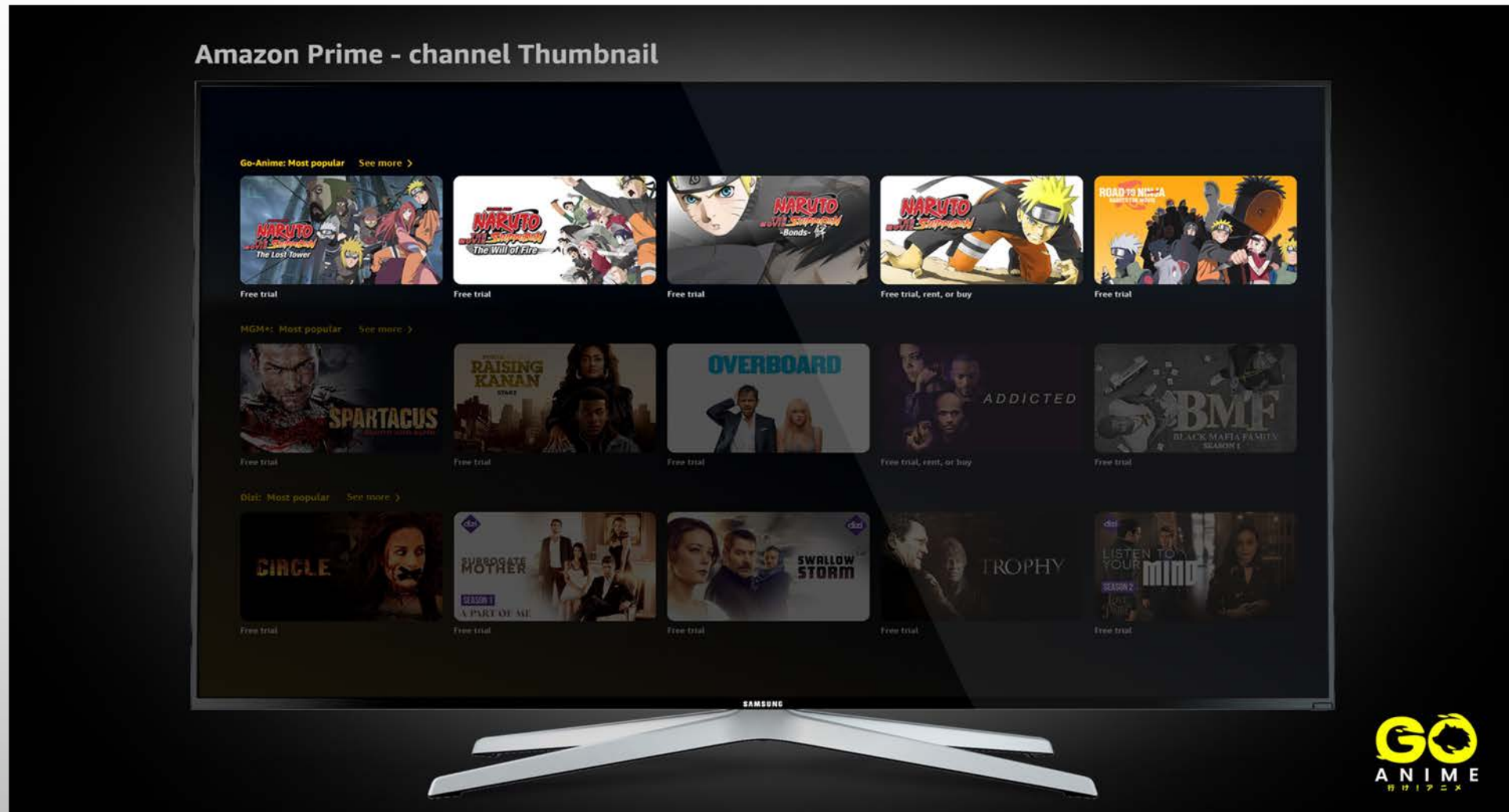
# BUSINESS PLAN – PARTNER AMAZONE PRIME SHOP



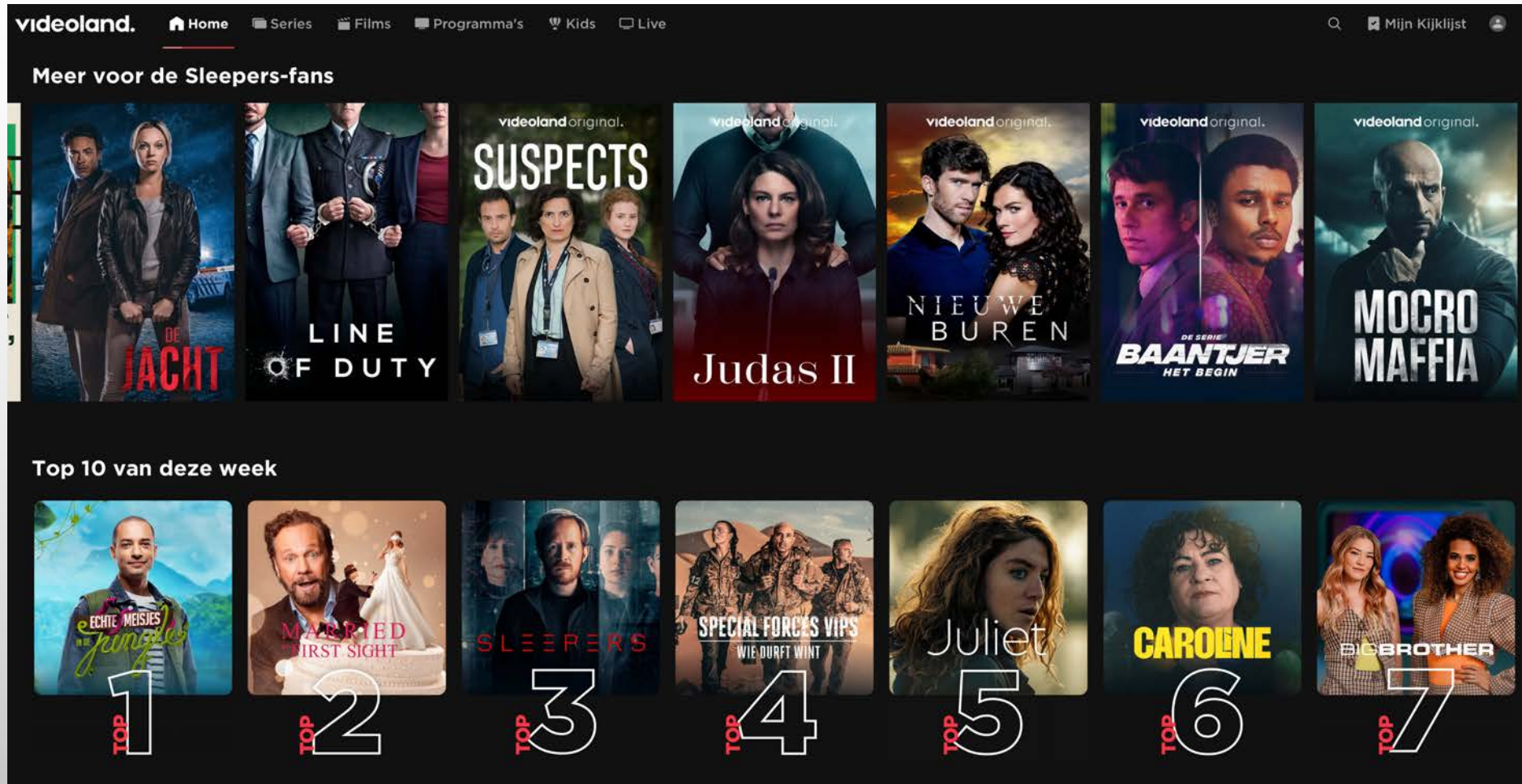
# BUSINESS PLAN – PARTNER AMAZONE PRIME SHOP



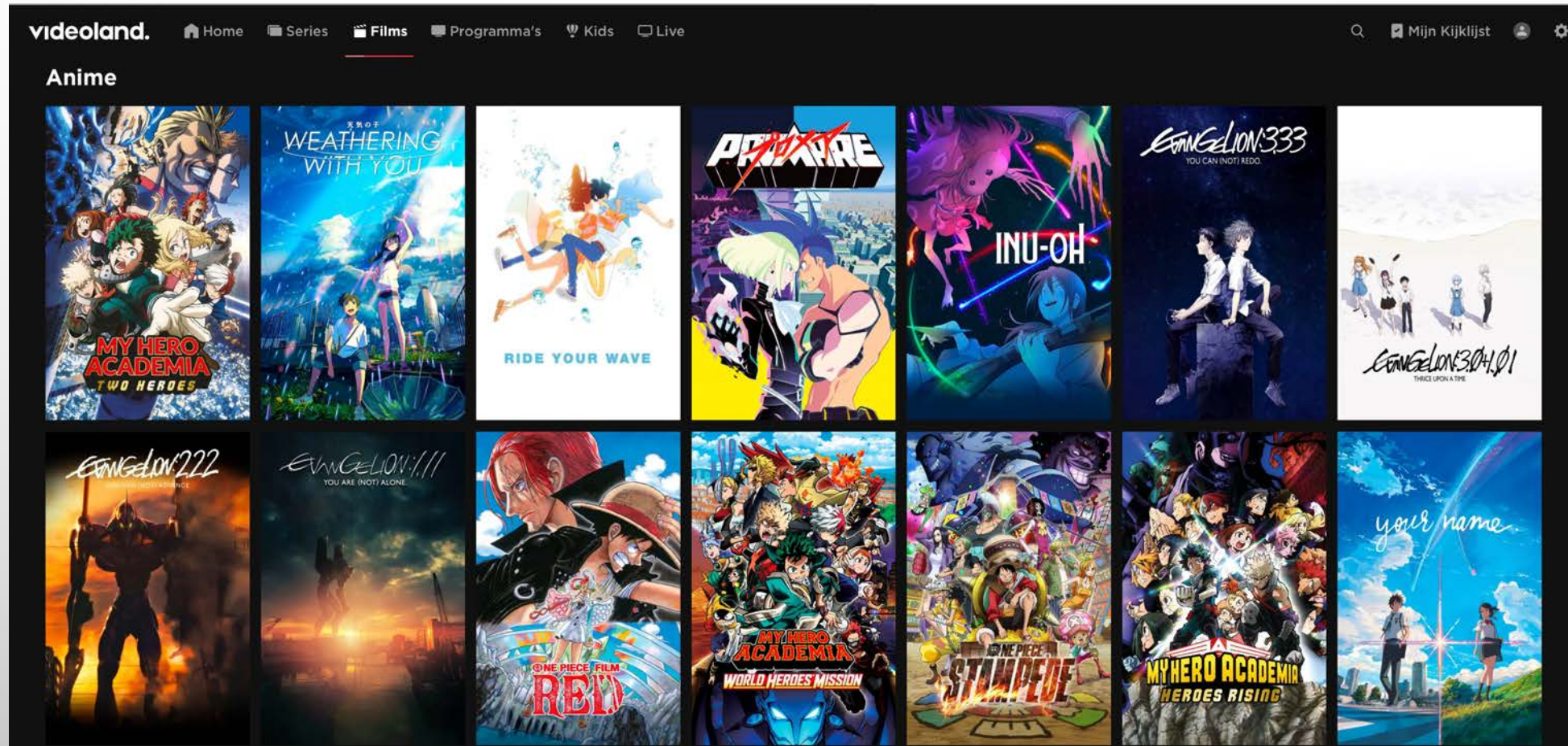
# BUSINESS PLAN – PARTNER AMAZONE PRIME SHOP



# BUSINESS PLAN – PARTNER VIDEOLAND (RTL)



# BUSINESS PLAN – PARTNER VIDEOLAND (RTL)



# BUSINESS PLAN – PARTNER SAMSUNG FAST

SMART TV [Alle smart tv's bekijken](#)

Highlights Smart Hub & Apps Samsung TV Plus Smart Home Telefoon verbinden SolarCell Remote Apple TV-app & AirPlay

Samsung TV Plus

## Gratis televisie. Geen verplichtingen.

Samsung TV Plus is jouw bron voor entertainment met een vleugje van het buitengewone - gratis. Ontvang duizenden films en tv-programma's, live en op aanvraag, zonder verplichtingen.



Kijk op jouw Samsung TV

# BUSINESS PLAN – PARTNER SAMSUNG FAST

SMART TV Alle smart tv's bekijken

Highlights Smart Hub & Apps Samsung TV Plus Smart Home Telefoon verbinden SolarCell Remote Apple TV-app & AirPlay

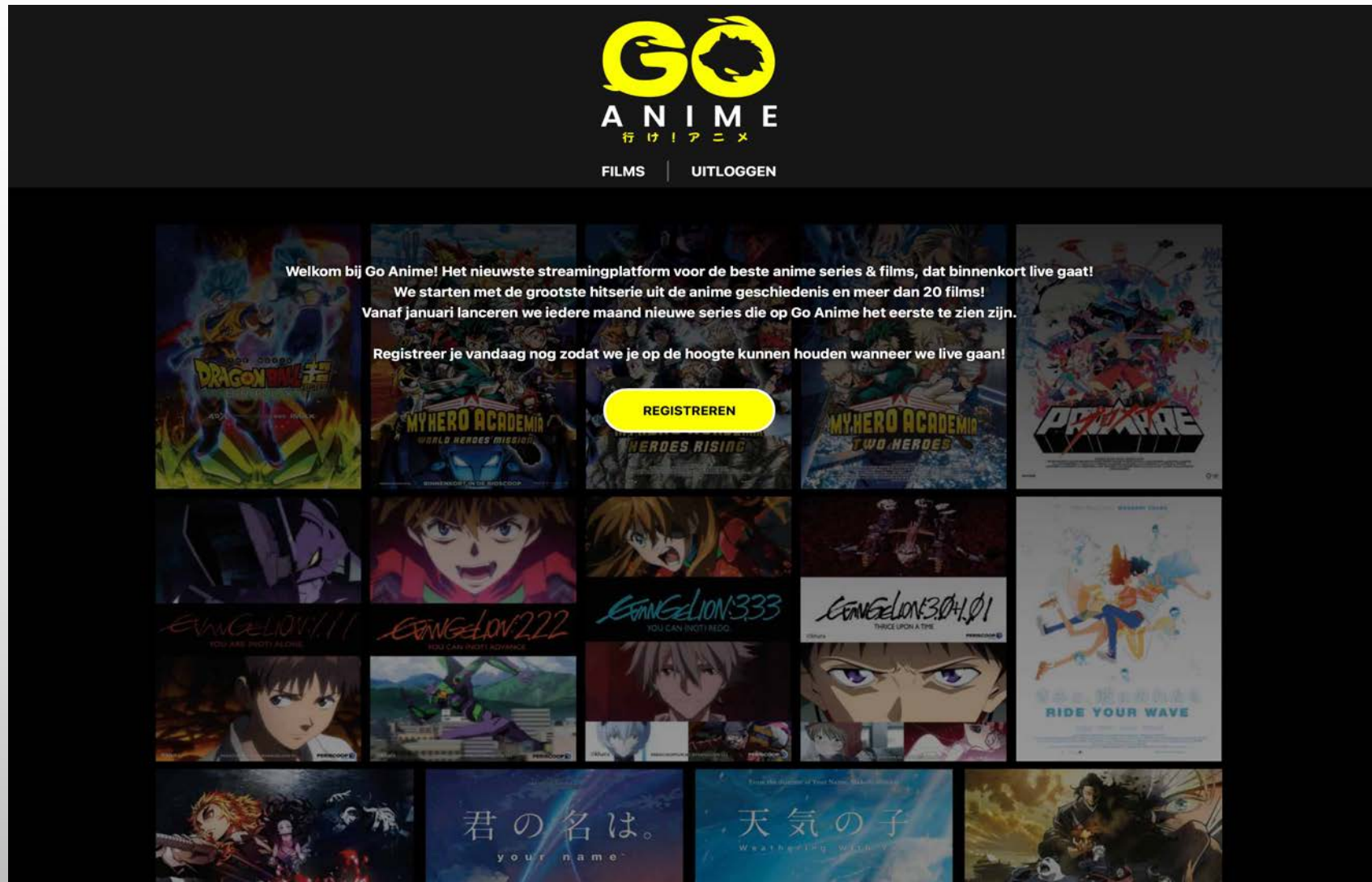
Wat is er trending deze maand.

 **Top Gear**  **XITE**  **FIFA+**  **Studio 100**

 **Gewoon**  **aanzetten** 

 **Samsung TV Plus**

# BUSINESS PLAN — OWNED PLATFORM GOANIME



# BUSINESS PLAN — OWNED PLATFORM GOANIME

The screenshot displays the GOANIME website interface. At the top center is the logo, which consists of the word "GO" in a stylized yellow font with a black outline, followed by "ANIME" in a white sans-serif font. Below the logo is the Japanese phrase "行け!アニメ" (Ike! Anime) and two navigation links: "FILMS" and "UITLOGGEN".

The main content area features a grid of anime titles, each with a cover image and a caption below it:

- DRAGON BALL SUPER: BROLY** (Cover: Broly and Goku)
- EVANGELION:1.11 YOU ARE (NOT) ALONE** (Cover: Shinji and Rei)
- EVANGELION:2.22 YOU CAN (NOT) ADVANCE** (Cover: Shinji and Rei)
- EVANGELION:3.0+1.01 THRICE UPON A TIME** (Cover: Shinji and Rei)
- EVANGELION:3.33 YOU CAN (NOT) REDO** (Cover: Shinji and Rei)
- INU-OH** (Cover: Inu-oh)
- MY HERO ACADEMIA: HEROES RISING** (Cover: Deku and other heroes)
- MY HERO ACADEMIA: TWO HEROES** (Cover: Deku and Todoroki)
- MY HERO ACADEMIA: WORLD HEROES MISSION** (Cover: Deku and other heroes)
- NARUTO SERIES** (Cover: Naruto and other characters)

At the bottom of the grid, the first row of the next row is visible, showing covers for "NARUTO THE MOVIE: THE WILL OF FIRE", "NARUTO THE MOVIE: THE LAST", "NARUTO THE MOVIE: BORNE", and "NARUTO THE MOVIE: THE FLOODGATES OF HEAVEN".

# BUSINESS PLAN – MARKETING

- BY MAKING THE ANIME CATALOGUE SERIES CONTENT AVAILABLE SIMULTANESLY ON FAST TV– SVOD – SHOP IN SHOP AND AVOD PLATFORMS AND TO MAKE USE / SUPPORTING THE PLATFORM UNIQUE MARKETING TOOLS, WILL STRENGHTEN THE GENERIK CAMPAIN AND MAKE NEW CONSUMERS AWARE THE ANIME VIRUS IS YET TO BE RELEASED
- WE WILL BUY 3 NEW SERIES FOR SIMULTANIUS RELEASE WITH JAPAN/ EUROPE 'S OTHER STREAMING PLATFORMS TO MAKE SURE THE AUDIENCE WILL RETURN ON THE MOMENT OF AVAILIBILITY , MAKING THEM A MEMBER OF THE PROPERTY
- VIDEOLAND NEWSLETTER FOR MEMBERS ( 800K HOUSEHOLDS) - TAKE OVER THEIR LANDING PAGE – AS MEMBER OF RTL THEY HAVE A LOT OF COMMERCIAL TIME TO SPEND ON THEIR LINEAIR TV CHANNELS
- AMAZONE PRIME ( 1.600K HOUSEHOLDS) WILL MAKE A DEDICATED ANIME WEEKLY NEWSLETTER THE MOMENT THE PLATFORM IS LIVE, THEY WILL ALSO USE PREROLLS ON THEIR AMAZON PRIME LANDING PAGE IN THE LAUNCH MONTH

# BUSINESS PLAN – MARKETING

- SAMSUNG PLUS IS WORKING ON A SERIOUS MARKETING CAMPAIGN ( BUDGET OF 2 MILLION) TO PROMOTE THEIR FAST CHANNEL , IN THESE ONLY ADVERTISEMENTS THEY WILL FREQUENTLY USE FRAGMENTS OF OUR NEW ANIME SERIES
- EXPOZA ( AVOD PARTNER )WILL WORK OUT A SOCIAL MEDIA CAMPAIN WITH THE USE OF GOOGLE ADDWORDS AND THEIR ADVERTISERS
- WE ARE DEVELOPING A NEW PERISCOOP ANIME IDENT TO USE BEFORE NEW FILMED ANIME THEATRICAL RELEASES , MAKING THE CONSUMER AWARE OF OUR NEW PLATFORM URL'S
- FILMINC , OUR MARKETING BUREAU GUIDING ALL OUR NEW ANIME THEATRICAL RELEASES WILL SEND OUT A NEWESLETTER TO THEIR DATABASE OF ANIME LOVERS ( 30K) OUR PR AGENCY IS WORKING CLOSELY WITH OUR MARKETEERS ON A PLAN FOR INSTAGRAM, FACEBOOK AND TIKTOK , TO BE FILLED IN FURTHER IN DETAIL WHEN ALL SERIES NAMES ARE IN PLACE
- DURING THE WINTER EDITION OF COMICON IN UTRECHT ALL VISTORS WILL BE IN CONTACT WITH OUR NEW PLATFORMS , WE WILL HAVE A NICE STAND SHOWING A TRAILER OF ALLE NEW SERIES AND OUR URL WILL BE ADVERTISED ON THEIR ENTREE TICKETS

# BUSINESS PLAN – EXPECTATIONS

- WE PLAN TO INVEST AN AMOUNT OF € 683.250 IN THE FIRST TWO YEARS , WHICH IS BASED ON A BUYING MODEL , EXPLOITING 800 -1500 HOURS OF CONTENT
- IF WE CAN MAKE PARTNERSHIPS WITH LICENCORS AND WORK ON A REVENU SHARE MODEL WITH A SMALL MG , THE NUMBER OF CONTENT HOURS WILL BE MUCH HIGHER AND THE NUMBERS ARE LIKELY HIGHER
- THE REVENU STREAM OF VIDEO LAND IS QUARANTEED, STREAMZ ( BELGIUM) IS STILL A WORK IN PROGRESS
- AFTER TWO YEARS OF BUILDING WE EXPECT TO HAVE A SMALL REVENU PLUS / AND A RETURN OF OUR INVESTMENT
- IF THE INTRODUCTION OF THE ANIME SERIES BRAND WILL BE SUCCESFULL WE EXPECTED MORE STREAMERS TO COME ON BOARD
- WE WILL HAVE TO INVEST A MINIMUM OF €250K IN YEAR THREE , BUYING NEW CONTENT TO MAKE SURE TO KEEP THE PAYED MEMBERSHIP OF INTEREST ( PRIME SHOP AND STREAMERS)
- THE REVENU IS NETTO, ALL OPERATIONAL COSTS ARE SETTLED IN THE MODEL

# BUSINESS PLAN – TIMELINE/ ORGANISATION

- THE GOAL IS TO HAVE A SOFT LAUNCH OF THE AVOD / FAST PLATFORMS AT THE END OF JUNE AND JULY 2024
- SUMMER END '24 THE AMAZON PRIME SHOP WILL BE READY AND OPEN FOR NEW MEMBERS
- MEDIA CAMPAIGNING WILL BE WORKED OUT TAILORMADE FOR THE START OF EACH NEW PLATFORM
- OUR ANIMEE TASKFORCE COUNTS 7 FLEXIBLE AND EXPERIENCED PEOPLE , THE DAILY BASE IS FORMED BY SAN FU MALTHA – HEAD OF AQUISITION \* BRUNO FELIX –GENERAL MANAGER \* AURORA VAN DE VELDE – SUPPLY CHAIN \* JOS BONOUVRIE – SALES MANAGER \*CAMELIA ADLER – FINANCE \* BRAM ARTS– P.A. & ONLINE MARKETING SUPPORT \* JUSTINE KNIJN – THEATRICAL BOOKER \* FREDERIQUE ROOS – MARKETING & MEDIA SPECIALIST



**GO**  
**ANIME**  
行け！アニメ

**C**ontact - Bezoekadres

Arie Biemondstraat 111

1054 PD Amsterdam

Sales - [jos@periscoopfilm.nl](mailto:jos@periscoopfilm.nl)