



BORDERLESS
SWITCH to HOPE

Company Information



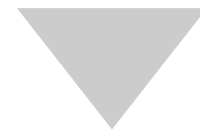
BORDERLESS
SWITCH to HOPE

Company Name	Borderless Japan Corporation
Headquarters	Fukuoka, Japan
Founder	Mr. Kazunari TAGUCHI Mr. Masayuki SUZUKI
Established	March 2007
Employees	252 (as of July 2025)
Capital	10 million yen



What is Borderless ?

BORDERLESS

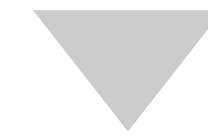


**All we do is
“Social Business”**

What is Borderless ?



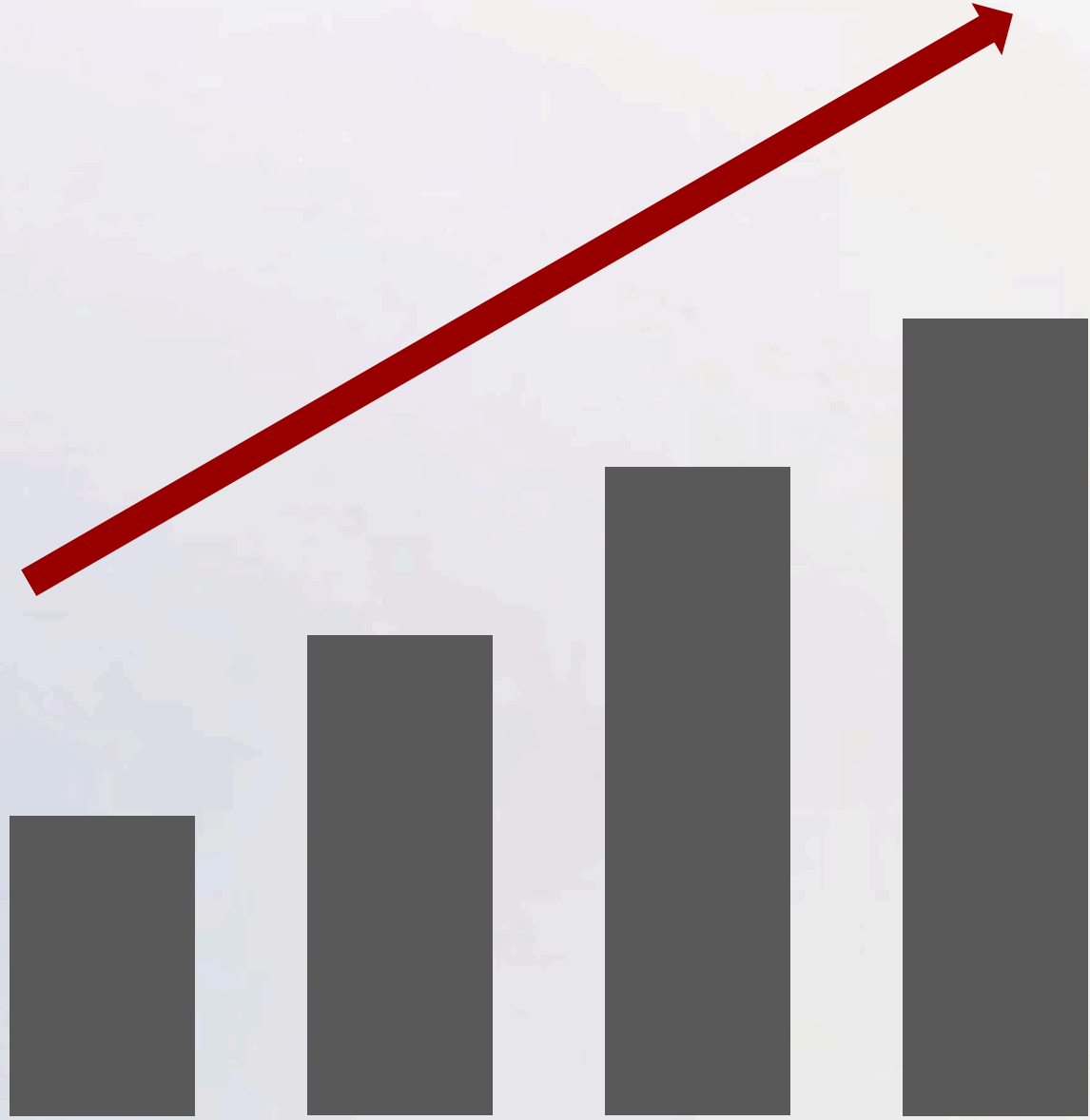
Social Business



Solving **Social Issues**
through **Business**

**10x Sales = 10x Better Society.
Design the model first, then start.**

Social Impact



Sales

This is our Social Business

We tackle the following challenges:

- Issues left behind by society because they were seen as not profitable.
- A structure where past business success models no longer tackle.

Our Commitment to Change:

• Social Impact:

Solving social issues to create a future where those affected can live with hope.

• Sustainability:

Creating self-reliant business models through imagination and creativity.

Rural Poverty

農村貧困

Addressing the issue of farmers who, in addition to having small farming areas, struggle with limited access to capital, resources, information, and markets, leading to low income and poverty.



BORDERLESS LINK

小規模農家の顧客数

15,000名

農業ワンストップサービスセンター

6箇所



BORDERLESS MYANMAR FERTILIZER

雇用創出

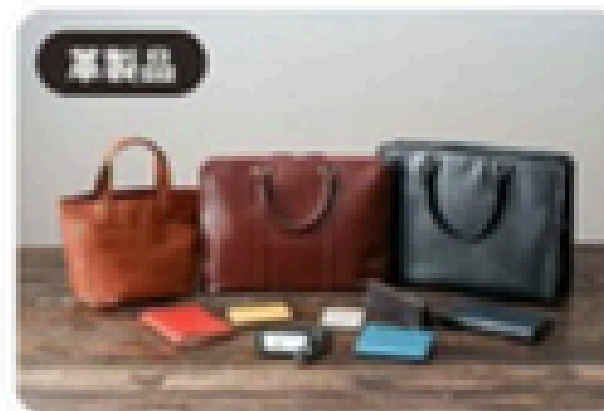
250名

化学肥料削減量

2,000t

Urban Poverty 都市貧困

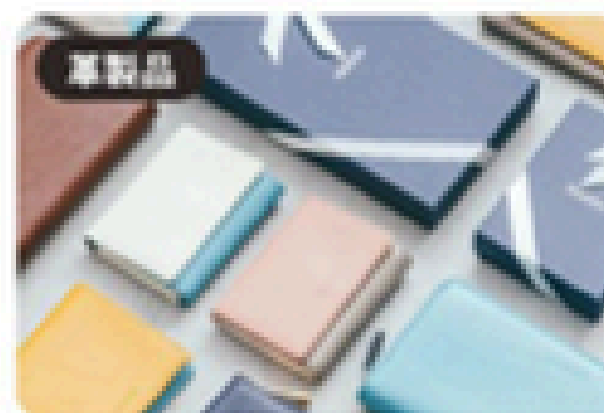
To build a society where producers, who cannot escape poverty due to low wages or disabilities, can continue pursuing their dreams and lives without giving up, and live a healthy and stable life.



LIB
LIFE IS BORENLESS

Bangladesh factory employment creation number

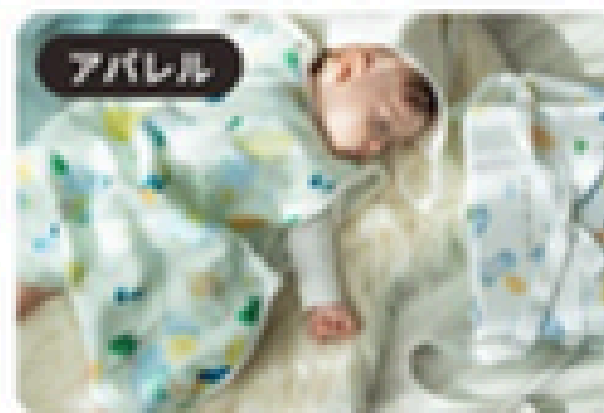
500人



CO JOGGO

Bangladesh factory employment creation number

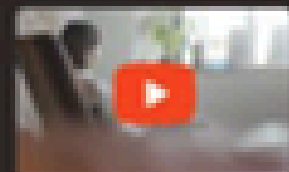
100人



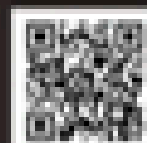
Haruulala
organic

Direct employment number

130人



LIBブランドムービー
公開中



Reuse & Recycle

資源循環

In today's world, where wasteful, one-way consumption has become a problem, we aim for a society where sustainable living is rooted in everyday life.



生ごみ削減量

1,137t



資源再循環量

188t



再流通点数

212,538点

Renewable Energy 自然エネルギー

Through 100% renewable energy retail and solar power generation projects utilizing residential rooftops, we move toward a society where renewable energy is the main power source.



電力切替によって減らすことができたCo2

12,960_t



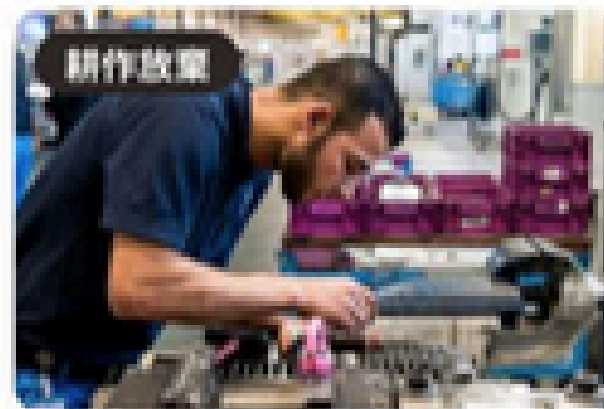
設置容量

2,424_{kW}

Refugees & Stateless People

避難民・無国籍

For people who, due to conflict or poverty, lack a place where they can live with peace of mind, we aim to create a society where they can have hope by providing them with work.



zeropc

累計雇用者数

7人

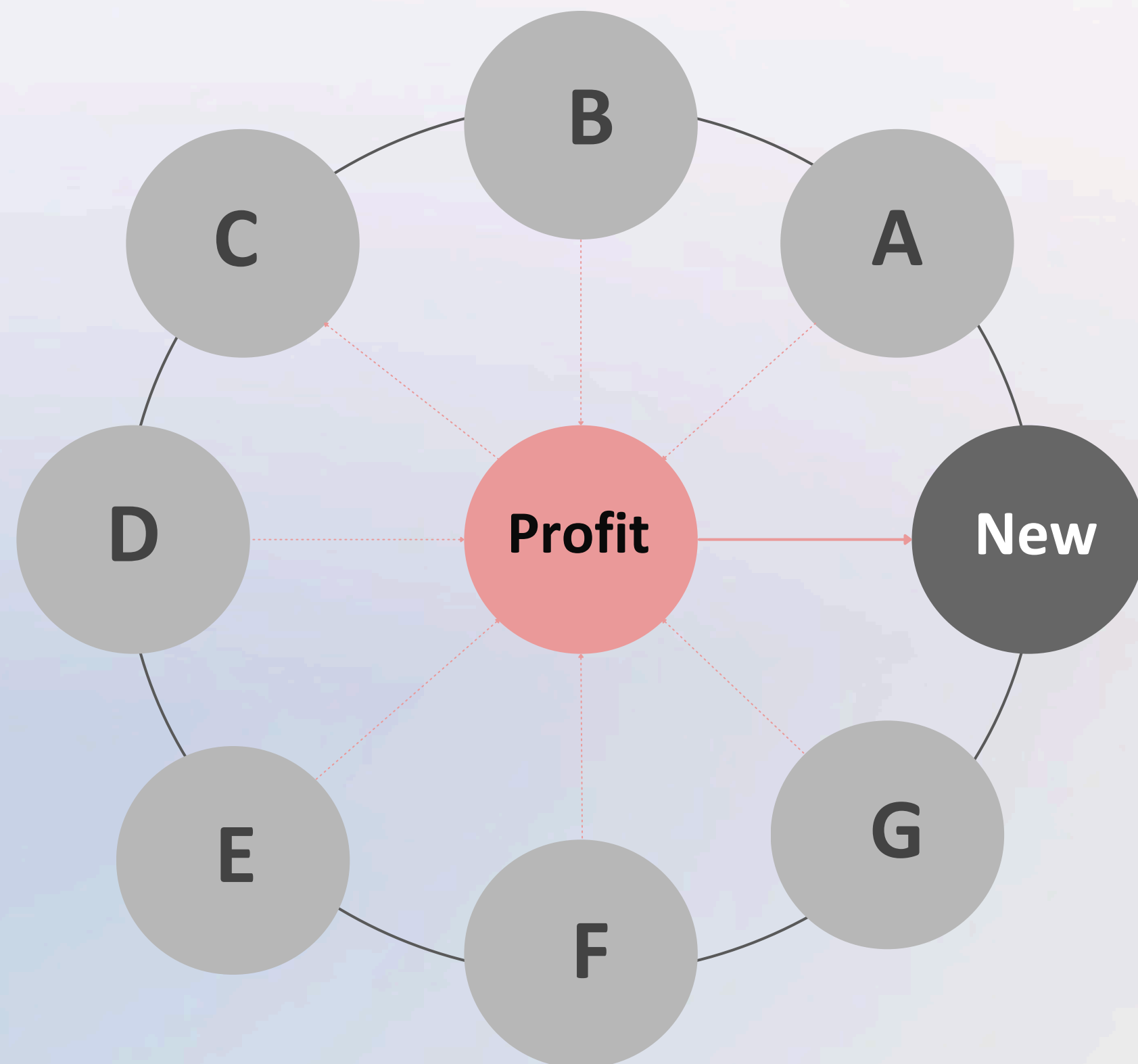


ANOSUPO アノサポ

国籍を取得した子どもの数

8人

The Borderless Ecosystem: A Platform for Social Good



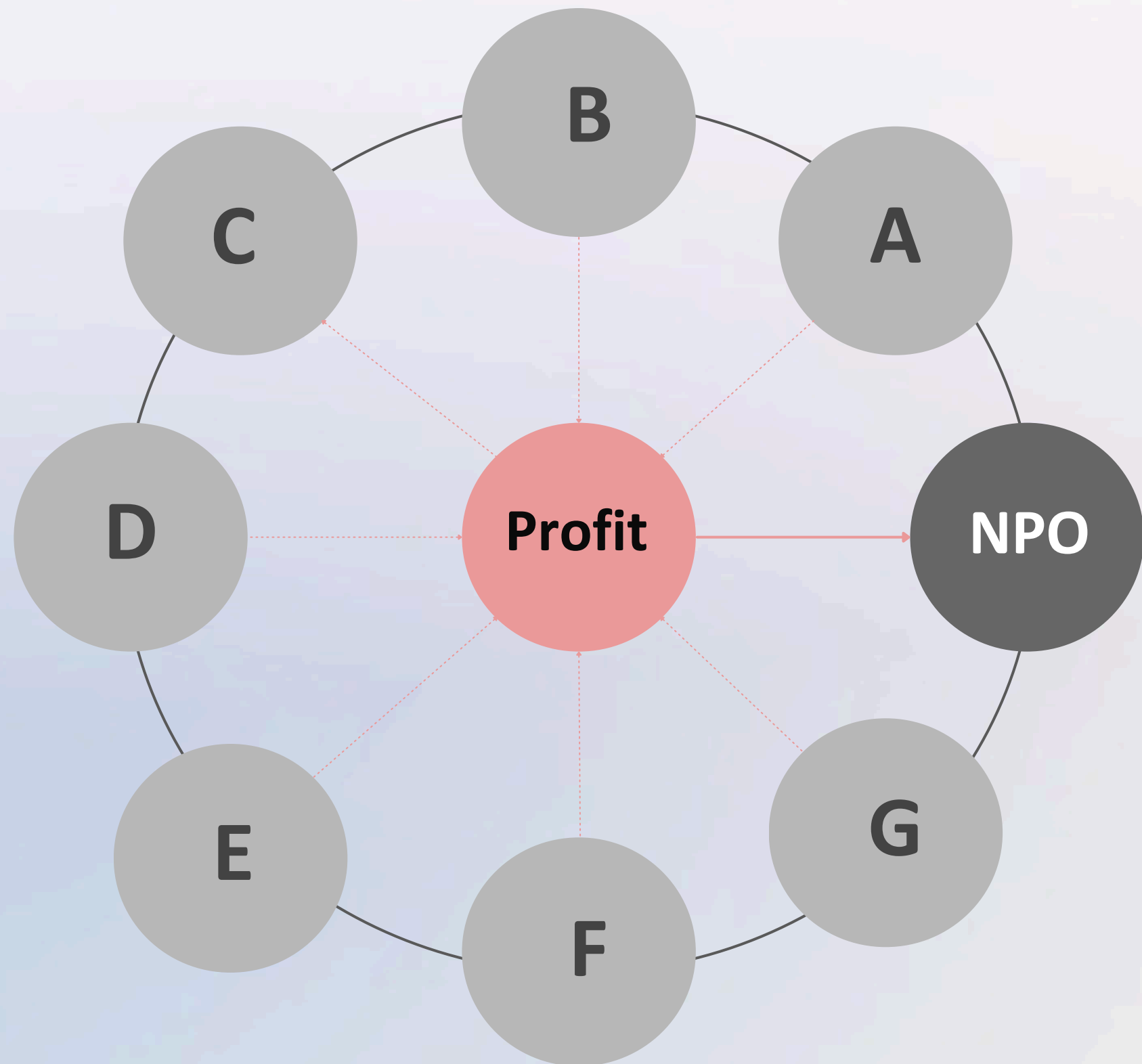
“ On Okuri ”

Pay it forward



**A portion of the profits is allocated
to support new social
entrepreneurs with capital.**

The Borderless Ecosystem: A Platform for Social Good



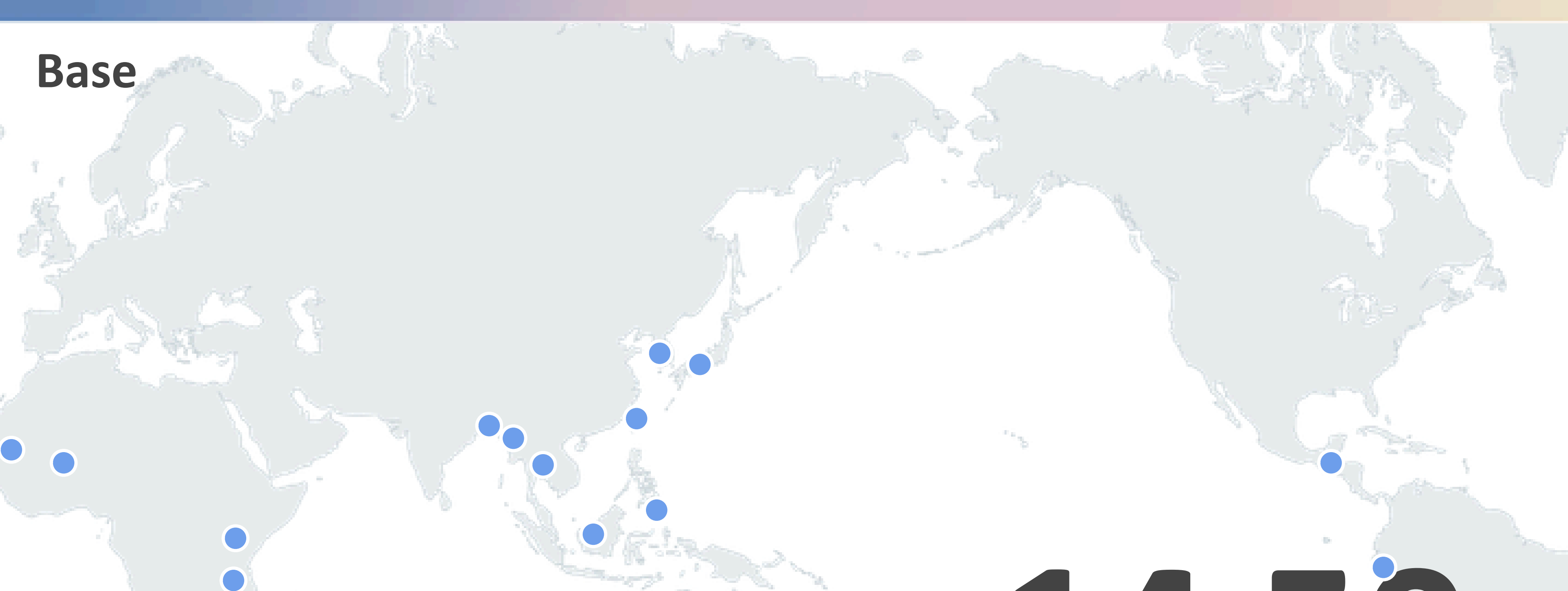
“Borderless Foundation”

Non profitable project



A portion of the profits is allocated to
new social activities.

Base



Japan	Fukuoka, Tokyo, Osaka, Miyazaki, Kanagawa etc
Asia	Bangladesh, Myanmar, South Korea, Taiwan, Philippines, Thai, etc
Africa	Senegal, Burkina Faso, Kenya, Tanzania
Latin America	Guatemala, Ecuador

14 **50**
countries businesses

Recruitment

We are seeking

“Business Development Professional”

with the ambition to become a **“Social Entrepreneur”**

Career path after joining Borderless

Year 1-2

From Year 2, depending on growth

Business Development (Mastery Phase)

Drive growth in existing businesses through marketing, sales, PM, etc. Refine and solidify your business development capabilities and mindset through high-level real-world execution.

(Focus: Japan)

Business Development (Global Expansion)

Expand social business models established within Borderless to your home country or overseas. Act as the "growth engine" to launch and accelerate new ventures with team members.

(Focus: Home Country / Overseas)

Social Entrepreneur (Regional Leadership)

Build a social business plan driven by your passion to solve social issues in your home country. Secure approval and lead the local entity as its representative, taking full ownership of the impact.

(Focus: Home Country)

Support System for Entrepreneurs in our group

Boost from Backup Studios

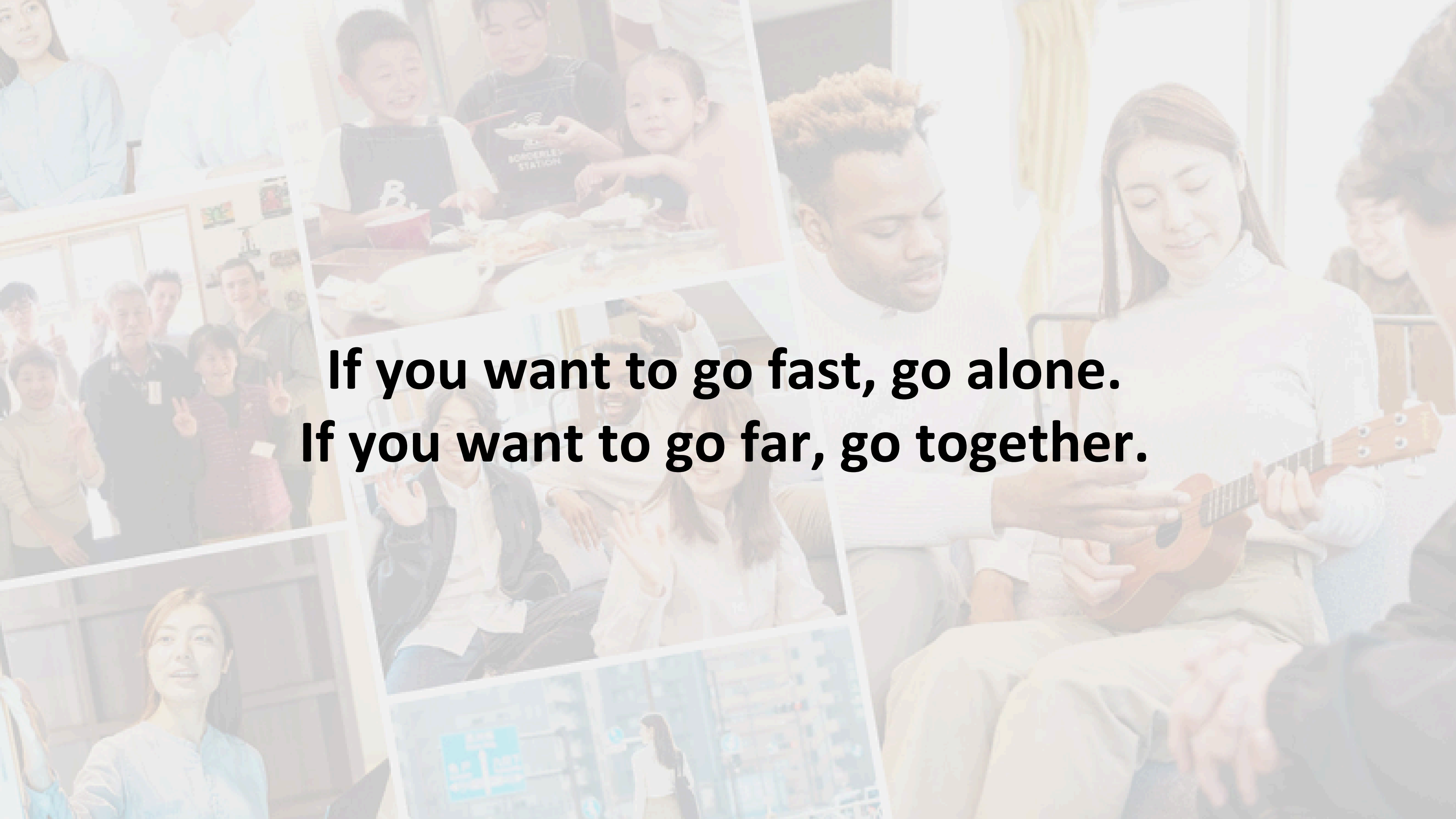
We provides backup studios —specialized teams in accounting, HR, PR, and creative design—through a shared platform to support entrepreneurs.

Culture of Sharing

An active entrepreneur community where knowledge-sharing and strategy meetings happen often—so you're never alone and can tackle challenges with peers.

Safety Net for New Challenges

We value learning by doing. If your business faces difficulties, you can restart with a new model or join another project —an environment to keep challenging yourself with our community.



**If you want to go fast, go alone.
If you want to go far, go together.**

Eligibility

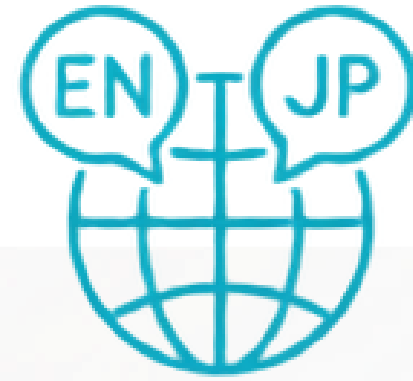


Current students at a Japanese university or early-career professionals with up to 5 years of experience.



Work in Fukuoka for the first 1-3 years, with a vision to then launch a social business in your home country.


Eligibility



Japanese Skills :

The selection process can be conducted in English.

While holding a JLPT certification is not mandatory, we place a priority on practical communication skills (listening and speaking).

- **Guide to Japanese proficiency:**
 - At the time of selection: Equivalent to JLPT N4–N5 level.
 - By the start date: Equivalent to JLPT N3 level or above.
 - **Commitment to Japanese Study:**
 - A strong commitment and concrete action toward continuous Japanese study (pre- and post-hire) is essential.
- 

Good Fit



The “Doer”

With a strong passion for social impact and experience in taking the initiative to concrete actions for positive change.



The “Challenger”

Eager to learn with an open mind, thrive in a fast-paced startup environment, and grow into a social entrepreneur.



The “Collaborator”

Who loves collaborating with various people and wants to build co-creation opportunities that spark innovation beyond boundaries.

YouTube

TEDx

人生の価値は、
何を得るかではなく、

何を残すかにある



**Life is not about what you get,
but what you leave behind**

BORDERLESS JAPAN



#メディア出演

<https://www.youtube.com/watch?v=cjtmDEG-B7U>

LinkedIn



BORDERLESS
SWITCH to HOPE



Borderless Japan

SWITCH to HOPE - Turning social challenges into hope for all.



<https://jp.linkedin.com/company/borderless-japan>



**Let's create a world full of hope together !
Thank you for your time.**