

RECRUITMENT 2025-2026

Kouken Corporation
株式会社光建



「 ABOUT US 」

KOUKEN is a regional construction company located in Nagoya initially engaged in crucial works for hydropower plants. As time goes, we have expanded our scope from power-related to general crucial works.

The Kanji 光 (kou) means light, while 建 (ken) means construction. Our symbol with different color describes the diversity in our team, while the flame portrays our passion to build the best infrastructure for the society.



「 OUR STRENGTH 」

#1 One-Stop Construction

Since we have both engineers and technicians, we can independently provide speedy and flexible on-site solution: both construction management and construction work.

#2 Experienced in Underground Power Transmission Pipeline Construction

The total construction length for underground power transmission line that supplies high-voltage electricity to the city center is more than 150 Km. Making us No.1 company in the greater Nagoya area in terms of construction experience.

#3 Plenty of In-house Equipment and Machinaries

We own a large amount of heavy machinery and tools that can be conveniently used even during emergency. Our on-site management is different from conventional construction industries.



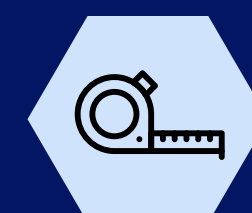
「 MAIN CUSTOMER PORTFOLIO 」

- Chubu Electric Power Company
中部電力
- Nagoya city
名古屋市
- Ministry of Land, Infrastructure, Transport and Tourism
国土交通省
- Nippon Steel Corporation
日本製鉄グループ
- Tokyo Electric Power Company
東京電力

NOW HIRING!

ROLE: SITE ENGINEERS & SITE SUPPORTING ENGINEERS

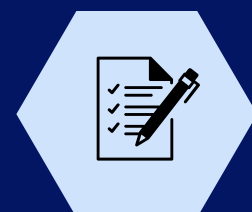
As our engineer you will:



Manage our construction site, survey and measure by using the needed equipment



Use ICT in our construction site



Analyze and make post-construction documents



Draw construction blueprints using CAD software

「 WHY WORK WITH US? 」

At our company, we embrace diversity, coming together through our unique strengths to achieve our shared vision and mission, ultimately enhancing the quality of our work.



「 DIVERSTY IN THE WORKFORCE 」

JAPANESE : INTERNATIONAL
WORKFORCE

5:1



「ENGINEERS' ONE-DAY SCHEDULE」

08.00-09.00 Tool Box Meeting	12.00-13.00 Lunch Break
09.00-09.30 Preparation	13.00-16.30 Continue Pipe Installation & Backfill
09.30-12.00 Excavate the Road and Install Pipes	16.30-17.00 Asphalt Paving, End of Work

INTERNSHIP

Curious on how our site engineers work?
Do you also want to experience to be the
part of our site? If you are interested in
civil engineering industry, apply to our 1-5
days internship!
Civil engineers are highly prioritized!!**



SUBMIT YOUR CV HERE
RAISSA@KOUKEN-NAGOYA.COM

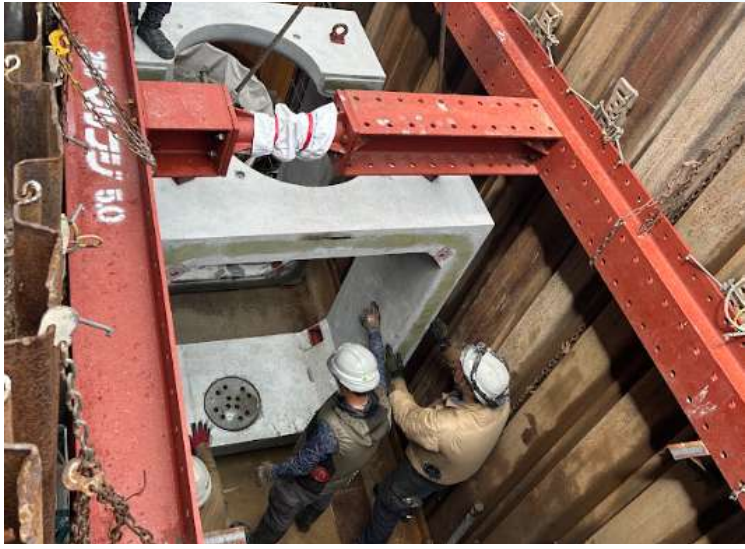
INSIDE KOUKEN



#研究活動



#ゲンバあるある



#2024年社員旅行



OUR PROJECT

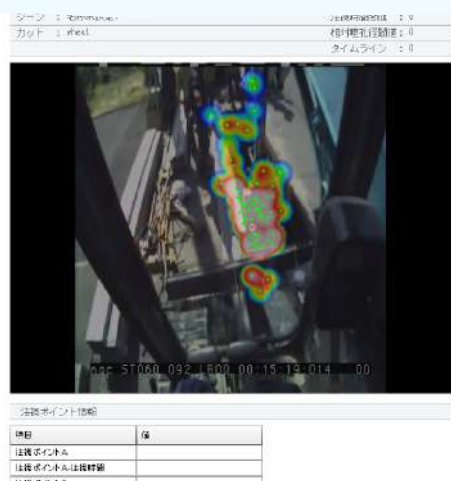
ゲンバ



**We may also provide an opportunity for students
who are interested in participating in corporate
planning, R&D, and others, according to your
personal interest and ability. Please reach out to us
for more detail.

「RESEARCH」

We have been running research with
university liaison with the aim to
bring **science** to construction
industry.



「PEOPLE'S VOICE」

When I was first assigned to the site, I never
questioned my supervisor's explanation.
Without understanding the purpose of the job,
it took me very long to measure things on site.
From that experience, I have learnt that I need
to fully understand the purpose of the job to
work efficiently.



I.M.

During my first year in the company when I was
working on the site, I was suddenly told 「Get
out of here, it's dangerous!」, then a trench
cave-in occurred. If I was late even just by a
second.. I learnt that it's important to focus and
be aware of your surroundings every time to
prevent accident on sites.



T.M.

FIND US ON

Take a peek into the intriguing day-to-day activities on our
construction site.

@kouken_nagoya



株式会社 光建
Chiyoda1-7-8, Naka-ku, Nagoya
052-251-2261

Website:

