

I. プリンスエドワード島(P.E.I.)州の状況

i. 警戒レベル区分

P.E.I.州では、以下の基準を複合的に考慮し、警戒レベルを 3 段階で定めている。

緑： ニューノーマル

黄色：注意

赤： 規制



(出所：P.E.I.州政府 [COVID-19 Alert Level System](#))

警戒レベル判定基準

- ・ 新型コロナウイルス感染制御状況
 - 過去 7 日間の新規症例発生率
 - 過去 7 日間の新規感染例（既知の情報源がない）の症例
 - 過去 7 日間の新型コロナウイルス感染症による入院数
- ・ 公衆衛生能力
 - 陽性の検査結果から 24 時間以内に到達した症例の割合
 - 症例の陽性検査結果から 48 時間以内に到達した接触の割合
 - テストから陽性のテスト結果報告までの時間
 - 確認された症例の症状発現から検体採取までの時間
 - 定期的なラボテスト回数（利用可能な週あたりテスト数）とテスト回数（実際の週あたりのテスト数）
 - 必要者に対する自己隔離施設の利用可能状況
- ・ 医療システムの稼働状況
 - 新型コロナウイルス救命救急能力
 - 現在の新型コロナウイルス ICU ケースロードを 2 倍にするための十分な予備容量
 - 特定の PPE アイテム（マスク、手袋、ガウンなど）の供給週数
- ・ 脆弱な設定での発生リスクが最小限に抑えられます
 - 職場、集合生活、または施設における新型コロナウイルス新規感染者およびその時点での罹患者数
- ・ 州に持ち込まれる症例のリスク管理状況
 - P.E.I.への渡航制限
 - 旅行事前承認、作業隔離の承認、およびシフト労働者に対する承認の実施状況
 - P.E.I.へ入州地点での旅行者のスクリーニング
 - 自己隔離要件の整備状況
 - 必要者に対する自己隔離施設の利用可能状況
 - 過去 7 日間の新しい渡航関連の症例発生率

- ・ コミュニティの関与
 - ウェブサイトへの訪問者数
 - プレスブリーフィング/メディア出演件数
 - 提出された運用計画の件数
 - 自己隔離者数
 - 新型コロナウイルス関連苦情の件数

どの段階においても；

- ・ 精神疾患患者、子供、依存症患者、高齢者など脆弱な人々に対するサービスおよびサポートを優先
- ・ 可能な限りサービスはバーチャルにて提供し、個人は在宅勤務
- ・ 個人向けの主要な公衆衛生ガイダンスの実施継続

は維持されるとしている。

（出所：P.E.I.州政府「[Monitoring and Surveillance](#)」）

警戒レベルごとの規制概要は以下の通り。

	New Normal	Caution	Restricted
Family and friends	<ul style="list-style-type: none"> Keep your household's circle small; use discretion with close contact with extended family and close friends 	<ul style="list-style-type: none"> Physical distancing with everyone outside extended household (1-2 people) 	<ul style="list-style-type: none"> Physical distancing with everyone outside household
Gatherings (including religious gatherings)	<ul style="list-style-type: none"> Larger organized gatherings (multiple to unlimited cohorts of 50) 	<ul style="list-style-type: none"> Limited outdoor and indoor gatherings (may be progressive: 10 people – 50 people; possible limited number of cohorts of 50; to be determined) 	<ul style="list-style-type: none"> Stay home as much as possible and only essential interactions
Recreation	<ul style="list-style-type: none"> Sport and recreation based on risk and with precautions in place Recreational facilities, services, including overnight camps, public spaces and open 	<ul style="list-style-type: none"> Organized recreational activities with brief low-risk contact permitted Recreational facilities and services, day camps, indoor public spaces may open, as per guidance including gathering limits where applicable 	<ul style="list-style-type: none"> Recreational facilities closed No organized sport and recreation Outdoor public spaces for individual/household use with precautions Non-contact outdoor recreational activities among one's household (e.g. walking, cycling, hiking, skiing, snowshoeing, angling, hunting) permitted
Business and NGOs	<ul style="list-style-type: none"> Continued essential and allowable services 	<ul style="list-style-type: none"> Essential services and allowable services may open Remaining non-essential and non-allowable services able to operate by phone, virtual services, delivery or pick-up 	<ul style="list-style-type: none"> Focus on essential services, that the interruption of which would endanger the life, health or personal safety of the whole or part of the population, serving the public Non-essential services able to operate by phone, virtual services, delivery or pick-up
Child care	<ul style="list-style-type: none"> Unlicensed and licensed child care centres 100% capacity, with physical distancing 	<ul style="list-style-type: none"> Unlicensed and licensed child care centres with altered or adjusted capacity 	<ul style="list-style-type: none"> Unlicensed and licensed child care centres with altered or adjusted capacity with access based on need
Health care (including community)	<ul style="list-style-type: none"> Maintain COVID-19 surge capacity and build the PPE contingency stockpile while continuing delivery of healthcare services 	<ul style="list-style-type: none"> Maintain COVID-19 surge capacity and build the PPE contingency stockpile. Some healthcare service levels may be adjusted to accommodated COVID response needs. 	<ul style="list-style-type: none"> Maintain COVID-19 surge capacity and build the PPE contingency stockpile while continuing delivery of healthcare services Access to health care and health service providers based on need

Public services	<ul style="list-style-type: none"> Public services may be reinstated in accordance with public health measures 	<ul style="list-style-type: none"> Essential, priority and additional public services 	<ul style="list-style-type: none"> Essential services only
Education and Training	<ul style="list-style-type: none"> Return to full time classroom learning for K-12 with public health measures in place and a contingency plan for remote learning Return to postsecondary education and training through online and/or in-person learning with public health measures in place 	<ul style="list-style-type: none"> Blended learning models including in-person and remote K-12 education with public health measures in place In person or online postsecondary education and training with public health measures in place and a contingency plan 	<ul style="list-style-type: none"> Remote K-12 education Online postsecondary education and training
Long-term care	<ul style="list-style-type: none"> More than one partner in care. Unlimited number of visitors with same privileges as partners in care. Residents able to travel and disembark with partners in care and engage with limited number of visitors. Restricted staff movement between all long-term care facilities. Enhanced public health and control measures. 	<ul style="list-style-type: none"> More than one partner in care. Limited number of visitors permitted in designated areas. Residents able to travel and disembark with partners in care. Restricted staff movement between all long-term care facilities. Enhanced public health and control measures. 	<ul style="list-style-type: none"> One partner in care. No visitors permitted. Residents restricted to facility except for exceptional circumstances Restricted staff movement between all health facilities. Strict public health and control measures.

（出所：P.E.I.州政府 [COVID-19 Alert Level System](#)）

ii. 地域区分

同州はエリア区分を行っていない。州全体で同一の警戒レベルが施行されている。

II. 経済活動について

i. 再開指針

P.E.I.州では「[Renew PEI Together](#)」という段階的経済再開計画を2020年4月28日に発表した。

	Current	PHASE 1 Starting May 1, 2020	PHASE 2 Starting May 22, 2020	PHASE 3 Potential June 12, 2020	PHASE 4 Looking ahead
Border screening and self-isolation	Traveler screening in place at points of entry to PEI and self-isolation requirements	Traveler screening in place at points of entry to PEI and self-isolation requirements	Traveler screening in place at points of entry to PEI and self-isolation requirements	Traveler screening in place at points of entry to PEI and self-isolation requirements	Further relaxation of measures as situation permits
Gatherings	Stay home as much as possible and only essential interactions	Limited outdoor gatherings of no more than 5 individuals involving people from different households	Limited indoor gatherings of no more than 5 individuals and outdoor gatherings of no more than 10 individuals involving people from different households	Potential: Gatherings of no more than 15 people indoor and 20 people outdoor; including religious gatherings	
Recreation	Interaction between members of a household only	Non-contact outdoor recreational activities	Non-contact indoor recreational activities	Potential: Organized recreational activities, recreational facilities and services, public spaces	
Business and NGOs	Focus on essential services serving the public; non-essential services able to operate by phone, virtual services, delivery or pick-up	Select outdoor and construction services	Retail businesses and select indoor services	Potential: Additional personal services, in-room dining, and accommodations for PEI residents only	
Child care services	Child care for essential service workers	Child care for essential service workers	Unlicensed and licensed child care centres	Unlicensed and licensed child care centres	
Health care	Essential services only	Priority non-urgent health care services	Additional non-urgent health care services	Continued transition to increased non-urgent health services	
Public services	Essential services only	Priority public services	Additional public services	Further public services	
Education	Home-based learning options	Home-based learning options, with some limited activities	Home-based learning options, with some limited activities	Home-based learning options, with some limited activities	
Long-term care	Visitor restrictions in place	Visitor restrictions in place	Visitor restrictions in place	Visitor restrictions in place	

このフェーズアプローチが更新された情報はなく、他州同様保留になっていると思われる。

ii. 事業者への規制

A) 事業活動における規制

再開計画に代わり現在施行されているのが、感染制御計画「ポスト・サーキットブレーカー（[COVID-19 Post Circuit Breaker Holiday Measures](#)）」。同計画は2021年1月6日～2021年1月25日の期間運用され、以後2021年1月23日に更新。「ポスト・サーキットブレーカー」は、他のすべての既存のセクター固有の公衆衛生ガイダンスの上位概念にある。

すべての企業、サービス、組織、集会の主催者は、感染リスクを軽減するための対策を講じ、それらの対策を詳述した運用計画を作成して従う必要がある。

ポスト・サーキットブレーカー(更新版)

Family and friends	<ul style="list-style-type: none"> • Personal gatherings of your household and up to ten (10) additional individuals indoors or outdoors; these individuals should be as consistent as possible and physical distancing maintained as best possible <ul style="list-style-type: none"> ◦ Ensure anyone coming to your home is not in self isolation and does not have symptoms of COVID-19 ◦ If someone in your household is self isolating or has symptoms of COVID-19 you shouldn't host a personal gathering
Gatherings (including religious gatherings)	<ul style="list-style-type: none"> • Organized gathering limit of 50 for activities including concerts, worship services, bingo halls, and movie theatres with an operational plan <ul style="list-style-type: none"> ◦ Three additional multiples of 50 permitted with a prior approval of the operational plan (up to 200 total) • Weddings and funerals up to 50 individuals plus officiants; not eligible for multiple gatherings • Organized gatherings cannot occur in personal dwellings
Recreation	<ul style="list-style-type: none"> • Gyms/fitness facilities, museums, and libraries, may operate provided: <ul style="list-style-type: none"> ◦ Physical distancing and other public health measures are maintained; Indoor fitness activities such as hot yoga, boot camps, spin and high intensity interval training at 3 m distance ◦ Group activities follow the gathering limits • Organized recreation and team sports may resume following the organized gathering limits, with enhanced attention to records for contact tracing
Business and NGOs	<ul style="list-style-type: none"> • Retail stores, markets, and craft fairs may operate provided physical distancing and other public health measures are maintained • In-person consumption of food and beverage at food premises and licensed facilities with a 12 a.m. closing time; maximum table size of ten <ul style="list-style-type: none"> ◦ People should be seated at all times, except for going to washrooms and entering/exiting ◦ Limit of 50 people with an additional three groups of 50 permitted with a prior approval of the operational plan • Personal services, may operate on an appointment basis following the Personal Services Guidance.
Child care	<ul style="list-style-type: none"> • Unlicensed and licensed childcare centres 100% capacity, with physical distancing
Health care (including community)	<ul style="list-style-type: none"> • Maintain COVID-19 surge capacity and build the PPE contingency stockpile while continuing delivery of healthcare services • In person residential day programs and mental health and addictions programs to continue
Public services	<ul style="list-style-type: none"> • Public services should be available in-person, phone, virtual, delivery or pick-up
Education and Training	<ul style="list-style-type: none"> • Full time classroom learning for K-12 with public health measures in place and a contingency plan for remote learning • Post-secondary education and training through online and/or in-person learning with public health measures in place
Long-term care	<ul style="list-style-type: none"> • Up to two partners in care. Limited number of visitors permitted in designated areas. • Residents permitted to travel only in the company of partners in care, or for exceptional circumstances • Restricted staff movement between all long term care facilities • Strict public health and control measures

(出所：P.E.I.州政府「[Updated COVID-19 Post Circuit Breaker Holiday Measures](#)」)

対策運用計画書について

対象者： ・「新型コロナウイルス感染症予防および自己隔離命令([CPHO COVID-19 Prevention and Self-Isolation Order](#))」に基づき運営が許可されている事業、サービス、組織の所有者および運営者企業、サービス、組織のすべての所有者と運営者
・屋内または屋外で 50 人以上の集まりのすべての主催者（組織された集まり）

運用計画に含める内容：

1. 互いに 2 メートル以内の人々（従業員および/またはクライアントを含む）のコンタクトを最小限に抑えるための、あらゆる合理的措置
2. 自己隔離すべき従業員が職場に入るのを防ぐために必要な、あらゆる合理的措置
3. 症状のある従業員をすぐに仕事から外すことを保証する、除外ポリシーの作成
4. 感染リスクをどのように軽減するかを詳述した運用計画の作成
5. 共有エリアおよびモノの表面の確実に洗浄、消毒することの確認
6. 手洗いステーションが利用可能であることの確認
7. 産業セクター毎のガイダンスに示されるように、特定の企業、サービス、または組織向けの指示に従うこと
8. CPHO(最高公衆衛生責任者)が発効する指示に従うこと

(出所：P.E.I.州政府 [Operational Plan Template FAQ's](#))

産業セクター毎のガイダンス：[Public Health Measures Guidance](#) (P.E.I.州政府サイト)

B) 事業活動が可能な業種

同州では「事業可能サービス (allowable service)」と「必須サービス (essential service)」に対し、公衆衛生命令下において事業活動を認めている。これらは以下のように定義されているが、具体的な業種は明記されていない。

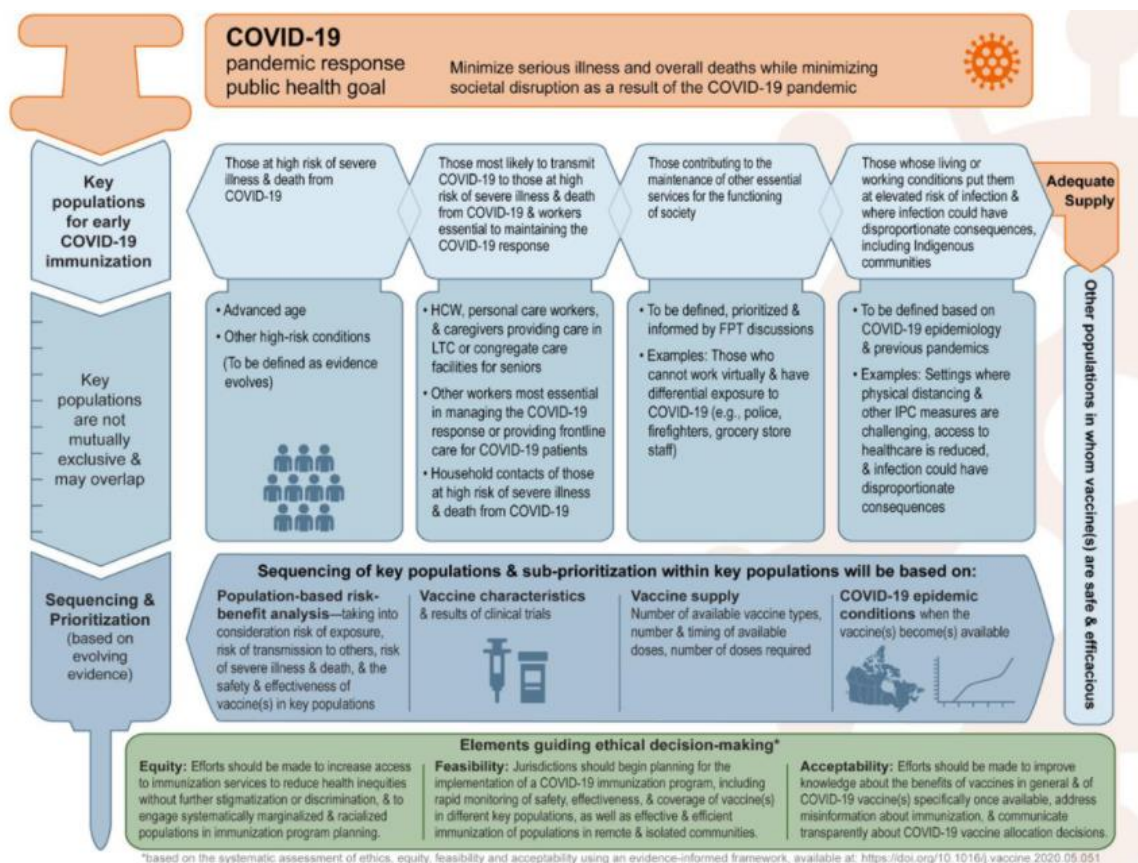
- ・ 事業可能サービス：
必須サービスではないが、CPOH によって公衆衛生命令下でも活動することが適当であると承認しているサービス。
- ・ 必須サービス：
サービスが滞った場合に、州民の一部もしくは全員が生命、健康、個人の安全の危機に晒されるサービス。

(出所：P.E.I.州政府 [CPHO COVID-19 Prevention and Self-Isolation Order](#))

III. ワクチン接種計画

すべての州や準州と同様、P.E.I.州は連邦政府予防接種諮問委員会 (NACI: National Advisory Committee on Immunization)の予備ガイダンスに従い計画を策定。

ワクチン接種は 3 段階による展開の計画で、接種を希望する 18 歳以上のすべての P.E.I.州居住者が接種可能。



(出所：連邦政府 [Guidance on the prioritization of initial doses of COVID-19 vaccine\(s\)](#))

第一段階

時期：2020 年 12 月 - 2021 年 3 月

対象：・長期および地域ケアの居住者とスタッフ

- ・感染リスクが高い、s 患者と直接接触する医療従事者
- ・80 歳以上の高齢者
- ・先住民コミュニティに住む 18 歳以上の成人
- ・他の住居または共有生活施設の居住者およびスタッフ
(例：グループホーム、住居ケア、シェルター、矯正施設)
- ・トラック運転手やその他シフト作業員

第二段階

時期：2021 年 4 月から 6 月

対象：・フェーズ 1 から残っている優先グループの全員

- ・フェーズ 1 に含まれていない医療従事者
- ・70 歳以上の高齢者
- ・必須事業従事者

第三段階

時期：夏 - 2021 年秋

対象：・フェーズ 2 から残っている優先グループの全員
・一般市民

（出所：P.E.I.州政府 [COVID-19 Vaccines and Immunization Program](#)）

【免責条項】

本資料で提供している情報は、ご利用される方のご判断・責任においてご使用ください。ジェットロでは、できるだけ正確な情報の提供を心掛けておりますが、本資料で提供した内容に関連して、ご利用される方が不利益等を被る事態が生じたとしても、ジェットロは一切の責任を負いかねますので、ご了承ください。連邦政府及び州政府、自治体による規制や各種措置は感染拡大の状況等に応じて頻繁に更新されています。最新の内容がご利用される方が直接、連邦または各州政府にご確認されるようお願いいたします。