

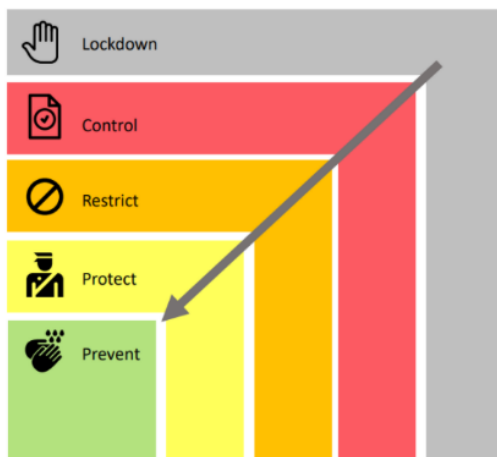
目次

I.	オンタリオ州の状況.....	2
i.	警戒レベル区分	2
ii.	地域区分	3
II.	経済活動について	4
i.	再開指針	4
ii.	事業者への規制	5
(A)	事業活動における規制.....	5
(B)	事業活動が可能な業種.....	6
(C)	トロント市について.....	11
III.	ワクチン接種計画	12

I. オンタリオ州の状況

i. 警戒レベル区分

州政府による枠組み「[COVID-19 Response Framework: Keeping Ontario Safe and Open](#)」に基づき、オンタリオ州では緑（防止）、黄色（保護）、オレンジ（制限）、赤（規制）、グレー（封鎖）の5色にて警戒レベルを区分。



(出所:オンタリオ州政府 [COVID-19 Response Framework: Keeping Ontario Safe and Open](#))

感染者数推移、医療機関及び公衆衛生システムの収容能力を基準としており、これまでは衛生ユニットごとに警戒レベルが定められてきた。レベル以降の基準は以下の通り。

PREVENT (Standard Measures)	PROTECT (Strengthened Measures)	RESTRICT (Intermediate Measures)	CONTROL (Stringent Measures)	LOCKDOWN (Maximum Measures)
Epidemiology <ul style="list-style-type: none"> Weekly incidence rate is < 10 per 100,000 % positivity is < 0.5 Rt < 1 Outbreak trends/ observations Level of community transmission/non-epi linked cases stable Health System Capacity <ul style="list-style-type: none"> Hospital and ICU capacity adequate Public Health System Capacity <ul style="list-style-type: none"> Case and contact follow up within 24 hours adequate 	Epidemiology <ul style="list-style-type: none"> Weekly incidence rate is 10 to 24.9 per 100,000 % positivity is 0.5-1.2% Rt is approximately 1 Repeated outbreaks in multiple sectors/settings OR increasing/# of large outbreaks Level of community transmission/non-epi linked cases stable or increasing Health System Capacity <ul style="list-style-type: none"> Hospital and ICU capacity adequate Public Health System Capacity <ul style="list-style-type: none"> Case and contact follow up within 24 hours adequate 	Epidemiology <ul style="list-style-type: none"> Weekly incidence rate is 25 to 39.9 per 100,000 % positivity is 1.3-2.4% Rt is approximately 1 to 1.1 Repeated outbreaks in multiple sectors/settings, increasing/# of large outbreaks Level of community transmission/non-epi linked cases stable or increasing Health System Capacity <ul style="list-style-type: none"> Hospital and ICU capacity adequate or occupancy increasing Public Health System Capacity <ul style="list-style-type: none"> Case and contact follow up within 24 hours adequate or at risk of becoming overwhelmed 	Epidemiology <ul style="list-style-type: none"> Weekly incidence rate ≥ 40 per 100,000 % positivity ≥ 2.5% Rt is ≥ 1.2 Repeated outbreaks in multiple sectors/settings, increasing/# of large outbreaks Level of community transmission/non-epi linked cases increasing Health System Capacity <ul style="list-style-type: none"> Hospital and ICU capacity at risk of being overwhelmed Public Health System Capacity <ul style="list-style-type: none"> Public health unit capacity for case and contact management at risk or overwhelmed 	Epidemiology <ul style="list-style-type: none"> Adverse trends after entering Red/Control, such as: <ul style="list-style-type: none"> Increasing weekly case incidence and/or test positivity Increasing case incidence and/or test positivity among people aged 70+ Increasing outbreaks among vulnerable populations such as long-term care residents and residents of other congregate settings Health System Capacity <ul style="list-style-type: none"> Hospital and ICU capacity at risk of being overwhelmed Public Health System Capacity <ul style="list-style-type: none"> Public health unit capacity for case and contact management at risk or overwhelmed

(出所:オンタリオ州政府 [COVID-19 Response Framework: Keeping Ontario Safe and Open — Lockdown Measures](#))

ロックダウンにおける主な規制

- ・濃厚接触は家族及び不可欠なサポートだけに制限
- ・家族や友人宅の訪問禁止。ただし不可欠なサポートワーカーと緊急修理担当者は訪問可能
- ・屋外で開催される公開イベントや集りは、最大10人までに制限
- ・企業や職場では、可能な限り在宅勤務を実施
- ・企業は、HVACシステムの見直しを徹底し、正常に機能していることを確認
- ・飲食店における屋内ダイニング、屋外ダイニング、パティオの利用は不可
- ・テイクアウト、ドライブスルー、配送のオプションは引き続き利用可能
- ・すべての屋内ジムとレクリエーションプログラムは閉鎖
- ・フードバンク等コミュニティサポートのために市が運営するコミュニティセンターは開館
- ・必須事業を除き、モールは閉鎖
- ・カーブサイドピックアップを除いて、必須ではない小売店はすべて閉鎖
- ・食料品売り場のある大規模小売店は、収容可能人数率を制限し営業継続可能
- ・大型収容施設および必須ビジネスにおいても収容可能人数率を削減
- ・すべての美容院、理髪店、ネイルサロン、タトゥー屋は閉鎖
- ・会議場およびイベントスペースは閉鎖のまま
- ・カジノ、ビンゴホール、その他のゲーム施設の閉鎖のまま
- ・自分の生活圏外への非必須の外出は極力避け、できるだけ居住場所にいること
- ・必須外出とは料品や薬局、医療機関への訪問、運動、学校への通学、育児、仕事などを指す

ii. 地域区分

オンタリオ州は36の衛生ユニット(Public Health Units)に区分されている。上記の基準に則り、2020年12月25日までは各ユニットごとに警戒レベルが定められていたが、12月26日～2月9日まで、全州に「グレー(封鎖)」が適用、ロックダウンが施行されている。



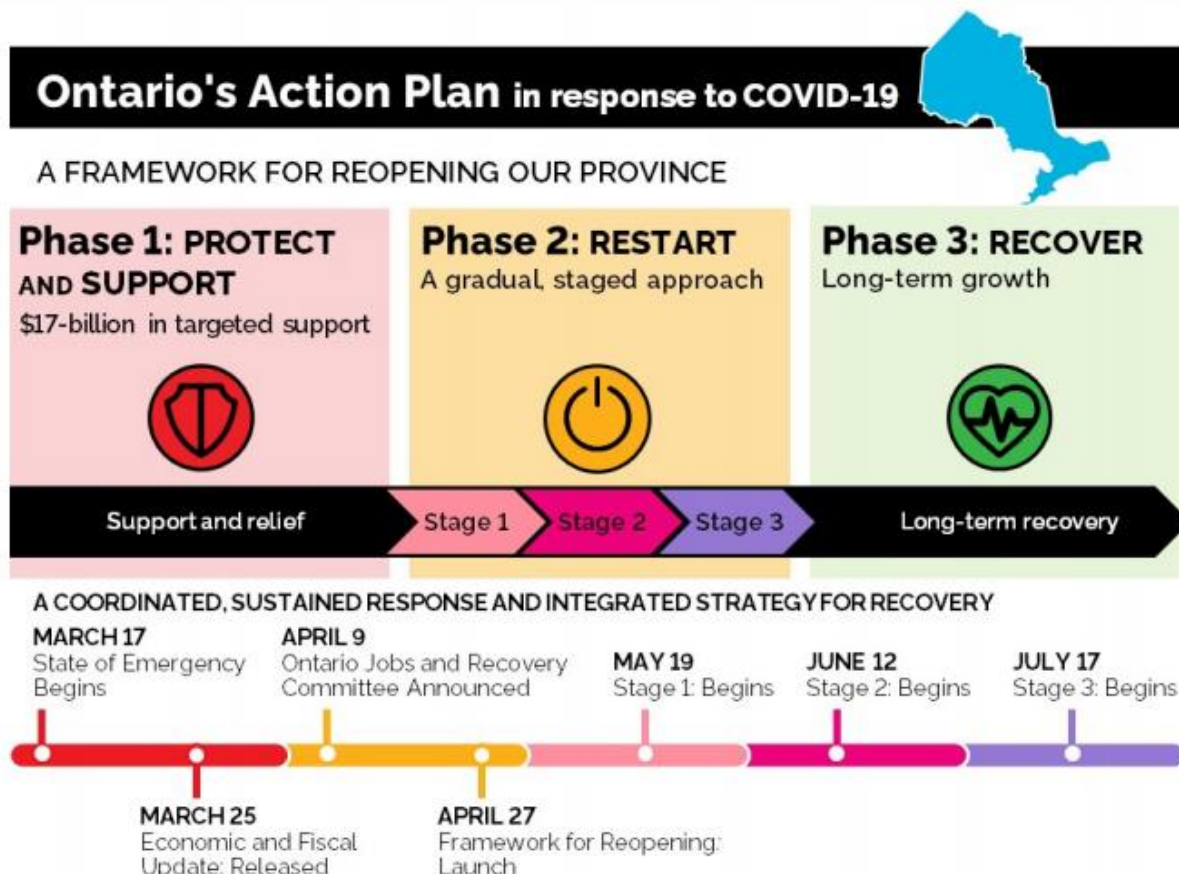
(出所：オンタリオ州政府「[All Ontario: Case numbers and spread](#)」)

全州にて警戒レベルが同一となって以来、衛生ユニットごとの色分け区分は中断。ユニットごとの感染者数分布がそれに類似した情報として常時更新されている。

II. 経済活動について

i. 再開指針

オンタリオ州は2020年4月27日に「再開に向けた枠組み([A Framework for reopening Our Province](#))」を発表して以降、毎月更新を重ね、7月13日に「[A Framework: Stage3](#)」を公開した。以後この更新は止まり、時系列による段階的経済再開計画は打ち出さなくなった。



(出所：オンタリオ州政府 [A Framework for reopening Our Province](#))

2020年11月7日、「安全な経済活動に向けた枠組み([COVID-19 Response Framework: Keeping Ontario Safe and Open](#))」を発表。さらにオンタリオ州一部地域におけるロックダウン施行を受け、発表か2週間後の2020年11月22日、同枠組みは「[COVID-19 Response Framework: Keeping Ontario Safe and Open —Lockdown Measures](#)」へと更新された。

2021年1月12日、オンタリオ全州にて2度目の非常事態宣言が発令、1月16日「全州閉鎖期間における公共衛生、職場安全の強化 ([Enhancing Public Health and Workplace Safety Measures in the Provincewide Shutdown](#))」が発表された。これは「緊急事態管理及び市民保護法 ([Emergency Management and Civil Protection Act](#))」、同法に基づく命令、「2020年オンタリオ州再開法 ([Reopening Ontario \(A Flexible Response to COVID-19\) Act, 2020](#))」を組み合わせられた内容となっている。

1月14日に施行された「在宅命令([Stay at Home Order](#))」を始め、事業活動が認められる業種、その条

件等が詳細に記されている。

全州におけるロックダウンは2021年2月9日までを予定しており、終了し次第「安全な経済活動にむけた枠組み」を再活用するとしている。[\(Plan for a return to the COVID-19 response framework\)](#)

ii. 事業者への規制

A) 事業活動における規制

すべてのビジネス、団体、施設における遵守事項として、「保健所の指示に従うこと」「物理的距離の確保及び動線の管理」「スクリーニング」「PPEの実装」、「収容人数制限の遵守」「衛生管理の徹底」「フェイスカバーの着用」「安全計画書の作成」が求められている。これに加え、現場にいないと職務遂行できない従業員を除き、「在宅勤務」することが新たに義務付けられた。

(UPDATED) General Public Health Measures for all Businesses, Organizations and Facilities

<p>Public Health Advice, Recommendations and Instructions Businesses or organizations must operate in compliance with the advice, recommendations, and instructions of public health officials, including any advice, recommendations or instructions on physical distancing, cleaning or disinfecting, and working remotely. Check with your local public health unit for any additional advice, recommendations or instructions.</p>
<p>Work from Home Except Where Necessary Each person responsible for a business or organization that is open shall ensure that any person who performs work for the business or organization conducts their work remotely, with limited exceptions, for instance, where the nature of their work requires them to be on-site at the workplace.</p>
<p>Physical Distancing and Line Management • Businesses or places must not permit patrons to line up inside the businesses or place, or to line up or congregate outside of the business or place unless they are maintaining a physical distance of at least two metres from other groups of persons and wearing a mask or face covering that covers their mouth, nose and chin unless they are entitled to an exception set out in the regulation.</p>
<p>Screening Businesses or organizations must operate in compliance with the advice, recommendations instructions issued by the Office of the Chief Medical Officer of Health on screening individuals. This includes: • Workplaces must screen any workers or essential visitors entering the work environment. See the COVID-19 Screening Tool for Workplaces for more information.</p>
<p>Personal Protective Equipment including Eye Protection Personal protective equipment that provides protection of the eyes, nose, and mouth, is required if a worker is required to come within 2 metres of another person who is not wearing a face covering and not separated by plexiglass or some other impermeable barrier.</p>
<p>Capacity Limits All businesses or facilities must limit capacity so that every member of the public is able to maintain two metres of physical distancing from every other person, and limit the number of people occupying any room that is open to the public to 50% capacity of the particular room. Some businesses or facilities have additional capacity restrictions that apply beyond the general capacity requirements. All businesses or facilities that engage in retail sales to the public must post a sign in a location visible to the public that states the maximum capacity they are permitted to operate under. Please Note: • The maximum number of persons permitted in a business or facility that is operating at 50 per cent capacity is determined by taking the total square metres of floor space accessible to the public in the business or facility, not including shelving and store fixtures, dividing that number by 8 and rounding the result down to the nearest whole number. • The maximum number of persons permitted in a business or facility that is operating at 25 per cent capacity is determined by taking the total square metres of floor space accessible to the public in the business or facility, not including shelving and store fixtures, dividing that number by 16 and rounding the result down to the nearest whole number.</p>
<p>Cleaning and Disinfection Businesses or places that are open shall ensure that equipment, washrooms, locker rooms, change rooms, showers that are accessible to the public are cleaned and disinfected as frequently as is necessary to maintain a sanitary condition.</p>
<p>Face Coverings Businesses or organizations must ensure that masks or face coverings are worn by any person (including members of the public and workers) in the indoor area of the business or organization, with limited exceptions.</p>
<p>Safety Plans Requirement for all businesses open to prepare and make available a COVID-19 safety plan. A copy of the plan shall be made available to any person for review upon request, and be posted where it would come to the attention of individuals working in or attending the business.</p>

(出所:オンタリオ州政府 [Enhancing Public Health and Workplace Safety Measures in the Provincewide Shutdown](#))

※ 職場でのスクリーニング基準は「[COVID-19 Screening Tool for Workplaces](#)」を参照。

※ 「安全計画書」の雛形は「[COVID-19 Safety Plan](#)」を参照。

B) 事業活動が可能な業種

以下に示される業種においてのみ、条件付きで事業活動が認められている。

条件は業種によって異なるので、以下を参照。ロックダウン開始以降、非常事態宣言発令により変更となった箇所が赤字で示されている。

- ・ サプライチェーン
- ・ 会議、イベントスペース
- ・ 短期滞在施設
- ・ 飲食業
- ・ 自動車免許教習所
- ・ 小売業
- ・ サービス業
- ・ 金融機関
- ・ 不動産業
- ・ 通信・IT インフラ
- ・ メンテナンス業
- ・ 交通機関
- ・ 製造業
- ・ 農業および食糧生産
- ・ 建設業
- ・ 資源、エネルギー
- ・ コミュニティサービス
- ・ 屋内外スポーツ、フィットネス施設
- ・ 屋外遊具利用
- ・ 研究機関
- ・ ヘルスケア、社会サービス
- ・ 報道機関
- ・ エンターテイメント
- ・ 図書館
- ・ 競馬場 (レース開催は禁止)
- ・ ナイトクラブ、ストリップクラブ (「飲食店」に該当する場合のみ)
- ・ 動物園、水族館 (一般来場は禁止)

【ロックダウン下に事業活動が認められている業種別 公共衛生基準及び職場安全基準】

Sector	Businesses, organizations and services permitted to open under the Provincewide Shutdown and any sector-specific public health and workplace safety measures
Supply chain	<ul style="list-style-type: none"> • Businesses that supply businesses or places that are permitted to open within Ontario, or that supply businesses or services that have been declared essential in a jurisdiction outside of Ontario, with the support, products, supplies, systems, or services, including processing, packaging, warehousing, distribution, delivery, and maintenance necessary to operate
Meeting or event space	<p>Only permitted to open for:</p> <ul style="list-style-type: none"> • The operation of child care centres and authorized recreational and skill building programs within the meaning of the <i>Child Care and Early Years Act, 2014</i> • Court services • Government services • Mental health and addictions support services (e.g., Alcoholics Anonymous) permitted to a maximum of 10 people • Social services • Collective bargaining, so long as no more than ten people are permitted to occupy the rented space <p>Contact information recording required, with the exception of court services</p>
Short-term rentals	<p>Short-term rentals (e.g., cottages, cabins):</p> <ul style="list-style-type: none"> • Only to be provided to individuals who are in need of housing • Previously made reservations for short term rental accommodations will be permitted only if the individual is in need of housing • Ice fishing huts may only be rented for day use and for use by members of the same household, with limited exceptions <p>Refer to the Services section for details on motels, hotels, lodges, resorts and other shared rental accommodation, including student residences</p>

Sector	Businesses, organizations and services permitted to open under the Provincewide Shutdown and any sector-specific public health and workplace safety measures
Restaurants, bars, and other food or drink establishments	<p>Restaurants, bars and other or drink establishments</p> <ul style="list-style-type: none"> • Take out, drive through, and delivery permitted only • Includes the sale of alcohol
Driving instruction	<p>In-person driving instruction</p> <ul style="list-style-type: none"> • No in-person driving instruction permitted except: <ul style="list-style-type: none"> ○ For instruction for drivers of commercial motor vehicles ○ Where the instruction is part of the Ontario Driver Certification Program administered by the Ministry of Transportation and involves the operation of motor vehicles for which: <ul style="list-style-type: none"> ▪ A class of driver's licence other than Class G, G1, G2, M, M1 or M2 is required ▪ An air brake endorsement is required ○ Or that is provided by a private career college, in accordance with certain conditions
Retailers	<p>Supermarkets, convenience stores, indoor farmer's markets and other stores that primarily sell food</p> <ul style="list-style-type: none"> • Open for in-person retail, subject to: <ul style="list-style-type: none"> ○ Members of the public being able to maintain two metres physical distance from every other person in the business or facility and complying with face covering rules ○ The number of persons occupying any room that is open to the public does not exceed 50% capacity • Curbside pick-up and delivery permitted <p>Pharmacies</p> <ul style="list-style-type: none"> • Open for in-person retail, subject to: <ul style="list-style-type: none"> ○ Members of the public being able to maintain two metres physical distance from every other person in the business or facility and complying with face covering rules ○ The number of persons occupying any room that is open to the public does not exceed 50% capacity • Curbside pick-up and delivery permitted
Retailers, continued	<p>Discount retailers and big box stores that sell groceries</p> <ul style="list-style-type: none"> • Open for in-person retail, subject to: <ul style="list-style-type: none"> ○ Members of the public being able to maintain two metres physical distance from every other person in the business or facility and complying with face covering rules ○ The number of persons occupying any room that is open to the public does not exceed 25% capacity • Curbside pick-up and delivery permitted <p>Gas stations and other fuel suppliers</p> <p>Safety supply stores, businesses that sell, rent or repair assistive/mobility/medical devices, and optical stores that sell prescription eyewear to the public:</p> <ul style="list-style-type: none"> • By appointment only during operating hours of no earlier than 7am and no later than 8pm • Limit the number of persons occupying any room that is open to the public in the business to not exceed 50% capacity • Curbside pick-up and delivery permitted during operating hours of no earlier than 7am and no later than 8pm <p>Stores that sell liquor, including beer, wine and spirits:</p> <ul style="list-style-type: none"> • Limit the number of persons occupying any room that is open to the public in the business does not exceed 25% capacity • Operating hours restricted to no earlier than 7am and no later than 8pm • Curbside pick-up and delivery permitted only during operating hours
Retailers, continued	<p>Shopping malls:</p> <ul style="list-style-type: none"> • Closed for in-person retail. Members of the public are only permitted to enter the mall to: <ul style="list-style-type: none"> ○ Access businesses and organizations permitted to be open (e.g., pharmacy, dentist); food court open for take-away, or by appointment only to facilitate pick-up as set out below ○ Access court services and government services • Shopping mall may establish: <ul style="list-style-type: none"> ○ A single designated location inside the shopping mall for order pick-up by patrons. Pick-up inside the shopping mall must be by appointment only ○ Any number of designated locations outside the shopping mall for curbside pick-up by patrons • Members of the public not permitted to loiter in any area of the shopping mall that is not related to the purpose of their visit • Must open no earlier than 7 a.m. and close no later than 8 p.m., except to provide access to grocery stores/supermarkets, pharmacies, and health care providers that only have public entrances that face the interior of the mall • Curbside pick-up and delivery permitted only during operating hours <p>Cannabis retail stores operating under the authority of a retail store authorization issued under the Cannabis Licence Act, 2018:</p> <ul style="list-style-type: none"> • By curbside pick-up or delivery only during operating hours of no earlier than 9am and no later than 8pm • An item may only be provided for curbside pickup if the patron ordered the item before arriving at the business premises <p>Garden centres:</p> <ul style="list-style-type: none"> • Curbside pick-up and delivery permitted during operating of no earlier than 7am and no later than 8pm • An item may only be provided for curbside pickup if the patron ordered the item before arriving at the business premises

Sector	Businesses, organizations and services permitted to open under the Provincewide Shutdown and any sector-specific public health and workplace safety measures
Retailers, continued	<p>Motor vehicle sales</p> <ul style="list-style-type: none"> Includes cars, trucks and motorcycles; recreational vehicles including motor homes; trailers and travel trailers; boats and other watercraft; and other motorized vehicles, including power-assisted bicycles, golf carts, scooters, snowmobiles and all-terrain vehicles By appointment only Members of the public must not be permitted where products are neither sold nor displayed for sale Subject to certain conditions related to test drives Operating hours restricted to no earlier than 7am and no later than 8pm and may not deliver goods to patrons outside of those hours <p>Outdoor markets</p> <ul style="list-style-type: none"> Includes farmer's markets and holiday markets only if they primarily sell food to the public Must require members of the public to remain outdoors at all times, including for curbside pick-up or delivery Operating hours restricted to no earlier than 7am and no later than 8pm Curbside pick-up and delivery permitted only during operating hours <p>General Retail (all other retail, including hardware stores, pet food, computer stores, etc.):</p> <ul style="list-style-type: none"> Curbside pick-up or delivery only during operating of no earlier than 7am and no later than 8pm (in-person retail shopping not permitted) An item may only be provided for curbside pickup if the patron ordered the item before arriving at the business premises Sales must be exclusively made so patrons are not required to enter the indoor area of the business, including curbside pick-up or delivery Operating hours of no earlier than 7am to no later than 8pm
Services	<p>Rental and leasing services, including automobile, commercial and light industrial machinery and equipment rental</p> <ul style="list-style-type: none"> By appointment only <p>Automated and self-service car washes</p> <p>Laundromats and drycleaners</p> <p>Snow clearing and landscaping services</p>
Services, continued	<p>Security services for residences, businesses and other properties</p> <p>Domestic services</p> <ul style="list-style-type: none"> Only to support children, seniors or vulnerable persons, including housekeeping, cooking, indoor and outdoor cleaning and maintenance services <p>Vehicle and equipment repair and essential maintenance and vehicle and equipment rental services</p> <ul style="list-style-type: none"> By appointment only <p>Courier, postal, shipping, moving and delivery services</p> <p>Funeral and related services</p> <p>Staffing services including providing temporary help</p> <p>Veterinary services</p> <ul style="list-style-type: none"> For services that are necessary for the immediate health and welfare of the animal only, or provided through curb side pick-up and drop-off of the animal <p>Other businesses that provide for the health and welfare of animals, including farms, boarding kennels, stables, animal shelters and research facilities</p> <p>Businesses that provide pet training exclusively for service animals</p> <p>Hotels, motels, lodges, cabins, cottages, resorts and other shared rental accommodation, including student residences</p> <ul style="list-style-type: none"> Any indoor pools, indoor fitness centres, or other indoor recreational facilities that are part of the operation of these businesses, are closed
Services, continued	<p>Seasonal campgrounds</p> <ul style="list-style-type: none"> Must be made available only for trailers and recreational vehicles used by individuals in need of housing or are permitted to be there by seasonal contract Only campsites with electricity, water service and facilities for sewage disposal may be provided for use All recreational and other shared facilities, excluding washrooms and showers must be closed Other areas of the seasonal campground must be closed to the general public and must only be opened for the purpose of preparing the seasonal campground for reopening Previously made reservations for short term rental accommodations will be permitted only if the individual is in need of housing <p>Community centres</p> <ul style="list-style-type: none"> Permitted to open for: <ul style="list-style-type: none"> The operation of child care centres and authorized recreational and skill building programs within the meaning of the <i>Child Care and Early Years Act, 2014</i> Mental health and addictions support services (e.g., Alcoholics Anonymous) permitted to a maximum of 10 people Social services <p>Cheque cashing services</p>
Financial services	<ul style="list-style-type: none"> Capital markets and related securities trading and advisory services Banking/credit union activities including credit intermediation Insurance Land registration services Pension and benefits payment services Financial services including payroll and payment processing and accounting and tax services
Real estate (including pre-sale construction)	<p>Real estate (including pre-sale construction)</p> <ul style="list-style-type: none"> No open houses - showing a property permitted by appointment only

Sector	Businesses, organizations and services permitted to open under the Provincewide Shutdown and any sector-specific public health and workplace safety measures
Telecommunications and IT infrastructure/service providers	<p>Information Technology (IT) services, including online services, software products and the facilities necessary for their operation and delivery</p> <p>Telecommunications providers and services (phone, internet, radio, cell phones etc.) and facilities necessary for their operation and delivery</p> <ul style="list-style-type: none"> Retail stores operated by a telecommunications provider or service may only permit members of the public to enter the premises by appointment and only for repairs or technical support <p>Newspapers, radio and television broadcasting</p>
Maintenance	<ul style="list-style-type: none"> Maintenance, repair and property management services that manage and maintain the safety, security, sanitation and operation of institutional, commercial, industrial and residential properties and buildings
Transportation services	<ul style="list-style-type: none"> Businesses and facilities that provide transportation services, including: <ul style="list-style-type: none"> Transportation services provided by air, water, road, and rail, including taxis and other private transportation providers, and Support services for transportation services, including: <ul style="list-style-type: none"> logistical support, distribution services, warehousing and storage, truck stops and tow operators, and services that support the operations and safety of transportation systems including maintenance and repairs Marinas, boating clubs and other organizations that maintain docking facilities for members or patrons with conditions Businesses that provide and support online retail, including by providing warehousing, storage and distribution of goods that are ordered online
Manufacturing	<ul style="list-style-type: none"> Businesses that extract, manufacture, process and distribute goods, products, equipment and materials, including businesses that manufacture inputs to other manufacturers (e.g. primary metal/ steel, blow molding, component manufacturers, chemicals, etc. that feed the end-product manufacturer), regardless of whether those other manufacturers are inside or outside of Ontario, together with businesses that support and facilitate the movement of goods within integrated North American and global supply chains
Agriculture and food production	<ul style="list-style-type: none"> Businesses that produce food and beverages, and agricultural products including plants, including by farming, harvesting, aquaculture, hunting and fishing Businesses that process, manufacture or distribute food, beverages, crops, agricultural products, animal products and by-products Businesses that support the food or agricultural products supply chains and the health and safety of food, animals and plants
Construction	<ul style="list-style-type: none"> Construction activities or projects and related services, including land surveying and demolition services, that: <ul style="list-style-type: none"> are associated with the healthcare sector or long-term care, including new facilities, expansions, renovations and conversion of spaces that could be repurposed for health care space ensure safe and reliable operations of, or provide new capacity in, <ul style="list-style-type: none"> municipal infrastructure, or provincial infrastructure, including but not limited to the transit, transportation, resource, energy, and justice sectors support the operations of, or provide new capacity in, electricity generation, transmission, distribution and storage, natural gas distribution, transmission and storage or in the supply of resources support the operations of, or provide new capacity in schools, colleges, universities, and child care centres within the meaning of the <i>Child Care and Early Years Act, 2014</i> are required for, <ul style="list-style-type: none"> the maintenance and operations of petrochemical plants and refineries, significant industrial petrochemical projects where preliminary work has already commenced before January 12, 2021, industrial construction and modifications to existing industrial structures limited solely to work necessary for the production, maintenance, or enhancement of Personal Protective Equipment, medical devices (such as ventilators), and other identified products directly related to combatting the COVID-19 pandemic would provide additional capacity in the production, processing, manufacturing or distribution of food, beverages or agricultural products. were commenced before January 12, 2021, and that would, <ul style="list-style-type: none"> provide additional capacity for businesses that provide logistical support, distribution services, warehousing, storage or shipping and delivery services, or provide additional capacity in the operation and delivery of Information Technology (IT) services or telecommunications services
Construction, continued	<ul style="list-style-type: none"> support the operations of broadband internet and cellular technologies and services are related to residential construction projects where, <ul style="list-style-type: none"> a building permit has been granted for single family, semi-detached and townhomes the project is a condominium, mixed-use or other residential building, or, or the project involves renovations to residential properties and construction work was started before January 12, 2021. prepare a site for an institutional, commercial, industrial or residential development, including any necessary excavation, grading, roads or utilities infrastructure are necessary to temporarily close construction sites that have paused or are not active and to ensure ongoing public safety are funded in whole or in part by: <ul style="list-style-type: none"> the Crown in right of Canada or in right of Ontario an agency of the Crown in right of Canada or in right of Ontario, or a municipality are: <ul style="list-style-type: none"> intended to provide shelter or supports for vulnerable persons or affordable housing; and being funded in whole or in part by, or being undertaken by: <ul style="list-style-type: none"> the Crown in right of Canada or in right of Ontario, an agency of the Crown in right of Canada or in right of Ontario, a municipality, a service manager as defined in the <i>Housing Services Act, 2011,</i> a registered charity and not for profit within the meaning of the <i>Income Tax Act (Canada), or</i> a not-for profit corporation Land surveyors <p><i>Enhanced with:</i></p> <ul style="list-style-type: none"> Workplace testing Additional enforcement to ensure compliance

Sector	Businesses, organizations and services permitted to open under the Provincewide Shutdown and any sector-specific public health and workplace safety measures
Resources and energy	<ul style="list-style-type: none"> • Businesses that provide and ensure the domestic and global continuity of supply of resources, including, resource exploration, mining, forestry, aggregates, petroleum, petroleum by-products and chemicals • Electricity generation, transmission, distribution and storage and natural gas distribution, transmission and storage
Community services	<p>Businesses that deliver or support the delivery of community services including:</p> <ul style="list-style-type: none"> • Sewage treatment and disposal • Collecting, transporting, storing, processing, disposing or recycling of any type of waste • Potable drinking water • Critical infrastructure repair and maintenance including roads, dams, bridges etc. • Environmental rehabilitation, management and monitoring, and spill clean-up and response • Administrative authorities that regulate and inspect businesses • Professional and social services that support the legal and justice system • Government services including but not limited to policing and law enforcement, fire and emergency services, paramedics, coroner and pathology services, corrections and court services, licences and permits • Allotment gardens or community gardens
Facilities for indoor or outdoor sports and recreational fitness activities	<ul style="list-style-type: none"> • Closure of all indoor and outdoor sports and recreational fitness facilities except for: <ul style="list-style-type: none"> ◦ Facilities operated or for the sole use of high performance athletes, including parasport athletes, and specified professional leagues (e.g., NHL, CFL, MLS, NBA) and ◦ Facilities opened solely for specified purposes (e.g. child care) • Community centres and multi-purpose facilities (e.g., YMCA) allowed to be open for permitted activities (e.g., child care services, mental health and addiction support services [limited to 10 people maximum], social services) • All subject to conditions
Outdoor recreational amenities	<ul style="list-style-type: none"> • No person is permitted to use an indoor or outdoor recreational amenity that is required to be closed • Outdoor recreational amenities permitted to open, subject to conditions, include: <ul style="list-style-type: none"> ◦ Parks and recreational areas ◦ Baseball diamonds ◦ Batting cages ◦ Soccer, football and sports fields ◦ Tennis, platform tennis, table tennis and pickleball courts ◦ Basketball courts ◦ BMX parks ◦ Skate parks ◦ Frisbee golf locations ◦ Cycling tracks and bike trails ◦ Horse riding facilities ◦ Shooting ranges, including those operated by rod and gun clubs ◦ Ice rinks ◦ Tobogganing hills ◦ Snowmobile, cross country, dogsledding, ice-skating and snow-shoe trails ◦ Playgrounds ◦ Portions of parks or recreational areas containing outdoor fitness equipment <p>Golf courses and driving ranges are closed Refer to subsequent slide for public health and workplace safety measures.</p>
Outdoor recreational amenities, continued	<p>A permitted outdoor recreational amenity may only open if:</p> <ul style="list-style-type: none"> • Any person who enters or uses the amenity maintains a physical distance of at least two metres from other person using the amenity (excluding members of the same household) • Team sports, or other sports or games where people may come within two metres of each other, are not practiced or played within the amenity • Any locker rooms, change rooms, showers and clubhouses remain closed, except to the extent they provide access to equipment storage, a washroom or a portion of the amenity that is used to provide first aid <p>Ski hills are closed</p>
Research	<ul style="list-style-type: none"> • Businesses and organizations that maintain research facilities and engage in research, including medical research and other research and development activities
Health care and social services	<ul style="list-style-type: none"> • Organizations and providers that deliver home care services or personal support services to seniors and persons with disabilities • Regulated health professionals • Professionals or organizations that provide in-person counselling services • Organizations that provide health care including retirement homes, hospitals, clinics, long-term care facilities, independent health facilities and mental health and addictions counselling supports • Laboratories and specimen collection centres • Manufacturers, wholesalers, distributors and retailers of pharmaceutical products and medical supplies, including medications, medical isotopes, vaccines and antivirals, medical devices and medical supplies • Manufacturers, distributors and businesses that provide logistical support of or for products and/or services that support the delivery of health care in all locations • Organizations that provide critical personal support services in home or residential services for individuals with physical disabilities • Organizations that support the provision of food, shelter, safety or protection, and/or social services and other necessities of life to economically disadvantaged and other vulnerable individuals • Businesses that are primarily engaged in the provision of health and safety training with conditions

Sector	Businesses, organizations and services permitted to open under the Provincewide Shutdown and any sector-specific public health and workplace safety measures
Media industries	<p>Sound recording, production, publishing and distribution businesses</p> <p>Film and television production, including all supporting activities such as hair, makeup and wardrobe:</p> <ul style="list-style-type: none"> No studio audiences permitted to be on the film or television set No more than 10 performers may be permitted to be on the film or television set Set must be configured and operated in such a way as to enable persons on the set to maintain a physical distance of at least two metres from other persons, except where necessary for the filming of the film or television production Persons who provide hair or makeup services must wear appropriate personal protective equipment Singers and players of brass or wind instruments must be separated from any other performers by plexiglass or some other impermeable barrier <p>Film and television postproduction, visual effects and animation studios</p> <p>Book and periodical production, publishing and distribution businesses</p> <p>Commercial and industrial photography</p> <ul style="list-style-type: none"> Does not permit retail studios to open <p>Interactive digital media businesses, including:</p> <ul style="list-style-type: none"> Computer system software or application developers and publishers, and Video game developers and publishers
Entertainment	<p>Concert venues, theatres and cinemas (includes drive in or drive through events)</p> <ul style="list-style-type: none"> Closed for all purposes, including rehearsing or performing a recorded or broadcasted event
Libraries	<p>Libraries may open:</p> <ul style="list-style-type: none"> For contactless curbside, delivery, and pick-up For permitted services (e.g., child care services, mental health and addiction support services to a limit of 10 persons [AA meetings], provision of social services) If they ensure that circulating materials returned to the library are disinfected or quarantined for an appropriate period of time before they are recirculated Contact information recording required

(出所: オンタリオ州政府 [Enhancing Public Health and Workplace Safety Measures in the Provincewide Shutdown](#))

(C) トロント市について

- 2020年11月13日トロントの保健所より発行された「トロント市における追加措置を伴う規制」は、その規制内容が現在施行中のオンタリオ州規制に網羅されているため、取り消された。
- トロント市保健所 (TPH: Toronto Public Health) は2021年1月4日、感染拡大の職場環境への影響を示すために、[監視ダッシュボード](#)への新しいコンテンツの公開を開始した。現在および過去の職場における新型コロナウイルス感染に関する事業セクターごとのデータを元に、調査結果と傾向を発表している。
- すべての職場における感染と確認されたケース発生は、以下の場合に限り、11セクター毎に1月7日より毎週木曜日に公開される。

【開示条件】

- ・ 職場において持続的に感染が続いている証拠がある場合
- ・ 顕著な割合の従業員が感染拡大に関与している場合
- ・ 感染拡大期間が顕著に長い場合
- ・ 職場規模が大きく、プライバシー懸念のリスクが低い場合

【事業セクター区分】

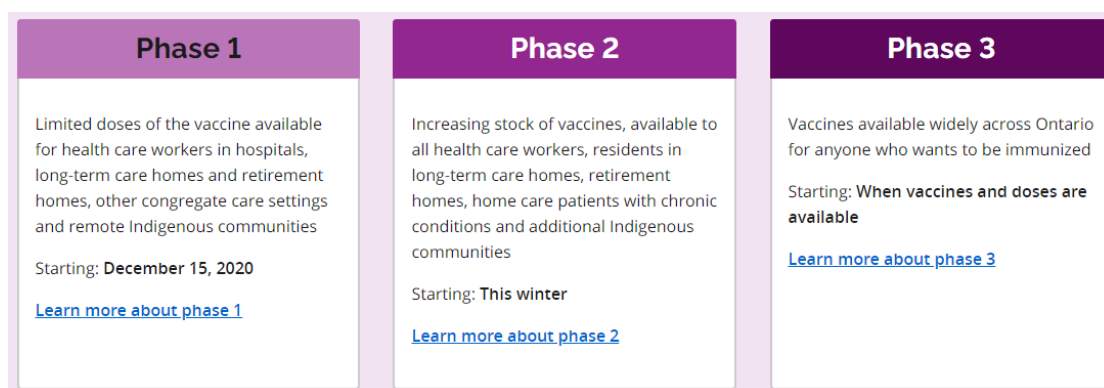
1. バー、レストラン、ナイトクラブ、その他の娯楽施設
2. イベント会場、宗教施設
3. 診療所、理学療法クリニック、歯科医院、ウェルネスクリニックなどの非施設医療サービス

4. 美容院、理髪店、タトゥー屋、ネイルサロン、スパなどのパーソナルサービス
 5. レクリエーションフィットネス施設、グループフィットネスクラス、チームスポーツおよび関連イベント
 6. 食料品店、薬局、モールなどの小売店
 7. 農場
 8. 食品加工工場
 9. オフィス、倉庫、出荷及び流通、建設、製造
 10. これらのカテゴリに含まれていない他の職場やコミュニティ
 11. その他
- TPH は州政府とともに、職場における感染蔓延を防止、管理する方法に関する広範なガイダンス文書を作成し、推進している。特定の職場環境やセクター向けのガイダンス文書の提供も含まれる。これらの文書はすべて「[Search for Guidelines & Resources](#)」より入手可能。
 - さらに、トロント市において感染の急激な増加が続いていることから、TPH は企業や組織に新しい要件を発行した。オンタリオ州再開法に基づいて事業を行うことを現在許可されている企業に[指示書](#)を発行、この書簡には、感染機会をさらに食い止めるために取るべき追加の措置が概説されている。

(出所：トロント市「[COVID-19: Guidelines for Businesses & Community Organizations](#)」)

III. ワクチン接種計画

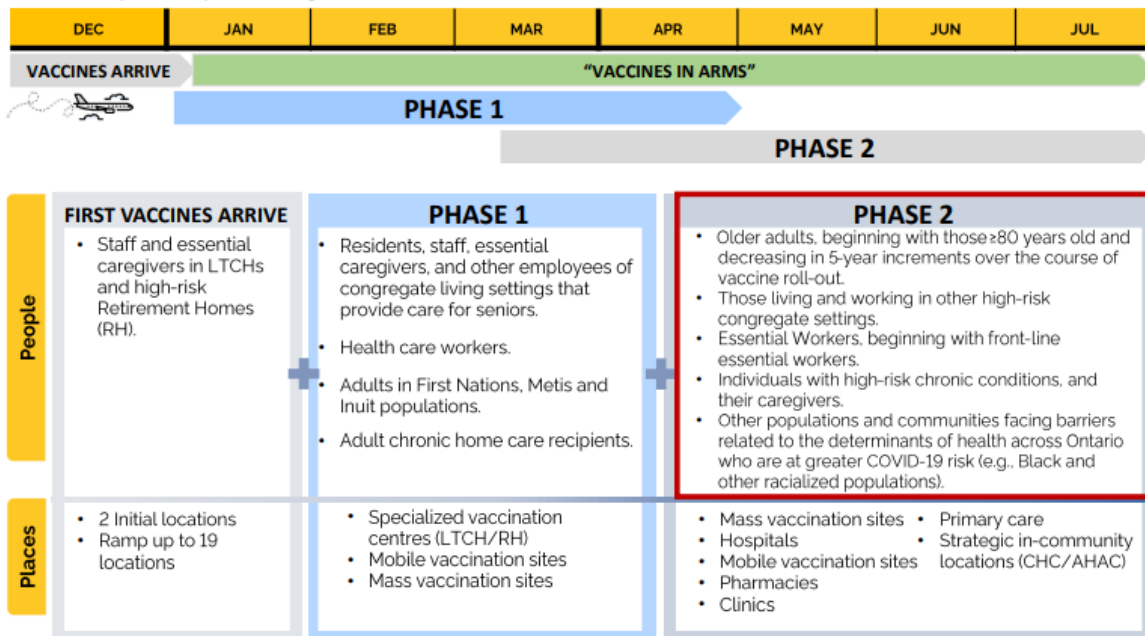
オンタリオ州では3段階に分け、以下の優先順位にて進めて行く計画。2月8日現在、同州は第一段階にある。



(出所：オンタリオ州政府 [Getting a COVID-19 vaccine in Ontario](#))

VACCINE DISTRIBUTION: PHASED PRIORITIZATION

- Vaccination rollout phases will be continuous and overlapping – Phase 2 vaccinations likely to begin while Phase 1 is still ongoing (e.g., vaccination of adults >80 may begin in parallel or before low-risk health care worker vaccination).
- Vaccination schedules are intended to be flexible and responsive to ongoing needs, vaccine logistics and risk factors.
- Ontario is ready to receive vaccines whenever they are available, and will shift to Phase 2 priority populations as soon as there are sufficient vaccines provided by the Federal government.



(出所：オンタリオ州政府 [COVID-19 Vaccination Update](#))

第一段階：準備パイロット

時期： 2020年12月14日～

オンタリオ州は、カナダ公衆衛生庁およびファイザー＝ビオテック製ワクチンの準備パイロットに参加。

- フェーズ1でより多くのワクチンを接種するための政府計画を通知
- 配送、ワクチンの保管と取り扱い、診療所の管理、ワクチン接種後の監視のロジスティクスをテスト
- 政府が将来の予防接種を改善に向け、予防接種を受けた人々の経験からの学習を目的として行われた。

対象： 長期療養所や病院でケアを提供する 2,500人以上の医療従事者

(トロントのユニバーシティヘルスネットワーク及びオタワ病院にて実施)

第一段階：準備パイロット後

時期： 2020年12月下旬～

オンタリオ州への割り当てられた以下のワクチンが17の病院へ配送される。

- ファイザー＝ビオテック製ワクチン 90,000回分
- モデルナ製ワクチン 50,000回分

対象： ・ 病院勤務者

・ 介護施設従事者

・ リタイアメントホーム従事者

- ・高齢者の世話をする施設に関わっている者

2021年1月下旬以降、さらに20の病院へワクチンが配送されて以降

- ・医療従事者
- ・不可欠な介護者
- ・介護施設及び老人ホームの居住者
- ・メティスとイヌイットの成人を含む、先住民のコミュニティに居住している先住民

第二段階

時期： より多くのワクチンの流通が可能になった段階。2021年冬期を想定。

- 対象：
- ・フェーズ1における接種対象者
 - ・追加の集合ケア施設（シェルターなど）
 - ・遠隔地域に居住する70歳以上

第三段階

時期： 予防接種を受けたいすべての国民がワクチンを利用できるようになる段階。

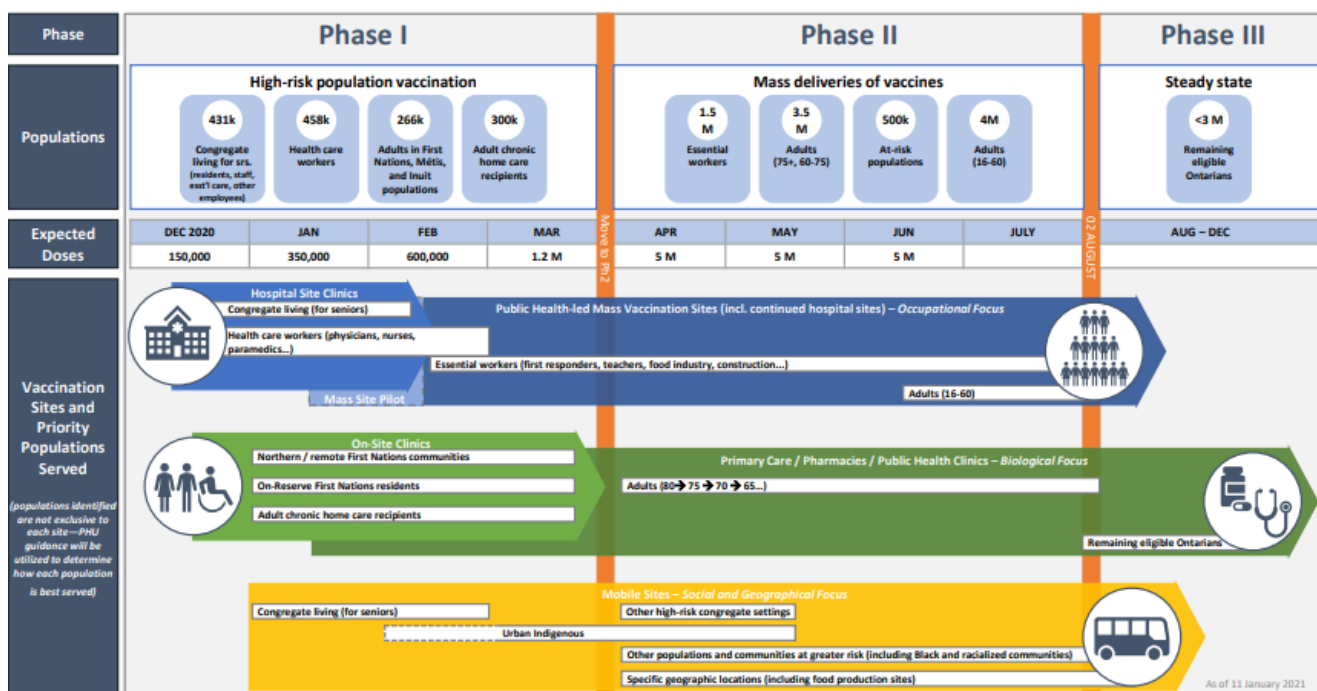
倫理的枠組み ([Ethical Framework for COVID-19 Vaccine Distribution](#))、データ、および利用可能なワクチン供給により、この段階における優先順位付けがなされる。

対象： 希望者全員

現在カナダにて承認されている2社のワクチン（ファイザー・ビオンテック製、及びモデルナ製）の投与計画は以下の通り。

COVID-19 VACCINE DISTRIBUTION PLAN

For deployment of Pfizer and Moderna vaccines



(出所：オンタリオ州政府 [COVID-19 Vaccination Update](#))

【免責条項】

本資料で提供している情報は、ご利用される方のご判断・責任においてご使用ください。ジェトロでは、できるだけ正確な情報の提供を心掛けておりますが、本資料で提供した内容に関連して、ご利用される方が不利益等を被る事態が生じたとしても、ジェトロは一切の責任を負いかねますので、ご了承ください。連邦政府及び州政府、自治体による規制や各種措置は感染拡大の状況等に応じて頻繁に更新されています。最新の内容がご利用される方が直接、連邦または各州政府にご確認されるようお願いいたします。