

JETRO

Japan External Trade Organization

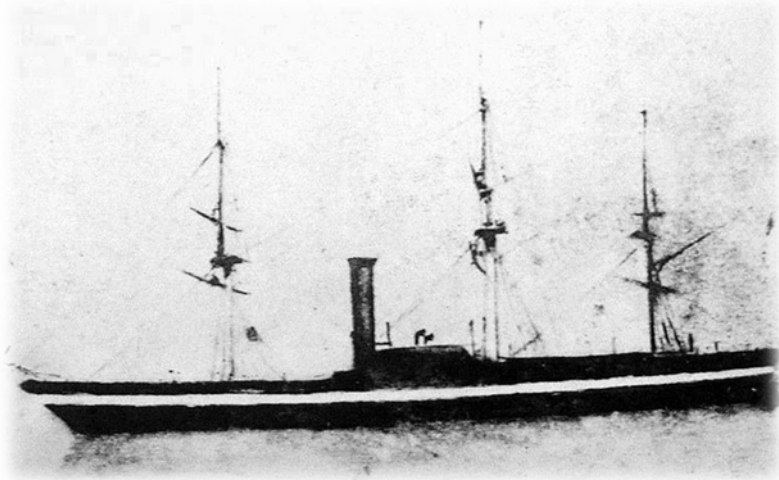
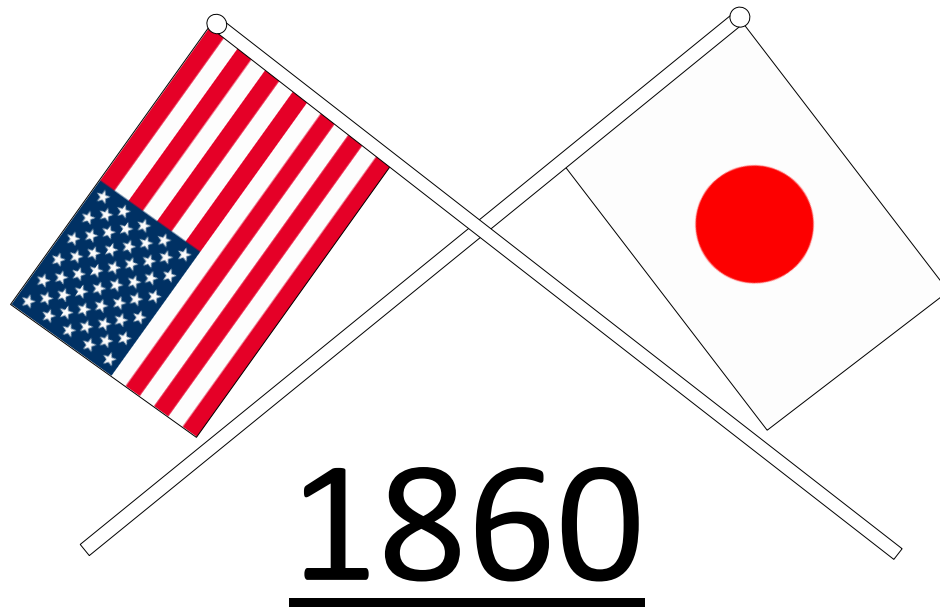


Japan-U.S. Business & Technology Symposium 2014

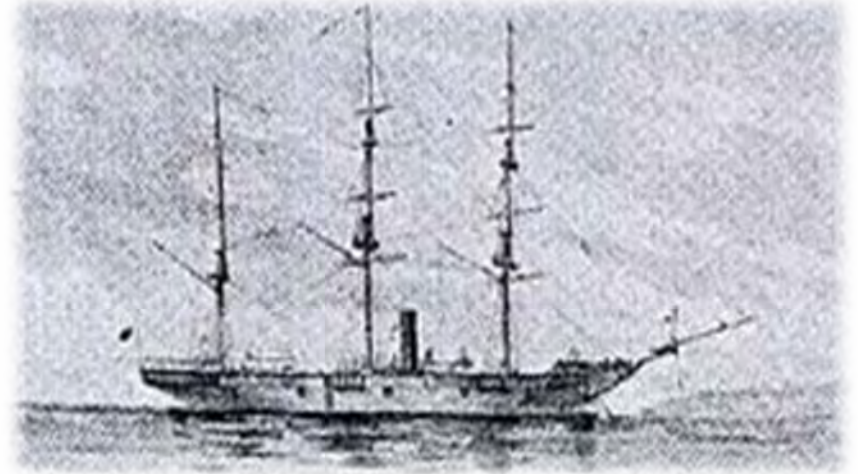
-Opportunities for Innovation: Getting More Involved with Japanese Business-

TSUNEYUKI KATO
Executive Vice President, JETRO

10th February, 2014



USS Powhatan



kanrinmaru

Strong economic relationship between the U.S and Japan

Japan's major export destinations (2013)

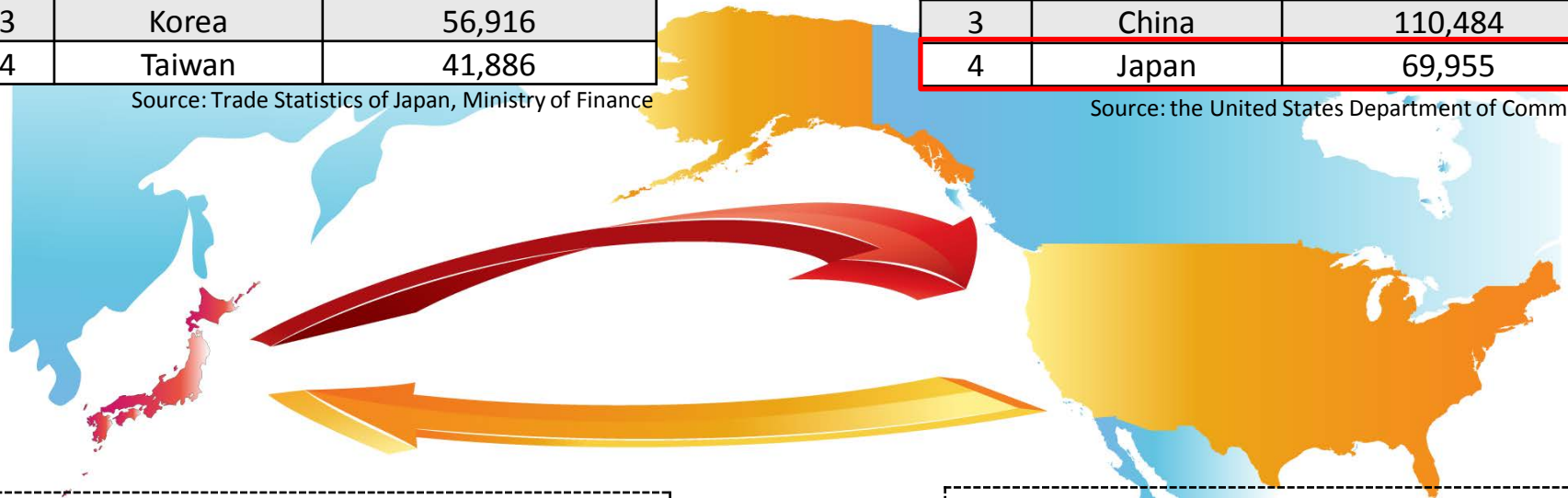
Rank	Country	Export Figures (Unit: US\$ million)
1	the United States	133,226
2	China	129,883
3	Korea	56,916
4	Taiwan	41,886

Source: Trade Statistics of Japan, Ministry of Finance

U.S. major export destinations (2012)

Rank	Country	Export Figures (Unit: US\$ million)
1	Canada	292,540
2	Mexico	215,931
3	China	110,484
4	Japan	69,955

Source: the United States Department of Commerce



Number employed by U.S. affiliates
in Japan(2011)

320,200

Source: the United States Department of Commerce

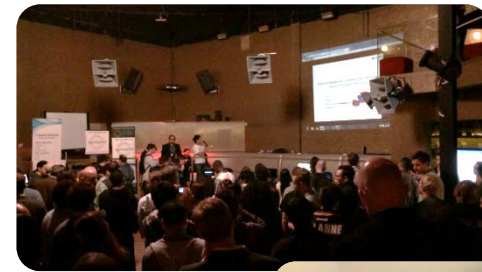
Number employed by Japanese affiliates
in the U.S.(2011)

686,600

Source: the United States Department of Commerce

JETRO Silicon Valley Innovation Program(SVIP)

- New support program for Japanese innovative SMEs launched in 2013
- 10 selected companies (Round 1)
- We offer
 - Mentoring Service
 - Workshops
 - Pitch events



Pitch event



Pitch coaching with a mentor

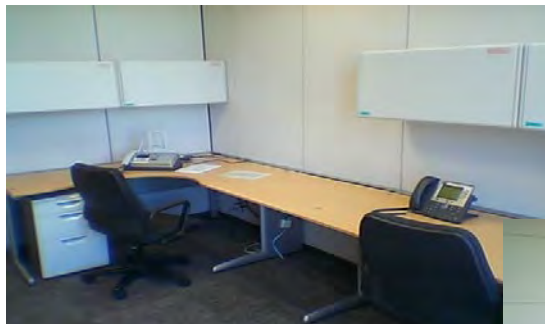


JETRO Invest Japan Business Support Center (IBSC)

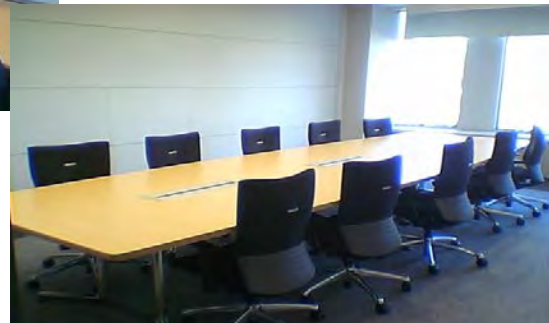
- JETRO IBSC (Invest Japan Business Support Center) is a one-stop center for establishing a business base and starting your business in Japan.
- Located in six major cities of Japan (Tokyo, Yokohama, Nagoya, Osaka, Kobe and Fukuoka).
- Temporary office space offered free of charge up to 50 business days.



Reception(Tokyo)



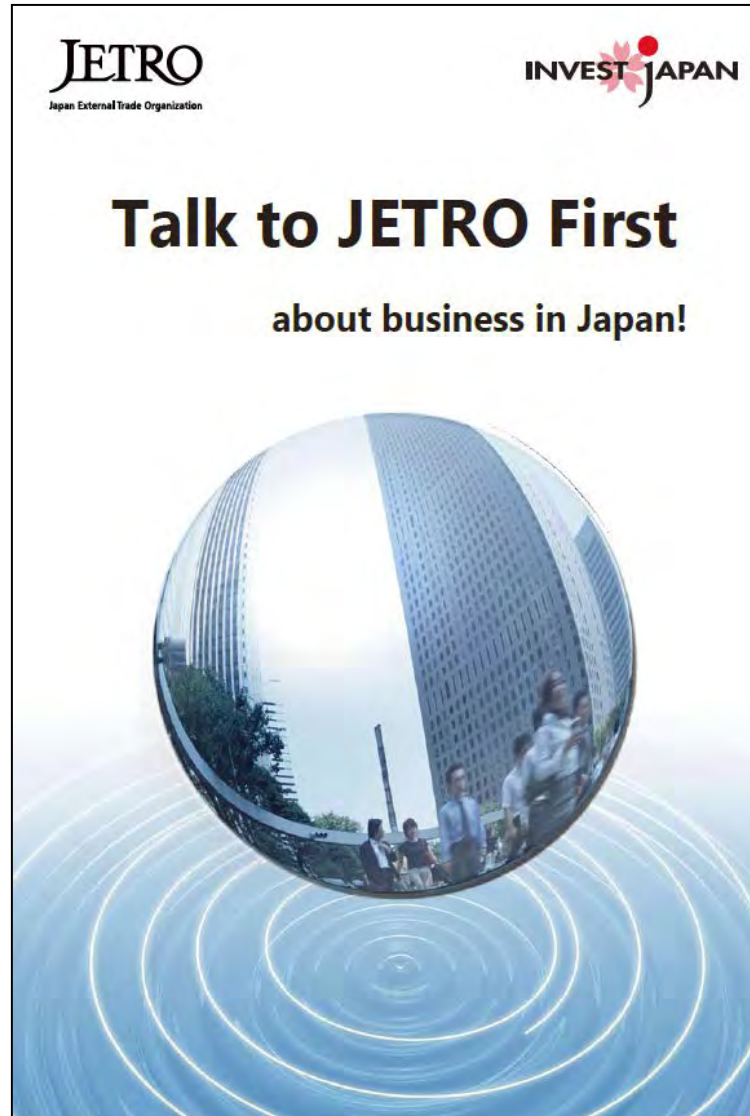
Private office space



Conference room



We look forward to assisting you!







Thank you all for your kind attention !



www.investjapan.org