

# Investment Climate in Kobe

**Kizo Hisamoto**  
**Mayor of Kobe**



1st MAY 2014

# The United Kingdom and Kobe, Japan - 1

The Old Foreign Settlement

1868



Now





# The United Kingdom and Kobe, Japan - 2



Kobe Regatta & Athletic Club

Now



*KRA&A Founder  
Alexander Cameron Sim*

# The United Kingdom and Kobe, Japan - 3

1901

Mt. Rokko & Kobe Golf Club



Now



# About Kobe



## Kobe

- 6<sup>th</sup> largest city in Japan
- Population: approx. 1.5 million
- Area: 550 km<sup>2</sup>
- GDP: approx. 6 trillion yen



# Today's Outline

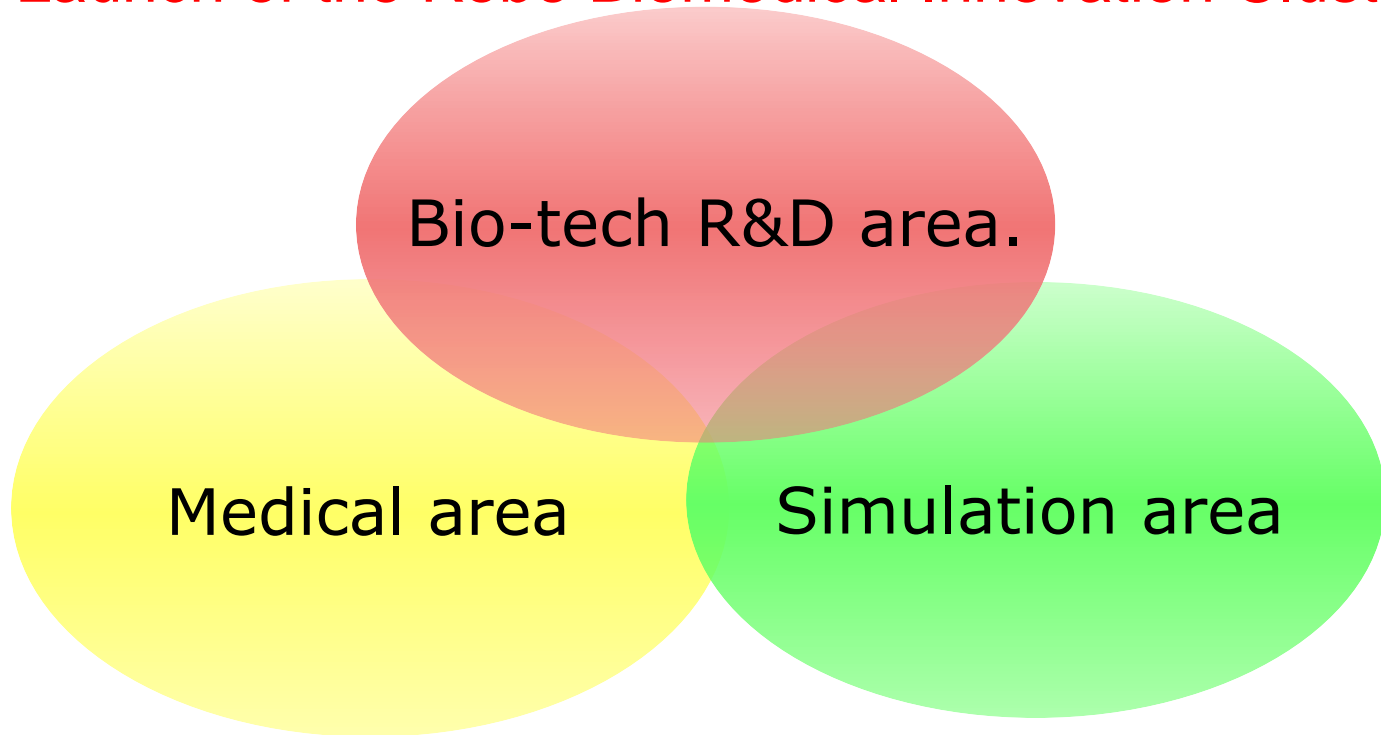
I . Kobe Biomedical Innovation Cluster  
(KBIC)

II . Kobe, A Great Place to Live and Work



# 1-① Kobe Biomedical Innovation Cluster (KBIC)

1998: Launch of the Kobe Biomedical Innovation Cluster



**No. of medical-related companies: 271**  
**No. of researchers and employees:**  
**approx. 5,900 people**

## 1-② Strategy of KBIC

Making a leading platform to bridge basic research and clinical application for industrial use



Accumulation of medical-related industries

Development of new businesses and/or innovative therapies



- **Revitalization of Kobe's economy and job security**
- **Enhancement of public health and welfare** through providing advanced medicine
- **International contribution** by improvement of medical standard in Asia



# 1-③ Location of KBIC

Shinkansen  
Bullet Train

To Osaka

Hankyu Line,  
JR Line,  
Hanshin Line

Kobe Biomedical  
Innovation Cluster

Kobe Airport

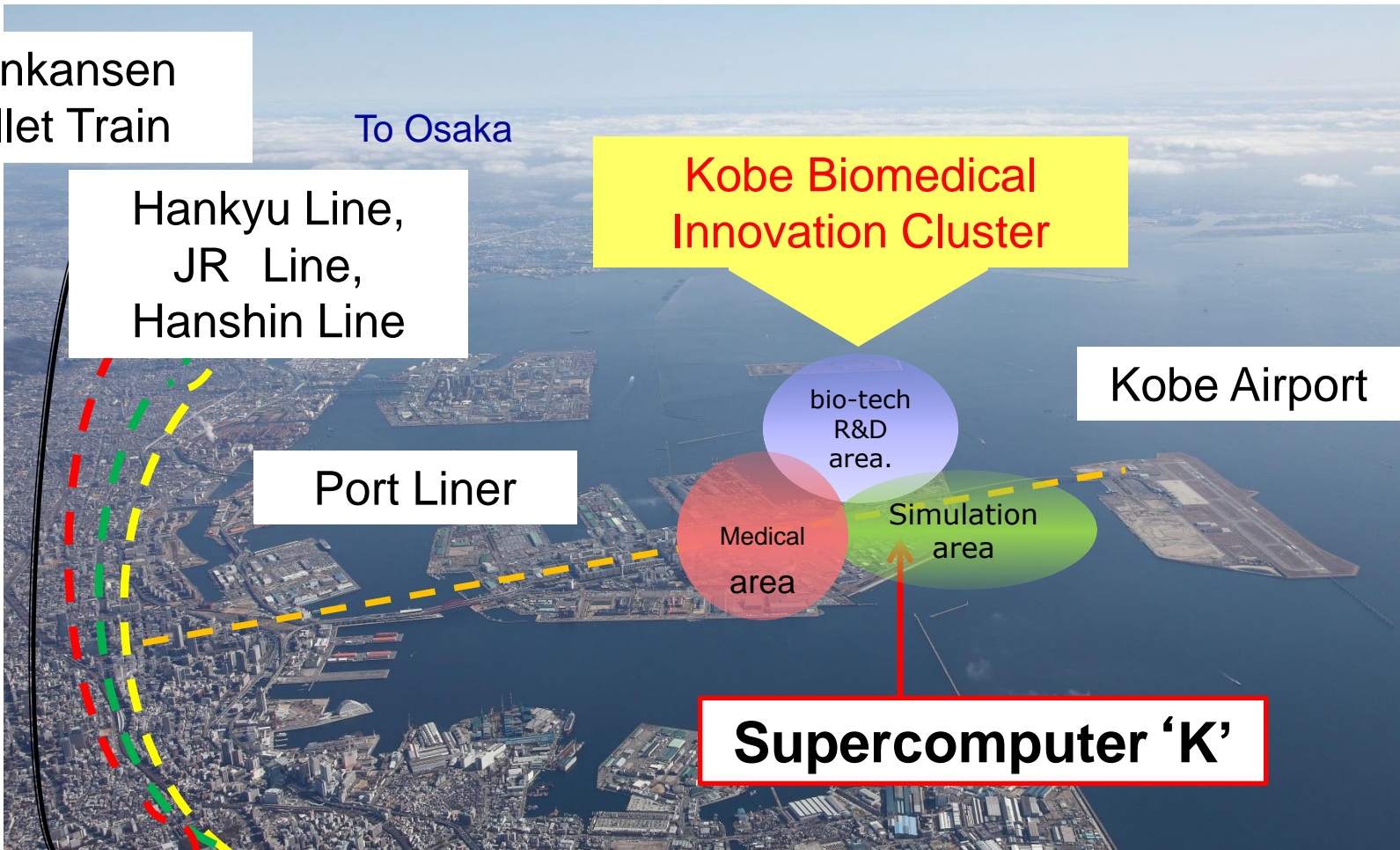
Port Liner

bio-tech  
R&D  
area.

Medical  
area

Simulation  
area

Supercomputer 'K'



# 1-④ Bio-tech R&D Area

**Institute of Biomedical Research and Innovation (IBRI)**



**Translational Research Informatics Center (TRI)**



**Kobe Medical Device Development Center (MEDDEC)**



**International Medical Device Alliance (IMDA)**



**Kobe Biotechnology Research and Human Resource Development Center (BT center)**





# 1 — ⑤ Medical Area (Accumulation of Highly Advanced Medical Institutions)



Kobe Minimally Invasive  
Cancer Center  
(open in Apr. 2013)



Kobe City Medical Center  
General Hospital  
(relocated in Jul. 2011)



Hyogo Prefectural  
Kobe Children's Hospital  
(Will be open in Spring 2016)



Nishi Memorial Port Island  
Hospital (open in Apr. 2013)



Child Chemo House  
(open in Apr. 2014)



Institute of Biomedical Research and  
Innovation (IBRI) (open in Mar. 2003)



Kobe International Frontier  
Medical Center (KIFMEC)  
(will be open in autumn 2014)



# 1-⑥Simulation Area

(The World's First Computer to Hit 10 Petaflops※)

The K computer is a wholly made-in-Japan supercomputer, from the R&D of the processors to system design and manufacturing.

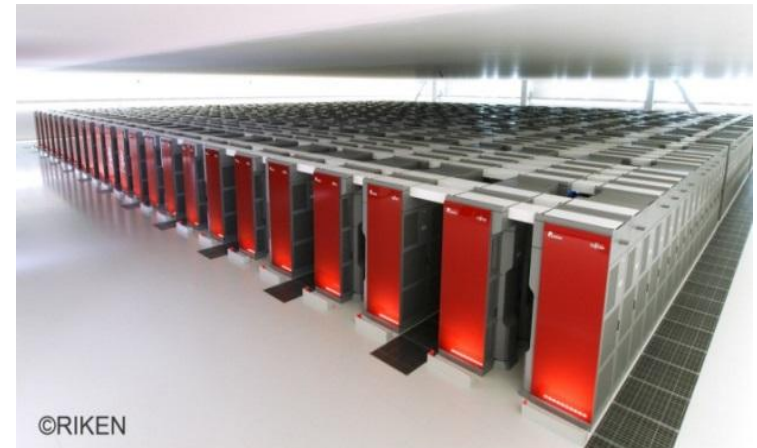
It is a general-purpose supercomputer.

※ 10 quadrillion calculations per second

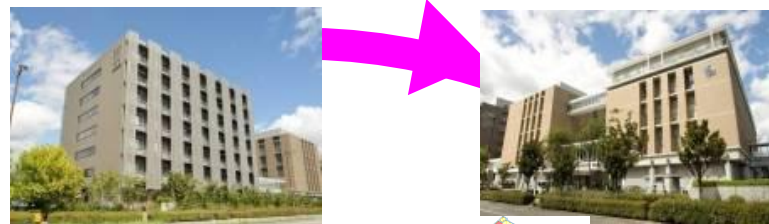


## Top5 of TOP500 List – June 2013

Country	Institute	PF (Efficiency)
1. China	Tianhe-2, China's National University of Defense Technology	33.86 (61.7%)
2. USA	Titan, Cray XK7, DOE/ SC/Oak Ridge National Laboratory	17.59 (64.9%)
3. USA	Sequoia, BlueGene/Q DOE/National Nuclear Security Administration/LLNL	16.32 (81.1%)
4. Japan	<b>K computer, RIKEN AICS</b>	<b>10.51 (93.2%)</b>
5. USA	Mira, BlueGene/Q, DOE/ SC/Argonne National Laboratory	8.16 (81.1%)



# 1 – ⑦ R&D in Regenerative and Cell Therapies



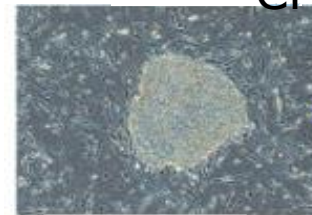
RIKEN CDB

IBRI

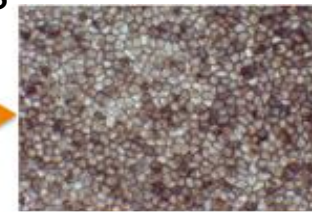
CPC's

## The World's First Clinical Study in iPSCs-Derived Transplantation

/ Tissue engineering with iPS cells for retinal disease  
(age-related macular degeneration)



iPS cell

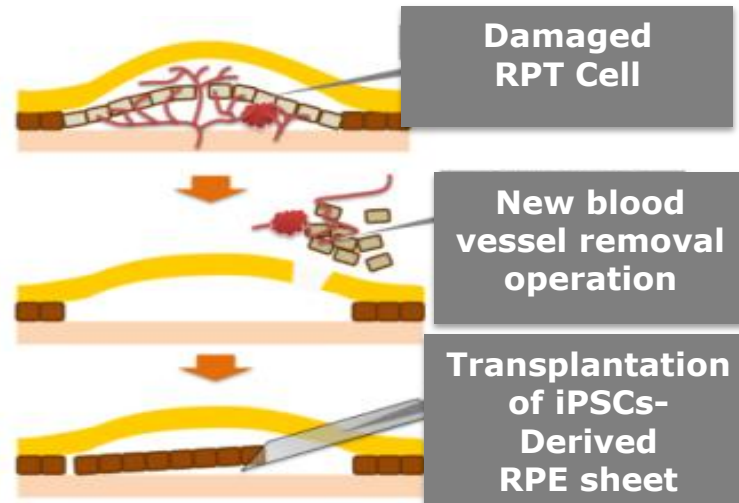


Retinal pigment epithelium (RPE)

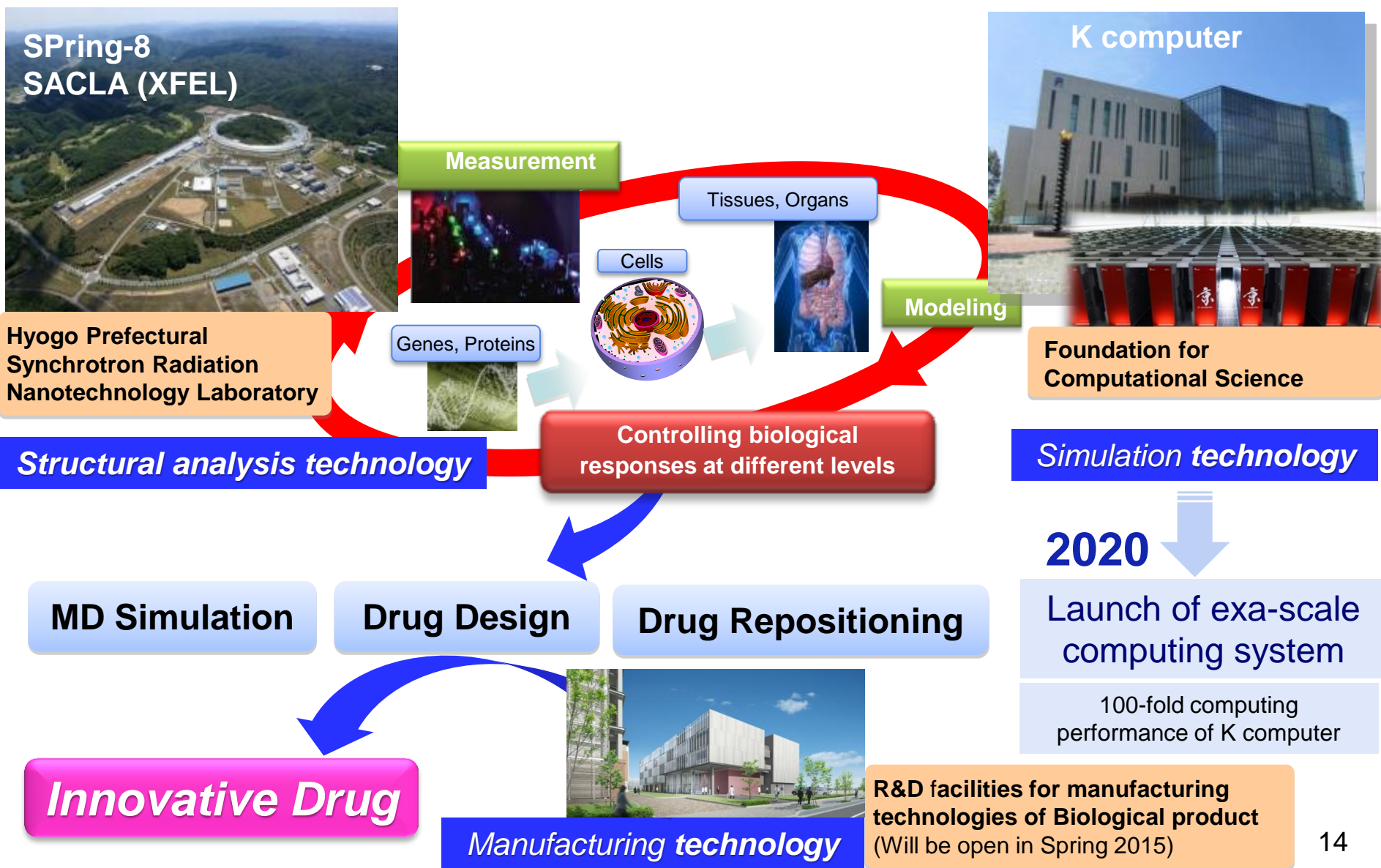


iPSCs-derived RPE sheet

iPS cells: induced pluripotent stem cells  
ES cells: embryonic stem cells



# 1 – ⑧ Innovative Drug Development





## 2 – ① A Great Place to Live

### **A variety of diverse living environments**

(Foreign schools, Medical institutions in various foreign languages, Numerous religious facilities, Immigrant communities, etc.)



**St. Michael's  
International School**



**Canadian Academy**



**Kobe Club**



**Blessed with a rich natural  
environment combining the  
beauty of the sea and  
mountains**



## 2 — ① A Great Place to Live



# Kobe Beef

*the most marbled steaks in the world*

## 2 – ② Foreign/Foreign-Affiliated Companies in Kobe

**242 enterprises from 29 countries and 1 region**

(as of April.2014)

**106 European Companies**

**▶ 15 British Companies**

Regus

AstraZeneca

Fluidix Inc.



Umicore Japan K.K.




Airbus Helicopters Japan Co., Ltd.



## 2 – ② Foreign/Foreign-Affiliated Companies in Kobe

### Japan HQ of world leading global companies

- **Eli Lilly Japan K.K**  Since 1965~  
“For more than 40years, we have grown our business in this attractive city, Kobe. ”
- **Nestlé Japan Ltd.**  Since 1922~  
“Kobe is forward-looking city blessed with nature and a wonderful living environment.  
We are pleased to chart our future growth here.
- **Procter & Gamble Japan K.K**  Since 1993~  
“A great environment for both Japanese and non-Japanese.  
Kobe is advantageous for recruiting valuable workers.”

## 2 – ③ Support for Foreign/Foreign-Affiliated Companies

Fixed assets tax, urban planning tax  
and business office tax

**Up to 90% OFF  
For 5-10years**

Fixed assets tax: levied on the land, structures, and depreciable assets you own

Urban planning tax: levied at a flat rate of 0.3% on the assessed value  
of the land or building.

Business office tax: levied against profit (income) after subtracting expenses.

## 2 – ③ Support for Foreign/Foreign-Affiliated Companies

### Office rent subsidy

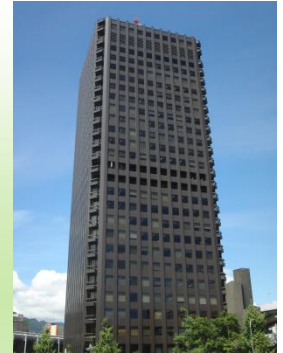
for foreign/foreign-affiliated companies

- Subsidy rate: 50% of rent
- Previous Limit: ¥1,500/m<sup>2</sup>/month , ¥2million/year  
(≡ £9/m<sup>2</sup>/month £11,000 /year)
- Period: 3 years

New Limit:

**UP to ¥11million /year**

(2013–2014 Only)





## 2 – ③ Support for Foreign/Foreign-Affiliated Companies

### Providing one-stop services



- Specialist support
- Temporary offices free of charge up to 100 days

An aerial photograph of a coastal city, likely Tokyo, viewed from a high vantage point. The foreground shows green, forested hills. The middle ground is filled with a dense urban landscape of skyscrapers and buildings. Beyond the city, a large body of water (the bay) is visible, with a long bridge or causeway extending into it. The sky is blue with scattered white clouds. Overlaid on the upper half of the image is the text "Thank you for your attention!" in a large, bold, red font.

Thank you for your attention!