

Food Products of KUMAMOTO(Kyushu)

- 2020 JETRO Food Export Business Meeting in Kumamoto -

Agricultural Products

-Kumamoto (Kyushu) is known for its abundance of high-quality rice, veggies, fruits such as noteworthy are Kyushu's tomatoes, strawberries, melons, sweet potatoes, pears, tangerines, and tea.
-Stringent quality control ensures product safety—Continuous quality control efforts are made in pesticide-free production



Source: the Kyushu Regional Agricultural Administration Office

Shochu/Sake

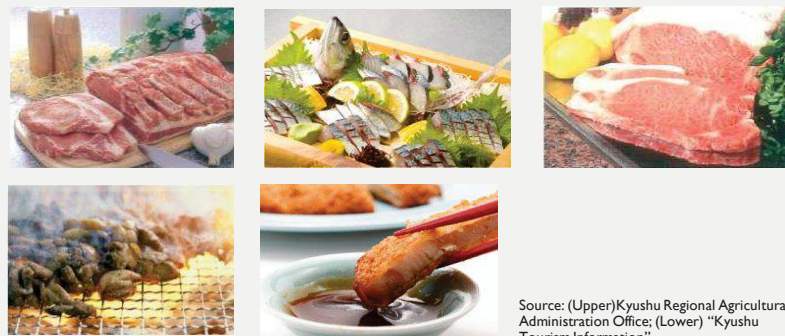
-Kumamoto (Kyushu) is a major production center for Shochu, a distilled alcoholic beverage.
-Shochu is produced from a variety of ingredients, including rice (Kuma Shochu) barley (Iki Shochu), and sweet potatoes (Satsuma Shochu).
-Shochu produced in Kyushu has international brand protection by WTO's designation of its place of origin.
-Sake is produced mainly in northern and central Kyushu.



Photos taken from the website "Kyushu Tourism Information"

Livestock/ Fisheries

-Branded livestock products: Beef, pork, chicken, and eggs.
-Fisheries products highly evaluated abroad: Yellowtail, mackerel, sea bream, and seaweed



Source: (Upper)Kyushu Regional Agricultural Administration Office; (Lower) "Kyushu Tourism Information"

Processed Food

-Processed foods made from a variety of livestock/fisheries products in Kyushu using high-quality water
<Examples>
-Rich and savory condiments (soy source, miso...)
-Variety types of sweets, both Japanese-style & Western confectionery
- Juice, dairy products, wheat flour.
- Noodles featuring pork bone broth(Tonkotsu)



Source: "Kyushu Tourism Information"

where's KUMAMOTO? 🐼

- Located at the center of Kyushu Island.
- Leading farming region...the 6th largest agricultural output in 47 prefectures in Japan.
- Produce a wide variety of processed food from diverse local ingredients
- Yield and produce food with abundant groundwater from Aso, certificated Global Geopark
- Groundwater covers entire water supply of Kumamoto city.



KYUSHU Island

- The gateway to Asia...located in the southwestern part of Japan
- One of leading farming regions with 1.7 billion USD agricultural output, 20% of the total in Japan.
- Area: 39,599 km² (the same size as Switzerland)
- Population: 13.2 million (approx. 10% of Japan's population)
- Gross regional product: approx. US\$400 billion (equivalent to the GDP of Turkey or Belgium)



FYI 🐼

Click the link below for further information on food culture, natural attractions, and the history of Kumamoto and Kyushu.

Kyushu Tourism Info (JP, EN, KR, CH, TH)

<http://www.welcomekyushu.jp/>

Official Kumamoto Tourism Guide(JP, EN, KR, CH, GE, FR)

<http://kumanago.jp/>

**Don't miss the opportunity
to Discover
Kyushu Food Product!**