




InnoTrans 2024

24-27 SEPTEMBER - BERLIN

*JORSA Member
Exhibitor's Guide*



A full-page background image featuring a bright yellow Shinkansen train traveling across a concrete viaduct. The train is sleek and aerodynamic, with a dark blue stripe along its side. Below the bridge, a vast field of sunflowers in full bloom stretches across the foreground, their bright yellow heads and green leaves creating a textured, vibrant base. In the background, blue mountains are visible under a sky filled with soft, white clouds. Overhead power lines and support structures are visible above the train.

Japan Overseas Railway System Association (JORSA) has been participating in InnoTrans Exhibition every time since 2002 together with Japanese major railway manufactures and operators.

For this InnoTrans 2024, JORSA is participating at Hall 7.2a again together with 16 companies, which are JORSA's 13 manufactures, 1 railway operator (Tokyo Metro), 1 Japanese ODA executing agency (JICA) and 1 Japanese railway technical research institute (RTRI).

Come and touch Japan-Quality & Culture!

We heartly welcome you to our JORSA Pavilion at Hall 7.2a.

Contents

	Hall	Booth No.	Page
Japan Overseas Railway System Association (JORSA)	Hall 7. ^{2a}	500-01	P.03
JORSA Pavilion Exhibitors Floor Plan	Hall 7. ^{2a}		P.06
Tokyo Metro Co., Ltd.		500-02	P.08
Nabtesco Corporation		500-03	P.09
The Kinki Sharyo Co.,Ltd.		500-04	P.10
NIPPON STEEL CORPORATION		500-05	P.11
Railway Technical Research Institute		500-06	P.12
Nippon Signal Co.,Ltd.		500-07	P.13
TOYO DENKI SEIZO K.K.		500-08	P.14
Japan International Cooperation Agency (JICA)		500-09	P.15
Taisei Techno Co., Ltd.		500-10	P.16
Kyosan Electric Mfg. Co., Ltd.		500-11	P.17
Mitsubishi Heavy Industries, Ltd.		500-12	P.18
NKK SWITCHES CO., LTD.		500-13	P.19
DAIDO CASTINGS CO.,LTD.		500-14	P.20
Suganuma Co., Ltd.		500-15	P.21
JCW. Co., Ltd.		500-16	P.22
TOHO SHEET & FREAME CO.,LTD		500-17	P.23
Japan Transport Engineering Company (J-TREC)	Hall 2. ²	530	P.26
Hitachi, Ltd.	Hall 4. ²	430	P.28
Mitsubishi Electric Corporation	Hall 9	440	P.30
Fuji Electric Co., Ltd.	Hall 17	230	P.32

JORSA

Hall 7.^{2a}

Booth No.

500-01

Japan Overseas Railway System Association (JORSA)

JORSA Profile

Japan Overseas Railway System Association(JORSA) was established in1953 as a specially authorized organization under the Export and Import Transaction Act of Japan.

JORSA is an umbrella organization consisting of 38 leading Japanese manufacturers and trading companies in the railway industry, covering whole railway system such as rolling stock, electrical equipment and signaling system etc.

JORSA promotes not only to provide Japanese latest railway systems but also to cooperate to the countries of the world through transferring technology and know-how together with JORSA members.

Mission

● JORSA's organizational purpose and activities are as follows.

- Purpose

To prevent unfair export transactions, ensure the orderly conduct of export and import transactions, and enhance the common interests of association members, thereby promoting the sound development of export trade of railway-related products such as rolling stock, electrical products, signaling system and other components.

- Activities

1) Market Research and Information Service

-Publication of the Railway Market Handbook series country-by-country

2) Publication and Public Relations Activities

-JORSA quarterly magazine

-Japanese Railway Information, a technical information bulletin

-Subject-specific booklets for overseas

-JORSA website

3) Overseas Exhibitions

4) Enhancement of Export Capabilities

-Overseas Seminars and Study Tour

-Invitation of Foreign Dignitaries

-Invitation of Railway Personnel from Overseas

5) Trade Insurance



JORSA Pavilion at InnoTrans 2022



Overseas Study Tour



Shop Survey for Training





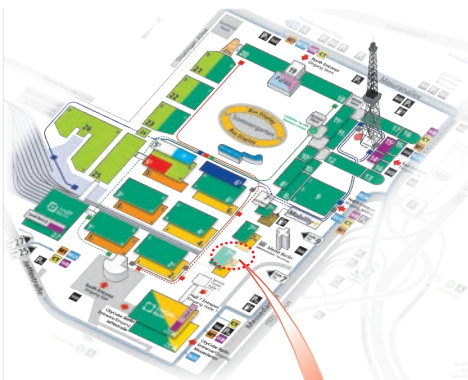
InnoTrans 2024
JORSA PAVILION

JAPAN Day Reception

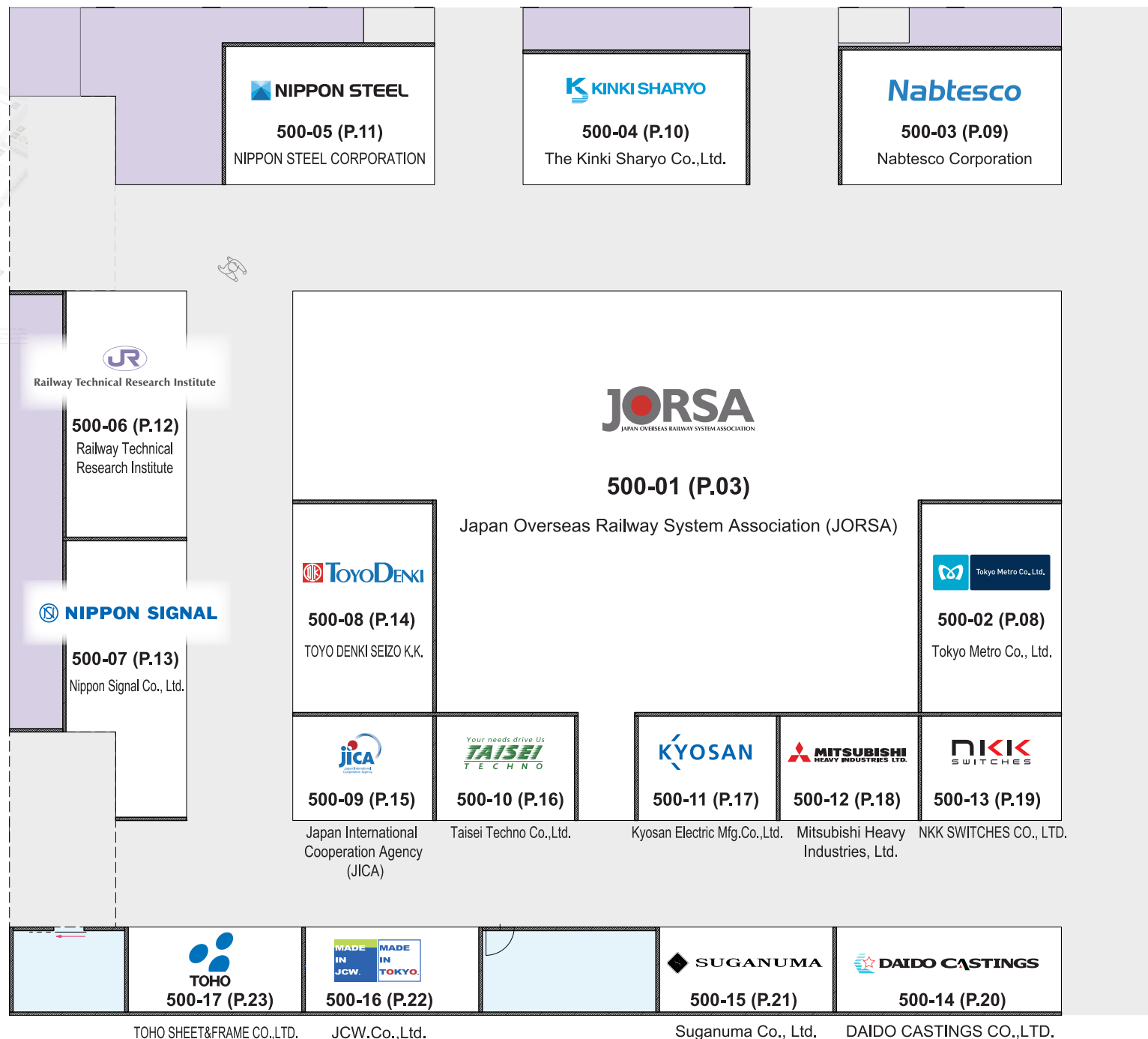
Wed, Sept. 25, 2024 16:30~18:00

Welcome to JORSA Pavilion Hall 7.^{2a}

Floor Plan



Hall 7.2a





Company Profile

Keeping Tokyo on the Move

Tokyo Metro operates a 195 km subway network with nine lines and 180 stations in and around Tokyo, including the first subway line to open in Asia in 1927. An average of 6 million passengers use our services every day. With customer's safety as a top priority, Tokyo Metro is determined to further improve safety and service quality. In addition, Tokyo Metro is committed to developing non-railway businesses that support customers' daily lives.



Ginza Line Shibuya Station



New Rolling Stock Series 18000

Expanding abroad from Tokyo

Drawing on its extensive experience accumulated over nearly a century, Tokyo Metro is actively participating in overseas railway projects and contributing to the sustainable development of cities around the world. Our overseas business includes technical consulting, railway training, as well as operation and maintenance. In the training business, we offer "Tokyo Metro Academy" online courses and training in Tokyo to railway operators worldwide.



"Tokyo Metro Academy" Training in Tokyo

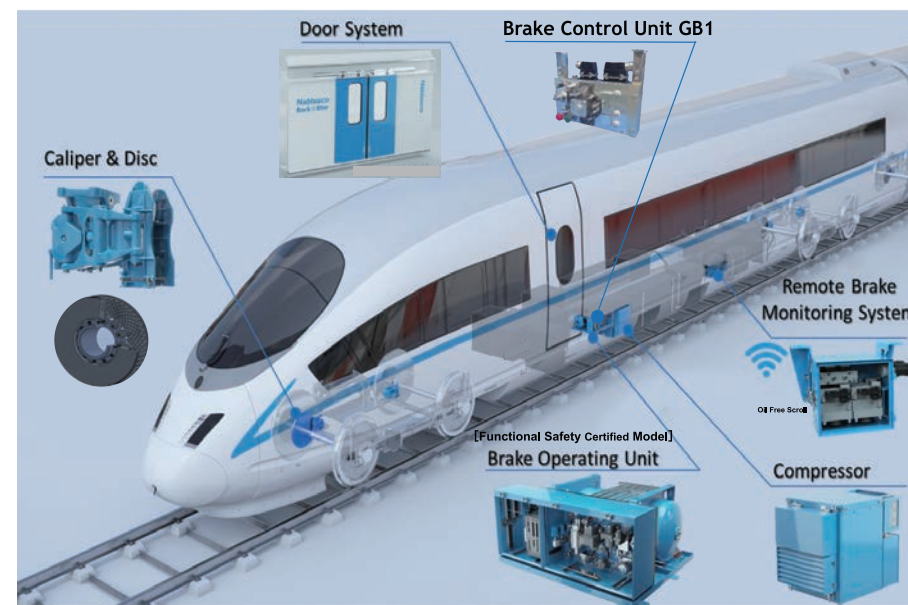


Company Profile

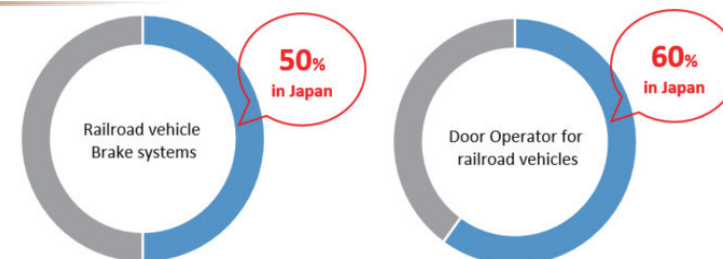
As a leading global partner with best solutions, Nabtesco creates the value of safety, comfort and a sense of security in arrange of social infrastructure-related fields with unique motion control technology.

In InnoTrans 2024 Nabtesco is aiming to be your valued partner and would like to introduce our latest railroad products with world top class technology and quality.

Main Products



Market Share



Company Profile

Since its establishment in 1920, The Kinki Sharyo Co., Ltd. has been perfecting its manufacturing of rolling stock. Our railcars are engineered to the highest standards of quality, safety and comfort to satisfy the diverse demands of our customers and the general public. Kinki Sharyo continues to receive praise, not only in Japan but also internationally, as evidenced by the many awards such as the "Brunel" and the "Good Design" award and from the increasing expansion of our exports worldwide.

Our rolling stock has provided safe and reliable transportation for millions of people worldwide.



W7 Series Shinkansen Super Express.



Doha Metro Driverless EMU for Qatar Rail.



P3010 Light Rail Vehicle Los Angeles Metro.



Cairo Metro Line 4 EMU



SP 1900 EMU MTR Hong Kong.



Series 6500 Metro Train, TOEI MITA Line Tokyo.



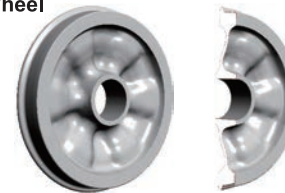
Dubai Metro Driverless EMU.

Company Profile

With manufacturing bases in Japan and 15 countries or more worldwide, Nippon Steel Corporation is Japan's largest steelmaker and one of the world's leading steel producers. With the aim of continually growing to become the "best steelmaker with world-leading capabilities," we will pursue world-leading technologies and manufacturing capabilities and contribute to society by providing excellent products and services. We are the only manufacturer of railway wheels in Japan. By providing high-quality wheels for many years, we have won the trust and high esteem of customers. Our new technologies are highly regarded at home and abroad, and our wheels are widely used throughout the world.

Products : Wheel, Axle, Gear Unit, Bogie, Coupler, Rail

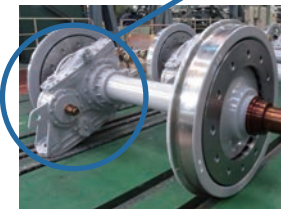
Wheel



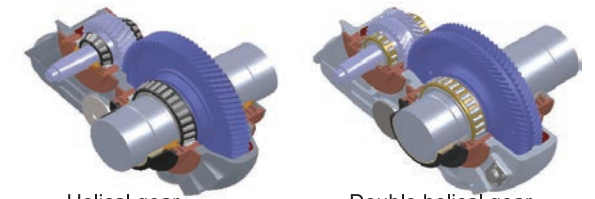
Bogie



Wheel and Axle



Gear Unit



Helical gear

Double helical gear

Rail



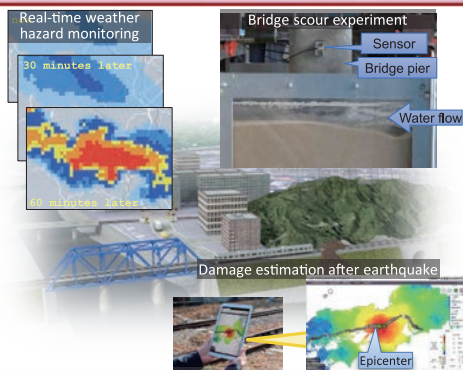


Company Profile

The Railway Technical Research Institute (RTRI) provides technical solutions from its wide range of research and innovation activities focusing on:

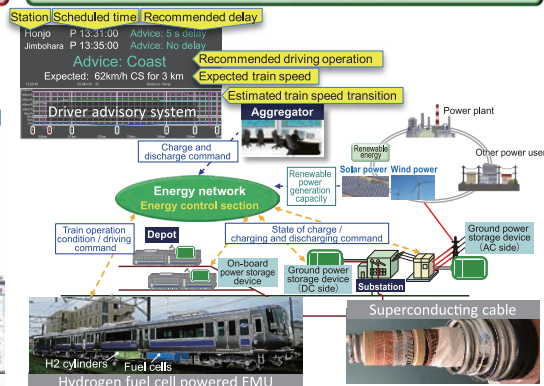
- Improvement of safety,
- Harmony with the environment,
- Cost reduction,
- Improvement of convenience, and
- Sophistication of simulation technologies.

Improvement of safety



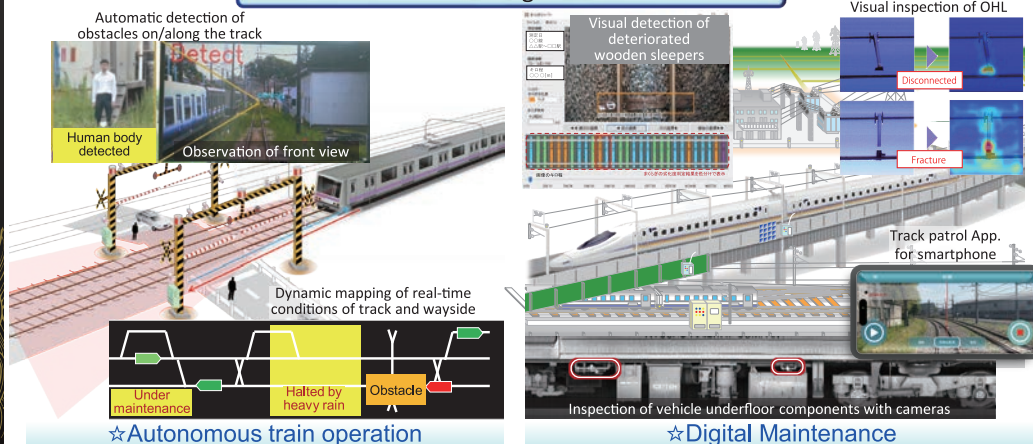
★Enhancement of railway system resilience against severe natural disasters

Harmony with the environment



☆Decarbonization of whole railway systems

Cost reduction with Digital Transformation



☆Autonomous train operation

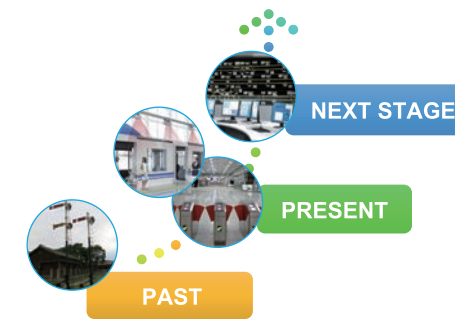
☆Digital Maintenance



Company Profile

With safety and reliability being the core values, Nippon Signal contributes to the development of transportation infrastructure since its establishment in 1928. We are now expanding the business in over 30 countries and regions.

Latest Products & Developments



NEXT STAGE SOLUTIONS:

Next Train Control System

- Unattended Train Operation
- CBTC (Communication-based Train Control)

MaaS Platform

- Account Based Ticketing
- Platform Screen Door

Operation and Maintenance

- Remote Maintenance System

Supply Record / Technical Expertise

Middle East and Africa

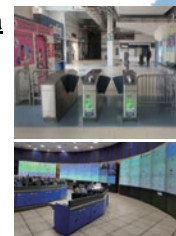
- ◎ Egypt
- ◎ Turkey
- ◎ Uganda

Our Presence

East Asia

- ◎ China
- ◎ South Korea

India



Taiwan



Bangladesh



South East Asia

- ◎ Indonesia
- ◎ Philippines
- ◎ Thailand
- ◎ Vietnam



Company Profile

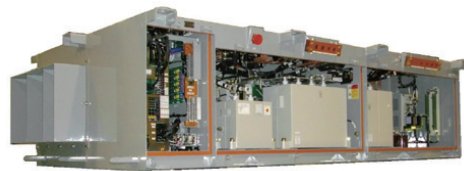
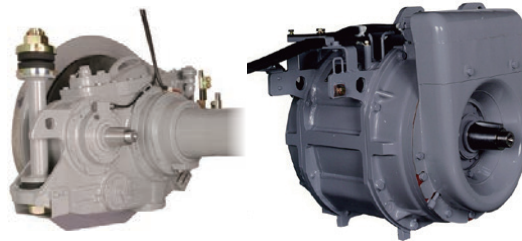
Based on our core technology “driving & control”, we are a manufacturing company specialized in electrical engineering, having engaged in the business of making train motivated since 1918.

**Traction Inverter**

Metro : capacity up to 4x 200 kW traction motor with underfloor-suspended natural-cooled.
Light Rail : capacity up to 2x 150 kW traction motor with roof-mounted forced-cooled.

Traction Motor & Drive Gearbox

AC 3 phase squirrel-cage induction motor
High Speed : capacity up to 305 kW.
Metro : capacity up to 270 kW.
Light Rail : capacity up to 100 kW.

**Auxiliary Power Supply**

High Speed: capacity up to 35 kVA with underfloor-suspended forced-cooled.
Metro : capacity up to 260 kVA with underfloor-suspended natural-cooled.

Current Collector

High Speed: capacity up to 1000A at 320 km/h spring-raised pneumatic-lowered.
Metro : capacity up to 1600A at 160 km/h spring-raised pneumatic-lowered.

**Agency Profile**

JICA is one of the world's largest bilateral aid agencies and is responsible for administering Japan's Official Development Assistance (ODA). It cooperates with developing countries in addressing their development challenges through various modalities, such as Technical Cooperation, Finance and Investment Cooperation, and Grants.

Railway Masterplan, Bangkok, Thailand
(Technical Cooperation)

Cooperation for railway masterplan formulation in Bangkok with the government of Thailand. The masterplan forecasts future vision of the railway network of Bangkok Metropolitan Region.



Image of routes that proposed and agreed during the project.

*Green-highlighted countries - countries which JICA supported/ is supporting



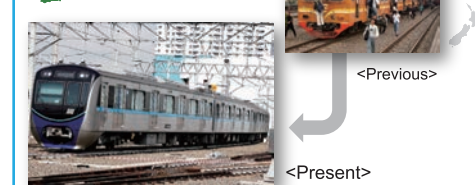
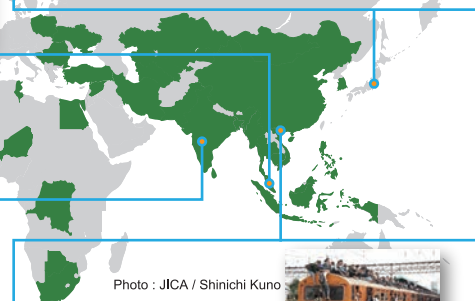
First women train operators in the country

MRT, Dhaka, Bangladesh (Finance)

Finance for the construction of Metros in Dhaka. MRT, started its operation in 2022, contributes to the economic growth and women empowerment.

**Knowledge Co-Creation Program in Japan**
(Technical Cooperation)

Comprehensive training program in Japan for government officials and railway operators to establish safer and more reliable railway system in various countries.

**MRT, Jakarta, Indonesia (Finance)**

Finance for the construction of MRT in Jakarta. It started its operation in 2019 and is “All-Japan”, which means civil works, rolling stock delivery and electrical and mechanical systems have all implemented by Japanese firms.

<More information>



Hall 7.2a

Booth No.
500-10

Your needs drive Us
TAISEI
TECHNO
Taisei Techno Co., Ltd.

Company Profile

Taisei Techno Co., Ltd. has continued to use its technologies and expertise to meet challenges in new business sectors.

Many of our products are electrical equipment that involves air flow handling.

We are a R&D-oriented company with applied cutting-edge technologies.

Products



Wind turbine generators



Air cleaner



Comfort sensor



Roll filter unit



Fan forced heater

By combining the potential of its wind turbines with the electrical energy storage technology it has developed over the years, plus solar panel, Taisei Techno now has technology that can supply renewable energy—all the energy needed to power station facilities and operate a train.

Contact

<https://www.taiseix.net>



Hall 7.2a

Booth No.
500-11

KYOSAN

Kyosan Electric Manufacturing Co., Ltd.

Company Profile

Over 100 Years of Excellence, Creativity and Pride

Since our establishment in 1917, Kyosan Electric Manufacturing Co., Ltd. has provided various railway signaling systems to valued customers around the world and is now extending our business area to the global market. We have been introducing leading innovation to the world. With a focus on safety and the anticipation of future needs, our cutting-edge technologies aim to enhance lifestyles worldwide.



With over 100 years of experience, we are committed to delivering value through a fuse of expertise and creative innovation. We look forward to the opportunity of introducing you our products and service.



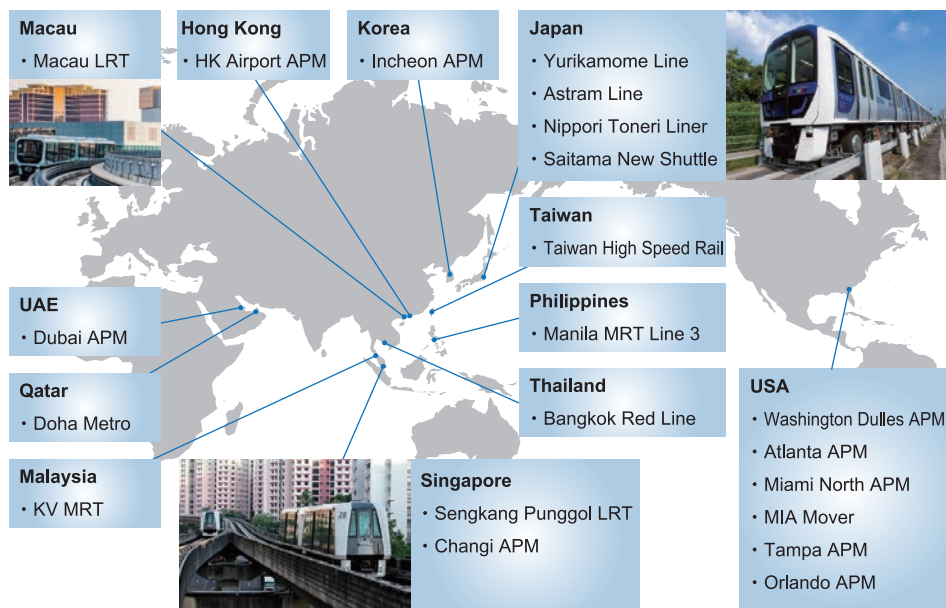
Company Profile

Mitsubishi Heavy Industries (MHI) Group is one of the world's leading industrial groups, spanning energy, smart infrastructure, industrial machinery, aerospace, and defense. MHI Group combines cutting-edge technology with deep experience to deliver innovative, integrated solutions that help to realize a carbon neutral world, improve the quality of life and ensure a safer world.

PR

MHI will utilize its extensive track record providing Automated Guideway Transit (AGT) systems in Japan, Singapore, Macau, USA, and other areas throughout the world, along with the strength of its high-quality O&M (operations and maintenance) services to compete for the lead in the market for new transport system in Japan and overseas.

Our Delivery Record



Company Profile

NKK Switches has been a global leader in engineering and manufacturing industrial quality switches for over 70 years. Customers in Japan and abroad place their trust in our HMI solutions to achieve their visions.

Products

■ TB01 Series – Accessible Design Switch

The TB01 series is mainly used for opening and closing the doors of passenger coaches and other rolling stock. With its excellent waterproof and dustproof design, this high-performance switch provides stable operability and contact reliability even in harsh environments.

Large buttons for smooth operation, pictograms with raised surfaces, and easy-to-recognize bezel colors contribute to an accessible design that is highly visible and user-friendly.



■ NKK Switches – Full Lineup

Contact us to learn more about our wide variety of industrial switches.



Company Profile

Our company is a cast steel product manufacturer that was spun off as an independent company in 2002 from Daido Steel, a global specialty steel manufacturer.

We produce a wide variety of cast steel products, ranging from grams to kilos and tons, such as turbine wheels and turbine housings for turbochargers, manganese crossings for railways, and cast steel rolls for steel manufacturing.

Our manganese crossing has a history of over 100 years, and we are the only cast crossing manufacturer in Japan. We have a 100% share in Shinkansen crossings. Our products have high technology, high quality and high safety.

Manganese steel has a hard surface layer that is hard and wear-resistant due to impact hardening, but the inside layer is soft and tough, making it difficult to break. Therefore, manganese crossings have a longer lifespan and are safer than carbon steel rail assembly type crossings.

PR

- Display of JIS60K8# rigid double slope crossing with the adhesive jointed end leg rails.
- Demonstration of ultrasonic flaw detection equipment for manganese steel.

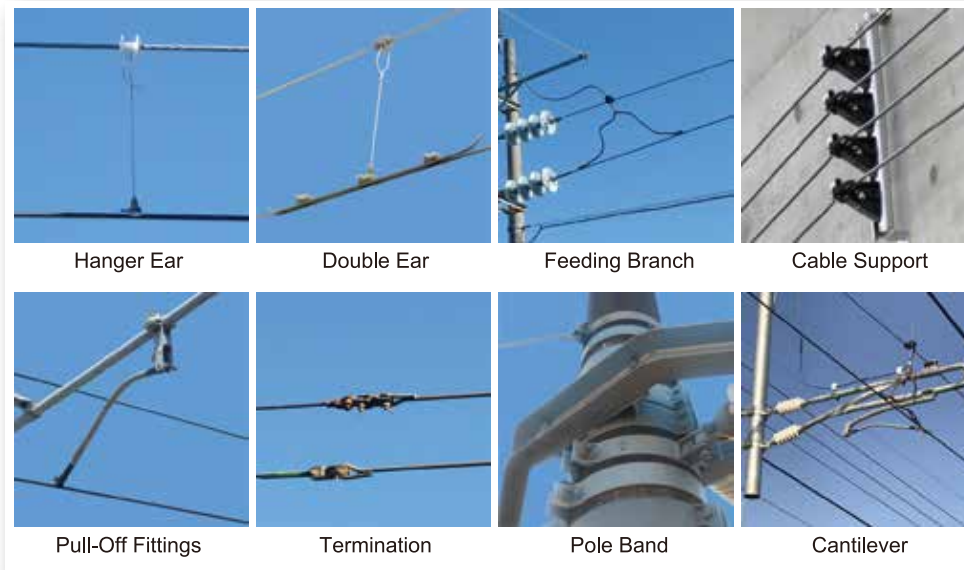
Photos**Company Profile**

“For a Better World and a Happier Life”
- a Pioneer of OCS products in Japan -

Suganuma Co., Ltd. has been engaged in the work of railway transportation and power supply, which are the most important social infrastructures, for more than 130 years since its establishment in 1893, and has contributed to the improvement of people's lives.

“For a Better World and a Happier Life”

That is one of our company philosophies. All of us are working with the utmost sincerity. Thanks to many customers, we are now able to grow into a company that supports railways not only in Japan but also in Indonesia, Taiwan, Vietnam and other countries.

**Products**

Company Profile

Our company JCW(Nihon Sharyou Senjouki) was founded in 1947 as the first manufacturer of washing equipment in ASIA.

We exported Japan's first washing equipment for railway carriages Egyptian National Railways for the engine depots of Abogatasu Buruzu in 1963.

Japan's first washing equipment for railway carriages of Shinkansen bullet trains is supplied to Shinagawa Engine Depot of Japan Railways in 1964.

In recent years, we have delivered Mass Rapid Transit Jakarta/Manila Light Rail Transit System Line 1/Hong Kong International Airport and many others worldwide.

PR

Latest and greatest

- Train body cleaning equipment (ATWP)
- Bogie washing plant/Bearing washing plant
- Parts washiing plant
- Wastewater recycling plant
- ROwater generation plant
- New type of washing brush

We will exhibit regarding.

Photos



Company Profile

TOHO is a manufacturer of plastic products for rolling stock, mainly windows for rolling stock. We will continue to offer solutions that are in step with the times through innovation.

Products

I.G.P

High impact resistant polycarbonate and glass multi-layer windows. Also available in configurations compliant with EN45545-2 HL3.

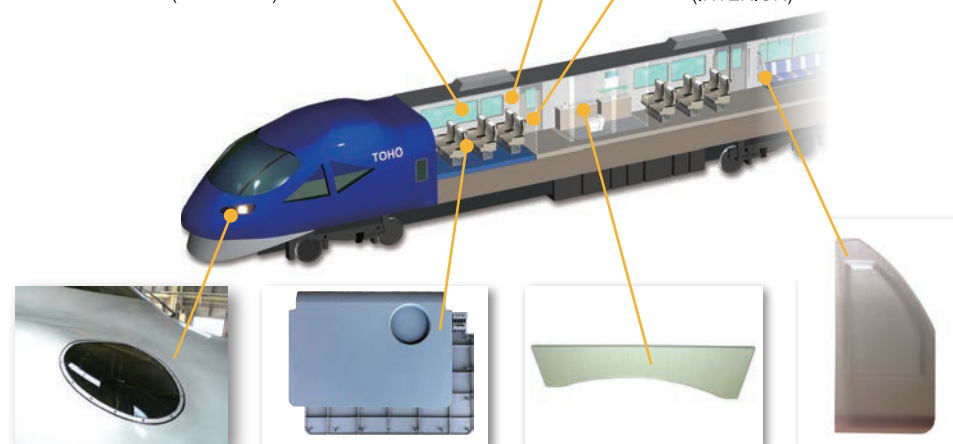
Decola Aluminium SUMITOMO BAKELITE

Vehicle interior materials in a variety of designs. Lightweight, easy to maintain, and friendly to people and the environment.



(WINDOWS)

(INTERIOR)



TOHO's interior products contribute to the comfortableness and safety to railway vehicles.



InnoTrans 2024
JORSA Member





Company Profile

J-TREC was founded in 2012 as a part of JR East group, succeeding the business of Tokyu Car Corporation, the forerunner of stainless steel railcar manufactures. With the capability of manufacturing sophisticated stainless steel train, we offer "sustina" platform as a new type of EMU across the world, as well as hybrid trains, Shinkansen trains, and luxury trains.

PR

At InnoTrans2024, we will focus on our strengths as the JR East Group, not only our track record of overseas shipments. For example, the "sustina" series of trains' compatibility with CBM (Condition Based Maintenance) and the development of hybrid trains. We will keep contributing to the railway system in the world while we strive for technology development and provide the total engineering for railway industry including maintenance in cooperation with JR East group.



Hall 4.2

Booth No.
430

HITACHI
Inspire the Next

Hitachi, Ltd.

Company Profile

Hitachi Rail is connecting the future of mobility - helping every passenger, customer and community enjoy the benefits of more seamless, sustainable transport.

With innovative technology and world-leading delivery capabilities, Hitachi Rail is a trusted partner to customers and consortia partners globally. The company is an expert in every part of the railway: from train manufacturing and maintenance to digital signalling and smart mobility. Its pioneering products, such as the iconic high speed bullet train, enable billions of passenger journeys and the transport of millions of tonnes of freight, every year.



Drawing on the powerful expertise of the wider Hitachi group companies, Hitachi Rail is uniquely placed to further enhance its offer to customers through pioneering new digital solutions and services.

Hitachi Rail's business is local, but its reach is global. With deep roots in its communities, the company is committed to delivering sustainable progress for all.

Find out about more by visiting [hitachirail.com](https://www.hitachirail.com) or the Hitachi Rail stand at **InnoTrans 2024 – Hall 4.2, Stand 430.**



Company Profile

Name in Full : Mitsubishi Electric Corporation
 Establishment : January 15, 1921
 Capital : JPY 175,820 million
 (Consolidated, as of March 31, 2023)
 Employees : 149,655
 (Consolidated, as of March 31, 2023)

Head Office : Tokyo Building, 2-7-3, Marunouchi,
 Chiyoda-ku, Tokyo 100-8310, Japan
 Telephone : 03-3218-2111
 Website : <http://www.mitsubishielectric.com/bu/transportation/>

Providing Services

Advanced, next-generation safety, stability, comfort and energy conservation.
 Introducing Mitsubishi Electric's unique rail solutions.



Mitsubishi Electric is committed to contribute to society and daily life around the world, as a leader in the manufacture and sales of electric and electronic products and systems used in a broad range of applications. Since its foundation in 1921, Mitsubishi Electric has been an equipment supplier for railway systems to realize powering, braking, controlling and comfort functions by a single company, as well as a system integrator providing total support for transportation systems with extensive knowledge gained through past projects.

Mitsubishi Electric has supplied its railway equipment for 59,000 cars in 36 countries (as for March 31, 2023) and will continue to deliver tomorrow's world of mobility with cutting-edge transportation solutions.



Company Profile

Fuji Electric Co., Ltd.

- Established : August 29, 1923
- Head Office : Tokyo, Japan
- Railway business Products
Door Operator • Auxiliary Power Supply (APS) • Propulsion Inverter
Substation facilities • Power semiconductor etc.

PR

Fuji will demonstrate our High reliability door system.
Our latest door, which is equipped with CBM function, realizes low-maintenance and reduces maintenance points to be serviced.
In particular, we welcome railway vehicle manufacturers and railway operators.



Visit Our Web Site



Quality JAPAN



JORSA JAPAN OVERSEAS RAILWAY SYSTEM ASSOCIATION

3rd floor Tekko Bldg. 1-8-2 Marunouchi, Chiyoda-ku, Tokyo 100-0005 JAPAN

TEL: +81-3-3201-3146

FAX: +81-3-3201-3143

<http://www.jorsa.or.jp/en/> E-Mail: infoweb@jorsa.or.jp

Copyright © JUL. 2024 JORSA All rights reserved.
Printed in Japan 1000 BI