

Biotechnology in Ibaraki

JETRO Ibaraki

You can easily access the greatest bio resources in the world

- [RIKEN Bio Resource center](#) 

Type	Number	Remark
Mice	7,818 strains	The 2 nd largest holding in the world
Plants	833,285 items	One of the three major centers in the world
Cell line	10,855 lines	The world largest collection
Genetic materials	3,808,264 clones	One of the three major centers in the world
Microbes (JCM)	25,175 strains	The 2 nd in the number of registration

- [Tsukuba Human Tissue Diagnostic Center](#)



- You can get the biological sample divided from human with clinical information.
- They provide you sample on demand.
- [Research Center for Medicinal Plant Resources](#) (National Institute of Biomedical Innovation)
- [Tsukuba Primate Research Center](#) (National Institute of Biomedical Innovation)
- [The National Institute of Agrobiological Sciences](#) (NIAS)

We support and accelerate your R&D with cluster of Life science

1. Tsukuba International Strategic zone

- 9 ongoing projects
(Life innovation and Green innovation)
- You can get **quintuple research funds** from the government if your project will be adopted.

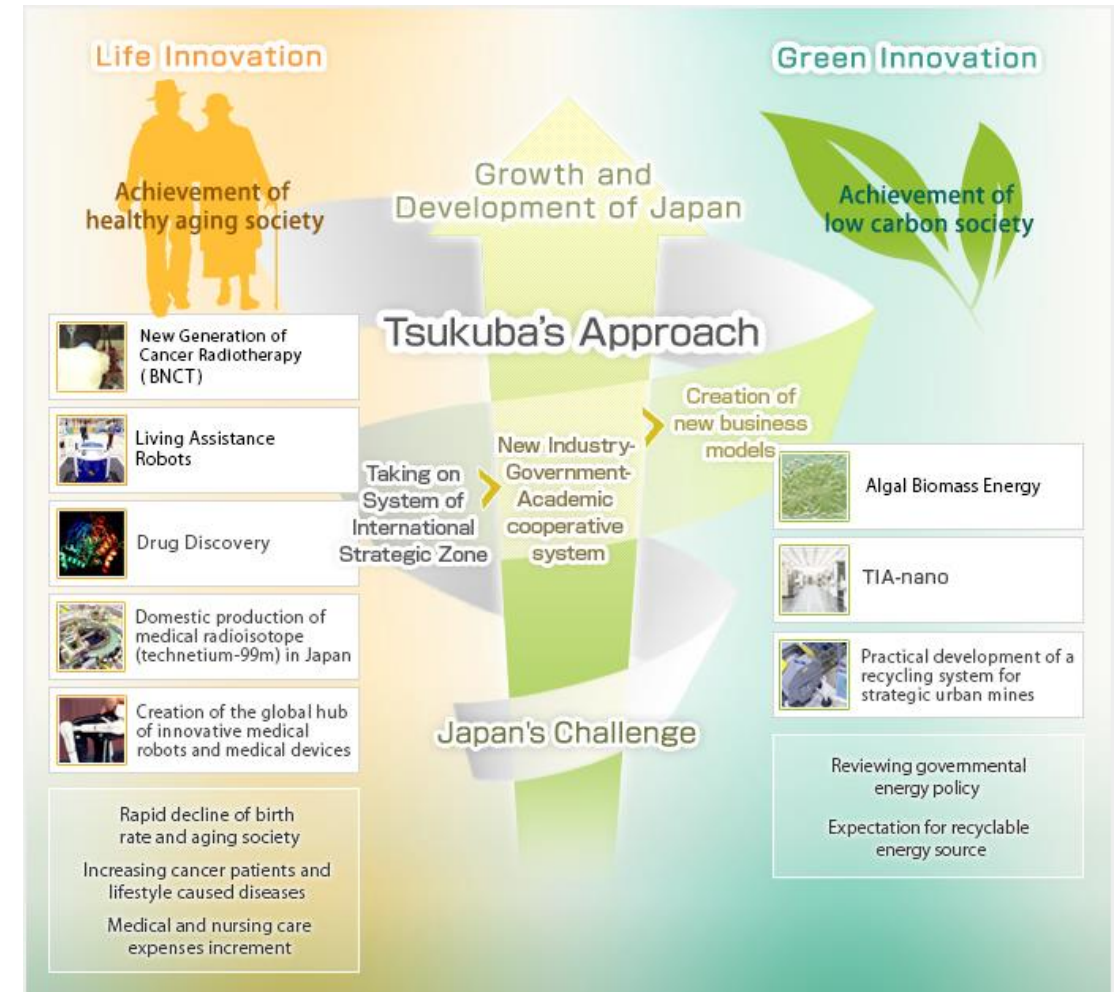
2. TIA (Tsukuba Innovation Arena)

- Open innovation platform



3. TGI (Tsukuba Global Innovation promotion agency)

- Tsukuba innovation ecosystem



We support and accelerate your R&D with cluster of Life science

TLSK (Tsukuba Life Science Promotion Council)

- Development of innovative pharmaceuticals and medical technologies consortium
 - Precision Medicine Center:
Next Generation Sequencer to whole-genome analysis
- Enhancement the program of MEXT
 - Forming Local innovation ecosystem
- TTC (Tsukuba Technical Concierge)
 - Support your business by TTC coordinator

No.1 high speed!!



PIC: Hirotugu Ueda, Ph.D.
(former work place :
Astellas pharma Inc.)

Fellows are:



You can use the highly expensive materials at a low cost

- About 300 R&D institutions include **1/3 of national research institutions** are in Tsukuba.
- They have many state-of-the-art facilities that are accessible.
- You can research on the site of “Database of Open Research Facilities in Tsukuba”.

【as an example】

Facility: Real working environment physical characterization TEM (JEM-ARM200F-G)



Common use (yen/hour)	
SME	Large companies
4,000	6,000

Technical Support (yen/hour)	
SME	Large companies
5,500	8,250



Over 20,000 researchers are in Tsukuba - 1/10 of citizens are researchers

Tsukuba's Excellent Human Resources

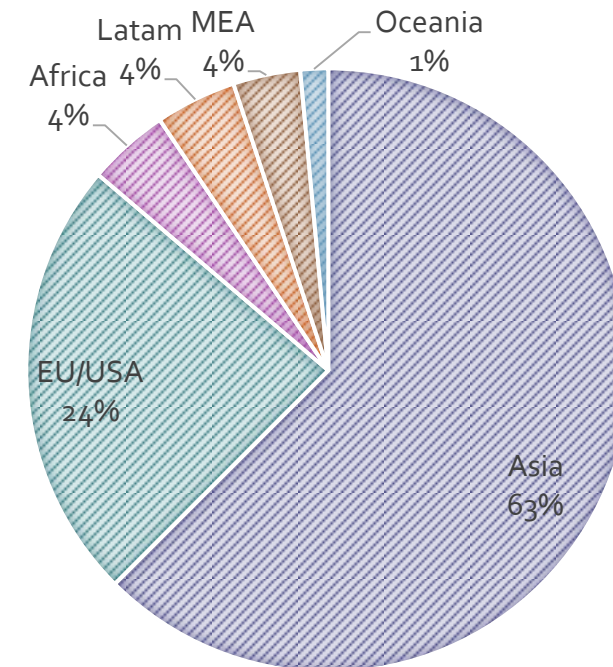
Item	Number
Population of Tsukuba city	227,000
Population of Tsukuba science city	77,000
Average age in Tsukuba city	40.3 (in Japan : 45.8)
- Number of researchers	20,758
- Number of people with a doctorate	7,589
- Number of foreign researchers	7,277



16,778 students
- including **2,426** international students.



8,110 students
- including 295 international students.



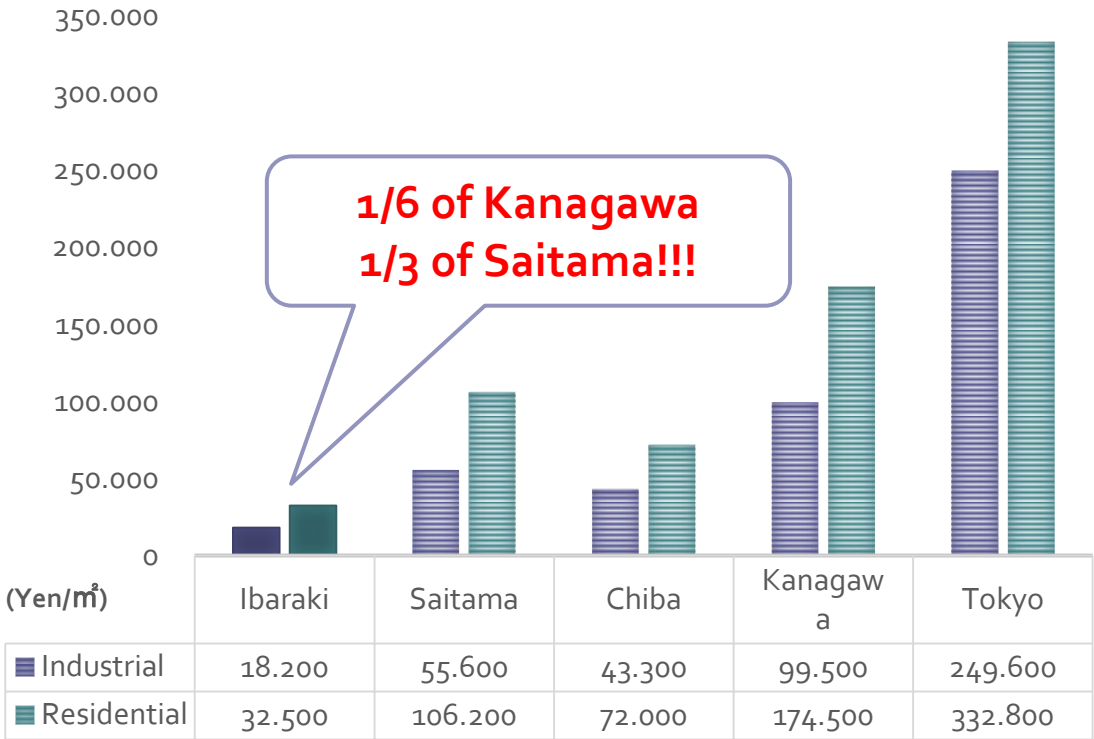
Proportion of nationality

Affordable land cost and good logistics

<Time durations>

From	Destination	Duration
Tsukuba	Tokyo (Akihabara)	45 minutes by train
Tsukuba	Narita Airport	55 minutes by express bus

<Average price of land>



Contact us

JETRO Düsseldorf

Ms. Ayaka Kimura

E-mail : Ayaka_Kimura@jetro.go.jp

Phone : 0211-136020

FAX : 0211-326411