



GREATER NAGOYA
INITIATIVE



City of NAGOYA

—the Best Choice for your Business —



Yusuke OZAWA

Official, Industry Exchange Section, Industry & Labor Division,
Industry Department, Civic & Economic Affairs Bureau, City of NAGOYA

Brief Outline of NAGOYA



Nagoya Castle



TOYOTA "MIRAI" (fuel cell vehicle)



Tokugawaen



ODA Nobunaga



TOYOTOMI Hideyoshi



TOKUGAWA Ieyasu

Ideal Location for your Business



When the Linear
Chuo Shinkansen
(maglev train) opens,
Approx. 30 min. !

When the Linear
Chuo Shinkansen
(maglev train) opens,
Approx. 40 min. !

Nagoya

● Prefectural Nagoya Airport

to Osaka by
Shinkansen
**Approx.
50 min.**

Port of
Nagoya

Approx.
30 min

Central Japan
International Airport
(Centrair)

to Tokyo by
Shinkansen
**Approx.
100 min.**



Osaka★

Nagoya

★ Tokyo



Major Industries in Aichi Pref.



TOYOTA



Port of Nagoya



Toyota Commemorative
Museum of Industry
and Technology

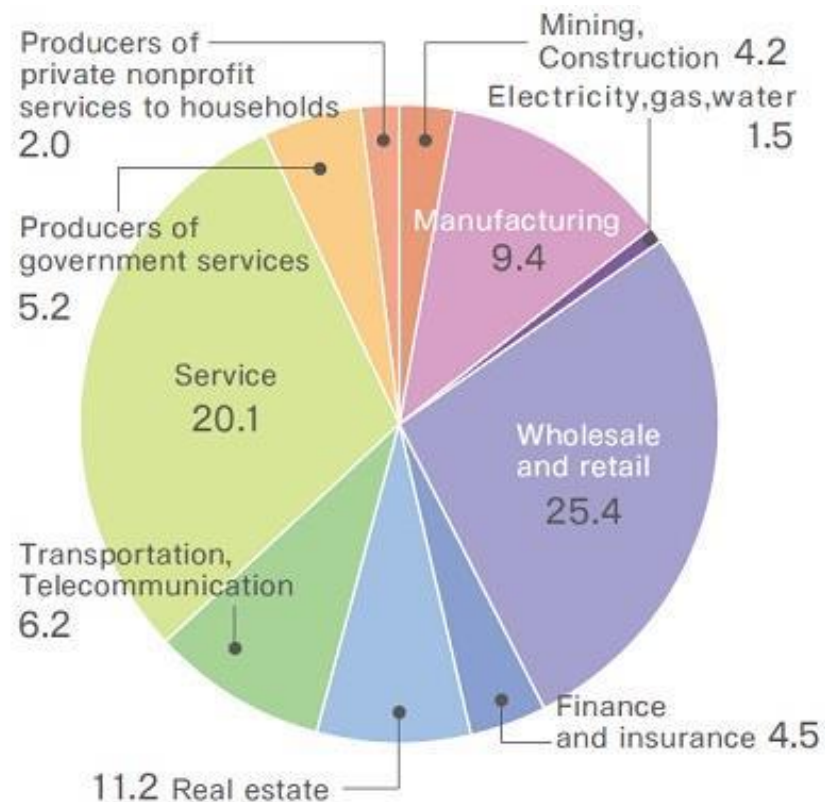


Mitsubishi Regional Jet ©Mitsubishi Aircraft Corporation

The City of Core Function in Aichi Pref.



As the city of core function in Aichi Prefecture, its industrial structure centers on commercial and service industries which are unique characteristics of large cities.



Composition ratio of total production volume
by industry in Nagoya

*Source: The Industries of Nagoya (2014)



Nagoya Station

Events: MESSE NAGOYA



- One of the Largest Cross-Industrial Trade Fairs in Japan
- Aimed at Favorable Business Results

Dates: Nov. 8th (Wed.) - 11th (Sat.), 2017

Venue: Nagoya International Exhibition Hall (Portmesse Nagoya)

Official Website:

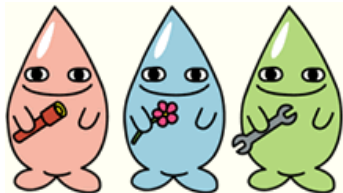
<http://www.messenagoya.jp/english/>

2016 Exhibition Highlights:

Exhibitors: 1,409*

Visitors: 64,792

*including 83 foreign governments, organizations and companies from 20 international countries or area



Messe-Kun
(official characters)



Comfortable City to Live



Nagoya's Advantages compared with other 2 major cities in Japan, Tokyo and Osaka, are;

- Park area per person is larger.
- Commuting time is shorter.
- Housing rent is lower.



Sakae District,
one of the major downtown districts in Nagoya



Hisaya-Odori Gardens Flarie



Subway in City of Nagoya

Subsidies for the Promotion of Industrial Siting within the City of Nagoya (Rental and Owned)



The City of Nagoya provides subsidies for a portion of expenses to businesses that acquire or lease land or buildings to open or expand offices, factories, or research facilities within Nagoya, in one of the priority industrial fields designated by City of Nagoya.
(*In principle, eligible recipients are businesses that have been operating for 3 years or more.)

Subsidy Categories

- 1) Subsidies for the Promotion of Industrial Siting (Rental type)
- 2) Subsidies for the Promotion of Industrial Siting (Ownership type)

Priority Industrial Fields

- 1) Industries solving problems concerning the environment and energy
- 2) Medical, welfare, and health industry
- 3) Creative industries
- 4) Cutting-edge industries
- 5) Support Industries

*Please check the official website of City of Nagoya for more information.

<http://www.city.nagoya.jp/en/page/0000013903.html>



Event: RoboCup 2017 Nagoya Japan



RoboCup Rescue



Soccer Competition



Venue: Nagoya International
Exhibition Hall
(Port Messe Nagoya)



Merci pour votre attention