

STATION Ai Business Introduction

STATION Ai Corporation



STATION Ai

SoftBank



Japan's Largest Incubation Hub

- Scheduled to open: October 2024
- Project period: 10years
- Total floor area: 23,098m²
- Location: Tsurumai, Nagoya-City
*15min by car from Nagoya station

2.2 Structure of STATION Ai

Collaborating with partner companies*
we aim to realize one of the largest incubation facilities in Japan

SoftBank

100% Subsidiary

STATION Ai

Start-up support



STATION Ai

SB Innoventure

Fund management



STATION Ai

DEEP(ORE

Profit-Making Business
Operations
Restaurants • hotels • childcare
facilities, etc.



STATION Ai

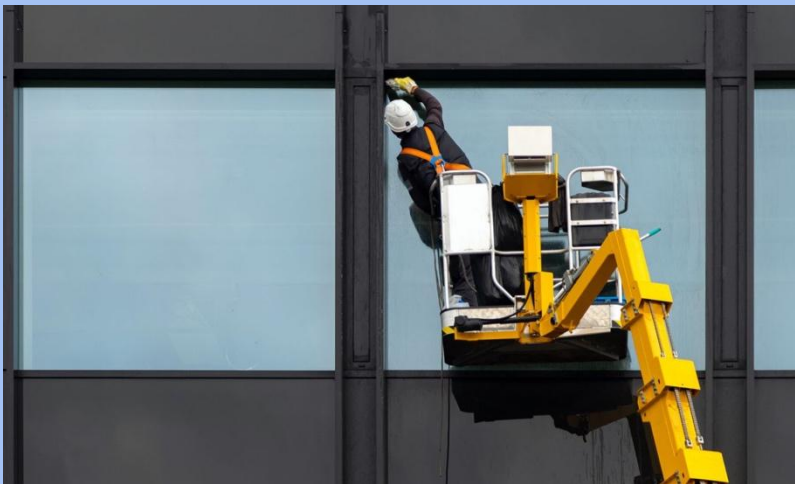
tot mate SQUEEZE

Design &
Construction



FUJITA
ISHIMOTO

Building Maintenance
Management



アサヒファシリティズ
Asahi Facilities

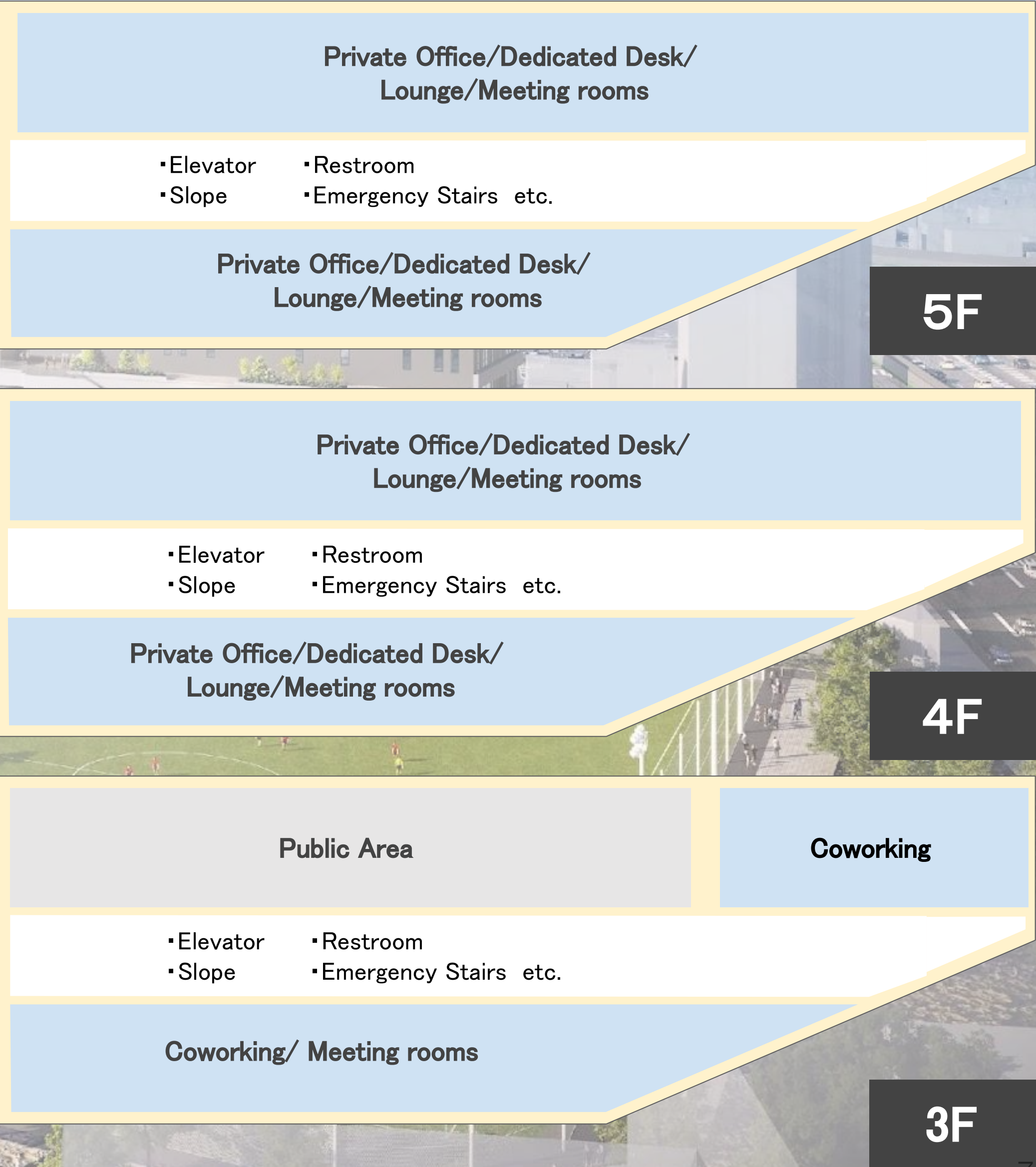
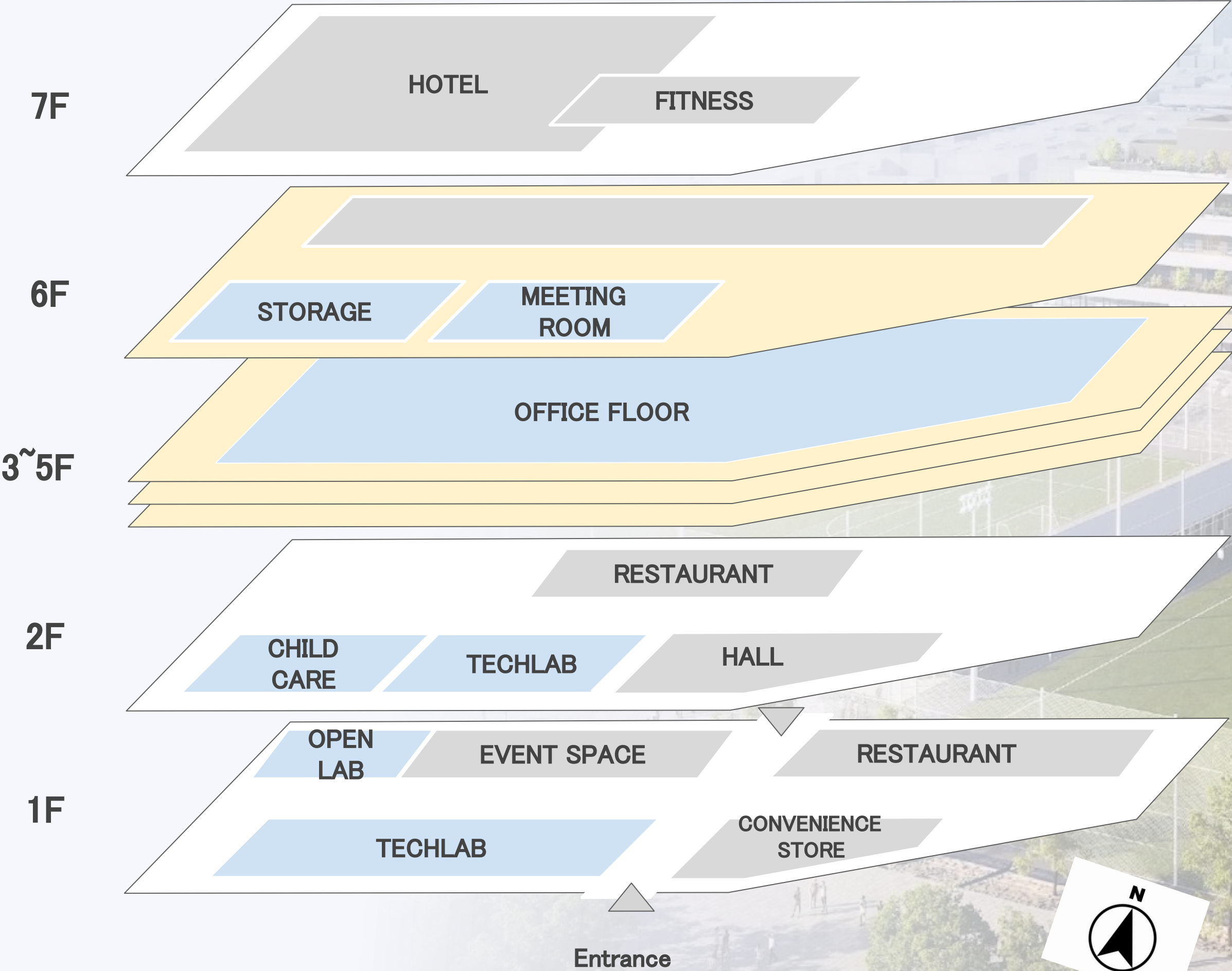






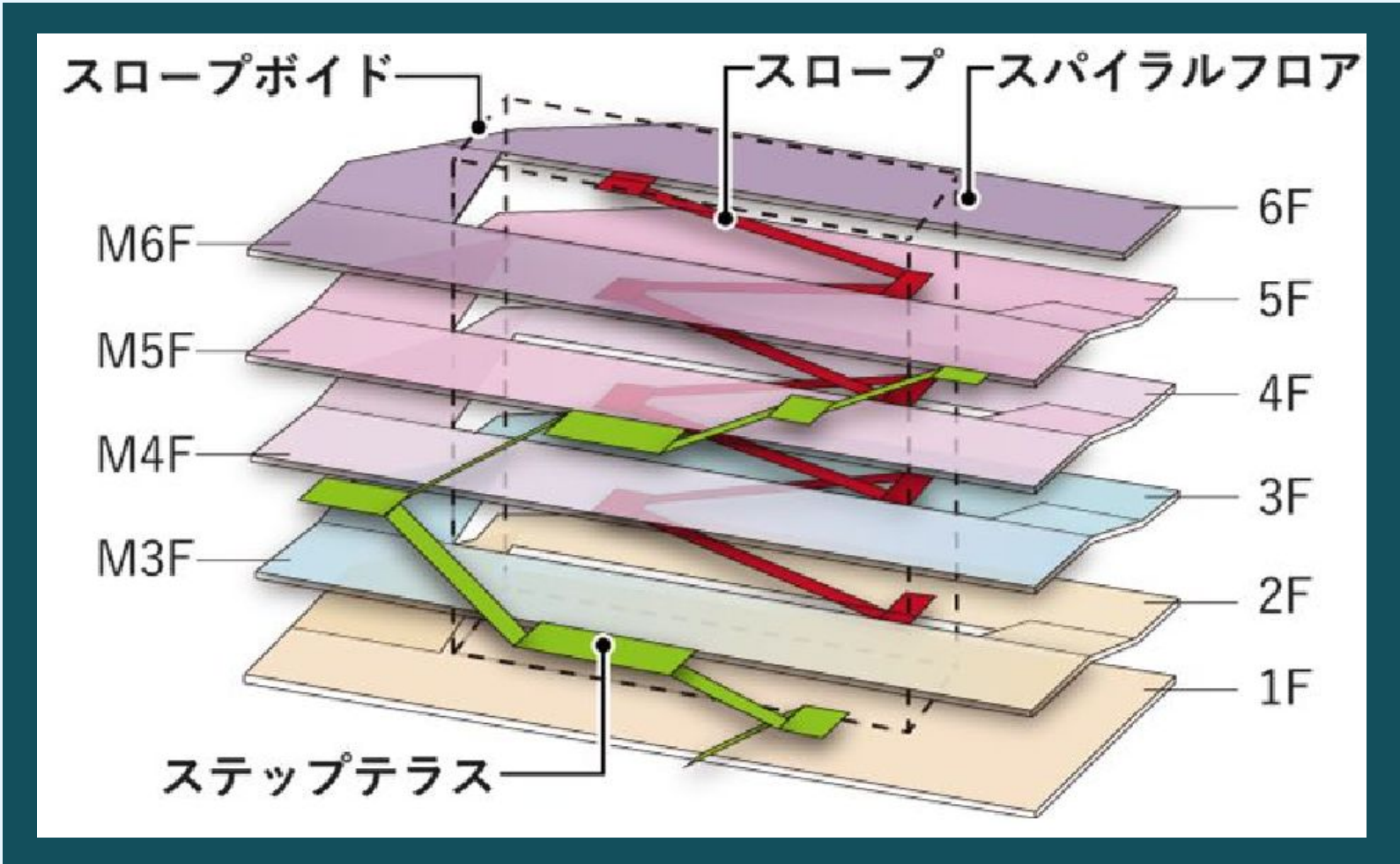
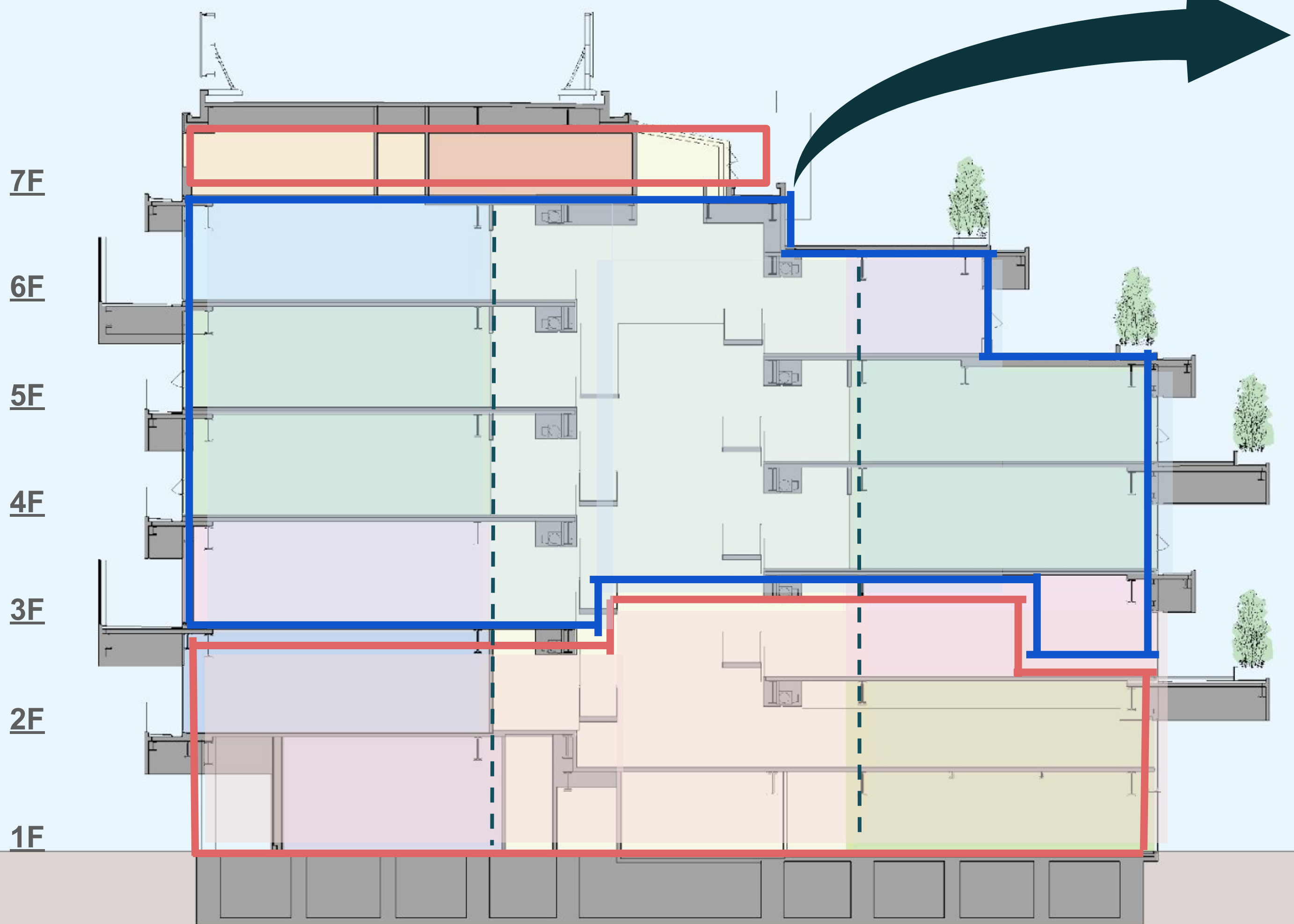
Entrance/Food Zone

Floor Map



Facility Details

A slope connecting floors to increase communication in the facility



M6F

Member Zone

Startup & Partner Companies

M5F

M4F

Public Zone

Local residents, students
can enter this zone

M3F

M2F

1F



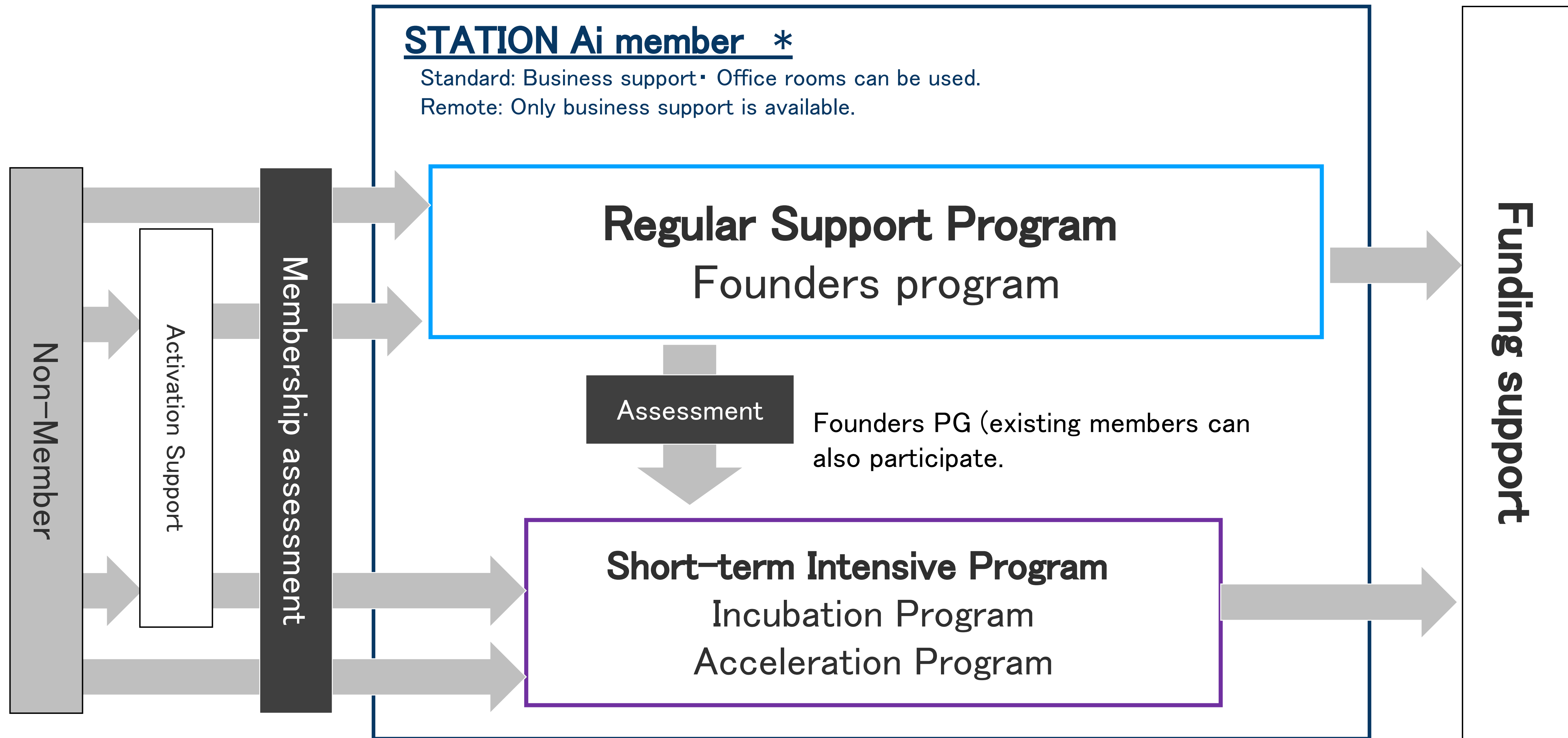
Member zone/Co-Working space

3.1 Launch Ceremony of STATION Ai Founders Program

As of 7th April 2022, STATION Ai officially launched the startup supporting program (=Founders Program) at Nagoya Global Gate as PRE-STATION Ai



Positioning of the support program



* All STAi members participate in Founders PG.

Detail of Founders Program

Business growth know-how, individual support, and promotion of community building
Providing a variety of growth opportunities over the course of a year



MENTORING



GUILD*



WORKSHOP
Event



DEMO DAY



SUPPORTING
MENU



* Mutual support system through horizontal connections among entrepreneurs

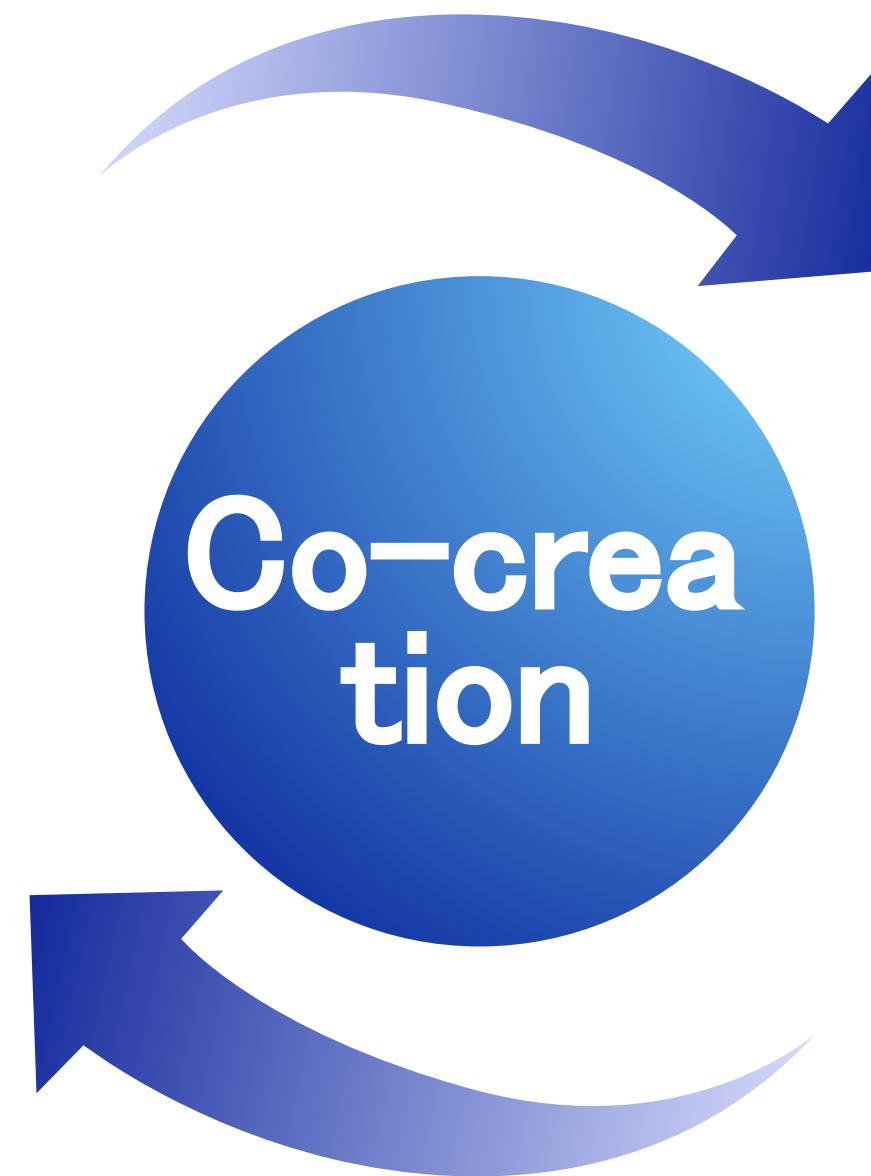
Open Innovation

Aim to create new business and active industry between Start-ups and Domestic companies in Japan

Domestic and international start-ups



- Risk-free business development with prize money
- Building the foundation for business realization



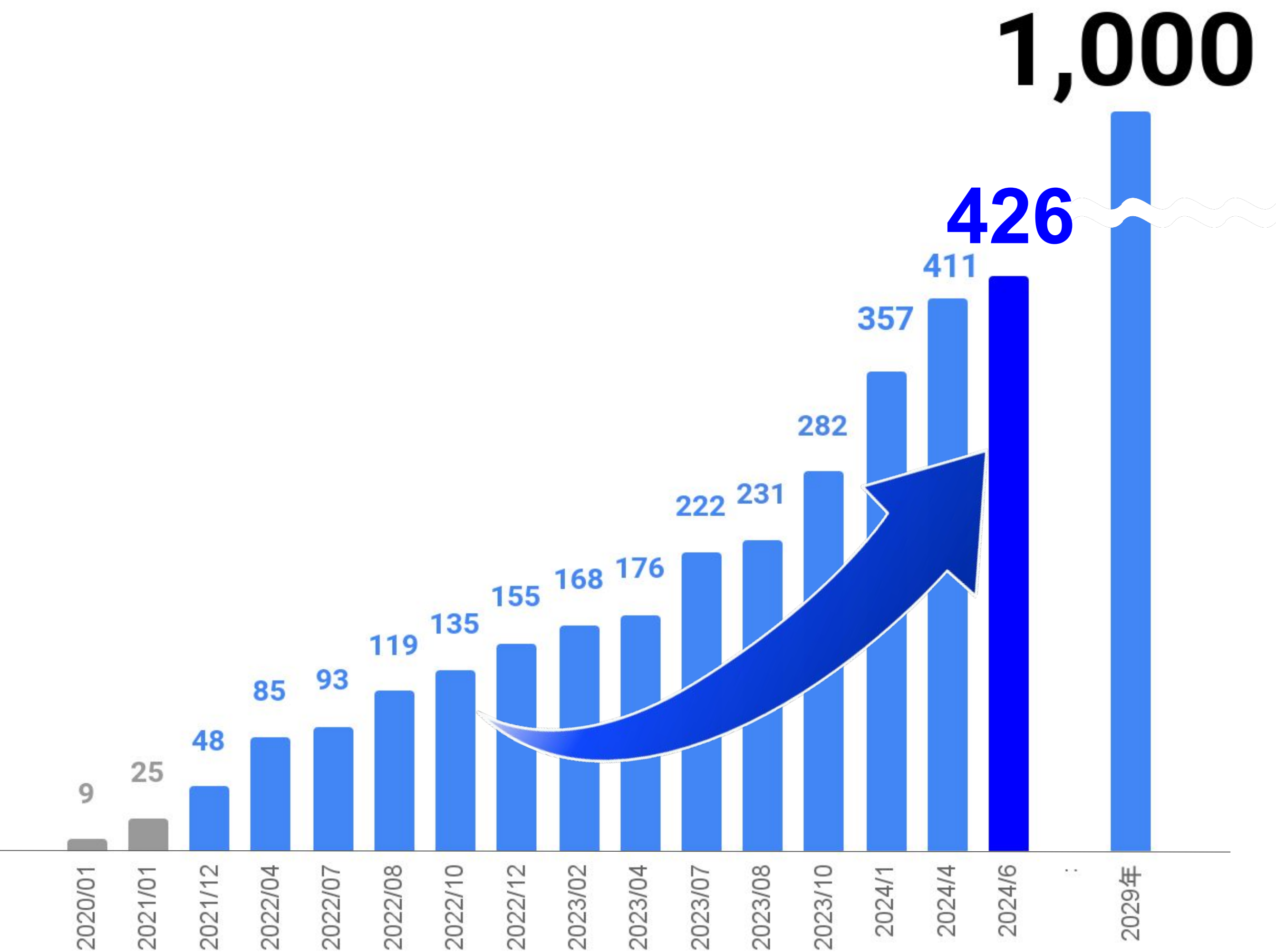
Domestic companies



- Incorporate new business models
- Foster a culture of business development speed and growth

STATION Ai

Number of PRE-STATION Ai members



Target in FY2029

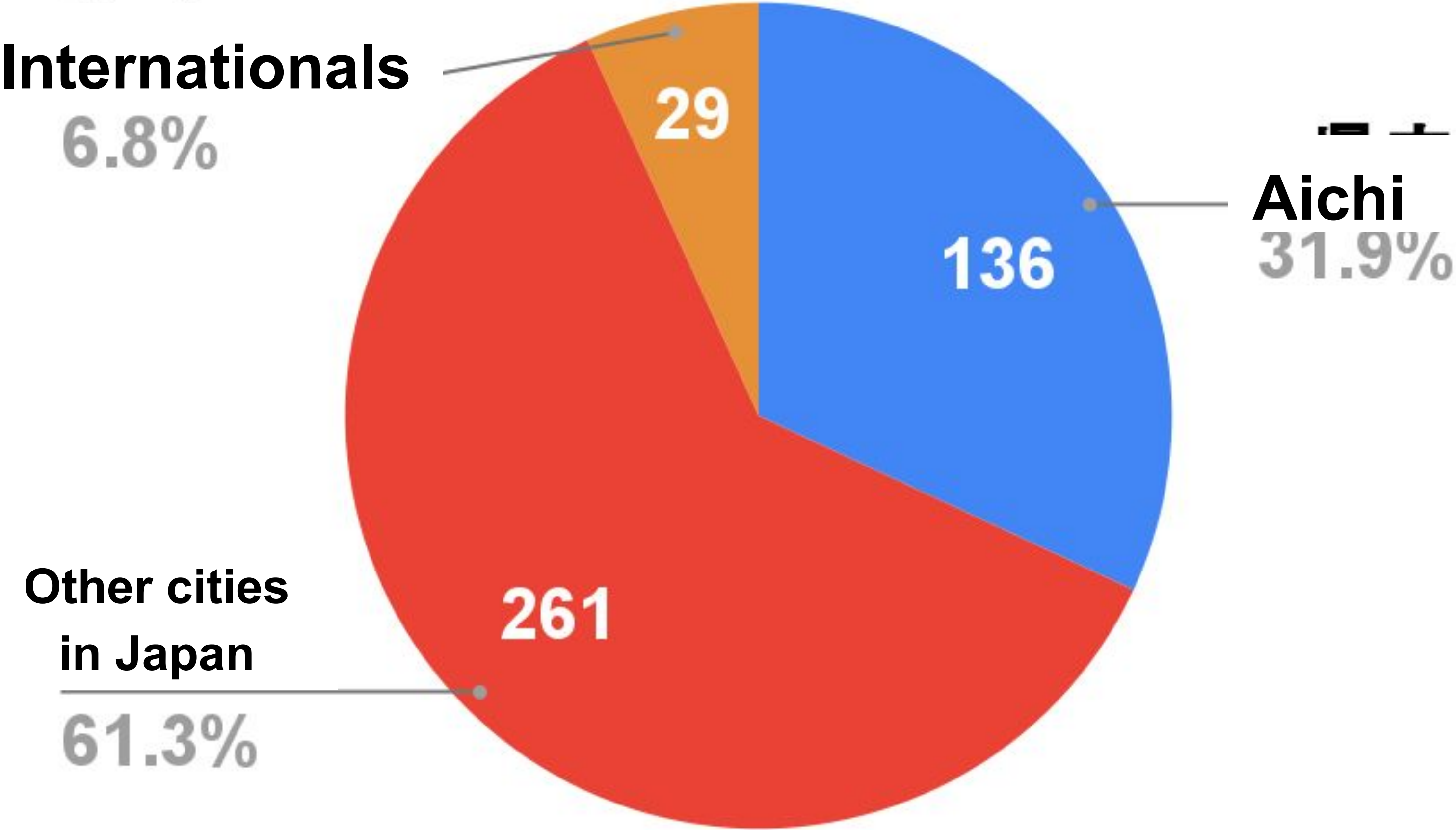
1,000 members

[illegible]

Headquater

n = 426

県内	136
県外	261
海外	29



Member requirement

- ✓ Already established a head office function in Aichi Prefecture, intend to do so within a year, or those who intend to develop or expand their business in Aichi.
- ✓ Those who have already obtained or intend to obtain a legal entity status.
- ✓ In principle, those who have been in business for less than 5 years.
- ✓ Those who are aiming to develop new markets and achieve high growth by utilizing new technologies and business models such as AI, IoT, CN etc.

STATION Ai

**Home to people from Japan and abroad
who aspire to start their own businesses**



APPENDIX

Global Introduction



Global Pitch Day



STATION Ai-related Link

Linktree

