

# Well Established Transportation

Niigata is a transport node connecting Kanto, Kansai and Tohoku regions. The well-established transport infrastructure makes access from any region smooth and convenient.

## Expressway [Access to Niigata Nishi Interchange]

From Tokyo (Nerima Interchange)	Kanto / Hokuriku Expressway	4h (300km)
From Sendai (Sendai Miyagi Interchange)	Tohoku / Joban Expressway	3h 10m (260km)
From Nagoya (Nagoya Interchange)	Chuo / Joshinetsu Expressway etc.	5h 30m (460km)
From Osaka (Suita Interchange)	Meishin / Hokuriku Expressway	7h (580km)

※Approximate time required

## Trains [Access to Niigata Station]

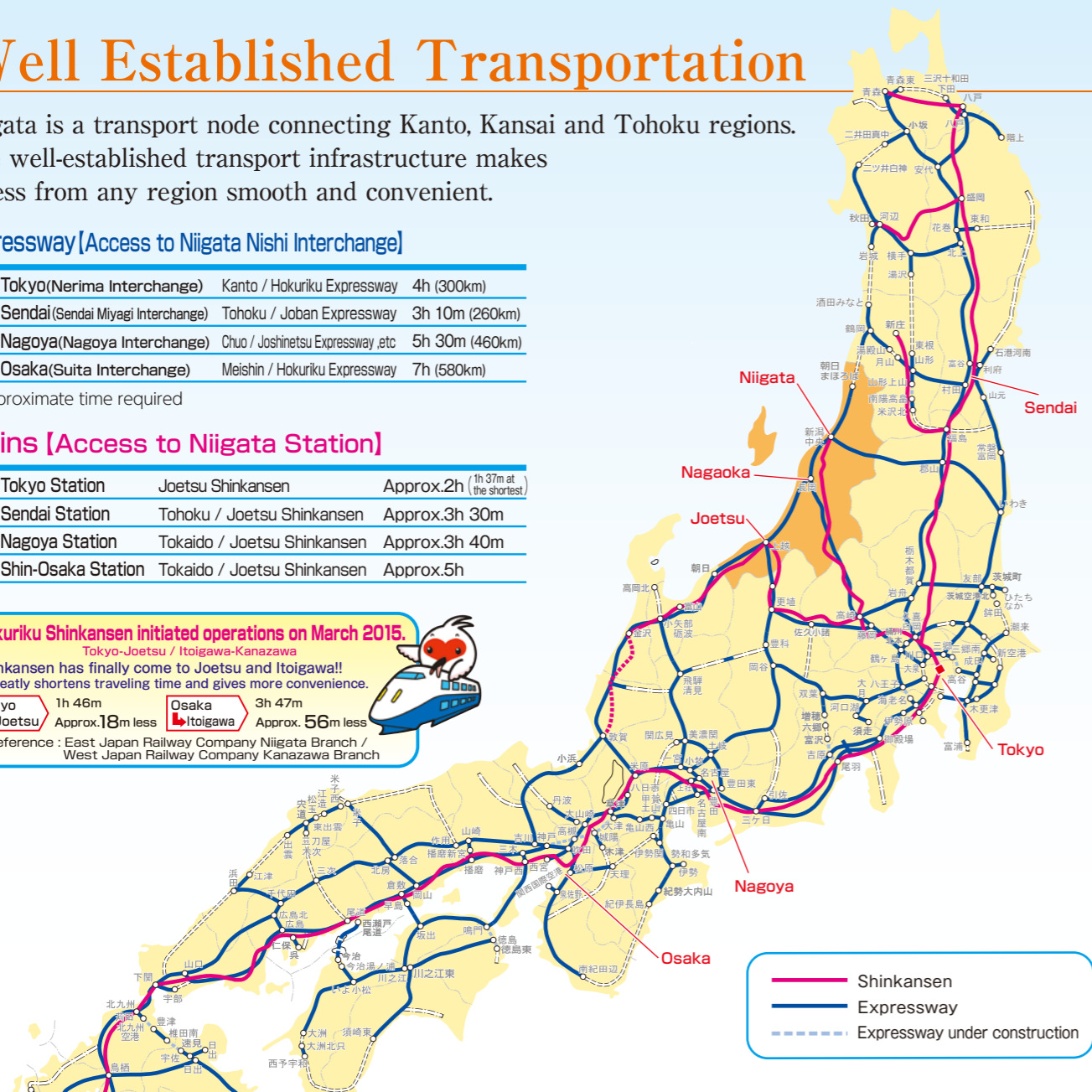
From Tokyo Station	Joetsu Shinkansen	Approx.2h (1h 37m at the shortest)
From Sendai Station	Tohoku / Joetsu Shinkansen	Approx.3h 30m
From Nagoya Station	Tokaido / Joetsu Shinkansen	Approx.3h 40m
From Shin-Osaka Station	Tokaido / Joetsu Shinkansen	Approx.5h

## Hokuriku Shinkansen initiated operations on March 2015.

Tokyo-Joetsu / Itoigawa-Kanazawa  
Shinkansen has finally come to Joetsu and Itoigawa!!  
It greatly shortens traveling time and gives more convenience.

Tokyo	1h 46m	Osaka	3h 47m
Joetsu	Approx.18m less	Itoigawa	Approx. 56m less

Reference : East Japan Railway Company Niigata Branch / West Japan Railway Company Kanazawa Branch



## Chemical plants make the best use of affluent water resources. Snowfalls never do harm to operations.



Kuraray Co., Ltd. Niigata Plant  
2-28, Kurashiki-cho, Tainai, Niigata

### Kuraray Co., Ltd. Niigata Plant

Tainai is a city in the north of Niigata. Along the shore of Tainai River, which runs through the center of the city, Kuraray Niigata Plant is located. In 1959, we initiated operations as the first-ever natural gas complex in Japan. Since then, we have produced methacrylate resin, PVA, perfume, API and so on; as the center of Kuraray's chemical business, we have operated the plant here for a half century.

Although most of our facilities, such as distillation columns, are located outside, cold waves and snowfalls rarely caused problems with our operations. Besides, we also own massive non-utility generation facilities. We have exploited pure, abundant groundwater which runs down from the Iide Mountains and Okutainai; it enables us to run the plant all year around.

## We welcome any inquiries about establishing new business facilities.

(Contact)

Industrial Establishment Division,  
Niigata Prefectural Government

11F Niigata Prefectural Office,  
4-1 Shinko-cho, Chuo ward,  
Niigata, 950-8570  
Tel : +81-(0)25-280-5247  
FAX : +81-(0)25-280-5508  
E-mail : ngt050080@pref.niigata.lg.jp

Industrial Land Sales Division,  
Niigata Prefectural Government

14F Niigata Prefectural Office,  
4-1 Shinko-cho, Chuo ward,  
Niigata, 950-8570  
Tel : +81-(0)25-280-5578  
FAX : +81-(0)25-280-9357  
E-mail : ngt300050@pref.niigata.lg.jp

Niigata Prefecture Tokyo Office

15F Prefectural Assembly Hall,  
2-6-3 Hirakawa-cho, Chiyoda ward,  
Tokyo, 102-0093  
Tel : +81-(0)3-5212-8997  
FAX : +81-(0)3-5210-9090  
E-mail : ngt001010@pref.niigata.lg.jp

Niigata Prefecture Osaka Office

8F Osaka Ekimae First Building,  
1-3-1-800 Umeda, Kita ward,  
Osaka, 530-0001  
Tel : +81-(0)6-6348-9405  
FAX : +81-(0)6-6348-9407  
E-mail : ngt051110@pref.niigata.lg.jp

# Niigata Industrial Guide

## Summary

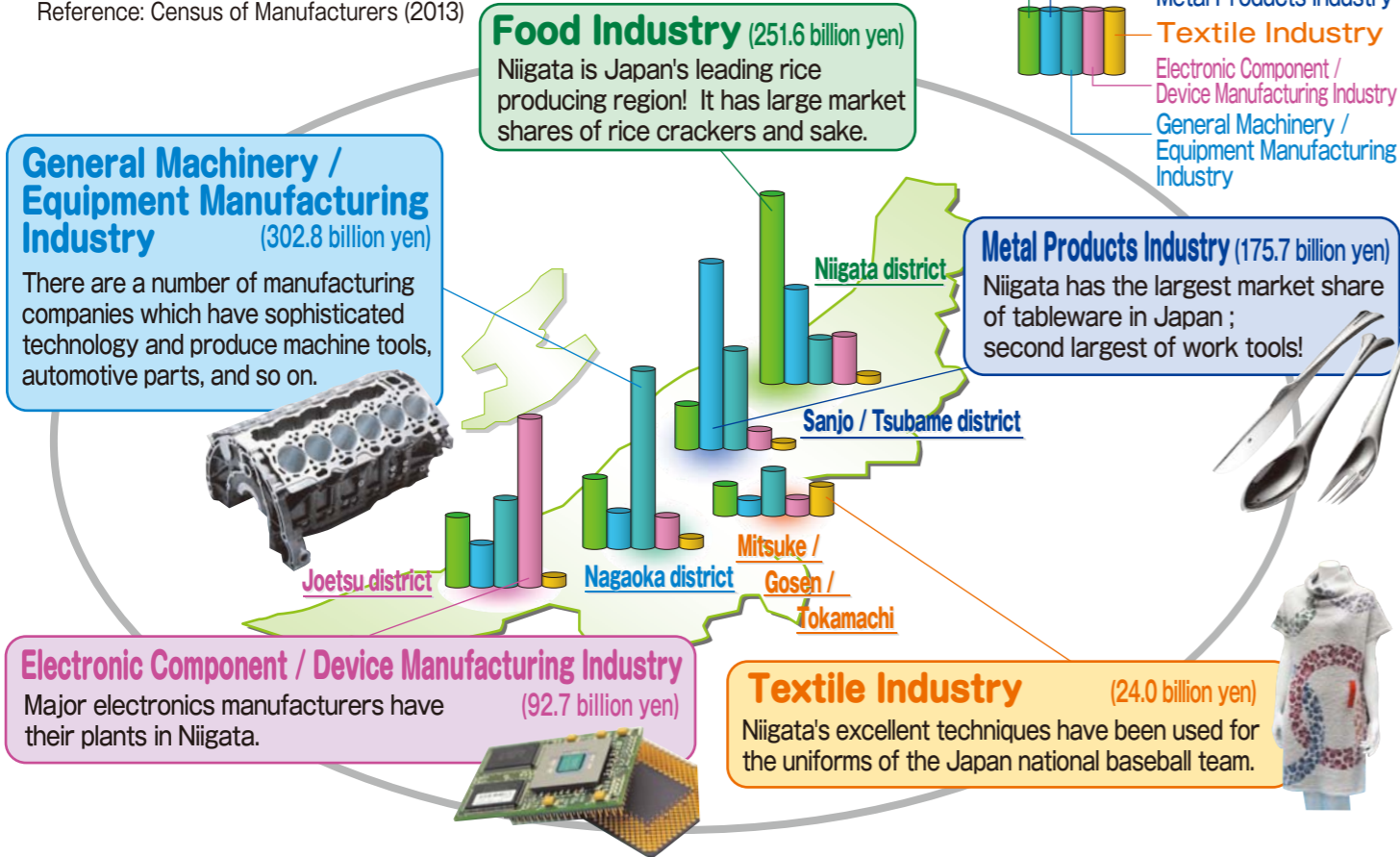


# Sophisticated Technology and Industrial Clusters in Niigata

**We support your business with the highest level of technical abilities in Japan!**

Total shipment value of industrial products in each industrial cluster (2013)

Reference: Census of Manufacturers (2013)



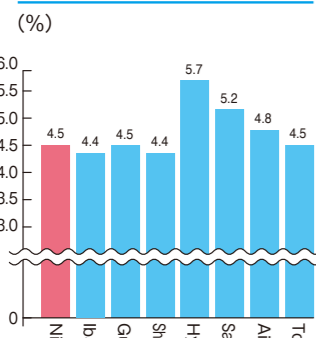
(Population estimates / labor force)

(Number of people)

District	Niigata	Sanjo/Tsubame	Nagaoka	Joetsu	Mitsuke/Gosen/Tokamachi	Other
Population estimates	818,699	178,617	398,152	274,341	147,083	481,996
Labor force	417,552	99,872	213,620	146,774	81,808	263,503

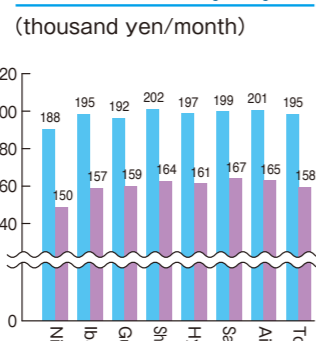
## Labor Force

**Turnover Rate**



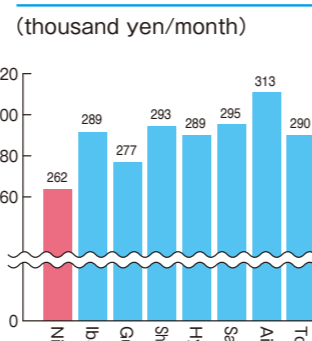
Reference: Statistical Observations of Prefectures 2015 (Ministry of Public Management, Home Affairs, Posts and Telecommunications)

**Starting Salary**



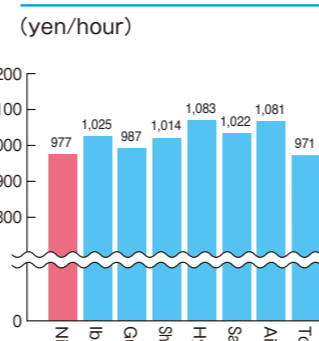
Reference: Basic Survey on Wage Structure 2014 (Ministry of Health, Labour and Welfare)

**Salary (for ordinary workers)**



Reference: Basic Survey on Wage Structure 2014 (Ministry of Health, Labour and Welfare)  
\*\*Salary\* refers to the monthly pay from which overtime pay has been subtracted, and income tax and others not deducted.

**Salary (for part-time workers)**



Reference: Basic Survey on Wage Structure 2014 (Ministry of Health, Labour and Welfare)  
\*\*Salary\* refers to the monthly pay from which overtime pay has been subtracted, and income tax and others not deducted.

The comparison objective prefectures are the top 7 in regard to the number of plant locations. (Excluding electricity industry.) Reference: Survey of Factory Location Trends 2014

# Abundant Natural Resources

**Niigata is blessed with water resources.**

Surrounding Niigata, the Asahi Mountains, the Iide Mountains, and the Echigo Mountains rise in the east side; the Nishikubiki Mountains, the Hakuba Mountains and so forth in the west. Snow on the mountains melts and runs into the rivers, and they eventually flow into the Sea of Japan. In Niigata, there are a number of industrial complexes which can exploit these abundant water resources.

Abundant pure water has been utilized in food industry.

**Oguni Noodle Making Inc.**

HQ: Oguni, Yamagata

Plants located in: Nakajo Industrial Complex (Tainai, Niigata)

Main products: rice flour noodles (udon, pasta, soba, ramen, fried noodles, and so on)

**Reasons for having plants in Niigata**

- Niigata is rich in nature and pure water. Underground water running down from the Iide Mountains and Okutainai, makes the noodles tender and mellow.
- Extensive land to build new plants was available.



**TableMark Co., Ltd.**

HQ: Chuo ward, Tokyo

Plants located in: Unonuma Mizunosato Industrial Complex (Unonuma, Niigata)

Main products: frozen udon, sterile-packaged rice

**Reasons for having plants in Niigata**

- There is abundant pure water suitable for production of udon and rice. (Unonuma is certified as one of the "100 regions living with waters.")
- Unonuma is close to such large cities as Tokyo and convenient for transportation. (It's 200km away from Tokyo, 3 hours drive by the expressway.)

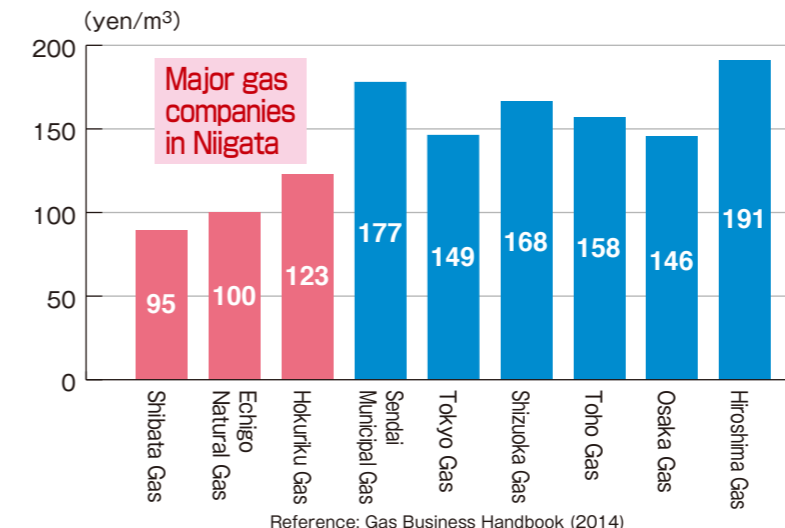


**Niigata is affluent in natural gas!**

Niigata accounts for 70% of the domestic natural gas production.

Town gas is less expensive than other districts!

Average town gas rates authorized by the government



Reference: Gas Business Handbook (2014)



Extension well "Katagai SK-29D/29D-1" (Photo provided by Japan Petroleum Exploration Co., Ltd.)