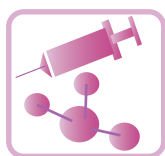


Regional Information: Industrial Cluster Information Life Science



Kobe city
The city is seeking to create a medical-industrial complex at the second phase of the Port Island project.

⑨Fukui
There is a cluster of healthcare-related industries such as Eisai.

⑧Toyama
There is a cluster of healthcare-related industries such as Eisai.

⑦Gifu
There is a cluster of healthcare-related industries such as Eisai.

⑩Shiga
A project that develops medical/healthcare devices, and creates local businesses of health support services utilizing the devices.

Sapporo city
Cool climate and abundant resources

Fukushima city
"Advanced Clinical Research Center" in Fukushima Medical University enables collaborative research using the latest clinical/small animals imaging devices.

⑮Hyogo
Healthcare and pharmaceutical-related companies and R&D centers are located at Kobe Medical Industrial City, there are also many new energy-related projects.

⑫Tottori
"Tottori Bio Frontier" is present, which is the base for the industry-academia-government collaborative R&D supporting R&D activities and the commercialization of bio-related industries.

Niigata city
<Niigata City as a capital of Food industries>
•From a cluster of Food industries to "General Base for Food industries"
•Bio Research Park Plan

Sendai city
IT and service companies in the health and welfare field based at Sendai-Finland Wellbeing Center have accumulated.

Sakai city
The city with an advanced medical-related clustering has some of the outstanding facilities and research institutions.

The city has rich agricultural and fishing resources and is home to numerous large-scale food industries.

⑰Niigata
Beverage manufacturers

①Fukushima
It is working on the development of the state of the art technology helped by academy, industry and government collaboration, such as National Institute of Advanced Industrial Science and Technology (AIST)

⑬Hiroshima
Japan's top manufacturing technology has been aggregated, and there have been vigorous efforts to create new industries in advanced medical care and welfare.

Okayama city
The city with an advanced medical-related clustering has some of the outstanding facilities and research institutions.

Osaka city
There is a concentration of pharmaceutical, food and medical equipment companies.

Kyoto city
A diversity of industries, from traditional industries to state-of-the-art technology industries, has converged in the city.

②Gunma
Aggregation of healthcare industries and food industries

③Tochigi
Leading medical device companies and technologically innovative SMEs based in Tochigi have come together to establish the Tochigi Medical Device Industry Promotion Association.

Fukuoka
Japan's top manufacturing technology has been aggregated, and there have been vigorous efforts to create new industries in advanced medical care and welfare.

Saitama city
There has been a growing concentration of life science R&D sites and manufacturer marketing locations in the city.

Saga
Japan Cosmetic Center has been established in Karatsu. The city promotes the accumulation of cosmetic industries.

Establishment of a hub of industry-academia-government collaborations specialized in functional health food development

Kanagawa
Japan's 5th largest clustering of biotech industry ventures.

④Chiba
Companies involved in biotechnology, medical care, welfare, and health services are located at international R&D sites such as Kazusa.

Kumamoto
Life sciences field with top global research level

Kumamoto city
CO-OP FOODS CO., LTD.

Kitanagoya city
It is suitable for the establishment of enterprises such as the aerospace industry, as Komaki-Minami factory of Mitsubishi Heavy Industry, the Mitsubishi Regional Jet's (MRJ) final assembly factory, and the aviation experiment base of JAXA locate in neighboring areas.

Kawasaki city
Develop a base for strengthening an international competitiveness in field of life science, which is a driving force of Japan's economy by using the industrial cluster of the Keihin coastal area.

Ehime
An industrial prefecture that is home to major companies in basic material sectors (pulp, non-ferrous metals, chemicals, high-function fibers)

⑮Shizuoka
With the aim of achieving the best health and longevity in the world, Shizuoka is pushing ahead with world-class R&D from medical care to the wellness industry.

Yokohama city
Establishment of a hub for industries through accumulating companies, universities, and research institutes in Yokohama Science Frontier in Keihin water front area.

⑭Oita
Companies such as Kawasumi Laboratories and Asahi Kasei are located and the prefecture has the largest share in the blood purification product market

Matsuyama city
A base of the Swedish-style welfare industry and a research hub of cell-free protein synthesizing technology, etc.

Shizuoka city
Food, pharmaceutical and chemical companies have agglomerated. Research in the food science business is booming.

Sagamihara city
A succession of major companies excelling in the fuel cell and aerospace sectors have moved into Sagamihara city.

⑮Miyazaki
Companies such as Kawasumi Laboratories and Asahi Kasei are located and the prefecture has the largest share in the blood purification product market

⑪Mie
Mie Prefecture aims to create a cluster of growing industries in environmental energy, life innovation, and advanced materials.

Mie promotes attracting hub factories with both R&D and manufacturing functions, giving instructions and providing support to other factories in the country and overseas.

Support for the establishment of foreign-affiliated (advanced technology) companies' Asian production bases

⑥Nagano
Nagano Prefecture boasts one of Japan's largest clusters of companies engaged in basic manufacturing technology, such as parts with advanced functions and advanced processing.

⑤Yamanashi
A cluster of medical equipment manufacturing and related industries.



As of July 2015