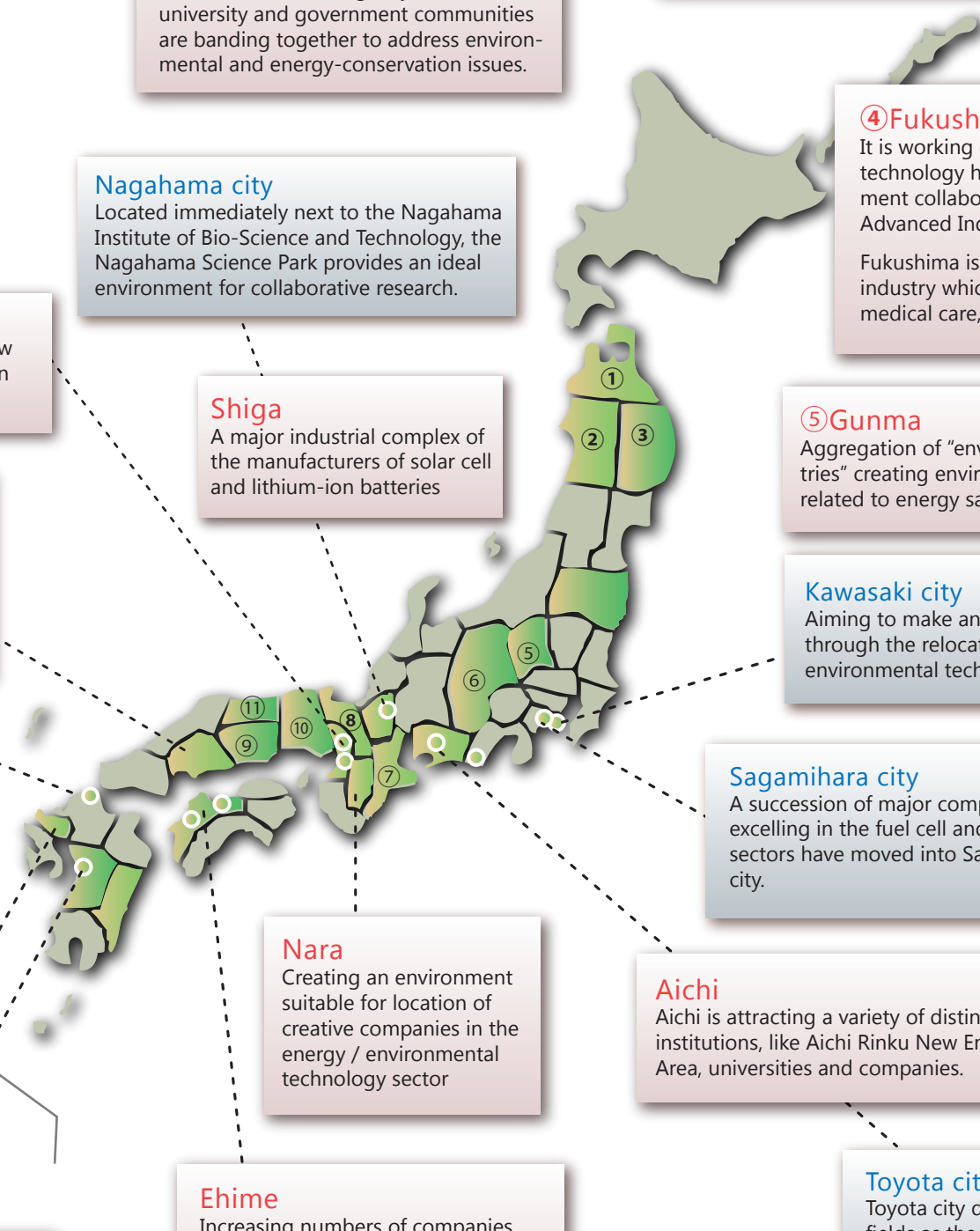


Regional Information:
Industrial Cluster Information
Environment and energy



①Aomori
Aomori offers one of the world's most diversified energy development and supply bases.

②Akita
Advanced smelting technologies are applied to the environment and recycling, to promote industries in harmony with the environment.

③Iwate
A large number of major semiconductor manufacturers and the companies in cooperation with these companies and trade partners are establishing facilities in the prefecture.

④Fukushima
It is working on the development of the state of the art technology helped by academy, industry and government collaboration, such as National Institute of Advanced Industrial Science and Technology(AIST)
Fukushima is working on the concentration of robot industry which has potential in disaster response, medical care, agriculture and physical distribution.

⑤Gunma
Aggregation of "environment and energy related industries" creating environmental technologies and products related to energy saving, new energy and the like.

Kawasaki city
Aiming to make an international contribution through the relocation of advanced and diverse environmental technologies and know-how

Sagamihara city
A succession of major companies excelling in the fuel cell and aerospace sectors have moved into Sagamihara city.

Aichi
Aichi is attracting a variety of distinctive institutions, like Aichi Rinku New Energy Research Area, universities and companies.

Toyota city
Toyota city defines the environment/energy fields as the key industry and provides the preferential system with doubled amount of incentives

⑥Nagano
Nagano Prefecture boasts one of Japan's largest clusters of companies engaged in basic manufacturing technology, such as parts with advanced functions and advanced processing.

⑦Mie
Mie Prefecture aims to create a cluster of growing industries in environmental energy, life innovation, and advanced materials.

⑦Hyogo
Healthcare and pharmaceutical-related companies and R&D centers are located at Kobe Medical Industrial City, there are also many new energy-related projects.

⑧Kyoto
As the birthplace of the Kyoto Protocol to the United Nations Framework Convention on Climate Change, Kyoto's business, university and government communities are banding together to address environmental and energy-conservation issues.

Nagahama city
Located immediately next to the Nagahama Institute of Bio-Science and Technology, the Nagahama Science Park provides an ideal environment for collaborative research.

Shiga
A major industrial complex of the manufacturers of solar cell and lithium-ion batteries

Nara
Creating an environment suitable for location of creative companies in the energy / environmental technology sector

Ehime
Increasing numbers of companies related to new energy, including solar cell plants, etc. are sitting themselves here.

Matsuyama city
The clustering of solar-related companies is advancing, and the city is working on further clustering of environment-related companies.

Saijyo city
Enterprizes relating to new energy such as solar power generation and to effluent treatment locate in the city.

⑫Miyazaki
Increasing numbers of companies related to new energy, including solar cell plants, etc. are sitting themselves here.

⑪Tottori
Boasts western Japan's largest cluster of electronic device and ICT equipment firms.

⑩Okayama
Ultraprecise manufacturing technology utilizing the knowledge accumulated in the fields of automobile manufacture, agricultural machinery manufacture and shipbuilding.

Osaka city
Kansai is becoming the battery factory of the world

Sakai city
Leading companies with excellent environmental technologies are transferring to Sakai's coastal area.

Osaka
Companies in environmental and new energy industries are accumulating in the Osaka Bay area.

Hiroshima
There has been dynamic creation of new industries through the concentration of environmental industries accompanying the development of heavy and cutting-edge industries.

Kitakyushu city
Environmental energy industries are clustered here, which has overcome environmental pollution and has been chosen as an environmental model city.

Saga
Promote the concentration of related industries that spread renewable energies, introduce electric automobiles, and develop the infrastructure.
Establishment of a hub of industry-academia-government collaborations specialized in functional health food development

Kumamoto
Increasing numbers of companies related to new energy, including solar cell plants, etc. are sitting themselves here.

Kumamoto city
The clustering of solar-related companies is advancing, and the city is working on further clustering of environment-related companies.

