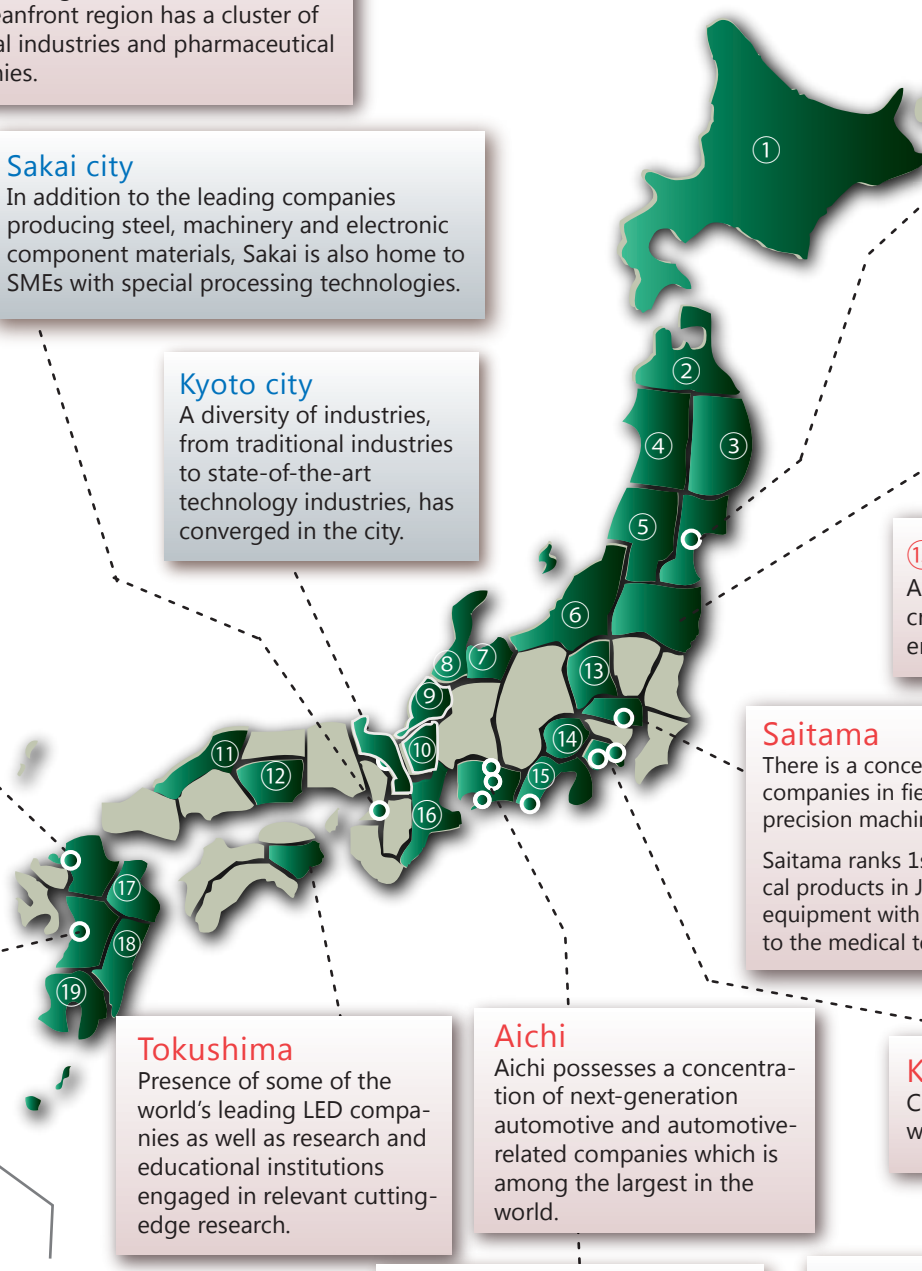
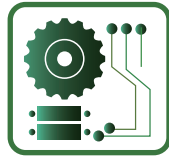


Regional Information:  
Industrial Cluster Information  
Electronics



**①Hokkaido**  
Manufacturers with international competitive edge establish facilities; industry-university-government cooperation is vigorously implemented.

**②Aomori**  
Aomori is perfectly suited as a base for the development and production of next-generation automobiles.

**③Iwate**  
Iwate Plant of Toyota Motor Corporation is a mother plant of Toyota's compact car. Increase of accumulation of automobile-related industries is expected.  
A large number of major semiconductor manufacturers and the companies in cooperation with these companies and trade partners are establishing facilities in the prefecture.

**④Akita**  
Manufacturers with international competitive edge establish facilities; industry-university-government cooperation is vigorously implemented.

**⑤Yamagata**  
A concentration of innovative, leading-edge IT-related manufacturers.

**⑦Toyama**  
A concentration of innovative, leading-edge IT-related manufacturers.  
Toyama is home to a number of technologically advanced manufacturers.

**⑧Ishikawa**  
One of the largest information services industry concentrations in Japan; has a number of globally renowned companies, such as I-O Data and PFU.

**⑥Niigata**  
Industry clusters exist for metallic product fabrication, electronics and mechanical manufacturing, general machinery manufacturing and other areas.

**⑩Shiga**  
A project that develops medical/healthcare devices, and creates local businesses of health support services utilizing the devices.

**Sendai city**  
A cluster of R&D centers for semiconductor and MEMS (microelectromechanical systems)

**⑪Tottori**  
Boasts western Japan's largest cluster of electronic device and ICT equipment firms.

**⑨Fukui**  
High-level carbon-fiber- and titanium-processing technologies are applied to automobile and medical equipment manufacturing.  
The oceanfront region has a cluster of chemical industries and pharmaceutical companies.

**Miyagi**  
Miyagi is working to promote the growth of the advanced electronic machinery industry, including electronic components, electronic machinery manufacturing and cutting-edge technology.

**⑫Okayama**  
The clustering of the ultra precise manufacturing technology companies such as automobile, agricultural machinery and shipbuilding industries.

**Sakai city**  
In addition to the leading companies producing steel, machinery and electronic component materials, Sakai is also home to SMEs with special processing technologies.

**Fukushima**  
One of the country's major "prefectures producing medical devices". Manufacturing bases of major medical devices companies and related small and medium-sized enterprises have accumulated here.  
Fukushima is working on the concentration of robot industry which has potential in disaster response, medical care, agriculture and physical distribution.

**Fukuoka city**  
The center of system LSI design and development, thanks to the concentration of semiconductor related industries in Kyushu.

**Kyoto city**  
A diversity of industries, from traditional industries to state-of-the-art technology industries, has converged in the city.

**⑬Gunma**  
Aggregation of "environment and energy related industries" creating environmental technologies and products related to energy saving, new energy and the like.

**Fukuoka**  
The growing presence of a brain trust base in "Silicon Island Kyushu," an area that produces some 5% of the world's semiconductors.

**Saitama**  
There is a concentration of research-oriented companies in fields such as optical technology, precision machining, and advanced basic materials.  
Saitama ranks 1st in shipments of the pharmaceutical products in Japan. Manufacturers of medical equipment with R&D capabilities have contributed to the medical technology improvement.

**Saitama city**  
The city features a major concentration of optical-related industry and optical technology R&D companies.

**Kumamoto**  
Center of Silicon Island, semiconductor related companies have located full-set industrial structure operations at Semicon Forest Kumamoto.

**Kumamoto city**  
A cluster of semiconductor related industries due to its rich supply of groundwater.

**Tokushima**  
Presence of some of the world's leading LED companies as well as research and educational institutions engaged in relevant cutting-edge research.

**Aichi**  
Aichi possesses a concentration of next-generation automotive and automotive-related companies which is among the largest in the world.

**Kanagawa**  
Corporate expansion is accelerating to Okinawa which is the special economic zone in Japan.

**⑰Oita**  
Major corporations engaged in world-class advanced technological development and manufacturing have relocated here, led by Toshiba, Sony, and TI Japan Incorporated.

**Toyota city**  
Toyota city defines the next generation fields of robotics as the key industry and provides a preferential system with doubled amount of incentives.

**Yokohama city**  
Many global electronic equipment, semiconductor material, optical device and other IT-related companies are located here.

**Kawasaki city**  
Develop a base for strengthening an international competitiveness in field of life science, which is a driving force of Japan's economy by using the industrial cluster of the Keihin coastal area.

**Okinawa**  
Corporate expansion is accelerating to Okinawa which is the special economic zone in Japan.

**⑱Miyazaki**  
The eastern Kyushu region is the country's leading base of blood and blood vessel-related medical equipment industries.

**Toyohashi city**  
Toyota city defines the next generation fields of robotics as the key industry and provides a preferential system with doubled amount of incentives.

**⑭Yamanashi**  
Yamanashi is quite prominent in the mechanical electronics industry.

**⑲Kagoshima**  
Advanced technology to drive the 21st century

**⑰Mie**  
Mie promotes attracting hub factories with both R&D and manufacturing functions which are authorized by the headquarters to give instructions and provide support to other factories in the country and overseas.  
Support for the establishment of Asian production bases of foreign-affiliated companies with advanced technologies

**Tahara city**  
automotive-related industries clusters

**⑮Shizuoka**  
With optical technologies as the core technology, enterprises in Shizuoka Prefecture are pushing ahead with the development and practical application of basic technologies to support next-generation industries.

**Hamamatsu city**  
An international industrial cluster in the field of an advanced opto-electronics that has the potential to become basic technology in every industry

