

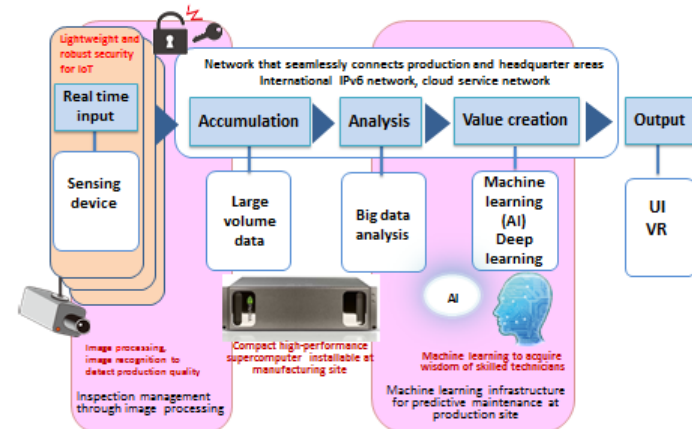
Laboratory of Hi-Think Corporation (China)

- ◆ Its parent company, Dalian Hi-Think Computer Technology, Corp. is an IT company whose Software Export to Japan is No. 1 (2016) in China, providing services mainly to Japanese companies.
- ◆ The company established a new R&D company in Kyoto Research Park to allow the mutual utilization of the latest technology in Japan and China. It worked on experimental studies on the next generation Internet standard IPv6 and a compact high-performance machine learning server system. It also conducted feasibility studies of a welfare service for the elderly by its smart house system “Amazing BOX.”
- ◆ By linking production sites of Japan and the world, and making it easier to introduce quality control and failure prediction through machine learning, the service will contribute to the overseas expansion of Japanese manufacturing companies’ technologies. It also aims to increase the efficiency and added value of the nursing care business through use of the IoT.

IoT (Manufacturing, welfare)



Implementation of production management and prediction of problem occurrence by introducing IoT at production site



<http://www.dhc.com.cn/en/index.action?locale=en>