



Invest Kitakyushu
TRANSforming the World Together

Transforming the World Together



SDGs Future City Kitakyushu



Invest Kitakyushu
TRANSforming the World Together

The government-run
Yawata Steel Works
began operation.

1901



1960s



Serious industrial
pollution

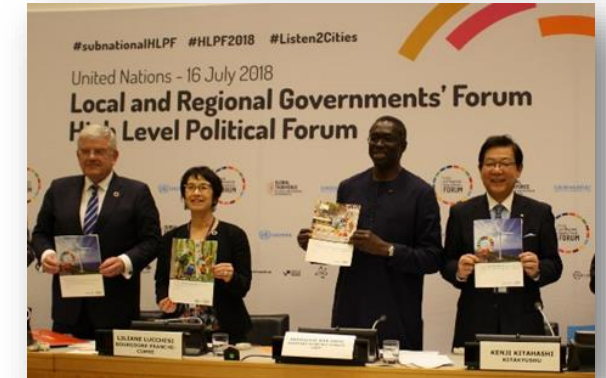


1985

“Grey city” to a “Green city” :
“marvelous metamorphosis”
according to OECD



2018

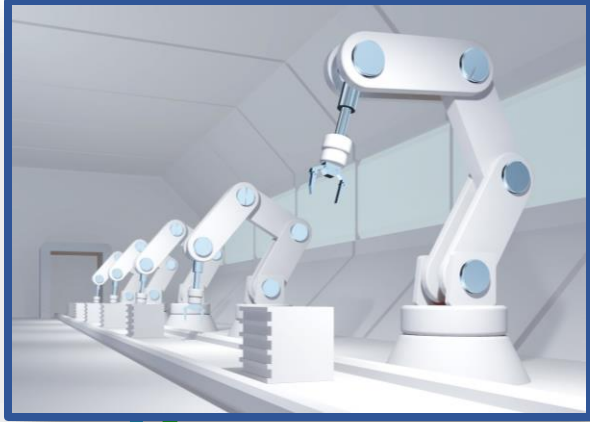


Selected by the OECD as
a Model City for Promoting
the SDGs.
Kitakyushu's Mayor
attended the High-Level
Political Forum at the UN.

Leading & Target Industries



Invest Kitakyushu
TRANSforming the World Together



Robotics Industry



Environmental Industry/
Forming Next-Generation
Energy Bases



IoT Industry



Automobile Industry

Major Industrial Players

YASKAWA Electric Corporation Headquarters: Kitakyushu City	World's leading servomotor and inverter manufacturer with its unique control technology and the world's largest cumulative number of industrial robots.
TOTO LTD. Headquarters: Kitakyushu City	60% share of the domestic sanitary ware market, TOTO has a strong presence with the "Washlet", hot water washing toilet.
ZENRIN CO., LTD. Headquarters: Kitakyushu City	A leader in the production of mapping software in Japan. The only one to offer residential maps nationwide. Developed the world's first software dedicated for GPS car navigation systems.
Mitsui High-tec, Inc. Headquarters: Kitakyushu City	A leading manufacturer of IC Lead Frames and motor cores for automobiles and home appliances.
TOYOTA MOTOR CORPORATION	One of the world's leading manufacturers of four-wheeled vehicles, with a domestic market share of over 50%. Holds Hino and Daihatsu under its group.



Kitakyushu System Integrator's Network

IT/IoT

Robotics

AI

Automation

Binging together the core strengths and technologies of 17 companies in Kitakyushu City to solve industrial productivity and digital transformation issues.



Improving productivity of SMEs

Research & Development

Kitakyushu Science & Research Park

Opened in 2001 as a one-of-a-kind experiment that brought together science and technology-related national, municipal, and private universities and research institute in a single campus.

5 universities(1 faculty, 4 graduate school)
10 research institutes
44 research & development companies
825 foreign students(28 countries)



Waseda University



Kyushu Institute of
Technology



The University of
Kitakyushu



Fukuoka University

Governmental Support for R&D



Invest Kitakyushu
TRANSforming the World Together



The Startup-Friendly City

One Stop Support

Consultation

Kitakyushu Trade & Investment Center



City of
Kitakyushu



Acceleration Program



Small Office



Subsidy

*for office renting
*for R&D ...etc.

Kitakyushu in a Nutshell



Invest Kitakyushu
TRANSforming the World Together



1 million people

13th in Japan, 2nd in the Kyushu Region
(government ordinance city)



492 Km²

145th largest in Japan



GDP: ¥ 3.7 Trillion

14th in Japan, 2nd in the Kyushu Region

=



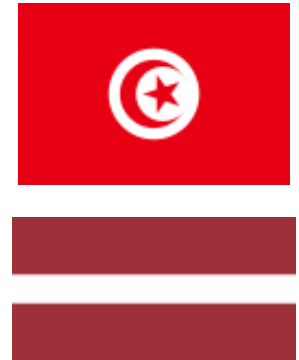
+10% growth in GDP

From 2006 to 2019



13,000 Foreign Residents

*Market potential
Is incredible !*





Enquiries → san-startup@city.kitakyushu.lg.jp



**Invest
Kitakyushu**
*TRANSforming the
World Together*