

Remote Wake on LAN

Manage Cube Wake on LAN

Specifications of Manage Cube Wake on LAN

As of August 11, 2020

Product name	Manage Cube Wake on LAN Appliance Model
Dimensions	W 115 mm × D 111 mm × H 51 mm
Weight	889g
Power supply	AC110~220V
Processor	Intel Celeron Processor
Memory capacity	2GB
SSD	32GB
LAN interface	10/100/1000 Base × 1
USB port	4 (USB3.0)
Guaranteed operating temperature	0~50°C
Other remarks	Standard 3-year warranty
	First-out sendback

*The specifications are subject to change without notice.

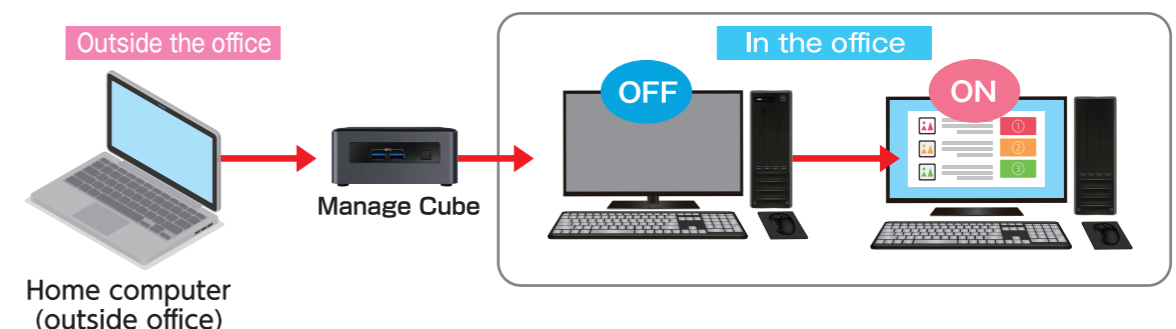


Easily start up devices on office network via home computer
Simple configuration in the browser

"Manage Cube Wake on LAN enables you to easily start up office network devices from outside the office in order to realize requests for starting up office devices remotely as needed or in disaster recovery situations, etc.

The timer function is available to start up automatically at designated date and time."

*Some devices are not supported. The device must be connected remotely.



Developer / Exclusive distributor
Actworks Co., Ltd.

Tamai Bld. West 4th Floor, 1-6-25,
Utsubohonmachi, Nishi-ku, Osaka, Japan
Opening hours: Weekdays 9:00 - 18:00

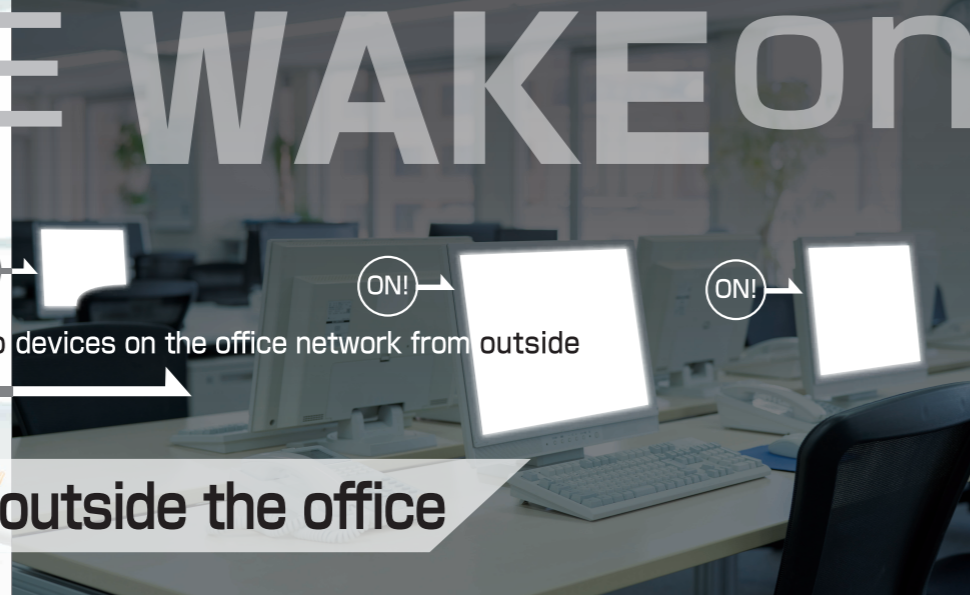
+81-6-6444-2550

Mail service@actworks.ne.jp

Contact

Actworks Co., Ltd.

REMOTE WAKE ON LAN



ON! ON! ON!
Start up devices on the office network from outside

Easily start up from outside the office

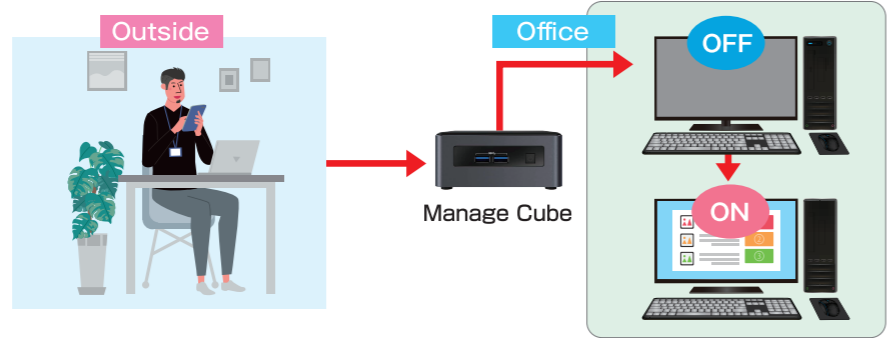
Enhanced convenience with timer function

Features

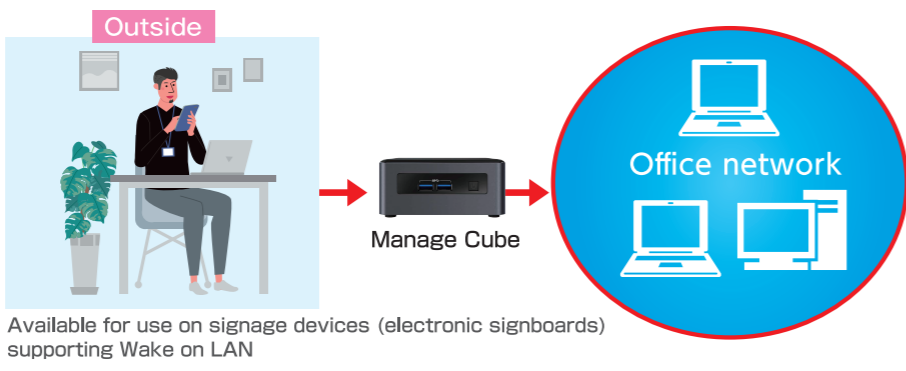
Start up

Manage Cube Wake on LAN enables you to easily start up office network devices from outside the office*. It can start up personal computers and any other device on the office network, as well as signage devices (electronic signboards) supporting Wake on LAN. Manage Cube Wake on LAN can start up 250 users (computers) at once.
*Some devices are not supported. The device must be connected remotely.

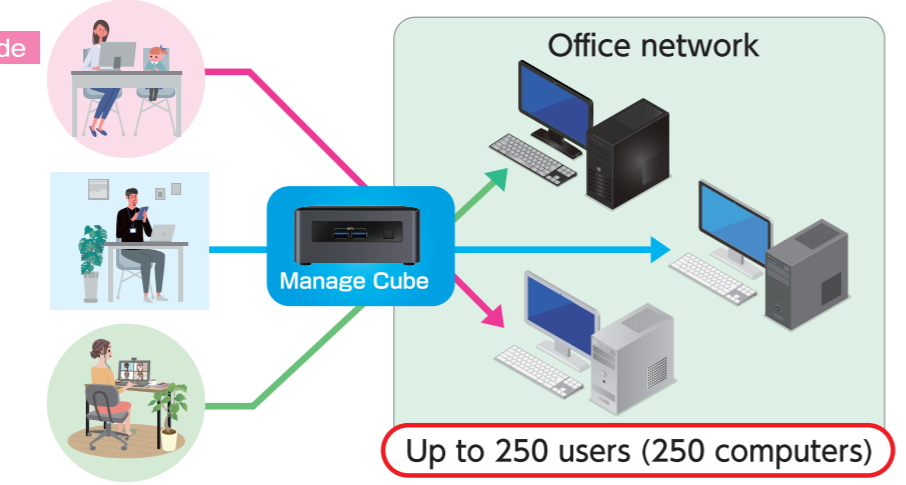
Start up your personal office computer from outside



Start up any device on office network



Multiple users start up office computers from outside



Automation

One of the advantages of Manage Cube Wake on LAN is the automatic start-up with timer settings. You can designate the date and time of the automatic start-up of each device such as "Weekdays 8:50" and "Weekends 10:00" with the timer registered on the schedule list. It enables convenient management of the network by automatically start up multiple devices at designated date and time.

Start up with timer settings

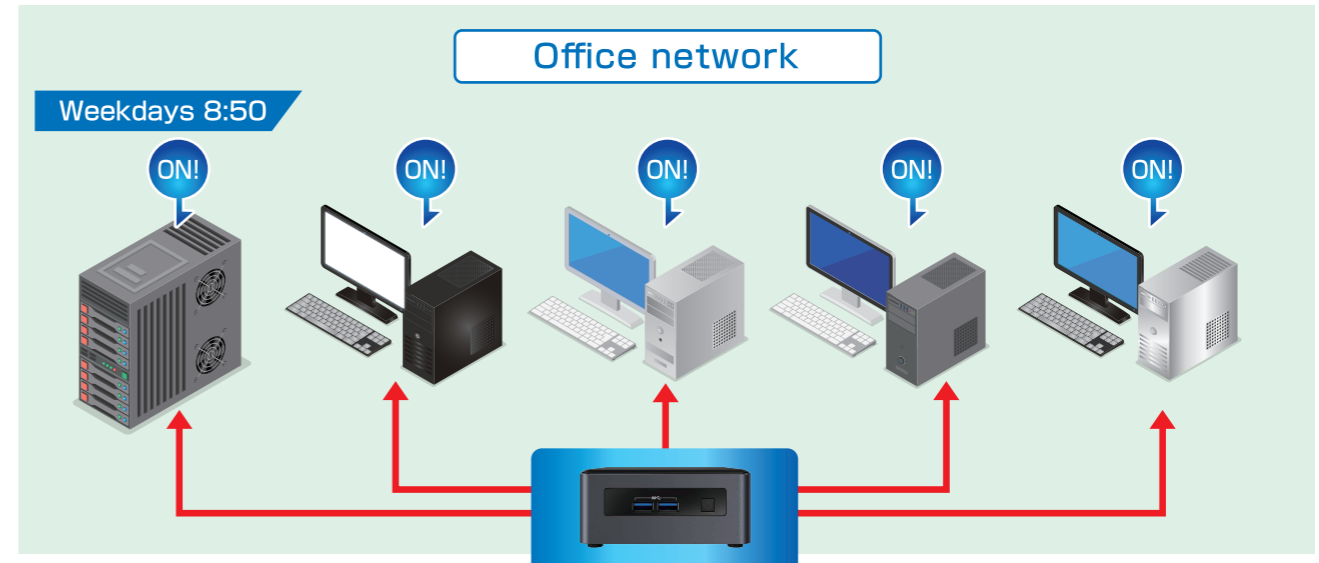
The timer enables automatic start-up at designated date and time.

List of Network Devices

No.	Status	Last update	MAC address	Vendor	IP address	NBT name	Remarks	WO	Timer
1	Registered	20-08-07 13:34	00:00:00:00:00:00	GIGA-BYTE TE	192.168.1.13	Q9450		3	Weekdays 8:50
2	Registered	20-08-07 13:34	00:00:00:00:00:00	Amazon Techn	192.168.1.30			4	Weekends 10:00
3	Registered	20-08-07 13:34	00:00:00:00:00:00	Hewlett Pack	192.168.1.32			5	Manual
4	Registered	20-08-07 13:34	00:00:00:00:00:00	Microsoft Co	192.168.1.240			4	Weekends 10:00
5	Unregistered	20-08-06 15:07	00:00:00:00:00:00	I-O DATA DEV	192.168.1.50				Disabled

Automatic start-up of office network devices with timer settings

Available for use on signage devices (electronic signboards) supporting Wake on LAN



The computer must be supporting WOL and is connected with wired LAN.