

GOHDA SYSTEM

*sustainable wastewater technology
from Japan*

By MNK Corporation

What is **GOHDA** System?

Management Technology of Activated Sludge

- ① **Examination**···**Analysis of current status**
- ② **Diagnosis**·····**Determination of cause(s)**
- ③ **Treatment**·····**Measures and solutions**
- ④ **Training for proper maintenance**

**The GOHDA system creates an
environment favourable for activated
sludge**

ADVANTAGES of GOHDA SYSTEM

- * Stable processing
- * Improvement in processing capacity
- * Building operators' confidence

REDUCTIONS IN:

- ① pH balancing chemical cost in pretreatment
- ② coagulant cost in the pretreatment stage
- ③ energy consumption by aeration equipment
- ④ coagulant cost via reduction of surplus sludge
- ⑤ disposal costs of industrial waste

Making A Favourable Environment for Activated Sludge

with NO use of :

- * micro-organisms**
- * chemicals**
- * enzymes**

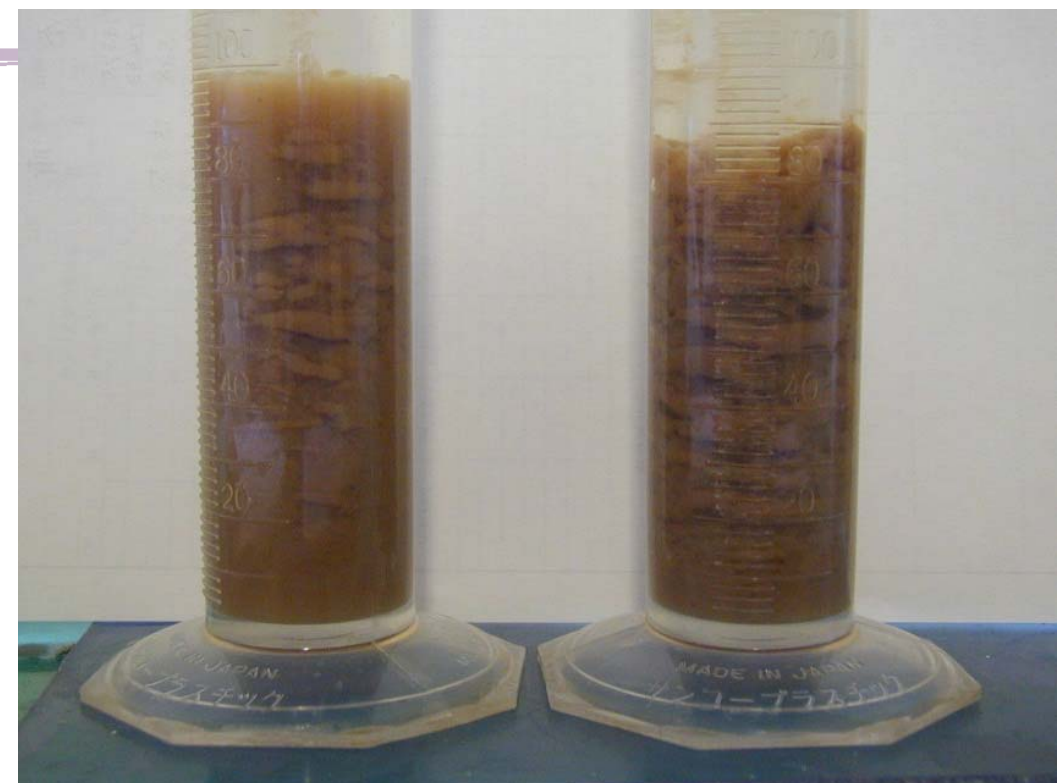
EXAMINATION

Example 1. Observation of foam⇒BOD、SS



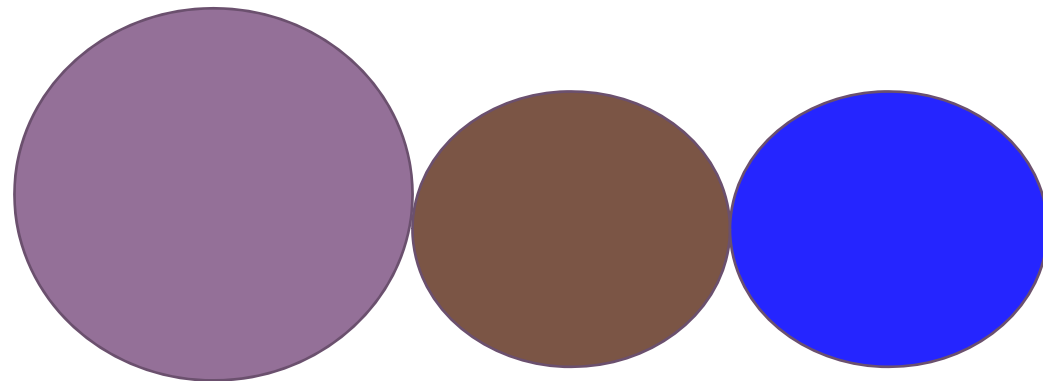
Example 2.

- **Compare SV**
- **Measure DO**
- **Identify filamentous bacteria**

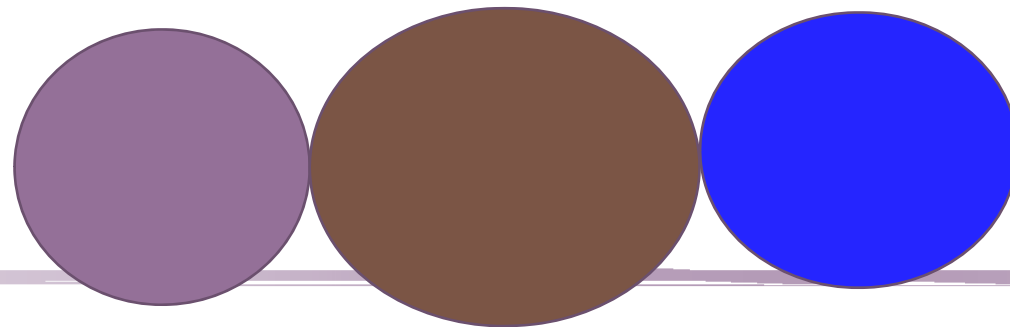


DIAGNOSIS

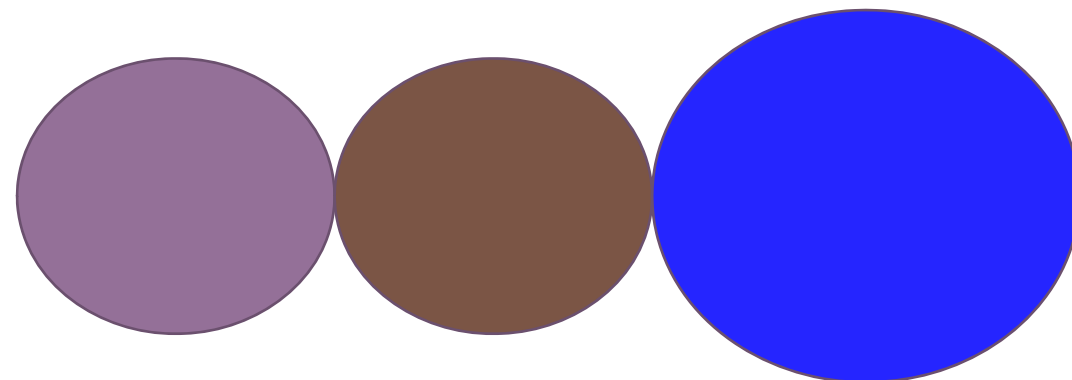
Ideal Environment



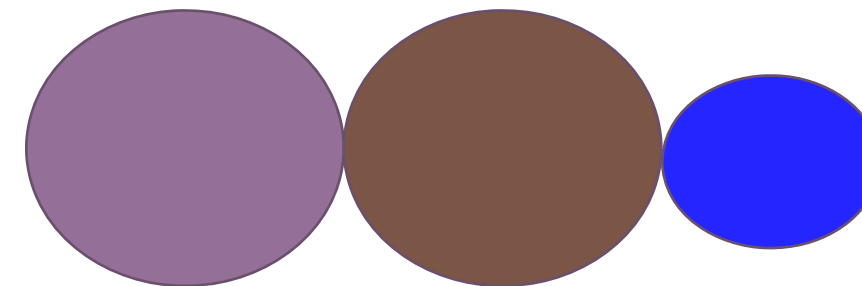
Overload



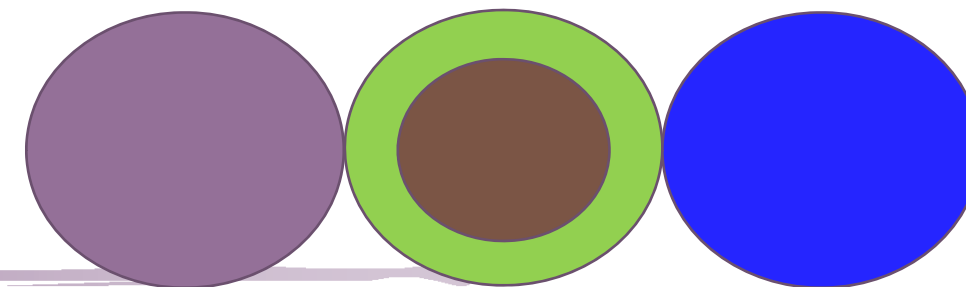
Excessive A.S.



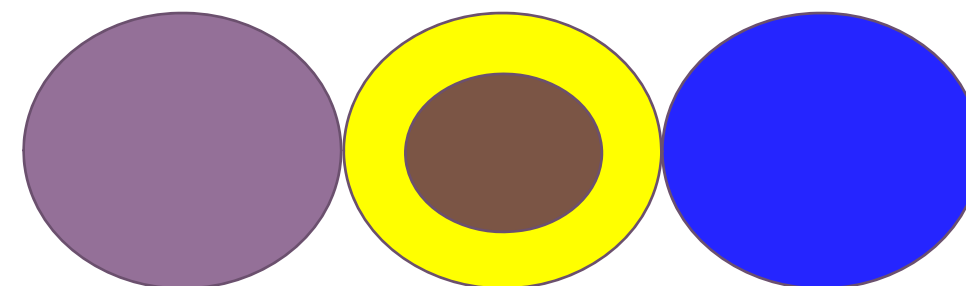
Excessive Oxygen



Lack of oxygen



Dominant filamentous bacteria & insufficient A.S.



Excessive SS & insufficient A.S.

Treatment Solutions

Example 1

Adjust the amount of oxygen

Example 2

Adjust the amount of
activated sludge

Most Favourable Working Environment for Activated Sludge



With the introduction of GOHDA:

- **Low oxygen demand: DO 0.2~0.8mg/l**
- **Low surplus sludge: 30~70% down**
- **High treatment capacity: 15~30% up**



Thank you for your attention

- ◆ **MNK Corporation**

- ◆ **Tokyo, Japan**

- ◆ **Contact us at gohda@mnk-group.co.jp**

- ◆ **Visit us at www.mizu.co.jp/English**