

Overview of Products in the Tokai Area ~Centering on Aichi~

◆ Overview:

Tokai area, located almost at the center of the Japanese archipelago, is blessed with mild climate throughout the year. The area also has a geographical advantage, with close location to the mass consumption areas of Japan, Tokyo and Osaka. Also, convenient transportation systems, such as the Bullet Trains, Highway, Airports, and sea ports gives access to business in and out of Japan.

【Agriculture】

Production of not only rice, wheat, soy beans, but vegetables, fruits, flowers, green tea, livestock products is active in each area.

【Fishery】

The Fishery Market is very active, due to rich fishing harbors such as the Mikawa Bay, Ise Bay And Suruga Bay. Aqua farming such as seaweed, sweet fish, eels and oyster is very active, and the volume of production ranks in the top class of the country.

【Food Culture】

The region has its own cuisine culture, with respect to its rich nature and mild climate. It is a region with a variation of food, ranging from locally-brewed sake, brewery(miso), livestock products(Matsuzaka beef/Hida beef), aqua farming(oyster · eels), and agriculture(tea/fruits).

Aichi-prefecture

- ◆ Population : 7,440,000
- ◆ Average Temperature : 15.8℃
- ◆ Access: (by Bullet Train)
From Tokyo: 1:40
From Osaka: 1:00

Gifu-prefecture

- ◆ Population : 2,040,000
- ◆ Average temperature : Gifu 15.5℃ Takayama 10.6℃

Shizuoka-prefecture

- ◆ Population : 3,700,000
- ◆ Average temperature : 16.5℃

Mie-prefecture

- ◆ Population : 1,840,000
- ◆ Average temperature : 16.3℃



Local Products of the Tokai Region



Gifu : HIDA Beef



Mie : Oyster



Aichi: Kishimen
(Flat Noodle)



Shizuoka : eels

Since Gifu Prefecture and Mie Prefecture are in the same economic block as the Aichi Prefecture, many companies from these prefectures are also expected to join the upcoming business meetings.

Food Products in the Tokai Area (Examples)

*Not all of the following companies will be participating in the next business meeting



Cherry Tomatoes



Pickled radish



Pastry



Sweet fish stewed in soy sauce and sugar



Black bean tea



Japanese rice cracker



INARI-Fried bean curd flavored with soy sauce & sugar



Soy sauce



Tofu (soybean curd)



Green tea (Sencha)



Dried Noodle (Kishimen)



Starchy sauce for pasta



Chocolate



Fruit vinegar



Distilled alcohol made from sweet potato or barley (Shochu)



Green tea (Matcha)



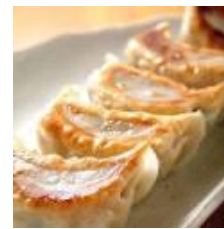
Sweet rice seasoning



Plum wine



Japanese sake



Dumpling (Gyoza) sheet



Mandarin Oranges



Agar Jelly



Tomato juice



Fruit Juice



Instant noodles



Rice vinegar



Haccho Miso (Soybean paste)



Barley flakes



Fish boiled in soy sauce



Jam



Smoked Quail Eggs



Instant miso soup



Seasoning-powder for Japanese pickles



Sushi Rice



Shrimp Sheet for Sushi Rolls



Roasted laver



Sauce for Fried Pork



Fish paste