

# Hitachi Kyoso Centre – a collaborative creation centre –

**Naohiro Furukawa**  
General Manager of R&D Centre,  
Hitachi Australia Pty Ltd

# Introduction to Hitachi

<https://www.hitachi.com>  
<https://www.hitachi.com.au/>

**HITACHI**  
Inspire the Next

US\$80.4Bn  
FY19 revenue

814 companies

71 countries

301,056+  
employees

1<sup>st</sup> July 2020,  
Completed Acquisition of  
ABB's Power Grids Business

**ABB**

US\$10.0Bn  
2017 revenue

Strategic focus on social innovation,  
answering society's challenges

33%

Reduction in CO<sub>2</sub> emissions\*

32%

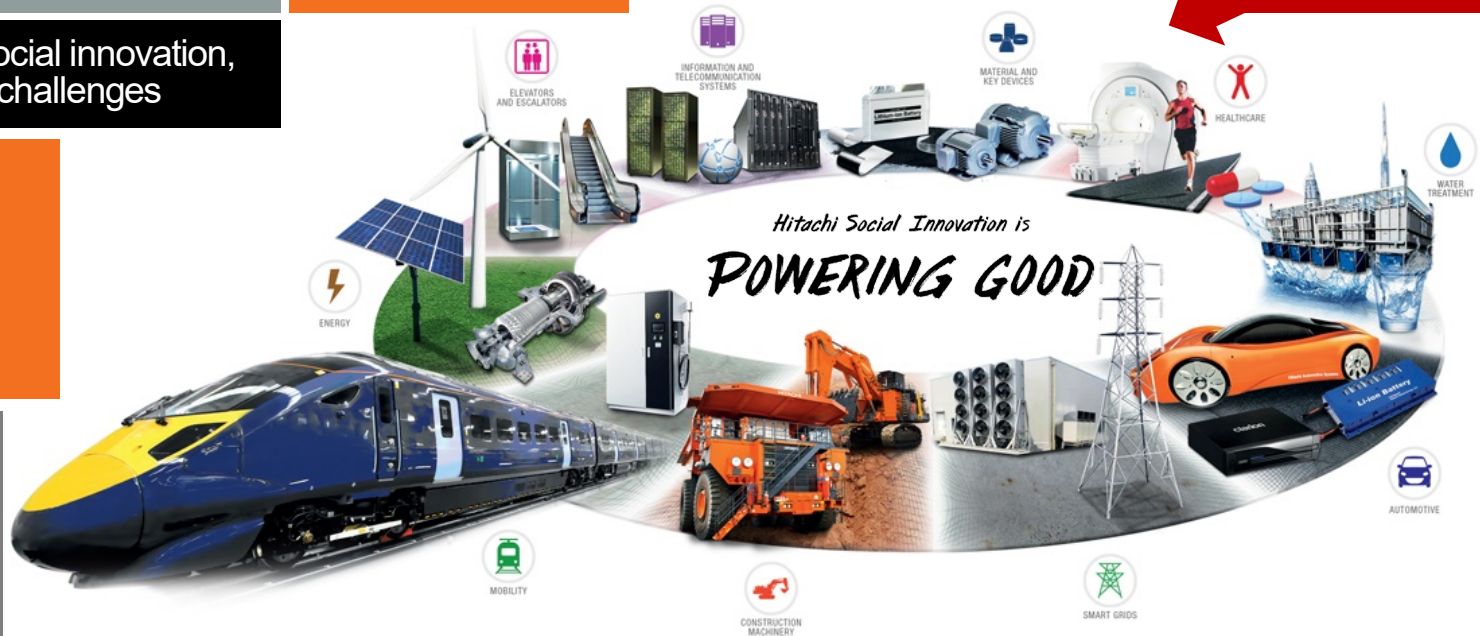
Reduction in water usage\*

US\$2.8B

invested in R&D – FY19

3.4%

R&D investment / revenue



Hitachi Social Innovation Forum 2020 for more details: <https://hsiftokyo.hitachi/en/>

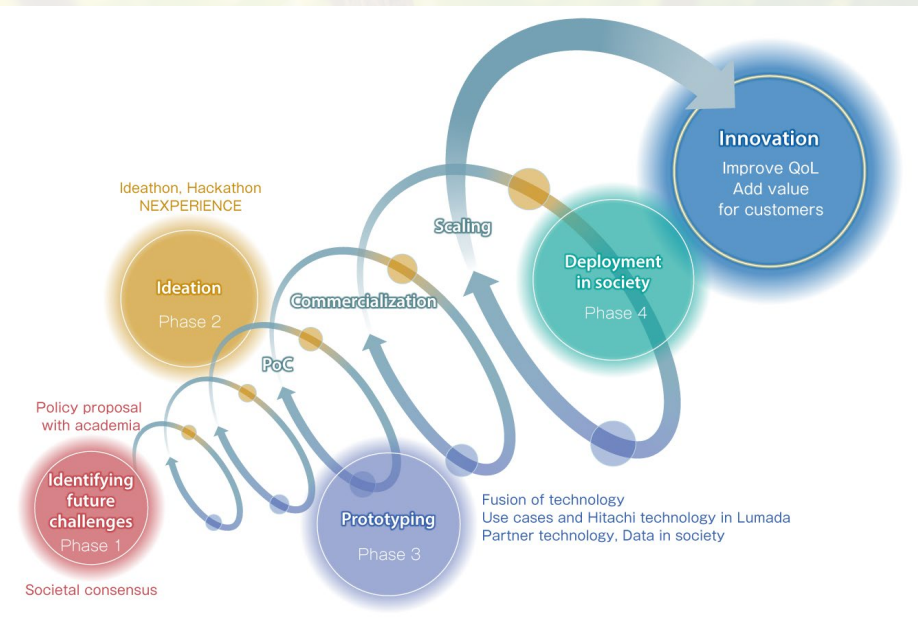
© Hitachi, Ltd. 2020. All rights reserved.



# Kyoso Centre = Collaborative Creation Centre

# 協創

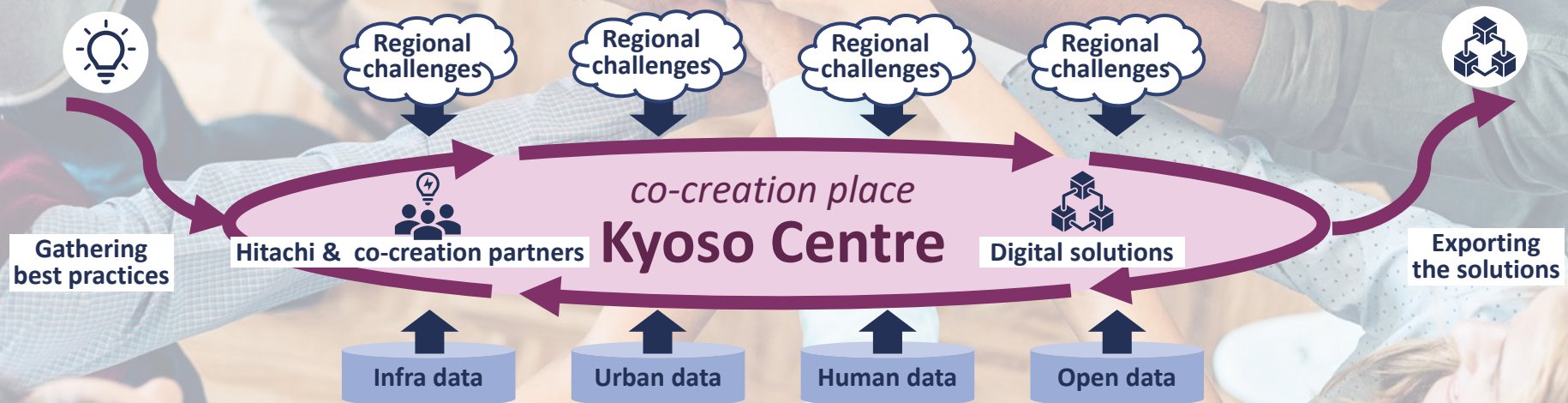
***For supporting job creations  
in Western Parkland City,  
we will develop  
an open innovation ecosystem  
together with  
the NSW government and  
co-creation partners***



# 知の空港 *Airport for Excellence*

## Kyoso Centre will be the second airport in Western Parkland City

- Gathering the world's best practices on manufacturing, logistics and so on,
- Solving regional challenges together with co-creation partners,
- Exporting the created digital solutions to the world.



# 知の空港 *Airport for Excellence*

① Connecting with the world's best practices



Team Japan

Knowledge  
& funding  
from Japan

③ Expanding business to the world



Team Japan

Opportunities  
& partners  
in Japan & Asia

②

Creating digital solutions,  
and launching new businesses



*co-creation place*  
**Kyoso Centre**

Establish an **Open Innovation Ecosystem** together with the NSW Government

- Providing an **Accelerator Program** to incubate start-ups
- Providing a **Platform** that facilitates digital solution development



## - Liaison Lab -

Opened a liaison lab in CBD Sydney in January 2020 for co-creation activity with partners & customers.



## - Hackathon -

Hitachi Hackathon for Digital Mobility 2020 was held on 8<sup>th</sup> and 9<sup>th</sup> February.



<https://social-innovation.hitachi/en-au/events/hackathon-2020>

## with Governments

- Agreed to establish Kyoso Centre w/ **the NSW Government**, Nov 2019
- Signed co-creation MoU w/ **Liverpool City Council & South Western Sydney Local Health Distinct**, May 2020

## with Research Institutes

- Signed co-creation MoU w/ **CSIRO**, Nov 2018, for new business creation
- Innovation Award, CSIRO ON Tribe 2019, Melbourne

## with Australian Industries

- **BizCubed**: Smart Platforms-as-a-Service (PaaS) in support of Digital Innovation
- **WingArc Australia**: Smart Warehouse Solution

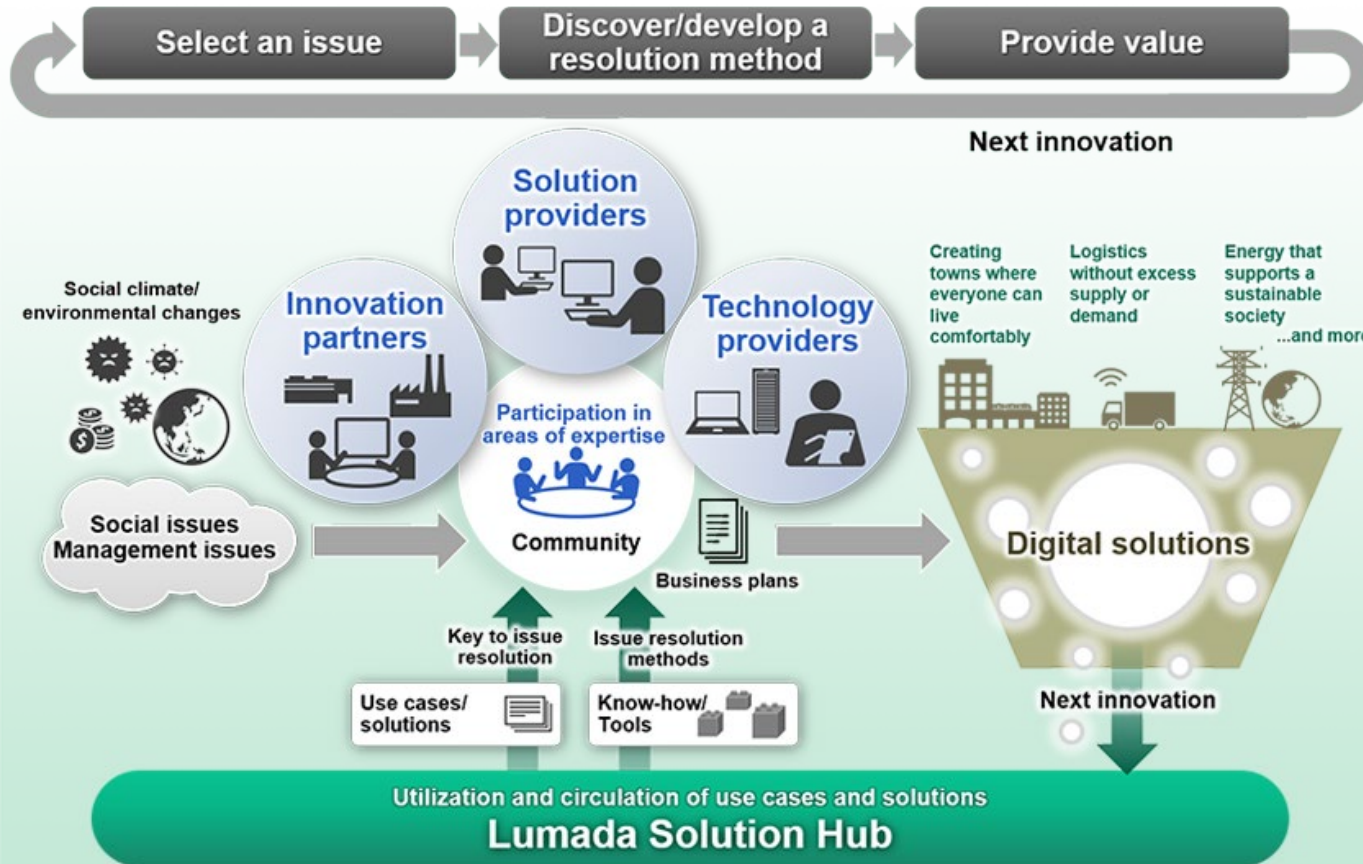
# Platform: Lumada Alliance Program

## Ecosystem to be achieved with co-creation partners

To accelerate social innovation, we are building an ecosystem in which each partner can make contributions in their area of expertise.

We provide a platform for open innovation, which can provide value and solutions to social challenges difficult to resolve by one company alone.

In this community, we create new solutions that combine the variety of knowledge and expertise of our partners. By registering the created value in the Lumada Solution Hub, the value can be utilised further, and new value can be created. This chain of value creation will bring about continuous innovation.





*Hitachi Social Innovation is*

**POWERING GOOD**