



ຮ້ານອາຫານ ແລະ ຮ້ານຄ້າຍີ່ປຸ່ນ

Japanese Restaurants

& Stores in Laos

JETRO

Japanese Food Supporters

Certification of Japanese Food and Ingredient Supporter Stores Overseas

“The Certification of Japanese Food and Ingredient Supporter Stores Overseas” program was established by the Japanese Ministry of Agriculture, Forestry and Fisheries (MAFF) in 2016. It is to certify restaurants and retail stores around the world who actively use food products or alcoholic beverages made in Japan as “Japanese Food Supporters” , and work to promote their appeal to a broad range of people.

ກາໝາຍຮັບຮອງຮ້ານທີ່ນໍາໃຊ້ ແລະ ຈໍາໜ່າຍ ເຄື່ອງບໍລິໂພກ ທີ່ຜະລິດຈາກປະເທດຍີ່ປຸ່ນ

ການຍັງຢືນ-ການຮັບຮອງຮ້ານອາຫານ ແລະ ຮ້ານທີ່ນໍາໃຊ້ ຫຼື ສະໜອງສິນຄ້າຍີ່ປຸ່ນຢູ່ຕ່າງປະເທດ

“ການຍັງຢືນ-ການຮັບຮອງຮ້ານອາຫານ ແລະ ຮ້ານທີ່ນໍາໃຊ້ ຫຼື ສະໜອງສິນຄ້າຍີ່ປຸ່ນຢູ່ຕ່າງປະເທດ” ໄດ້ຖືກສ້າງຕັ້ງຂຶ້ນ ໂດຍ ກະຊວງ ກະສິກໍາ, ປ່າໄມ້ ແລະ ການປະມົງ ຂອງຍີ່ປຸ່ນ ໃນ ປີ 2016. ເຊິ່ງກາໝາຍດັ່ງກ່າວໄດ້ເຮັດໃຫ້ບັນດາຮ້ານອາຫານ ແລະ ຮ້ານຂາຍເຄື່ອງຍ່ອຍທົ່ວໂລກຕື່ນຕົວ ແລະ ຫ້າວຫັນໃນ ການນໍາໃຊ້ສິນຄ້າປະເທດອາຫານ ຫຼື ເຄື່ອງດື່ມ(ເຫຼົ່າ)ທີ່ຜະລິດ ໃນປະເທດຍີ່ປຸ່ນ; ແລະ ການໂປຣໂໝດດັ່ງກ່າວກໍໄດ້ຮັບຄວາມ ສົນໃຈຈາກຜູ້ຄົນຢ່າງກວ້າງຂວາງ.



JETRO, or the Japan External Trade Organization, is a government-related organization that works to promote mutual trade and investment between Japan and the rest of the world. Currently, we have 49 offices in Japan and 76 offices in 55 countries around the world.

The office in Vientiane was established in 2014 and focuses on the following four areas: basic research on the economy and various regulations related to trade and investment in Laos; promotion of overseas exports by Japanese companies; collaboration between international companies including foreign companies investing in Japan; and support for Japanese companies in Laos, including improvement of the business environment.

To promote safe and delicious Japanese food and beverages to the world, the Ministry of Agriculture, Forestry and Fisheries of Japan and the JETRO have worked together by surveying to find restaurants and stores that use raw material or sell products from Japan.

< Conditions for Restaurants >

- Consistently using food ingredients and alcoholic beverages produced in Japan.
- The fact that the restaurant uses Japanese food and alcoholic beverages is displayed on the menu.
- Promoting the appeal and characteristics of Japanese food and alcoholic beverages.

< Conditions for Retail Stores >

- Consistently selling Japanese food and alcoholic beverages.
- The fact that products are Japanese foods and alcoholic beverages is indicated on the product shelf.
- Promoting the appeal and characteristics of Japanese food and alcoholic beverages

< To apply for certification >

https://www.jetro.go.jp/form5/pub/afg/supporter_apply_en



After you apply you will receive:

1. “Japanese Food Supporter Certification” from JETRO
2. Logo/Sticker (Japanese Food Supporter) of restaurant or retail store that use and sell consumer goods made in Japan.
3. Your store will also be posted on this website: <https://japan-food.jetro.go.jp/en>



Note:

Registration is free of charge

For more information, please contact to Japan External Trade Organization (JETRO) JETRO Vientiane Tel: 021 454 774



ອົງການເຈໂຕຣ (JETRO) ຫຼື ອົງການສົ່ງເສີມການຄ້າຍີ່ປຸ່ນ ແມ່ນອົງການຂອງລັດຖະບານຍີ່ປຸ່ນ ທີ່ເຮັດວຽກກ່ຽວກັບການສົ່ງເສີມການຄ້າ ແລະ ການລົງທຶນລະຫວ່າງຍີ່ປຸ່ນກັບຕ່າງປະເທດ. ຮອດປັດຈຸບັນ ພວກເຮົາມີຫ້ອງການພາຍໃນປະເທດຍີ່ປຸ່ນ 49 ຫ້ອງການ ແລະ ຢູ່ຕ່າງປະເທດ 76 ຫ້ອງການ ພາຍໃນ 55 ປະເທດໃນໂລກ. ຫ້ອງການເຈໂຕຣຢູ່ວຽງຈັນໄດ້ສ້າງຕັ້ງຂຶ້ນໃນປີ 2014 ແລະ ມີ 4 ຫ້ອງການຫຼັກຄື: ຄົ້ນຄວ້າພື້ນຖານເສດຖະກິດ-ການເມືອງ ແລະ ລະບຽບການຕ່າງໆ ທີ່ກ່ຽວຂ້ອງກັບການຄ້າ-ການລົງທຶນໃນ ສປປ ລາວ, ສົ່ງເສີມບໍລິສັດຍີ່ປຸ່ນສົ່ງອອກສູ່ຕ່າງປະເທດ, ເຮັດວຽກຮ່ວມກັນລະຫວ່າງບໍລິສັດສາກົນ ລວມທັງບໍລິສັດຕ່າງປະເທດທີ່ມາລົງທຶນໃນປະເທດຍີ່ປຸ່ນ, ສະໜັບສະໜູນບໍລິສັດຍີ່ປຸ່ນທີ່ລົງທຶນໃນລາວ ລວມທັງປັບປຸງສະພາບແວດລ້ອມທາງດ້ານເສດຖະກິດ.

ເພື່ອສົ່ງເສີມ ອາຫານ ແລະ ເຄື່ອງດື່ມ ທີ່ປອດໄພ ແລະ ແຊບຂອງຍີ່ປຸ່ນໃຫ້ທົ່ວໂລກ, ກະຊວງກະສິກໍາ ປ່າໄມ້ ແລະ ການປະມົງຍີ່ປຸ່ນ ແລະ ອົງການສົ່ງເສີມການຄ້າຍີ່ປຸ່ນ (JETRO) ໄດ້ເຮັດວຽກຮ່ວມກັນ ໂດຍການສໍາຫຼວດຫາຮ້ານທີ່ນໍາໃຊ້ວັດຖຸດິບຈາກປະເທດຍີ່ປຸ່ນແທ້ ຫຼັງຈາກນັ້ນກໍ່ຮັບຮອງ ແລະ ຍັງຍືນໂດຍການມອບກາໝາຍ “Japanese Food Supporter” ໃຫ້ບັນດາຮ້ານທີ່ໄດ້ຜ່ານການຄັດເລືອກ.

<ເງື່ອນໄຂການຮັບຮອງຮ້ານອາຫານ>

- ອາຫານທີ່ໃຊ້ວັດຖຸດິບທີ່ຜະລິດຈາກປະເທດຍີ່ປຸ່ນ, ສະໜອງເຄື່ອງດື່ມທີ່ມີທາດເຫລັກເປັນປະຈໍາ
- ໃນເມນູອາຫານ ແລະ ເຫລັກຕ້ອງຂຽນສະແດງໃຫ້ເຫັນວ່າ ເປັນຂອງຍີ່ປຸ່ນ
- ນໍາສະເໜີ ແລະ ໂຄສະນາເປັນພິເສດເຖິງຈຸດພິດເສດຂອງເຫລັກ ແລະ ວັດຖຸດິບຂອງຍີ່ປຸ່ນ

<ເງື່ອນໄຂການຮັບຮອງຮ້ານຄ້າ>

- ຈໍາໜ່າຍວັດຖຸດິບ ແລະ ເຄື່ອງດື່ມທີ່ມີທາດເຫລັກທີ່ຜະລິດຈາກປະເທດຍີ່ປຸ່ນ ເປັນປະຈໍາ
- ວັດຖຸດິບ ແລະ ເຄື່ອງດື່ມທີ່ມີທາດເຫລັກທີ່ຢູ່ໃນຖານວາງສິນຄ້າ ຂຽນສະແດງໃຫ້ເຫັນວ່າ ເປັນຂອງຍີ່ປຸ່ນ
- ນໍາສະເໜີ ແລະ ໂຄສະນາເປັນພິເສດເຖິງຈຸດພິດເສດຂອງເຫລັກ ແລະ ວັດຖຸດິບຂອງຍີ່ປຸ່ນ

<ວິທີສະໝັກ>

ກະລຸນາປະກອບຂໍ້ມູນທີ່ສໍາຄັນໃສ່ຕາມລິ້ງດັ່ງລຸ່ມນີ້:
https://www.jetro.go.jp/form5/pub/afg/supporter_apply_en



ພາຍຫຼັງທີ່ທ່ານສະໝັກແລ້ວ ທ່ານຈະໄດ້ຮັບ:

1. ໃບຢັ້ງຢືນຈາກອົງການສົ່ງເສີມການຄ້າຍີ່ປຸ່ນ ເຈໂຕຣ「Japanese Food Supporter」
2. ໂລໂກ/ສະຕິກເກີ “ກາໝາຍຮັບຮອງຮ້ານທີ່ນໍາໃຊ້ ແລະ ຈໍາໜ່າຍເຄື່ອງບໍລິໂພກ ທີ່ຜະລິດຈາກປະເທດຍີ່ປຸ່ນ” (Japanese Food Supporter)
3. ຮ້ານຂອງທ່ານຍັງຈະໄດ້ລົງໃນເວບໄຊທ໌ ນີ້ອີກດ້ວຍ:
<https://japan-food.jetro.go.jp/en>



ໝາຍເຫດ:
 ການລົງທະບຽນແມ່ນບໍ່ມີຄ່າໃຊ້ຈ່າຍ
 ສອບຖາມຂໍ້ມູນເພີ່ມຕື່ມ: ອົງການສົ່ງເສີມການຄ້າຍີ່ປຸ່ນ (JETRO) ໂທ: 021 454 774

Restaurants and Stores List

No.	Page	Map	No.	Page	Map
1	555 Restaurant	8	B-1	26	Naoki Japanese Restaurant 21 B-1,D-4 F-5
2	88 Sushi bar & Closedurant	9	Luang Prabang	27	Niku O yakiniku 21 B-1
3	AD.LIB	9	B-2	28	Omakase M1 Closed 22 B-2
4	Agora Izakaya	10	E-5	29	Osaka Fusion Buffet 22 D-4
5	cafe ango	10	E-5	30	Oshinei Vientiane, LAOS 23 C-2
6	Don Do Don Sakaba	11	E-5	31	Parkson Laos Supermarket 23 B-2
7	Dresden Lao Bar & Restaurant	11	E-5	32	Phin Tokyo Plaza 24 B-3
8	Fuji Japanese Restaurant	12	B-2	33	Qoo Japanese Restaurant 24 C-2
	fujiwara-jo		A-2	34	QueenFruit 25 B-2
9	Gohobi Sushi	12	C-3 <small>*Outside the map</small>	35	Rakuen Premium Yakiniku 25 B-2
10	Hinoki Sushi	13	Pakse	36	Rimping Supermarket Laos 26 C-2,D-4
11	Izakaya Masa Lao	13	B-2	37	Sakura shop 26 A-1
12	Izakaya Ten	14	A-2		Sakura Sushi D-4
13	Jiffy LAO	14	B-2,C-2 E-5	38	Salongxay Liquor House 27 E-5
14	Kafepa' Coffee & Cafe	15	D-4	39	Shinjuku Sushi Phontong 27 B-1
15	KIKU Japanese Restaurant	15	E-5	40	Sihom Cafe 口福 KOFUKU Japanese restaurant 28 B-2
16	Koharu Tei	16	C-1	41	Sushi Box 28 C-3 Luang Prabang
17	KOK KOK M Mart	16	B-2	42	Sushiro Japanese Fusion Cuisine 29 A-2,C-3
18	Kyushu Ramen (View Mall)	17	D-4	43	Takoyaki sihom 29 E-5,C-2
19	LA MAISON DE VANSOM	17	Savannakhet	44	Teru- ເຕຣຸ - ຫຼີ Yakiniku 30 C-2
20	Laos Samai Restaurant & Lounge	18	C-2	45	Tokyo sushi Laos 30 E-5
21	M Food and Hotpot	18	F-5	46	Tokyo Takoyaki 31 F-5
22	Makoto Japanese store	19	C-2	47	Vansom Wine Shop 31 F-5
23	Miyako Japanese Restaurant	19	A-2	48	WALAO Ramen Restaurant in Vientiane 32 E-5
24	Miyazaki Teppanyaki Laos	20	B-3	49	Yakuza Oishi Premium 32 B-2
25	Momiji Japanese Restaurant	20	F-5	50	Yokohama Japanese restaurant 33 C-2
				51	YOROKOBI 33 C-1

*Photographs are provided by each restaurants and stores.

*Data collection is in January 2024. The information may change according to the actual version from time to time.

Vientiane Capital

North Area



Northern Bus Station (NBS)

Sakura shop 37

Shinjuku Sushi Phontong 39

Lao-American College

Lao People's Army History Museum

Niku Oyakini 27

Naoki Japanese Restaurant (That Luang) 26

Koharu Tei 16

YOROKOBI 51

Qoo Japanese Restaurant 33

Makoto Japanese store 22

Embassy of Japan

Naxai Market

Teru-teru Yakini 44

KOK KOK M Mart 17

JETRO 11

Izakaya Masa Lao 11

Rimping Supermarket (Phonsinuan) 36

Oshinei Vientiane LAOS 13

Jiffy (Sa Phan Thong) 13

Takoyaki sihom (Phonthun) 43

Yokohama Japanese restaurant 60

QueenFruit 34

Yakuza Oishi Premium 49

Omakase MI 26

Phin Tokyo Plaza 32

Landmark 10

Miyazaki Teppanyaki Laos 24

Phin Tokyo Plaza 32

People's Supreme Court 11

Landmark 10

Faculty of Engineering (NUOL)

Sushiro Japanese Fusion Cuisine 1 42

Sushiro Japanese Fusion Cuisine 2 42

Sushiro Japanese Fusion Cuisine 3 42

Sushiro Japanese Fusion Cuisine 4 42

Sushiro Japanese Fusion Cuisine 5 42

Sushiro Japanese Fusion Cuisine 6 42

Sushiro Japanese Fusion Cuisine 7 42

Sushiro Japanese Fusion Cuisine 8 42

Sushiro Japanese Fusion Cuisine 9 42

Sushiro Japanese Fusion Cuisine 10 42

Asean Rd.

Souphanouvong Rd.

Miyako Japanese Restaurant 23

Izakaya Ten 12

Fujiwara jo 12

Sushiro Japanese Fusion Cuisine 2 42

Sushiro Japanese Fusion Cuisine 3 42

Sushiro Japanese Fusion Cuisine 4 42

Sushiro Japanese Fusion Cuisine 5 42

Sushiro Japanese Fusion Cuisine 6 42

Sushiro Japanese Fusion Cuisine 7 42

Sushiro Japanese Fusion Cuisine 8 42

Sushiro Japanese Fusion Cuisine 9 42

Sushiro Japanese Fusion Cuisine 10 42

Sushiro Japanese Fusion Cuisine 11 42

Sushiro Japanese Fusion Cuisine 12 42

Sushiro Japanese Fusion Cuisine 13 42

Sushiro Japanese Fusion Cuisine 14 42

Sushiro Japanese Fusion Cuisine 15 42

Sushiro Japanese Fusion Cuisine 16 42

Sushiro Japanese Fusion Cuisine 17 42

Sushiro Japanese Fusion Cuisine 18 42

Sushiro Japanese Fusion Cuisine 19 42

Sushiro Japanese Fusion Cuisine 20 42

Sushiro Japanese Fusion Cuisine 21 42

Sushiro Japanese Fusion Cuisine 22 42

Center Area

Khoun Bouloum Rd.

Samsenthai Rd.

Setthathirath Rd.

Chao Anouvong National Stadium

That Dam

Namphu Fountain

Presidential Palace

Chao Anouvong Park

Hoprao Hospital

Manosot Hospital

Don Chan Palace

The Little House

Si Muang

COPE Visitor Centre

Phin Tokyo Plaza 32

Phin Tokyo Plaza 32

Phin Tokyo Plaza 32

Phin Tokyo Plaza 32

Phin Tokyo Plaza 32

Phin Tokyo Plaza 32

Phin Tokyo Plaza 32

Phin Tokyo Plaza 32

Phin Tokyo Plaza 32

Phin Tokyo Plaza 32

Phin Tokyo Plaza 32

Phin Tokyo Plaza 32

Phin Tokyo Plaza 32

Phin Tokyo Plaza 32

555 Restaurant 1

Thongkankham Market

Nongduang Market

Chinese Market

Crowne Plaza

AD.LIB 3

JICA

Lao-Japan Budo Center

Chao Anouvong National Stadium

That Dam

Namphu Fountain

Presidential Palace

Chao Anouvong Park

Hoprao Hospital

Manosot Hospital

Don Chan Palace

The Little House

Si Muang

COPE Visitor Centre

Phin Tokyo Plaza 32

Phin Tokyo Plaza 32

Phin Tokyo Plaza 32

Phin Tokyo Plaza 32

Phin Tokyo Plaza 32

Phin Tokyo Plaza 32

Phin Tokyo Plaza 32

Phin Tokyo Plaza 32

Phin Tokyo Plaza 32

Phin Tokyo Plaza 32

Phin Tokyo Plaza 32

Phin Tokyo Plaza 32

Phin Tokyo Plaza 32

Phin Tokyo Plaza 32

Vientiane High School

Prime Minister's Office

Patuxay

Governor Office of Vientiane Capital

Consulate of Thailand 17

JETRO 11

Izakaya Masa Lao 11

Parkson Laos Supermarket 31

Rakuen Premium Yakini 35

Sihom Cafe KOFUKU Japanese restaurant 40

Sihom Cafe KOFUKU Japanese restaurant 40

Sihom Cafe KOFUKU Japanese restaurant 40

Sihom Cafe KOFUKU Japanese restaurant 40

Sihom Cafe KOFUKU Japanese restaurant 40

Sihom Cafe KOFUKU Japanese restaurant 40

Sihom Cafe KOFUKU Japanese restaurant 40

Sihom Cafe KOFUKU Japanese restaurant 40

Sihom Cafe KOFUKU Japanese restaurant 40

Sihom Cafe KOFUKU Japanese restaurant 40

Sihom Cafe KOFUKU Japanese restaurant 40

Sihom Cafe KOFUKU Japanese restaurant 40

Sihom Cafe KOFUKU Japanese restaurant 40

Sihom Cafe KOFUKU Japanese restaurant 40

Sihom Cafe KOFUKU Japanese restaurant 40

Sihom Cafe KOFUKU Japanese restaurant 40

Sihom Cafe KOFUKU Japanese restaurant 40

Sihom Cafe KOFUKU Japanese restaurant 40

Sihom Cafe KOFUKU Japanese restaurant 40

Sihom Cafe KOFUKU Japanese restaurant 40

Sihom Cafe KOFUKU Japanese restaurant 40

Dongpalane Rd.

Lane Xang Rd.

Talat Sao

Central Bus Station (CBS)

Vientiane Life Center

Vientiane Center

Chao Anouvong National Stadium

That Dam

Namphu Fountain

Presidential Palace

Chao Anouvong Park

Hoprao Hospital

Manosot Hospital

Don Chan Palace

The Little House

Si Muang

COPE Visitor Centre

Phin Tokyo Plaza 32

Phin Tokyo Plaza 32

Phin Tokyo Plaza 32

Phin Tokyo Plaza 32

Phin Tokyo Plaza 32

Phin Tokyo Plaza 32

Phin Tokyo Plaza 32

Phin Tokyo Plaza 32

Phin Tokyo Plaza 32

Phin Tokyo Plaza 32

Phin Tokyo Plaza 32

Chinami Water Treatment Plant

Chinami Water Treatment Plant

Chinami Water Treatment Plant

North Area

- National University of Laos (NUOL)
- Laos-Japan Institute
- Southern Bus Station (SBS)
- Naoki Japanese Restaurant (Dongdok) 26
- Sakura Sushi
- Osaka Fusion Buffet 29
- Kyushu Ramen (View Mall) 18
- Rimping Supermarket (View Mall) 36
- Dmart Dongdok
- Lao National Museum
- Kaysone Phomvihane Museum
- National Convention Center (NCC)
- Kafepa' Coffee & Cafe 14
- Mittaphab Hospital
- International Cooperation Training Center (ICTC Lao-Japan)
- Lao National Chamber of Commerce and Industry (LNCCI) / SME Service Center

1 km scale bar



2 88 Sushi bar & Restaurant

Restaurant



Recommended menu Tempura roll

Japanese raw materials KODAWARI UME LIQUEUR FROM WAKAYAMA, JAPAN

Embark on a culinary journey to Japan at 88 Sushi bar & Restaurant. Savor a tapestry of exquisite dishes, each crafted with the finest ingredients and meticulous care. Two serene zones await, bathed in cool air and soothing music, offering a perfect backdrop for the joy of good food with loved ones. Indulge your senses and discover the art of dining at 88.

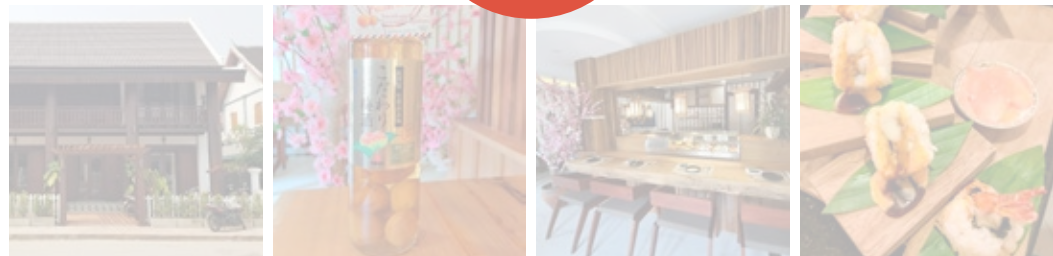
Map



Luang Prabang

Closed

ຍິນດີຕ້ອນຮັບທຸກທ່ານມາແວ່ຊີມອາຫານທີ່ຮ້ານເຮົາໄດ້ເລືອກຊົມເຊີຍສະຕາຍຢູ່ບຸນຫຼາກຫຼາຍໃຫ້ທ່ານໄດ້ເລືອກຊົມເຊີຍເປັນລາຄາທີ່ທຸກທ່ານຈັບຕ້ອງໄດ້ຢ່າງແນ່ນອນ ບັນຍາຍໃຫ້ທ່ານໄດ້ເລືອກ, ມີແຜ່ນງູ່ພ້ອມທັງມີສຽງດົນຕີທີ່ມີຄວາມຜ່ອນຄາຍ ທຸກທ່ານສາມາດຊົມພ້ອມກັບຜູ້ພ້ອມ, ແຜນ ມາແວ່ຊີມອາຫານຮ້ານເຮົາໄດ້.



Tel +856 20 9191 9169 **Business hour** Open daily 10:00-14:00, 17:00-21:00 / Tuesday 17:00-21:00

ຮ້ານອາຫານ 555

1 555 Restaurant

Restaurant



Recommended menu Fried Fish

Japanese raw materials GINREI SHIRO SAKE FROM KUMAMOTO, JAPAN

We are run a small Japanese restaurant with only 4 tables. This is a restaurant where you can easily enjoy Japanese home cooking as you're eating at home.

ພວກເຮົາເປີດຮ້ານອາຫານຢູ່ບຸນນ້ອຍໆ 4 ໂຕະ, ເປັນຮ້ານອາຫານທີ່ສາມາດມ່ວນຊື່ນກັບການເຮັດອາຫານຄ້າຍຄືເຮັດກິນຢູ່ເຮືອນ.

Map



Tel +856 20 5844 6817 **Business hour** Wednesday-Sunday 17:00-22:00 / Closed on Monday and Tuesday

3 AD.LIB

Restaurant



Recommended menu OMAKASE STYLE. We change menu every 2months.

Japanese raw materials ASAHI BEER FROM TOKYO, JAPAN

Serving a Western fine dining experience with a touch of Japanese cuisine.

ການນໍາສະເໜີອາຫານໂດຍໃຊ້ເຕັກນິກການປຸງແຕ່ງອາຫານແບບຕາເວັນຕົກທີ່ປະສົມປະສານວັດຖຸດິບຈາກຍີ່ປຸ່ນ

Map



Tel +856 20 5626 6646 **Business hour** Wednesday-Sunday 19:00-22:30

ຮ້ານອາຫານ ອາໂກຣະ

4 Agora Izakaya

Restaurant



Recommended menu Moguro Sashimi **Japanese raw materials** SAKE FROM FUKUSHIMA, JAPAN

Agora is a modern izakaya located in the city of Vientiane. We offer tapas and drinks inspired by Japanese cuisine. In addition, we serve fresh sashimi grade seafood airflown from Tokyo giving customers the best quality sashimi and sushi.

ອາໂກຣະ ເປັນຮ້ານກິນດື່ມທີ່ທັນສະໄໝ ທີ່ຕັ້ງຢູ່ໃນຕົວເມືອງນະຄອນຫຼວງວຽງຈັນ. ພວກເຮົານຳສະເໜີຂອງແກ້ມ ແລະ ເຄື່ອງດື່ມ ທີ່ໄດ້ຮັບແຮງບັນດານໃຈຈາກອາຫານຍີ່ປຸ່ນ. ນອກຈາກນີ້, ພວກເຮົາຍັງເສີບຊາຊີມິທີ່ມີເກຣດ ແລະ ອາຫານທະເລສົດໆຈາກໂຕກຽວ ມາມອບໃຫ້ລູກຄ້າ. ໂດຍສະເພາະແມ່ນ ຊາຊີມິ ແລະ ຊຸຊິ ຄຸນນະພາບດີທີ່ສຸດ.

Map



Tel +856 20 5552 8502 **Business hour** Monday-Saturday 11:00-14:00, 17:30-22:00 / Closed on Sunday

ຮ້ານ ຄາເຟອັງໂກະ

5 cafe ango

Restaurant



Recommended menu Avocado tomato & chicken served on salad with rice

Japanese raw materials MATCHA FROM SHIZUOKA, JAPAN

Cafe ango has been running for 8 years. We offer Japanese home cooking, fermented foods, healthy vegan dishes, and home-roasted coffee.

ຄາເຟອັງໂກະເປີດມາໄດ້8ປີແລ້ວ. ພວກເຮົານຳສະເໜີອາຫານຍີ່ປຸ່ນ, ອາຫານດອງ, ອາຫານສຸຂະພາບ ແລະ ການເຜີ້ວສົດໆ.

Map



Tel +856 20 5859 7081 **Business hour** Tue-Fri 11:30-16:00, 17:30-21:00 / Sat-Sun 11:30-18:00 / Closed on Monday

6 Don Do Don Sakaba

Restaurant



Recommended menu Gyoza fried

Japanese raw materials SUNTORY WHISKY FROM YAMAZAKI, JAPAN

Big gyoza? Big fun! Come Don Do Don Sakaba, share beers, share laughs, share giant dumplings! Frosty drinks, juicy bites, happy nights! Don Do Don is the place! Forget tiny snacks! Get monster gyoza! Don Do Don, your spot for beer, friends, and big fun!

ຮ້ານເຮົາມີກ້ຽວຊາໄສ້ແໜ້ນໆ ຄຳໃຫຍ່ໆ ຍິ່ງກິນຄູ່ກັບເບຍແຊບແຮງເຂົ້າກັນທີ່ສຸດ

Map



Tel +856 30 50 28 754 / +856 20 5730 5567 **Business hour** Open daily 11:00-23:00

7 Dresden Lao Bar & Restaurant

Restaurant



Recommended menu Mixed grill, Japanese-style hamburger, pasta, and various snacks

Japanese raw materials CHOYA YUZU FROM TOKYO, JAPAN

Enjoy cocktails made with homemade special ice, a variety of alcoholic beverages and food.

ເພີດເພີນໄປກັບຄັອກເທວທີ່ໃສນ້ຳກ້ອນທາງຮ້ານຜະລິດເອງໃນແບບຂອງພວກເຮົາ ພ້ອມກັບເຄື່ອງດື່ມແອວກໍ່ສ່ຽງກຫຼາຍຊະນິດ ແລະ ອາຫານ.

Map



Tel +856 21 244 241 **Business hour** Mon-Fri 17:00-24:00 / Sat 17:00-23:30 / Closed on Sunday and Laos public holidays

ຮ້ານອາຫານຍີ່ປຸ່ນ ພູຈິ

8 Fuji Japanese Restaurant Laos



Restaurant



Recommended menu DONBURI **Japanese raw materials** WAGYU FROM KAGOSHIMA, JAPAN

We never stop searching for the best taste. ພວກເຮົາບໍ່ເຄີຍຢຸດການຊອກຫາລິດຊາດທີ່ດີທີ່ສຸດ

Map



Tel +856 20 5709 7082 / +856 30 5636 173 **Business hour** Open daily 11:00-15:00, 17:00-21:00

ຮ້ານ ໂກໂຮບິ ຊູຊິ

9 Gohobi Sushi

Restaurant



Recommended menu SASHIMI BIG SHIP **Japanese raw materials** SAKE FROM HYOGO, JAPAN

The best Japanese buffet. ບຸບເພື່ອາຫານຍີ່ປຸ່ນສຸດຄຸ້ມ

Map



Tel +856 20 2894 1565 **Business hour** Open daily 11:00-22:00 (Kitchen closed at 21:30)

ຮ້ານອາຫານ ຮິໂນກິ ຊູຊິ

10 Hinoki Sushi

Restaurant



Recommended menu Sashimi mix 9 **Japanese raw materials** KIKUMASA SAKE FROM KOBE, JAPAN

Crave sushi? Hinoki serves over 100 dishes with love, buffet or à la carte, all from quality you can taste. Hinoki masters remember every bite. Indulge in endless variety or crafted classics, where fresh meets flavor. 100+ reasons to love sushi. Hinoki's buffet overflows with passion or choose your favorites like an artist. Quality guaranteed.

Map



Pakse

ເສີບເມນູດ້ວຍໃຈ ວັດຖຸດິບຄຸນນະພາບ ບຸບເພີ່ ແລະ ອາລາຄາສ ພ້ອມເມນູໃຫ້ເລືອກຫຼາຍກວ່າ 100 ລາຍການ.



Tel +856 30 4440 865 / +856 20 5598 6969 (WhatsApp) **Business hour** Open daily 10:00-22:00

ຮ້ານອາຫານຍີ່ປຸ່ນ ອິຊາກາຍາ ມາສາ ລາວ

11 Izakaya Masa Lao

Restaurant



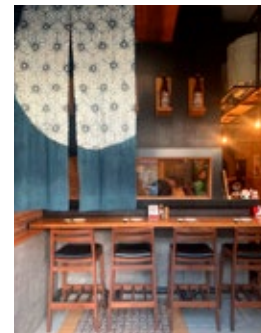
Recommended menu YAKITORI **Japanese raw materials** UNI KANI MISO FROM OSAKA, JAPAN

Your heart will sing while feasting on the freshest seasonal seafood in Vientiane! Every bite explodes with sweetness and delight. Come on down and experience entertainment dining you won't forget!

Map



ຮ້ານກິນດີ້ມ ອິຊາກາຍາ ມາສາ ລາວ ເສີບຄວາມແຊບ ກັບປາສິດໆຕາມລະດູການ ຫາກິນຍາກຫລາຍ ລິດຊາດຫວານແຊບ



Tel +856 21 261 634 **Business hour** Monday-Saturday 11:30-14:00, 17:30-22:30 / Sunday closed

12 Izakaya Ten



Recommended menu TONKATSU RAMEN
Japanese raw materials SAKE JELLY SHOT FROM HYOGO, JAPAN

New in town, authentically Japanese! Izakaya Ten brings Japan's vibrant flavors to Vientiane. From steaming ramen & delicate gyoza to crispy karaage & melt-in-your-mouth miso egg-plant, discover your new favorite spot.

ສະບາຍດີທາງຮ້ານ IZAKAYA TEN ເປັນຮ້ານທີ່ເປີດໃໝ່ ເປັນຮ້ານອາຫານຍີ່ປຸ່ນລົດຊາດຍີ່ປຸ່ນແທ້ໆ ທາງຮ້ານເຮົາ ມີອາຫານຫຼາກຫຼາຍຢ່າງ ເມນູຍອດຮິດຂອງທາງຮ້ານແມ່ນ: ລາເມັງ, ກ້ຽວຊາ, ທອດໂກຍີ່ປຸ່ນ, ທອດໝາກເຂື່ອມໂຊເຊ.

Map



Tel +856 20 5784 3016 **Business hour** Open daily 12:00-23:00

ຈິບພີ ລາວ 13 Jiffy LAO

Mini-market, Retailer



Japanese raw materials Retailer of Thai, Korea, Lao, Japanese products etc. We sell goods imported from abroad, including Japanese product.

Jiffy Lao convenience store has a variety of quality products for you. You can buy products now. We have 26 branches in Lao PDR.

ຮ້ານສະດວກຊື້ຈິບພີລາວສິນຄ້າຄຸນນະພາບຫຼາກຫຼາຍຢ່າງໃຫ້ທ່ານໄດ້ເລືອກຊື້ໄດ້ເລີຍ. ບັດຈຸບັນມີ 26ສາຂາໃນ ສປປ ລາວ.

Map



Nar Sai

Map



Mekong



Business hour Open daily 06:00-22:00

ກາເຟປາ 14 Kafepa' Coffee & Cafe



Recommended menu Beef Curry **Japanese raw materials** S&B GOLDEN CURRY FROM NAKANO, JAPAN

<A Cup Of Love & Respect> kafepa' Coffee have been developed from the love and fascination of Lao coffee grown naturally in the forest. The study of coffee beans began in September 2018, and it took 2 years to develop coffee products. In January 2020, we launched roasting service after ordering for customer who like fresh roasted coffee.

<ຈອກແຫ່ງຄວາມຮັກ ແລະ ຄວາມເຄົາລົບ> kafepa' ກາເຟແມ່ນໄດ້ສຶກສາ ແລະ ພັດທະນາຈາກຄວາມຮັກ ແລະ ຄວາມປະທັບໃຈຂອງກາເຟລາວທີ່ປູກຕາມທຳມະຊາດໃນປ່າ. ການສຶກສາກ່ຽວກັບເມັດກາເຟໄດ້ເລີ່ມຂຶ້ນໃນເດືອນກັນຍາ 2018 ແລະ ໃຊ້ເວລາ 2 ປີໃນການພັດທະນາຜະລິດຕະພັນກາເຟ ແລະ ໃນເດືອນມັງກອນ 2020, ພວກເຮົາໄດ້ເປີດຕົວຜະລິດຕະພັນກາເຟຂອງ kafepa ໂດຍມີບໍລິການອົບຕາມສັງສຳລັບລູກຄ້າທີ່ມັກກາເຟຂົ້ວສົດໆ.

Map



Tel +856 20 5593 7118 **Business hour** Open daily 07:30-17:00

ຮ້ານອາຫານຍີ່ປຸ່ນຄິຄູ 15 KIKU Japanese Restaurant



Recommended menu KANI MISO **Japanese raw materials** HAKUTSURU SAKE FROM KOBE, JAPAN

Come and dine at Kiku Japanese Restaurant. You will be experiencing with authentic Japanese food. In addition with the atmosphere like sitting and eating in Japan!!

ມາສຳຜັດຄວາມເປັນຍີ່ປຸ່ນແບບເຕັມໆ ທີ່ຮ້ານອາຫານຍີ່ປຸ່ນ ຄິຄູ ນອກຈາກອາຫານລົດຊາດແບບຍີ່ປຸ່ນແທ້ໆ ແລ້ວຍັງໄດ້ບັນຍາກາດຄືທ່ານນັ່ງຮັບປະທານຢູ່ທີ່ຍີ່ປຸ່ນເລີຍ!!

Map



Tel +856 21 218800 Ext.1199 / +856 20 5721 8800 (Whatsapp) **Business hour** Open daily 11:00-21:00

ຮ້ານອາຫານຍີ່ປຸ່ນ ໂຄຮາຣີ
16 Koharu Tei



Recommended menu TONKATSU

Japanese raw materials X BULL-DOG TONKATSU SAUCE FROM SAITAMA, JAPAN

Want yummy Japanese food and amazing sake? Come to Koharu Tei! We love happy customers, so you come first! Enjoy fresh sushi, tasty snacks, and delicious drinks in a friendly place. We make everything just like in Japan! So come hungry, leave happy! Koharu Tei: your new favorite Japanese spot!

Map



ລູກຄ້າຄືອັນດັບ1. ທ່ານໃດທີ່ມັກເຫລົ້າສາເກຍີ່ປຸ່ນ ແລະ ກັບແກ້ມແຊບໆສະໄຕຍີ່ປຸ່ນ ຂໍເຊີນຊວນທ່ານມາຊົມໄດ້ທີ່ຮ້ານ ໂຄຮາຣີ



Tel +856 20 5285 6496 / +856 20 5678 2662 **Business hour** Mon-Sat 11:00-14:30, 17:00-23:00 / Sun 11:00-15:00 evening closed

ກ້ອກ ກ້ອກ ເອັມ
17 KOK KOK M Mart

Supermarket, Retailer



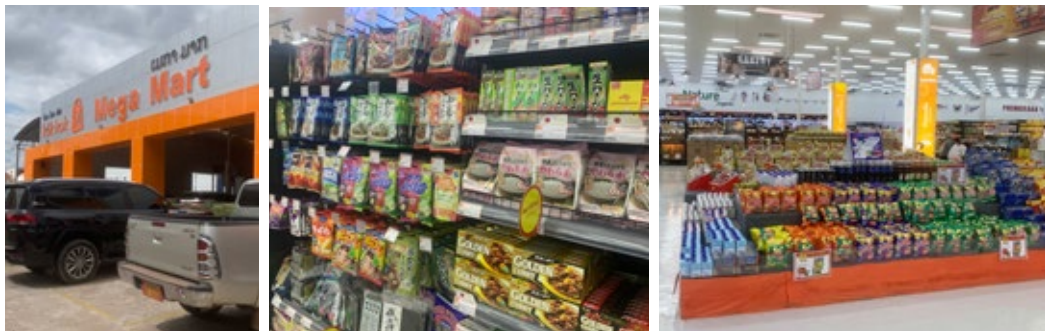
Recommended products Retailer of Thai, Korea, Lao, Vietnamese, Japanese products etc. We sell goods imported from abroad, including Japanese product.

Kok Kok M Mart officially opened its first hypermarket (8,000 S/M) in March 2023 and has ranked at #1 Franchise and wholesale mart in Laos in such a short period.

Map



ຫ້າງສັບພະສິນຄ້າ ກ້ອກ ກ້ອກ ເອັມ ໄດ້ເປີດ ເປັນhypermarket(8,000 S/M)ແຫ່ງທຳອິດໃນເດືອນມີນາ ປີ2023ຢ່າງເປັນທາງການ, ແລະ ໄດ້ຈັດອັນດັບທີ່1ໃນທຸລະກິດພຣານຊາຍຂາຍຍົກໃນລາວພາຍໃນຊ່ວງເວລາອັນສັ້ນໆ.



Tel +856 20 5830 0087 **Business hour** Office: Mon-Fri 08:00-17:00 / Store: Open daily 09:00-21:00

ຮ້ານອາຫານຍີ່ປຸ່ນ ຄິວຊູ ຮາແມັງ
18 Kyushu Ramen (View Mall)

Restaurant



Recommended menu KYUSYU RAMEN

Japanese raw materials SAPPORO BEER FROM HOKKAIDO, JAPAN

WE ARE SERVING JAPANESE RAMEN, TONKOTSU, GYOZA, KARAAGE.

ຮ້ານເຮົາຂາຍ ລາແມັງຍີ່ປຸ່ນ, ທົງກາຊີ, ກ້ຽວຊ່າ, ຄາລະເກະ

Map



2nd Floor



Tel +856 21 716 058 **Business hour** Open daily 11:00-21:00

19 LA MAISON DE VANSOM

Mini-market, Wholesale and Retailer



Japanese raw materials Retailer and wholesaler wine and products from France. We sell goods imported from abroad, including DAISEKKEI SAKE FROM NAGANO, JAPAN.

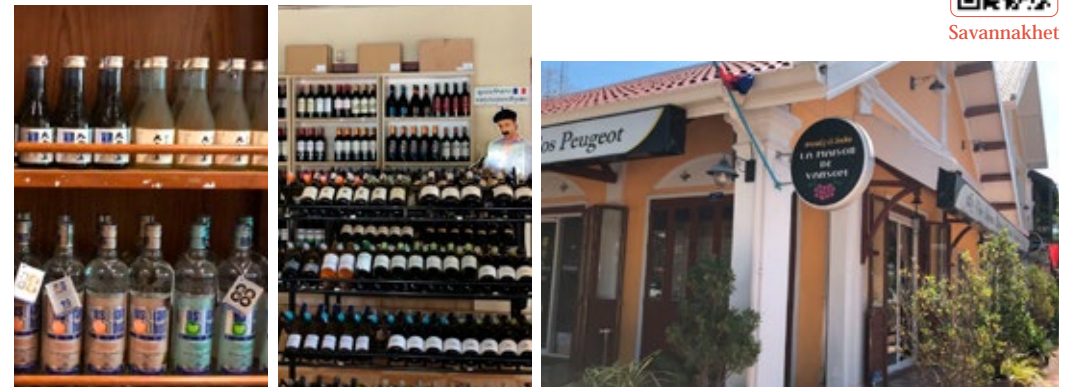
Shop mainly specialize in wine (bottles, bag-in-box and accessories)

ຮ້ານເຮົາມີຄວາມຊຽວຊານກ່ຽວກັບວາຍ (ວາຍເປັນແກ້ວ, ວາຍເປັນຖົງໃນກ່ອງ ແລະ ອຸປະກອນກ່ຽວກັບວາຍ)

Map



Savannakhet



Tel +856 30 9118 920 **Business hour** Open daily 09:00-18:00

20 Laos Samai Restaurant & Lounge



Restaurant



Recommended menu Salmon with lao samai fried rice and vegetables roll set

Japanese raw materials KOKUMOTSU SU FROM KANAGAWA, JAPAN

Laos Samai: your Vientiane gateway to global flavors. Savor Lao, Thai, European, Japanese, Chinese delights from morning coffee to moonlit cocktails. Lounge in vibrant vibes, fuel adventures, connect with the world – one delicious bite at a time.

ຮ້ານອາຫານ ລາວສະໄໝ Coffee, Restaurant & Lounge ພ້ອມບໍລິການທຸກທ່ານແລ້ວ ດ້ວຍອາຫານ ທີ່ຫຼາກຫຼາຍ ແບບປະສົມປະສານ ຈາກຫຼາຍ ຊັ້ນຊາດ ລາວ, ຍູຣົບ, ຍີ່ປຸ່ນ, ຈີນ, ໄທ ແລະ ເຄື່ອງດື່ມ ກາຟຟີ, ວາຍ, ຊາເກ ນຳເຂົ້າຈາກຕ່າງປະເທດ ບອກໄດ້ວ່າມາບອນດຽວແຕ່ເຂົ້າສອດແລງ ຄົບຈົບໃຊ້ງົບໜ້ອຍກະອິມໄດ້

Map



Tel +856 20 5655 3956 / +856 20 5462 4994 **Business hour** Open daily 08:00-24:00

22 Makoto Japanese store

Supermarket



Japanese raw materials Wholesaler and Retailer of Japanese products. We provide Japanese products only.

Makoto Store includes quality products imported from Japan. We sell a variety of consumables and accessories. Goods are available for delivery and can be ordered online or by phone.

ຮ້ານຄ້າມະໂກໂຕະ ລວມສິນຄ້າຄຸນນະພາບນຳເຂົ້າຈາກຍີ່ປຸ່ນ, ພວກເຮົາຂາຍເຄື່ອງບໍລິໂພກ ແລະ ອຸປະໂພກຫຼາກຫລາຍຊະນິດ. ມີສິນຄ້າພອມສິ່ງ ຫຼື ສາມາດສັ່ງຊື້ທາງອອນໄລນ໌ທີ່ເບີໂທລະສັບໄດ້ເລີຍ.

Map



Tel +856 20 2924 5666 **Business hour** Open daily 10:00-18:00

21 M Food and Hotpot

Restaurant



Recommended menu Happy Family Set **Japanese raw materials** WAGYU ROM IWATE, JAPAN

M Food and Hotpot: Feast without limits! <Endless variety: Premium meats, fresh seafood, offal galore, many types of meatballs (fresh & seasoned!), global pork parade... and more!> <Souper choices: Divide your pot, mix & match soups, spice it up or keep it mellow - your broth, your rules!> <Service with a sizzle: Heartfelt, fast, detail-obsessed. Tech-savvy ordering: click, wait, feast!>

ອາຫານຫລາກຫລາຍ ຊັ້ນລະດັບພິມຽມ ອາຫານທະເລ ເຄື່ອງໃນ ລູກຊີ້ນຫລາຍປະເພດ ລູກຊີ້ນສີດ ກ້ຽວສີດ ເສັ້ນໜີ້ຂອງຫລາຍປະເພດ ແລະອື່ນໆອີກຫລາຍ ນ້ຳຊຸບຫລາກຫລາຍໃຫ້ເລືອກ ແບ່ງສອງນ້ຳໄດ້ ບໍລິການດ້ວຍໃຈ ວ່ອງໄວ ໃສໃຈລາຍລະອຽດ ມີລະບົບການສັ່ງດ້ວຍໂຕເອງ (ຢາກສັ່ງຫຍັງກົດເອົາເອງເລີຍ ດຽວທາງເຮົາຈັດສົ່ງໃຫ້)

Map



Tel +856 20 7779 9777 **Business hour** Tuesday-Sunday 18:00-22:30 / Closed on Monday

23 Miyako Japanese Restaurant

Restaurant



Recommended menu GRILL A5 WAGYU **Japanese raw materials** A5 WAGYU FROM MIE, JAPAN

Miyako: Japan on your plate. Seasonal ingredients, crafted by a master chef, for an unforgettable taste of tradition.

ອາຫານແລະລົດຊາດຕົ້ນຕໍລ້ຽວແບບຍີ່ປຸ່ນແທ້ ຄັດສິນວັດຖຸດິບເປັນຢ່າງດີຕາມລະດູການ ປຸງແຕ່ງໂດຍເຊບ ທີ່ມີຊື່ສຽງຈາກປະເທດຍີ່ປຸ່ນ ມາພ້ອມເສັ້ນໃຫ້ທ່ານແບບມີຄວາມສຸກໃນການຮັບປະທານອາຫານທີ່ແສນພິເສດ.

Map



Tel +856 20 5556 5659 **Business hour** Open daily 17:00-22:00

ຮ້ານ ອາຫານ ມີຍາຊາກີ ເທບປັນຍາກີ 24 Miyazaki Teppanyaki Laos

Restaurant



Recommended menu SURF & TURF Lobster and beef steak ກຸ້ງມັງກອນ ແລະ ສະເຕັກຊິ້ນງົວແອງກັສ
Japanese raw materials KIKUMASAMUNE SAKE FROM HYOGO, JAPAN

Hungry for sizzling hot Japanese food cooked right before your eyes? Miyazaki is your place! Choose from delicious dishes, then watch the chefs show off their skills on the teppanyaki grill. Every bite is fresh and fiery - come get your taste buds dancing!

ຮ້ານອາຫານ ມີຍາຊາກີ ເທບປັນຍາກີ ສະໄຕຍີ່ປຸ່ນ ພວກເຮົາຍິນດີໃຫ້ບໍລິການເສີບອາຫານຮ້ອນໆຈາກເຕົາສູ້ລູກຄ້າ ດ້ວຍອາຫານຫຼາກຫຼາຍແມ່ນູທີ່ມີໃຫ້ເລືອກບໍ່ຊໍ້າກັນ ປຸງອາຫານໂດຍເຊບ Teppanyaki ເສີບໃຫ້ລູກຄ້າສິດໆ ໜ້າເຕົາ

Map



Tel +856 21 316 542 **Business hour** Open daily 10:00-21:30

ຮ້ານອາຫານຍີ່ປຸ່ນ ນາໂອກີ 26 Naoki Japanese Restaurant

Restaurant



Recommended menu NAOKI SALAD
Japanese raw materials HOTATE SASHIMI FROM HOKKAIDO, JAPAN

Hello, we are Naoki. The freshest and the top Japanese restaurant in Laos. Currently Naoki has 5 branches and 1 minimart in Lao PDR. ສະບາຍດີ ພວກເຮົາຄື ນາໂອກີ ສິດ ໃໝ່ ໃຫຍທຸກຄຳ ຮານອາຫານຍີ່ປຸ່ນອັນດັບຕົ້ນຂອງ ປະເທດລາວ ປັດຈຸບັນ ນາໂອກີມີ 5ສາຂາ ແລະ 1ມິນິມາກ ໃນ ສປປ ລາວ

Map



Namphu

Map



That Luang



Tel +856 30 4912 477 **Business hour** Open daily 11:00-14:00, 17:00-21:30

ຮ້ານອາຫານຍີ່ປຸ່ນ ໂມມິຈີ 25 Momiji Japanese Restaurant

Restaurant



Recommended menu Sushi Mori set, Salmon lover, UNAGI Sushi, Salmon Sashimi
Japanese raw materials DAIGINJO SAKE FROM KYOTO, JAPAN

At Momiji, we focus on the taste of the food, prompt and clean service, a comfortable atmosphere and reasonable prices.

ຮ້ານ Momiji ພວກເຮົາເນັ້ນການໃສ່ໃຈໃນຮິດດຊາດອາຫານ ລວມທັງການບໍລິການສຸພາບວອງໄວແລະຄວາມສະອາດ ບັນຍາກາດສະບາຍລາຄາເປັນກັນເອງ

Map



Tel +856 20 5611 1115 **Business hour** Open daily 11:00-14:00, 16:30-21:30

ຮ້ານອາຫານ ນິກຸໂອະ 27 Niku O yakiniku

Restaurant



Recommended menu Beef, Seafood **Japanese raw materials** OTOKOYAMA SAKE FROM HYOGO, JAPAN

Grill your cravings at Niku o Buffet! Feast on 100+ Japanese BBQ delights, smothered in delicious sauces, and satisfy your inner fire-eater.

Niku o ນິກຸ ໂອະ ບຸບເພີ່ອາຫານສະໄຕສຢີ່ປຸ່ນ, ເອົາໃຈຄົນມັກກິນບັງຢ່າງ ມີແມ່ນຫລາຍກວ່າ 100 ແມ່ນູທີ່ນຳທັບພ້ອມເສີບໃຫ້ທຸກທ່ານໄດ້ອິ່ມແຊບ

Map



Tel +856 30 9988 626 **Business hour** Open daily 16:30-22:00

28 Omakase M1



Japanese raw materials MEIJO JUNMAI SAKE FROM HYOGO, JAPAN

I have food ready for delivery as ordered by customers.

ຂ້ອຍມີອາຫານພ້ອມສົ່ງຕາມທີ່ລູກຄ້າສັ່ງ



Tel +856 20 9256 5595 **Business hour** Open daily 11:30-21:00

Map



*Under relocating

ໂອຊິເນ ວຽງຈັນ, ລາວ

30 Oshinei Vientiane, LAOS



Recommended menu SHABU and Buffet **Japanese raw materials** FRESH WASABI FROM TOKYO, JAPAN

Feeling chilly? Warm up with our hot & spicy shabu shabu buffet! Enjoy a 2-hour feast packed with 129 delicious dishes to explore. From savory broths to fresh ingredients, there's something for everyone! So grab your friends and family, and fill your bowls with happiness! Always served fresh, always satisfying. Don't miss out! Come warm up with us!

ບັນຍາກາດໜາວໆເຢັນໆມາແວ່ກິນບຸບຟຸ່ງຊາບູແຊບູໆແກ່ໜາວທີ່ຮ້ານເຮົາໄດ້ເດີ້ ຈັດໜັກຈັດເຕັມໃຫ້ທຸກທ່ານ ກັບບຸບຟຸ່ງ 2 ຊົ່ວໂມງເຕັມໆ ໝາກຫຼາຍເມນູໃຫ້ທຸກທ່ານໄດ້ເລືອກ 129 ເມນູ. ເສີບຄວາມສົດໃໝ່ໃຫ້ທຸກທ່ານສະເໝີ.

Map



Tel +856 21 454 565 / +856 20 5949 4465 (WhatsApp) **Business hour** Open daily 10:00-22:00 (Kitchen closed at 21:30)

ຮ້ານ ໂອຊາກາ

29 Osaka Fusion Buffet



Recommended menu SASHIMI, FOIE GRAS SUSHI, UNAGI SUSHI, SLICED HAMACHI, KIURA.

Japanese raw materials Wasabi, Kombu, Miso, Kamaboko, Tobiko, Greentea from Japan.

Fresh food with attention to the quality of raw materials and service.

ອາຫານແຊບ ສົດໃໝ່ ໃສ່ໃຈເລື່ອງຄຸນນະພາບຂອງວັດຖຸດິບ ແລະ ການບໍລິການ



Tel +856 20 5664 6946 **Business hour** Open daily 11:00-22:00 (Kitchen closed at 21:00)

Map



ພາກຊັນລາວ ຊຸບເປີມາເກັດ

31 Parkson Laos Supermarket



Japanese raw materials Retailer of Japanese products such as Curry, Shoyu and Sake.

We are a large supermarket in the center of Vientiane capital. We're exceptional in Premium Convenient and Modern.

ພວກເຮົາແມ່ນຫ້າງສັບພະສິນຄ້າທີ່ໃຫຍ່ ແລະ ຢູ່ໃຈກາງນະຄອນຫຼວງວຽງຈັນ. ພວກເຮົາມີຄວາມແຕກຕ່າງ ພຣີມຽມ ສະດວກ ແລະ ທັນສະໄໝ.

Map



Tel +856 21 261 688 **Business hour** Open daily 09:30-21:00

ປິ່ນໂຕກຽວພາຊາ
32 Phin Tokyo Plaza



Supermarket



Japanese raw materials Wholesale and retail of Japanese products. We provide Japanese products only

Missing Japan? Phin Tokyo Plaza brings it right here! Top-notch service meets amazing quality - find everything from yummy snacks to cool homeware, all straight from Japan. Visit one of their 4 Laos branches, or oversea stores in Cambodia, Moldova, or even Georgia!

ປິ່ນໂຕກຽວພາຊານຳສິ່ງການບໍລິການທີ່ດີ ດ້ວຍສິນຄ້າທີ່ມີຄຸນນະພາບ ພວກເຮົາເປັນຮ້ານຄ້າ ຂາຍສິ່ງ ແລະ ຂາຍຍອຍສິນຄ້ານຳເຂົ້າຈາກປະເທດຍີ່ປຸ່ນ. ປັດຈຸບັນມີ 4ສາຂາໃນລາວ ແລະ ຍັງໄດ້ດຳເນີນທຸລະກິດໃນຕ່າງປະເທດອີກດ້ວຍ ເຊັ່ນ: ກຳປູເຈຍ, ໂມດູວາ, ຈໍເຈຍ.

Map



Tel +856 30 4581 709 Business hour Open daily 09:00-20:00

ຮ້ານອາຫານຍີ່ປຸ່ນຄູ່
33 Qoo Japanese Restaurant



Restaurant



Recommended menu SALMON FLAKE SET

Japanese raw materials SANMA FISH FROM IWATE, JAPAN. All the seasoning use Japanese products only.

We offer a wide range of menu, from reasonably priced izakaya menu to sushi, sashimi, and Hiroshima-style okonomiyaki. The popular tonkotsu ramen is made from a soup made by simmering pork bones for 12 hours, and the Japanese chef's handmade noodles, all made in-house.

ພວກເຮົາຈັດກຽມເມນູທີ່ໄດ້ຮັບຄວາມນິຍົມຈາກຮ້ານອີຊະກະຢະທີ່ມີລາຄາສົມເຫດສົມຜົນ ເຊັ່ນ: ຊຸຊິ, ຊະຊິມິ, ໂອໂຕໂນມິຢະກິສະຕາຍຣີໂລຊິມະ ແລະ ອື່ນໆ. ນອກຈາກນີ້ ຍັງມີລາເມັງ Tonkotsu ທີ່ໃຊ້ເວລາຕົ້ມນຳກະດູກໝູດົນເຖິງ 12 ຊົ່ວໂມງ ແລະ ພໍຄົວຄົນຍີ່ປຸ່ນໄດ້ບິບເສັ້ນລາເມັງດ້ວຍມືເອງຕົວເອງ.ທຸກຢ່າງທີ່ກ່າວມານີ້ໄດ້ຖືກກະກຽມຢູ່ໃນຮ້ານຂອງພວກເຮົາເອງ.

Map



Tel +856 30 5279 577 Business hour Monday-Saturday 11:30-14:00, 17:00-22:30 / Sunday closed

ຄວິນຟູັດ ໝາກໄມ້ນຳເຂົ້າຈາກຕ່າງປະເທດ
34 QueenFruit

Other retail



Japanese raw materials AOMORI APPLE FROM AOMORI, JAPAN

Taste the world, nourish your soul. Queen Foods brings premium, imported fruits to Vientiane. Deliciousness with every bite, health in every choice. Two locations, endless happiness.

ຄວິນຟູັດ ໝາກໄມ້ສົດໃຫມ່ ຫວ່າງໄຍແລະໃສ່ໃຈສຸຂະພາບຂອງທ່ານ. ພວກເຮົາຂາຍໝາກໄມ້ນຳເຂົ້າຈາກຕ່າງປະເທດ ປັດຈຸບັນມີ 2ສາຂາ ໃນນະຄອນຫຼວງວຽງຈັນ.

Map



Tel +856 20 5589 9495 Business hour Open daily 09:30-20:30

ຮາຄູເອັນ ປິ່ງຍ້າງພຣີມຽມ ຢາກິນິກູ
35 Rakuen Premium Yakiniku

Restaurant



Recommended menu YAKINIKU SET

Japanese raw materials A5 STRIPLOIN JAPANESE WAGYU, JAPAN

Don't miss our premium line of Yakiniku Japanese barbecue! Try our unique style and taste. Rakuen Heaven for meat lovers. Located behind the 1st floor of Parkson supermarket.

ສາຍເນື້ອແບບພຣີມຽມ ທີ່ບໍ່ຄວນພາດ ມາລອງສຳພັດກັບເນື້ອທີ່ນຸ່ມ ແລະ ລົດຊາດທີ່ລົງຕົວໄດ້ແລ້ວ ຮາຄູເອັນ ສະຫວັນຂອງຄົນມັກຊິ້ນ ຕັ້ງຢູ່ສູນການຄ້າ ພາກຊັນ ຊັ້ນ1 ໂຊນດ່ານຫຼັງພາກຊັນ

Map



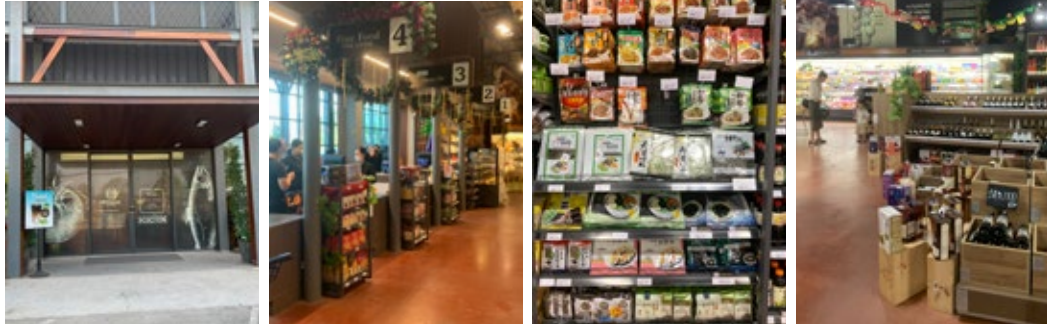
Tel +856 20 5994 8589 / 020 5540 5522 Business hour Open daily 10:00-22:00

36 Rimping Supermarket Laos



Japanese raw materials Retailer of Thai, Lao, Japanese products etc. We sell goods imported from abroad, including Japanese product.

Rimping Supermarket - the Market of Choice
Find premium products and quality products only at Rimping Supermarket.
ຄິດຫາສິນຄ້າລະດັບພຣີມຽມ ແລະ ສິນຄ້າຄຸນນະພາບແມ່ນໃຫ້ມາທີ່ Rimping Supermarketເທົ່ານັ້ນ.



Tel +856 20 5675 2846 **Business hour** Open daily 08:00-21:00

Map



Viewmall

Map



Phonsinuan

38 Salongxay Liquor House

Mini-market, Wholesale, Retailer and Restaurant

Japanese raw materials SAKE, SHOCHU, UMESYU, WHISKY, BEER, SOFT DRINK, SNACKS. SAKE FROM YAMAGUCHI, HIROSHIMA, HYOGO, YAKAYAMA, NAGANO, FUKUI(JAPAN).

Japanese liquor sales, famous Japanese liquors, plum wine, shochu, whiskey, beer.
Other snacks, appetizers, seasonings, rice.
ຂາຍຫຼ້າທີ່ມີຊື່ສຽງຂອງຍີ່ປຸ່ນ, ວາຍໝາກບວຍ, ໄຂຈູ, ວິສກີ, ເບຍ, ນອກຈາກນີ້ຍັງຂາຍເຂົ້າໝີ່ຍີ່ປຸ່ນ ແລະ ອາຫານວ່າງຕ່າງໆ, ເຄື່ອງປຸງອາຫານຍີ່ປຸ່ນ ແລະ ຍິ່ງຂາຍເຂົ້າຍີ່ປຸ່ນນຳອີກ.

Map



Tel +856 21 254 490 / 020 5557 7645 / 020 2889 5151 **Business hour** Open daily 09:00-23:00

37 Sakura shop

Retailer



Japanese raw materials Retailer of Japanese products. We provide Japanese products only.

Sakura Shop sells products imported from Japan. There are a variety of cosmetics and accessories for you to choose.

ຮ້ານ ຊາກູລະ ຂາຍຜະລິດຕະພັນສິນຄ້ານຳເຂົ້າຈາກຍີ່ປຸ່ນໂດຍແທ້. ມີເຄື່ອງສຳອາງ ແລະ ເຄື່ອງໄຂຫຼາກຫຼາຍຢ່າງໃຫ້ທ່ານໄດ້ເລືອກຊື້.

Map



Tel +856 20 5517-8900 / 020 5554 9544 **Business hour** Mon-Sat 09:00-20:00 / Closed on Sunday

39 Shinjuku Sushi Phontong

Restaurant



Recommended menu SASHIMI SET **Japanese raw materials** OZEKI SAKE FROM HYOGO, JAPAN

Delicious, clean, safe and sincerity to the customer. ແຊບ ສະອາດ ປອດໄພ ໃສ່ໃຈລູກຄ້າ

Map



Tel +856 20 5568 6166 **Business hour** Open daily 10:30-14:00, 16:30-22:00

40 Sihom Cafe 口福 KOFUKU Japanese restaurant



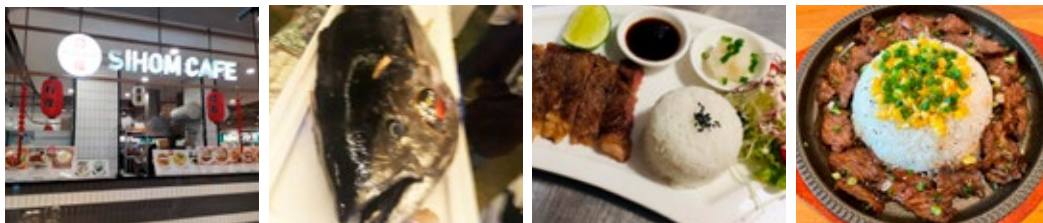
Recommended menu Pepper beef, Wagyu steak, Katsudon

Japanese raw materials WAGYU BEEF FROM KAGOSHIMA AND HON MAGURO TUNA FISH FROM OSAKA, JAPAN

Our goal is to bring smiles with our tasty Japanese food. 口福 (KOFUKU) in Japanese and Chinese, symbolizes the joy of delicious flavors that bring happiness. It's the embodiment of being fortunate to relish tasty food. We are committed to using fresh, top-notch ingredients for an authentic culinary journey. Join us and enjoy our handmade Japanese delights!

ເປົ້າໝາຍຂອງພວກເຮົາແມ່ນການນໍາສົ່ງຮອຍຍິ້ມດ້ວຍອາຫານຍີ່ປຸ່ນທີ່ແຊບ. ຄໍາວ່າ "口福 KOFUKU" ໃນພາສາຍີ່ປຸ່ນ ແລະ ພາສາຈີນແມ່ນສັນຍາລັກຄວາມສຸກຈາກຄວາມແຊບສູງຄວາມສຸກໃຈ. ມັນເປັນສູນລວມຂອງຄວາມໂຊກດີທີ່ໄດ້ຊົມອາຫານທີ່ແຊບ. ພວກເຮົາມຸ່ງໝັ້ນທີ່ຈະໃຊ້ອາຫານທີ່ສົດໆ ໃໝ່ໆ ເຂົ້າໃນການປຸງແຕ່ງອາຫານ. ເຊິ່ງທ່ານມາຮວມ ແລະ ມາເພີດເພີນກັບລົດຊາດອາຫານຍີ່ປຸ່ນທີ່ເຮັດດ້ວຍມືຂອງພວກເຮົາ.

Map



Tel +856 20 9746 3011 **Business hour** Open daily 10:30-20:00

ຮ້ານ ຊູຊິ ບ່ອກ 41 Sushi Box



Recommended menu Mix Sashimi Boat and Premium Sushi

Japanese raw materials MARUKOME DASHI FROM NAGANO, JAPAN

Sushi Box is a Japanese food restaurant that uses almost 90% of the raw materials imported from Japan via Thailand. Also we use fresh salmon from Norway.

ຮ້ານ ຊູຊິ ບ່ອກ ເປັນ ຮ້ານ ອາຫານ ຍີ່ປຸ່ນ ທີ່ນໍາໃຊ້ ວັດຖຸດິບ ນໍາເຂົ້າ ເກືອບ 90% ຈາກ ຍີ່ປຸ່ນ ຜ່ານປະເທດໄທ, ສວນ ປາ ແມ່ນເຮົາໃຊ້ ປາແຊວມອນສິດ ຈາກ ປະເທດນໍເວ.

Map



Vientiane

Map



Luang Prabang



Tel +856 20 9979 8888 (VTE) / +856 20 8888 0808 (LPB) **Business hour** Daily 12:00-22:00 (VTE) / Daily 10:00-22:00 (LPB)

ຮ້ານອາຫານຍີ່ປຸ່ນ ຊູຊິໂຣະ 42 Sushiro Japanese Fusion Cuisine



Recommended menu Foie Gras sushi **Japanese raw materials** HOTATE FROM HOKKAIDO, JAPAN

Tired of the same old sushi? Sushiro's your twist! We blend fresh, top-quality Japanese ingredients with Lao flavors for a modern bite. Think melt-in-your-mouth sashimi, sizzling teppanyaki, and sushi bursting with unexpected tastes. Come experience Japan and Laos on one plate at Sushiro!

"Sushiro" ເປັນຮ້ານອາຫານຍີ່ປຸ່ນແບບ Fusion Cuisine ນໍາໃຊ້ວັດຖຸດິບທີ່ໄດ້ມາດຕະຖານຄຸນນະພາບຈາກປະເທດຍີ່ປຸ່ນໂດຍກົງ ນໍາມາປຸງແຕ່ງເປັນເມນູອາຫານ ແລະ ຣິດຊາດໃຫ້ເຂົ້າກັບການບໍລິໂພກຂອງຄົນລາວເຮົາ. ນອກຈາກນີ້ໜ້າຕາອາຫານ ແລະ ການຈັດເສີບຍັງມີການປະສົມປະສານລະຫວ່າງຕົ້ນຕໍລັບຂອງຍີ່ປຸ່ນແທກັບຍຸກສະໄໝໃໝ່ເພື່ອໃຫ້ສອດຄ່ອງກັບ Concept ຂອງຮ້ານຄື "Sushiro Japanese Fusion Cuisine"

Map



Branch 1

Map



Branch 2



Tel +856 20 5592 3555 (Branch1) +856 20 5661 1156 (Branch2) **Business hour** Open Daily 10:30-22:00

ທາໂກຍາກິ ສີຫອມ 43 Takoyaki sihom



Recommended menu Octopus Takoyaki

Japanese raw materials KEWPIE MAYONNAISE FROM TOKYO, JAPAN

Takoyaki is wrapped in soft octopus. There are 3 dishes to choose from. Octopus, hotdog and cheese. Made fresh everyday!

ທາໂກຍາກິ ກອບນອກນຸ້ມໃນ ປາມືກເນັ້ນໆ ມີ 3 ໄລ່ໂຫເລືອກ ໄລ່ປາມືກ ໄລ່ຮອນດອ່ກຊິລໄລ່ຊິລ ແຊບ ສິດໃຫມ່ທຸກມື້

Map



Sihom

Map



Phonethun



Tel +856 20 5956 6144 **Business hour** Open daily 17:30-22:30 (Sihom branch) 10:30-20:30 (Phonethun branch)

ຮ້ານອາຫານ ເຕຣູ
44 Teru- ເຕຣູ - 輝 Yakiniku



Recommended menu Ramen **Japanese raw materials** BLACK BREED WAGYU FROM KYUSHU, JAPAN

Teru Yakiniku, premium taste with A5 Wagyu imported from Japan, Australia, and Thailand, is ready for you to come and try it yourself.

ເຕຣູ ຢາກິນິກູ ພ້ອມເສີບໃຫ້ທ່ານໄດ້ມາສຳຜັດຄວາມພຽ້ນຮຸ້ນກັບຊີ້ນວາກິວ A5 ນຳເຂົ້າຈາກປະເທດຍີ່ປຸ່ນ, ອົດສະຕາລີ ແລະ ໄທ ຢັ້ງໃນເຕົາຖ່ານແບບດັ່ງເດີມ ໃຫ້ທ່ານໄດ້ມາພິສູດເອກະລັກຄວາມແຊບແບບຕົ້ນຕຳລັບໄດ້ດ້ວຍຕົນເອງແລ້ວນີ້.

Map



Tel • WhatsApp +856 20 22 116 643 **Business hour** Open daily 11:00-14:30, 17:00-21:00

ຮ້ານ ໂຕກຽວຊູຊີ
45 Tokyo sushi Laos



Recommended menu OTORO SUSHI

Japanese raw materials Kanpachi fish, Shima Aji fish, Madai fish from Ehime and Maguro fish from Nagasaki, Kinmedai fish from Chiba, JAPAN

Premium fresh raw materials are imported from Japan.

ວັດຖຸດິບສິດພຽ້ນຮຸ້ນນຳເຂົ້າຈາກຍີ່ປຸ່ນ

Map



Tel +856 20 5211 1158 / +856 20 2232 2356 (Whatsapp) **Business hour** Open daily 11:00-14:00, 17:00-22:00

ໂຕກຽວ ທາໂກະຍາກິ
46 Tokyo Takoyaki



Recommended menu SAUCE MAYONNEISE TAKOYAKI

Japanese raw materials TAKOYAKI SAUCE FROM JAPAN

100% Japanese taste. Enjoy authentic Japanese TAKOYAKI. You can also order from Foodpanda. Don't miss it !!!!!

ລົດຊາດຍີ່ປຸ່ນ 100% ຜະລິດຈາກຍີ່ປຸ່ນ ເພີດເພີນໄປກັບ TAKOYAKI ຍີ່ປຸ່ນແທ້ ທ່ານສາມາດສັ່ງຈາກ Foodpanda ໄດ້ ຢ່າພາດ!!!!!!

Map



Tel Only facebook page and Messenger : Tokyo Takoyaki **Business hour** Open daily 10:00-17:00

ຮ້ານ ວາຍ ວັນສິມ
47 Vansom Wine Shop



Recommended products Wine and products from France.

Japanese raw materials We sell goods imported from abroad, including SAKE AND RICE FROM NAGANO, JAPAN

Shop mainly specialize in wine (bottles, bag-in-box and accessories) and also foodstuff from Rungis Market in France

ຮ້ານວາຍວັນສິມ ມີຄວາມຊຸ່ວຮຸ່ນກ່ຽວກັບວາຍ (ວາຍເປັນແກ້ວ, ວາຍເປັນຖົງໃນກ່ອງ ແລະ ອຸປະກອນກ່ຽວກັບວາຍ) ແລະຍັງມີອາຫານຈາກຕະຫຼາດລັງກິສໃນປະເທດຝຣັ່ງອີກດ້ວຍ.

Map



Tel +856 21 214 609 **Business hour** Mon-Fri 08:00-19:00, Sat 08:30-18:00, Sun 09:00-17:00

ຮ້ານອາຫານ ວາລາວ

48 WALAO Ramen Restaurant in Vientiane

Restaurant



Recommended menu TONKATSU RAMEN

Japanese raw materials KIKKOMAN SHOYU FROM CHIBA, JAPAN

Dive into WALAO Ramen. We have original soup and traditional noodles. Let's Come satisfy your ramen dreams!

ຂໍເຊີນຫມູ່ເພື່ອນ ມາຊົມ ລາເມັງ ແລະ ອາຫານຍີ່ປຸ່ນ ພວກເຮົາມີເສັ້ນຮາເມັງລົດຊາດຕົ້ນສະບັບທີ່ພ້ອມເສີບໃຫ້ລູກຄ້າໄດ້ສຳພັດ.

Map



Tel +856 21 255 450 **Business hour** Mon-Sat 11:30-14:00, 18:00-22:30 / Closed on Sunday

ຢາກູ້ຊ້າ ໂອອິຊິ ພິມ໌ຽມ

49 Yakuza Oishi Premium



Restaurant



Recommended menu SASHIMI SALMON

Japanese raw materials KIREI UMESHU+COLLAGEN FROM KYOTO, JAPAN

Deliciously delicious. Yakuza Oishi Premium has buffet type and order type (Pay according in the menu's price)

ແຊບແບບຈຸໃຈ ທາງຮ້ານມີທັງບຸບຜັດ ແລະ ລາຄາ (ຕາມສິ່ງໃນເມນູ)

Map



Tel +856 20 2242 2939 / 020 5423 2949 **Business hour** Open daily 11:00-22:00 (Kitchen closed at 21:30)

ຮ້ານອາຫານຍີ່ປຸ່ນ ໂຢໂກຮາມາ

50 Yokohama Japanese restaurant



Restaurant



Recommended menu Special Sashimi Rice Bowl

Japanese raw materials Suntory old whisky from Yamazaki, Japan

Work blues got you down? Escape to Yokohama! Savor a mini feast of creamy Japanese curry and crispy katsudon, washing away stress with every bite. Garlicky squid in a symphony of dressings adds a fiery kick. Unwind, refuel, and conquer your week ahead.

ຜ່ອນຄາຍຄວາມຕຶງຄຽດຈາກວຽກງານພາຍໃນອາທິດທີ່ຮ້ານອາຫານຍີ່ປຸ່ນໂຢໂກຮາມາດ້ວຍ ແກງກະລີ ແລະ ກາຊິດິງ. ແກງກະລີຍີ່ປຸ່ນລົດຊາດອອນໆ ແລະ ປາມິກກະທຽມທີ່ແຊບ ພ້ອມດ້ວຍເຄື່ອງດຶກແຕ່ງທີ່ຫຼາກຫຼາຍ.

Map



Tel +856 20 5583 8226 **Business hour** Tuesday-Sunday 11:00-14:00, 17:30-21:00 / Monday closed

ໂຢໂລໂກບິ

51 YOROKOBI



Restaurant



Recommended menu WAGYU TATAKI

Japanese raw materials UNI FROM JAPAN

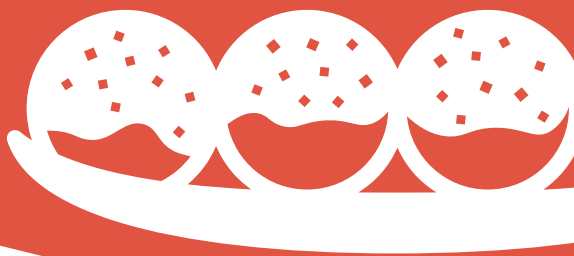
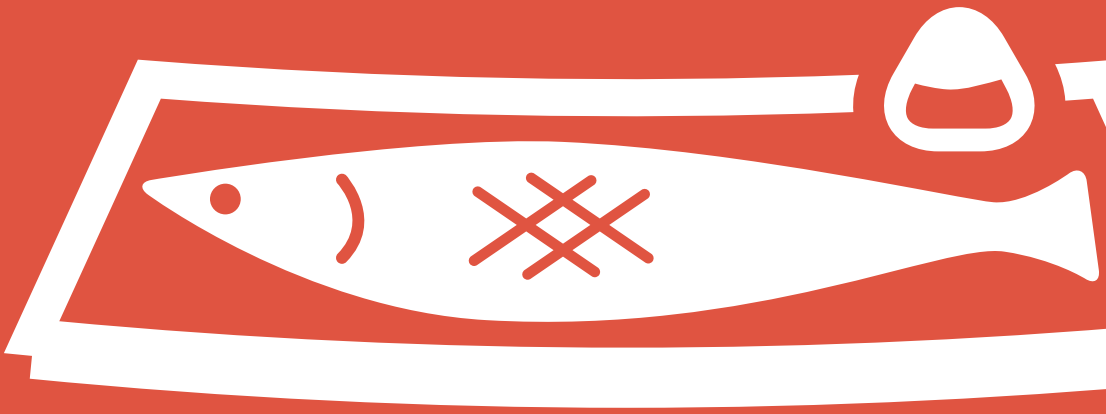
We fly in fresh, top-notch ingredients straight from Japan - the good stuff you can't find anywhere else. Dive into melt-in-your-mouth sashimi, and treat yourself to authentic flavors that'll transport your taste buds. Come experience Yorokobi, where Japanese goodness meets Laotian hospitality!

ບໍລິການດ້ວຍໃຈ ວັດຖຸດິບຄຸນນະພາບສົດໃໝຂຶ້ນເລີດ ນຳເຂົ້າຈາກຍີ່ປຸ່ນທີ່ຫາກິນຍາກ ໂຢໂຮໂກບິ ນຳມາໃຫ້ທ່ານລົ້ມລອງ

Map



Tel +852 20 5632 4594 **Business hour** Open daily 10:30-14:00, 17:00-22:00



JETRO Vientiane

4th Fl., Vieng Vang Tower, Boulichan Rd.,
Dongpalan Thong Village, Sisattanak District,
Vientiane, Lao P.D.R.

<http://www.jetro.go.jp> E-mail: LVI@jetro.go.jp
Tel: 856-21-454-774 or 021-264-173

Photographs are provided by each restaurants and stores.
Designed and edited by Hello Laos Sole Co., Ltd.
Copyright © 2024 JETRO. All rights reserved.

