

COMPANY DIRECTORY



METHODOLOGY



Innovation Hub – small initial team focused on scouting for new technology and trends



Innovation Lab – more established team running in-market innovation activities like accelerators and PoC projects



R&D Centre – highly-established in-market presence with closer ties to European industry and universities



CVC / Innovation – investing into European startups and technology developers

About the Companies in this Directory

Japanese companies were interviewed by JETRO and Intralink to create this report – and companies that deemed themselves to have a specific ‘innovation focused team’ with an active focus on Europe have been subsequently included in the following directory.

These ‘innovation focused teams’ almost always have a physical presence in the European market to help perform or support innovation-related activities including, but not limited to: technology scouting, trend research, open innovation projects, startup investments, and M&A.

For the purpose of this directory, companies belonging to the Forbes Global 2000 and Fortune Global 500 lists have been prioritised – but other companies demonstrating relevant innovation activity have also been considered. Companies might have more than one office in the directory to address different areas of operations (e.g. an innovation hub and a CVC).

Companies with a mere sales or production presence in Europe have not been included in this report – but have been interviewed to get a better understanding of their future innovation plans and interest areas, and to confirm their suitability for this directory.

Copyright & Disclaimer

The information contained herein has been obtained from sources believed to be reliable but is not guaranteed as to its accuracy or completeness. An effort has been made to go beyond simple data collection in this report: responses have been interpreted to elucidate the underlying processes, motives and relationships involved in the dynamics of the situations under investigation.

All references to factual data and properties should be recognised as respondents’ perceptions of reality unless otherwise stated. This report is not intended for, and should not be used as, an investment recommendation.

All information and data gathered for this project constitutes the work product of Intralink Limited, for which Intralink retains and reserves all proprietary rights. This document has been prepared for the exclusive use of JETRO and will not be copied or distributed to any third party without the express consent of Intralink Limited.

ENERGY & INFRASTRUCTURE

Since Japan announced its goal of achieving net carbon neutrality by 2050, energy has become a key focus of the country's innovation efforts. Known for its world-class infrastructure – from bullet trains to high-quality buildings – Japan has long set the standard in this field. Now, its leading multinational companies are seeking next-generation solutions to address emerging challenges, such as population decline in rural areas, or adapting to new international climate standards.



Innovation Hub – small team focused on tech/trend scouting



Innovation Lab – established team doing in-market innovation



R&D Centre – highly-established presence with closer ties to industry



CVC / Innovation – investing in startups

Chubu Electric Power Co.,Inc.

<https://www.chuden.co.jp/english/globalbusiness/>



AI & Data, Energy & Climate tech, Smart City & Real Estate

Chubu Electric Power London office works with our headquarters in Japan to explore innovation and partnership opportunities in the energy, climate and decarbonisation sectors in Europe. We have invested in several energy-related companies and projects across Europe, as well as in energy and climate tech funds.



Innovation Hub

210 High Holborn,
London, WC1V 7EP

Toshihide Serizawa

General Manager London Office



Daikin Europe N.V.

https://www.daikin.eu/en_us/customers.html



AI & Data, Energy & Climate Tech, Smart City & Real Estate, Advanced Technology Related to Heating, Ventilation, and Air Conditioning

Looking ahead 5 to 10 years, we will investigate ideas and develop technologies that can contribute to achieving carbon neutrality in our business area across Europe.

We will explore collaborations with European universities and academic partners.

In addition, we will cooperate closely with Daikin Japan, and act as a bridge between them and the European academic community to contribute to solving technical issues across Daikin.



Innovation Hub

Technologiepark –
Zwijnaarde 116, 9052,
Ghent, Belgium

Ryota Takechi

General Manager, EMEA Development Center



ENEOS Europe

<https://eneoseurope.com/>



Chemicals & Materials, Energy & Climate tech, Transportation & Mobility

ENEOS Europe has business development function which focuses on decarbonisation and circular economy. ENEOS is an oil company, so is interested in decarbonised fuels like Sustainable Aviation Fuels (SAFs) and e-fuels.

ENEOS Europe contacts startups, and then, shares the information with ENEOS HQ in Japan for potential further collaboration.



Innovation Hub

8th Floor, Muro, 2 India
Street, London, EC3N 2AF

Shunsuke Naito

Manager, Business Development



Idemitsu Innovation Europe AG

www.idemitsu.ch



Agritech & Foodtech, Biotechnology, Chemicals & Materials, Energy & Climate tech, Space & Satellite, Microelectronics & Semiconductor

Idemitsu Innovation Europe is a CVC involved in the investment into, and collaboration with, European startups.

Our responsibility covers other areas such as incubation, new business development, and academia collaboration.



CVC / Investment

Mattenstrasse 22
Postfach43 CH-4005 Basel
Switzerland

Yuichi Nishimae

GM of Incubation Unit



Mitsubishi Heavy Industries EMEA Ltd<https://www.mhi.com/>**Energy & Climate tech, AI & Data, Advanced Manufacturing, Chemicals & Materials, Quantum Computing, Smart City & Real Estate, Space & Satellite, Transportation & Mobility**

Mitsubishi Heavy Industries EMEA, Ltd. (MHI-EMEA) is a group company of Mitsubishi Heavy Industries, Ltd. (MHI) located in London, UK. MHI's products include aerospace components, air conditioners, aircraft, automotive components, forklift trucks, hydraulic equipment, machine tools, power generation equipment, ships and space launch vehicles. The Global R&I team is currently focused on technology scouting for new businesses and solutions, and searching for investment opportunities.

**Innovation Hub**

Building 11, Chiswick Park,
566 Chiswick High Road,
London, W4 5YA, UK

Hisaki Yamauchi

General Manager, Global Research
and Innovation

**Osaka Gas UK, Ltd**<https://osakagas.co.uk/>**Energy & Climate tech**

Osaka Gas UK is 100% subsidiary of Osaka Gas Co., Ltd. which is the second largest gas company in Japan. Osaka Gas is committed to achieving carbon neutrality by 2050.

To this end, we are focusing on businesses and technologies that contribute to decarbonisation, and in particular, we explore opportunities related to e-methane (also called synthetic gas or e-NG) that we believe the key to achieving decarbonisation in our core business.

**CVC / Investment**

1st Floor, Carrington House,
126-130 Regent Street, W1B
5SE London, UK

Shinsuke Inami

General Manager, Business
Development and Decarbonisation

**Tokyo Electric Power Company Holdings, Inc**<https://www.tepco.co.jp/en>**Energy & Climate tech, Offshore Wind Power, Interconnector**

Tokyo Electric Power Company Holdings, Inc., also known as TEPCO, is one of the largest and leading electric utility companies in Japan. Our London office is leading innovation activities such as technology research in the European market.

**Innovation Hub**

4th Floor, Marlborough
Court, 14-18 Holborn,
London, EC1N 2LE, UK

Ryosuke Sugimoto

Manager

**NIPPON SHOKUBAI EUROPE N.V.**<https://www.shokubai.co.jp/en/>**Chemicals & Materials, Energy & Climate tech**

NIPPON SHOKUBAI opened 'Innovation Center for Sustainable Solutions' in Brussels in April 2024. The Center plays a role of liaison between R&D of its mother company and European market from the viewpoint of environmental contributions. We are promoting NIPPON SHOKUBAI's innovation through communications with European customers, opinion leaders, research entities as well as startups. Hydrogen, Energy storage, Decarbonization, Mitigation of chemical pollutants on air, water and soil are fields the center is mainly looking at. In addition to customer developments of our R&D products, we are eager to find new opportunities for Innovation through partnerships in Europe.

**Innovation Hub**

Herrman-Debrouxlaan 54,
1160 Oudergem (Brussels),
Belgium

Yoichi Arimoto

General Manager

**Shimizu Corporation**<https://www.shimzu.co.jp/novare/index.html>**AI & Data, Energy & Climate tech, Smart City & Real Estate, Transportation & Mobility**

As one of Shimizu's global innovation hubs, the London office is currently responsible for 1) the implementation of the TiB Catapult Global City-tech Bridge (a TOKYO-UK innovation cluster creation programme for over 30 city-tech startups) funded by Tokyo Metropolitan Government between 2024 and 2027, in partnership with the Connected Places Catapult (CPC), 2) PoCs in construction tech, property tech, city tech and 3) developing, 3) Involving in the EIT Innovation programmes with JETRO (2025-), 4) Participation to Innovation/Pitch events as a speaker and business development

**Innovation Lab**

91 Wimpole Street,
Marylebone, London,
W1G 0EF

Yuri Akiyama

Corporate Planning & Innovation Manager

**Tokyo Gas United Kingdom Ltd.**<https://www.tokyo-gas.co.jp>**AI & Data, Energy & Climate tech**

Tokyo Gas United Kingdom Ltd is a fully owned subsidiary of Tokyo Gas Group, incorporated in January 2021 with the registered office in London.

Our main activities include business developments and research on energy trading in the European market. Partnership with Octopus Energy Group is one of our major businesses.

**Innovation Hub**

85 Gresham Street,
London,
EC2N 7NQ

Koji Yoshizaki

Managing Director and CEO



INDUSTRIAL & MANUFACTURING

Japan is widely recognised as a manufacturing powerhouse, dominating global exports in automobiles, consumer electronics, and chemicals – with the country holding a remarkable 60% market share in 220 manufacturing product categories. Beyond traditional manufacturing, Japanese companies are now focusing on enhancing production efficiency and creating new value through digitalisation and decarbonisation, further driving growth in the industry.



Innovation Hub – small team focused on tech/trend scouting



Innovation Lab – established team doing in-market innovation



R&D Centre – highly-established presence with closer ties to industry



CVC / Innovation – investing in startups

IHI Europe Ltd

https://www.ihieuro.co.uk/r_and_d/index.html



Advanced Manufacturing, Energy & Climate tech

The IHI Additive Lab based in Cambridge is focusing on high temperature materials development and additive manufacturing for a range of applications.

Some of the research activities include the commission of research with UK/European research institutes, and collaboration with IHI group companies in the field of 'energy industry'.



R&D Centre

Granta Centre, Granta Park, Cambridgeshire, CB21 6GP, UK

Noriko Read

Head of Strategic Partnership Department



JX Advanced Metals Corporation

<https://www.jx-nmm.com/english/>



Advanced Manufacturing, Energy & Climate tech, Quantum Computing, Microelectronics & Semiconductor, Space & Satellite, AI & Data, Photonics

We are non-ferrous metal company, basically strong at semiconductor metal materials or ICT metal materials used for electronic applications such as smart phones, PCs, and servers. Our teams in Frankfurt are looking for new business or technology for our next business in Europe.

For the next generation, we focus on 5 areas: next generation semiconductors, photonics, environmental catalysts, heat management materials, and health care.

Our main activity is to attend start-up events, conferences, exhibitions, research institutes to find good collaborators, or catch-up on European political or industrial trends.



Innovation Hub

Kaiserstraße 7, 60311 Frankfurt am Main, Germany

Takenori Kumagai

Senior Manager



KUBOTA HOLDINGS EUROPE B.V.

<https://www.kubota.com/innovation/open-innovation/>



Agritech & Foodtech, AI & Data

Kubota Corporation has innovation centers in Japan, America and Europe. The Innovation Center Europe is based in the Netherlands and is responsible for creating new business by conducting different kinds of partnerships – such as PoCs, MVPs and minority investments with startups located in Europe.



Innovation Lab

Hoofdweg 1278, 2153LR, Nieuw-Vennep, the Netherlands

Peter van de Vlugt

General Manager of Innovation Center Europe



Mitsubishi Chemical Europe

<https://eu.mitsubishi-chemical.com/>



Advanced Manufacturing, Chemicals & Materials, Energy & Climate tech, Microelectronics & Semiconductor, Biotechnology, Agritech & Foodtech, AI & Data, Healthcare & Medical, Quantum Computing

We have a dedicated venture associate for the European region located in Düsseldorf. He belongs to Mitsubishi Chemical Group's CVC arm called Diamond Edge Ventures – which is incorporated in the US.



CVC / Investment

Schiessstraße 47 40549 Düsseldorf, Germany

Stefan Schnippering

Venture Associate



Mitsubishi Electric Europe B.V.<https://emea.mitsubishielectric.com/en/index.html>

Advanced Manufacturing, Agritech & Foodtech, AI & Data, Energy & Climate tech, Quantum Computing, Microelectronics & Semiconductor, Smart City & Real Estate, Space & Satellite, Transportation & Mobility

Mitsubishi Electric Europe B.V. is a subsidiary of Mitsubishi Electric Corporation in Europe. We explore new business by combining our own technologies and third-party's technologies from practical application level to deep technological level.

We have technology-oriented, Mitsubishi Electric R&D Centre Europe located in Rennes, France and in Livingston, UK. Also, we have Business Unit development centres located in Ratingen, Germany and Milan, Italy (factory automation), and in Paris, France (HVAC and heatpump technologies).

**Innovation Hub**

Mitsubishi-Electric-Platz 1,
40882, Ratingen,
Germany

Yohei Okato

Division Manager of Research and
Innovation Business Planning

**Mitsui Chemicals Europe GmbH**<https://eu.mitsuichechemicals.com/>

Energy & Climate tech, Advanced Manufacturing, Biotechnology, Chemicals & Materials, Healthcare & Medical, Microelectronics & Semiconductor, Quantum Computing, Transportation & Mobility

Our office in Europe participates in EU fund projects as well as attending startups networking events and relevant seminars, expos, and conferences.

Examples of our activities include plastics recycling technology collaboration, soft robotics project collaboration, and hydrogen related collaboration with institutes.

**Innovation Hub**

Helmholtzstrasse 19,
Dusseldorf 40215,
Germany

Hirokazu Tanaka

Senior Technical Expert

**NGK Europe GmbH**<https://www.ngk-e.de/>

Energy & Climate tech, H2-Economy, IoT, Microelectronics & Semiconductors, Sustainability

Let us surprise you with our contribution to adding new value to society through the power of ceramic technologies.

We are transforming from automotive industry business to CN (Carbon Neutral) and DS (Digital Society) business.

**Innovation Hub**

Westerbachstraße 32, 61476
Kronberg im Taunus,
Germany

Dr. Frank Striebel

Director of New Value Business

**Nippon Electric Glass Europe GmbH**<https://www.neg.co.jp/en/>

Electronics & Semiconductor, Healthcare & Medical, Space & Satellite,

Our company is exploring especially electronics, semiconductor and photonics industries in Europe and working on business development. Business development includes partnerships with European companies/institutes so that we can create new innovation together with them.

**Innovation Hub**

Am Seestern 8, 40547
Duesseldorf,
Germany

Makoto Nishimura

Senior Manager, Electronic Products
Marketing & Business Development

**Niterra EMEA GmbH**<https://www.niterraventures.com>

Agritech & Foodtech, AI & Data, Healthcare & Medical, Energy & Climate tech

We "Venture Lab", located in Berlin, is enthusiastic about looking for collaborative opportunities with promising European startups.

We are eagerly looking for contribution opportunities for new innovation. For example, we recently invested in a promising healthcare tech startup and are still continuing exploring further collaboration partners in the environment, energy, and healthcare sector which we are focusing on.

**Innovation Lab**

Torstraße 107,
10119 Berlin, Germany

Takahiro Yokoyama

Venture architect, new business
development

**Murata Electronics Europe B.V.**<https://www.murata.com/en-eu>

Advanced Manufacturing, Agritech & Foodtech, AI & Data, Biotechnology, Chemicals & Materials, Energy & Climate tech, Healthcare & Medical, Quantum Computing, Microelectronics & Semiconductor, Space & Satellite, Transportation & Mobility, Human Augmentation

The Innovation department of our company, a global leader in the electronics industry, is dedicated to driving innovation through advanced technologies. We collaborate with diverse technology stakeholders to tackle societal challenges and explore areas that synergize with the electronics. Our focus is on fostering partnerships that enhance our capabilities and contribute to a sustainable future.

**Innovation Hub**

Wegalaan 2, 2132 JC,
Hoofddorp, the Netherlands

Tomy Runne

Vice President



Nitto Deutschland GmbH<https://www.nitto.com>**Energy & Climate tech, Chemicals & Materials**

The small team responsible for innovative technology research and strategic planning focuses on climate technology using surface dry processes as PVD and plasma treatment. We accelerate new value creation through European academia, startup and industrial partners.

**Innovation Hub**

Peter-Müller- Straße 26
40468 Düsseldorf

Yuka Yamazaki

Manager/ Thin film technology &
sustainable innovation

**NTT Advanced Technology Corporation**<https://www.ntt-at.com>**Microelectronics & Semiconductor, Smart City & Real Estate, Chemicals & Materials,**

NTT Advanced Technology Corporation (NTTAT) is aiming to collaborate with European companies on GaN (gallium nitride) semiconductors, which are next-generation power semiconductors, as the first theme of open innovation. The application of GaN semiconductors makes it possible to save power in power supply modules, shorten charging time, and reduce the size of motors. NTTAT will provide upstream processes, including the fabrication of GaN epitaxial wafers, and expects its partners to commercialize them as applications.

**Innovation Hub**

The Drivery, Mariendorfer
Damm 1 12099 Berlin
Germany

Hideki Asano

Regional Representative in EU

**SEKISUI EUROPE B.V.**<https://www.sekisui-europe.com>**Transportation & Mobility, Glass Glazing with Electronics/Photonics**

To facilitate future S-LEC™ film developments, we have established four global research centers in our main operational regions (Japan, China, Europe, and the United States). Each research center addresses specific developments based on regional trends and requirements, enabling the development of technologies tailored to the regional market and target applications. This approach also strengthens the planning and development of new PVB interlayers in collaboration with our partners.

To incorporate the latest innovations in S-LEC™ PVB interlayer film for laminated glass, we collaborate with our partners globally. Through open innovation, we are dedicated to proactively integrating technologies from diverse industries to expand the potential of PVB solutions for laminated glass.

**R&D Centre**

Urmonderbaan 22,
Brightlands Chemelot
Campus, The Netherlands

Yusuke Hagiwara

Head of European R&D Center

**NTN Europe**<https://www.ntn-snr.com/>**Advanced Manufacturing, Chemicals & Materials, Commerce & Retail, Space & Satellite, Transportation & Mobility, Robotics**

The Innovation department of NTN Europe is based in Annecy, and is responsible for researching innovative technology (mechanics, material, simulation, etc) and products in the bearing OE and aftermarket market, in automotive, industry, railway and aerospace business.

In addition to our own proposal, we are developing partnerships with outside companies and tech transfer centers. We also promote an acceleration program and propose a specific collaboration to companies in areas such as new mobility, industry 4.0 & robotic, and automotive aftermarket. For example, we are collaborating closely with CIXI and LTM to jointly develop new solutions for active electric mobility and shock absorber aftermarket.

**R&D Centre**

1 rue des usines, 74000
Annecy, France

Christophe Nicot

Research, Innovation and Dev. Support VP

**Panasonic Holdings Corporation**<https://holdings.panasonic/global/corporate/technology/organization.html>**Microelectronics & Semiconductor, Advanced Manufacturing, Chemicals & Materials**

The Innovation department of "Panasonic IMEC Center" is based in Leuven, Belgium, and is responsible for researching innovative microelectronics and semiconductor technology and the latest trends in the global semiconductor and electronic device market.

**R&D Centre**

Kapeldreef 75,
3001 Leuven Belgium

Dr. Sanshiro Shishido

IMEC on-site Manager

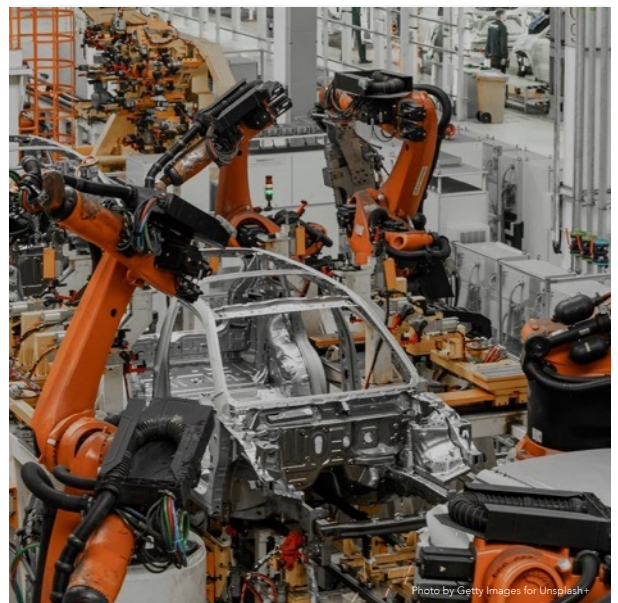


Photo by Getty Images for Unsplash+

FINANCE & INSURANCE

Japan's insurance industry – the world's third largest – is rapidly transforming through the adoption of digital technologies. And while not traditionally recognised as a global financial hub, Japan's banking sector holds the third-highest total assets globally, approximately \$17 trillion USD as of 2023. The country is home to four of the world's top 20 banks, and is now also seeing fast-moving digitalisation in areas such as payments and ecommerce.



Innovation Hub – small team focused on tech/trend scouting



Innovation Lab – established team doing in-market innovation



R&D Centre – highly-established presence with closer ties to industry



CVC / Innovation – investing in startups

Dai-ichi Life International (Europe) Limited

https://www.dai-ichi-life-hd.com/about/info/group_list/europe.html#inter



AI & Data, FinTech & InsurTech, Healthcare & Medical, Web3 & Metaverse

Dai-ichi Life's innovation Lab in London is responsible for technology scouting for new solutions, searching for investment opportunities, and researching trends in the European InsurTech industry, and of the initiatives at European insurance companies. We have made an investment into tech-focussed European VCs, and have invested into a major UK InsurTech.



Innovation Hub

6th Floor, 6 Gracechurch Street, London, EC3V 0AT

Marie Shiobara

Manager of London Innovation Lab



Mitsui Sumitomo Insurance Co., Ltd

<https://www.ms-ins.com/english/>



AI & Data, Energy & Climate tech, FinTech & InsurTech, Healthcare & Medical, Space & Satellite, Transportation & Mobility, Web3 & Metaverse, Smart City & Real Estate

Some members from our Business Design department are based in London and are looking into the potential for researching innovative technology and the latest trends in the European market – in addition to developing partnerships with leading European startups.



Innovation Hub

The Leadenhall Building, 122 Leadenhall Street, London, EC3V 4AG

Kenji Iijima

Special Advisor to the Chairman and CEO, MSIG Corporate Services (Europe) Ltd.



Nippon Life Insurance

<https://www.nissay.co.jp/kaisha/nipponlifex/>



AI & Data, Healthcare & Medical, FinTech & InsurTech, Web3 & Metaverse

Nippon Life Insurance Company is one of the largest life insurance companies in Japan. They started European innovation activities in London in 2019. They are conducting research on the European innovation trends.



Innovation Hub

3 Noble Street, London, EC2V 7EE

Takao Kobari

Senior Manager



Rakuten Group Inc

<https://www.linkedin.com/company/rakuten-blockchain-lab>



Web3 & Metaverse

The Rakuten Blockchain Lab is an engineering team based in Belfast, Northern Ireland. The team is responsible for encouraging experimentation and adoption of blockchain, cryptocurrency and web 3 technologies within the Rakuten group of companies. We have delivered solutions for Rakuten Energy, Rakuten NFT, Rakuten Wallet & Rakuten Pay



R&D Centre

Alexander House, 17a Ormeau Avenue, Belfast, BT2 8HD

Fergal Downey

Executive Officer (Fellow), VP of Engineering



IT & SOFTWARE

Japan has one of the largest IT industries in the world – with the software sector alone accounting for sales of more than 16.7 trillion yen (\$126 billion USD) in 2020. The country ranks also third in the ICT market in the world, with a 6.4% share. Recent government initiatives to promote digitalisation after the coronavirus pandemic are set to further boost the industry – with JETRO focusing on four main markets in the space: 5G, cloud, quantum computing and edge computing.



Innovation Hub – small team focused on tech/trend scouting



Innovation Lab – established team doing in-market innovation



R&D Centre – highly-established presence with closer ties to industry



CVC / Innovation – investing in startups

Digital Garage

<https://www.garage.co.jp/en/>



AI & Data, FinTech & InsurTech, Enterprise software

Our London office is responsible for finding investment opportunities in Europe tech space, mainly in fintech, AI, SaaS, travel and ecommerce verticals.

In addition, we are focusing on developing partnerships with leading European startups and build a bridge between Japan and Europe tech ecosystems.



CVC / Investment

Fora – United House, 9
Pembroke Road,
London, W11 3JY

Naz Ozertugrul

Head of Investment and Partnerships, Europe



DOCOMO Europe Ltd

<http://www.docomo-europe.com/>



FinTech & InsurTech, Transportation & Mobility, Web3 & Metaverse, Telecom (ORAN)

As Japan's leading mobile telecom company, NTT DOCOMO has expanded its business into diversified domains, leveraging technology to extend beyond telecom services.

DOCOMO Europe is a wholly-owned subsidiary of NTT DOCOMO Global, overseeing the DOCOMO group's global business operations and driving integrated and agile strategies across multiple sectors.

Our innovation team in the UK is focused on business development and new business creation in EMEA.



Innovation Hub

1 King William Street
London, EC4N 7AR, UK

Rina Tawata

VP Business Development



NTT DATA Inc

<https://uk.nttdata.com/>



Advanced Manufacturing, AI & Data, Energy & Climate tech, Enterprise software, FinTech & InsurTech, Healthcare & Medical, Quantum Computing, Space & Satellite, Smart City & Real Estate, Transportation & Mobility

NTT DATA Group is investing into a wide range of R&D and innovation related activities across EMEA, from early-stage R&D and university collaborations, through to partnerships with startups and scaleups, and to the development and commercialisation of IP and innovative assets and services to support our clients across a wide range of industries.

Activities cover consortium building for applied R&D with academic and public sector agencies, and collaborative developments.



R&D Centre

Epworth House, 25 City
Road, EC1Y 1AA, London, UK

Tom Winstanley

CTO & Head of New Ventures, NTT DATA UK&I



TEL Venture Capital Inc

<https://www.tel.com/rd/telvc/index.html>



Advanced Manufacturing, AI & Data, Quantum Computing, Microelectronics & Semiconductor

TEL Venture Capital invests in innovative technologies that have synergy with Tokyo Electron – the world's leading semiconductor and display production equipment manufacturer – and works with portfolio companies through supporting development of technologies and products, striving to create new businesses at both companies. We consider portfolio companies as partners, and focus on approaches that lead to joint development or collaborative business to materialize the win-win relationships.

Our investment areas include innovative technologies that generate synergies with Tokyo Electron's businesses in semiconductor and display, their peripheral fields, and other silicon fabrication process technologies.



CVC / Investment

1 Chemin de la Dhuy,
38240 Meylan,
France

Jacques Berg

VP Global Sales



Toshiba Europe

<https://www.toshiba.eu/pages/eu/>



AI & Data, Energy & Climate tech, Quantum Technology, Advanced Manufacturing

The research and innovation laboratories of Toshiba are located in Bristol, Cambridge and Dusseldorf. The laboratories in Bristol and Cambridge are focusing on Data, AI, Advanced Manufacturing and Quantum.

The laboratory in Dusseldorf is focusing on areas related to regenerative concept which includes decarbonisation/net zero and LCA managements. All those laboratories are responsible for running research activities with partners and PoCs in Europe.



Innovation Lab

Bristol & Cambridge, UK
Dusseldorf & Aachen, Germany

Dr. Kohei Onizuka

General Manager of Regenerative Innovation Centre,
Deputy Managing Director of Bristol Research and
Innovation Laboratory



Photo by Getty Images for Unsplash+



Photo by note thanun

Rakuten Capital

<https://capital.rakuten.com/>



AI & Data, FinTech & InsurTech, Space & Satellite, Transportation & Mobility

Rakuten Capital is the corporate venture capital arm of Rakuten Group Inc., and its European office is in Luxembourg. We provide investment funding, sector experience, and operational support to our portfolio companies worldwide. Our mission is to contribute to society by creating value through innovation and entrepreneurship, offering a broad range of online and offline services, including e-commerce, travel, FinTech, digital content, communications, credit cards, banking, securities, insurance, electronic money, and professional sports.



CVC / Investment

2 rue du Fossé, L-1536
Luxembourg

Susumu Ishikura

Head of Investment Management



Photo by Darren Budiman

LIFE SCIENCE & BIO

As the world's second-largest pharma and medtech market, Japan has historically been an innovation centre for the industry. Now, the nation is being spurred on by societal issues such as a population that is ageing at a globally unprecedented rate – with over 28.6% of the population aged 65 or more as of 2020. Against this backdrop, Japan's public and private sectors are working together to establish a new "society of health and longevity".



Innovation Hub – small team focused on tech/trend scouting



Innovation Lab – established team doing in-market innovation



R&D Centre – highly-established presence with closer ties to industry



CVC / Innovation – investing in startups

Astellas Pharma Europe Ltd

<https://www.astellas.com/en/innovation>



Healthcare & Medical

Astellas is dedicated to contributing towards the improvement of the health of people around the world through the provision of innovative and reliable pharmaceutical products. Our VISION is on the forefront of healthcare change to turn innovative science into value for patients.

Our Search and Evaluation office in the UK consistently enhances Astellas' pipeline by catalysing innovation through strategic investments and partnerships for patient VALUE



Innovation Hub

9 Hills Road, Cambridge,
CB2 1GE, UK

Hiro Usuda

Scouting & Transaction Lead,
Business Development



Chugai Pharmaceutical Co., Ltd.

<https://www.chugai.eu/>



Healthcare & Medical, Biotechnology, AI and Analytics

Chugai Pharma's mission is to create innovative drugs for the benefit of patients. In Europe, Chugai has affiliates in UK, France and Germany, in charge of sales, development and regulatory affairs. The European Partnering Team is looking for late-stage assets in the fields of Oncology, Immunology, Hematology and Specialty Care. We seek commercial rights for Europe and Japan. In addition, if there is any interest in early-stage research collaboration with Chugai, we can liaise communication with the Chugai Japanese team.



Innovation Hub

Mulliner House, Flanders
Road, Turnham Green,
London, W4 1 NN, UK

Marion Soto

Head of Partnering Europe



Eisai Ltd

<https://www.eisai.eu/>



Healthcare & Medical, AI & Data, Biotechnology, FinTech & InsurTech, IoT

Eisai's EMEA Knowledge Centre is a European strategic base, incorporating a manufacturing plant, research laboratory, office building and shared facilities. Our key therapeutic areas are neurology, oncology and tropical diseases ("global health").

Eisai is looking for technologies and opportunities for collaboration and venture investments in the drug discovery field and digital health to complement internal R&D and ecosystem building – and to date has conducted multiple collaborations with academic groups and in the biotech sector.



R&D Centre

Mosquito Way, Hatfield,
Herts, AL10 9SN, UK

Peter J. Atkinson PhD

Executive Director & Head, Hatfield Research
Laboratories and UK Academic & Industry Alliances



Fuji Europe Africa B.V.

www.fujiioileurope.com



Agritech & Foodtech

The Fuji Oil Global Innovation Center Europe is located in the heart of the Dutch Foodvalley and is focused on external partnerships with academic institutions and companies with innovative technologies in the field of sustainable and mild food processing, with a focus on plant-based foods, and co-creation with European-based partners to utilize Fuji's food-related technologies to achieve win-wins and market growth.

Activities include co-creation and R&D collaborations, technology scouting and external partnering.



Innovation Hub

Plus Ultra II, Bronland 10,
6708 WH Wageningen,
The Netherlands

Dr Liz Kamei

Managing Director



Kao Chemicals Europe, S.L.U.<https://www.kaochemicals-eu.com>**Chemicals & Materials**

We contribute to the satisfaction and enrichment of people's lives and towards sustainable development.

In order to achieve these goals, we are a solutions provider that adds value to the manufacture of hygiene, health and beauty products.

**R&D Centre**

Puig dels Tudons, 10 08210
Barbera del Valles,
Barcelona, Spain

Nobumichi Kamiyoshi

VP, RD Director

**Kikkoman Europe R&D Laboratory B.V.**<https://www.kikkoman.eu/>**Agritech & Foodtech, AI & Data, Biotechnology, Chemicals & Materials, Healthcare & Medical**

Kikkoman Europe R&D Centre is based in Wageningen. In addition to strong connection with Dutch university and academia such as Wageningen University and TNO, Kikkoman seeks possible future collaboration with European university, institutes and start-ups in early stage.

**R&D Centre**

Nieuwe Kanaal 7G, 6709 PA
Wageningen,
The Netherlands

Takuya Sato

General Manager

**Maruho Deutschland GmbH**<https://www.maruho.co.jp/english/>**Healthcare & Medical, Biotechnology**

Maruho is a pharmaceutical company that has contributed to people's health and better living for over 100 years since its founding in 1915. Maruho Deutschland GmbH is focused on the pharmaceutical business in dermatology, and related dermatology areas – seeking in-licensing, co-development and investment opportunities.

**Innovation Hub**

Berliner Allee 29, 40212,
Dusseldorf, Germany

Takeshi Higuchi

Director, R&D Business Strategy

**Shionogi**<https://www.shionogi.com/global/en/innovation.html>**Biotechnology, Healthcare & Medical**

Shionogi is involved in activities including:

- Search & evaluation of innovation opportunities (co-R&D, licensing, investment)
- Building academia-industry research collaborations
- Developing new partnerships and B2B alliances
- Supporting management of existing collaboration projects

**Innovation Hub**

FIFTY PADDINGTON, 50
Eastbourne
Terrace, London, UK

Yoshiro Shiba

Director of Global Innovation

**Sysmex R&D Center Europe GmbH**<https://www.sysmex-rdce.com/>**Healthcare & Medical**

The Innovation department is based in Hamburg, and is responsible for researching innovative technology and the latest trends in the European market. We develop partnerships with leading European academia and clinician. In addition, we execute clinical studies for future diagnosis.

**R&D Centre**

Falkenried 88, 20251
Hamburg, Germany

Seigo Suzuki

President

**Yokogawa Innovation Switzerland**<https://www.yokogawa.com/yis/>**Agritech & Foodtech, Biotechnology, Chemicals & Materials, Energy & Climate tech, Biomanufacturing**

Yokogawa Innovation Switzerland (YIS) was established in 2020 as a bioCenter of Excellence of Yokogawa. YIS is responsible for building a strong base for its bioeconomy business by providing quick and proactive market research and development activities and introducing cutting-edge biotechnologies.

Currently, YIS focuses on biomanufacturing with the single-cell manipulation technology in Yokogawa.

**R&D Centre**

Hegenheimermattweg 167A,
4123 Allschwil, Switzerland

Daisuke Nojima

Managing Director



MOBILITY

Japan is well-known for its global automotive brands – but revolutions in electrification and smart mobility have opened interest in the space to a huge range of other Japanese corporations. From battery materials, V2X vehicle communication, MaaS (Mobility as a Service), and more – the opportunity in partnering with a Japanese company is greater than ever before.



Innovation Hub – small team focused on tech/trend scouting



Innovation Lab – established team doing in-market innovation



R&D Centre – highly-established presence with closer ties to industry



CVC / Innovation – investing in startups

AISIN Europe

<https://www.aisin-europe.com> & <https://www.roadtrace.eu>



AI & Data, Smart City & Real Estate, Transportation & Mobility

AISIN Europe innovation team related to location-based services, is based in Belgium, south of Brussels. We are developing new mobility solutions, in partnership with companies, research centers and university.



R&D Centre

Avenue de l'Industrie 19,
1420 Braine l'Alleud,
Belgium

Frédéric Burguet

Strategic Innovation Senior Manager



DENSO AUTOMOTIVE Deutschland GmbH

www.denso.com



Agritech & Foodtech, Energy & Climate tech, Smart City & Real Estate, Transportation & Mobility

DENSO seeks synergies with unique European start-ups which already have a prototype or a product, for the market entrance by co-development, PoC and/or further business collaboration.



Innovation Lab

Freisinger Str. 21-23, 85386
Eching, Bayern,
Germany

Go Kojima

Senior Manager, Business Innovation & Development



East Japan Railway Company London Office

www.jreast.co.jp



Transportation & Mobility, Smart City & Real Estate, Commerce & Retail, AI & Data, Agritech & Foodtech

The East Japan Railway Company is one of the world's largest railway companies and a market leader in railway operations and maintenance.

In the UK we have an MoU with the University of Birmingham to create innovative rail technology



Innovation Hub

4th Floor, 30-31 Farnival
Street, London,
EC4A 1JQ, UK

Susumu Nagawa

London Representative



EXEDY Clutch Europe Ltd.

<https://www.saietta.com/>



Advanced Manufacturing, Energy & Climate tech, Transportation & Mobility

As part of a Japanese auto parts manufacturer based in Silverstone, the company aims to bring future tech business from Europe, the most advanced region globally in the development of next-generation mobility technologies.



R&D Centre

1500A Silverstone Technology
Park, Northamptonshire,
NN12 8FU

Kenichi Takezaki

Director



EXEDY Corporation<https://www.exedy.com/en/>**Advanced Manufacturing, Energy & Climate Tech, Transportation & Mobility**

The EXEDY Group established its first European R&D center in Silverstone, UK, in 2024. This center explores not only the field of mobility but also a wide range of climate technologies.

Leveraging core technologies such as vibration, friction, and fluid dynamics, it collaborates with startups to identify and develop new business ventures.

**Innovation Lab**

1500A Silverstone Technology Park, Northamptonshire, NN12 8FU

Yuki Kawahara

Head of Advanced Development, Deputy Executive General Manager of Development Headquarters

**Honda Trading Europe GmbH**<https://www.hondatrading.com/>**Transportation & Mobility, Commerce & Retail, Chemicals & Materials**

The head quarter of Honda Trading Europe GmbH is located in Frankfurt, Germany. Our New Business Development section is researching technology and the latest trends in the European market. Especially, our focusing is about mobility related. For instance, battery recycling

**Innovation Hub**

Hanauer Landstraße 222-226, 60314 Frankfurt am Main, Germany

Kenichi Kametani

New Business Development Manager

**Honda R&D Europe (Deutschland) GmbH**<https://www.honda.de>**Advanced Manufacturing, Energy & Climate tech, Transportation & Mobility, AI & Data**

Honda R&D Europe conducts research and studies necessary for product and service development, with a focus on mobility, energy, communication and the environment.

**R&D Centre**

Carl-Legien-str.30, 63073 Offenbach, Germany

Patrik Ponec

Vice President

**Mazda Motor Europe GmbH, European R&D**www.mazda.eu**Transportation & Mobility, Automotive Technologies**

As Mazda's European Research & Development Centre, design, invention, and technical innovation are at the core of what we do.

In cooperation with our Japanese mother company Mazda Motor Corporation, we develop and design models from the initial concept to the finished vehicle, helping to shape a sustainable future of mobility every day.

**R&D Centre**

61440 Oberursel, Hiroshimastrasse 1, Germany

Christian Schultze

Deputy General Manager

**Nissan Motor Manufacturing (UK) Ltd**

https://www.nissan-global.com/EN/COMPANY/PROFILE/EN_ESTABLISHMENT/EUROPE/

**Transportation & Mobility, Smart City & Real Estate, Energy & Climate tech, Chemicals & Materials, Advanced Manufacturing, AI & Data**

The Research and Advanced Engineering department of NTCE (Nissan Technical Centre Europe) is based in Cranfield, and is responsible for researching innovative technology and the latest trends in the European market.

In addition to developing partnerships with leading European companies, we are also looking for the partnership opportunities in UK and EU, especially carbon neutral technologies, battery, e-PT and related technologies and also advanced manufacturing technologies.

**Innovation Lab**

Cranfield Technology Park, Moulsoe Road Cranfield, Bedfordshire, MK43 0DB, UK

Kazuyuki Sakamoto

Director Research & Advanced Engineering

**Toyota Material Handling Europe AB**<https://toyota-forklifts.eu/>**AI & Data, Advanced Manufacturing, Commerce & Retail, Energy & Climate tech, Transportation & Mobility, OTHER, Smart City & Real Estate, Quantum Computing, Chemicals & Materials, Supply Chain and Logistics, Field Service**

TMHE Strategic Innovation Office aims to research and investigate the latest business and technology trends that can have major impact on the transformation of the supply chain industry. TMHE has established Research and Innovation as well as Development centres across Europe focusing on delivering state of the art products and services for the supply chain domain, including manual and fully automated vehicles. The solution portfolio also consists of software solutions and new innovative energy solutions.

TMHE has well established start up collaboration arenas such as IndX in Sweden and LogiVille in Belgium. We are regularly attending relevant start up events across Europe in our search for new innovative solutions. We are actively searching for innovative startups that have solutions targeting our core focus areas - Autonomy, Sustainability and Connectivity

**Innovation Lab**

Svarvargatan 8, 59581 Mjölby, Sweden

Hans Larsson

Director Strategic Innovation



Toyota Motor Europe

www.toyota-europe.com



AI & Data, Chemicals & Materials, Energy & Climate tech,
FinTech & InsurTech, Transportation & Mobility, Advanced
Manufacturing, Microelectronics & Semiconductor

To transform into a mobility company with a focus on contributing to the realisation of a sustainable society, TME aims to develop innovative technologies applicable to product development and services. Whilst we have dedicated teams in R&D, Production Engineering, Manufacturing, IT and HR, we foster a culture to promote innovation amongst all employees.



R&D Centre

Karen Peeters
Head of Business Innovation

Joost Segers
Senior Manager Social Impact

Frederic Knockaert
Manager Innovation & Tech Mgt

Avenue du Bourget
60, 1130 Brussels,
Belgium



Photo by Ibrahim Abazid



Photo by Casey Horner

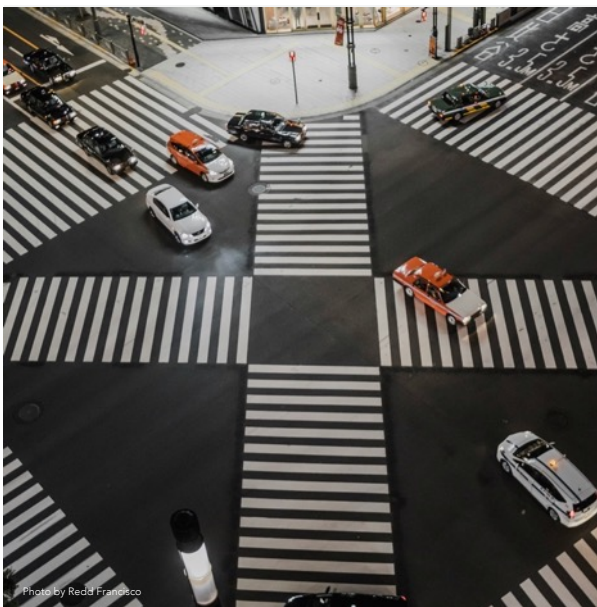


Photo by Reda Francisco

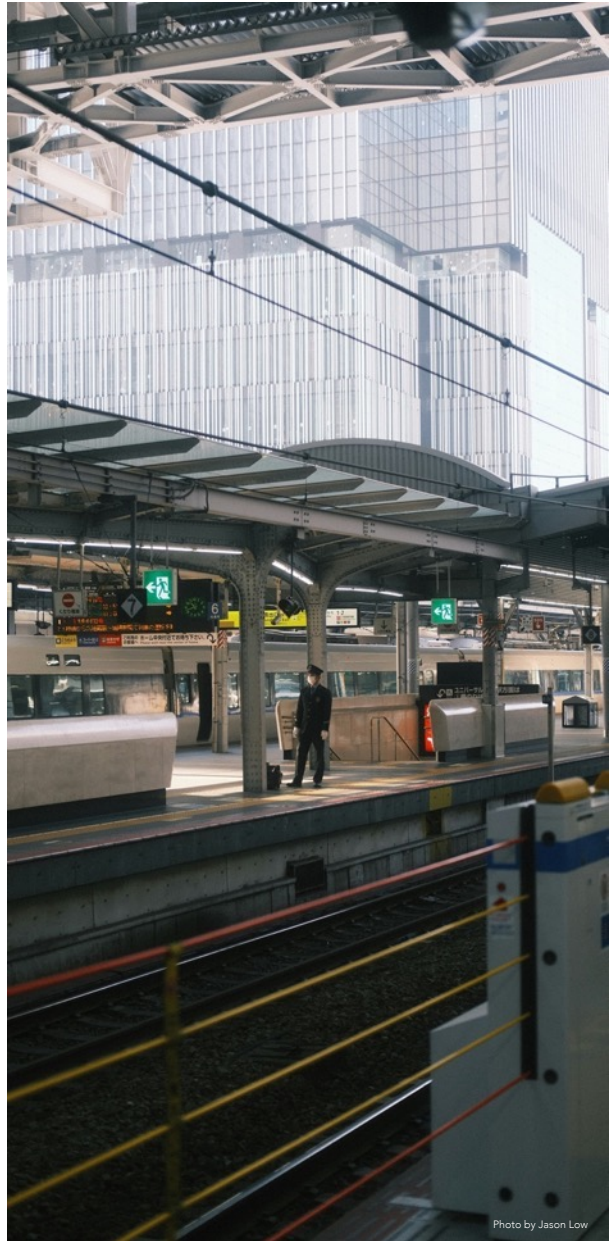


Photo by Jason Low

MULTI-SECTOR

Japan is home to some of the world's largest conglomerates, some of which are featured in this directory. From energy and infrastructure, to finance, digital technology, and more – Japan's multi-billion-dollar conglomerates are involved in almost every conceivable sector. And from a startup perspective, leveraging these wide-ranging networks can be a powerful way to accelerate the growth of your business.



Innovation Hub – small team focused on tech/trend scouting



Innovation Lab – established team doing in-market innovation



R&D Centre – highly-established presence with closer ties to industry



CVC / Innovation – investing in startups

Hitachi Europe Ltd.

<http://innovate.hitachi.eu/en/>



AI & Data, Biotechnology, Energy & Climate tech, Quantum Computing, Transportation & Mobility, Metaverse

Our European R&D Centre innovates in mobility, energy, and data circulation industries in Europe through integration of our design capabilities, digital and domain technologies. We are taking a lead in innovation by collaborating with a wide range of stakeholders.



R&D Centre

12th Floor, 125 London Wall,
London EC2Y 5AJ, UK

Dr. Kazuyuki Sugimura

General Manager & CTO, European R&D Centre



Hitachi Ventures

www.hitachi-ventures.com



Advanced Manufacturing, AI & Data, Biotechnology, Energy & Climate tech, FinTech & InsurTech, Healthcare & Medical, Quantum Computing, Microelectronics & Semiconductor, Smart City & Real Estate, Transportation & Mobility, Web3 & Metaverse

Hitachi Ventures (HVG) with its HQ in Munich besides Palo Alto and Boston is the global CVC arm of Hitachi Ltd. HVG minority invests in selected early-stage startups in NA, EMEA and now India too. In focus are fast scaling companies in upcoming markets with strategic future fit to Hitachi in all sectors of Digital, Environment, Industry and Healthcare.

HVG recently increased the amount they are investing in startups to \$1bn with the launch of a new \$400m fund, which will focus on the next wave of technological breakthroughs and innovative businesses.



CVC / Investment

Leopoldstr 154, 80804
Munich, Germany

Dr Stefan Gabriel

CEO and MD



Mitsubishi Corporation London Branch

<https://www.mitsubishicorp.com/jp/en/index.html>



AI & Data, Commerce & Retail, Enterprise software, Quantum Computing, Transportation & Mobility

My department is responsible for building a competitive ecosystem with a wide range of corporates and enablers in order to drive digital transformation. There are multiple strategic approaches to accelerate the strategy.

- Strategic investment (incl. CVC, LP investment)
- Partnerships (Both tech and non-tech)
- Project development (e.g. PoC, Pilot project)



Innovation Hub

MidCity Place, 71 High
Holborn, London, WC1V
6BA, United Kingdom

Yohei Matsueda

General Manager for Digital Solution



Presidio Ventures Europe

www.presidio-ventures.com



Advanced Manufacturing, AI & Data, Biotechnology, Energy & Climate tech, Enterprise software, FinTech & InsurTech, Healthcare & Medical, Quantum Computing, Space & Satellite

As Sumitomo Corporation Europe, we have been operating a Business Development Unit in Europe since 2017. In addition, our CVC arm, Presidio Ventures Europe, was established in 2021. We have made several investments in European Deep-tech from World Class Academies such as Cambridge, Oxford, and Imperial Universities



CVC / Investment

UK, Germany, Norway,
Spain, Poland, France

Kuni Kawase

Managing Director



SBI Ventures Europe GmbH<https://www.sbiventures.eu/>

Advanced Manufacturing, Agritech & Foodtech, AI & Data, Chemicals & Materials, Quantum Computing, FinTech & InsurTech, Space & Satellite, Microelectronics & Semiconductor, Transportation & Mobility

We are the European Venture capital unit of SBI Group. We are actively looking for the opportunity to invest in European startups who have cutting-edge technology. We are focusing on all European countries.

We have a lot of connection with Japanese corporations through SBI's huge network. We support our European portfolio companies to grow their business here in Europe as well as to expand their business into Japanese market via SBI's partner network.

**CVC / Investment**Krausenstraße 9-10,
10117 Berlin, Germany**Takeshi Kuribayashi**

Managing Director

**Sony Innovation Fund**<https://www.sonyinnovationfund.com/>

AI & Data, Energy & Climate tech, Web3 & Metaverse, Microelectronics & Semiconductor, Entertainment (Gaming, Music & Sports)

Sony Innovation Fund EMEA team is based in London, and is responsible for investing innovative technology companies in the areas of deeptech, entertainment, web3/blockchain and climate.

We also have responsibilities to develop strategic partnerships between Sony Groups and EMEA startups.

**CVC / Investment**Brunel Building, 2 Canalside
Walk, London, W2 1DG**Satoko Suenaga**

Investment Manager

**Sojitz Corporation of Europe B.V.**<https://www.sojitz.com/en/corporate/organization/>**Agriculture & Food/Beverage, Transportation & Mobility, Chemical, Energy, Metal**

Sojitz Corporation is a sogo shosha based in Tokyo, Japan – and is engaged in a wide range of businesses globally. At Sojitz Corporation of Europe B.V, the company is searching for investment opportunities – for example in areas such as not only agriculture & food, transportation & mobility, but also the recycling of industrial materials.

**Innovation Hub**Rembrandt Tower 11 Floor,
Amstelplein 1, 1096HA,
Amsterdam, The Netherlands**Ryoichi Aihara**

General Manager

**Sumitomo Corporation Europe**www.sumitomocorporation.com**Chemicals & Materials, Energy & Climate tech, Enterprise software, FinTech & InsurTech**

Sumitomo Corporation Europe established a Business Development Unit in Europe in 2017. The main theme of new business development is Green & Digital.

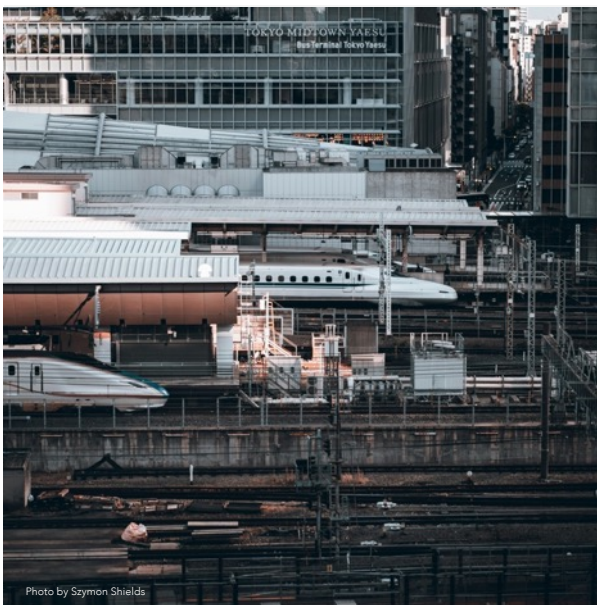
**Innovation Lab**UK, Germany, Norway,
Spain, Poland, France**Kuni Kawase**General Manager, Innovation
Promotion Department

Photo by Szymon Shields



Photo by Szymon Shields

INDEX



Directory Companies: Sectors of Interest

Company Name	Page	Advanced Manufacturing	Agritech & Foodtech	AI & Data	Biotechnology	Chemicals & Materials	Commerce & Retail	Energy & Climate tech	Enterprise software	FinTech & InsurTech	Healthcare & Medical	Quantum Computing	Microelectronics & Semiconductor	Smart City & Real Estate	Space & Satellite	Transportation & Mobility	Web3 & Metaverse	OTHER
AISIN Europe	38			✓										✓				
Astellas Pharma Europe Ltd	36			✓				✓			✓			✓				
Chubu Electric Power Co., Inc.	28			✓				✓						✓				
Chugai Pharmaceutical Co., Ltd.	36										✓							
Dai-ichi Life International (Europe) Limited	33			✓						✓	✓						✓	
Daikin Europe N.V.	28			✓				✓						✓				Advanced technology related to heating, ventilation, and Air Conditioning
DENSO AUTOMOTIVE Deutschland GmbH	38		✓					✓						✓		✓		
Digital Garage	34			✓					✓	✓								
DOCOMO Europe Ltd	34									✓						✓	✓	telecom(ORAN)
East Japan Railway Company London	38		✓	✓			✓			✓				✓		✓		
Eisai Ltd	36			✓	✓					✓	✓							
ENEOS Europe	28					✓		✓								✓		
EXEDY Clutch Europe Ltd.	38	✓						✓								✓		
EXEDY Corporation	39	✓						✓								✓		
Fuji Europe Africa B.V.	36		✓															
Hitachi Europe Ltd.	41			✓	✓			✓								✓	✓	
Hitachi Ventures	41	✓		✓	✓			✓		✓	✓	✓	✓	✓	✓	✓	✓	
Honda R&D Europe (Deutschland) GmbH	39	✓		✓				✓								✓		
Honda Trading Europe GmbH	39					✓	✓	✓								✓		
Idemitsu Innovation Europe AG	28		✓		✓	✓		✓					✓		✓			
IHI Europe Ltd.	30	✓						✓										
JX Advanced Metals Corporation	30	✓		✓				✓				✓	✓		✓			Photonics
Kao Chemicals Europe, S.L.U.	37					✓												
Kikkoman Europe R&D Laboratory B.V.	37		✓	✓	✓	✓					✓							
KUBOTA HOLDINGS EUROPE B.V.	30		✓	✓														
Maruho Deutschland GmbH	37				✓						✓							
Mazda Motor Europe GmbH, European R&D	39															✓		Automotive Technologies
Mitsubishi Chemical Europe	30	✓	✓	✓	✓	✓		✓			✓	✓	✓					
Mitsubishi Corporation London Branch	41			✓			✓		✓			✓	✓			✓		
Mitsubishi Electric Europe B.V.	31	✓	✓	✓				✓				✓	✓	✓	✓	✓	✓	
Mitsubishi Heavy Industries EMEA Ltd	29	✓		✓		✓		✓			✓	✓	✓	✓	✓	✓	✓	
Mitsui Chemicals Europe GmbH	31	✓			✓	✓		✓			✓	✓	✓	✓	✓	✓	✓	
Mitsui Sumitomo Insurance Co., Ltd	33			✓				✓		✓	✓	✓	✓	✓	✓	✓	✓	
Murata Electronics Europe B.V.	31	✓	✓	✓	✓	✓		✓			✓	✓	✓	✓	✓	✓		Human Augmentation
NGK Europe GmbH	31							✓			✓	✓	✓	✓				
Nippon Electric Glass Europe GmbH	31									✓	✓	✓	✓		✓			
Nippon Life Insurance	33			✓						✓	✓						✓	
NIPPON SHOKUBAI EUROPE N.V.	29					✓		✓										
Nissan Motor Manufacturing (UK) Ltd	39	✓		✓	✓	✓		✓						✓		✓		
Niterra EMEA GmbH	31		✓	✓				✓			✓							
Nitto Deutschland GmbH	32					✓		✓										
NTN Europe	32	✓				✓	✓								✓	✓		Robotics
NTT Advanced Technology Corporation	32					✓							✓	✓		✓		
NTT DATA Inc	34	✓		✓				✓	✓	✓	✓	✓	✓	✓	✓	✓		
Osaka Gas UK, Ltd	29			✓				✓										
Panasonic Holdings Corporation	32	✓				✓							✓					
Presidio Ventures Europe	41	✓		✓	✓			✓	✓	✓	✓	✓	✓		✓	✓		
Rakuten Capital	35			✓						✓						✓		
Rakuten Group Inc	33																✓	
SBI Ventures Europe GmbH	42	✓	✓	✓		✓				✓		✓	✓		✓	✓		
SEKISUI EUROPE B.V.	32															✓		
Shimizu Corporation	29			✓				✓						✓		✓		
Shionogi	37				✓						✓							
Sojitz Corporation of Europe B.V	42		✓			✓		✓								✓		
Sony Innovation Fund	42			✓				✓					✓				✓	Entertainment - gaming, music & sports
Sumitomo Corporation Europe	42					✓		✓	✓	✓								
Sysmex R&D Center Europe GmbH	37							✓			✓							
TEL Venture Capital Inc	34	✓		✓								✓	✓					
Tokyo Electric Power Company Holdings, Inc	29							✓										Offshore Wind Power, Interconnector
Tokyo Gas United Kingdom Ltd.	29			✓				✓										
Toshiba Europe	35	✓		✓				✓				✓						
Toyota Material Handling Europe AB	39	✓		✓		✓	✓	✓		✓				✓		✓		Supply Chain and Logistics, Field Service
Toyota Motor Europe	40	✓		✓		✓	✓	✓		✓			✓	✓		✓		
Yokogawa Innovation Switzerland	37		✓		✓	✓		✓										Biomanufacturing



Photo by ZHENYU TUD

JETRO (Japan External Trade Organisation) London Investment and Innovation Division



Address: Cheapside House, 134/138 Cheapside, London, EC2V 6BJ



Email: LDN_Invest@jetro.go.jp



LinkedIn: <https://www.linkedin.com/company/jetro-europe-innovation/>



Website: https://www.jetro.go.jp/uk/Invest_in_Japan.html

About Intralink

Intralink is an international business development and innovation consultancy specialising in international markets. With 140 employees, a 35-year track record and more than 20 locations across three continents, our mission is to accelerate your innovation, growth and green transition through cost-effective, results-driven global engagement.