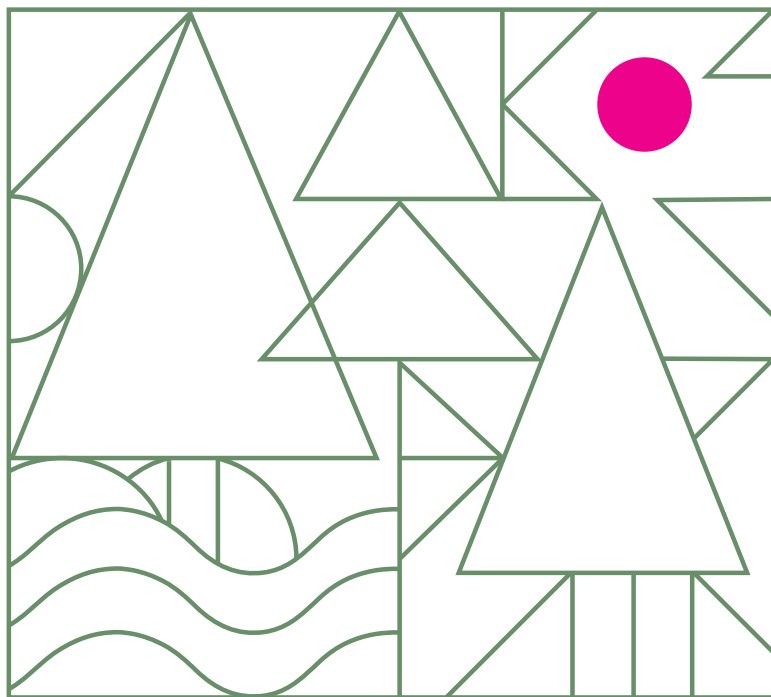


C E S 2 0 2 6

J E T R O



J A P A N P A V I L I O N

06
TUE

- 11am MITSUME:Stage Intro
ASK ME ANYTHING_part 1
coffee treat
- 1:30pm MITSUME:Live Art Performance
INTERNATIONAL PITCH BATTLE
- 3:30pm MITSUME:Live Art Performance
Use-Case SHOWCASE_part 1
coffee treat

07
WED

- 11am MITSUME:Stage Intro
JAPAN CES AWARD SPOTLIGHT
coffee treat
- 1:30pm MITSUME:Live Art Performance
Use-Case SHOWCASE_part 2
- 3:30pm MITSUME:Live Art Performance
ASK ME ANYTHING_part 2
coffee treat

08
THU

- 11am MITSUME:Stage Intro
ASK ME ANYTHING_part 3
coffee treat
- 1:30pm MITSUME:Live Art Performance
Use-Case SHOWCASE_part 3
- 3:30pm MITSUME:Live Art Performance
ASK ME ANYTHING_part 4
coffee treat



spin & win!

Win an original tote!
Visit any two exhibitors, collect
two tickets, and enter the prize
draw for your chance to win!

stage

MITSUME : Live Art Performance – Kicking off the sessions, Japanese visual artist MITSUME will perform live on stage!

ASK ME ANYTHING – A Q&A session that highlights the story and uniqueness behind each startup and its product.

INT'L PITCH BATTLE – A high-energy pitch showdown where founders from around the world battle it out.

Use-Case SHOWCASE – Short presentations that show how each startup's product can be used in practical ways.

JAPAN CES AWARD SPOTLIGHT – A premier showcase celebrating Japan's CES award-winning innovators.

art

MITSUME, a Japanese visual artist, brings bold, unforgettable creations that wow audiences.

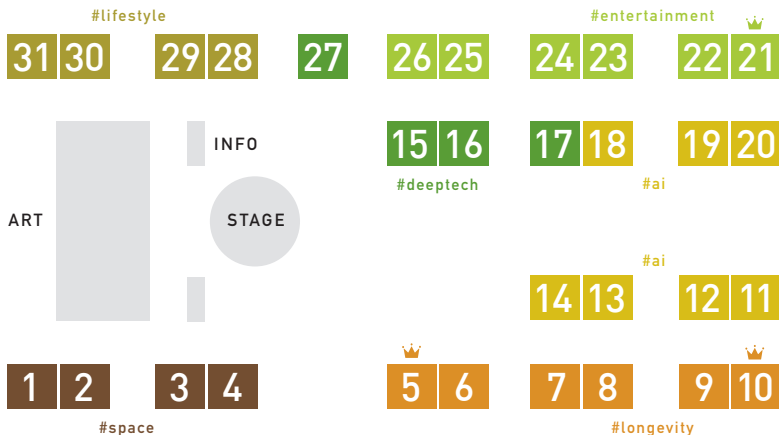
He'll perform live on stage each of the three days, followed by an audience collaboration to create a unique, one-of-a-kind artwork. Join the fun!



coffee



We'll serve coffee
after select sessions.
First come, first served!



CES Award Honorees

#space

1. Hello Space
2. Outer Rim Exploration Inc.
3. SoraMaterials inc.
4. Innovative Space Carrier Inc.

#longevity

5. SHOSABI Inc.
6. Digireha Inc.
7. Any-Edge Inc.
8. Vesica AI
9. Almoji LLC
10. UNTRACKED Inc.

#ai

11. QUANDO,INC.
12. Qlay
13. CADDi Co., Ltd.
14. Tokoshie Inc.
18. CREATANT
19. Dwilar, Inc.
20. Verne Technologies, Inc.

#deeptech

15. CacheAI Technologies, Inc.
16. E-OPTO
17. TRINEAR INC.
27. TopoLogic Inc.

#entertainment

21. AMATELUS Inc.
22. UPSIDE SPORTS ENTERTAINMENT
23. Gakugeki Inc.
24. Portalgraph Inc.
25. AVITA, Inc.
26. POCKET RD Inc.

#lifestyle

28. ASYM Inc.
29. Wiillow Inc.
30. NZero, Inc.
31. UNITED SILK Co.,Ltd.

exhibitors



booth 01

#space

Smart E-bike powered by MAG DRIVE

RIDE & GENERATE POWER

The world's first semi-superconducting mobility device features an innovative regenerative drive system, "MAG DRIVE," which charges the battery while accelerating and coasting — with zero magnetic resistance as you pedal. "MAG DRIVE" is compatible with all types of mobility devices.

Hello Space / info@hello-space.co



booth 02

#space

ORE MuonScope™

SUBSURFACE IMAGING: INFRA, MINING & SPACE

We deliver portable muon sensors that produce high-resolution 3D subsurface maps for efficient mineral discovery, infrastructure integrity assessment, and pioneering off-world resource exploration to support sustainable human presence beyond Earth.

Outer Rim Exploration Inc. / balaji@ore.space, jeremy@ore.space





booth 03

#space

SoraMaterial

A MATERIAL THAT FLOATS

SoraMaterial develops innovative ultra-light materials — lighter than air and multifunctional — for aerospace, automotive, mobility, and electronics, enabling advanced thermal insulation, sound absorption, and electromagnetic wave shielding and absorption with minimal weight.

SoraMaterials inc. / t-osato@sora-materials.com



booth 04

#space

NARRAVITY

DEFINE IN SPACE. DESIGN FOR EARTH

NARRAVITY is a revolutionary micro-satellite platform for brand innovation. Brands can send products into space via NARRAVITY and monitor and control them from the earth. Our services include consulting, launch, and post-launch data management.

Innovative Space Carrier Inc. / info@narravity.io



guest



MITSUME

MITSUME, a designer and artist, is known for his unforgettable, colorful works. He manages the full creative process, from planning to designing apparel and merchandise. His live performances—ranging from acrylic painting to large-scale digital art—are tailored to each venue. He performs worldwide, including Japan, the U.S., Europe, and Asia.





booth 05

#longevity

SHOSABI Assessment

RELEARNING BRAIN-BODY COORDINATION

SHOSABI is the patented intelligent motion system powered by performance science. It helps humans relearn what the body forgets, guiding movement back to its natural design and redefining how we MoveWell.

SHOSABI Inc. / info@shosabi.co.jp



booth 06

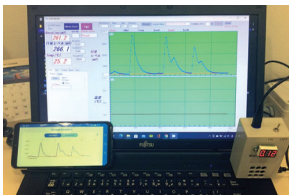
#longevity

Digireha

DIGITAL INTERACTIVE REHABILITATION SYSTEM

Gamification-based rehabilitation apps enhance motivation for people with disabilities. Customizable sensors adapt to each user's needs, while databases collect and analyze data to deliver personalized, evidence-based rehabilitation experiences.

Digireha Inc. / global@digireha.com



booth 07

#longevity

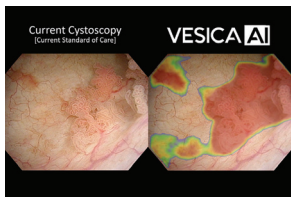
S-KIT

WE SNIFF PERIODONTAL DISEASE!

S-KIT is a point-of-care device that provides real-time visualization of oral hygiene by detecting volatile sulfur compounds (VSCs) in breath and measuring pH levels in human and pet saliva.

Any-Edge Inc. / any-edge.inc@ymail.ne.jp





booth 08

#longevity

Vesica AI

REVOLUTIONIZING BLADDER HEALTH

Transforming urology with AI that visualizes and maps bladder cancer in real time, supporting physicians with data-driven diagnosis and reducing the high recurrence rate that makes bladder cancer the most expensive cancer to treat.

Vesica AI / info@vesica-ai.com



booth 09

#longevity

KinaBot

BRAIN HEALTH BAROMETER

Using just a short sample of natural speech, KinaBot instantly assesses key cognitive indicators and delivers an objective score to healthcare providers, simplifying early detection and giving individuals clear, actionable insight into their brain health over time.

Almoji LLC / aoi@aimojitech.com



booth 10

#longevity

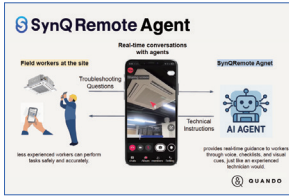
StA²BLE

WHAT IS YOUR STANDING-AGE?

StA²BLE is the world's first device that assesses fall risk in just one minute. It provides instant reports and AI-powered game-based training to improve balance and help prevent future falls.

UNTRACKED Inc. / info@untracked.co.jp





SynQRemote Agent

AI-POWERED REMOTE ASSISTANT

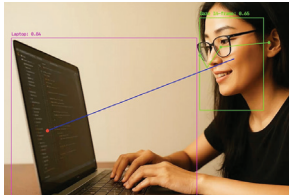
AI agents record field interactions and provide real-time expert guidance, enabling even inexperienced workers to maintain safety, quality, and efficiency — an innovative AI empowering skill transfer.



booth 11

#ai

QUANDO,INC. / pr@quando.jp



AI Proctor

CATCH AI-CHEATING DURING INTERVIEWS

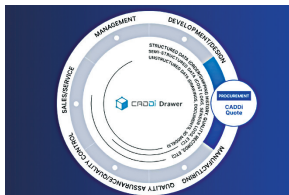
Qlay is an AI Proctor that catches AI-assisted cheating during remote interviews and tests. Qlay monitors eye movements and speech cadence, and also uses a dual-camera setup for secure evaluation.



booth 12

#ai

Qlay / contact@qlay.ai



CADDi

AI DATA PLATFORM FOR MANUFACTURING

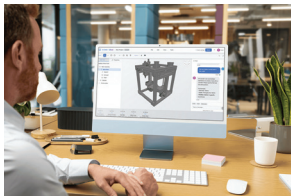
CADDi is an AI-driven manufacturing platform that unifies all siloed drawings, documents, CAD files, and expertise — empowering everyone from executives to operators to access insights and make faster, smarter decisions.



booth 13

#ai

CADDi Co., Ltd. / drawer.info@caddi.com



booth 14

#ai

Modeling Professional AI

THE AI 3D DESIGNER

Modeling Professional AI shortens the entire design-prototype-test cycle to mere seconds, using advanced generative intelligence to analyze, simulate, and optimize each iteration — automatically converging on the most efficient and manufacturable design in real time.

Tokoshie Inc. / tatsunori.watanabe@tokoshie3d.xyz



booth 15

#deeptech

Cache AI

90% CHEAPER, 10x FASTER

Cache AI is a patented semantic-caching middleware that cuts LLM cost and latency by reusing validated outputs across models - enabling faster, safer, fully auditable use.

CacheAI Technologies, Inc.
info@cacheaitechnologies.com



booth 16

#deeptech

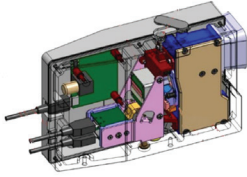
E-OPTO Ultra-Fast Glass-Organic Hybrid Optical Modulator

ULTRA-FAST GREEN OPTICAL MODULATOR

E-OPTO develops ultra-high-speed thin-film glass-organic hybrid optical modulators exceeding 140 GHz bandwidth, reducing transceiver DSP power by 10-15 W and enabling energy-efficient AI and data-center optical interconnects for 400G-1.6T systems.

E-OPTO / enamiyus@gmail.com





booth 17

#deeptech

Wide-Band Visualization Camera

OPTICAL FUSION, REALTIME, AI

This groundbreaking Optical Fusion technology captures visible, infrared, and UV light simultaneously, delivering real-time data beyond human vision and enabling AI-optimized solutions in autonomous driving, robotics, defense sensing, gas detection, and medical applications

TRINEAR INC. / info@trinear-inc.com



booth 18

#ai

CREATANT

CREATANT CREATIVE INTELLIGENCE

CREATANT is an intelligent visual workspace that acts as your Creative Intelligence, unifying your inspiration, projects, and clients. It automatically tags and organizes every digital asset and learns your project aesthetic and workflow, accelerating your creative process and allowing you to bring ideas to life faster.

CREATANT / seref@creatant.com



Dwilar

booth 19

#ai

Lita

GLOBAL CREDIT ASSESSMENT ENABLED BY AI-AGENTS

Our service harnesses cutting-edge AI to create a unified credit profile for individuals and enterprises worldwide, ensuring you can tap into financial services across borders without missing a beat.

Dwilar, Inc. / yoshitaka_nakamura@dwilar.tech





booth 20

#ai

Wearphone

THE VOICE-AI WEARABLE

Wearphone is a voice-AI wearable mask that minimizes voice leakage using active noise cancellation, delivering clear speech to both people and AI systems. Ideal for use in cafés, trains, and offices - for private meetings, real-time summaries, translation, and seamless sharing.

Verne Technologies, Inc. / info@verne-tech.com



AMATELUS

booth 21

#entertainment

SwipeVideo SaaS

INTERACTIVE FREE-VIEWPOINT AND MULTI-ANGLE LIVE STREAMING SOFTWARE

SwipeVideo is the world's first patented cloud-based streaming technology that empowers users to seamlessly and freely switch perspectives by swiping through footage captured from an unlimited number of cameras. Built as a lightweight HTML5 player, SwipeVideo works on any browser and can even stream live over 4G networks.

AMATELUS Inc. / k.shiraishi@amatelus.co.jp



booth 22

#entertainment

EXCI-TABLE

SPORTS PREDICTION TABLE GAME

The world's first AI-powered sports prediction table game — where fans of all ages predict, play, and share the thrill. Online or offline, it transforms passive viewing into unforgettable, family-friendly entertainment — anytime, anywhere, with anyone.

UPSIDE SPORTS ENTERTAINMENT / info@nandora.net





booth 23 #entertainment

Immersive VR Entertainment Platform



MEET ANIME CHARACTERS IN VR

Gakugeki Inc. collaborates with anime studios and VTuber agencies to create a next-generation VR entertainment platform. Using advanced VR and AI, we let fans meet their favorite characters in immersive virtual worlds—delivering up to 10× higher performance and redefining how global fans connect.

Gakugeki Inc. / info.gakugeki@gmail.com



booth 24 #entertainment

Geo Portal



TOUCHABLE HOLOGRAPHIC CITY

Geo Portal projects a touchable 360° holographic city onto any tabletop, making futuristic urban visualization feel straight out of science fiction.

Portalgraph Inc. / contact@portalgraph.com



booth 25 #entertainment

Avatar Pilot Platform (AVACOM & Ava Training)



AI AVATARS FOR TRAINING & CUSTOMER SUPPORT

AVACOM is an avatar-based solution combining AI and remote operators to optimize customer interactions across stores and websites. Ava Training is an EdTech tool for customer service and sales training with AI-powered avatars.

AVITA, Inc. / contact@avita.co.jp



booth 26 #entertainment

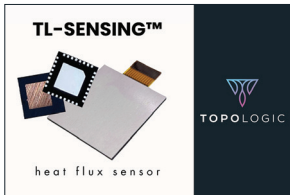
AVATARIUM Portable

CAPTURE. TRANSFORM. AI. AVATAR.

AVATARIUM Portable is a compact AI-powered booth that scans your face and instantly creates an avatar video, offering a fun, safe, and personalized “moving memory” experience.



POCKET RD Inc. / avatarium_portable@pocket-rd.com



booth 27 #deeptech

Heat Flux Sensor TL-SENSING

NEXT-GEN. HEAT. SENSING.

TL-SENSING detects internal body temperature, identifies early faults in batteries and power semiconductors, and enables precise thermal management using innovative, rapid heat-sensing technology based on the unique physics of topological materials.



TopoLogic Inc. / info@topologic.jp



booth 28 #lifestyle

Lexiblocks

TACTILE. PLAYFUL. EDUCATIONAL.

Lexiblocks blends tactile play with digital magic — wooden alphabet blocks made from Japanese Hinoki come alive through AR, turning spelling into an interactive adventure that inspires creativity, learning, and joyful discovery.



ASYM Inc. / info@ASYM.co.jp



booth 29

#lifestyle

Wiillow

AI FOR STUDENT WELL-BEING

Wiillow supports elementary students' well-being through short, voice-guided chats with AI animal friends that build life skills. Counselors and Teachers see progress trends, early-risk alerts, and next-step guidance; parents receive simple home-practice tips.

Wiillow Inc. / ryo@wiillow.com



booth 30

#lifestyle

NZero Energy Management

AI-POWERED ENERGY OPTIMIZATION, UNLOCK COST SAVINGS

NZero's AI-driven platform empowers organizations to reduce energy, costs, and emissions with precision. Beyond compliance, it delivers deep insights and measurable ROI through advanced analytics and intelligent recommendations.

NZero, Inc. / info@nzero.com



booth 31

#lifestyle

Silk x PLA LuxeFrame

SUSTAINABLE LUXURY FROM SILK

The world's first eyewear frame injection-molded with natural silk. Our Silk x PLA composite achieves higher strength, heat resistance, and biodegradability, delivering elegant matte texture, comfort, and sustainable luxury born from advanced Japanese biomaterial engineering.

UNITED SILK Co., Ltd. / info@united-silk.co.jp



J - S t a r t u p

Over 10,000 Japanese startups are tackling new challenges with innovative solutions every day. Most of these companies are limited to Japan, and are not yet active globally. We aim to change that. The J-Startup program, founded by the Ministry of Economy, Trade and Industry (METI), promotes the top Japanese startups with competitive and groundbreaking technologies and solutions. J-Startup brings the next generation of innovation from Japan to the world stage.



J-Startup



J E T R O

The Japan External Trade Organization (JETRO), a Japanese government-related organization, has been assisting innovative startups in expanding their businesses into the global market since 2003. JETRO provides extensive support for business development, including consultation on go-to-market strategies, in order to help small businesses grow and to foster their relationships with their global counterparts.

JETRO

Japan External Trade Organization

