



**JETRO**  
Japan External Trade Organization



JAPAN PAVILION

CES

2025

JAN 07 - 10

# A B O U T   U S



## J-Startup

Over 10,000 Japanese startups are tackling new challenges with innovative solutions every day. Most of these companies are limited to Japan, and not yet active globally. We aim to change that. The J-Startup program, founded by the Ministry of Economy, Trade and Industry (METI), promotes the top Japanese startups with competitive and groundbreaking technologies and solutions. J-Startup brings the next generation of innovation from Japan to the world stage.

# JETRO

Japan External Trade Organization

The Japan External Trade Organization (JETRO), a Japanese government-related organization, has been assisting innovative startups in expanding their businesses into the global market since 2003. JETRO provides extensive support for business development, including consultation on go-to-market strategies, in order to help small businesses grow and to foster their relationships with their global counterparts.



J-STARTUP



JETRO USA



JETRO STARTUP

# STAGE SCHEDULE

## 07 TUE

11  
AM

ART PERFORMANCE by MITSUME  
JAPANESE STARTUP INTRO 1  
COFFEE GIVEAWAY

#robotics

2  
PM

ART PERFORMANCE by MITSUME  
GLOBAL PITCH BATTLE 1  
COFFEE GIVEAWAY

#health tech

---

## 08 WED

11  
AM

ART PERFORMANCE by MITSUME  
JAPANESE STARTUP INTRO 2  
COFFEE GIVEAWAY

#AI

2  
PM

ART PERFORMANCE by MITSUME  
JAPANESE STARTUP INTRO 3  
COFFEE GIVEAWAY

#health tech

---

## 09 THU

11  
AM

ART PERFORMANCE by MITSUME  
JAPANESE STARTUP INTRO 4  
COFFEE GIVEAWAY

#immersive  
#sustainability

2  
PM

ART PERFORMANCE by MITSUME  
GLOBAL PITCH BATTLE II  
COFFEE GIVEAWAY

#robotics

# EVENT DETAILS

## PITCH SESSIONS

### JAPANESE STARTUP INTRO

Experience Japanese innovation as dynamic startups showcase their cutting-edge projects.

11AM TUE, WED, THU  
2PM WED

### GLOBAL PITCH BATTLE

We have invited speakers from international pavilions to pitch their innovative ideas from a global perspective.

2PM TUE & THU

## GIVEAWAY

### FREE COFFEE & GOODIES!

COFFEE: The audiences who attend our stage events will receive a free coffee!

11AM & 2PM TUE, WED, THU  
AFTER PITCH EVENTS  
WHILE SUPPLIES LAST

GOODIES: Receive exclusive tumblers and sunglasses! Ask the staff for details.

TUE, WED, THU  
WHILE SUPPLIES LAST



## ART

### ART PERFORMANCES by MITSUME “Beyond the Palette”

MITSUME, a Japanese artist, creates unforgettable works that captivate audiences worldwide. Experience the vivid, fantastical art up close—you won’t forget it!

TUE, WED, THU

STAGE 11AM & 2PM  
WALL C 12PM & 3PM



### MITSUME

Unique and Colorful.  
Impossible to Forget.

MITSUME, a designer and artist, is known for his unforgettable, colorful works. From planning to designing apparel and merchandise, he handles the entire creative process himself. His live performances, ranging from painting with acrylics to digital art on a laptop, are tailored to each venue. Active worldwide, he performs in Japan, the U.S., Europe, and Asia.



# M A P

★ Best of Innovation ☆ Honoree

31 30 29

#health tech

28 27 26

#immersive

25 24 23 22

#robotics

☆

#robotics

21

☆

20

☆

19

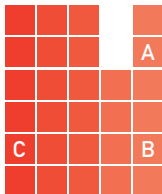
18

#health tech

14 15 16 17

☆

★



A. JETRO & INFO  
MOONSHOT CAFE  
B. STAGE  
C. ART PERFORMANCE

#sustainability

13 12 11

#ai

10 9 8

#ai

7 6 5

#ai

4 3 2 1

☆

☆

☆ 01. Monoxer, Inc.

☆ 02. RevComm Inc.

03. unerry Inc.

04. Uzabase USA, Inc.

05. Gigalogy Inc.

06. CADDi Co., Ltd.

07. MEMORY LAB, Inc.

08. Chizaizukan Inc.

09. Penetrator Inc.

10. Tensor Energy Inc.

11. ASUENE USA Inc.

12. UNITED SILK Co.,Ltd.

13. Water Design Japan

☆ 14. Qolo Inc.

15. Elcyo Co., Ltd.

16. Magic Shields Inc.

☆ 17. BionicM Inc.

18. Tokoshie Inc.

19. Jizai, Inc.

☆ 20. ROMS, Inc.

☆ 21. FingerVision Inc.

☆ 22. Kailas Robotics, Inc.

23. Thinker Inc.

24. obniz Inc.

25. CalTa Inc.

26. Auto VR inc.

27. palan, Inc.

28. SceneryScent Co.,Ltd.

29. yocto Co.,Ltd

30. l'mbesideyou Inc.

31. The Way Design LLC

01



## Monoxer Junior Adaptive Learning



Monoxer's adaptive quizzes make learning engaging and memorable. With user-generated content, Monoxer can be used in various settings, from schools to corporate training.

Monoxer, Inc.  
Tokyo, JAPAN  
[info@monoxer.com](mailto:info@monoxer.com)



# 02



## RevComm Self-Coaching with AI Analytics



RevComm's AI-powered analytics provide real-time insights into your team's calls, video meetings, and offline meetings. This enables you to make data driven decisions to increase sales and improve customer satisfaction scores. We were listed in Forbes' "The AI 50 2023."

RevComm Inc.  
Tokyo, Japan  
[roy.kimura@revcomm.com](mailto:roy.kimura@revcomm.com)



03



## AI Prediction for New Store Opening Business Scale Prediction Using Location Data

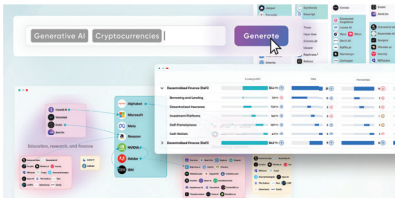
AI Prediction for New Store Opening determines revenue level and foot traffic volume for a specific location utilizing location data. The prediction provides an objective data point to understand the scale of business to expect when opening a new store in any location across North America.

unerry Inc.  
Tokyo, Japan  
[global@unerry.co.jp](mailto:global@unerry.co.jp)





04



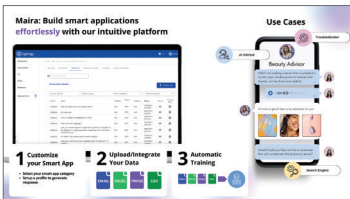
# AI Innovation Analyst

## Empowering Strategic Decisions with AI

The AI Innovation Analyst is a new product offering for the Speeda Edge Market Intelligence platform that revolutionizes how companies monitor, understand, and research emerging technologies and their landscapes. Make quick, confident decisions by instantly generating customized reports, finding the right intelligence, and creating strategy with AI-generated recommendations.

Uzabase USA, Inc.  
New York, NY, USA  
[info@sp-edge.com](mailto:info@sp-edge.com)





# Maira

## AI Powered Smart App Builder

Maira is a no-code platform that enables users to create AI-driven smart applications effortlessly. With intuitive tools and generative AI integration, it supports diverse data formats, automates preprocessing, and seamlessly connects with APIs, websites, and apps, facilitating the development of dynamic, scalable solutions for various business needs.

Gigalogy Inc.  
Tokyo, Japan  
info@gigalogy.com



06



# CADDi Drawer

## AI Data Platform for Manufacturing

CADDi Drawer is an AI-driven drawing management technology designed specifically for the manufacturing industry. It helps streamline how manufacturers manage and utilize their drawings, fostering a more efficient, cost-effective, and collaborative environment. Key features include document management, drawing digitalization, custom templates, and more.

CADDi Co., Ltd.  
Chicago, IL, USA  
[drawer.info@caddi.com](mailto:drawer.info@caddi.com)





## Memory AI

### Accelerating New Business and R&D

In companies where responding to societal needs through technological innovation is required, this service is used for exploring the applicability of in-house technologies and new business areas for R&D division. By utilizing natural language processing, the service can quickly visualize the relevance of research and technological fields related to the user's areas of interest.

MEMORY LAB, Inc.  
Tokyo, Japan  
info@memorylab.jp



08



**ideaflow**

**ideaflow**

**Transforming Patents into Business Ideas**

"Ideaflow" is an AI service that generates business ideas using public patents, creating image-based proposals for inspiration. It enables idea-sharing, team feedback, and AI collaboration, helping users refine ideas and connect with implementation partners.

Chizaizukan Inc.  
Tokyo, Japan  
[contact@chizaizukan.com](mailto:contact@chizaizukan.com)



# 09



## WHERE

### Next Generation Off-Market Real Estate

“WHERE” is the first SaaS platform to automate global off-market real estate transactions using AI and satellite data. It streamlines the acquisition process, offering direct access to untapped properties worldwide, enabling businesses to secure opportunities faster, reduce costs, and enhance growth through transparent, data-driven decisions.

Penetrator Inc.  
Tokyo, Japan  
[info@pntwhere.com](mailto:info@pntwhere.com)



# 10



# Tensor Energy

## Tensor Cloud

### Democratize Energy for All

Tensor Cloud is an AI-powered platform transforming renewable energy management. We optimize solar PV and battery storage operations, empowering companies to make sustainable energy accessible for all. Our solution streamlines processes to maximize efficiency and profitability for renewable energy asset owners, driving a future where clean energy is equally distributed.

Tensor Energy Inc.  
Fukuoka, Japan  
[hello@tensorenergy.jp](mailto:hello@tensorenergy.jp)





# ASUENE

## Your All-In-One Decarbonization Partner

Asuene is a leading provider of comprehensive sustainability solutions with over 10,000 clients worldwide. Our all-in-one solution, including Carbon Accounting Software and Consulting, ESG supply chain management, Carbon Credit exchange platform, and Third-Party verification can be a powerful partner in a company's ESG disclosure and reduction process.

ASUENE USA Inc.  
Los Angeles, CA, USA,  
seiichiro.tanigaki @ asuene.com







## **Silk Fibroin Bio-Material**

### **Bio Plastics Made from Silk**

The world's first resin made from silk fibroin is molded under heat and pressure to replace traditional plastics. Fibroin - extracted from the cocoons made by insect pupae - is known for its high affinity with the human body. This project paves the way for environmentally friendly and health-conscious alternative materials.

UNITED SILK Co., Ltd.  
Tokyo, Japan  
[info@united-silk.co.jp](mailto:info@united-silk.co.jp)



# 13



## NanoWasala

### Invisible Bubbles, Visible Change

Nanowasala revolutionizes cleaning with patented nanobubble technology. It offers deep cleaning without chemicals, making it eco-friendly and efficient. Available as a showerhead attachment and pipeline nozzle, it fits seamlessly into homes and industries. Easy to install and low-maintenance, it ensures consistent water pressure while reducing water usage and promoting sustainability.

Water Design Japan  
Tokyo, Japan  
team@waterdesign.tokyo





## Qolo Rehabilitation

### Rise to Your Feet Again



Qolo enables advanced standing training with a system for repetitive stand-up exercises and real-time data monitoring. It reduces therapists' physical burden while increasing training efficiency with its unique technology. Compact and portable, it offers flexible uses across clinical environments, enhancing accessibility and optimizing rehabilitation training processes.

Qolo Inc.  
Ibaraki, Japan  
[ces25@qolo.jp](mailto:ces25@qolo.jp)



# 15



## Elcyo Glasses

### Adaptable Visionwear

Experience next-gen eyewear with autofocus glasses. Designed for presbyopia and eye strain, these adaptive lenses provide clear vision at any distance, reducing eye stress. Enjoy smoother transitions and enhanced daily comfort with lenses that prioritize eye wellness.

Elevate your vision and eye care today!

Elcyo Co., Ltd.  
Kyoto, Japan  
[contact@elcyo.co.jp](mailto:contact@elcyo.co.jp)





## Magic Shields Smart Floor

### Smart Flooring to Prevent Fractures

Magic Shields Floor is a floor designed to prevent elderly people from falling and breaking bones. This floor detects when elderly people are walking. It is usually hard and easy to walk on, but when an elderly person falls, it becomes soft, reducing the risk of fractures.

Magic Shields Inc.  
Shizuoka, Japan  
[hiroshi.shimomura@magicshields.co.jp](mailto:hiroshi.shimomura@magicshields.co.jp)





## Bio Leg®

### Stride with Bionic Limbs

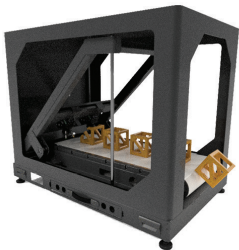


Integrating an electrical motor with multiple sensors, Bio Leg® provides powered assistance to reduce discomfort and improve smoothness of movement. The design prioritizes a natural, human-like appearance, featuring a calf muscle bulge and black carbon material for self-expression, earning the Red Dot Luminary Award.

BionicM Inc.  
Tokyo, Japan  
[marketing\\_usa@bionicm.com](mailto:marketing_usa@bionicm.com)



# 18



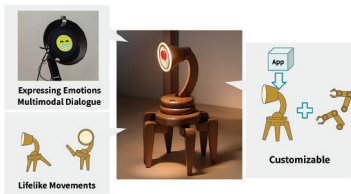
## LeeeX

### 3D Printer Integrated Factory

LeeeX introduces a new era in 3D printing by integrating a fully automated, continuous production process through patent-pending metal conveyor belt and 5 axis technology. This system enables the seamless production of complex, customized items without the need for manual intervention, drastically reducing production time and costs.

Tokoshie Inc.  
Tokyo, Japan  
[birtht.3dprinter@gmail.com](mailto:birtht.3dprinter@gmail.com)





## Mi-Mo

### AI Robot that Thinks, Acts & Adapts

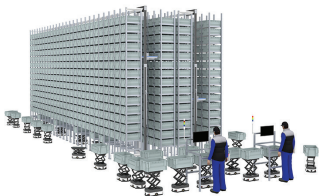
"Mi-Mo" is the world's first general-purpose AI robot that autonomously thinks and acts based on visual, audio, and movement inputs. It manages household tasks from accompanying children's play to task management. Users can integrate new functions through simple software programming and access community-created features on the platform.

Jizai, Inc.  
Tokyo, Japan  
[info@jizai.ai](mailto:info@jizai.ai)





# 20



## Nano-Stream

### Smart Warehouse Automation



Nano-Stream is the industry's most efficient automated storage and retrieval system that dramatically improves labor and storage efficiency in warehouses with minimum cost and complexity. The flexible and compact design allows you to start as small as 1,000 square feet and expand later while achieving high throughput and storage density.

ROMS, Inc.  
Tokyo, Japan  
[info@roms.inc](mailto:info@roms.inc)



# 21



## FingerVision R1

### Vision Based Tactile Robotic Hands



Robot hands featuring tactile sensors based on image processing. It can gauge a variety of information, including not only force, but also slip, posture, and size. By feeding this information back to the hand in real-time, it enables handling that was not possible before.

FingerVision Inc.  
Tokyo, Japan  
[Contact@fingervision.jp](mailto:Contact@fingervision.jp)





## MobiRobo

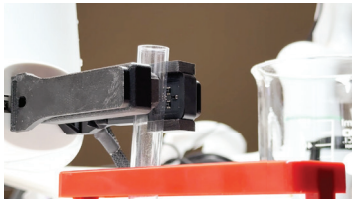
### Vision Assisted Robotic Arm



By simply looking at an object, the arm captures it and provides haptic feedback. This technology can be applied in various scenarios, such as assisting with precision tasks like soldering in electronics assembly, or as a prosthetic aid that allows users to intuitively interact with objects.

Kailas Robotics, Inc.  
Saitama, Japan  
[public-relation@kailasrobotics.com](mailto:public-relation@kailasrobotics.com)





## Pre-Touch Sensor TK-01G

### Touch Sensitive Robotics

TK-01 uses unique infrared-sensing technology to detect the position and shape of an object without contact. A simple teaching system enables the robot to grasp objects that were previously difficult to handle.

Thinker Inc.  
Osaka, Japan,  
[info-web@thinker-robotics.co.jp](mailto:info-web@thinker-robotics.co.jp)



# 24



## Add 'Smart' to Products

Improve Maintenance and Customer Service with Connectivity.

- Simply Attach for 24/365 Monitoring
- Adding Realtime Communication
- IoT Specialized OS Works on Edge

## obniz Now

### Add 'Smart' to Products

obniz Now is the world's first IoT solution with patented Remote Desktop-like technology, enabling seamless communication with any machinery, regardless of age, without software development on IoT Devices. This groundbreaking innovation allows low-cost, real-time remote monitoring and error detection, transforming machine maintenance across industries.

obniz Inc.  
Tokyo, Japan  
yukisato@obniz.com



# 25



## TRANCITY

### Foresee the Unseen, with Digital

TRANCITY is a digital twin platform that generates precise 3D models and point cloud data by recording video with your camera, capturing accurate positions and times. This simplifies inspection and management, providing an intuitive, immersive experience that blends qualitative insights with quantitative precision, extending digital twin applications across diverse fields.

CalTa Inc.  
Tokyo, Japan  
[information@calta.co.jp](mailto:information@calta.co.jp)



# 26



## AutoVR VR Car Showroom

Transform auto sales with immersive VR: showcase realistic cars, customize colors, parts, and interiors, and compare two models side-by-side.

Our tool shortens negotiation time, boosts conversion rates, and lowers dealership operating costs, making sales conversations efficient and engaging.

Auto VR inc.  
Hokkaido, Japan  
[sales@autovr.co.jp](mailto:sales@autovr.co.jp)





## Spatial Guides

### AR Based AI NPC Guides

Spatial Guides is the world's first platform that enables businesses to deploy AI guide agents using AR for tourism.

It solves labor shortage issues in the tourism industry by providing an alternative to labor-intensive tourist guides, while still keeping a personalized experience for tourists.

palan, Inc.  
Tokyo, Japan  
[info@palan.co.jp](mailto:info@palan.co.jp)





# 28



## DIVE MONSTER

### Scent for Immersion

In large venues such as halls and theaters, fragrances can be distributed efficiently and effectively to the back rows of the audience. Additionally, when the audience transitions to a scene where fragrance is not required, it can be promptly and seamlessly eliminated. Our technology enables the precise control of scents over time, allowing for seamless switching between up to four different scents.

SceneryScent Co., Ltd.  
Osaka, Japan  
[infodesk@sceneryscent.com](mailto:infodesk@sceneryscent.com)



# 29



## yoctoMat: The IoT-enabled yoga mat Smart Yoga Tech

yoctoMat is a revolutionary IoT yoga mat that monitors posture and balance in real-time. Paired with yoctoApp, it provides feedback for a safer, more personalized yoga experience. Ideal for fitness enthusiasts, studios, and wellness centers looking to enhance training and health outcomes.

yocto Co.,Ltd  
Fukuoka, Japan  
info@yocto-life.co.jp



# 30

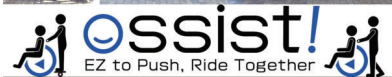


## **TheraWin** **Mental Healthcare AI for Immigrants**

The best mental healthcare for immigrants, utilizing a hybrid of AI and real human therapists. Talk with our AI therapists 24/365. Our AI detects 86% of mental health disorders and will directly connect you with the best therapist who can completely understand your cultural background.

l'mbesideyou Inc.  
Palo Alto, CA, USA  
info@imbesideyou.world





## ossist!

### Push Assist for Wheelchairs

ossist! comes from “osu” and “assist”. “Osu” means “to push” in Japanese. ossist! can be attached to standard manual wheelchairs and removes the burden from caregivers when pushing sitters outside. The pushers can move together with the sitters by standing on the roller-board. An app detects upcoming bumps on sidewalks.

The Way Design LLC  
Aichi, Japan  
ume2@theway.design



# JETRO

Japan External Trade Organization



FOLLOW US ON SOCIAL MEDIA!