

# PARAMOUNT BED CO., LTD.



- ❑ Address: Koto-ku, Tokyo
- ❑ Employees: 914
- ❑ Established in 1950
- ❑ Business: Manufacture and sale of medical/nursing care beds and furniture and fixtures, etc.

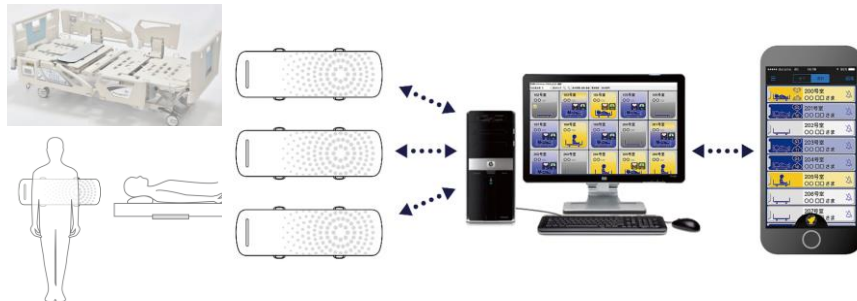
<https://www.paramount.co.jp/english/>

## Outline of the demonstration project

- The project for the development of a more accurate monitoring service business for telemedicine and other situations using sensing devices in Indonesia

## Cooperation with local companies/governments

- Local partner: PT. Metro Healthcare Indonesia. Tbk
- Details of cooperation and collaboration: Evaluation of equipment systems in clinical practice, collaborative study and planning for utilization in remote diagnosis.



## Targeted economic/social issues

- Indonesia faces the challenge of improving the quality of health care services.
- In addition, the aging rate is expected to exceed 14% in 2038.
- There is an urgent need to respond to the aging society, and the government has set up the measures to overcome lifestyle-related diseases and aging.

## Details of demonstration

- Introduced sensing device that has a proven track record of adoption in the medical and nursing care fields in Japan.
- The strength of the device is that the sensor placed on the bed can acquire data such as the sleeping state, heart rate, and respiration rate with accuracy, while elderly patients lying down in a non-contact manner.
- Established a platform to verify whether appropriate data can be obtained at local medical facilities for grasping the condition of patients. The aim is to realize more efficient remote diagnosis and watching and care services for the aged.

## Expected outcome of beneficiary effects

- Expectations are high for the formation of a new market linked to sensing devices in the field of remote diagnosis and monitoring.
- It may also contribute to solving the shortage of medical institutions, preventing lifestyle-related diseases, and reducing nursing care costs.